

Company Ernst Oil  
Well Witt #4

Field Unamed  
County Rooks  
State Kansas

Location: 2310' PNL & 1755' PNL  
AP # : 15 163 24063  
Other Services: DIL/BOS CDNL

SEC 3 TWP 6S RGE 20W  
Permanent Datum Ground Level Elevation 2163'  
Log Measured From KB 5' AGL  
Drilling Measured From KB  
Elevation: K.B. 2168', D.L. 2167', G.L. 2163'

Date 8-27-12  
Depth Driller 3675

Curve Definitions  
SW Water Saturation  
Rwa Apparent Water Resistivity  
VSH Shale Volume  
PHIE Effective Porosity  
K Permeability  
Bulk Volume Water  
Pay If: PHIE>5%, VSH<50%, SW<50%, DCAL<10"  
Recorded By L Smith  
Witnessed By Mr. Robert Hopkins Mr. Fred Ernst

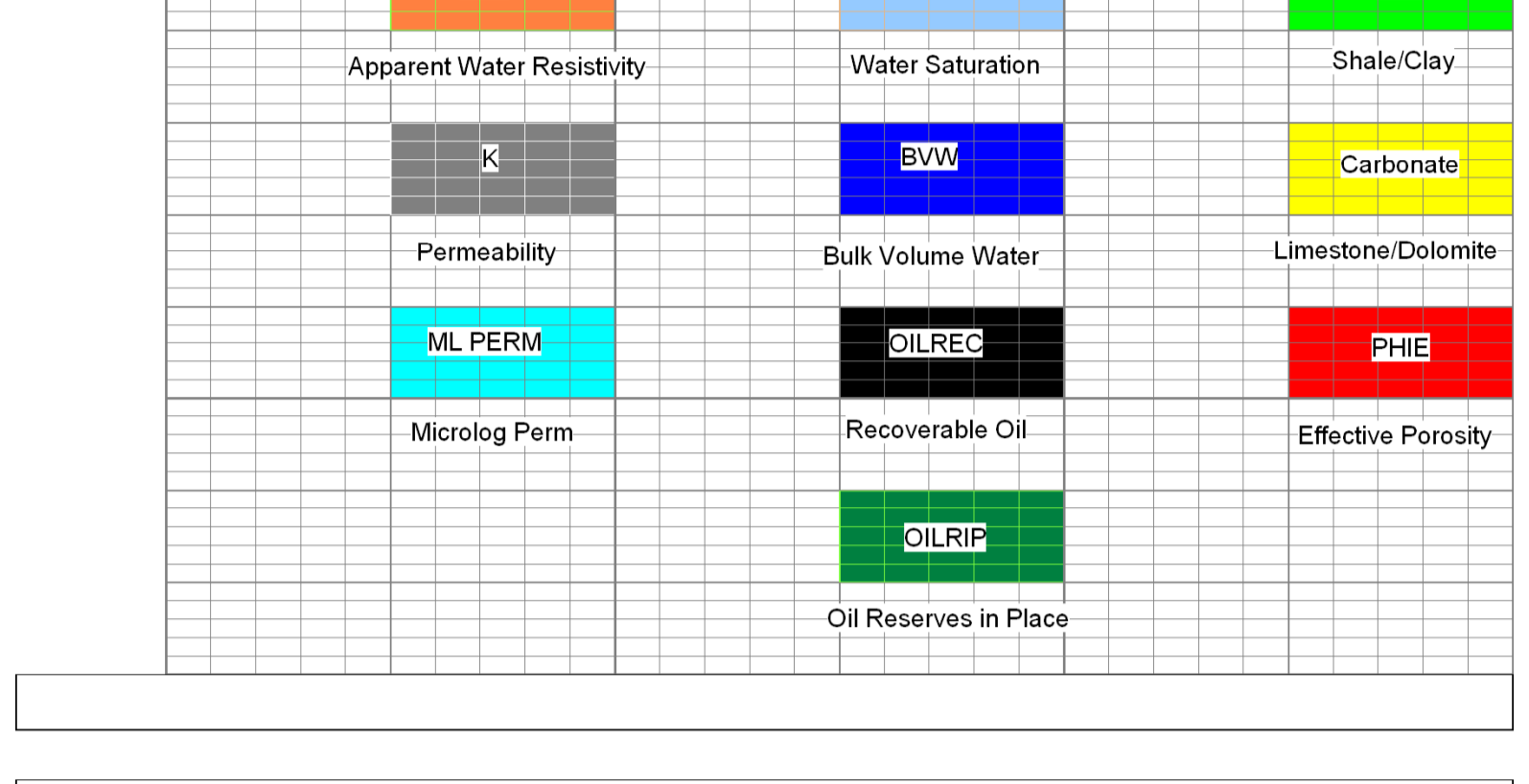
<<< Fold Here >>>

All interpretations are opinions based on inferences from electrical or other measurements and we cannot and do not guarantee the accuracy or correctness of any interpretation, and we shall not, except in the case of gross or willful negligence on our part, be liable or responsible for any loss, costs, damages, or expenses incurred or sustained by anyone resulting from any interpretation made by any of our officers, agents or employees. These interpretations are also subject to our general terms and conditions set out in our current Price Schedule.

Comments  
  
Thank you for using The Perforators LLC  
Hays, KS (785) 621-4604

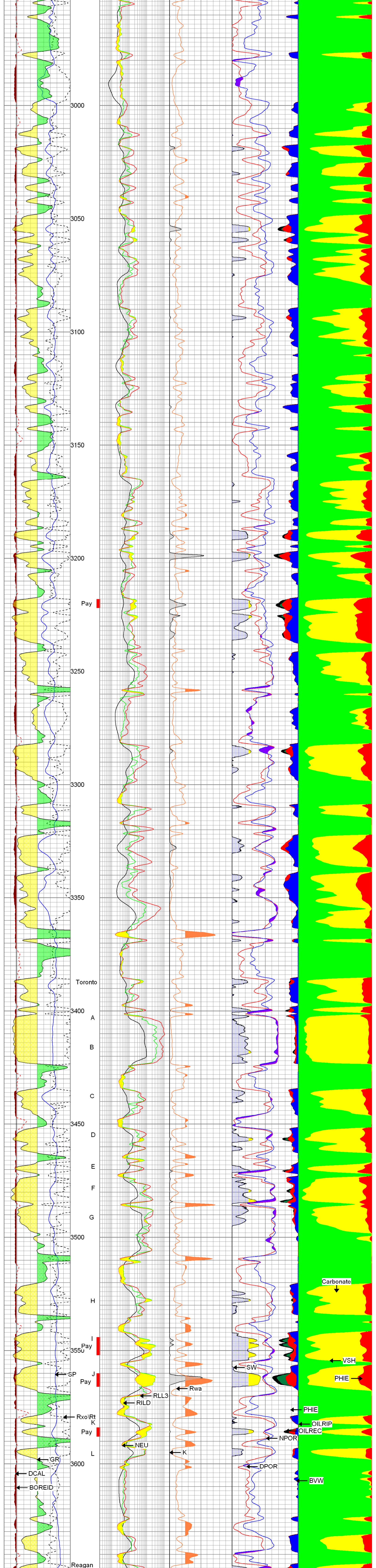
**The Perforators** Main Pass

Database File: gcolorchart.db  
Dataset Pathname: pass3.1  
Presentation Format: color  
Dataset Creation: Wed Nov 17 10:09:46 2010  
Charted by: Depth in Feet scaled 1:240



Database File: eowitt#4oh.db  
Dataset Pathname: oh2  
Presentation Format: kohcgi  
Dataset Creation: Tue Aug 28 19:48:55 2012  
Charted by: Depth in Feet scaled 1:240

0 GR (GAPI) 150	RILD	0 Rwa (Ohm-m) 1	100 SW (%) -100	0 VSH (%) 100
-100 SP (mV) 100	0.2 (Ohm-m) 2000	0 K	50 PHIE (%) 0	50 PHIE (%) 0
6 DCAL (in) 16	RLL3		50 BVW (%) 0	
6 BOREID (in) 16	0.2 (Ohm-m) 2000		30 NPOR (pu) -10	
140 Rxo/Rt -60	0 NEU (NAPI) 700		30 DPOR (pu) -10	
			200COILREC (bbl) 0	
			8000OILRIP (bbl) 0	



0 GR (GAPI) 150	RILD	0 Rwa (Ohm-m) 1	100 SW (%) -100	0 VSH (%) 100
-100 SP (mV) 100	0.2 (Ohm-m) 2000	0 K	50 PHIE (%) 0	50 PHIE (%) 0
6 DCAL (in) 16	RLL3		50 BVW (%) 0	
6 BOREID (in) 16	0.2 (Ohm-m) 2000		30 NPOR (pu) -10	
140 Rxo/Rt -60	0 NEU (NAPI) 700		30 DPOR (pu) -10	
			200COILREC (bbl) 0	
			8000OILRIP (bbl) 0	