

|                        |                   |                              |                     |            |            |
|------------------------|-------------------|------------------------------|---------------------|------------|------------|
| Company                | Ernst Oil         | Location:                    | 2310 FNL & 1755 FNL | State      | Kansas     |
| Well                   | Witt #4           | AP#:                         | 15 163 24063        |            |            |
| Field                  | Unnamed           | County                       | Rooks               |            |            |
| County                 | Rooks             | SEC                          | 3                   | TWP        | 6S         |
| State                  | Kansas            | RGE                          | 20W                 | Elevation  | 2163       |
| Location:              | Permanent Datum   | Ground Level                 | KB 5' AGL           | Elevation  | 2163       |
|                        | Log Measured From | Drilling Measured From       | KB                  | K.E. 2168' | D.L. 2162' |
|                        |                   |                              |                     | G.L. 2163' |            |
| Date                   | 8-27-12           | Run Number                   | One                 |            |            |
| Depth Logger           | 3675              | Bottom Logged Interval       | 3674                |            |            |
| Top Log Interval       | 3657              | Casing Driller               | 252                 |            |            |
| Bottom Logged Interval | 3674              | Casing Logger                | 252                 |            |            |
| Run Number             | One               | Bit Size                     | 7.75"               |            |            |
| Depth Logger           | 3675              | Type Fluid in Hole           | Chemical Mud        |            |            |
| Bottom Logged Interval | 3674              | Density / Viscosity          | 9.2/61              |            |            |
| Run Number             | One               | pH / Fluid Loss              | 10.5/8.8            |            |            |
| Depth Logger           | 3675              | Source of Sample             | 2.5 @ 446ft         |            |            |
| Bottom Logged Interval | 3674              | Rm @ Meas. Temp              | 1.86 @ 446ft        |            |            |
| Run Number             | One               | Rm @ Meas. Temp              | 3.6 @ 446ft         |            |            |
| Depth Logger           | 3675              | Rm @ Meas. Temp              | 1.67 @ 1106ft       |            |            |
| Bottom Logged Interval | 3674              | Time Cutoff on Station       | 9:00 a.m.           |            |            |
| Run Number             | One               | Time Cutoff on Station       | 11:30 a.m.          |            |            |
| Depth Logger           | 3675              | Maximum Recorded Temperature | 111 DegF            |            |            |
| Bottom Logged Interval | 3674              | Equipment Number             | 11042               |            |            |
| Run Number             | One               | Location By                  | Hays NS             |            |            |
| Depth Logger           | 3675              | Recorded By                  | Mt. Robert Hopkins  |            |            |
| Bottom Logged Interval | 3674              | Revised By                   | Mt. Fred Ernst      |            |            |

All interpretations are opinions based on inferences from electrical or other measurements and we cannot and do not guarantee the accuracy or correctness of any interpretation, and we shall not, except in the case of gross or willful negligence on our part, be liable or responsible for any loss, costs, damages, or expenses incurred or sustained by anyone resulting from any interpretation made by any of our officers, agents or employees. These interpretations are also subject to our general terms and conditions set out in our current Price Schedule.

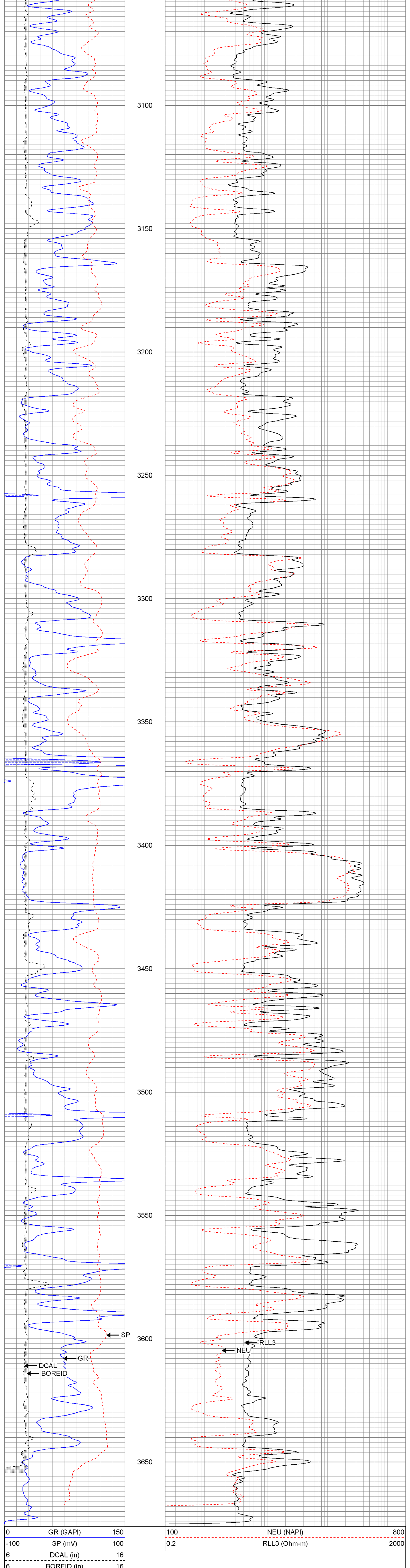
Comments

<<< Fold Here >>>

**The Perforators** Main Pass

Database File: eowitt#4oh.db  
 Dataset Pathname: pass2  
 Presentation Format: krg  
 Dataset Creation: Mon Aug 27 11:56:26 2012 by Log Open-Cased 100827  
 Charted by: Depth in Feet scaled 1:240

|      |             |     |     |              |      |
|------|-------------|-----|-----|--------------|------|
| 0    | GR (GAPI)   | 150 | 100 | NEU (NAPI)   | 800  |
| -100 | SP (mV)     | 100 | 0.2 | RLL3 (Ohm-m) | 2000 |
| 6    | DCAL (in)   | 16  |     |              |      |
| 6    | BOREID (in) | 16  |     |              |      |

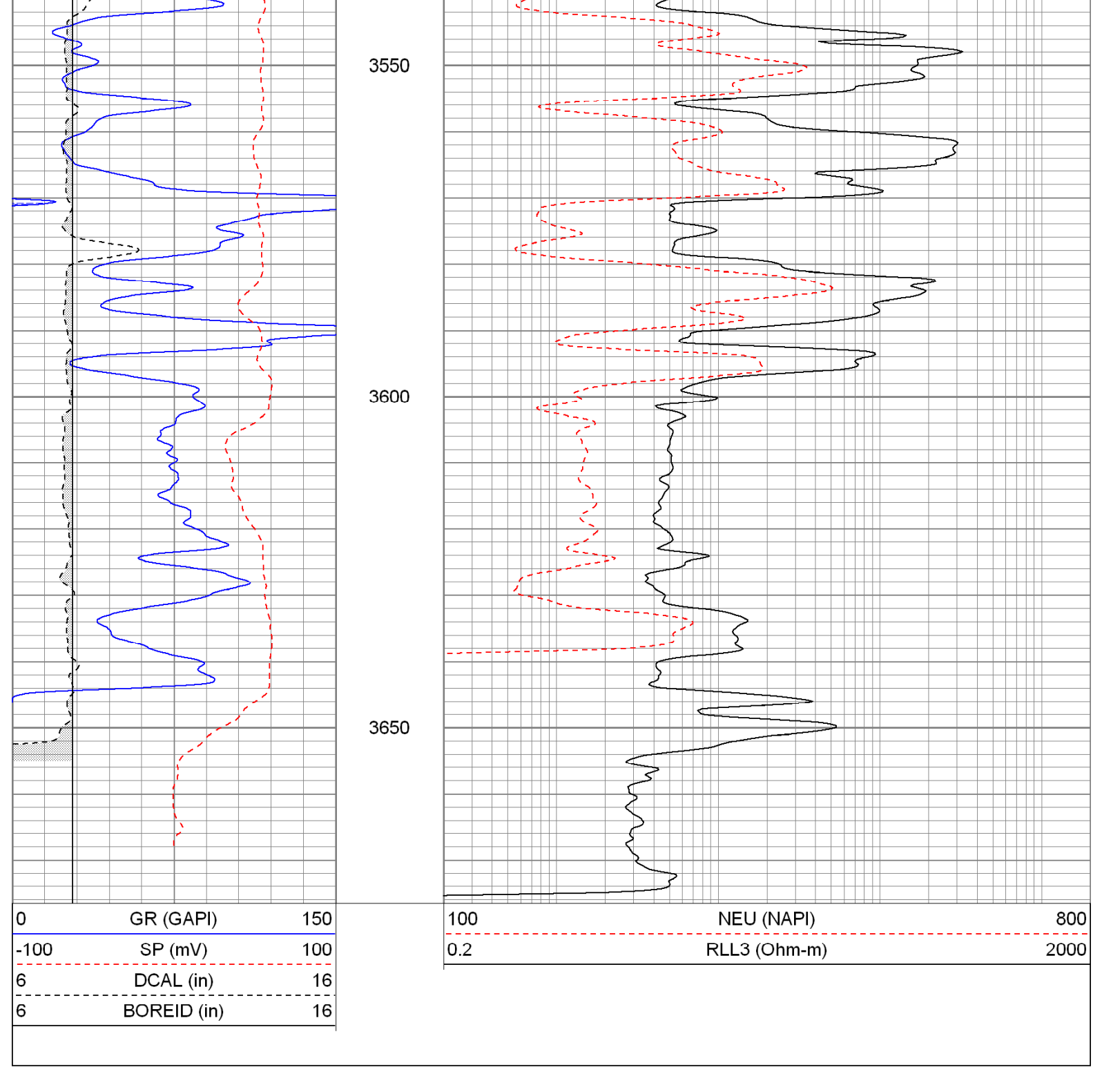


|      |             |     |     |              |      |
|------|-------------|-----|-----|--------------|------|
| 0    | GR (GAPI)   | 150 | 100 | NEU (NAPI)   | 800  |
| -100 | SP (mV)     | 100 | 0.2 | RLL3 (Ohm-m) | 2000 |
| 6    | DCAL (in)   | 16  |     |              |      |
| 6    | BOREID (in) | 16  |     |              |      |

**The Perforators** Repeat Pass

Database File: eowitt#4oh.db  
 Dataset Pathname: pass1  
 Presentation Format: krg  
 Dataset Creation: Mon Aug 27 11:47:53 2012 by Log Open-Cased 100827  
 Charted by: Depth in Feet scaled 1:240

|      |             |     |     |              |      |
|------|-------------|-----|-----|--------------|------|
| 0    | GR (GAPI)   | 150 | 100 | NEU (NAPI)   | 800  |
| -100 | SP (mV)     | 100 | 0.2 | RLL3 (Ohm-m) | 2000 |
| 6    | DCAL (in)   | 16  |     |              |      |
| 6    | BOREID (in) | 16  |     |              |      |



|      |             |     |     |              |      |
|------|-------------|-----|-----|--------------|------|
| 0    | GR (GAPI)   | 150 | 100 | NEU (NAPI)   | 800  |
| -100 | SP (mV)     | 100 | 0.2 | RLL3 (Ohm-m) | 2000 |
| 6    | DCAL (in)   | 16  |     |              |      |
| 6    | BOREID (in) | 16  |     |              |      |

**Calibration Report**

Database File: eowitt#4oh.db  
 Dataset Pathname: pass1  
 Dataset Creation: Mon Aug 27 11:47:53 2012 by Log Open-Cased 100827

**Dual Induction Calibration Report**

Serial-Model: 5375-G  
 Surface Cal Performed: Sun Aug 12 17:49:58 2012  
 Downhole Cal Performed: Sun Aug 12 17:50:24 2012

| Surface Calibration |        | Readings |       | References |         | Results |        |
|---------------------|--------|----------|-------|------------|---------|---------|--------|
| Loop:               |        | Air      | Loop  | Air        | Loop    | m       | b      |
| Deep                | Medium | 0.003    | 0.640 | 0.000      | 350.000 | 549.198 | -1.535 |
|                     |        | 0.006    | 0.743 | 0.000      | 400.000 | 542.723 | -3.445 |
| Internal:           |        | Zero     | Cal   | Zero       | Cal     | m       | b      |
| Deep                | Medium | 0.003    | 0.640 | 0.000      | 350.000 | 549.083 | -1.498 |
|                     |        | 0.006    | 0.743 | 0.000      | 550.000 | 746.677 | -4.721 |

| Downhole Calibration |        | Readings |         | References |         | Results |        |
|----------------------|--------|----------|---------|------------|---------|---------|--------|
| Internal:            |        | Zero     | Cal     | Zero       | Cal     | m       | b      |
| Deep                 | Medium | -0.476   | 350.684 | -0.037     | 350.037 | 0.997   | 0.438  |
|                      |        | -0.470   | 400.235 | -0.013     | 399.755 | 0.998   | 0.456  |
| Shallow              |        | 2.469    | 0.010   | 500.000    | 2.000   | 202.563 | -0.086 |

**Compensated Density Calibration Report**

Serial-Model: 2501DHT-DHT  
 Source / Verifier: /  
 Master Calibration Performed: Thu Jul 12 16:14:45 2012

| Master Calibration  |       | Density |  | Far Detector                |  | Near Detector |     |
|---------------------|-------|---------|--|-----------------------------|--|---------------|-----|
|                     |       |         |  |                             |  |               |     |
| Magnesium           | 1.750 | g/cc    |  | 712.68                      |  | 268.30        | cps |
| Aluminum            | 2.680 | g/cc    |  | 135.13                      |  | 184.00        | cps |
| Spine Angle = 77.22 |       |         |  | Density/Spine Ratio = 0.545 |  |               |     |
| Size                |       |         |  | Reading                     |  |               |     |
| Small Ring          | 7.65  | in      |  | 6273.19                     |  |               |     |
| Large Ring          | 14.00 | in      |  | 10676.90                    |  |               |     |

**Gamma Ray Calibration Report**

Serial Number: 2001  
 Tool Model: OH  
 Performed: Sat Jun 30 01:22:23 2012

|                     |        |          |
|---------------------|--------|----------|
| Calibrator Value:   | 1.0    | GAPI     |
| Background Reading: | 0.0    | cps      |
| Calibrator Reading: | 1.0    | cps      |
| Sensitivity:        | 0.2300 | GAPI/cps |

**Neutron Calibration Report**

Serial Number: 5108  
 Tool Model: PROBE  
 Performed: Wed Jun 27 12:59:57 2012

|                     |   |          |
|---------------------|---|----------|
| Calibrator Value:   | 1 | NAPI     |
| Calibrator Reading: | 1 | cps      |
| Sensitivity:        | 1 | NAPI/cps |

| Sensor   | Offset (ft) | Schematic | Description                | Len (ft) | OD (in) | Wt (lb) |
|----------|-------------|-----------|----------------------------|----------|---------|---------|
| NEU      | 37.85       |           | None                       | 0.75     | 1.50    | 5.00    |
|          |             |           | NEU-PROBE (5108)           | 4.92     | 3.63    | 85.00   |
|          |             |           | Probe                      |          |         |         |
| GR       | 32.32       |           | GR-OH (2001)               | 3.56     | 3.25    | 40.00   |
|          |             |           | 2001                       |          |         |         |
|          |             |           | CDL-DHT (2501DHT)          | 9.69     | 4.00    | 201.00  |
| LSD      | 23.78       |           | Digital High Temp CDL Tool |          |         |         |
| DCAL     | 23.49       |           |                            |          |         |         |
| SSD      | 23.24       |           |                            |          |         |         |
| HEADVOLT | 21.47       |           |                            |          |         |         |
| CILD     | 10.60       |           | DIL-G (5375)               | 21.47    | 4.00    | 345.00  |
| SP       | 10.60       |           | Gearhart                   |          |         |         |
| CILM     | 6.89        |           |                            |          |         |         |
| RLL3     | 1.70        |           |                            |          |         |         |

Dataset: eowitt#4oh.db; field/well/run1/pass1  
 Total Length: 40.39 ft  
 Total Weight: 676.00 lb  
 O.D.: 4.00 in