

Company	Ernst Oil	Well	Witt #4	Field	Unnamed	County	Rooks	State	Kansas
Location:	2310 FNL & 1755 FNL		API#:	15 16324053		Other Services			
SEC	3	TWP	6S	RGE	20W	Elevation	2163	DIL	BCS
Permanent Datum	Ground Level		KB 5 A&L	Elevation		2163	R.G.	2162	D.T.
Log Measured From	KB 5 A&L		Elevation		2163	G.L.	2163		
Drilling Measured From	KB		Elevation		2163				
Date	8-27-12								
Run Number	3675								
Depth	3675								
Bottom Logged Interval	3653								
Top Log Interval	3657								
Casing Collar	252								
Case Log	7.0								
Case Log Logger	Chemical Mud								
Turns in Hole	10.5/8.8								
Density/Viscosity	PH								
pH / Fluid Loss	2.5@74degf								
Source of Sample	1.89@74degf								
Run @ Meas. Temp	3@74degf								
Run @ Meas. Temp	Calculated								
Time Calculation Stopped	1.67@114degf								
Time Calculation Stopped	9:00 a.m.								
Maximum Recorded Temperature	111.30 a.m.								
Equipment Number	111 degf								
Location	Hays KS								
Recorded By	L. Smith								
Witnessed By	Mr. Robert Hopkins								
Recorded By	Mr. Fred Ernst								

All interpretations are opinions based on inferences from electrical or other measurements and we cannot and do not guarantee the accuracy or correctness of any interpretation, and we shall not, except in the case of gross or willful negligence on our part, be liable or responsible for any loss, costs, damages, or expenses incurred or sustained by anyone resulting from any interpretation made by any of our officers, agents or employees. These interpretations are also subject to our general terms and conditions set out in our current Price Schedule.

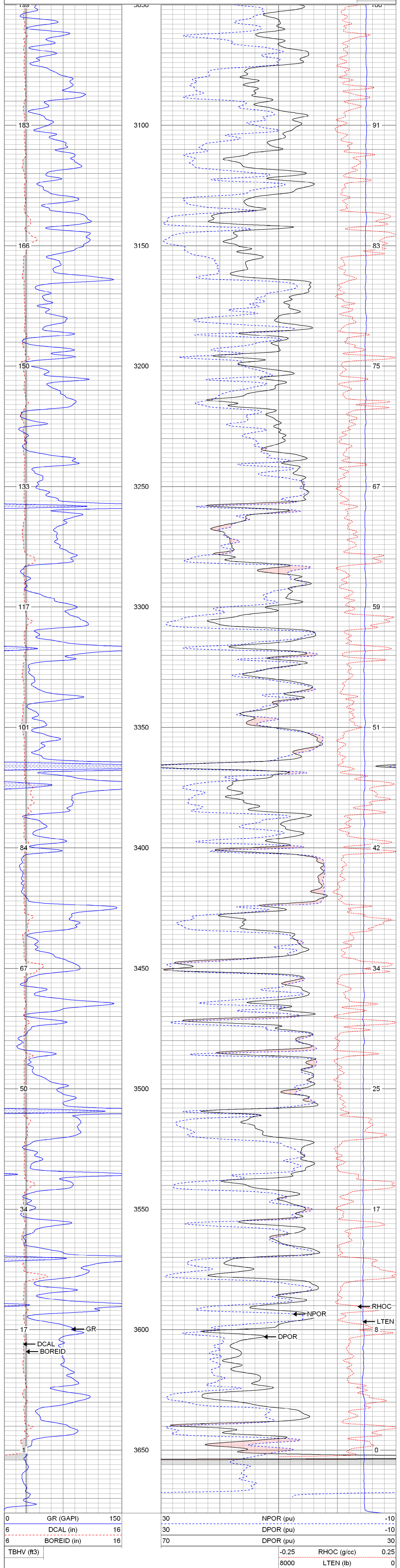
Comments

<<< Fold Here >>>

Database File: eowitt#4oh.db
 Dataset Pathname: pass2
 Presentation Format: kcdml
 Dataset Creation: Mon Aug 27 11:56:26 2012 by Log Open-Cased 100827
 Charted by: Depth in Feet scaled 1:240

0	GR (GAPI)	150	30	NPOR (pu)	-10
6	DCAL (in)	16	30	DPOR (pu)	-10
6	BOREID (in)	16	70	DPOR (pu)	30

TBHV (ft3)	-0.25	RHOC (g/cc)	0.25
	8000	LTEN (lb)	0



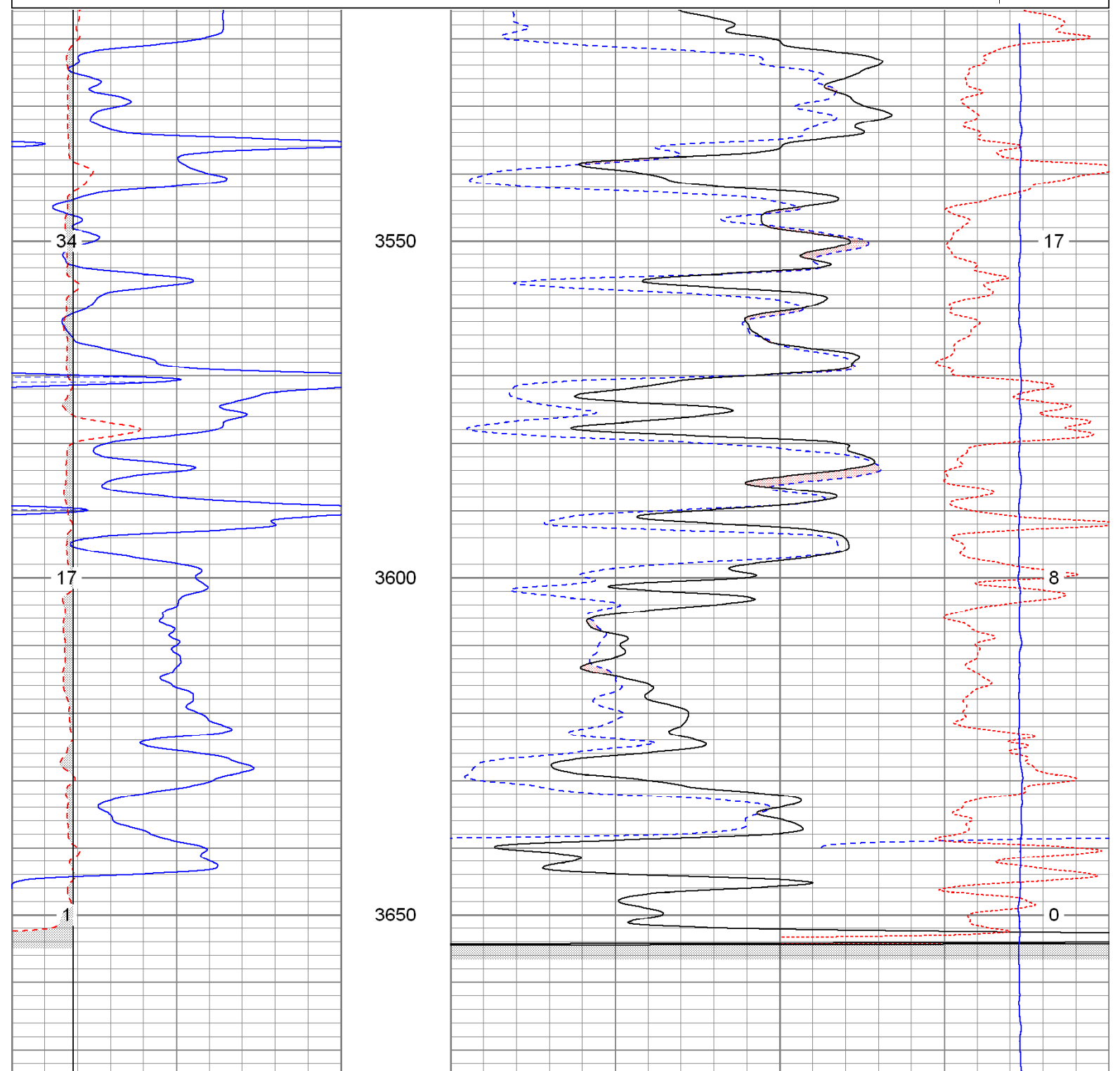
0	GR (GAPI)	150	30	NPOR (pu)	-10
6	DCAL (in)	16	30	DPOR (pu)	-10
6	BOREID (in)	16	70	DPOR (pu)	30

TBHV (ft3)	-0.25	RHOC (g/cc)	0.25
	8000	LTEN (lb)	0

Database File: eowitt#4oh.db
 Dataset Pathname: pass1
 Presentation Format: kcdml
 Dataset Creation: Mon Aug 27 11:47:53 2012 by Log Open-Cased 100827
 Charted by: Depth in Feet scaled 1:240

0	GR (GAPI)	150	30	NPOR (pu)	-10
6	DCAL (in)	16	30	DPOR (pu)	-10
6	BOREID (in)	16	70	DPOR (pu)	30

TBHV (ft3)	-0.25	RHOC (g/cc)	0.25
	8000	LTEN (lb)	0



0	GR (GAPI)	150	30	NPOR (pu)	-10
6	DCAL (in)	16	30	DPOR (pu)	-10
6	BOREID (in)	16	70	DPOR (pu)	30

TBHV (ft3)	-0.25	RHOC (g/cc)	0.25
	8000	LTEN (lb)	0

Database File: eowitt#4oh.db
 Dataset Pathname: pass1
 Dataset Creation: Mon Aug 27 11:47:53 2012 by Log Open-Cased 100827

Calibration Report

Dual Induction Calibration Report

Serial-Model: 5375-G
 Surface Cal Performed: Sun Aug 12 17:49:58 2012
 Downhole Cal Performed: Sun Aug 12 17:50:24 2012

Surface Calibration		Readings		References		Results	
Loop:		Air	Loop	Air	Loop	m	b

Deep	0.003	0.640	V	0.000	350.000	mmho/m	549.198	-1.535
Medium	0.006	0.743	V	0.000	400.000	mmho/m	542.723	-3.445

Internal:		Zero		Cal		m		b	
Deep	0.003	0.640	V	0.000	350.000	mmho/m	549.083	-1.498	
Medium	0.006	0.743	V	0.000	550.000	mmho/m	746.677	-4.721	

Downhole Calibration		Readings		References		Results	
Internal:		Zero	Cal	Zero	Cal	m	b

Deep	-0.476	350.684	mmho/m	-0.037	350.037	mmho/m	0.997	0.438
Medium	-0.470	400.235	mmho/m	-0.013	399.755	mmho/m	0.998	0.456
Shallow	2.469	0.010	V	500.000	2.000	Ohm-m	202.563	-0.086

Compensated Density Calibration Report

Serial-Model: 2501DHT-DHT
 Source / Verifier: /
 Master Calibration Performed: Thu Jul 12 16:14:45 2012

Master Calibration		Density		Far Detector		Near Detector	
Magnesium	1.750	g/cc		712.68	268.30	cps	
Aluminum	2.680	g/cc		135.13	184.00	cps	

Spine Angle = 77.22 Density/Spine Ratio = 0.545

Gamma Ray Calibration Report		Reading	
Small Ring	7.65	in	6273.19
Large Ring	14.00	in	10676.90

Serial Number: 2001
 Tool Model: OH
 Performed: Sat Jun 30 01:22:23 2012

Calibrator Value: 1.0 GAPI
 Background Reading: 0.0 cps
 Sensitivity: 0.2300 GAPI/cps

Neutron Calibration Report

Serial Number: 5108
 Tool Model: PROBE
 Performed: Wed Jun 27 12:59:57 2012

Calibrator Value: 1 NAPI
 Calibrator Reading: 1 cps
 Sensitivity: 1 NAPI/cps

Sensor	Offset (ft)	Schematic	Description	Len (ft)	OD (in)	Wt (lb)
--------	-------------	-----------	-------------	----------	---------	---------

NEU	37.85		None	0.75	1.50	5.00
-----	-------	--	------	------	------	------

GR	32.32		NEU-PROBE (5108) Probe	4.92	3.63	85.00
----	-------	--	---------------------------	------	------	-------

LSD	23.78		GR-OH (2001) 2001	3.56	3.25	40.00
-----	-------	--	----------------------	------	------	-------

DCAL	23.49		CDL-DHT (2501DHT) Digital High Temp CDL Tool	9.69	4.00	201.00
------	-------	--	---	------	------	--------

SSD	23.24		DIL-G (5375) Gearhart	21.47	4.00	345.00
-----	-------	--	--------------------------	-------	------	--------

HEADVOLT	21.47					
----------	-------	--	--	--	--	--

CILD	10.60					
------	-------	--	--	--	--	--

SP	10.60					
----	-------	--	--	--	--	--

CILM	6.89					
------	------	--	--	--	--	--

RLL3	1.70					
------	------	--	--	--	--	--

Dataset: eowitt#4oh.db: field/well/run1/pass1
 Total Length: 40.39 ft
 Total Weight: 676.00 lb
 O.D.: 4.00 in