



Microresistivity Log

DIGITAL LOG (785) 625-3858

15-137-20,584-00-00

API No.

Company **Klabzuba Oil & Gas, Inc.**

Well **Brooks No. 34-11-3-25**

Field

County **Norton** State **Kansas**

Location **1520' FSL & 1550' FWL**

Sec: **34** Twp: **3 S** Rge: **25 W**

Permanent Datum **Ground Level** Elevation **2450**

Log Measured From **Kelly Bushing** 7 Ft. Above Perm. Datum

Drilling Measured From **Kelly Bushing**

Other Services
CNL/CDL
DIL/BHCS

Elevation
K.B. 2457
D.F.
G.L. 2450

Date **1/12/2012**

Run Number **Two**

Depth Driller **4000**

Depth Logger **4001**

Bottom Logged Interval **4000**

Top Log Interval **3200**

Casing Driller **8.625 @ 264**

Casing Logger **264**

Bit Size **7.875**

Type Fluid in Hole **Chemical**

Salinity, ppm CL **1,500**

Density / Viscosity **9.3 53**

pH / Fluid Loss **10.0 7.6**

Source of Sample **Flowline**

Rm @ Meas. Temp **1.25 @ 50**

Rmf @ Meas. Temp **.94 @ 50**

Rmc @ Meas. Temp **1.69 @ 50**

Source of Rmf / Rmc **Charts**

Rm @ BHT **.53 @ 118**

Operating Rig Time **5 Hours**

Max Rec. Temp. F **118**

Equipment Number **91**

Location **Hays**

Recorded By **K. Bange**

Witnessed By **Richard Bell**

<<< Fold Here >>>

All interpretations are opinions based on inferences from electrical or other measurements and we cannot and do not guarantee the accuracy or correctness of any interpretation, and we shall not, except in the case of gross or willful negligence on our part, be liable or responsible for any loss, costs, damages, or expenses incurred or sustained by anyone resulting from any interpretation made by any of our officers, agents or employees. These interpretations are also subject to our general terms and conditions set out in our current Price Schedule.

Comments

Thank you for using Log-Tech, Inc.
(785) 625-3858

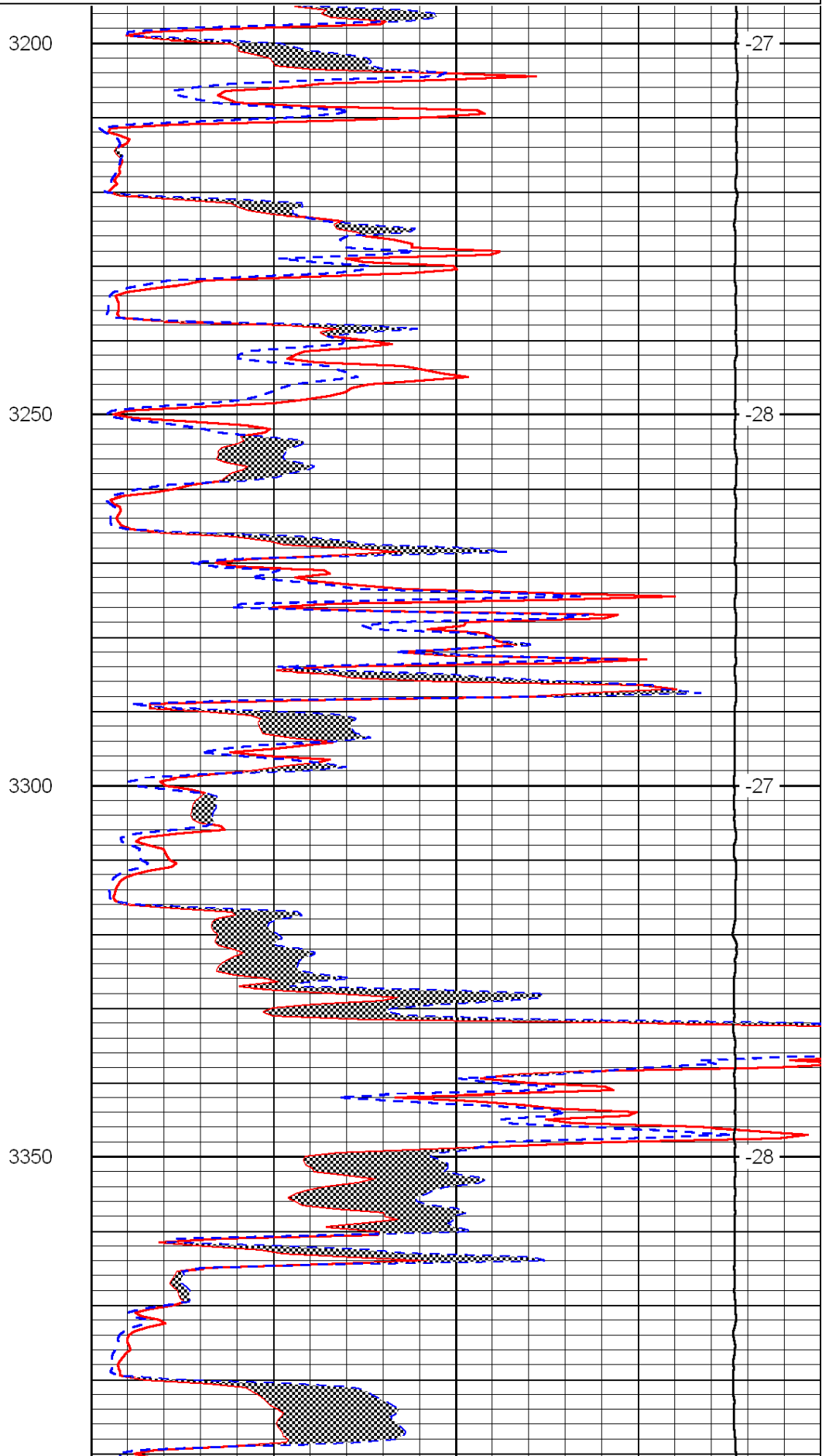
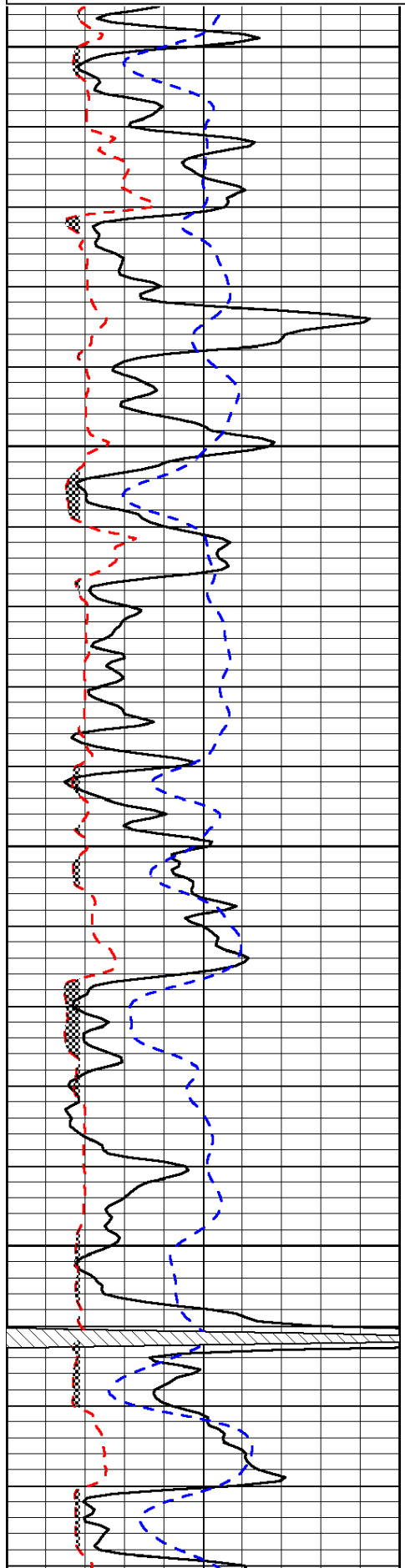
New Almelo KS, 1 W to Clayton rd, N to correction curve,
1 W to W14 rd, 4 N to S rd, 1 1/4 E, N into

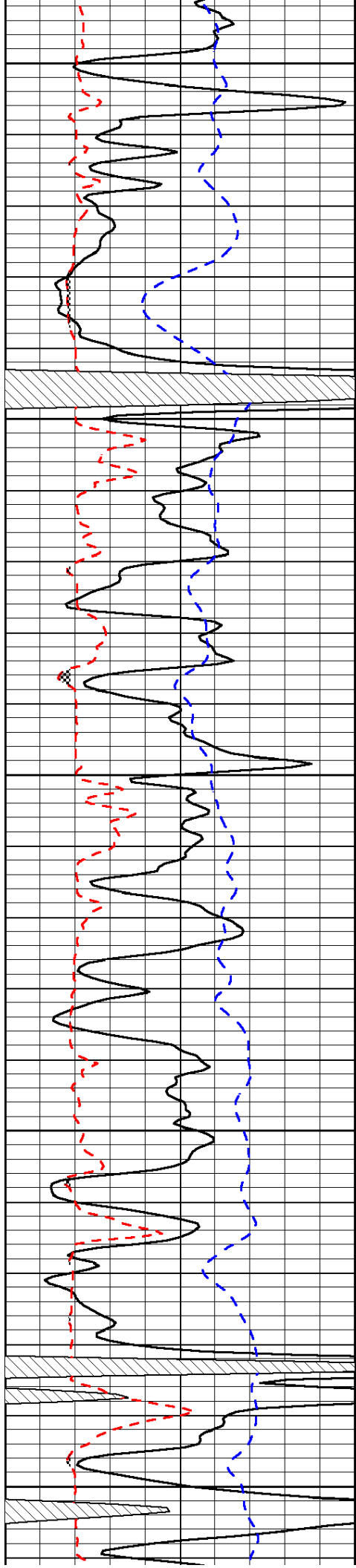
Database File: c:\warrior\data\klabzuba_brooks no. 34-11-3-25\klabzuba011212hd.db
 Dataset Pathname: dil/klabstack
 Presentation Format: micro
 Dataset Creation: Thu Jan 12 05:22:10 2012
 Charted by: Depth in Feet scaled 1:240

| | | |
|------|--------------------------|-----|
| 0 | Gamma Ray | 150 |
| 6 | Micro Log Caliper (GAPI) | 16 |
| -200 | SP (mV) | 0 |

| | | |
|-------|---------------------|----|
| 0 | Micro Inverse 1 X 1 | 40 |
| 0 | Micro Normal 2" | 40 |
| 15000 | Line Weight | 0 |

LSPD





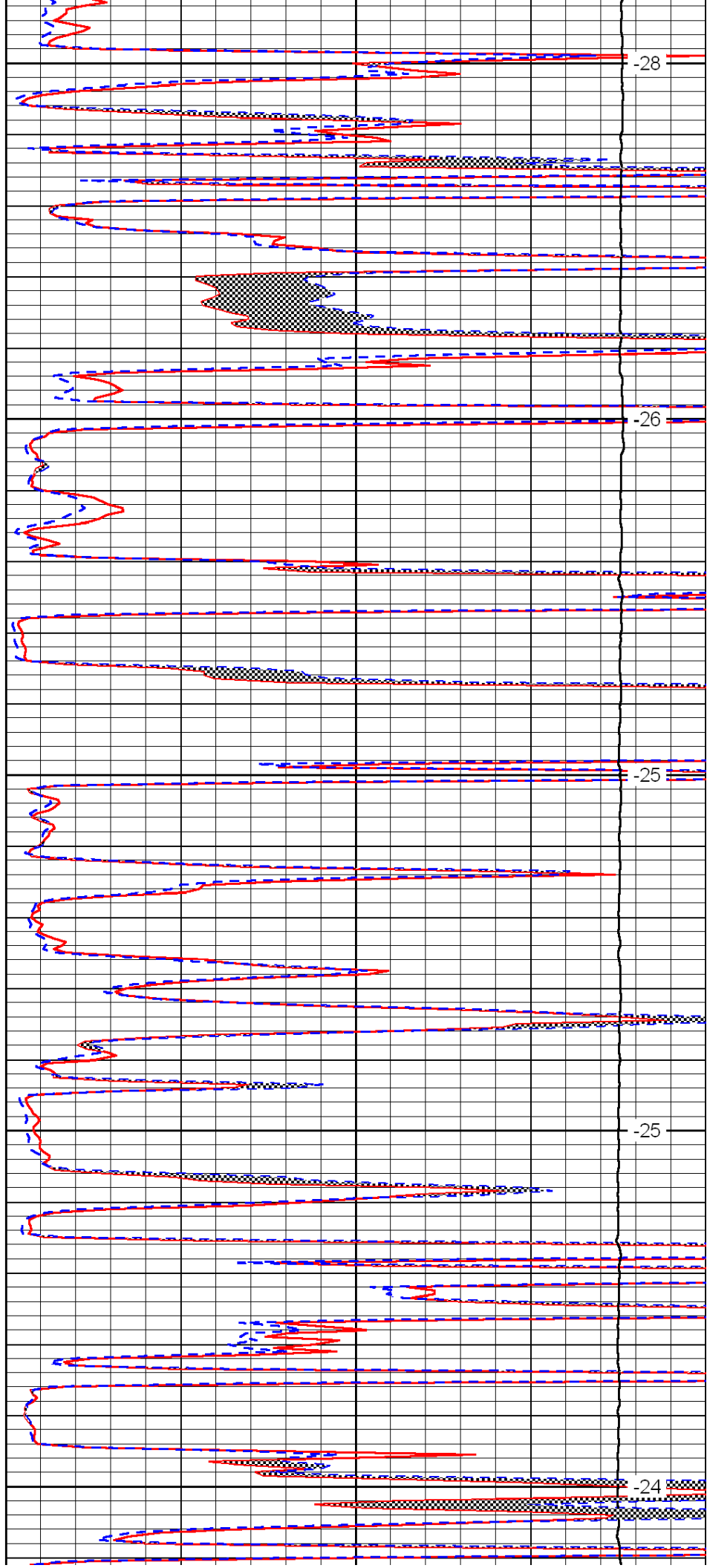
3400

3450

3500

3550

3600



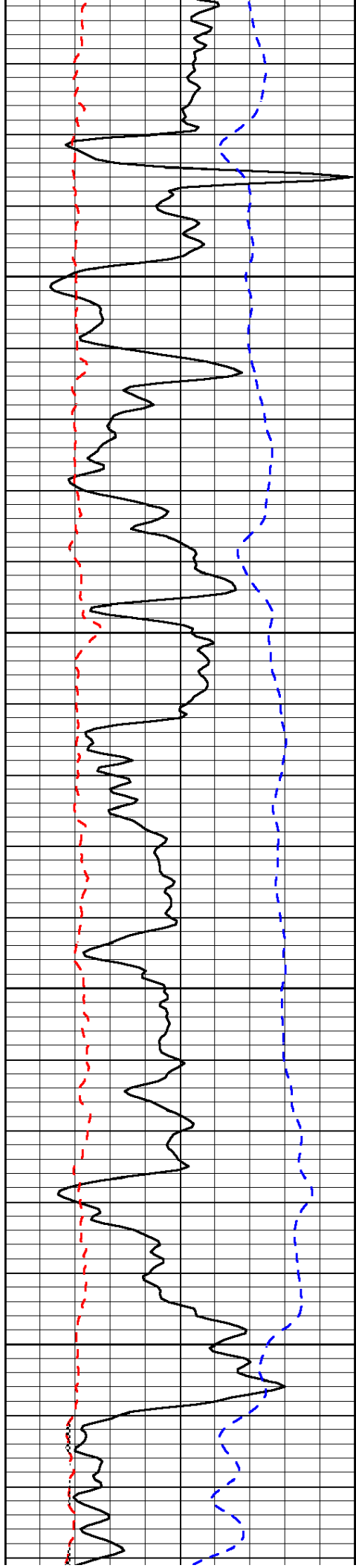
-28

-26

-25

-25

-24

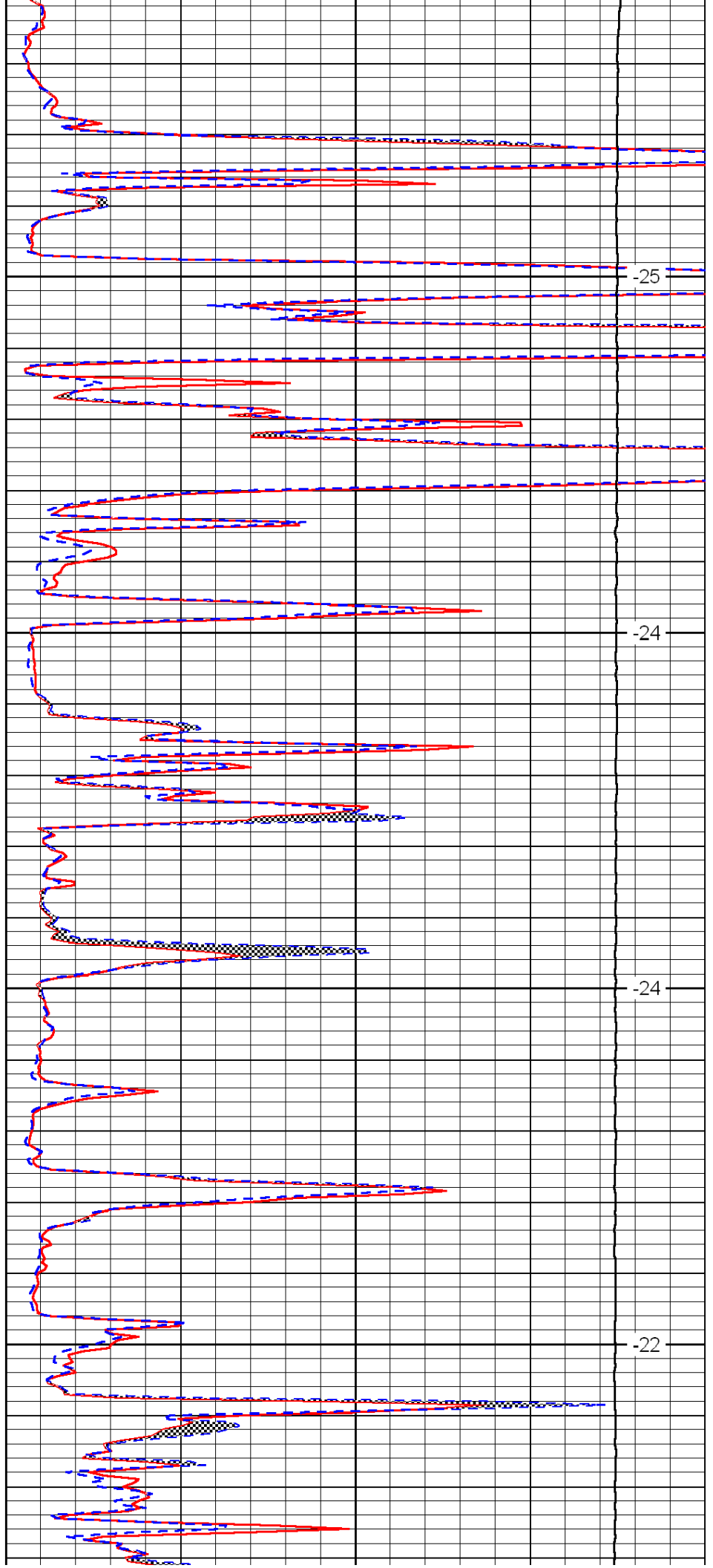


3650

3700

3750

3800

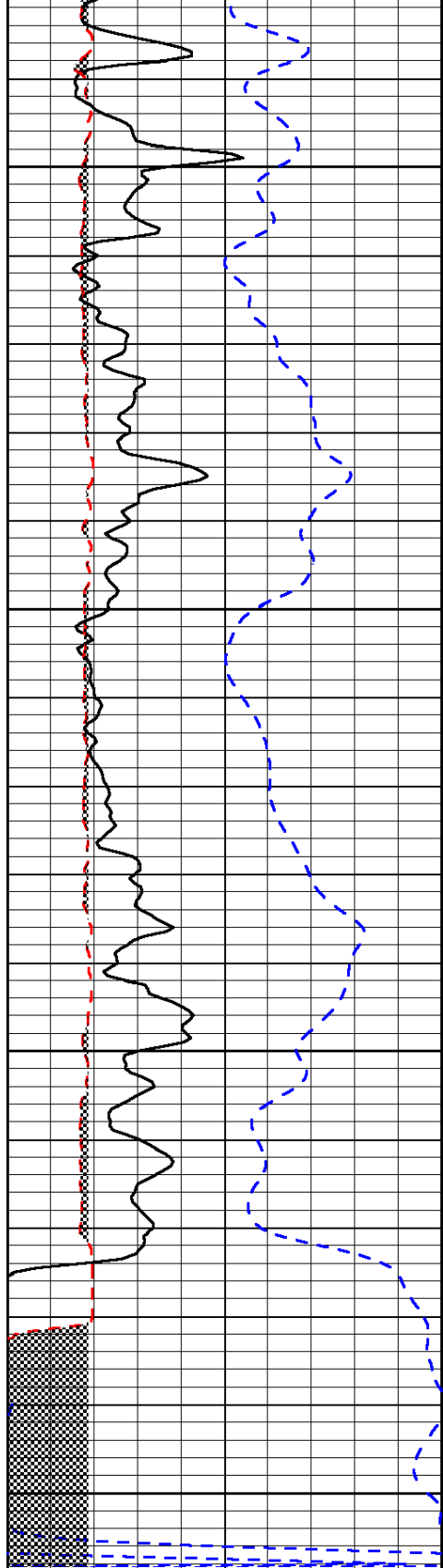


-25

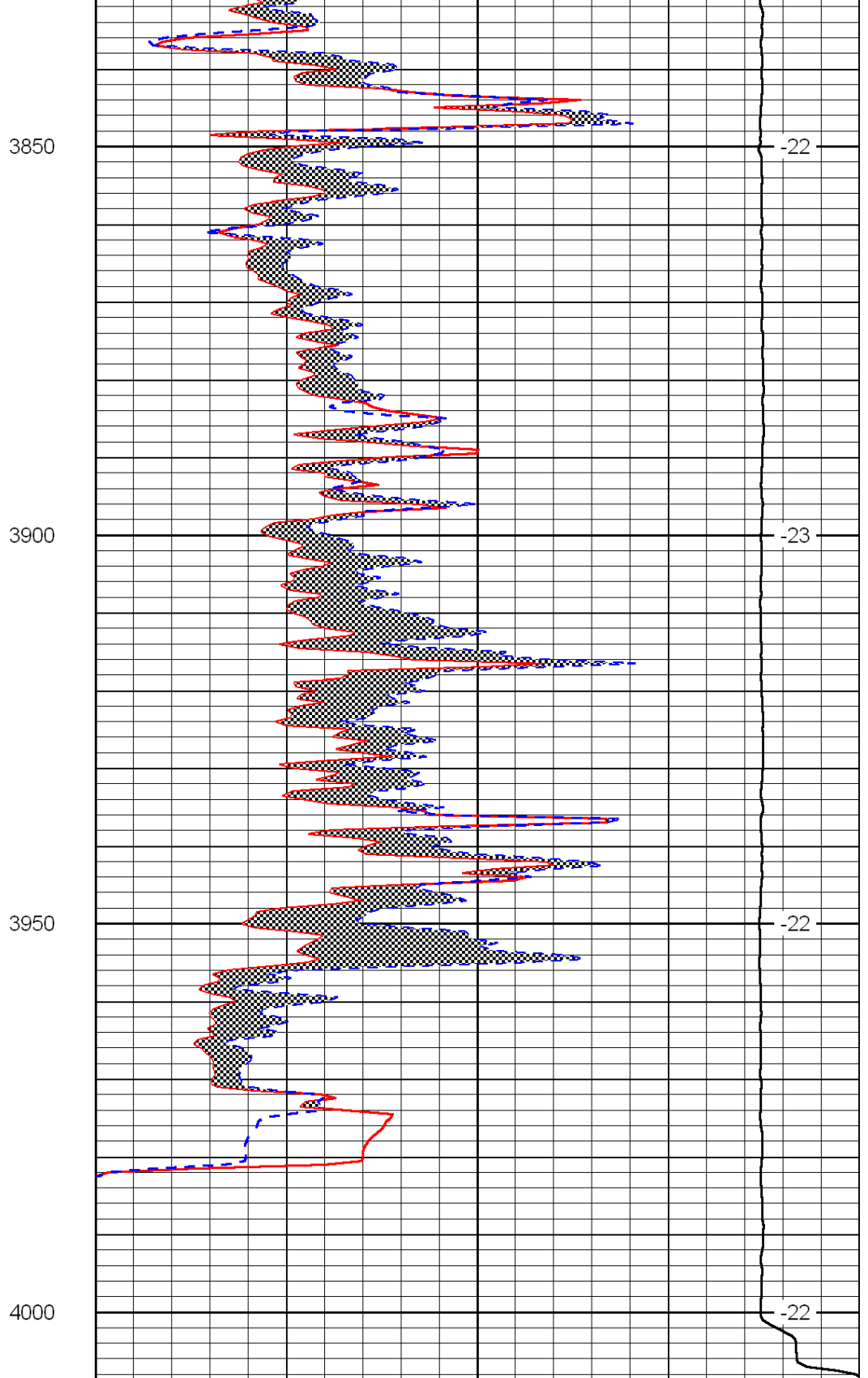
-24

-24

-22



| | | |
|------|--------------------------|-----|
| 0 | Gamma Ray | 150 |
| 6 | Micro Log Caliper (GAPI) | 16 |
| -200 | SP (mV) | 0 |



| | | |
|-------|---------------------|----|
| 0 | Micro Inverse 1 X 1 | 40 |
| 0 | Micro Normal 2'' | 40 |
| 15000 | Line Weight | 0 |

LSPD