



Dual Compensated
Porosity Log

DIGITAL LOG (785) 625-3858

15-137-20,584-00-00

API No. 15-137-20,584-00-00
 Company Klabzuba Oil & Gas, Inc.
 Well Brooks No. 34-11-3-25
 Field
 County Norton
 State Kansas
 Location 1520' FSL & 1550' FWL
 Sec: 34 Twp: 3 S Rge: 25 W

Other Services
 DIL
 MEI/BHCS
 Elevation
 K.B. 2457
 D.F.
 G.L. 2450

Permanent Datum Ground Level Elevation 2450
 Log Measured From Kelly Bushing 7 Ft. Above Perm. Datum
 Drilling Measured From Kelly Bushing

Date 1/12/2012
 Run Number One
 Type Log CNL / CDL
 Depth Driller 4000
 Depth Logger 4001
 Bottom Logged Interval 3980
 Top Logged Interval 3200
 Type Fluid In Hole Chemical
 Salinity, PPM CL 1,500
 Density 9.3
 Level Full
 Max. Rec. Temp. F 118
 Operating Rig Time 5 Hours
 Equipment -- Location 91 Hays
 Recorded By K. Bange
 Witnessed By Richard Bell

Borehole Record				Casing Record			
Run No.	Bit	From	To	Size	Wgt.	From	To
1	12.25	00	264	8.625	24#	00	264
2	7.875	264	4000				

<<< Fold Here >>>

All interpretations are opinions based on inferences from electrical or other measurements and we cannot and do not guarantee the accuracy or correctness of any interpretation, and we shall not, except in the case of gross or willful negligence on our part, be liable or responsible for any loss, costs, damages, or expenses incurred or sustained by anyone resulting from any interpretation made by any of our officers, agents or employees. These interpretations are also subject to our general terms and conditions set out in our current Price Schedule.

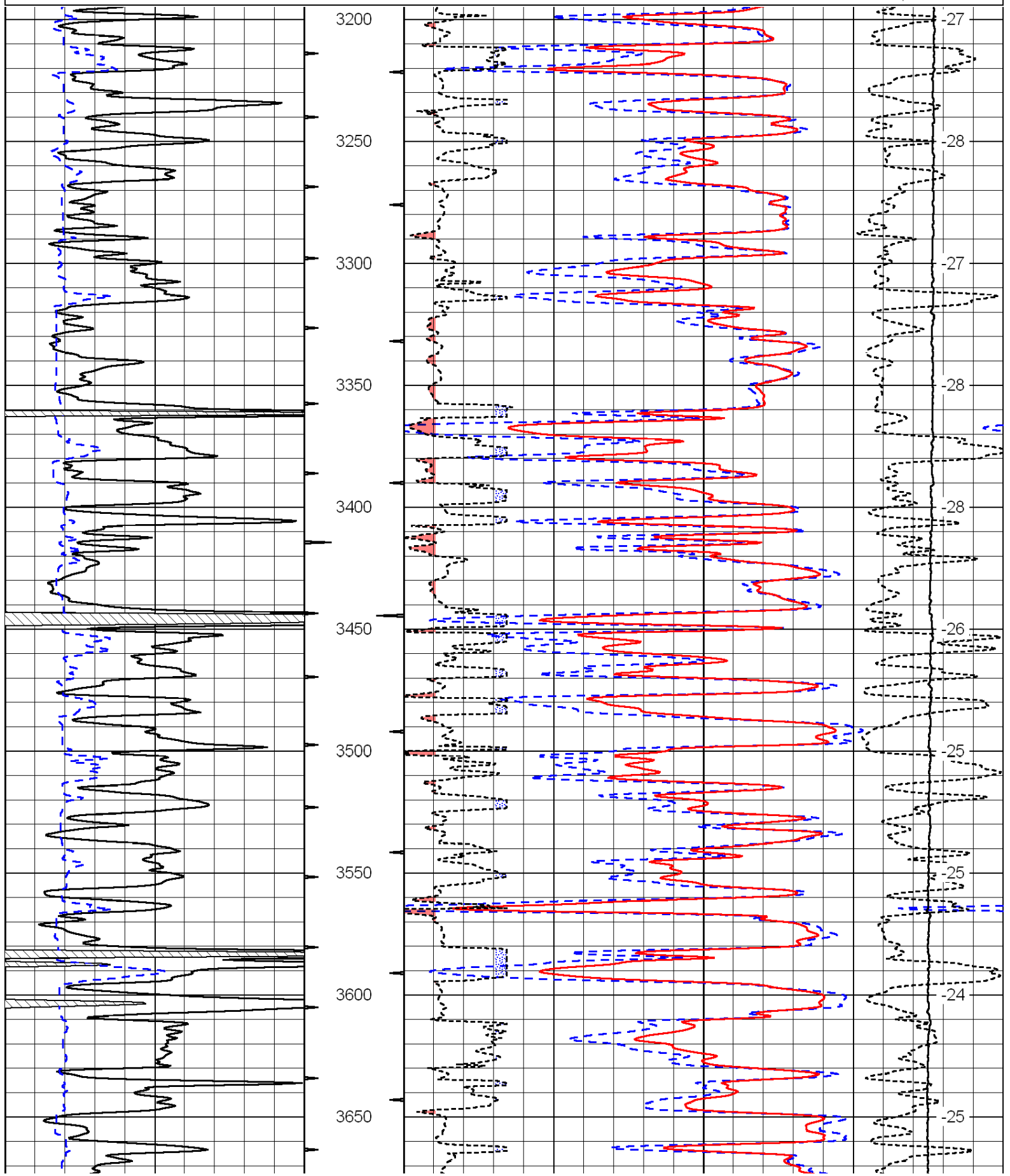
Comments

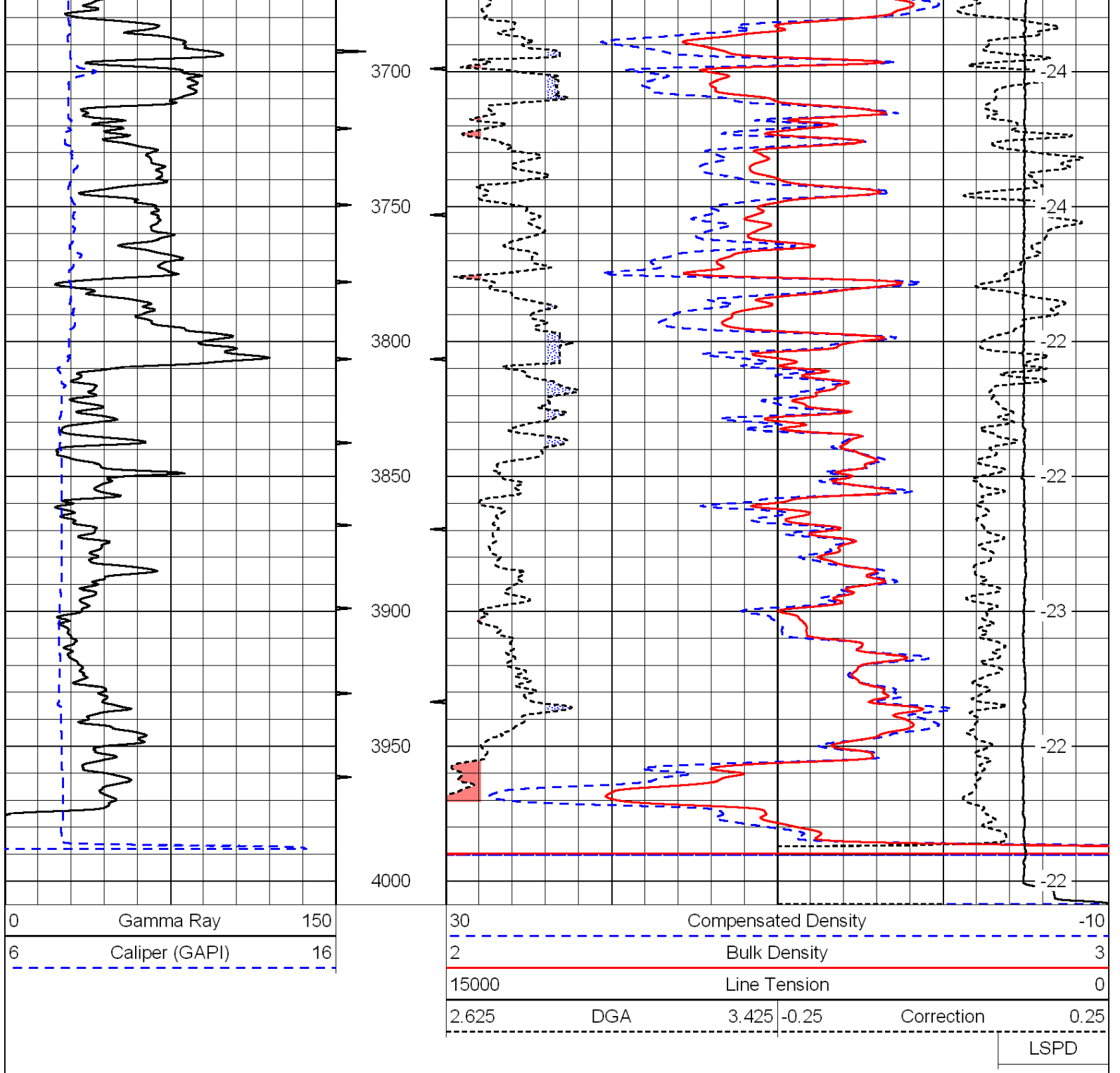
Thank you for using Log-Tech, Inc.
 (785) 625-3858
 New Almelo KS, 1 W to Clayton rd, N to correction curve,
 1 W to W14 rd, 4 N to S rd, 1 1/4 E, N into

0	Gamma Ray	150
6	Caliper (GAPI)	16

30	Compensated Density		-10
2	Bulk Density		3
15000	Line Tension		0
2.625	DGA	3.425	-0.25
Correction			0.25

LSPD





Database File: c:\warrior\data\klabzuba_brooks no. 34-11-3-25\klabzuba011212hd.db
 Dataset Pathname: dil/klabstack
 Presentation Format: cndlspec
 Dataset Creation: Thu Jan 12 05:22:10 2012
 Charted by: Depth in Feet scaled 1:240

