



Microresistivity Log

DIGITAL LOG (785) 625-3858

15-051-26,259-00-00

API No.	Company	15-051-26,259-00-00	Klabzuba Oil & Gas, Inc.
	Well		North Trust #3-10-15-20
	Field		N/A
	County	Elilis	State
	Location	SE SW NW SE 1430' FSL & 2170' FEL	Kansas
	Sec: 3	Twp: 15S	Rge: 20W
	Permanent Datum	Ground Level	Elevation 2040
	Log Measured From	Kelly Bushing	8 Ft. Above Perm. Datum
	Drilling Measured From	Kelly Bushing	
			Other Services CNL/CDL DIL/BHCS
			Elevation K.B. 2048 D.F. 2040 G.L. 2040

Date	2/21/2012
Run Number	Two
Depth Driller	3883
Depth Logger	3880
Bottom Logged Interval	3879
Top Log Interval	2900
Casing Driller	8.625 @ 263
Casing Logger	262
Bit Size	7.875
Type Fluid in Hole	Chemical
Salinity, ppm CL	5000
Density / Viscosity	9.1 65
pH / Fluid Loss	10.5 7.6
Source of Sample	Flowline
Rm @ Meas. Temp	.50 @ 50
Rmf @ Meas. Temp	.38 @ 50
Rmc @ Meas. Temp	.68 @ 50
Source of Rmf / Rmc	Charts
Rm @ BHT	.21 @ 117
Operating Rig Time	5 Hours
Max Rec. Temp. F	117
Equipment Number	91
Location	Hays
Recorded By	D. Schmidt
Witnessed By	Dave Goldak

<<< Fold Here >>>

All interpretations are opinions based on inferences from electrical or other measurements and we cannot and do not guarantee the accuracy or correctness of any interpretation, and we shall not, except in the case of gross or willful negligence on our part, be liable or responsible for any loss, costs, damages, or expenses incurred or sustained by anyone resulting from any interpretation made by any of our officers, agents or employees. These interpretations are also subject to our general terms and conditions set out in our current Price Schedule.

Comments

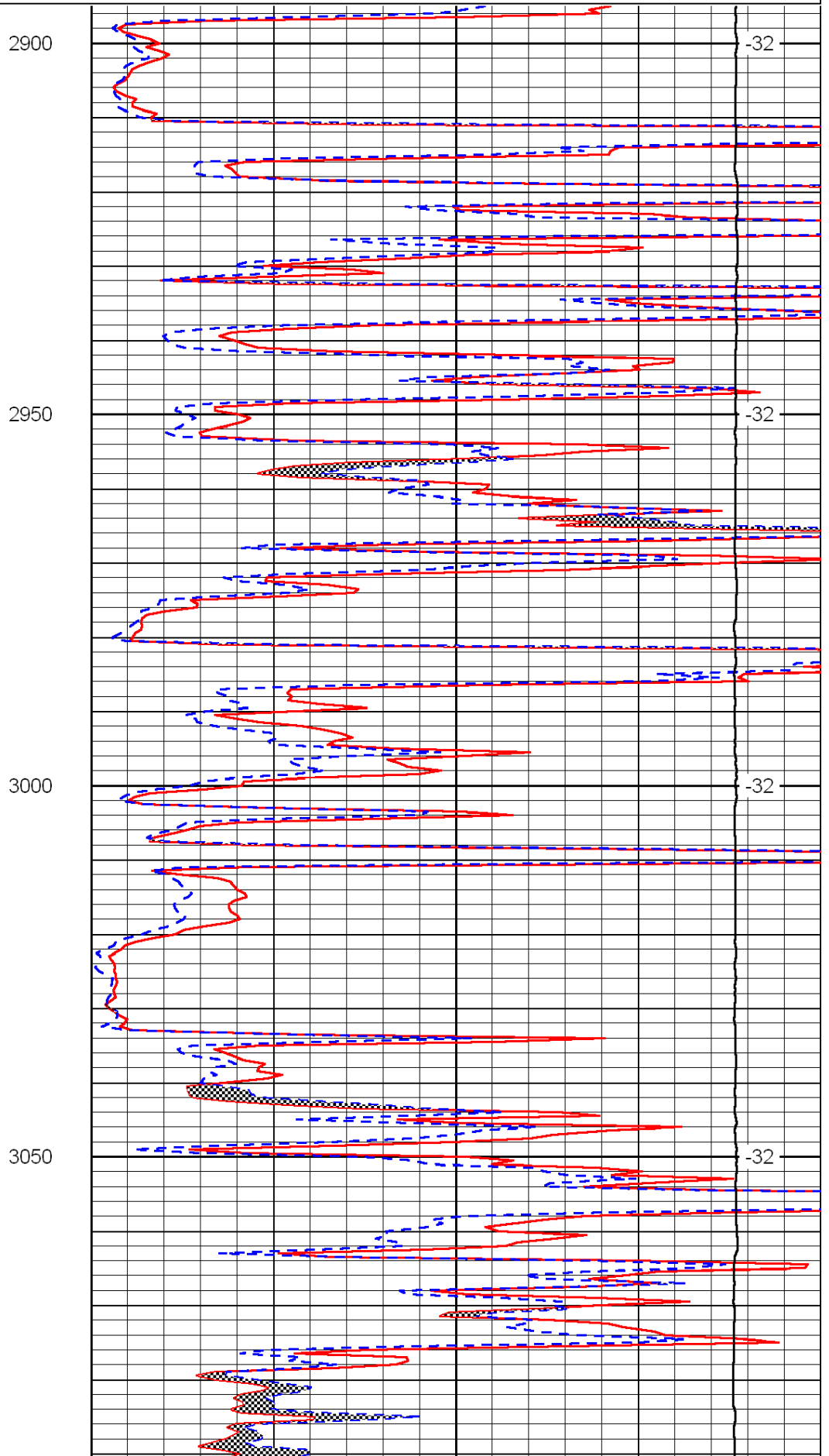
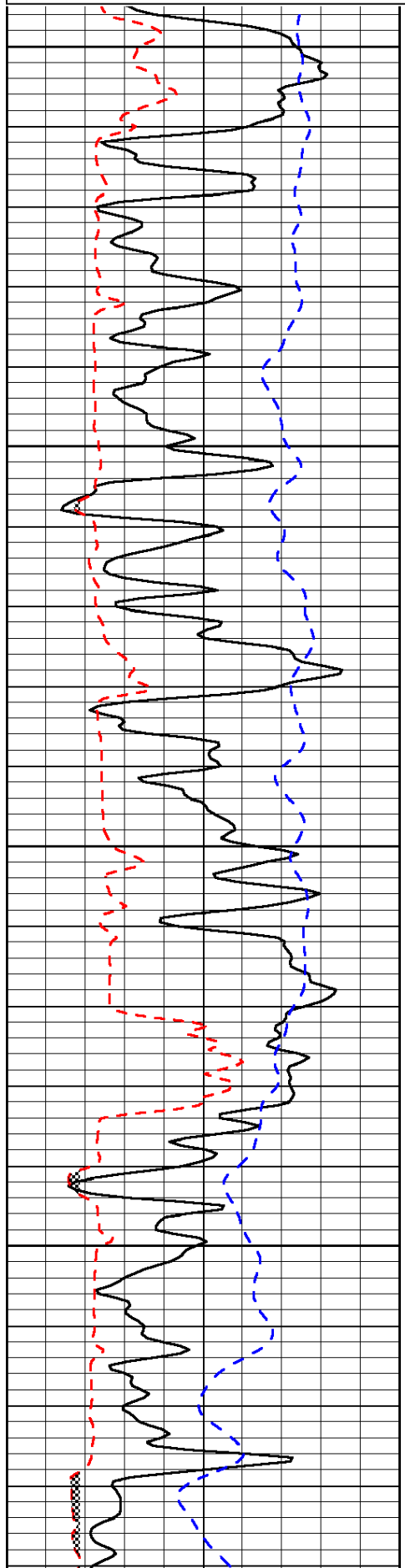
Thank you for using Log-Tech, Inc.
 (785) 625-3858

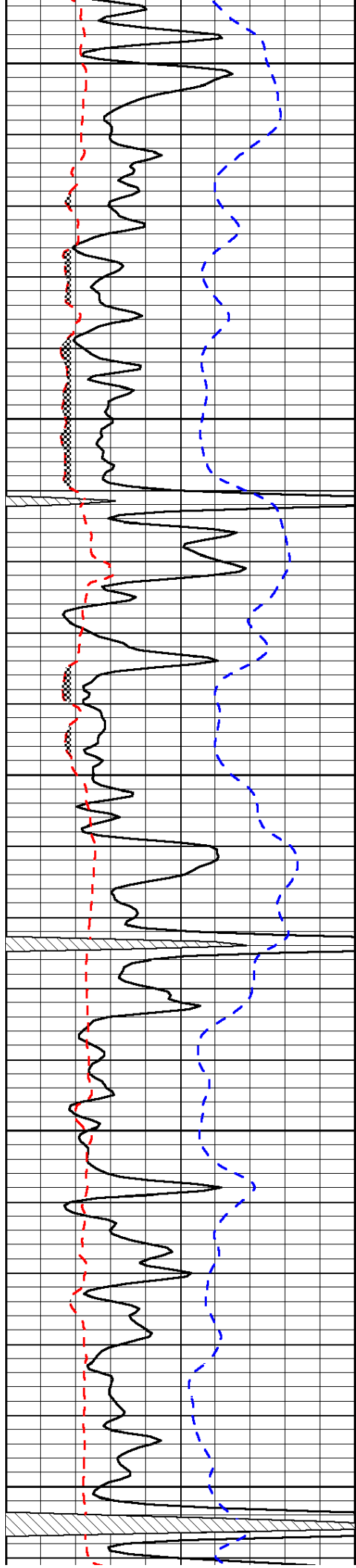
Antonino,
 W to 140th, 1/2 S,
 W into

0	Gamma Ray	150
6	Micro Log Caliper (GAPI)	16
-200	SP (mV)	0

0	Micro Inverse 1 X 1	40
0	Micro Normal 2"	40
15000	Line Weight	0

LSPD





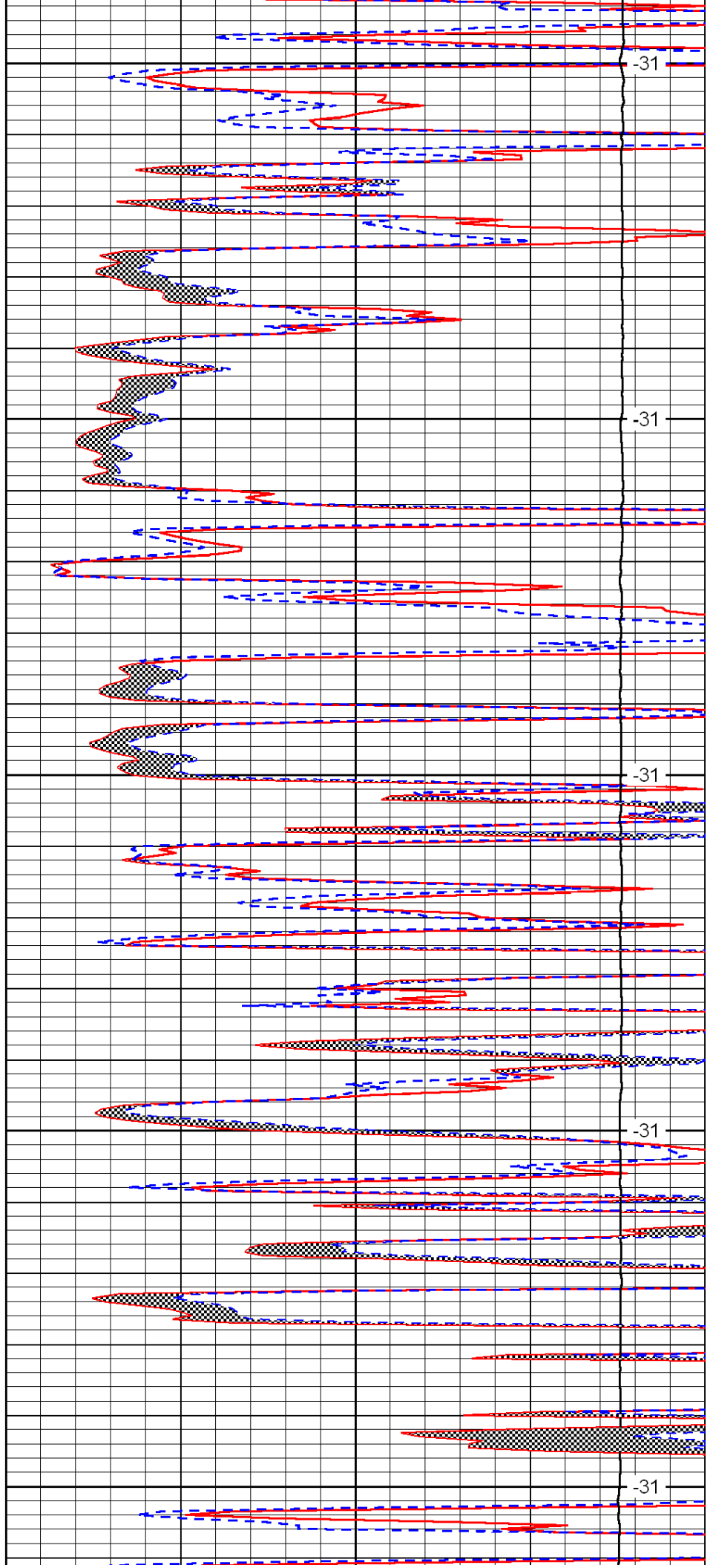
3100

3150

3200

3250

3300



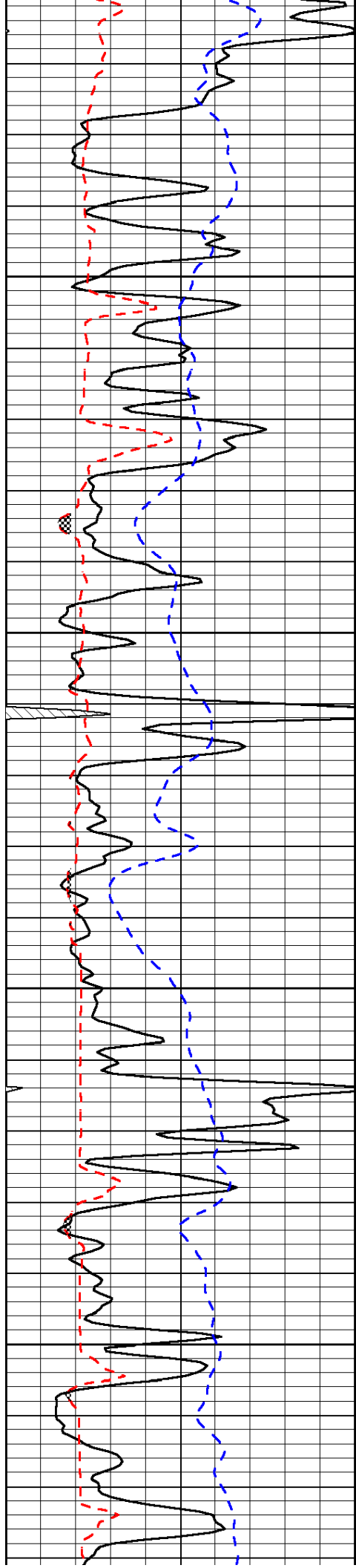
-31

-31

-31

-31

-31

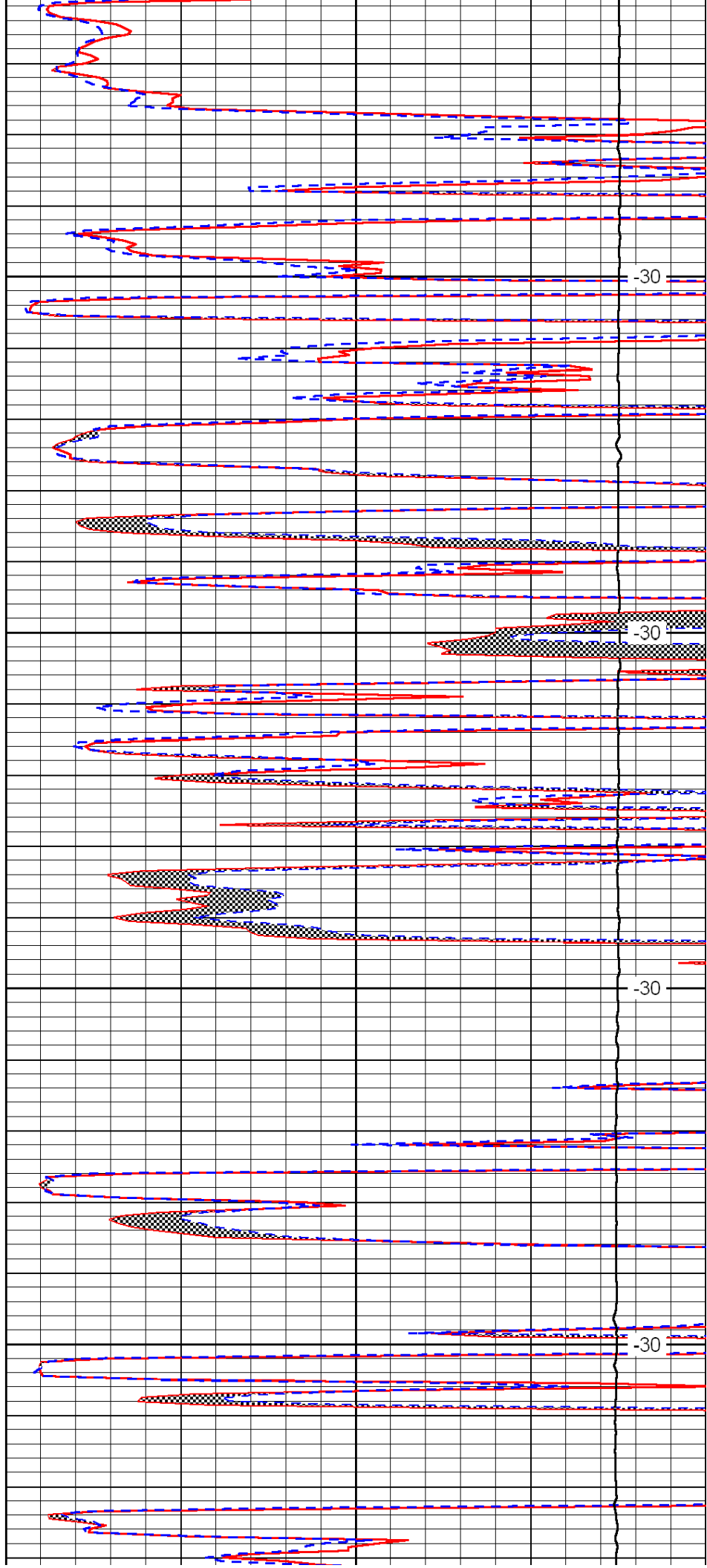


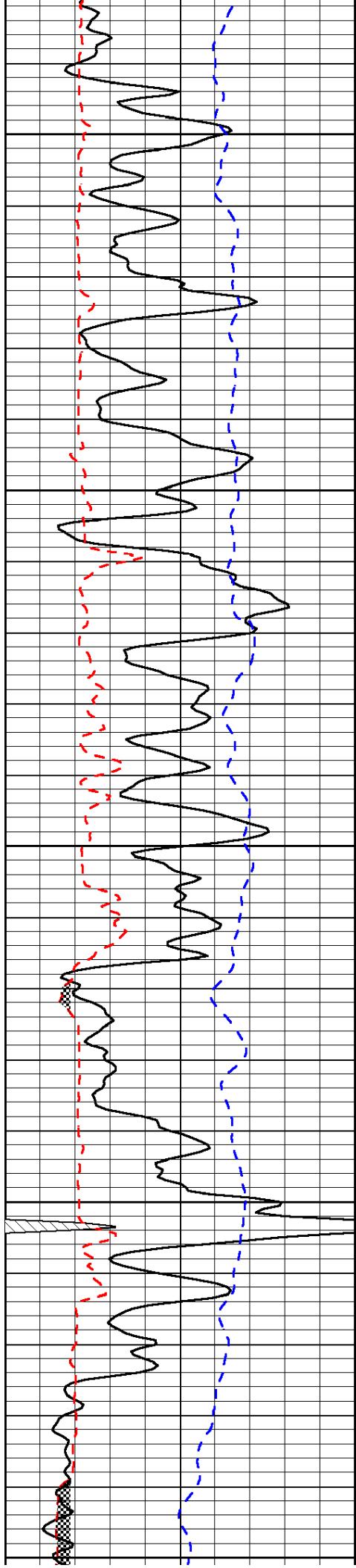
3350

3400

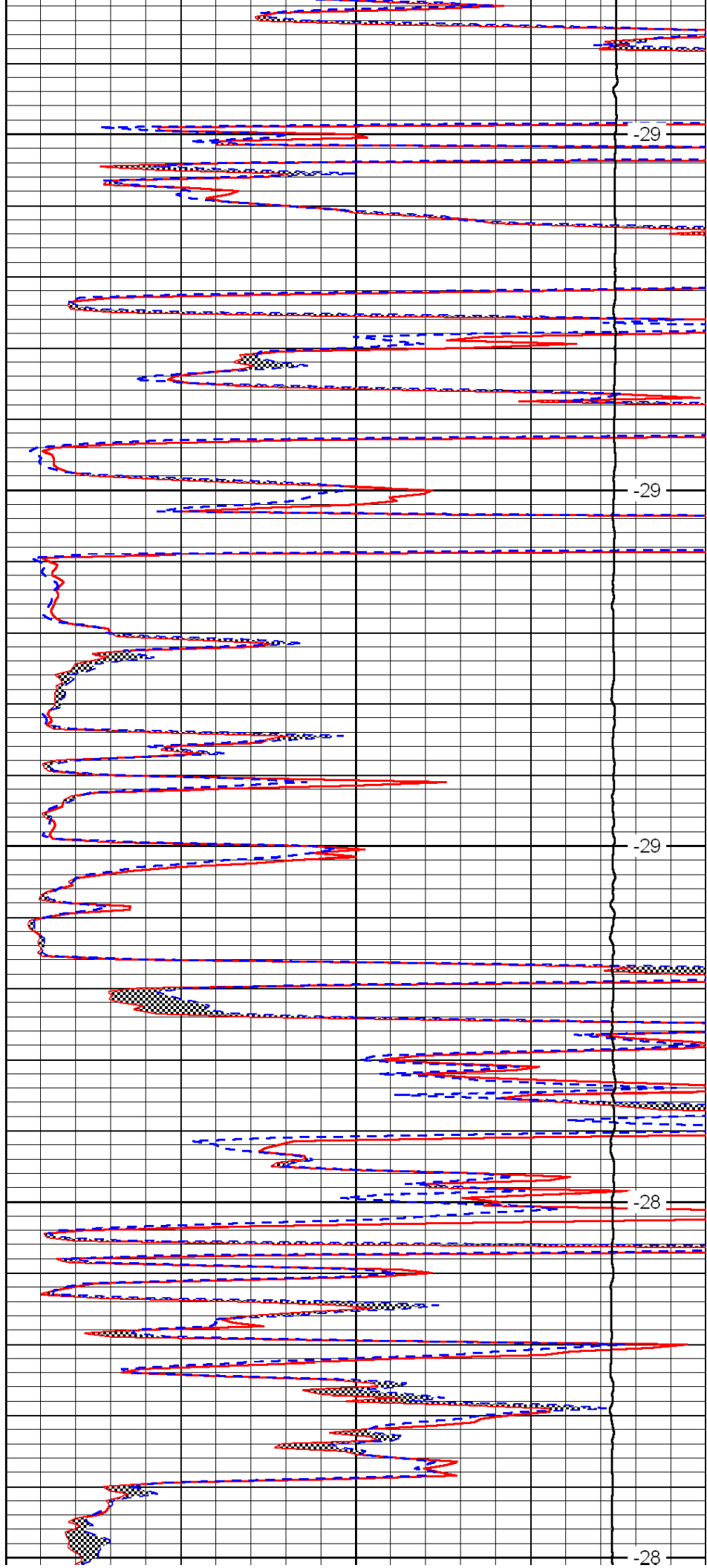
3450

3500

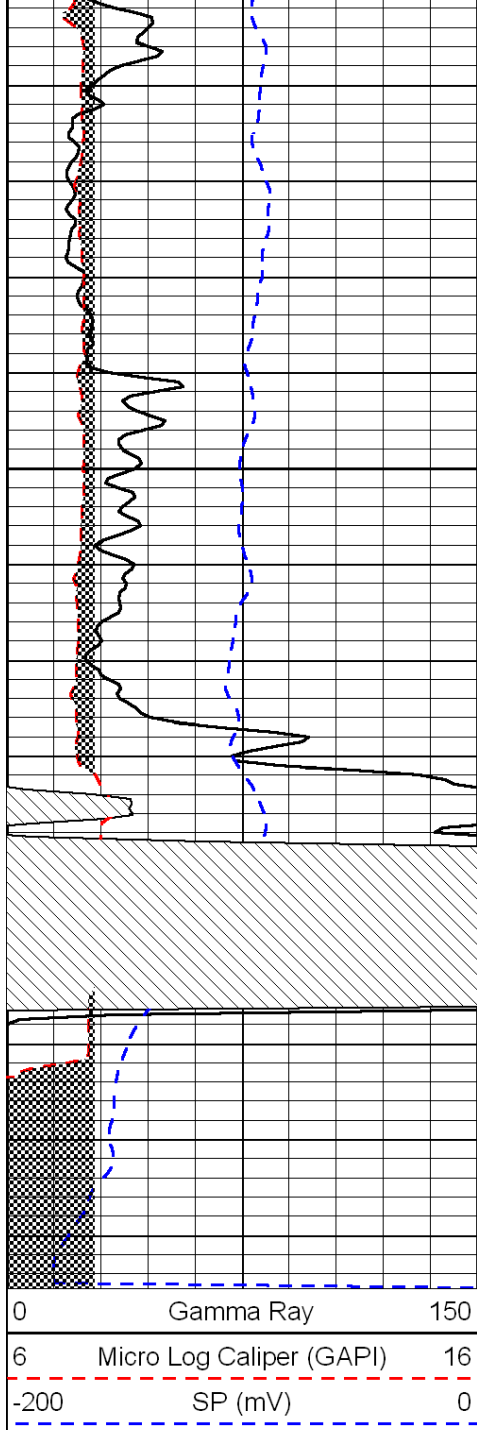




3550
3600
3650
3700
3750

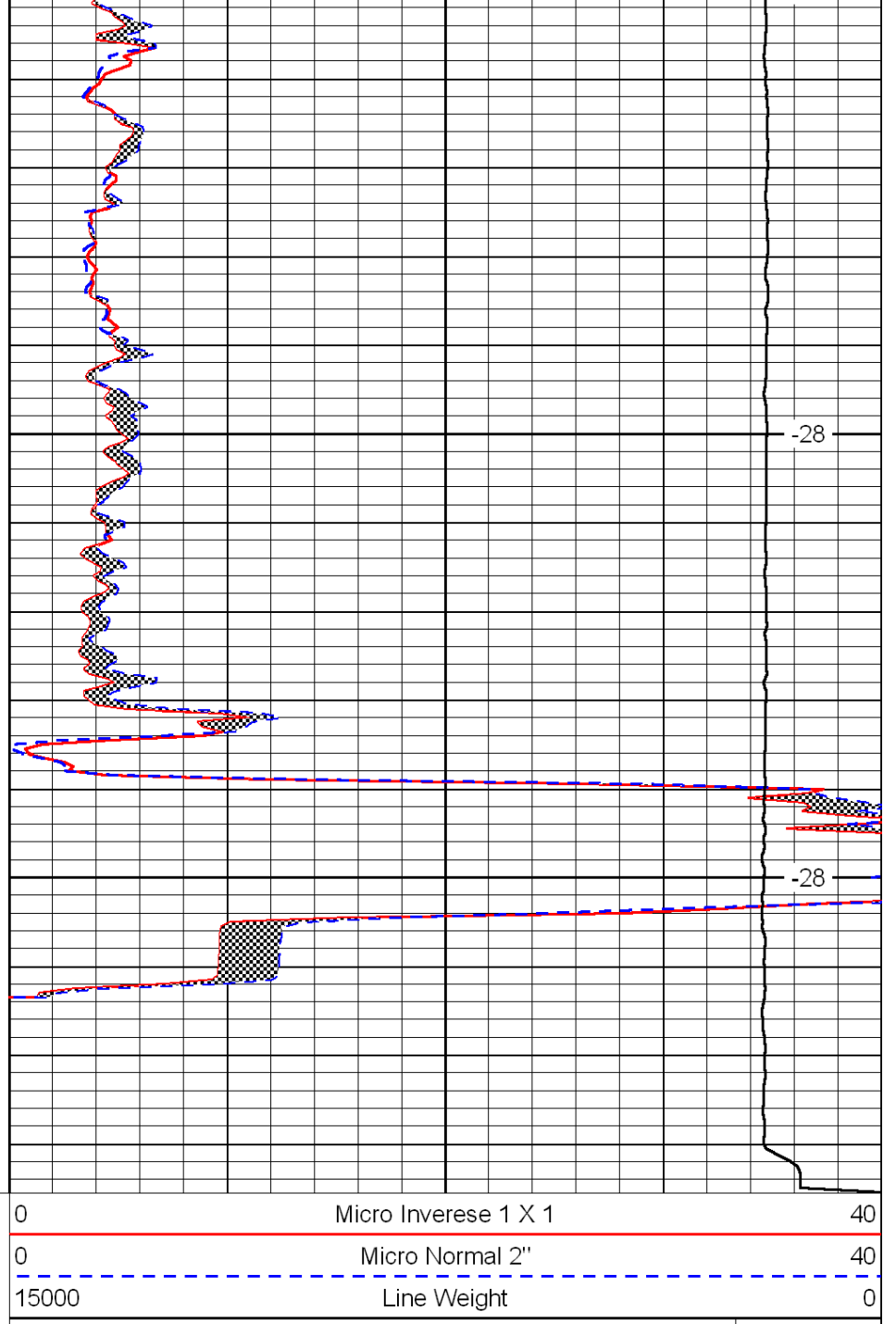


-29
-29
-29
-28
-28



3800

3850



-28

-28

LSPD