

# LOG-TECH



## Dual Induction Log

DIGITAL LOG (785) 625-3858

15-051-26,259-00-00

API No.	Company	Clabzuba Oil & Gas, Inc.
	Well	North Trust #3-10-15-20
	Field	N/A
	County	Elilis
	State	Kansas
Location	SE SW NW SE 1430' FSL & 2170' FEL	
Sec: 3	Twp: 15S	Rge: 20W
Permanent Datum	Ground Level	Elevation 2040
Log Measured From	Kelly Bushing	8 Ft. Above Perm. Datum
Drilling Measured From	Kelly Bushing	
		Other Services CNL/CDL MEL/BHCS
		Elevation K.B. 2048 D.F. 2040 G.L. 2040

Date	2/21/2012
Run Number	One
Depth Driller	3883
Depth Logger	3880
Bottom Logged Interval	3879
Top Log Interval	250
Casing Driller	8.625 @ 263
Casing Logger	262
Bit Size	7.875
Type Fluid in Hole	Chemical
Salinity, ppm CL	5000
Density / Viscosity	9.1   65
pH / Fluid Loss	10.5   7.6
Source of Sample	Flowline
Rm @ Meas. Temp	.50 @ 50
Rmf @ Meas. Temp	.38 @ 50
Rmc @ Meas. Temp	.68 @ 50
Source of Rmf / Rmc	Charts
Rm @ BHT	.21 @ 117
Operating Rig Time	5 Hours
Max Rec. Temp. F	117
Equipment Number	91
Location	Hays
Recorded By	D. Schmidt
Witnessed By	Dave Goldak

<<< Fold Here >>>

All interpretations are opinions based on inferences from electrical or other measurements and we cannot and do not guarantee the accuracy or correctness of any interpretation, and we shall not, except in the case of gross or willful negligence on our part, be liable or responsible for any loss, costs, damages, or expenses incurred or sustained by anyone resulting from any interpretation made by any of our officers, agents or employees. These interpretations are also subject to our general terms and conditions set out in our current Price Schedule.

### Comments

Thank you for using Log-Tech, Inc.  
 (785) 625-3858  
  
 Antonino,  
 W to 140th, 1/2 S,  
 W into

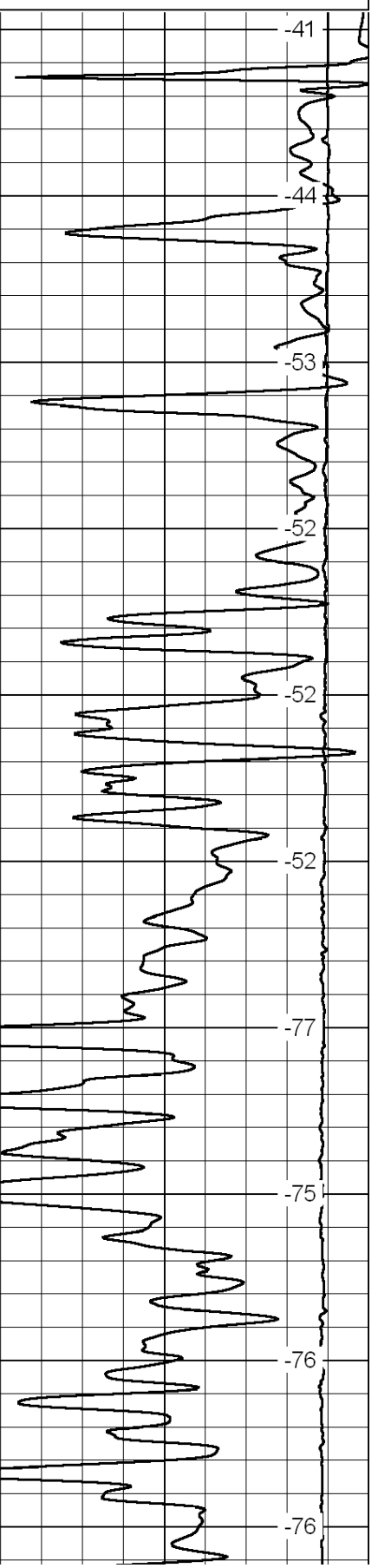
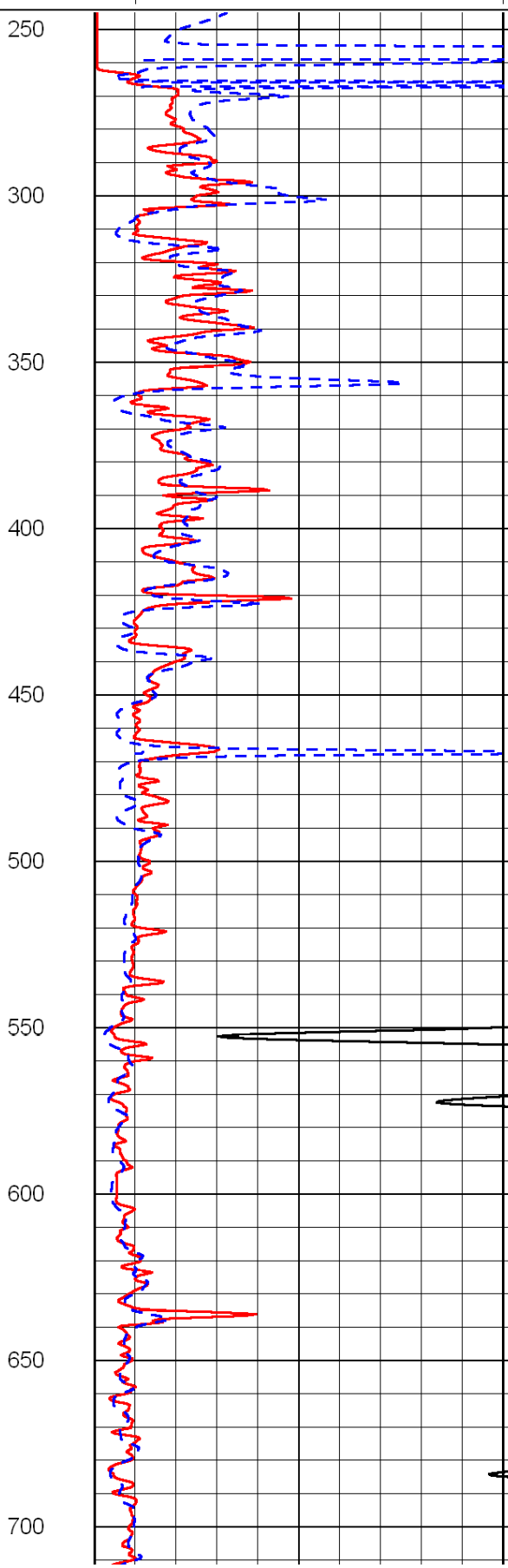
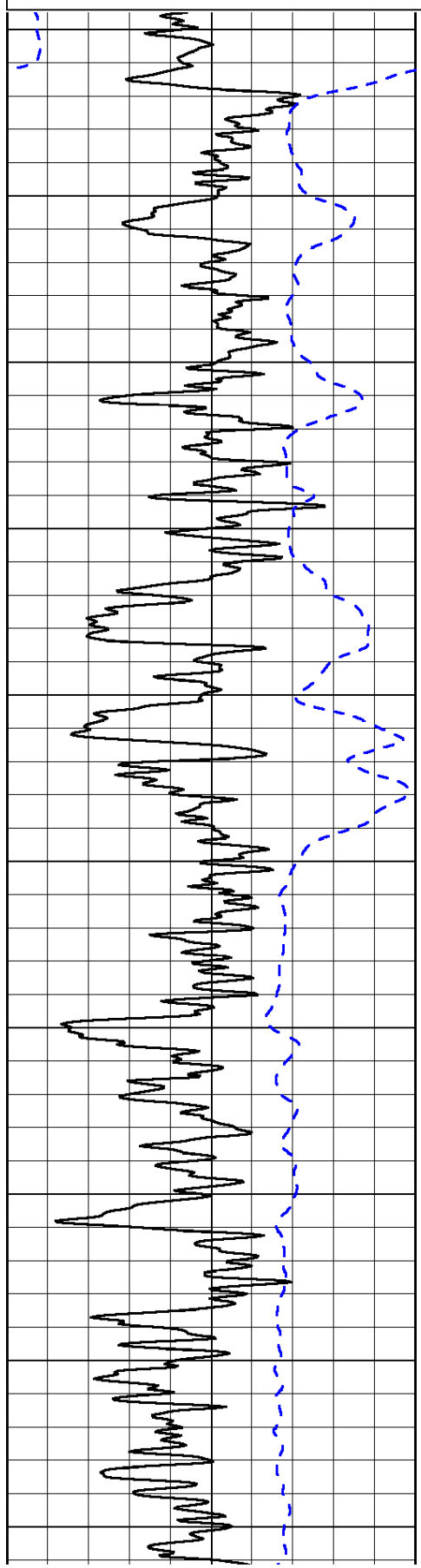
0	Gamma Ray	150
-200	SP (mV)	0

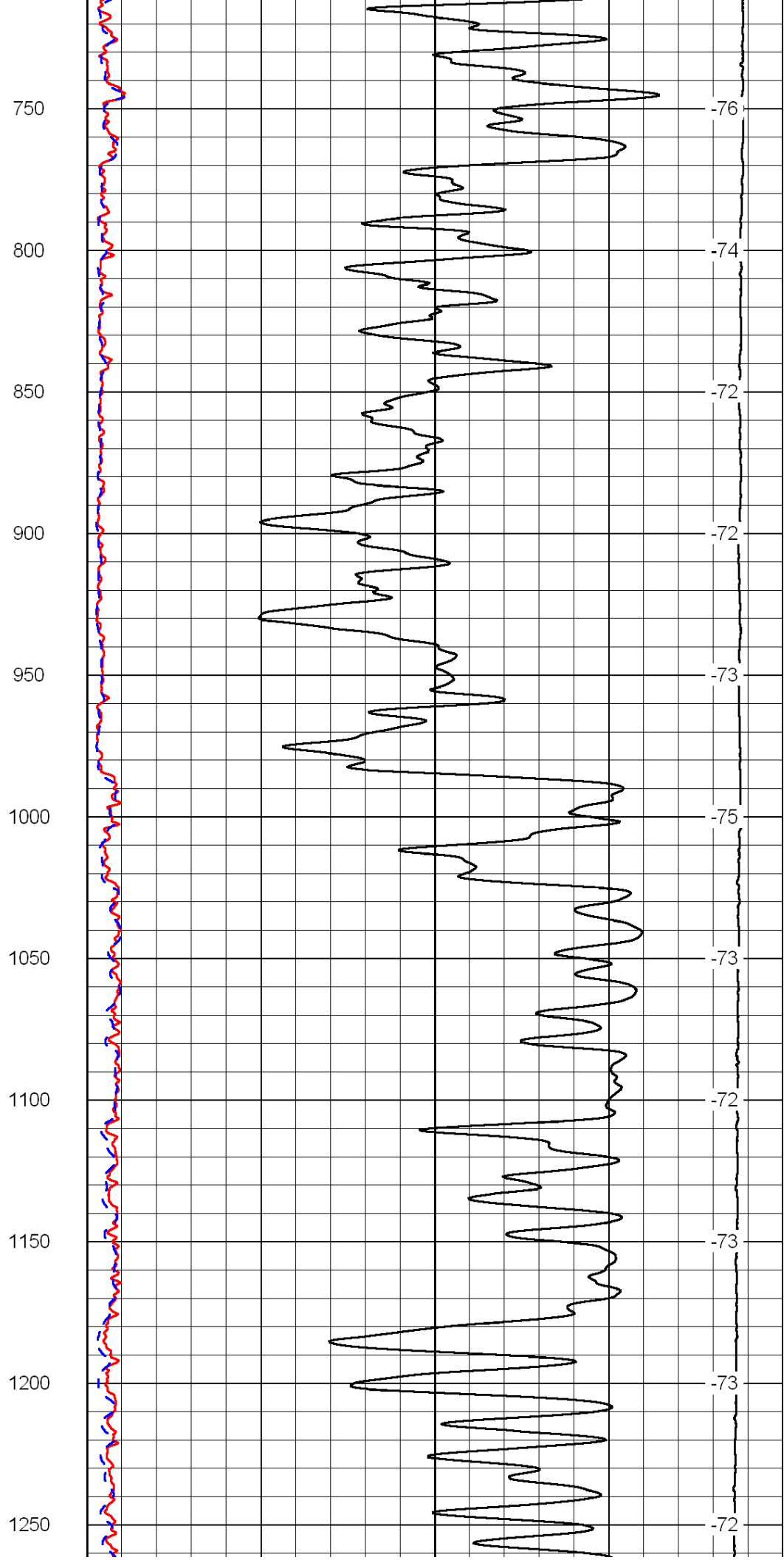
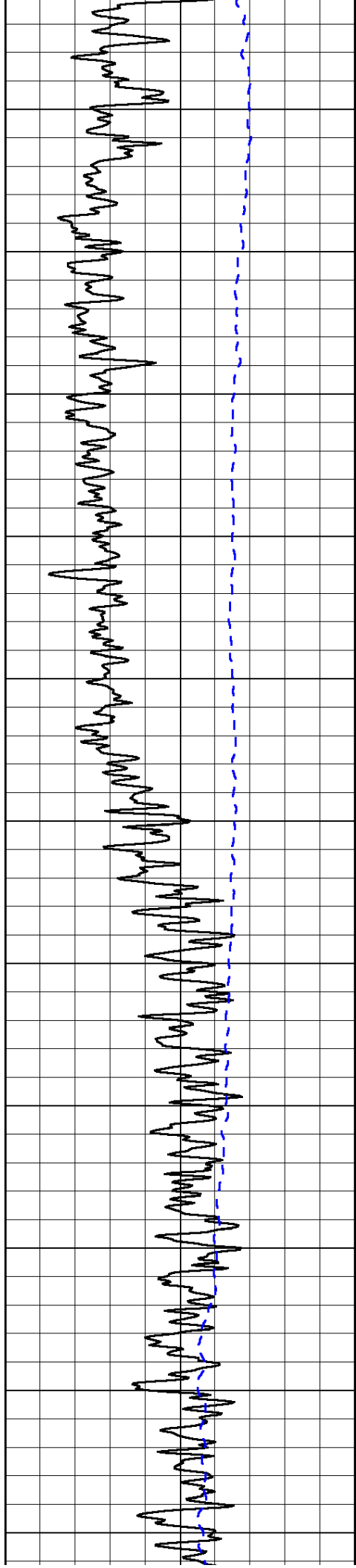
0	Shallow Resistivity	50
0	Deep Resistivity	50

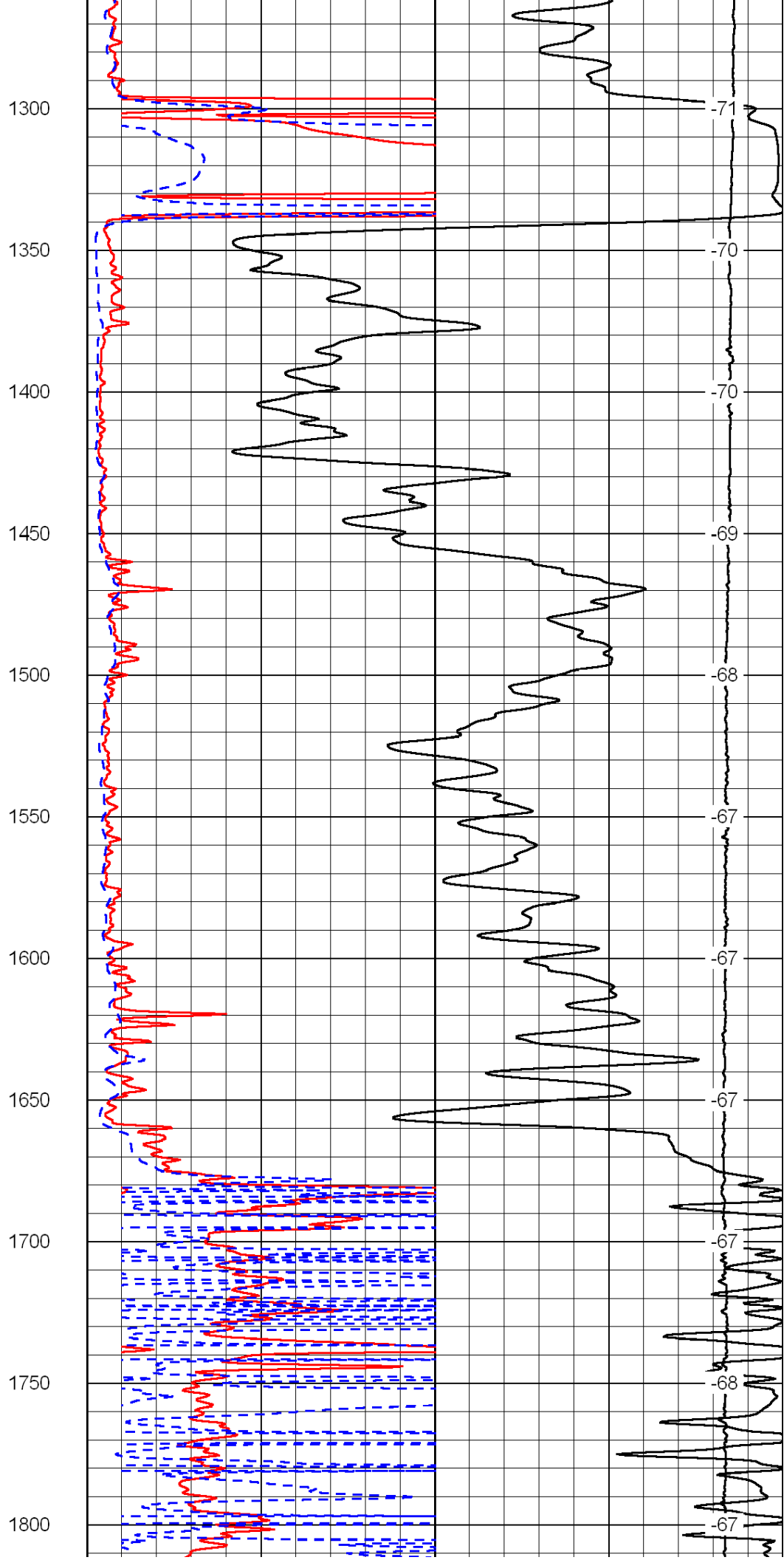
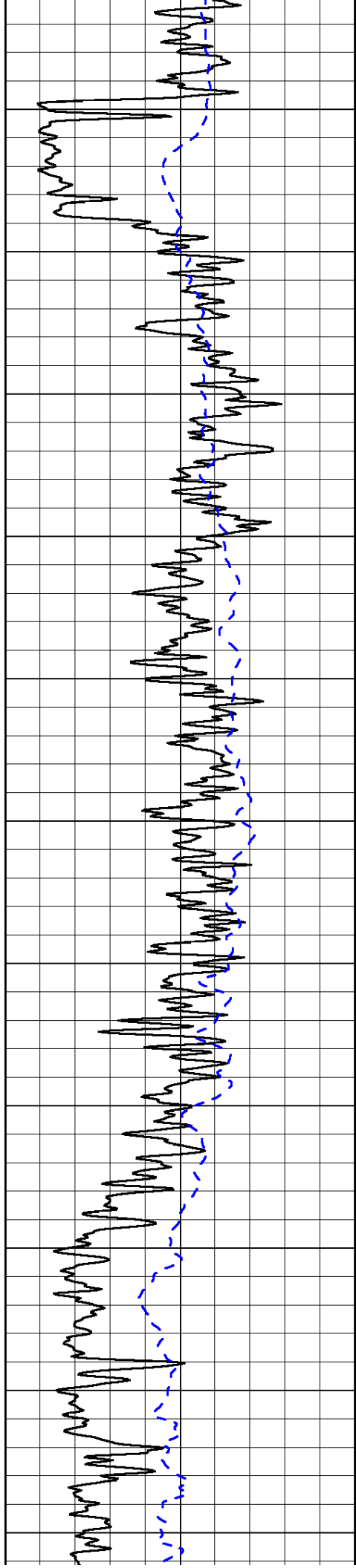
LSPD

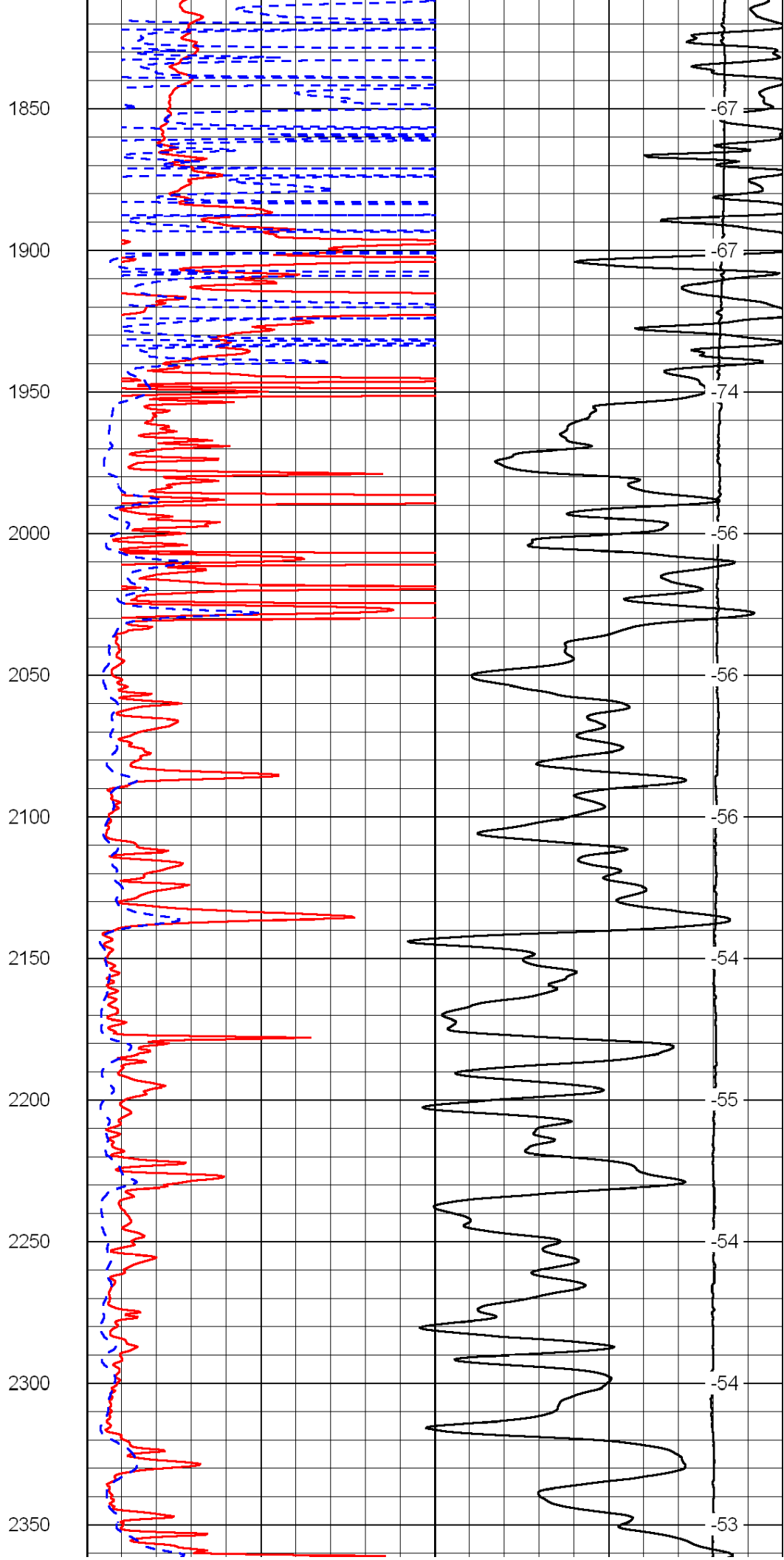
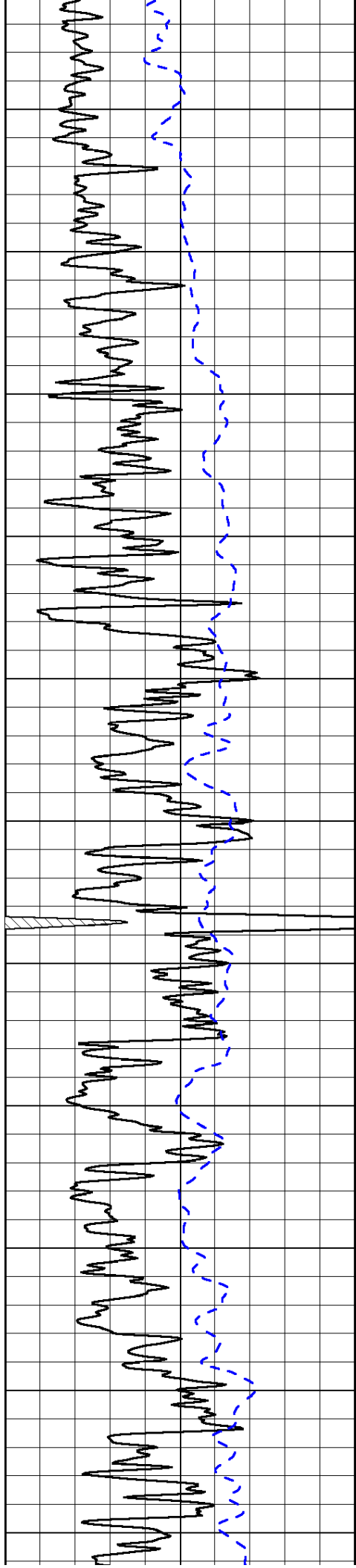
1000	Conductivity	0
15000	Line Tension	0

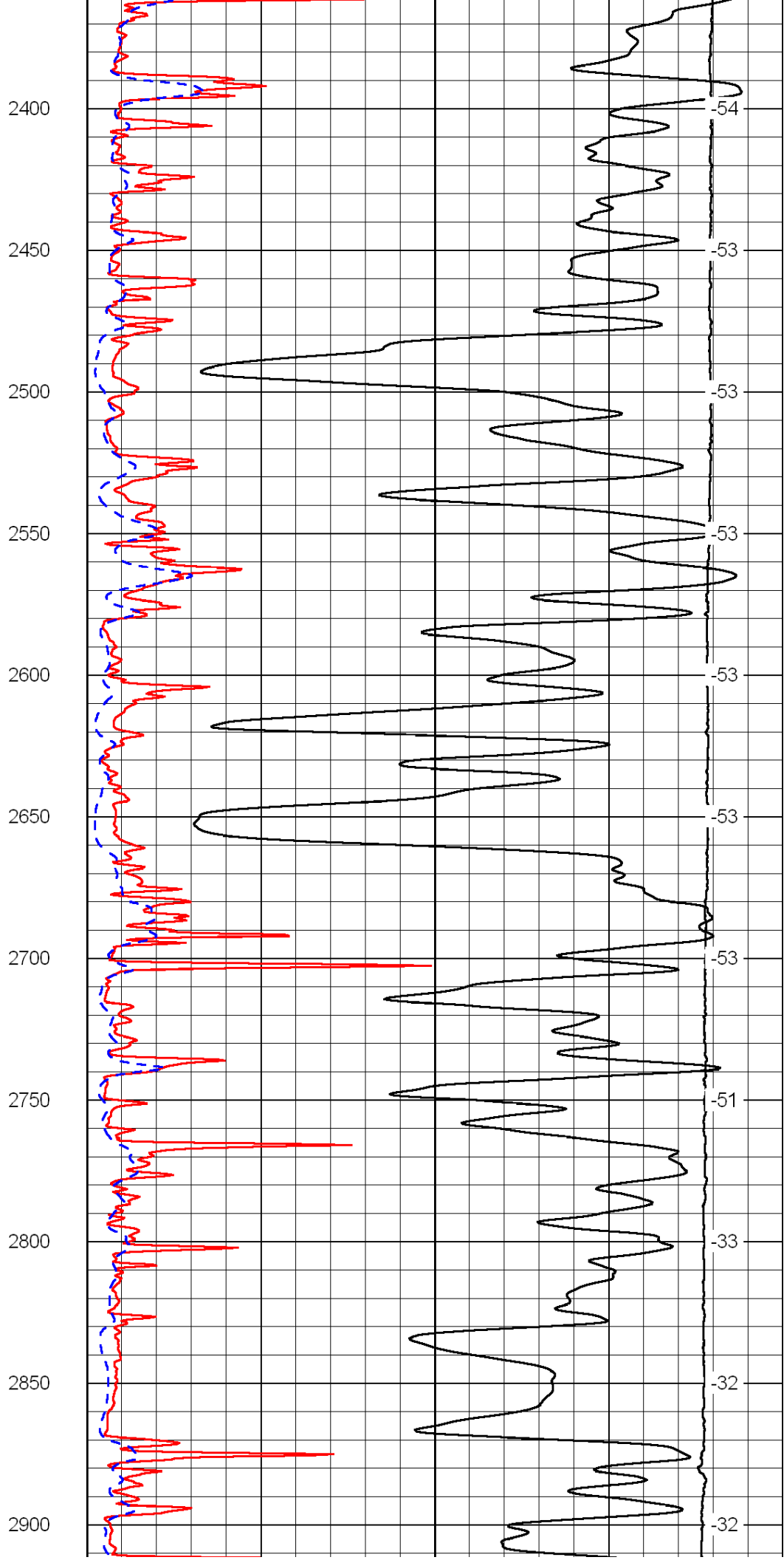
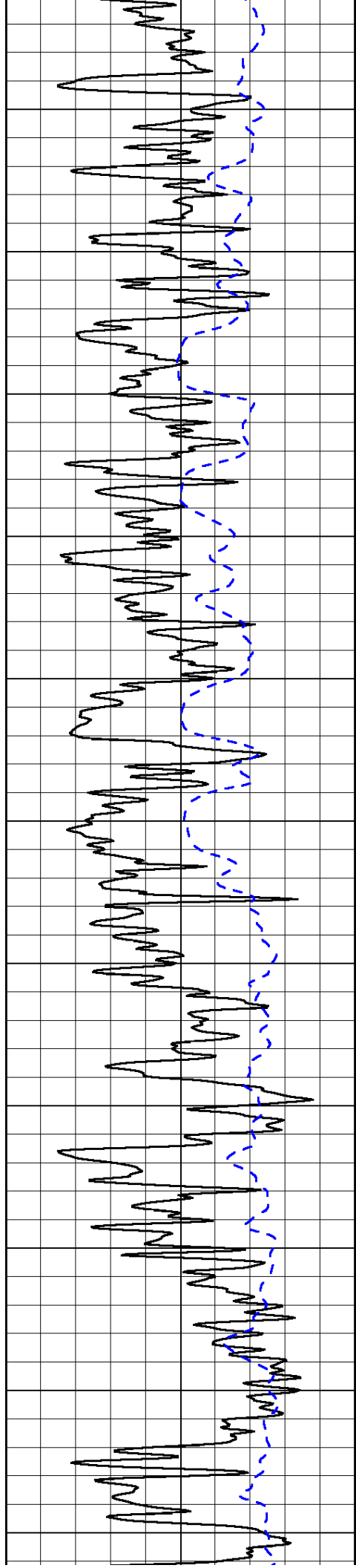
50	Shallow Resistivity	500
50	Deep Resistivity	500

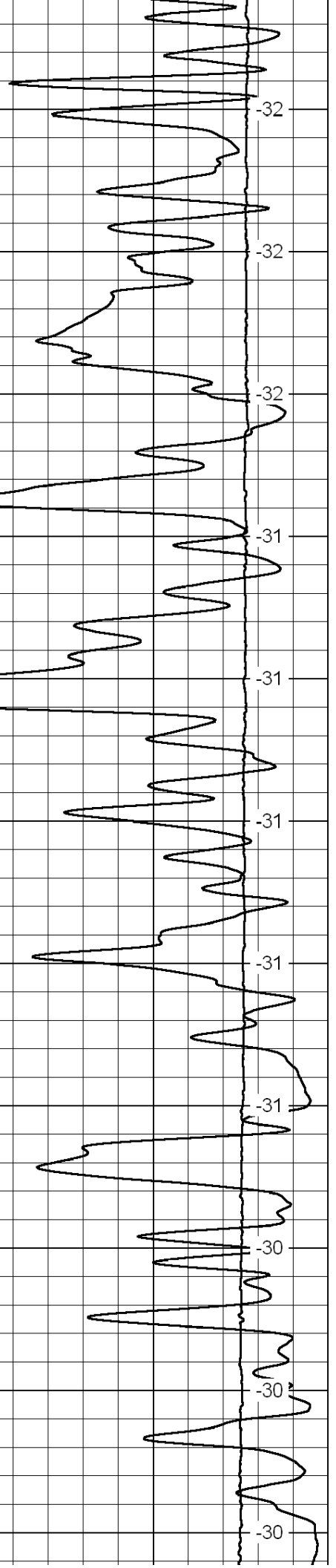
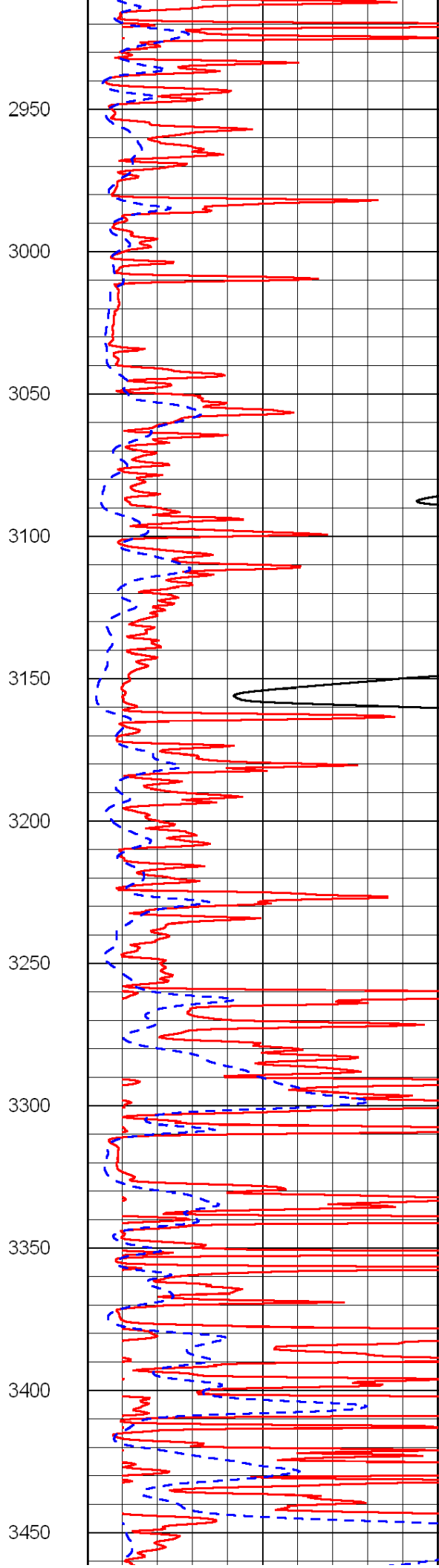
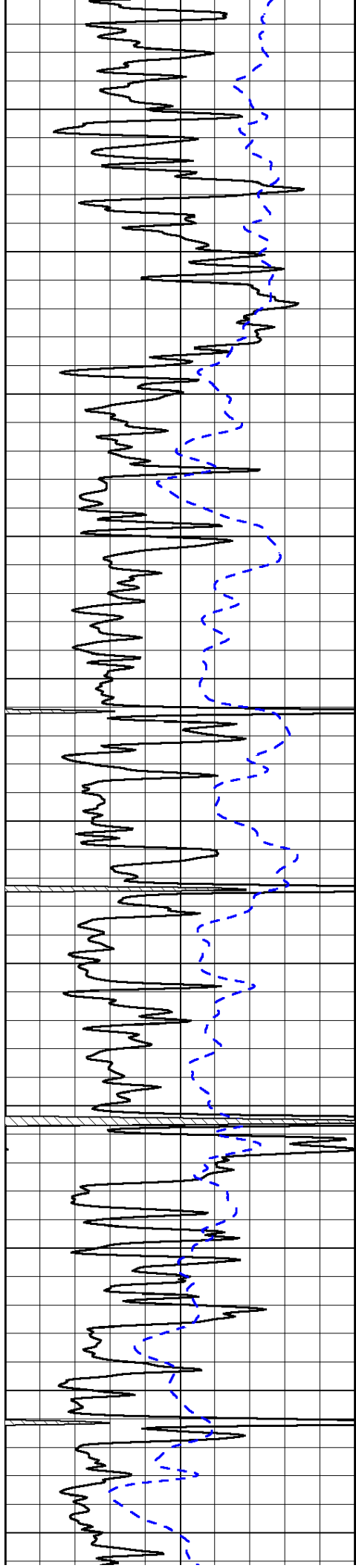


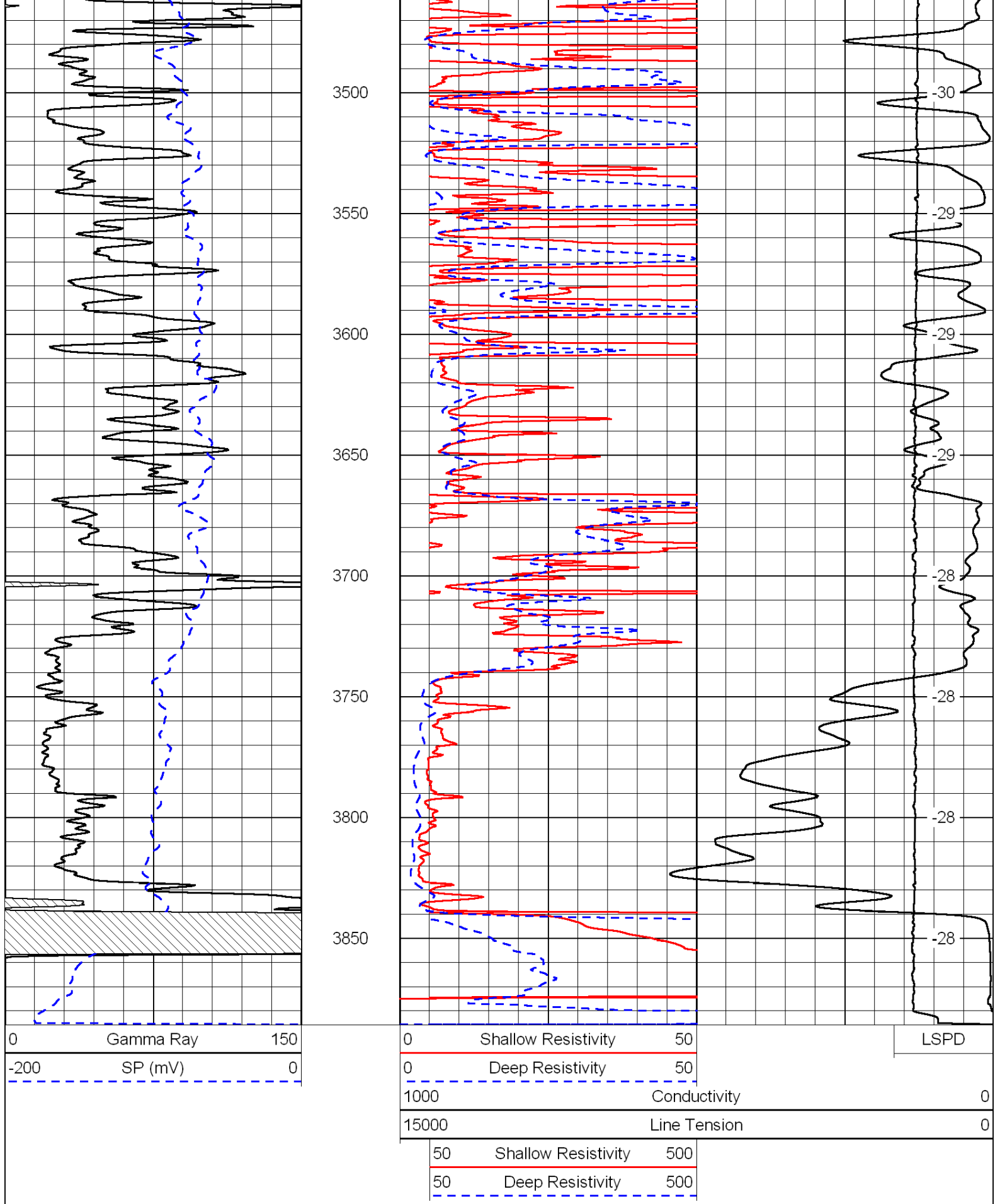












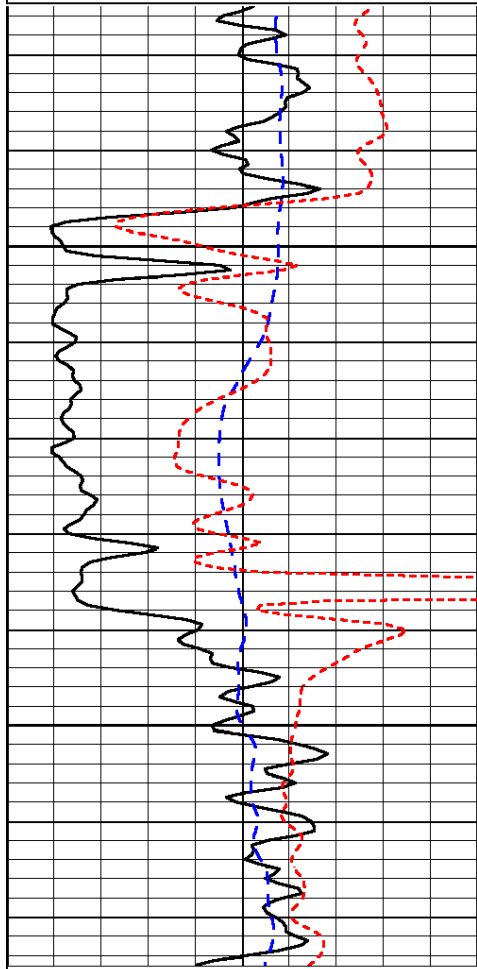
Database File: c:\warrior\data\klabzuba\_north trust #3-10-15-20\klabzuba\_northtrust3-10hd.db  
 Dataset Pathname: dil/klabstack  
 Presentation Format: dil  
 Dataset Creation: Tue Feb 21 11:31:56 2012



0	Gamma Ray	150
-200	SP (mV)	0
-160	Rxo / Rt	40

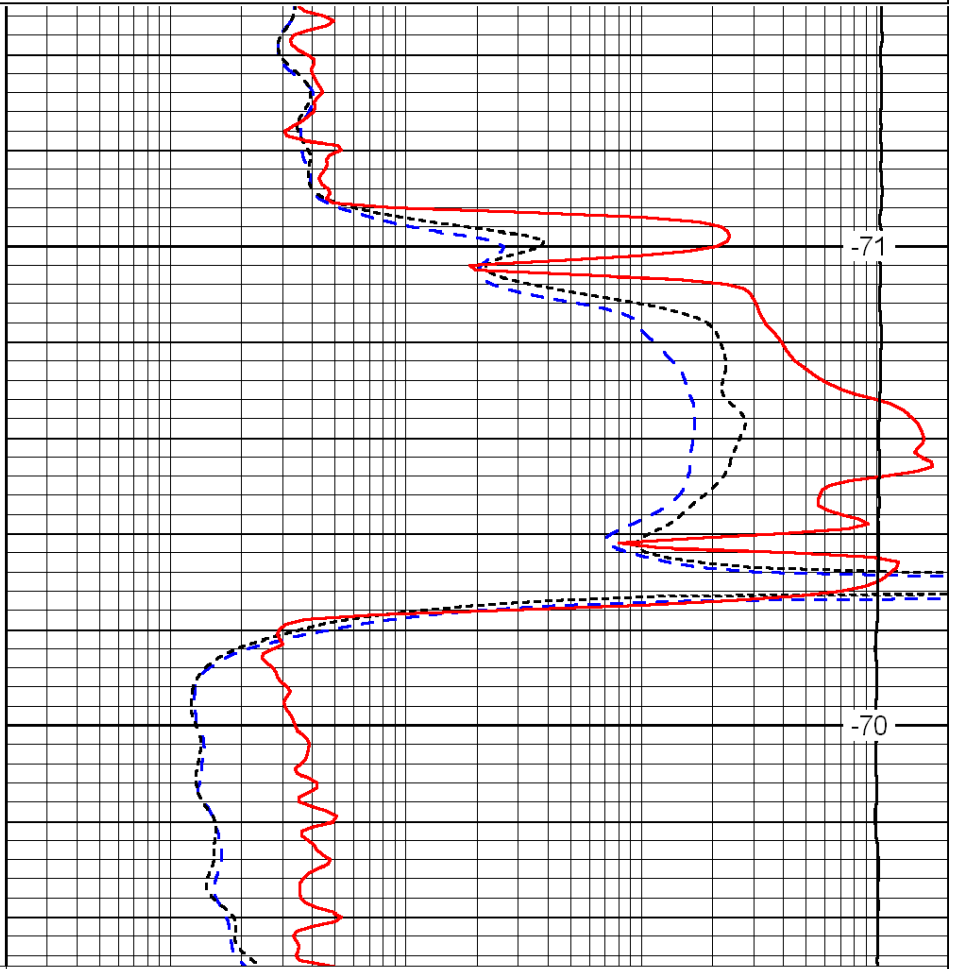
0.2	Deep Resistivity	2000
0.2	Medium Resistivity	2000
0.2	Shallow Resistivity	2000
15000	Line Tension	0

LSPD



1300

1350



-71

-70

0	Gamma Ray	150
-200	SP (mV)	0
-160	Rxo / Rt	40

0.2	Deep Resistivity	2000
0.2	Medium Resistivity	2000
0.2	Shallow Resistivity	2000
15000	Line Tension	0

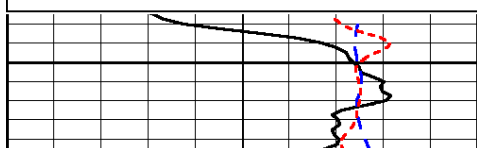
LSPD

Database File: c:\warrior\data\klabzuba\_north trust #3-10-15-20\klabzuba\_northtrust3-10hd.db  
 Dataset Pathname: dil/klabstack  
 Presentation Format: dil  
 Dataset Creation: Tue Feb 21 11:31:56 2012  
 Charted by: Depth in Feet scaled 1:240

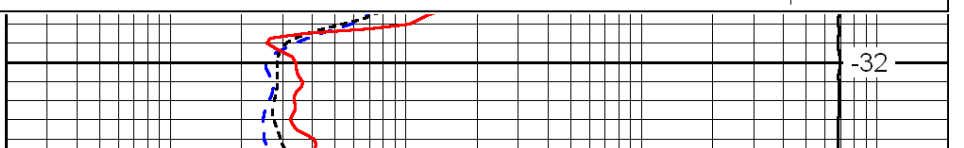
0	Gamma Ray	150
-200	SP (mV)	0
-160	Rxo / Rt	40

0.2	Deep Resistivity	2000
0.2	Medium Resistivity	2000
0.2	Shallow Resistivity	2000
15000	Line Tension	0

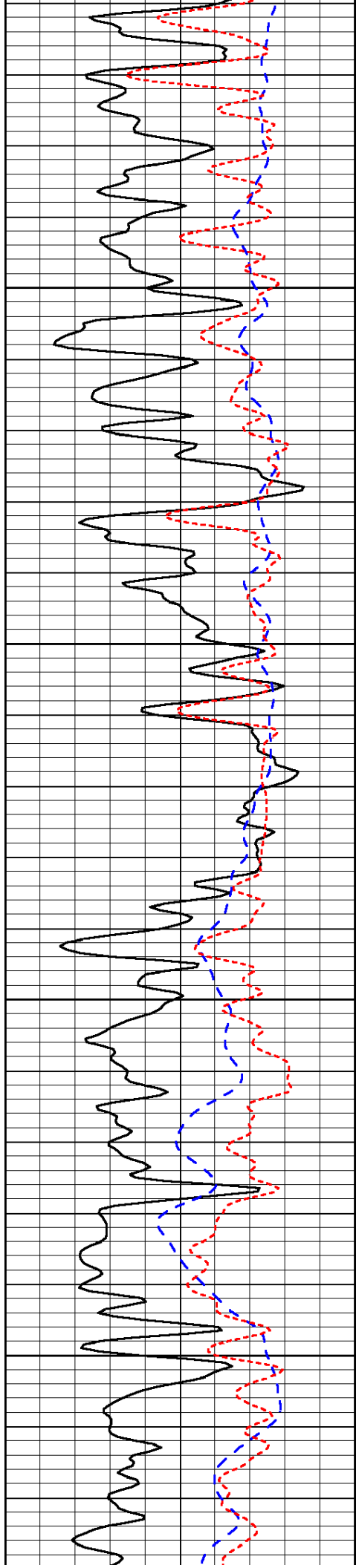
LSPD



2900



-32

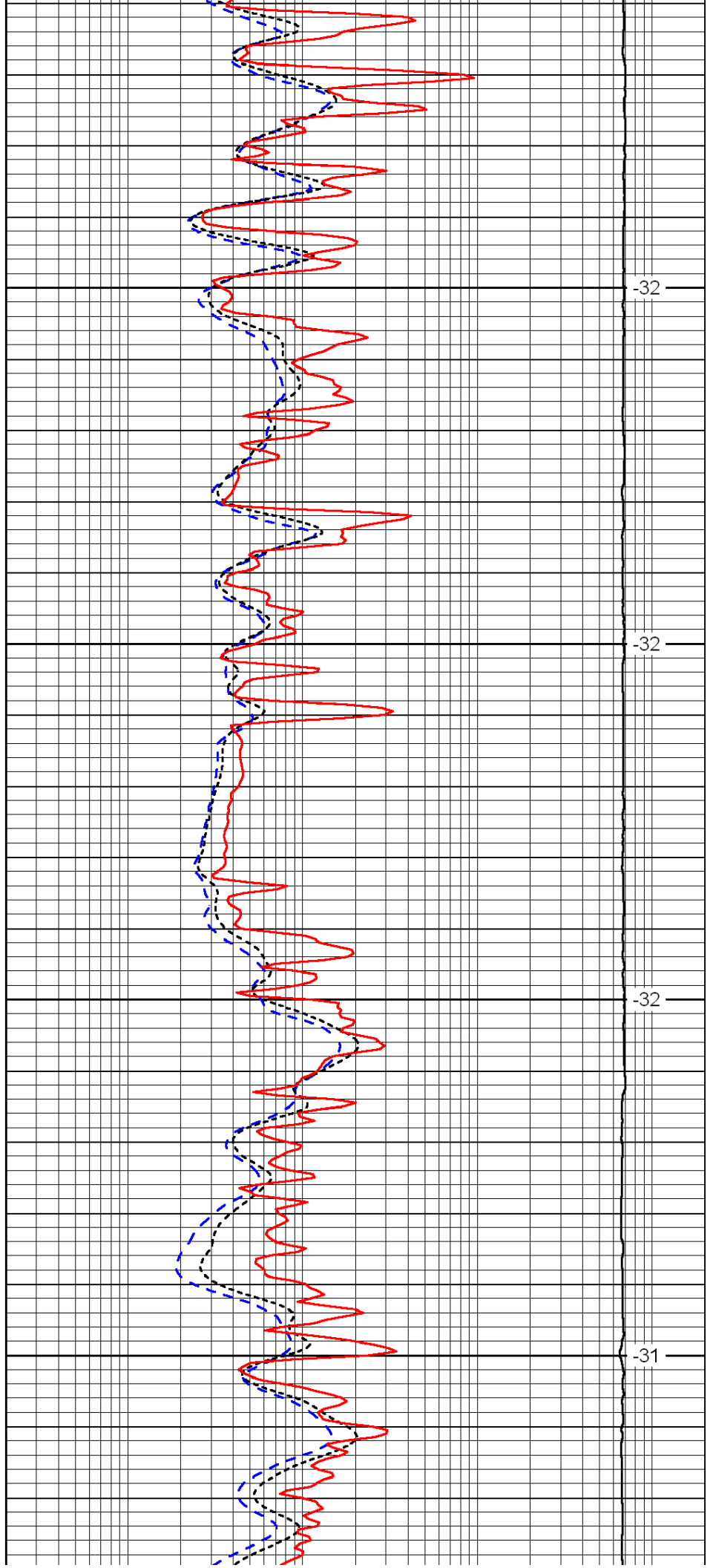


2950

3000

3050

3100

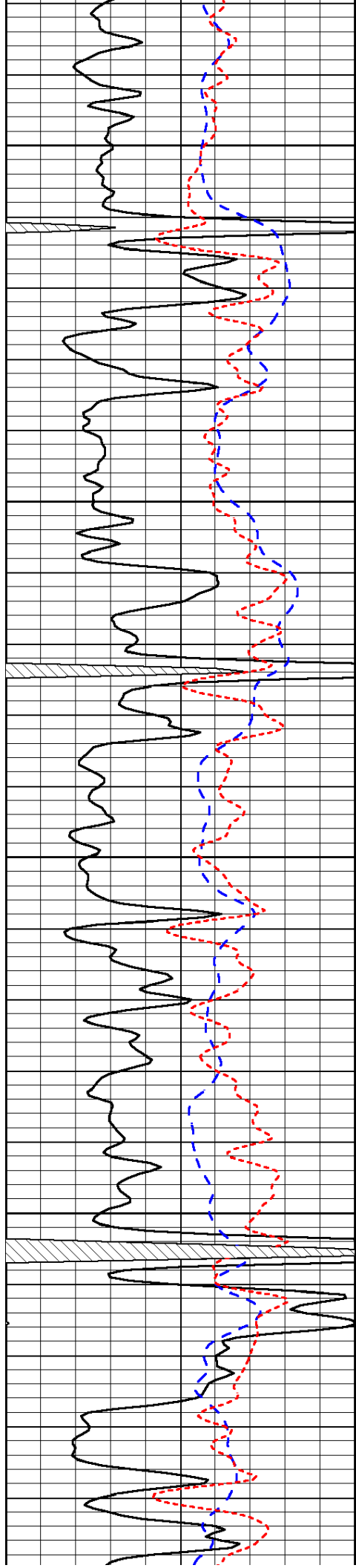


-32

-32

-32

-31



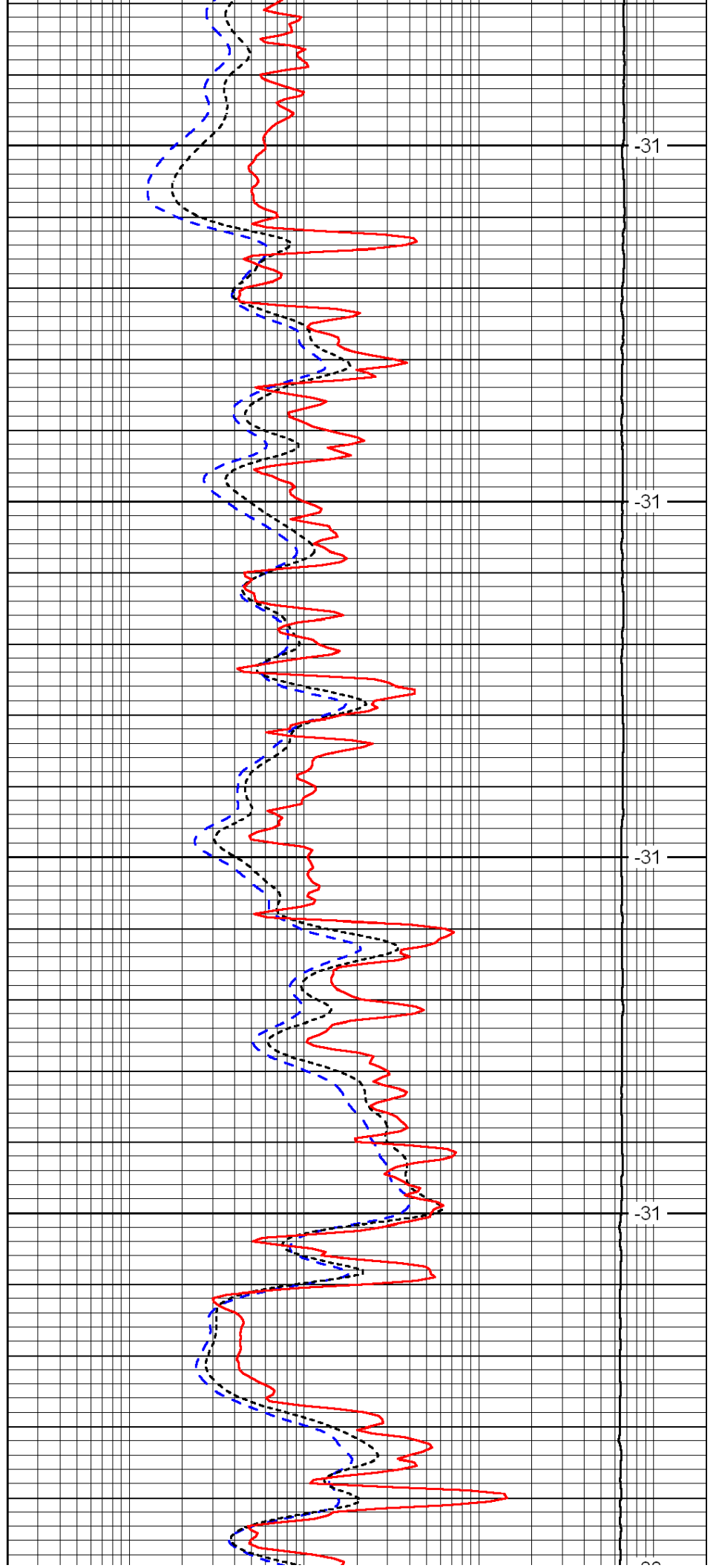
3150

3200

3250

3300

3350



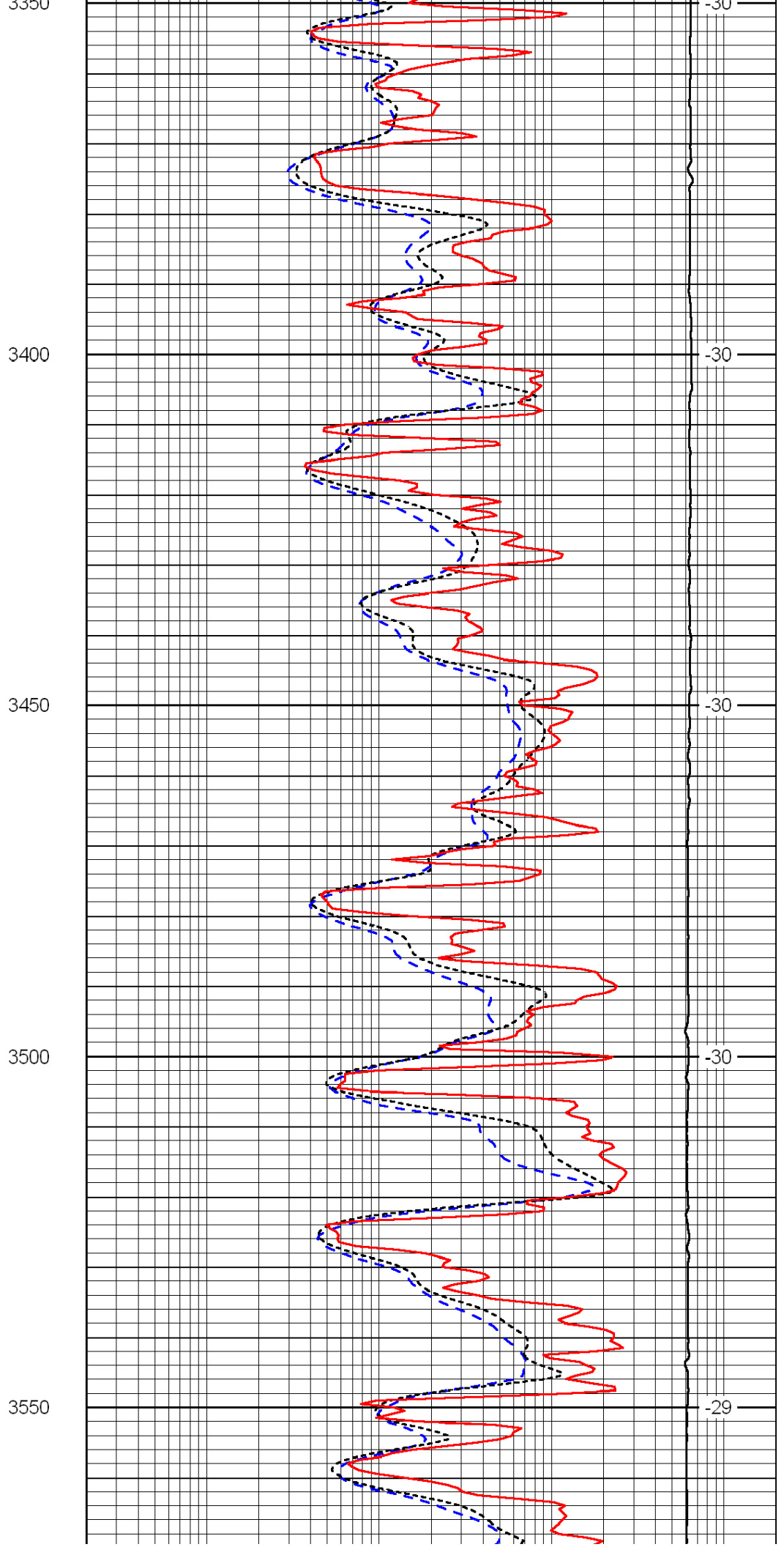
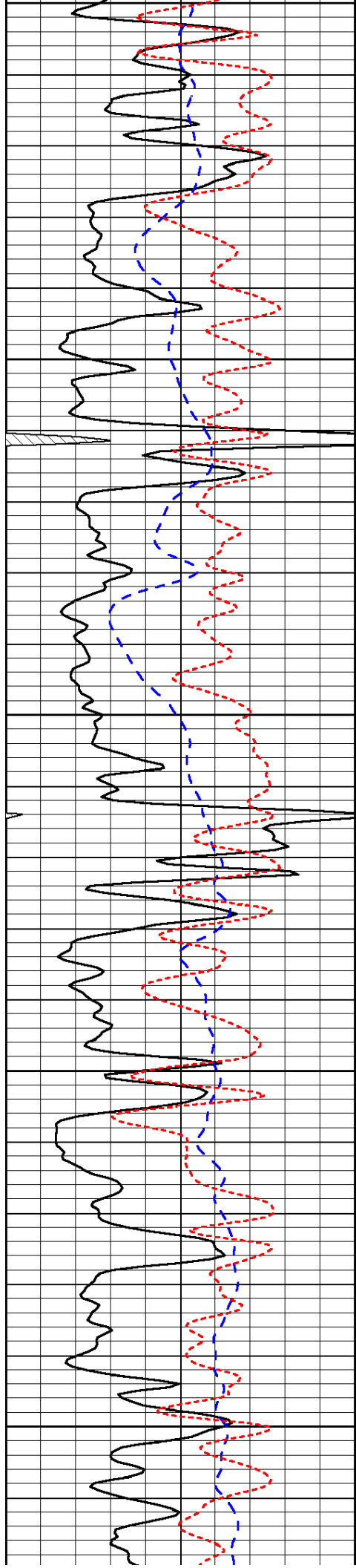
-31

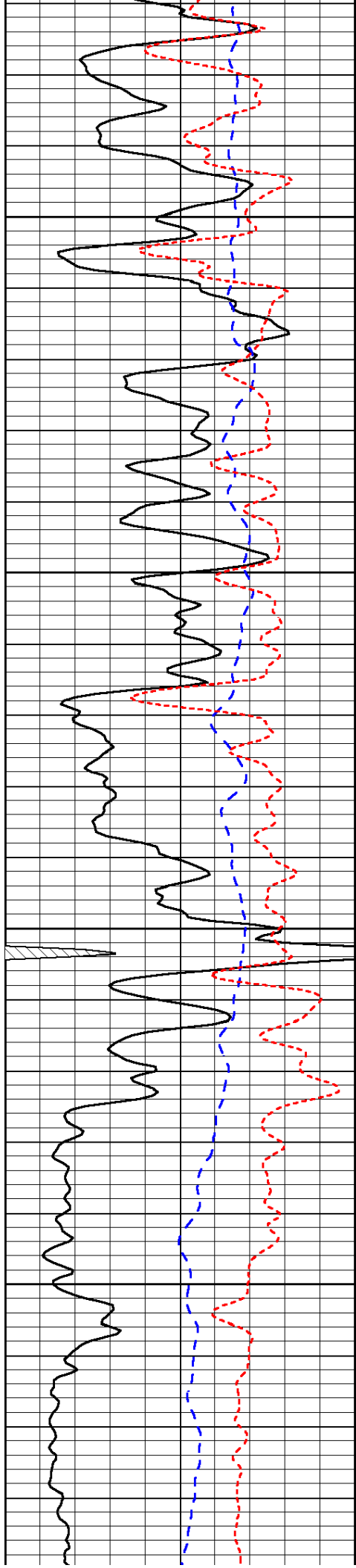
-31

-31

-31

-31



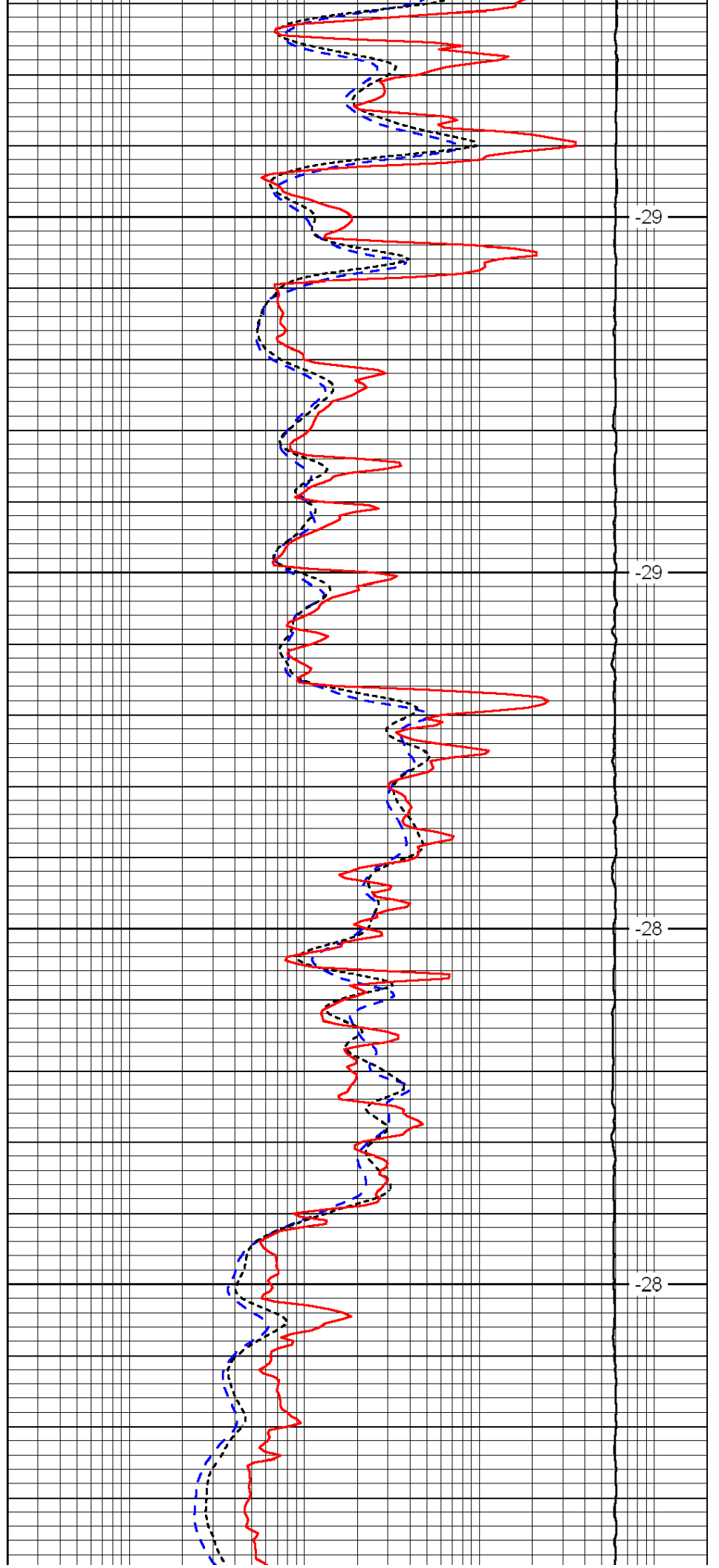


3600

3650

3700

3750

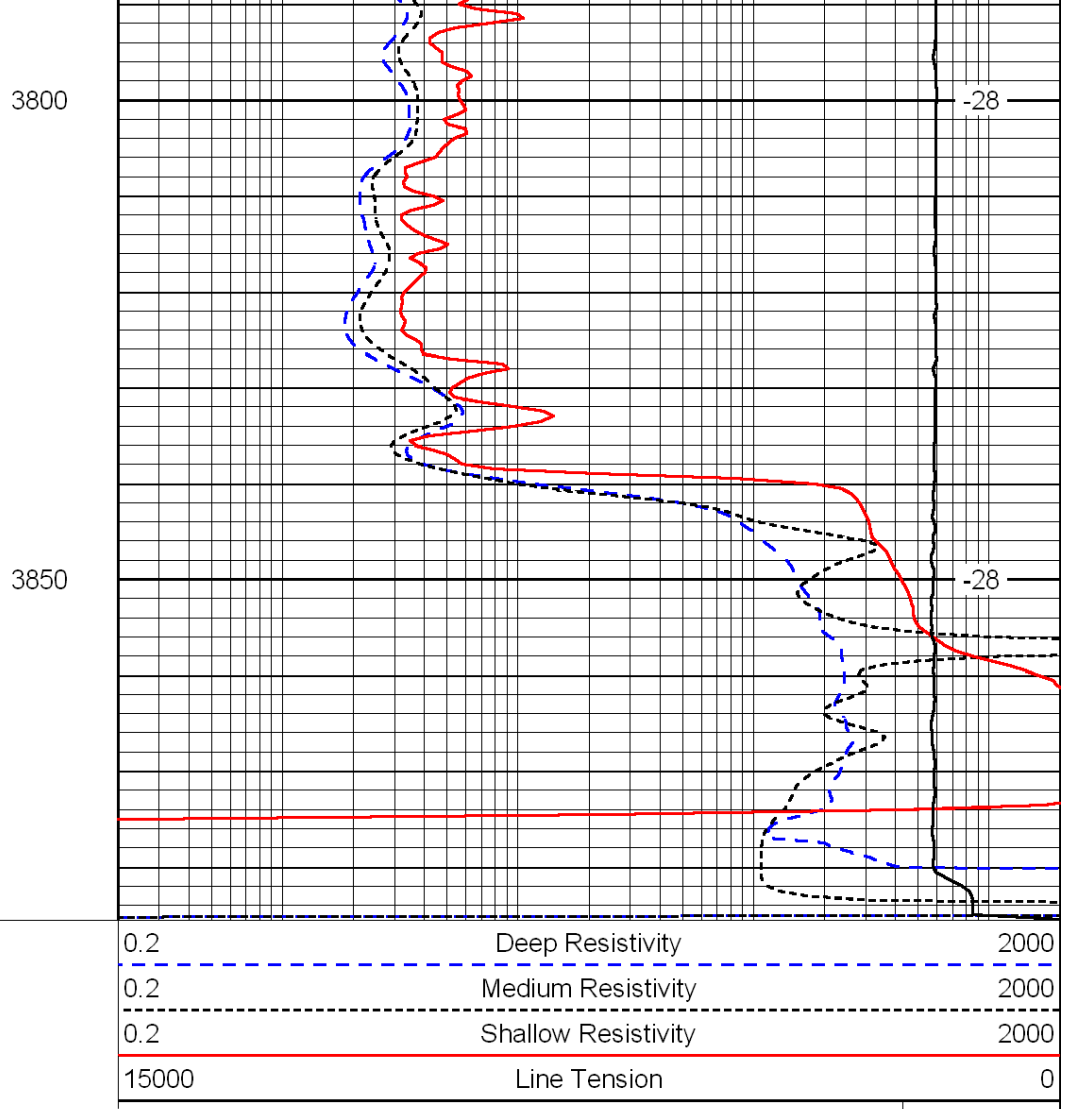
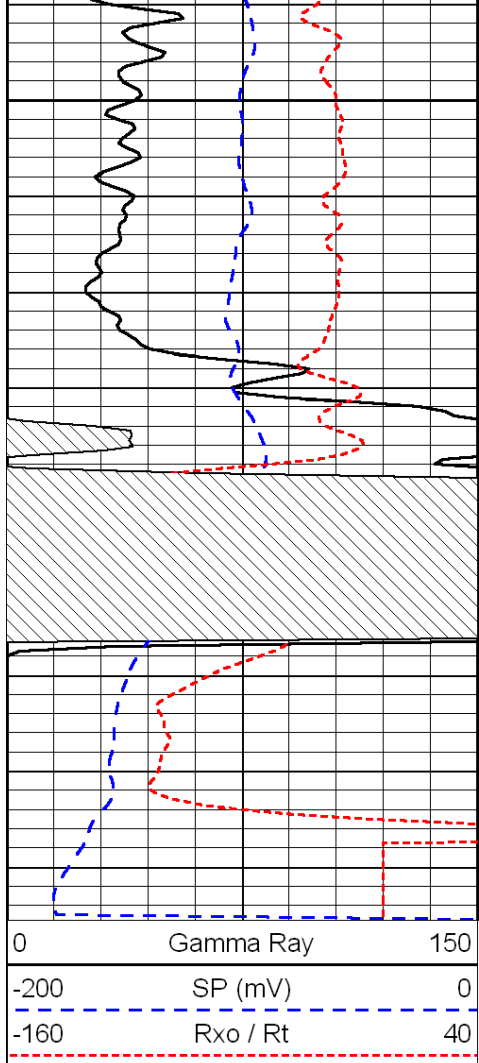


-29

-29

-28

-28



LSPD