



DIGITAL LOG (785) 625-3858

Borehole Compensated
Sonic Log

15-051-26,259-00-00

API No.

Company Klabzuba Oil & Gas, Inc.
Well North Trust #3-10-15-20
Field N/A
County Eliis State Kansas

Location SE SW NW SE
1430' FSL & 2170' FEL

Sec: 3 Twp: 15S Rge: 20W

Other Services
CNL/CDL
MEL/DIL

Permanent Datum Ground Level Elevation 2040
Log Measured From Kelly Bushing 8 Ft. Above Perm. Datum
Drilling Measured From Kelly Bushing

Elevation
K.B. 2048
D.F. 2040
G.L. 2040

Date	2/21/2012	
Run Number	Two	
Type Log	BHC Sonic	
Depth Driller	3883	
Depth Logger	3880	
Bottom Logged Interval	3869	
Top Logged Interval	250	
Type Fluid In Hole	Chemical	
Salinity, PPM CL	5000	
Density	9.1	
Level	Full	
Max. Rec. Temp. F	117	
Operating Rig Time	5 Hours	
Equipment -- Location	91 Hays	
Recorded By	D. Schmidt	
Witnessed By	Dave Goldak	

Borehole Record

Run No.	Bit	From	To	Size	Wgt.	From	To
1	12.25	00	263	8.625	24#	00	263
2	7.875	263	3883				

Casing Record

<<< Fold Here >>>

All interpretations are opinions based on inferences from electrical or other measurements and we cannot and do not guarantee the accuracy or correctness of any interpretation, and we shall not, except in the case of gross or willful negligence on our part, be liable or responsible for any loss, costs, damages, or expenses incurred or sustained by anyone resulting from any interpretation made by any of our officers, agents or employees. These interpretations are also subject to our general terms and conditions set out in our current Price Schedule.

Comments

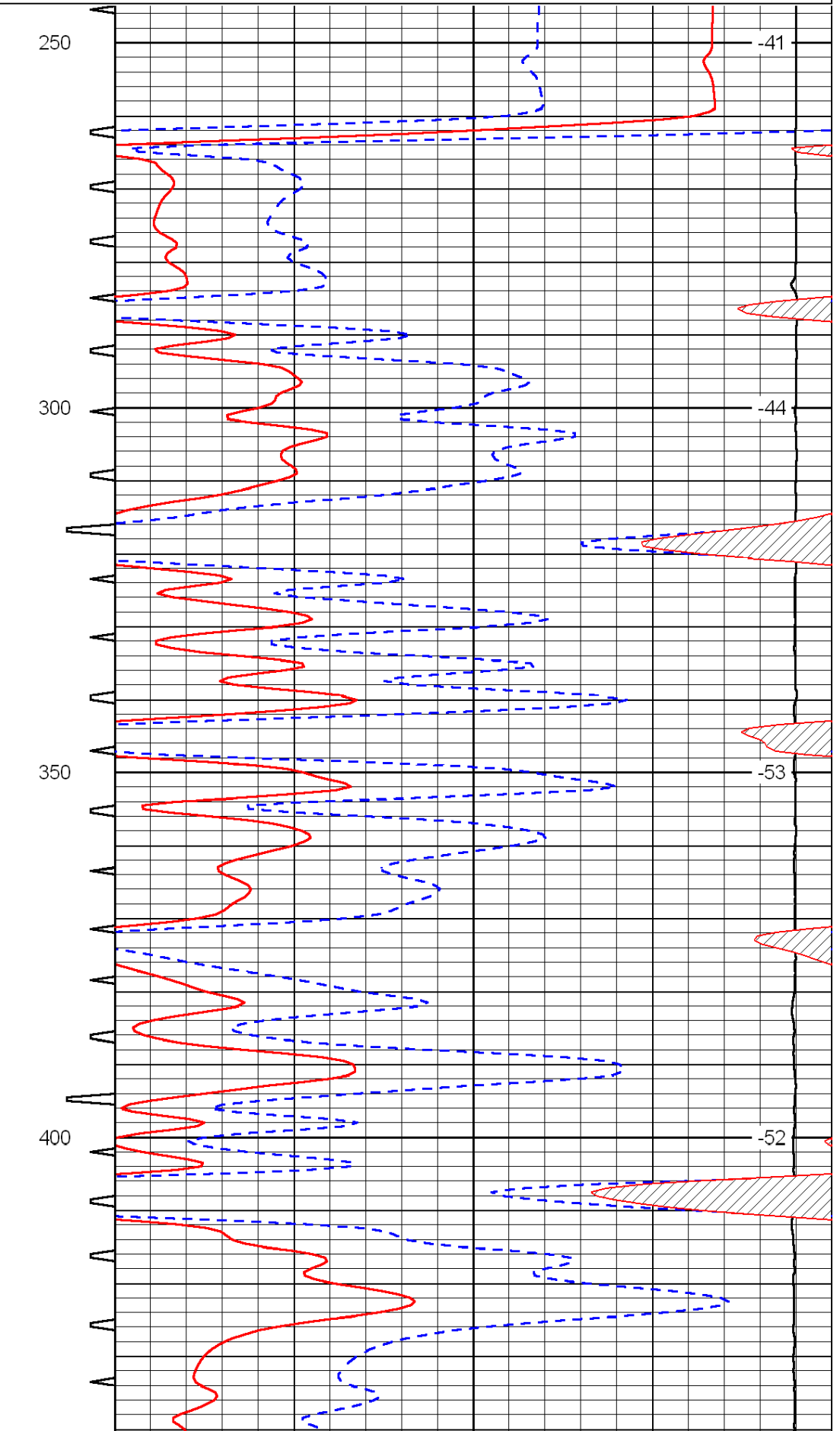
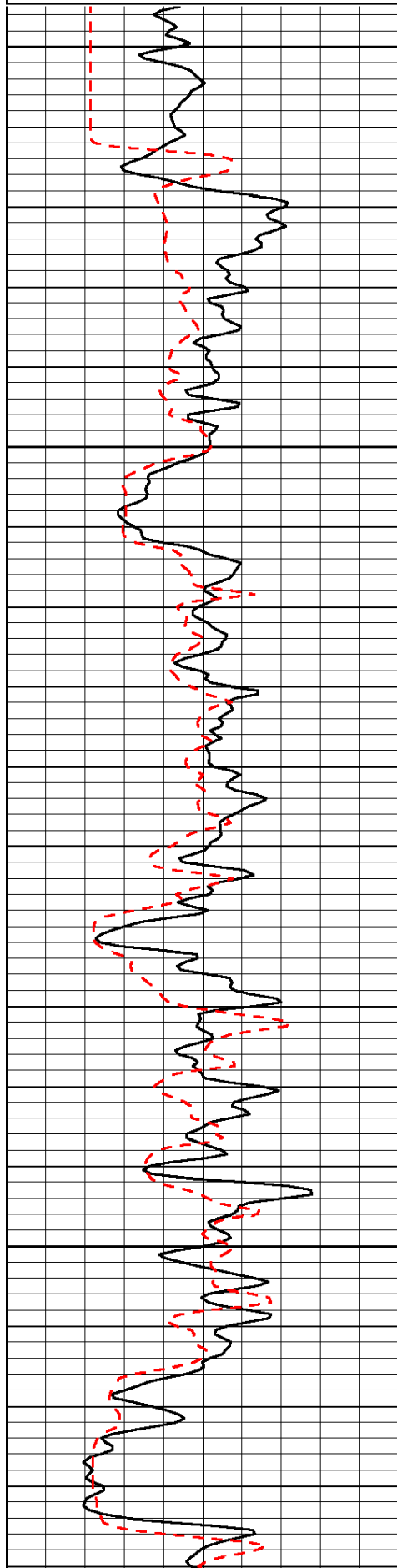
Thank you for using Log-Tech, Inc.
(785) 625-3858

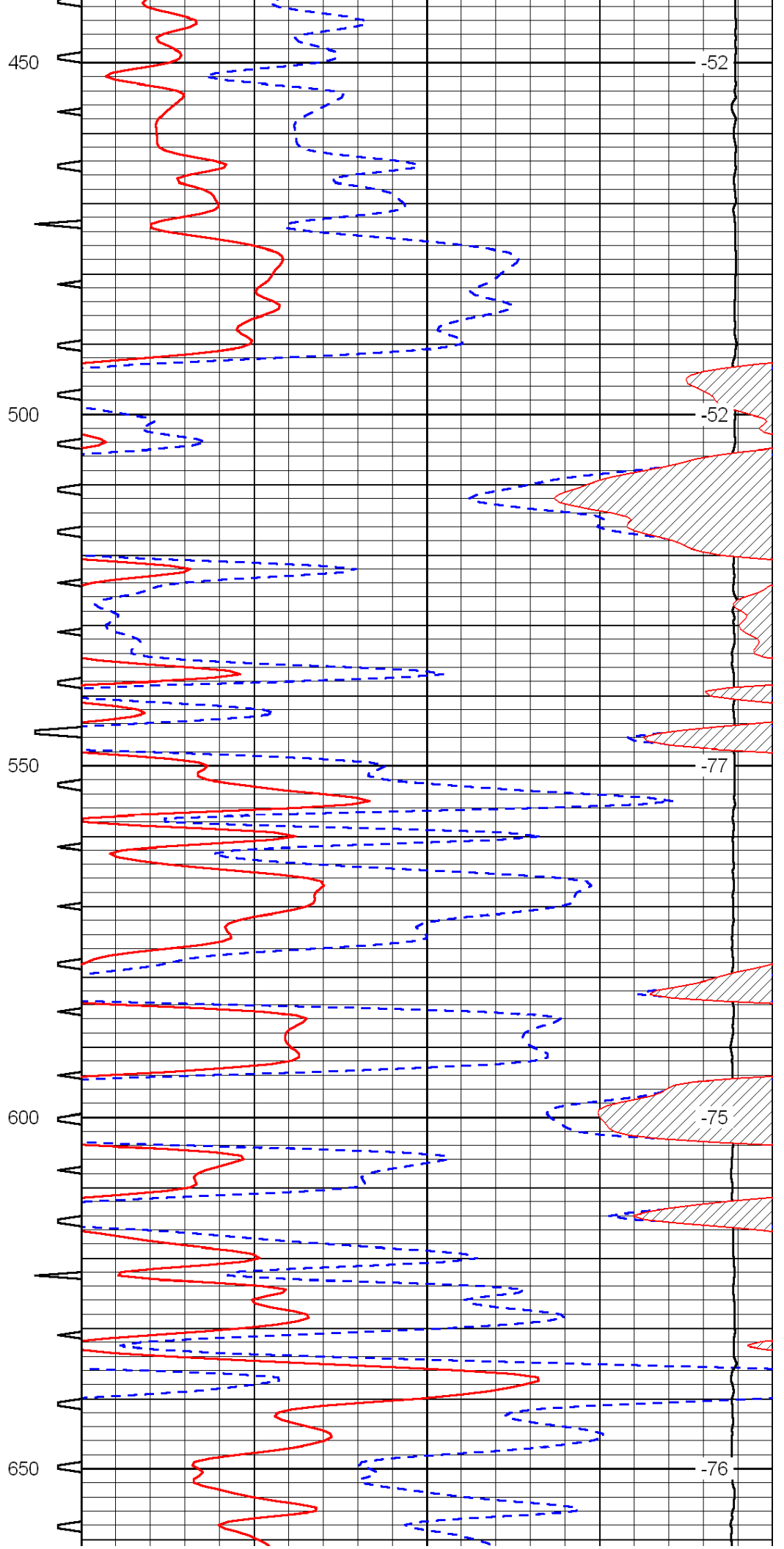
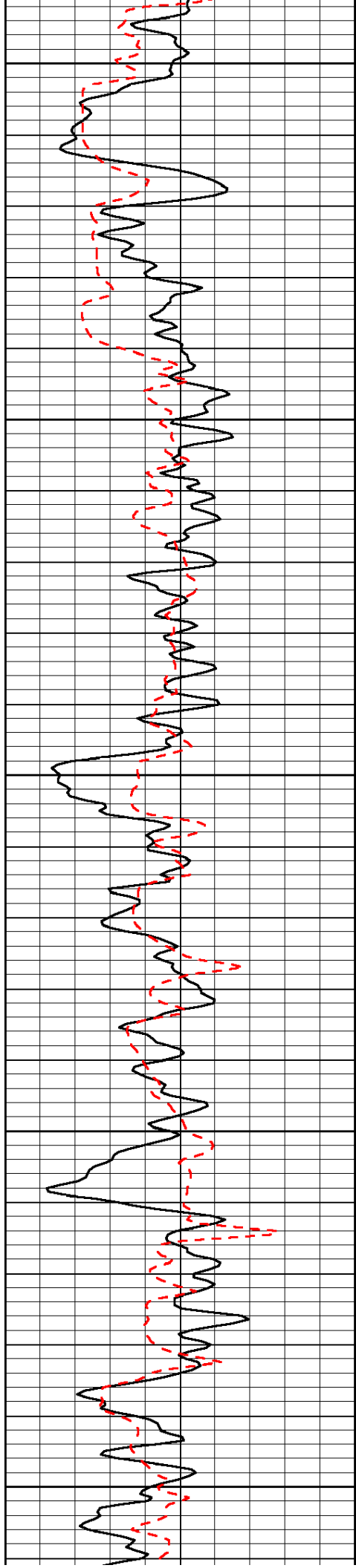
Antonino,
W to 140th, 1/2 S,
W into

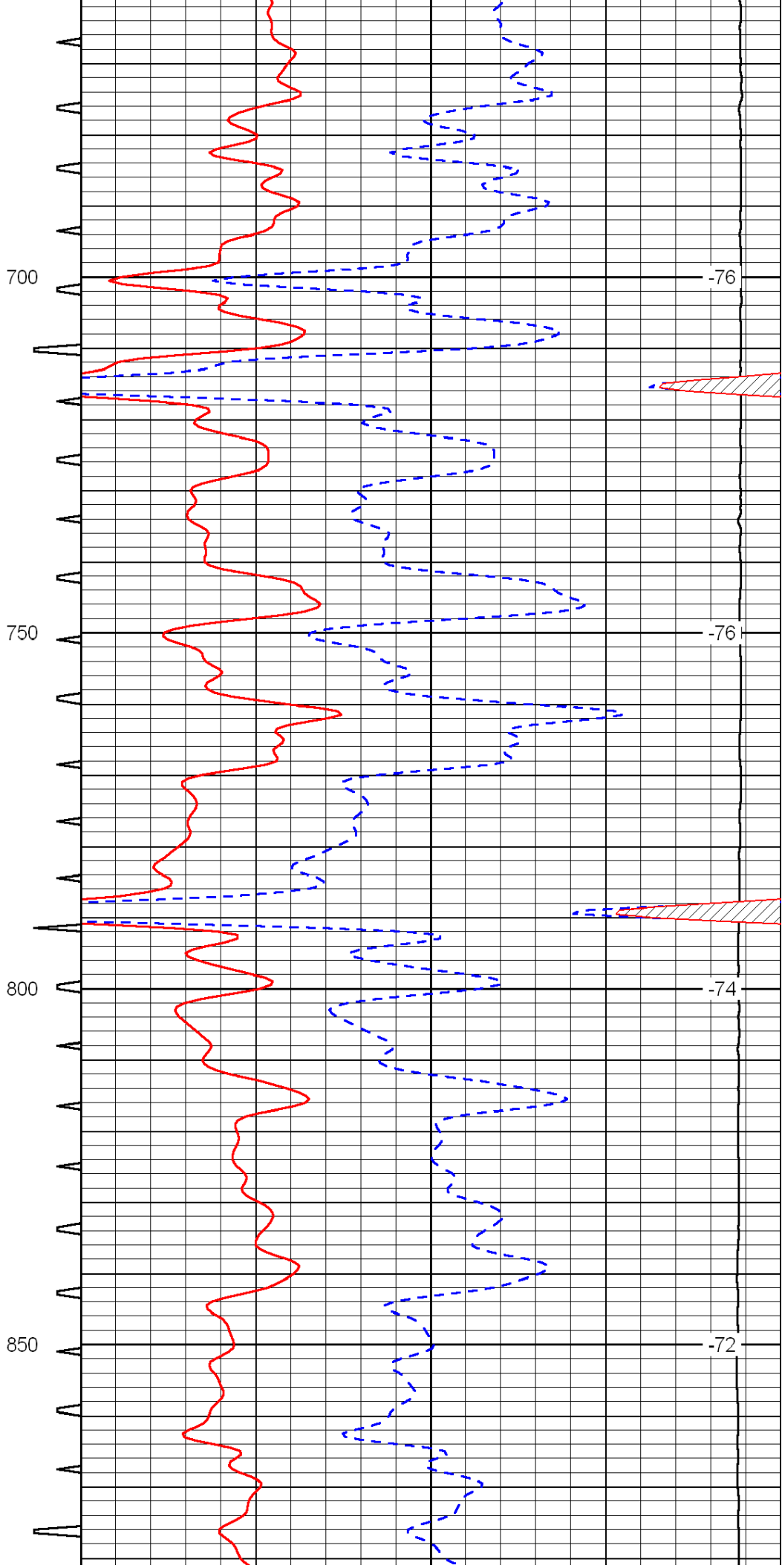
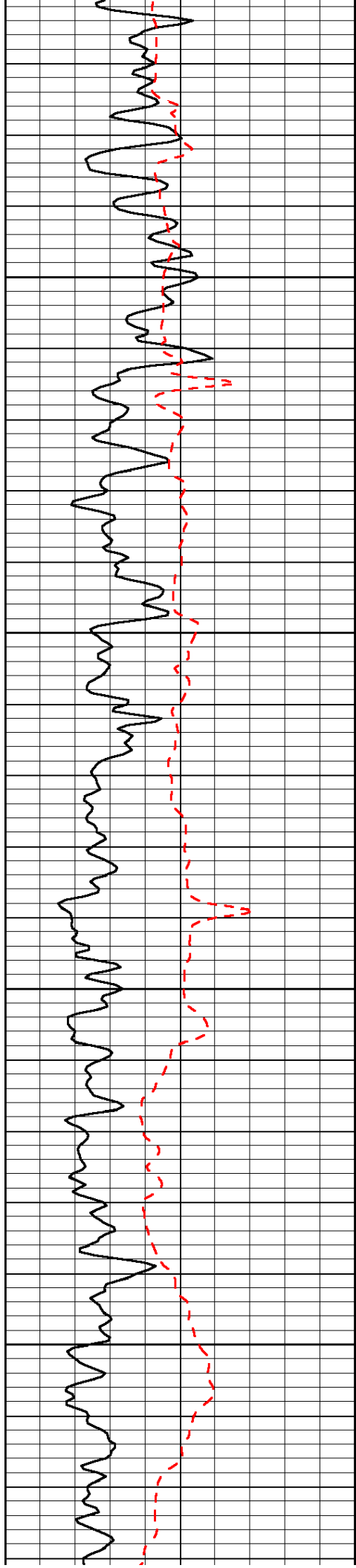
Database File: c:\warrior\data\klabzuba_north trust #3-10-15-20\klabzuba_northtrust3-10hd.db
Dataset Pathname: dil/klabstack
Presentation Format: sonic
Dataset Creation: Tue Feb 21 11:31:56 2012
Charted by: Depth in Feet scaled 1:240

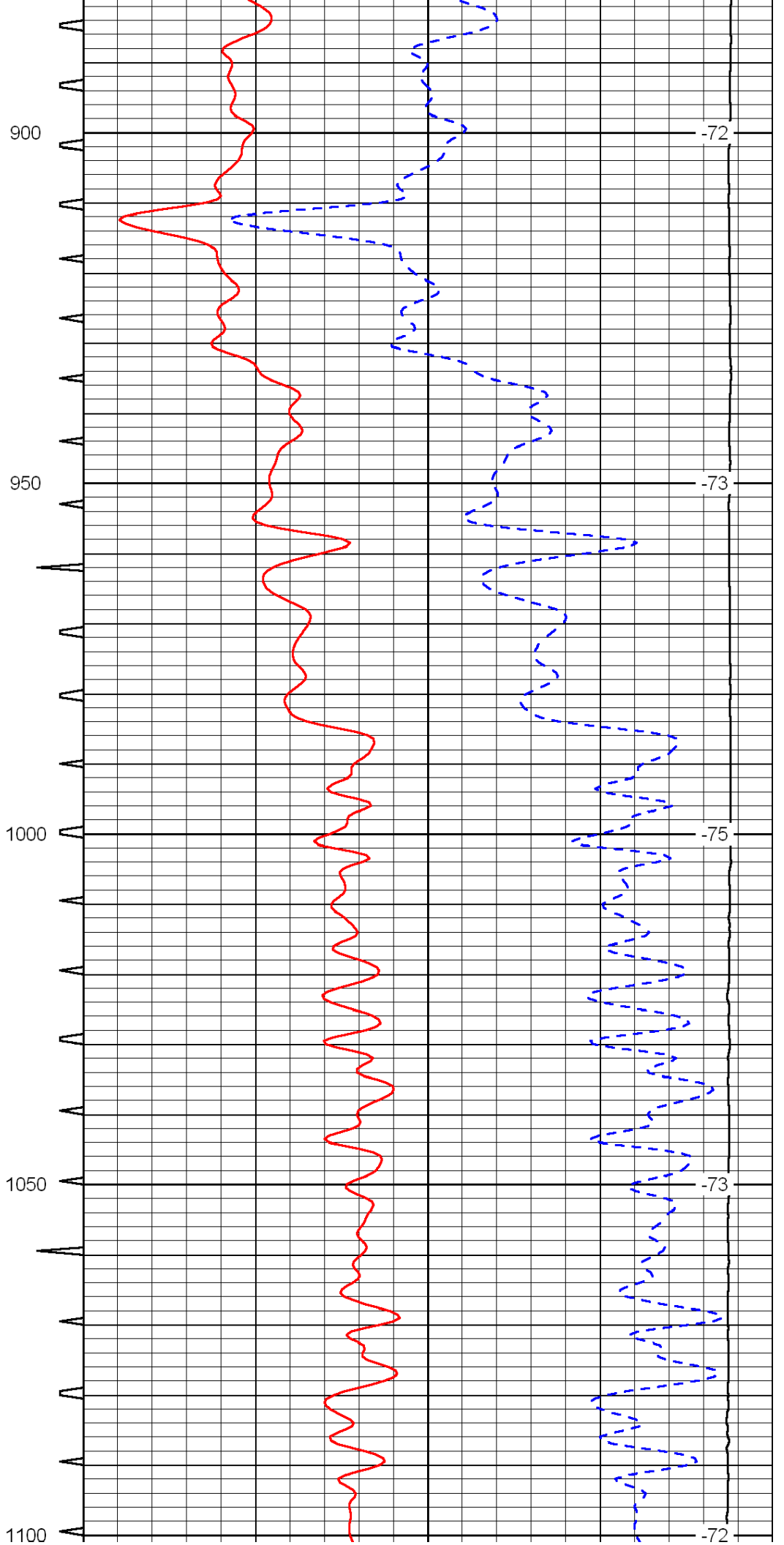
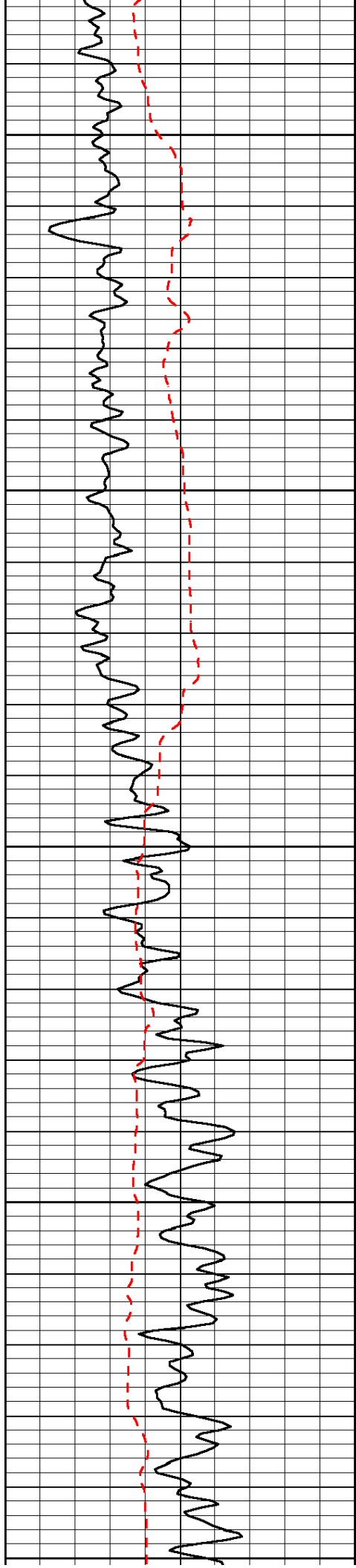
0	Gamma Ray	150	Sonic Int	140	Delta Time (usec/ft)	40
150	Gamma Ray	300	5	0	SPOR	-10
6	Caliper (GAPI)	16		15000	LTEN (lb)	0

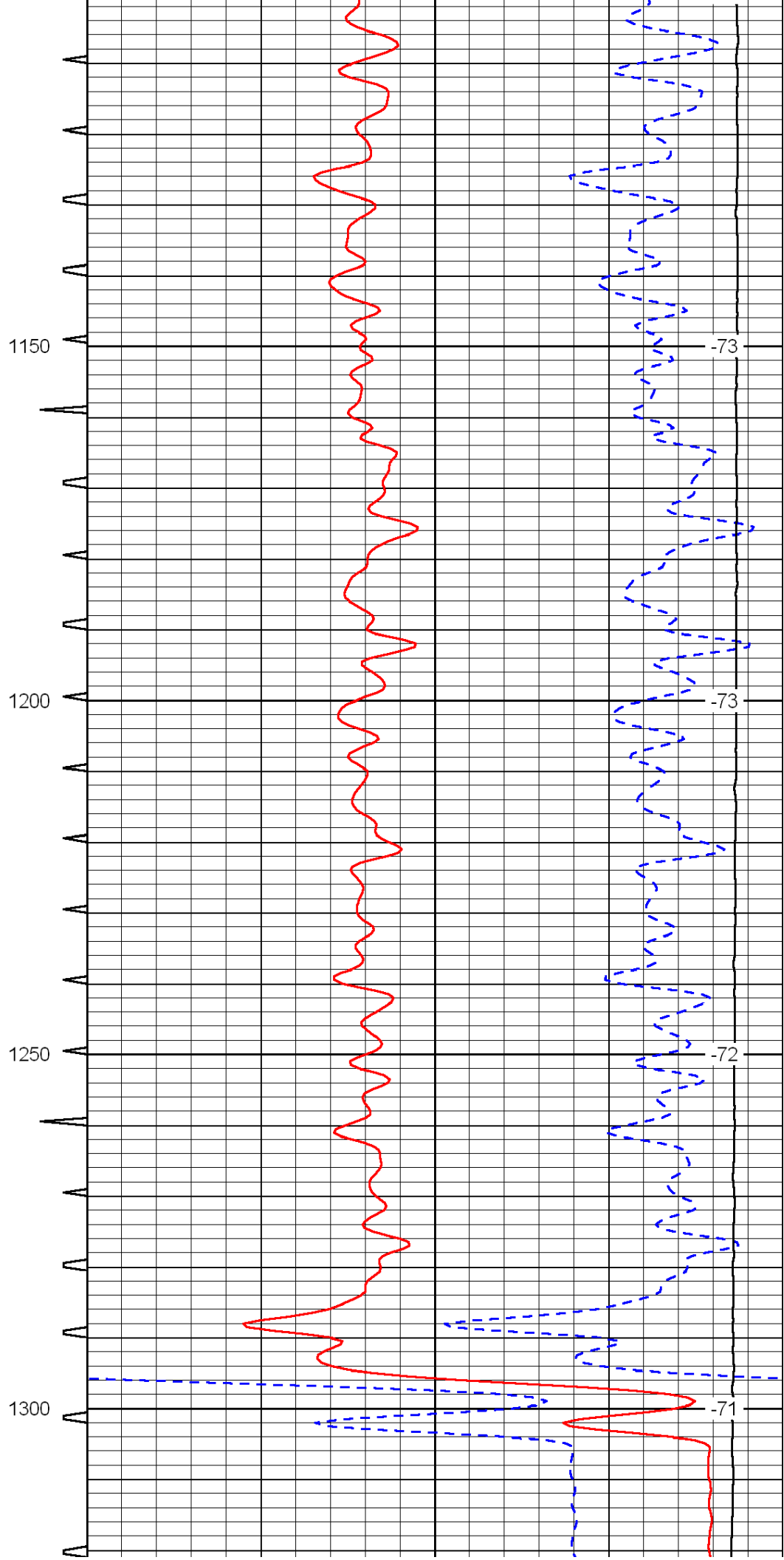
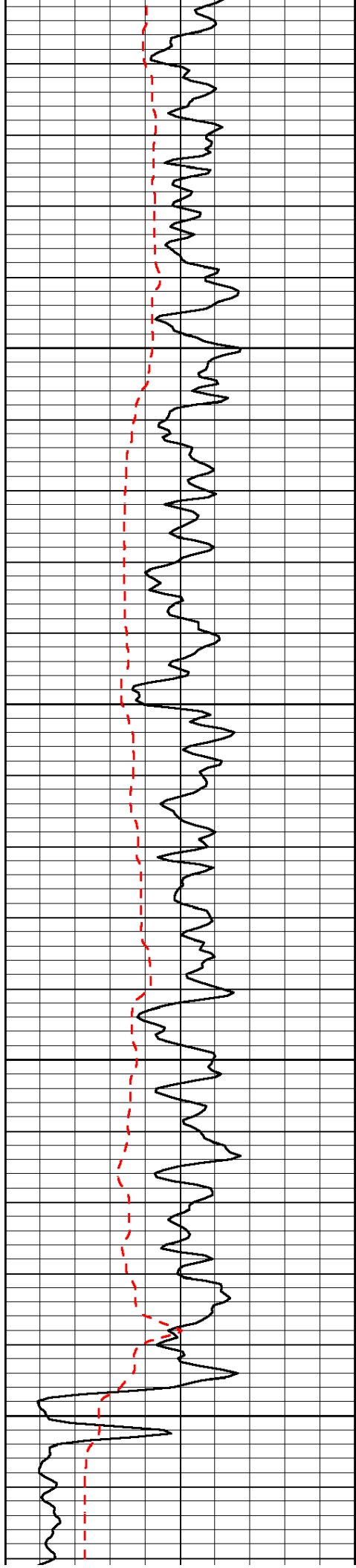
LSPD

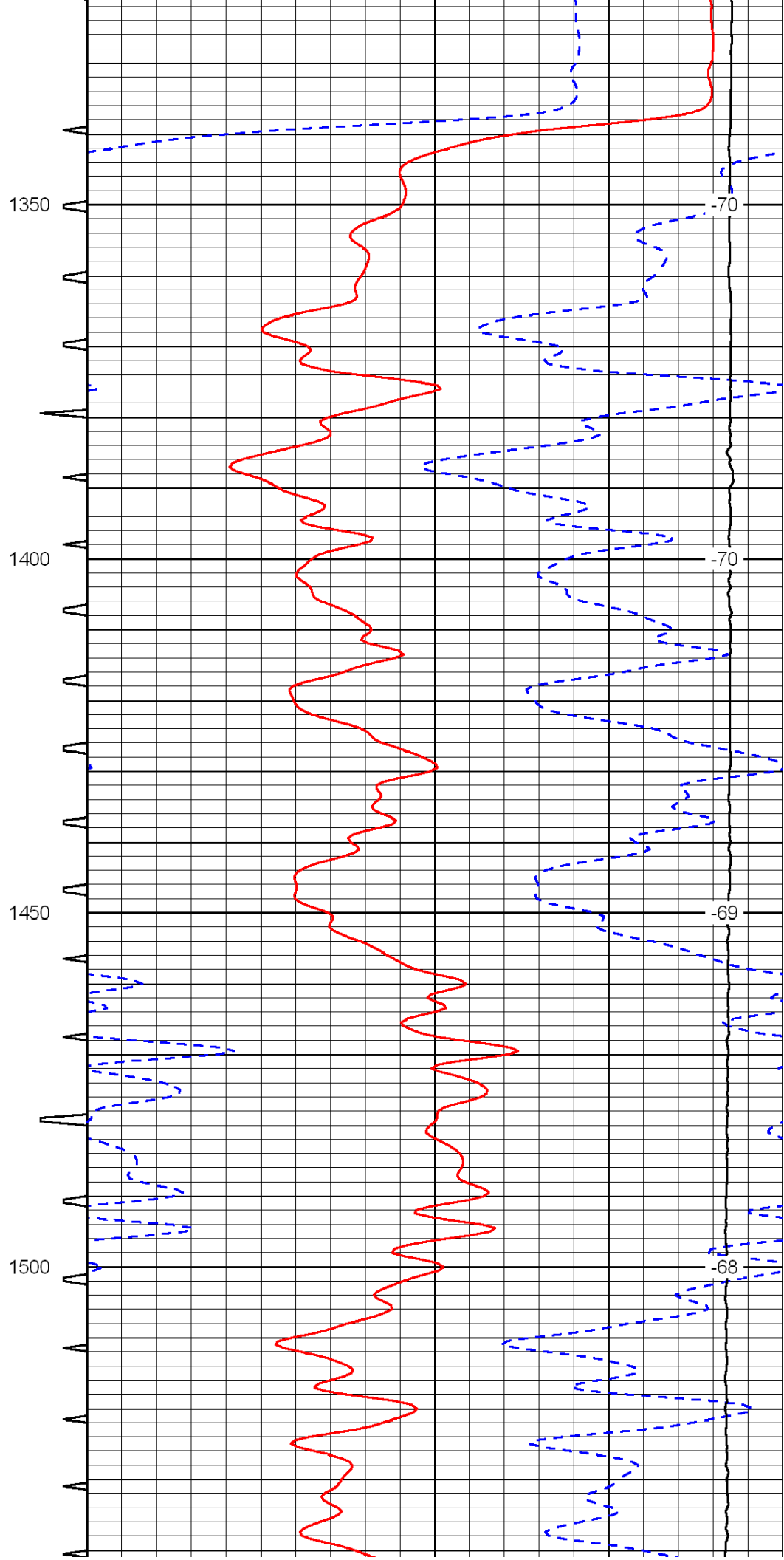
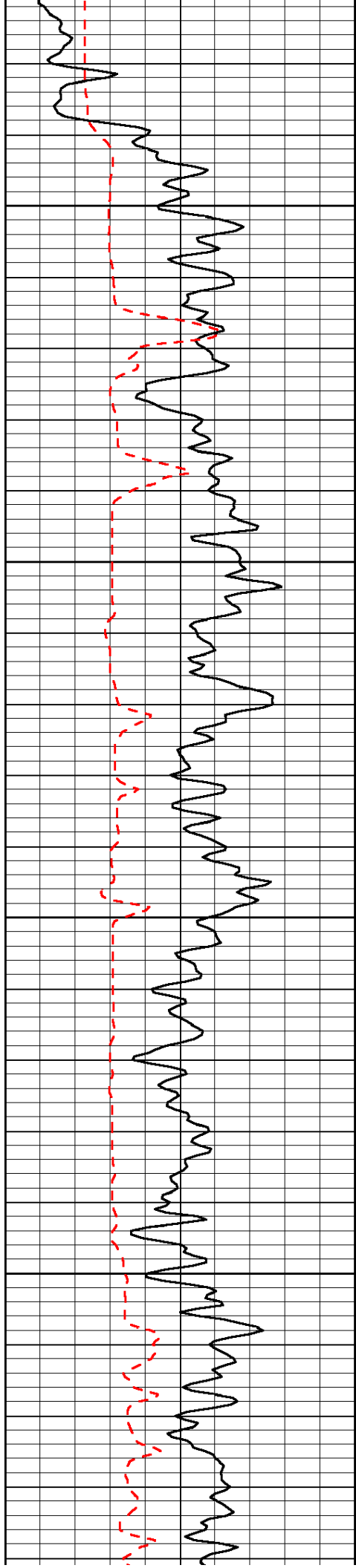


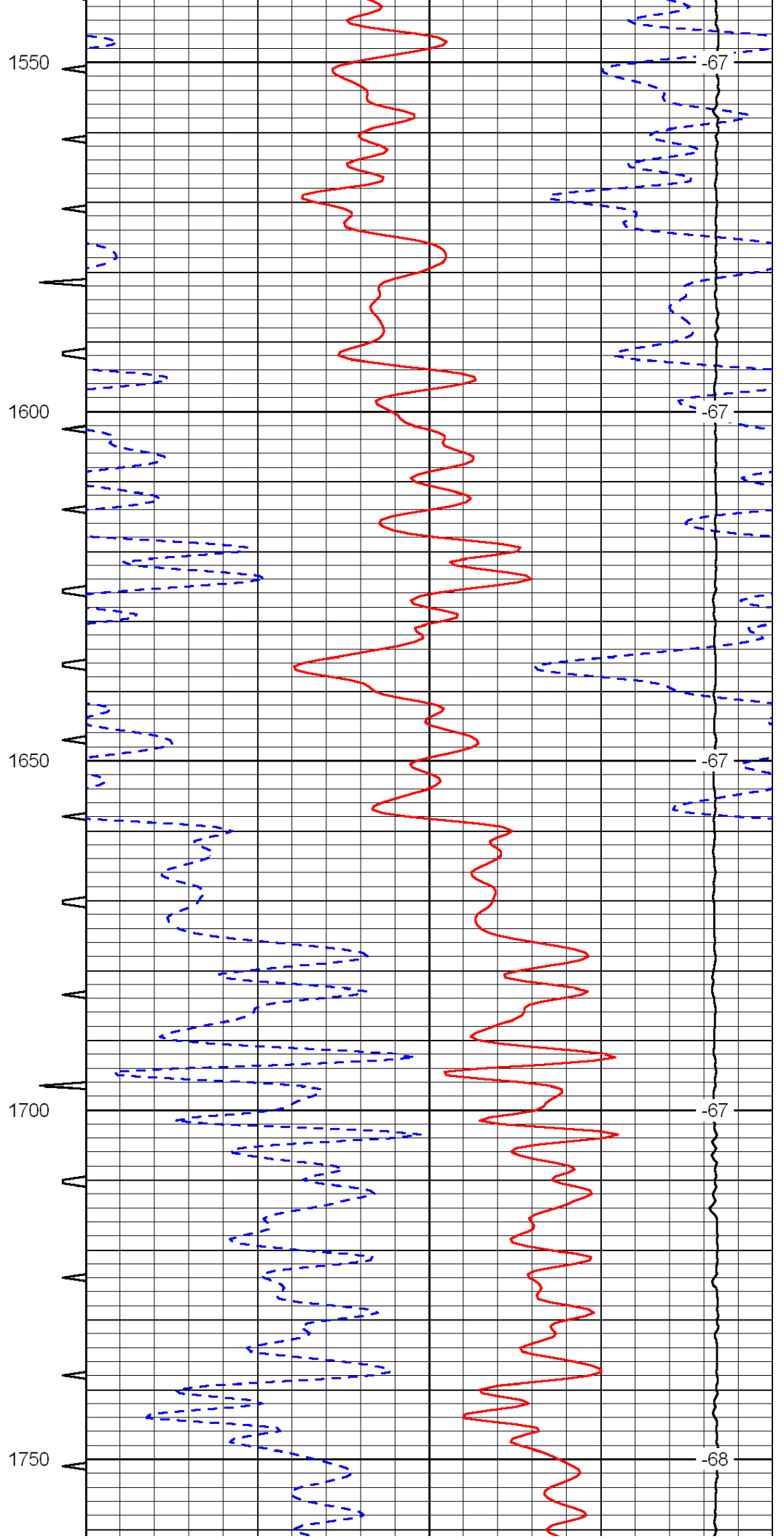
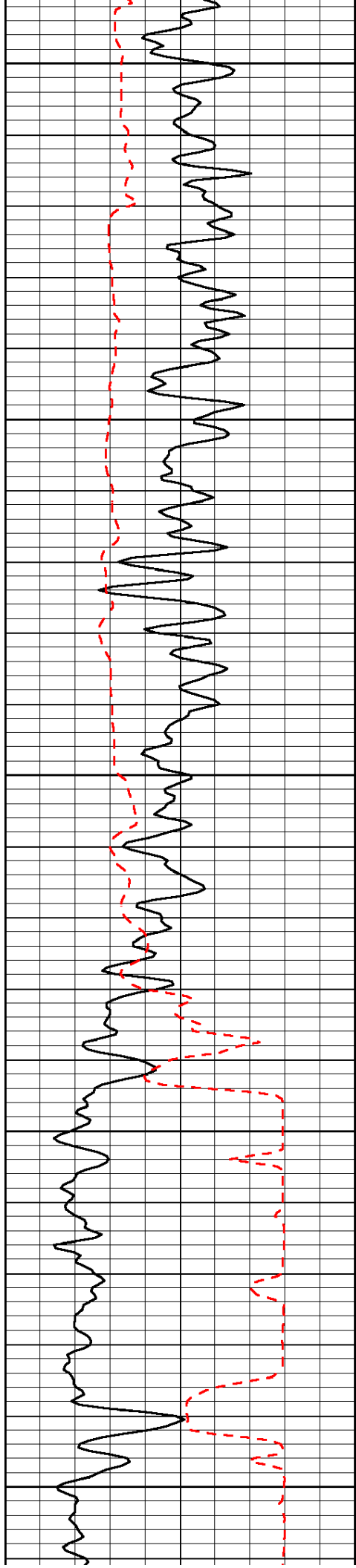


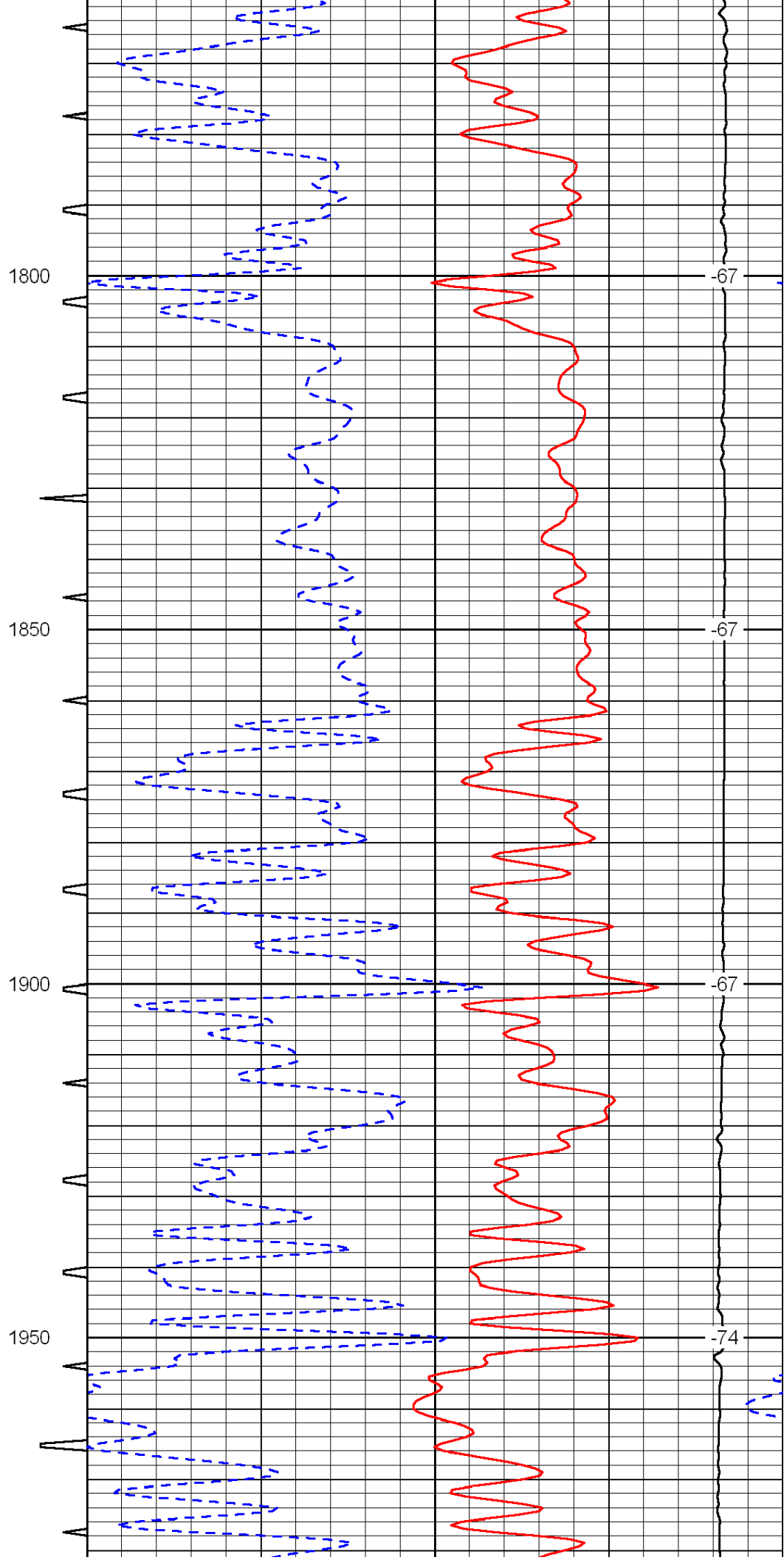
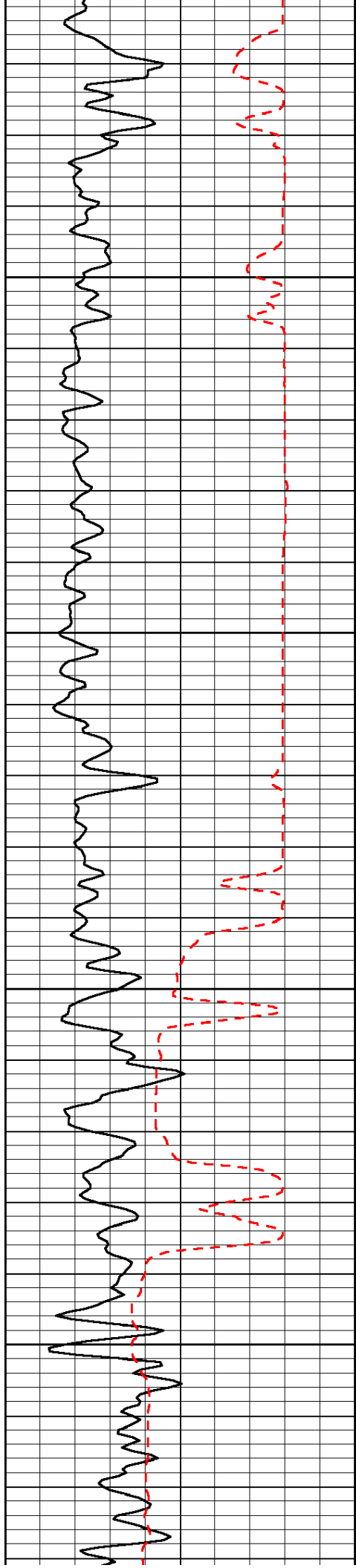


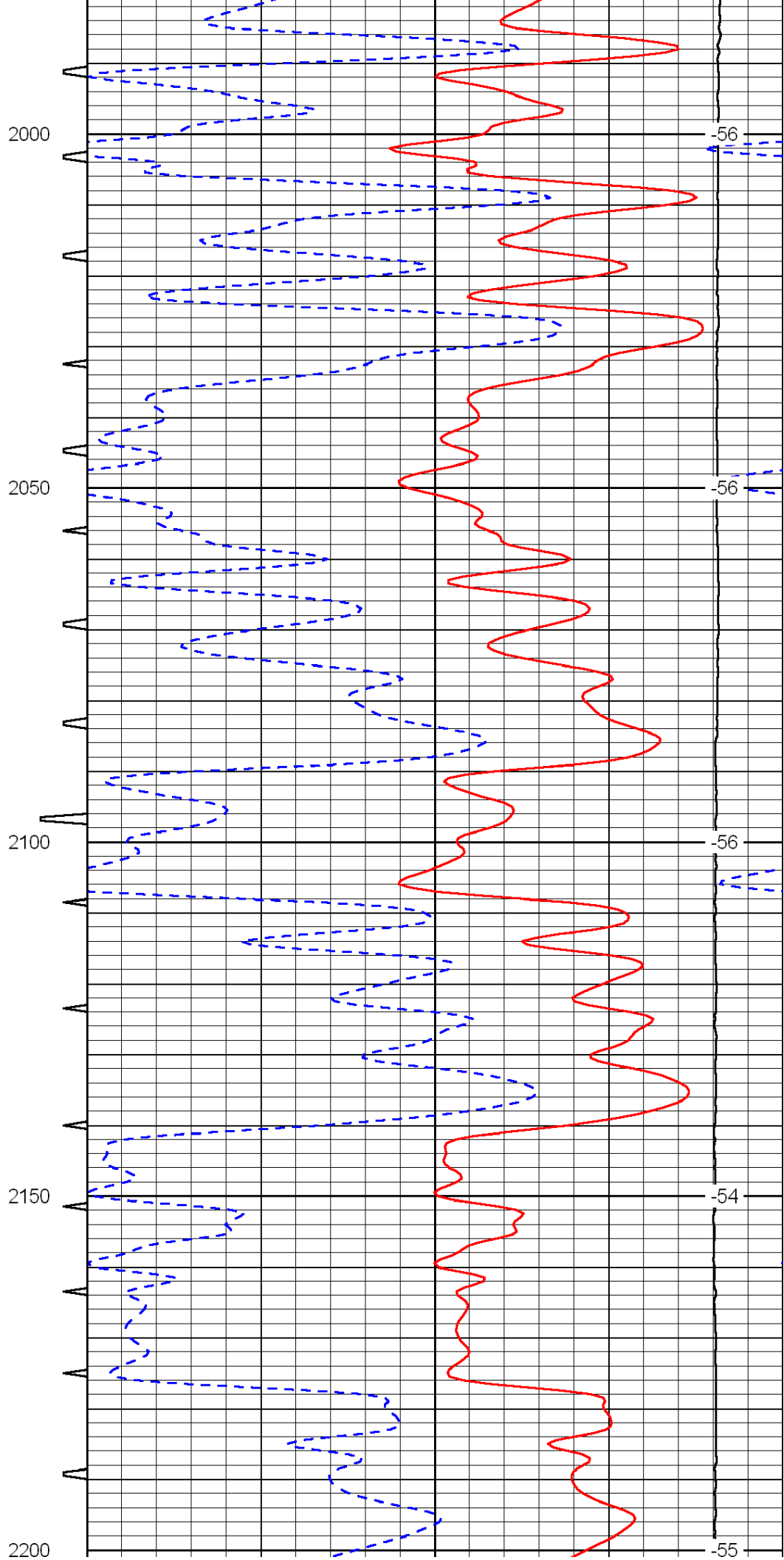
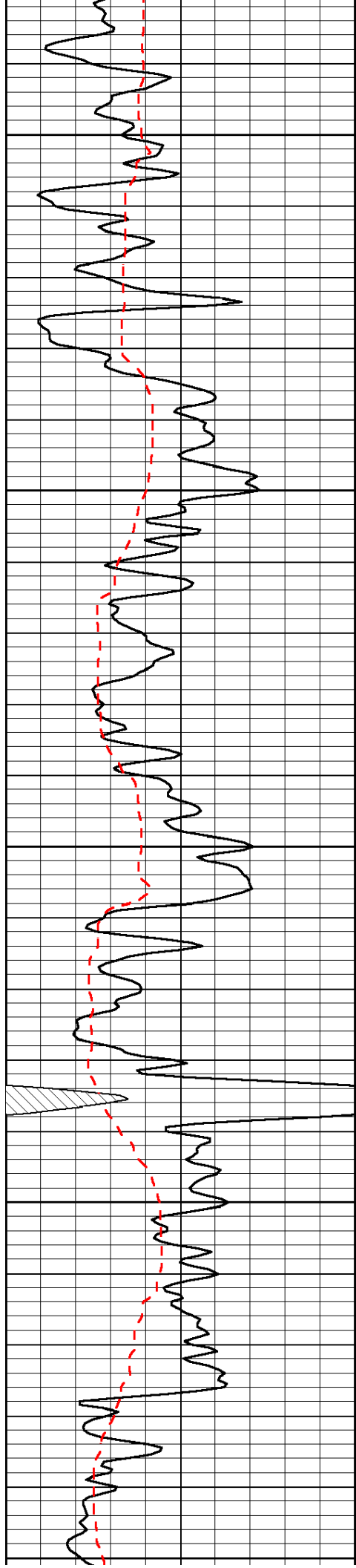


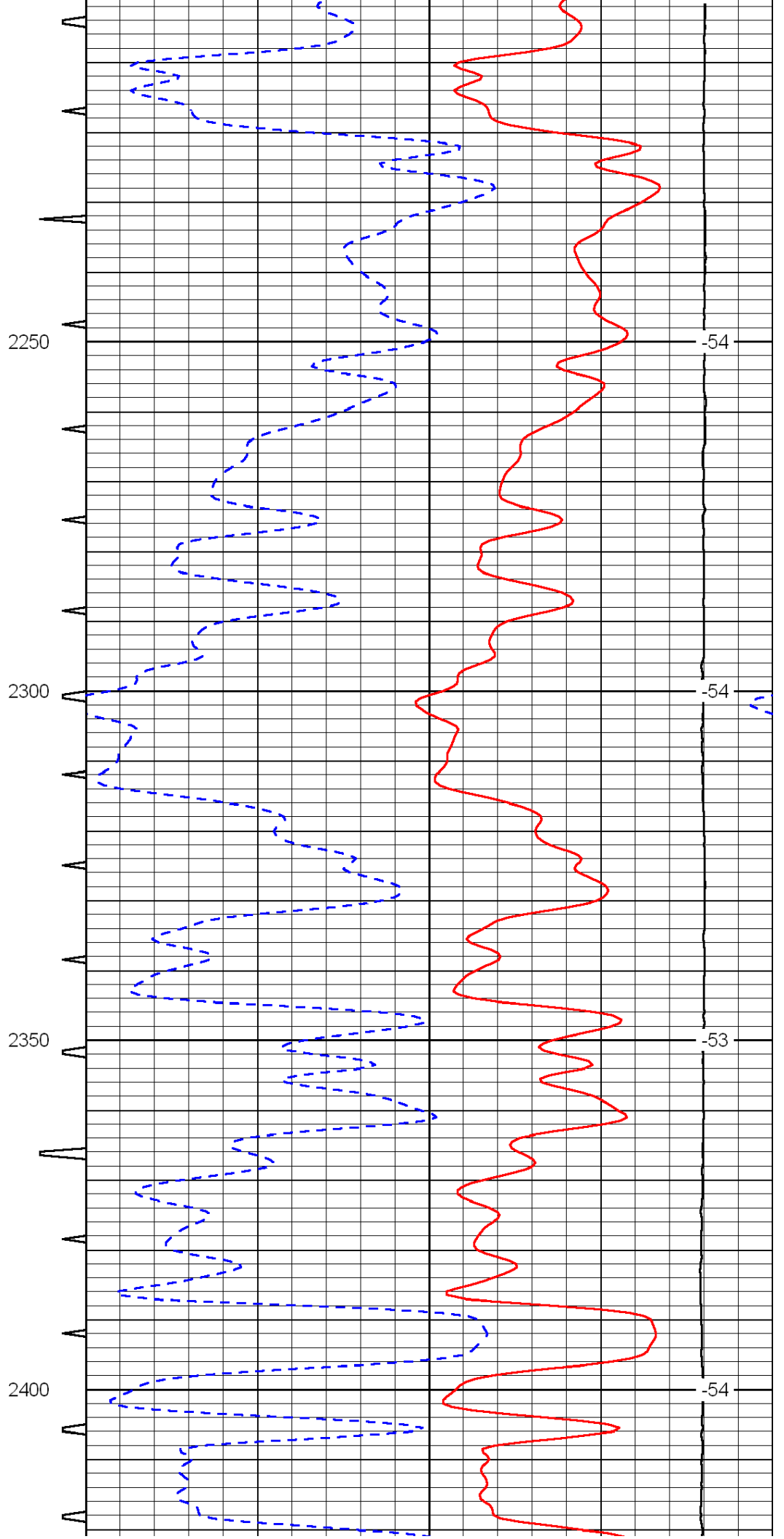
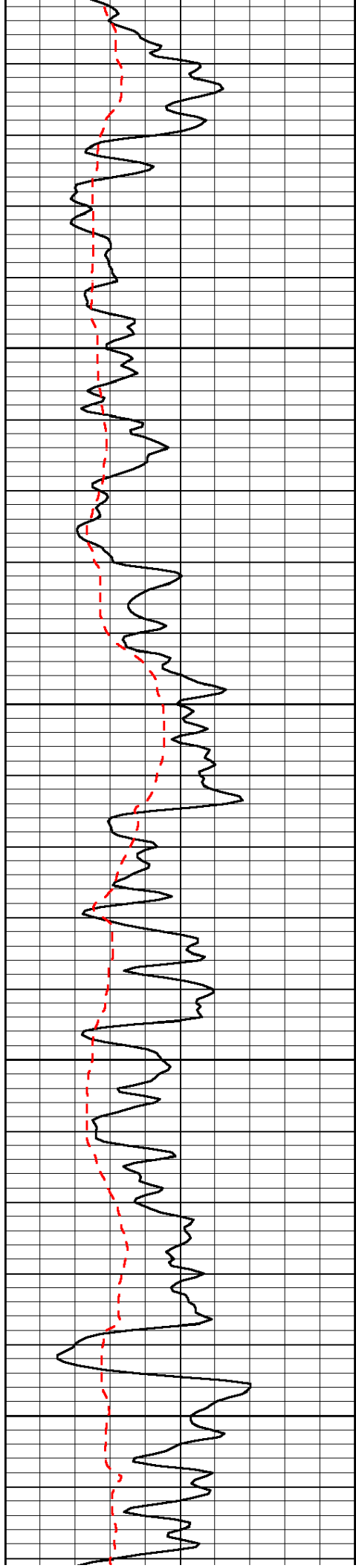


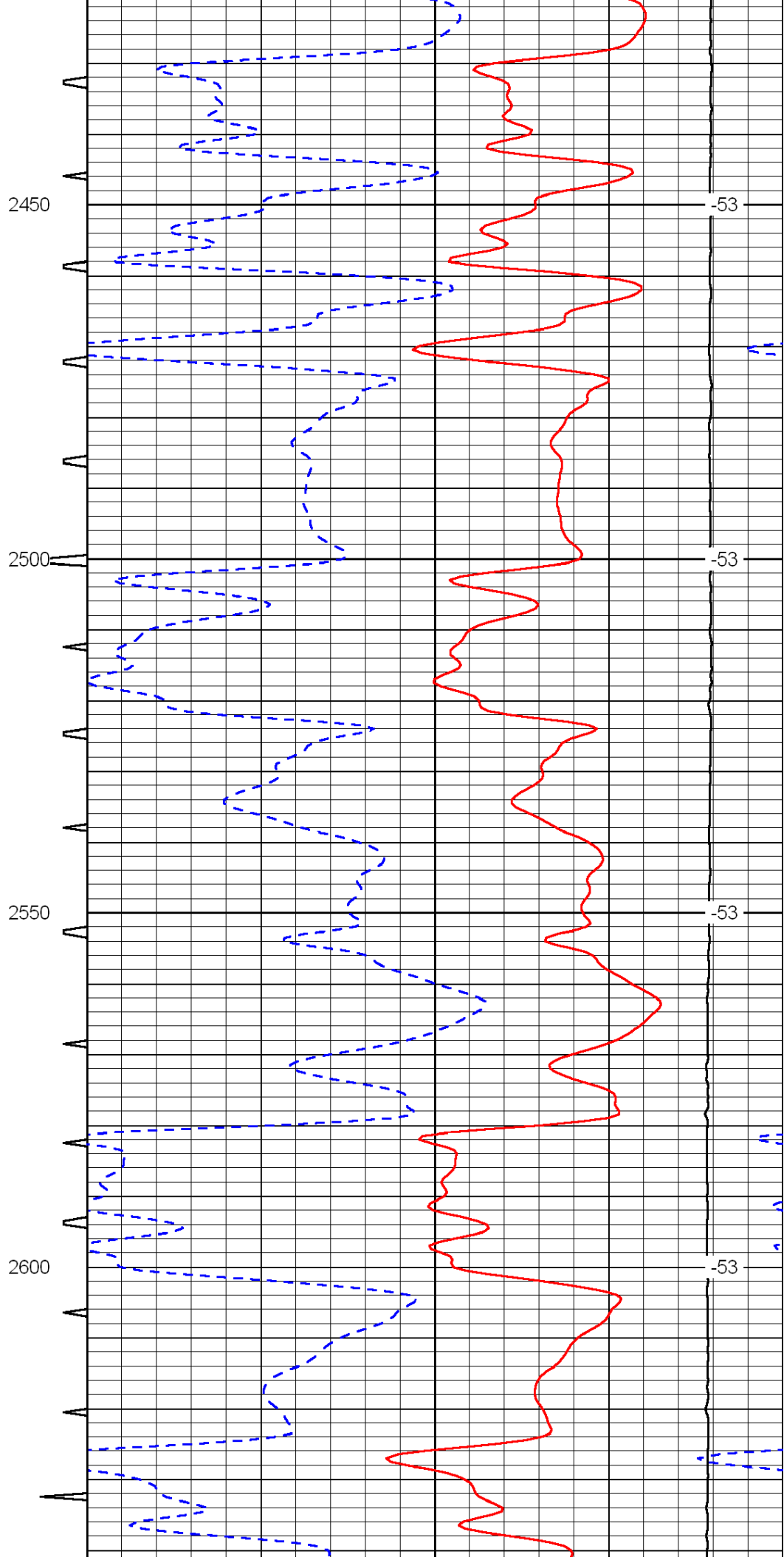
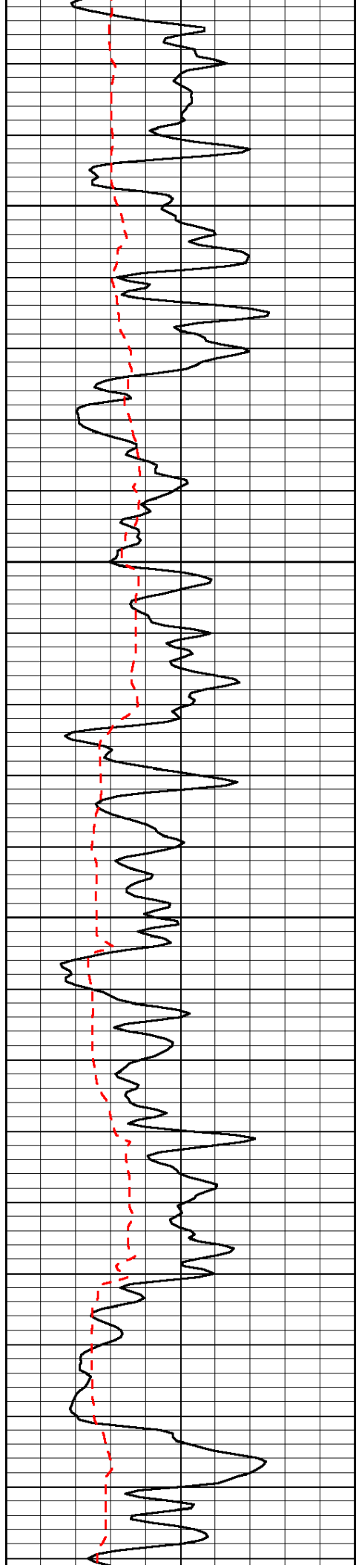


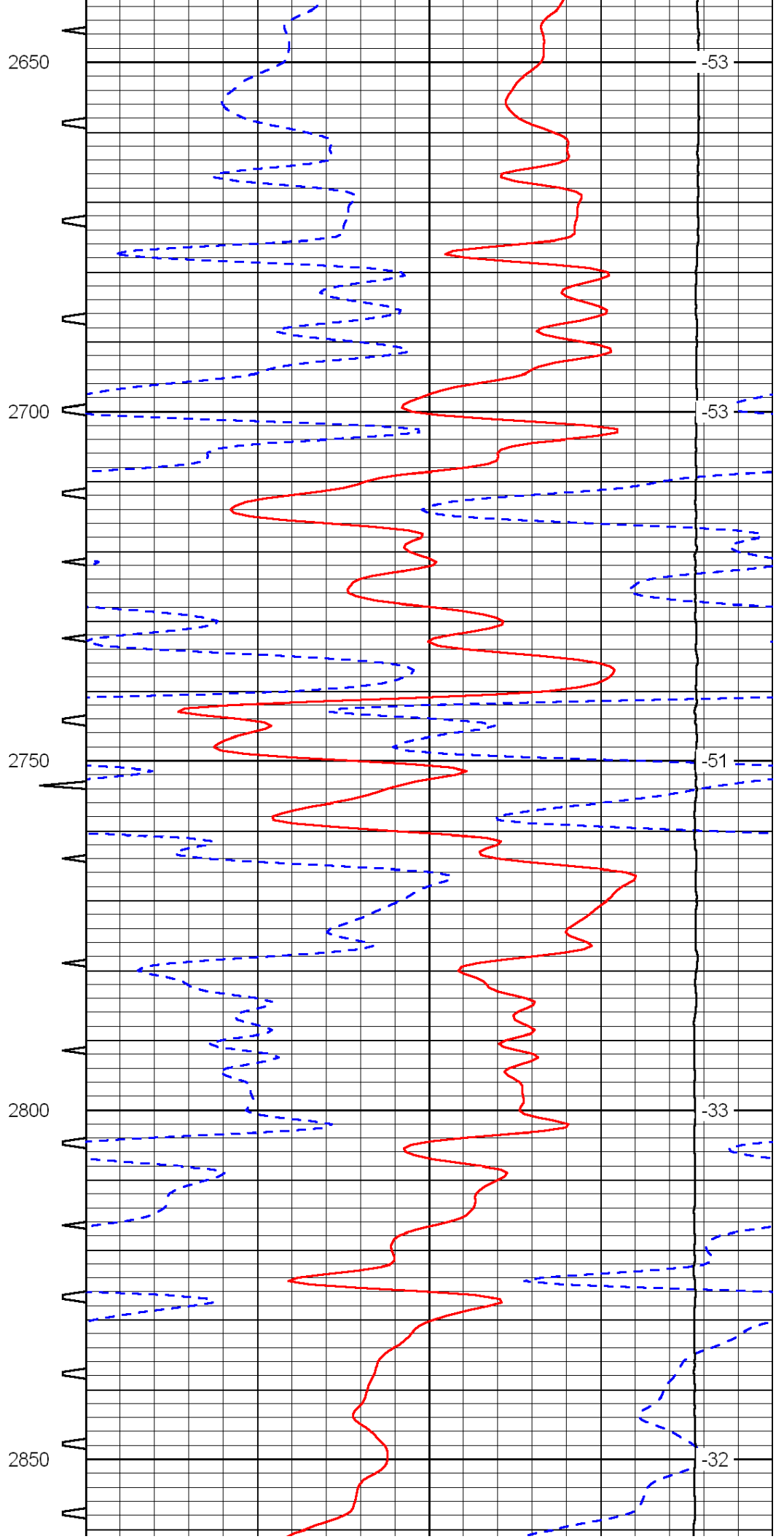
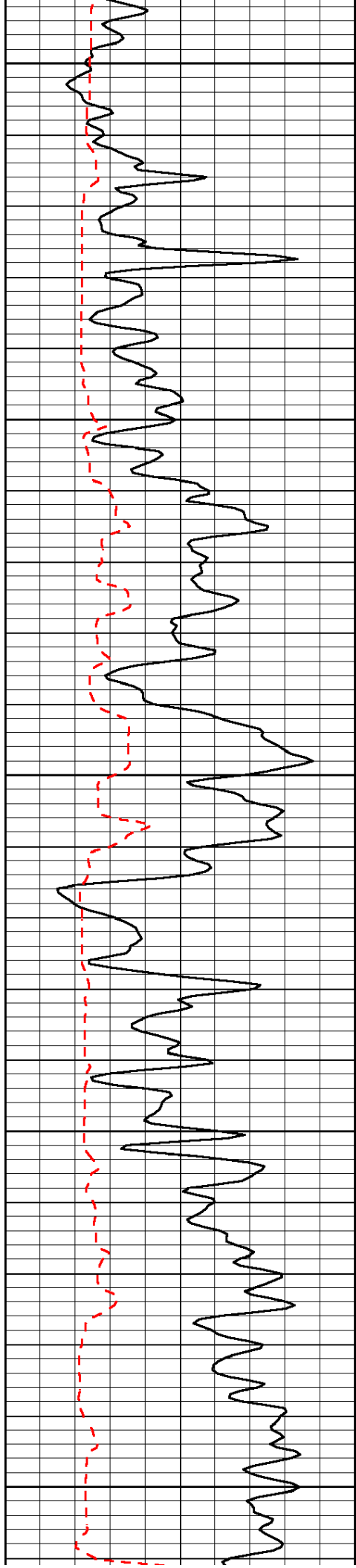


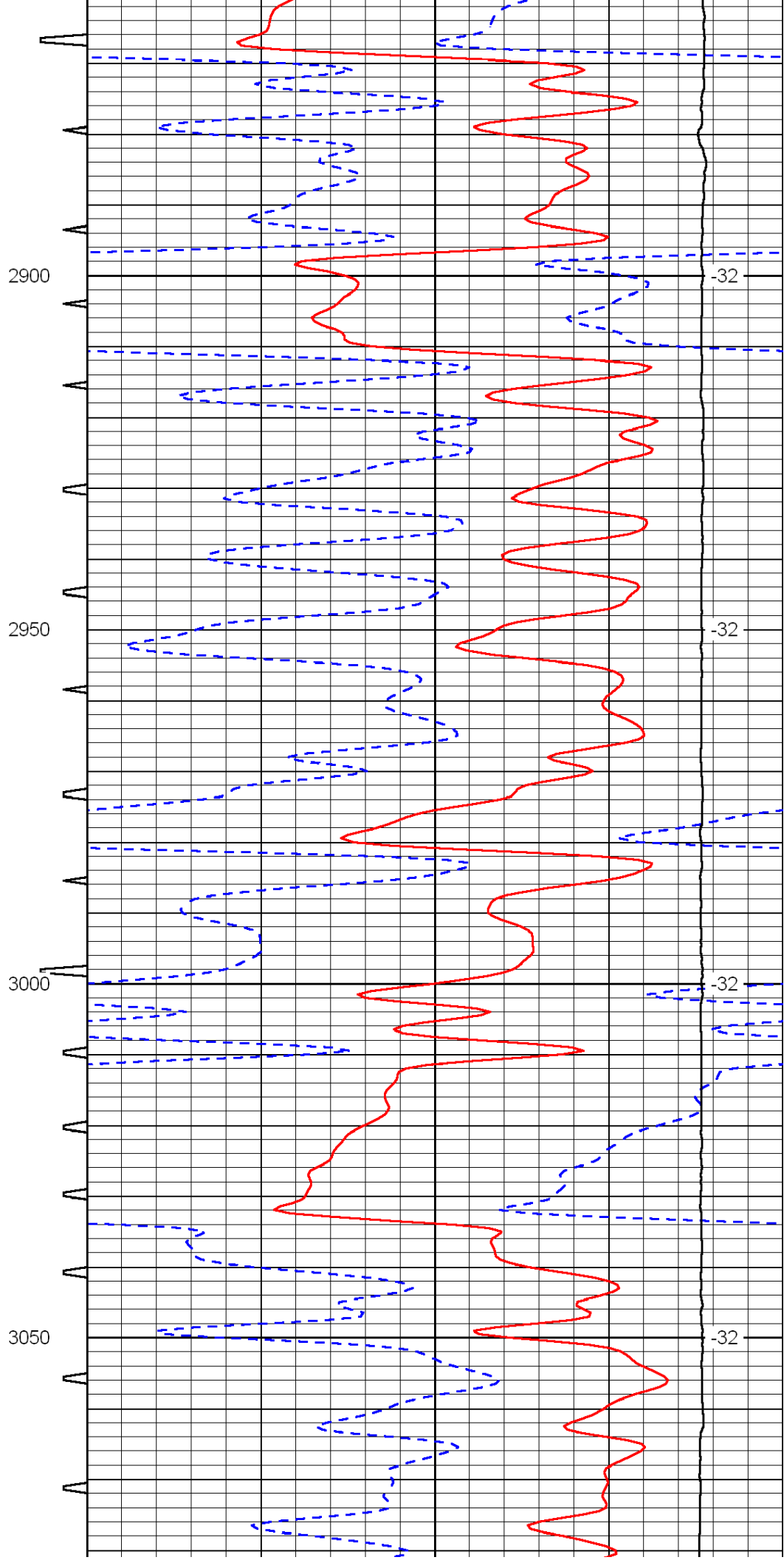
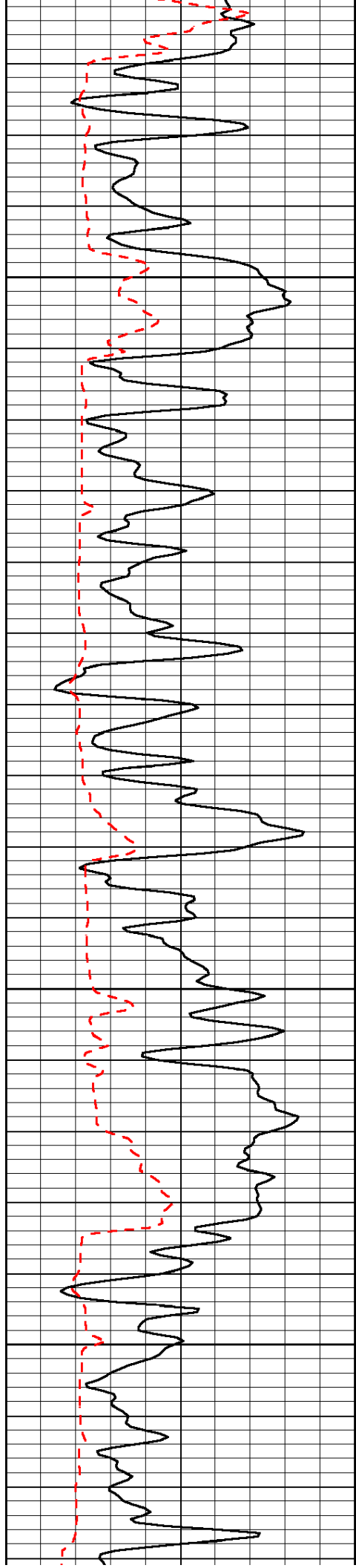


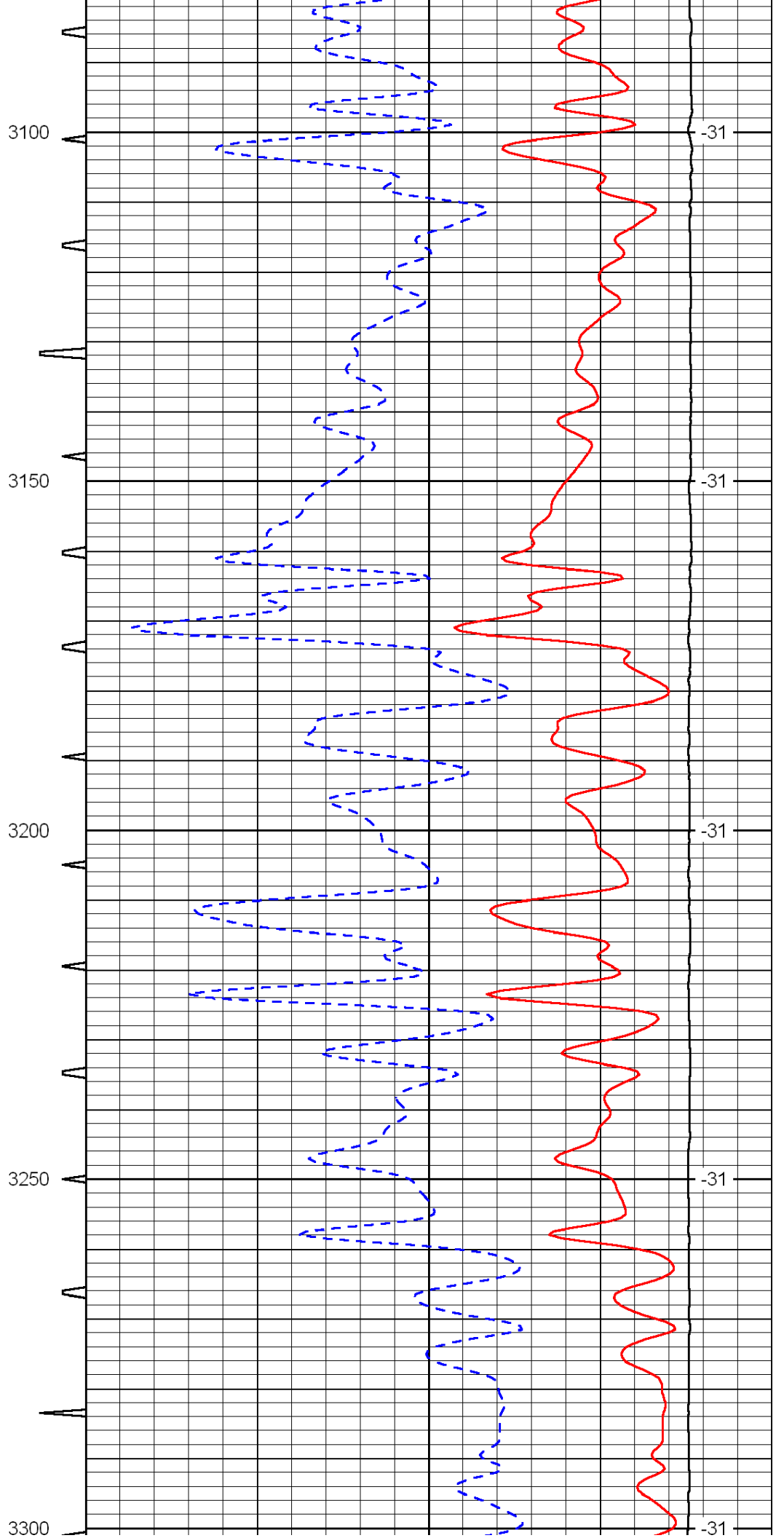
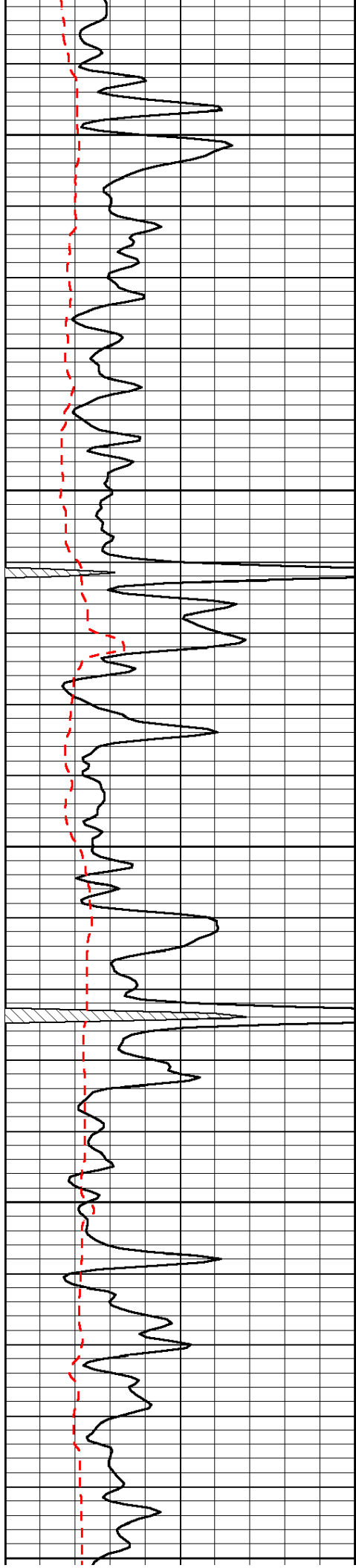


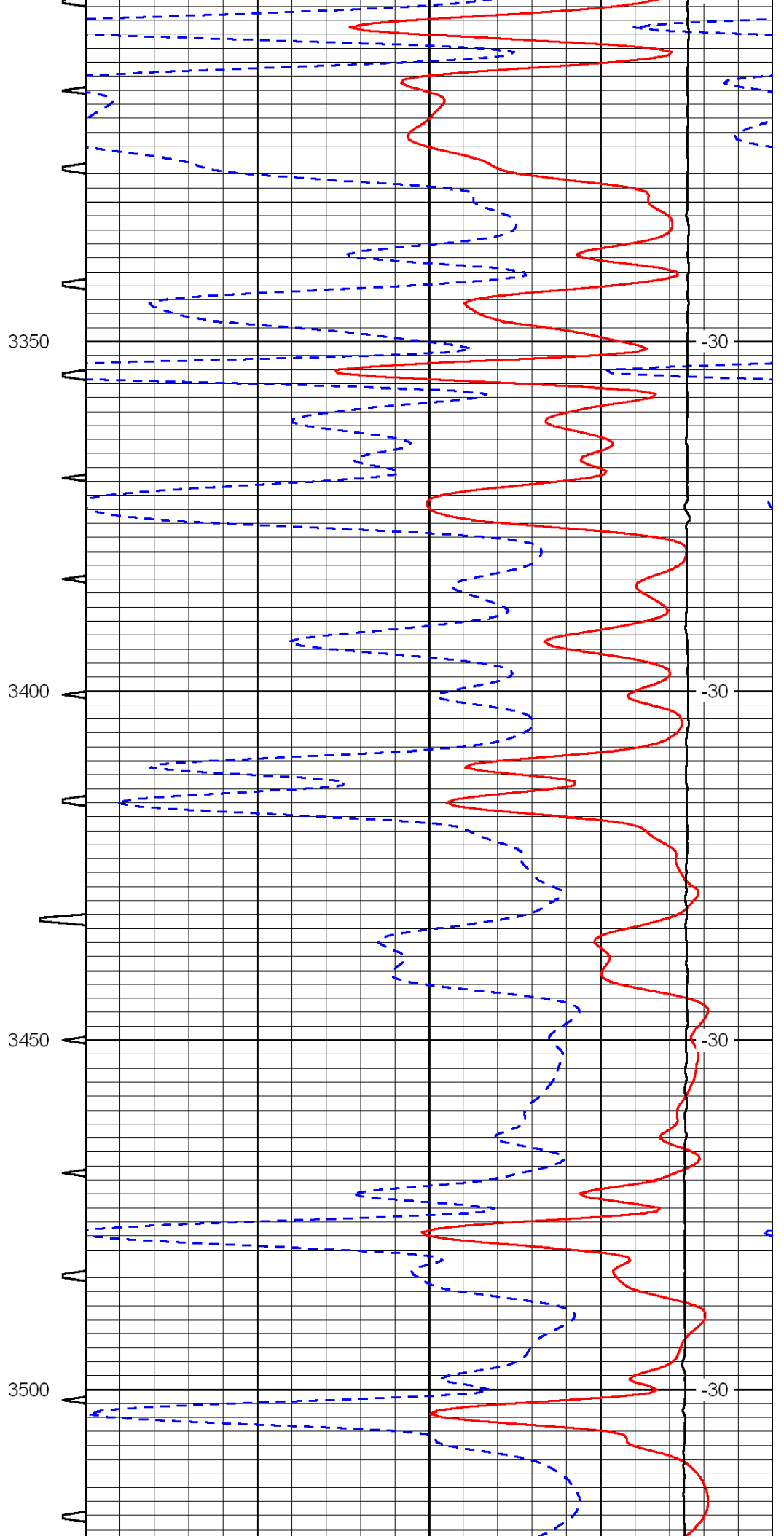
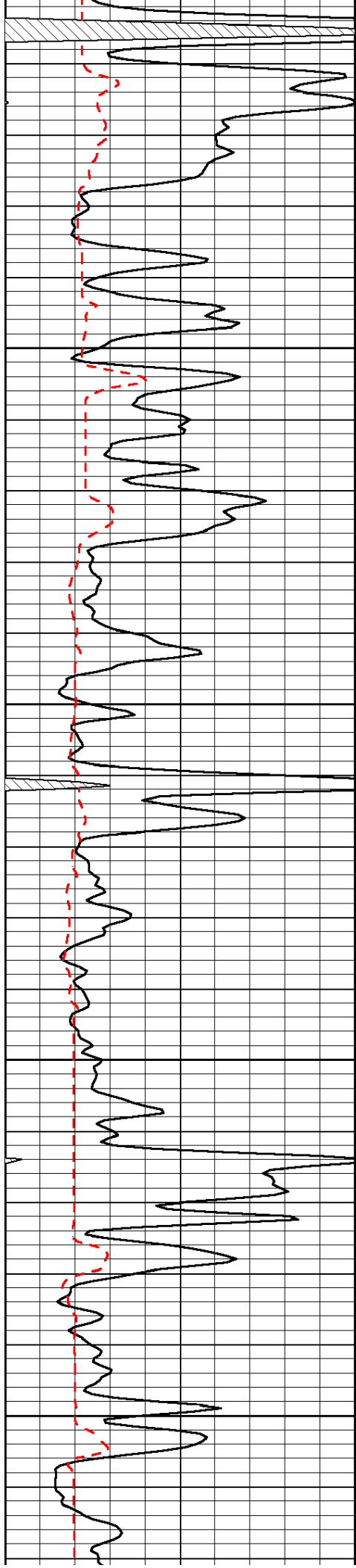


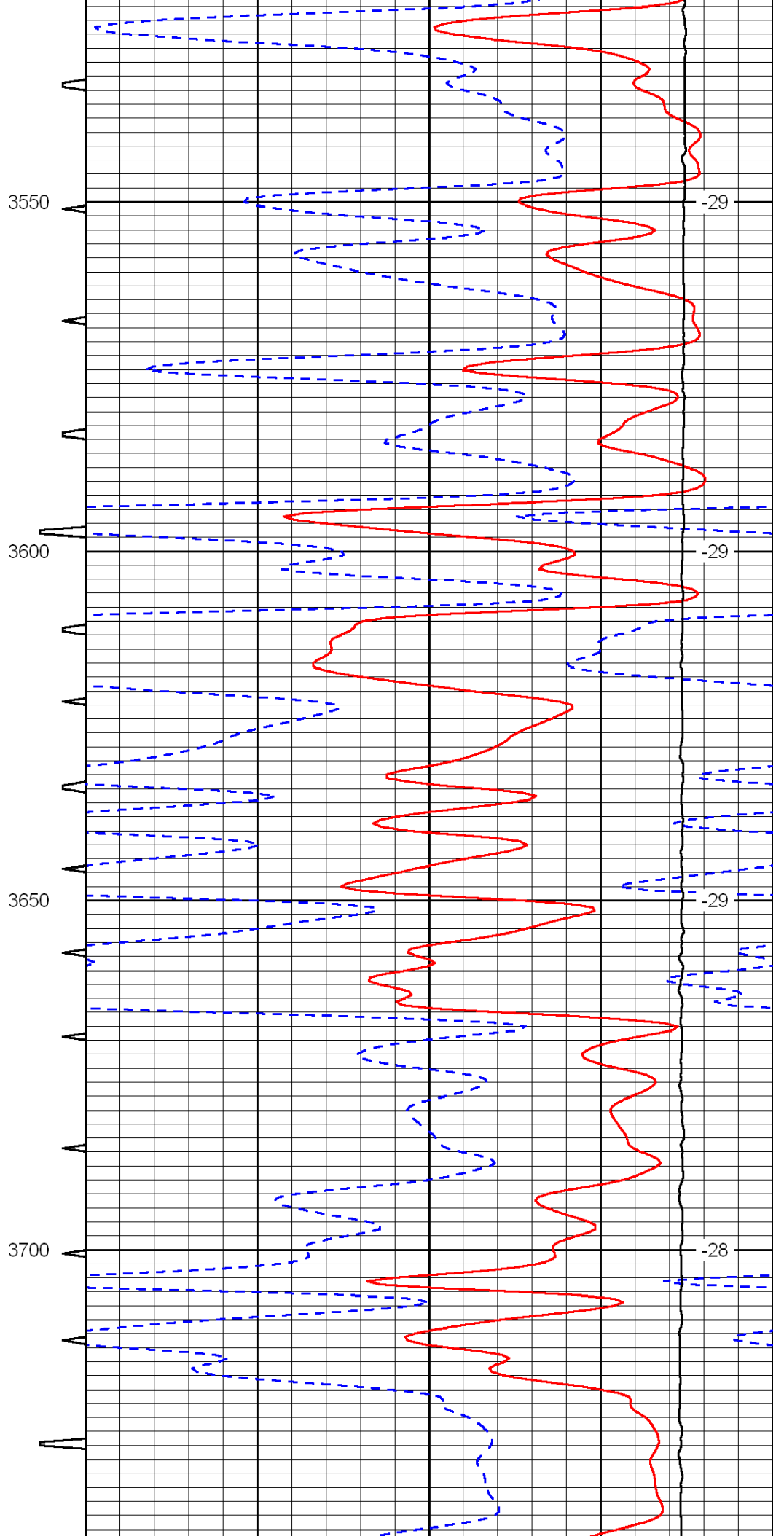
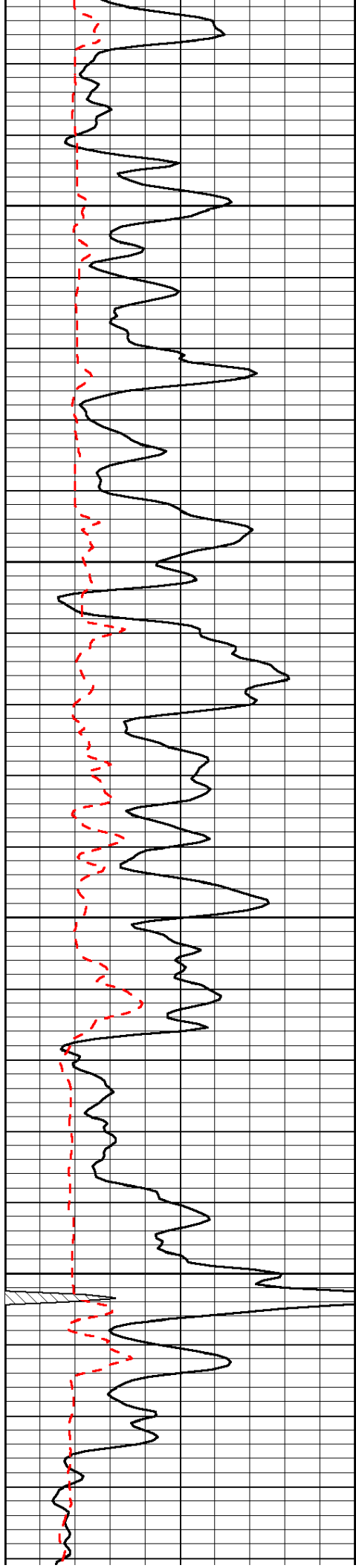


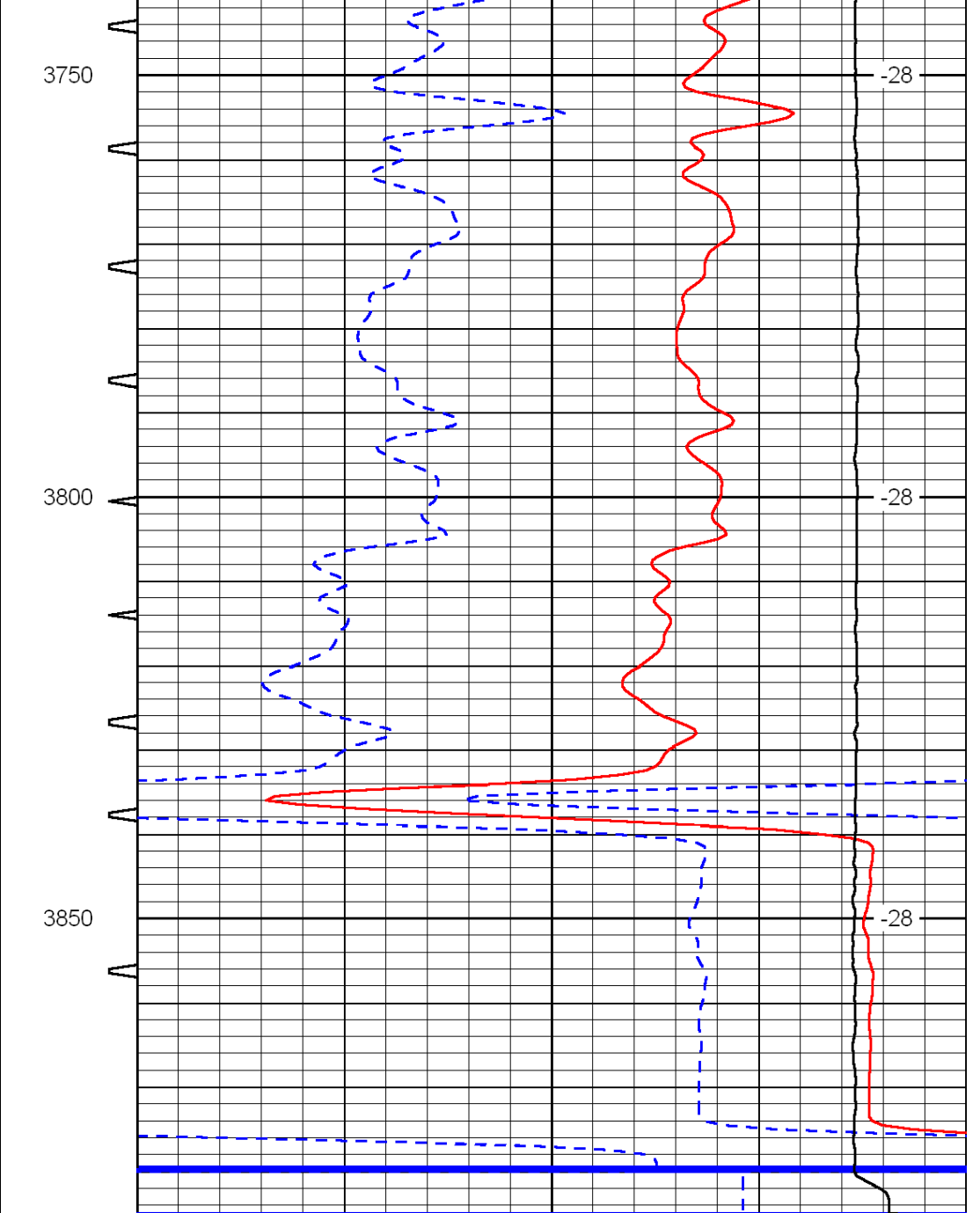
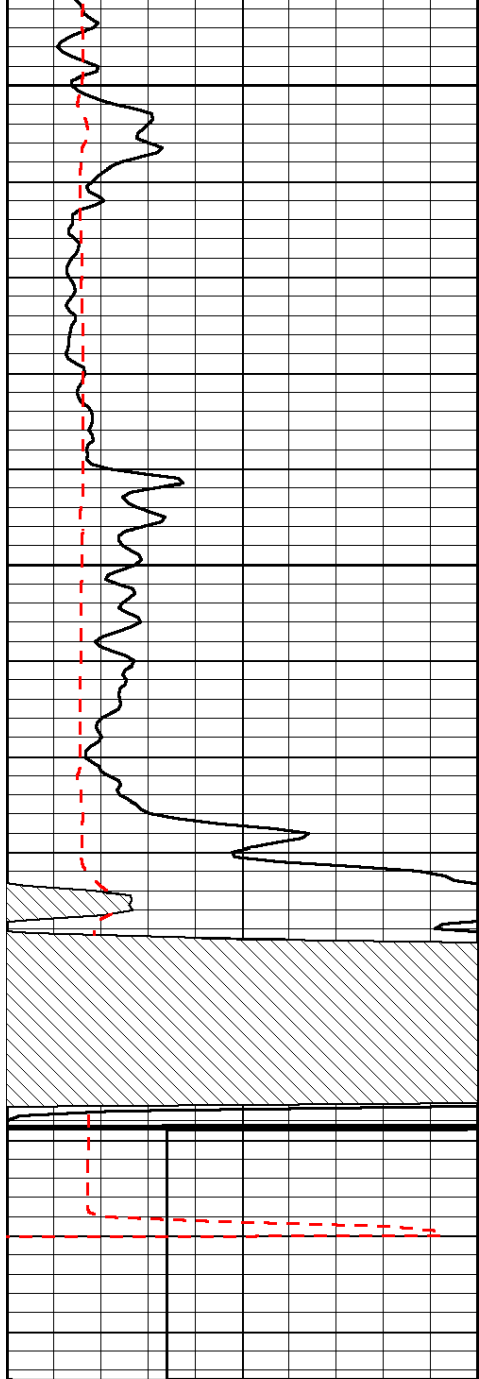












0	Gamma Ray	150	Sonic Int	140	Delta Time (usec/ft)	40
150	Gamma Ray	300	5	0	SPOR	-10
6	Caliper (GAPI)	16		15000	LTEN (lb)	0
LSPD						