



Microresistivity Log

DIGITAL LOG (785) 625-3858

API No.	15-051-26267-00-00		
Company	Hertel Oil Co., LLC		
Well	Wolf #2		
Field	Dechant South		
County	Ellis	State	Kansas
Location	1200' FNL & 1750' FEL		
Sec: 13	Twp: 15S	Rge: 19W	
Permanent Datum	Ground Level	Elevation 2031	Other Services CNL/CDL DIL
Log Measured From	Kelly Bushing	8 Ft. Above Perm. Datum	
Drilling Measured From	Kelly Bushing		K.B. 2039
			D.F. 2031
			G.L. 2031

Date	2/29/2011
Run Number	Two
Depth Driller	3767
Depth Logger	3770
Bottom Logged Interval	3769
Top Log Interval	2900
Casing Driller	8.625 @ 223
Casing Logger	220
Bit Size	7.875
Type Fluid in Hole	Chemical
Salinity, ppm CL	3000
Density / Viscosity	9.1 60
pH / Fluid Loss	9.5 7.6
Source of Sample	Flowline
Rm @ Meas. Temp	1.5 @ 65
Rmf @ Meas. Temp	1.13 @ 65
Rmc @ Meas. Temp	2.03 @ 65
Source of Rmf / Rmc	Charts
Rm @ BHT	0.86 @ 114
Operating Rig Time	4 Hours
Max Rec. Temp. F	114
Equipment Number	17
Location	Hays
Recorded By	D. Schmidt
Witnessed By	Jeff Lawler

<<< Fold Here >>>

All interpretations are opinions based on inferences from electrical or other measurements and we cannot and do not guarantee the accuracy or correctness of any interpretation, and we shall not, except in the case of gross or willful negligence on our part, be liable or responsible for any loss, costs, damages, or expenses incurred or sustained by anyone resulting from any interpretation made by any of our officers, agents or employees. These interpretations are also subject to our general terms and conditions set out in our current Price Schedule.

Comments

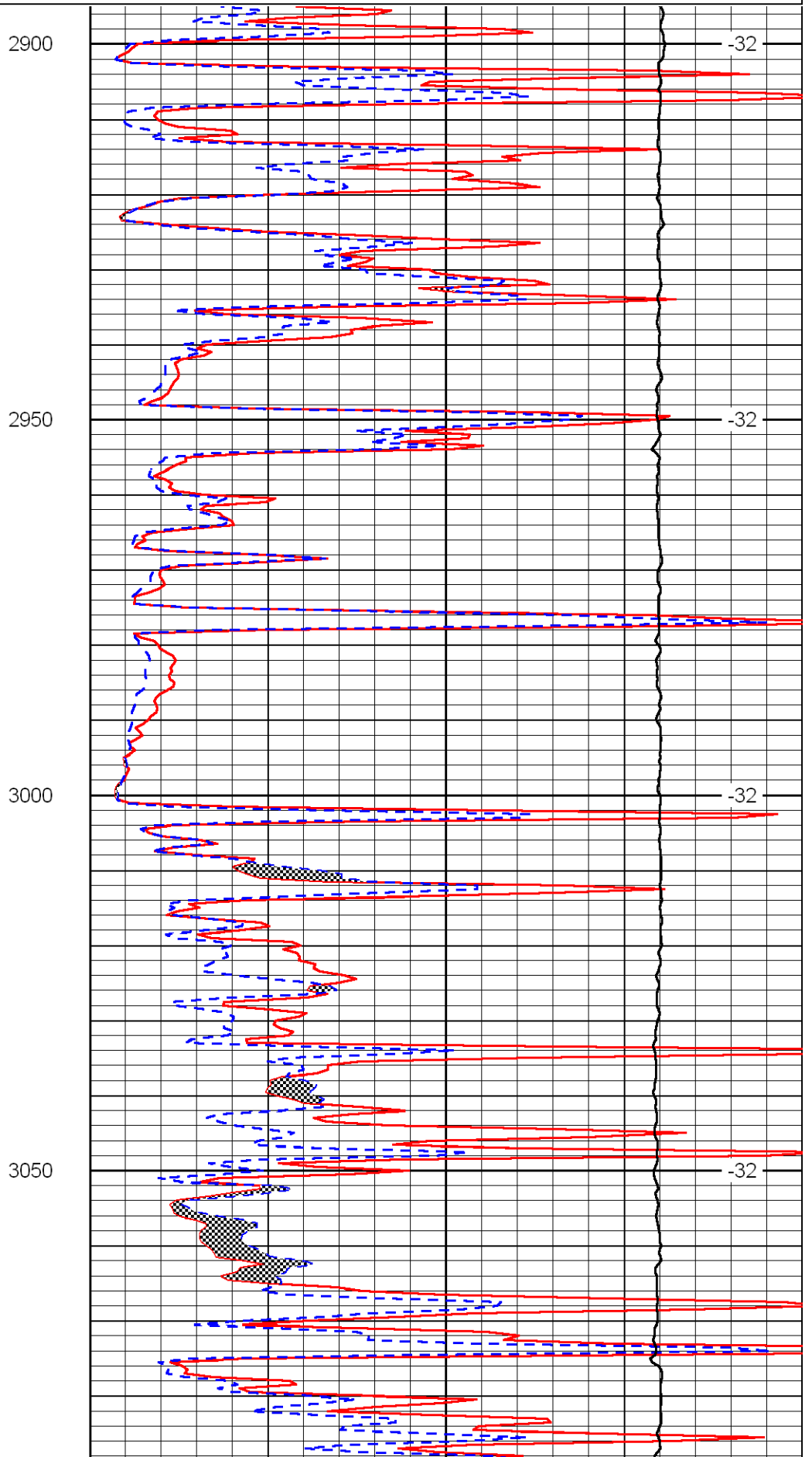
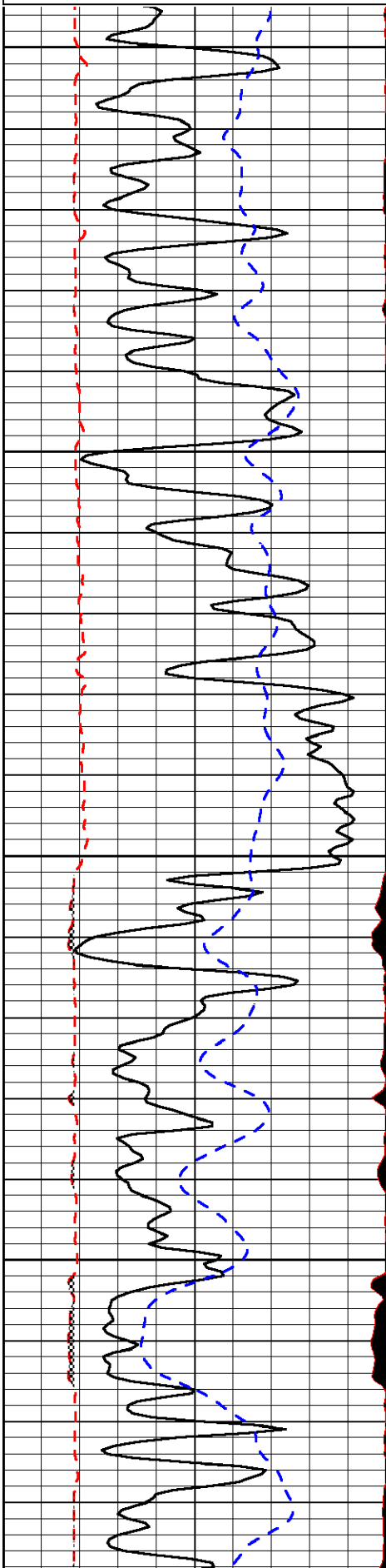
Thank you for using Log-Tech, Inc.
(785) 625-3858

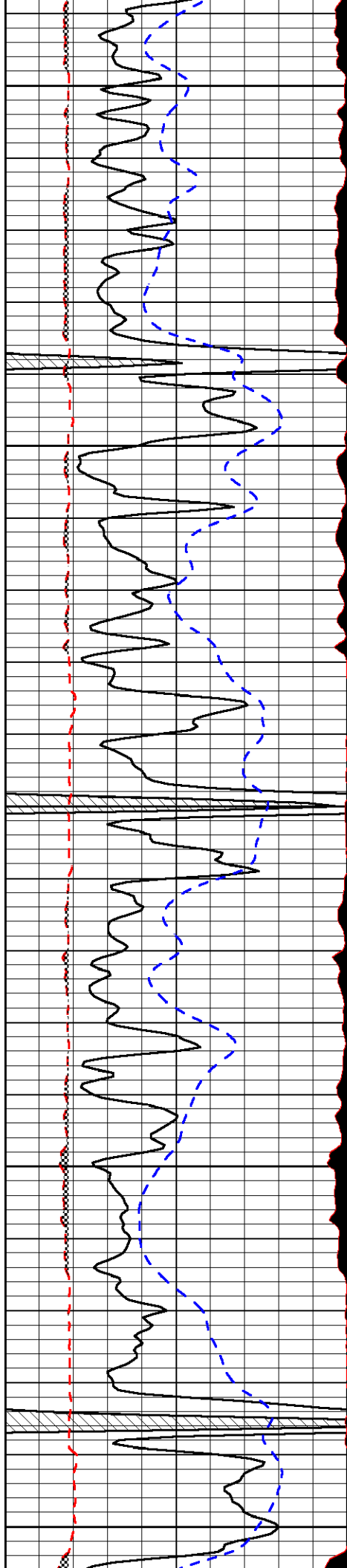
Antonino,
2 S, 1/2 E,
S into

Database File: hertel_wolf-2hd.db
 Dataset Pathname: dil/hertstack
 Presentation Format: micro
 Dataset Creation: Wed Feb 29 05:28:48 2012
 Charted by: Depth in Feet scaled 1:240

0	Gamma Ray	150
6	MCAL (GAPI)	16
2.875	Mud Cake (GAPI)	7.875
-200	SP	0

0	Micro Inverse 1 X 1	40
0	Micro Normal 2"	40
10000	Line Weight	0
		LSPD





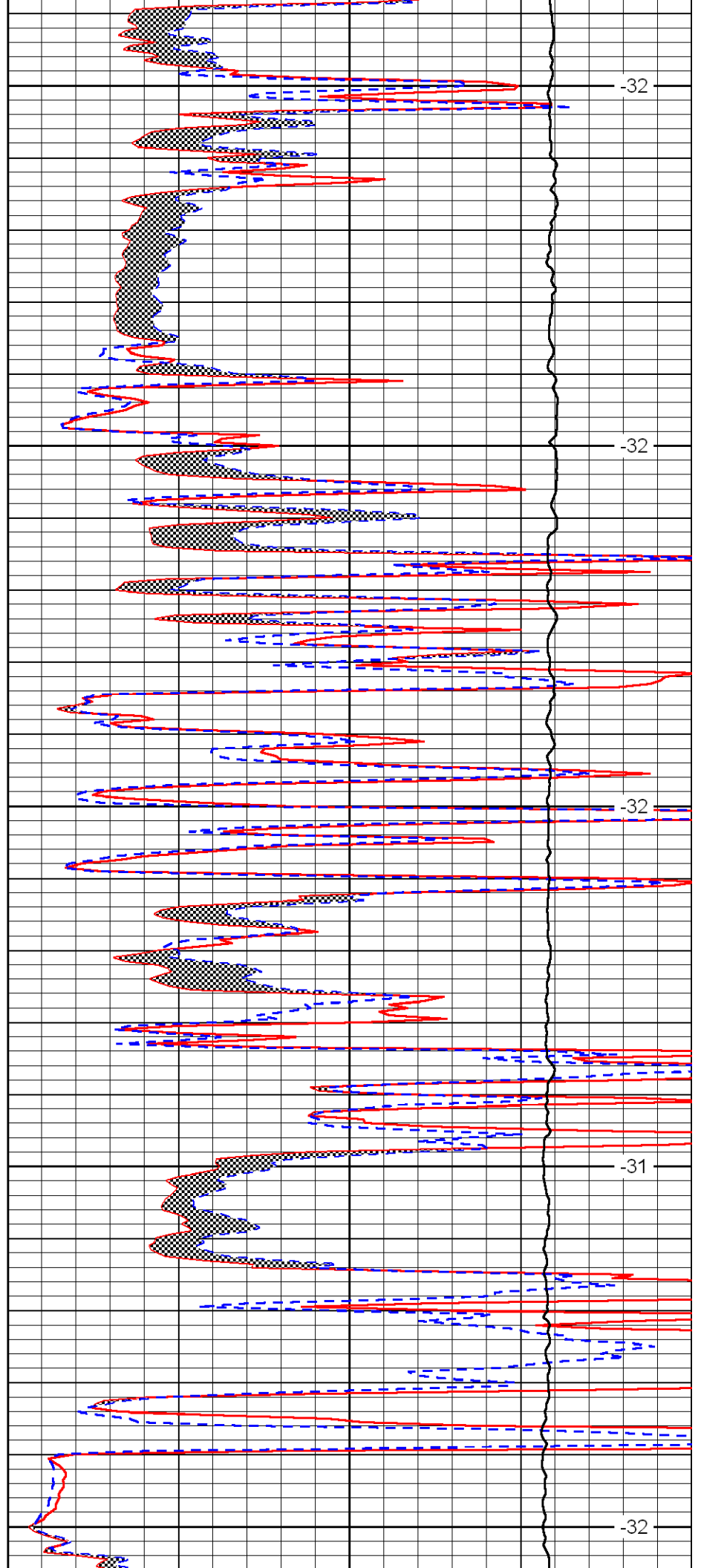
3100

3150

3200

3250

3300



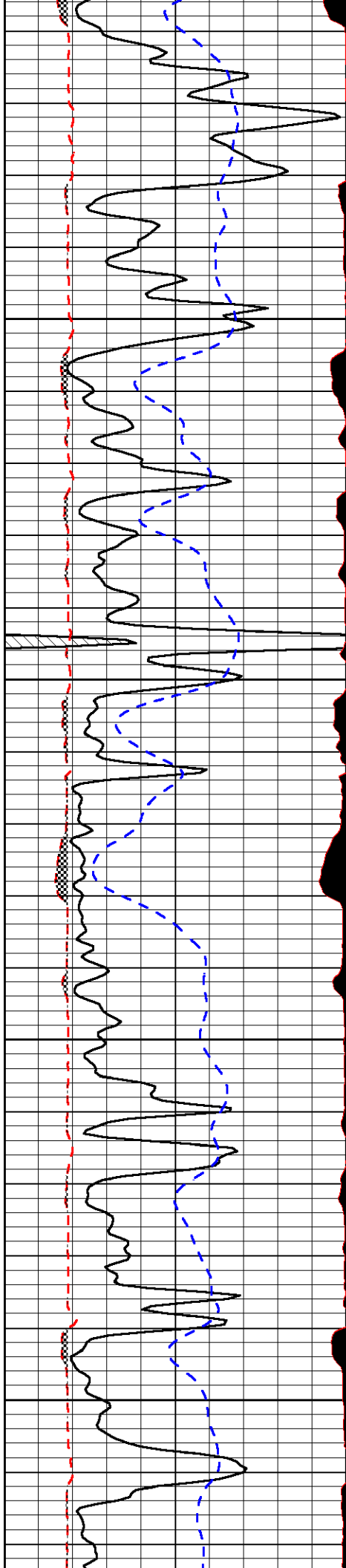
-32

-32

-32

-31

-32

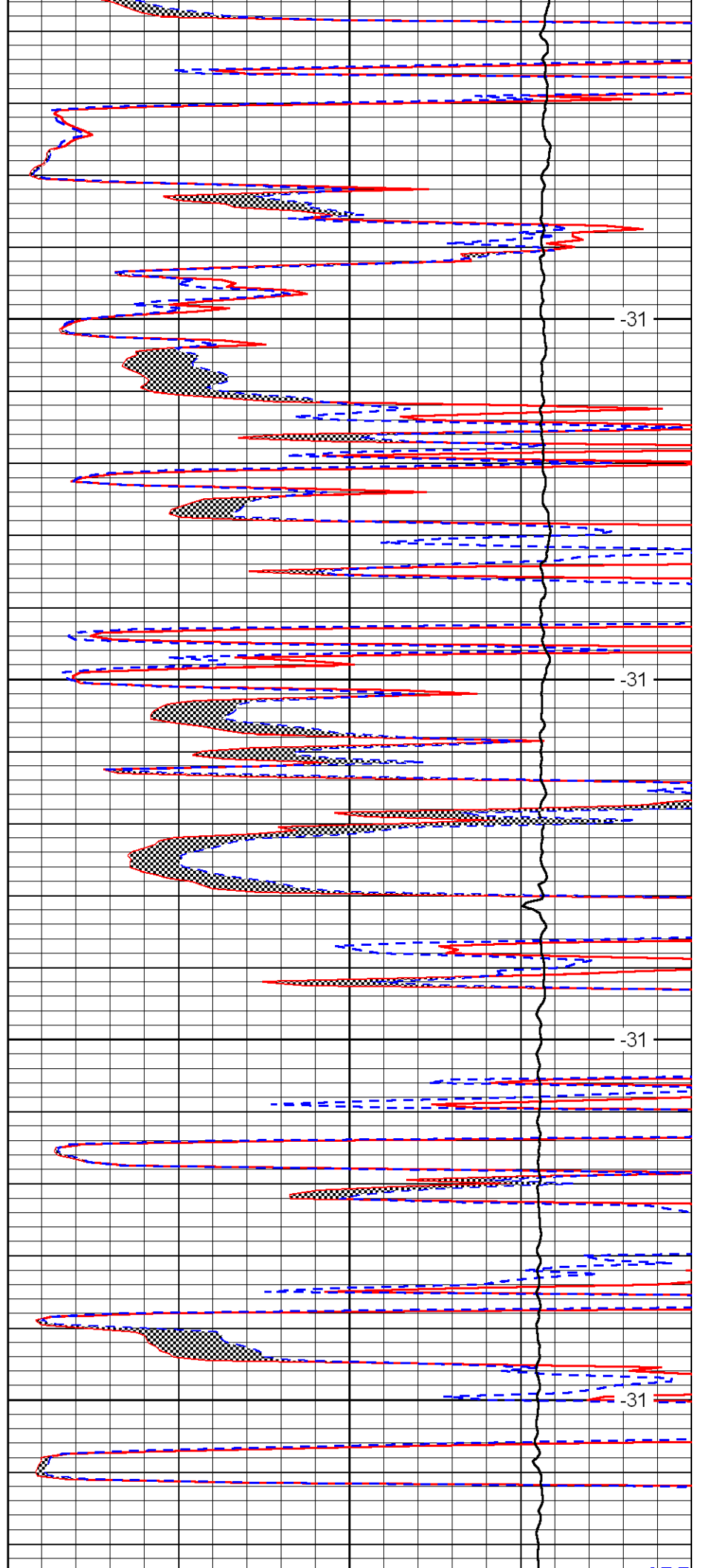


3350

3400

3450

3500

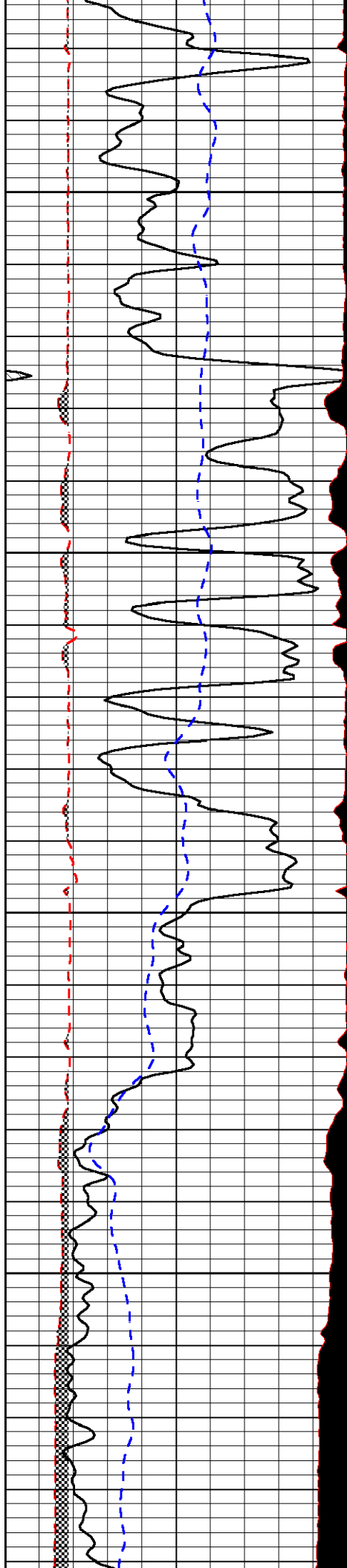


-31

-31

-31

-31

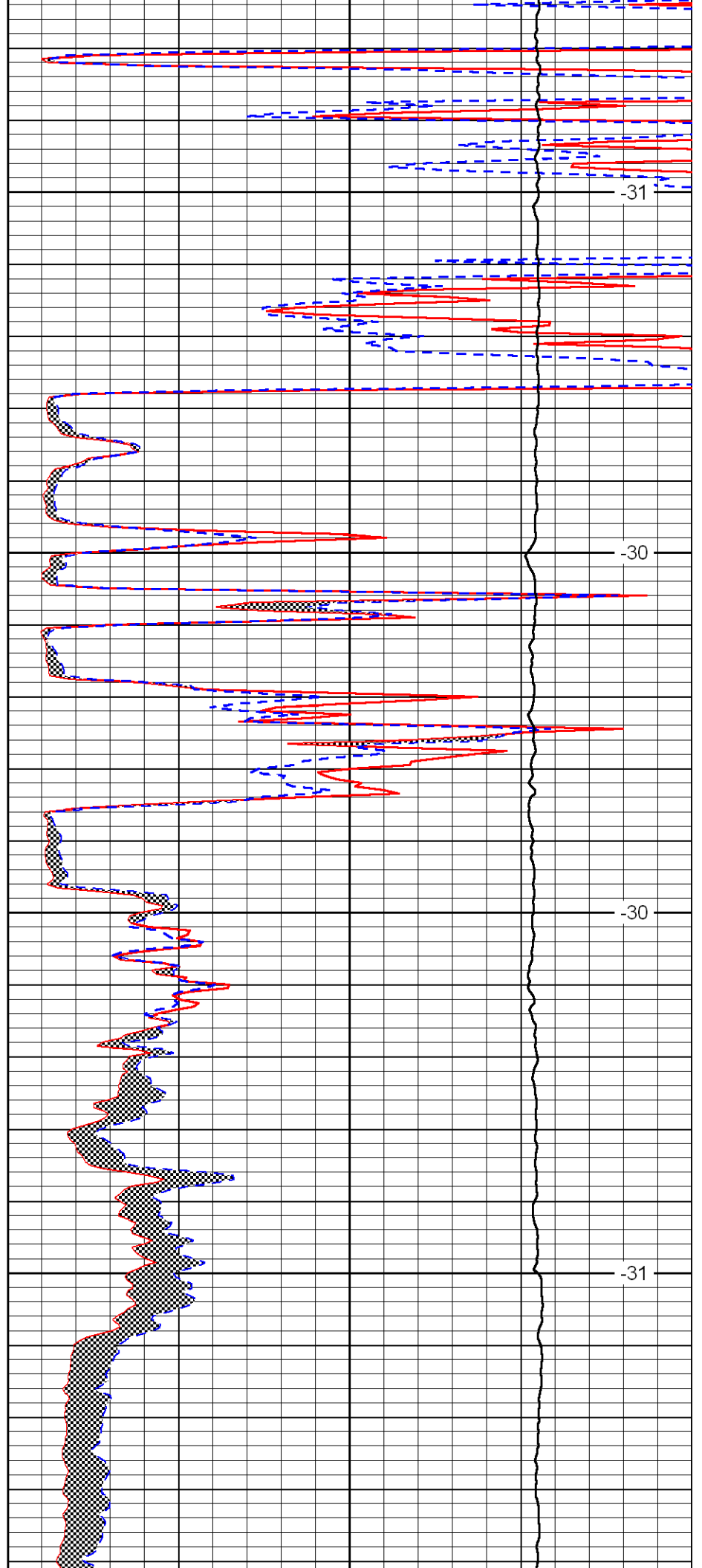


3550

3600

3650

3700

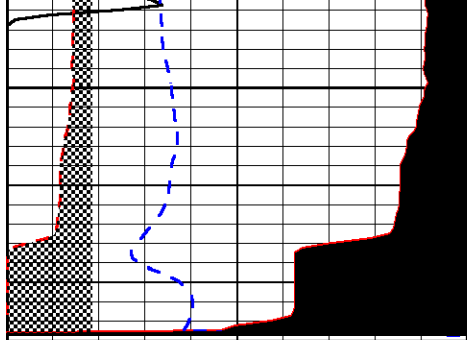


-31

-30

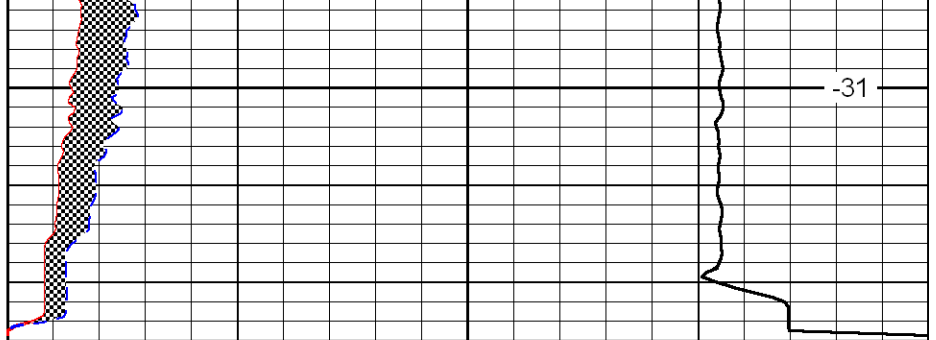
-30

-31



3750

0	Gamma Ray	150
6	MCAL (GAPI)	16
2.875	Mud Cake (GAPI)	7.875
-200	SP	0



-31

0	Micro Inverse 1 X 1	40
0	Micro Normal 2"	40
10000	Line Weight	0

LSPD