



SUPERIOR
Hays,
Kansas

MICRO
LOG

Company BLACK DIAMOND OIL, INC.
Well PETTIJOHN #1
Field WILDCAT
County ROOKS
State KANSAS

Company BLACK DIAMOND OIL, INC.
Well PETTIJOHN #1
Field WILDCAT
County ROOKS State KANSAS

Location: 1535' FNL & 1945' FWL
API # : 15-163-24012-0000
SEC 30 TWP 7S RGE 19W
Permanent Datum GROUND LEVEL Elevation 1987
Log Measured From KELLY BUSHING 5' A.G.L.
Drilling Measured From KELLY BUSHING
Elevation
K.B. 1992
D.F. 1990
G.L. 1987

Date	3/3/12		
Run Number	TWO		
Depth Driller	3441		
Depth Logger	3444		
Bottom Logged Interval	3442		
Top Log Interval	2500		
Casing Driller	8 5/8" @ 217		
Casing Logger	218		
Bit Size	7 7/8		
Type Fluid in Hole	CHEMICAL MUD	CHLORIDES 1000 PPM	
Density / Viscosity	9.1/45		
pH / Fluid Loss	10.5/8.0		
Source of Sample	FLOWLINE		
Rin @ Meas. Temp	1.2 @ 71F		
Rmf @ Meas. Temp	.90 @ 71F		
Rmc @ Meas. Temp	1.44 @ 71F		
Source of Rmf / Rmc	MEASURED		
Rin @ BHT	.76 @ 111F		
Time Circulation Stopped	2 HOURS		
Time Logger on Bottom			
Maximum Recorded Temperature	111F		
Equipment Number	680		
Location	HAYS, KS.		
Recorded By	JASON CAPPELLUCCI		
Witnessed By	JEFF LAWLER		

<<< Fold Here >>>

All interpretations are opinions based on inferences from electrical or other measurements and we cannot and do not guarantee the accuracy or correctness of any interpretation, and we shall not, except in the case of gross or willful negligence on our part, be liable or responsible for any loss, costs, damages, or expenses incurred or sustained by anyone resulting from any interpretation made by any of our officers, agents or employees. These interpretations are also subject to our general terms and conditions set out in our current Price Schedule.

Comments

THANK YOU FOR USING SUPERIOR WELL SERVICE (785) 628-6395
DIRECTIONS
WEBSTER DAM & HWY 24 - 3 W. TO RD 8 - 3/4 N. TO RD K.
3/4 W. - S. INTO

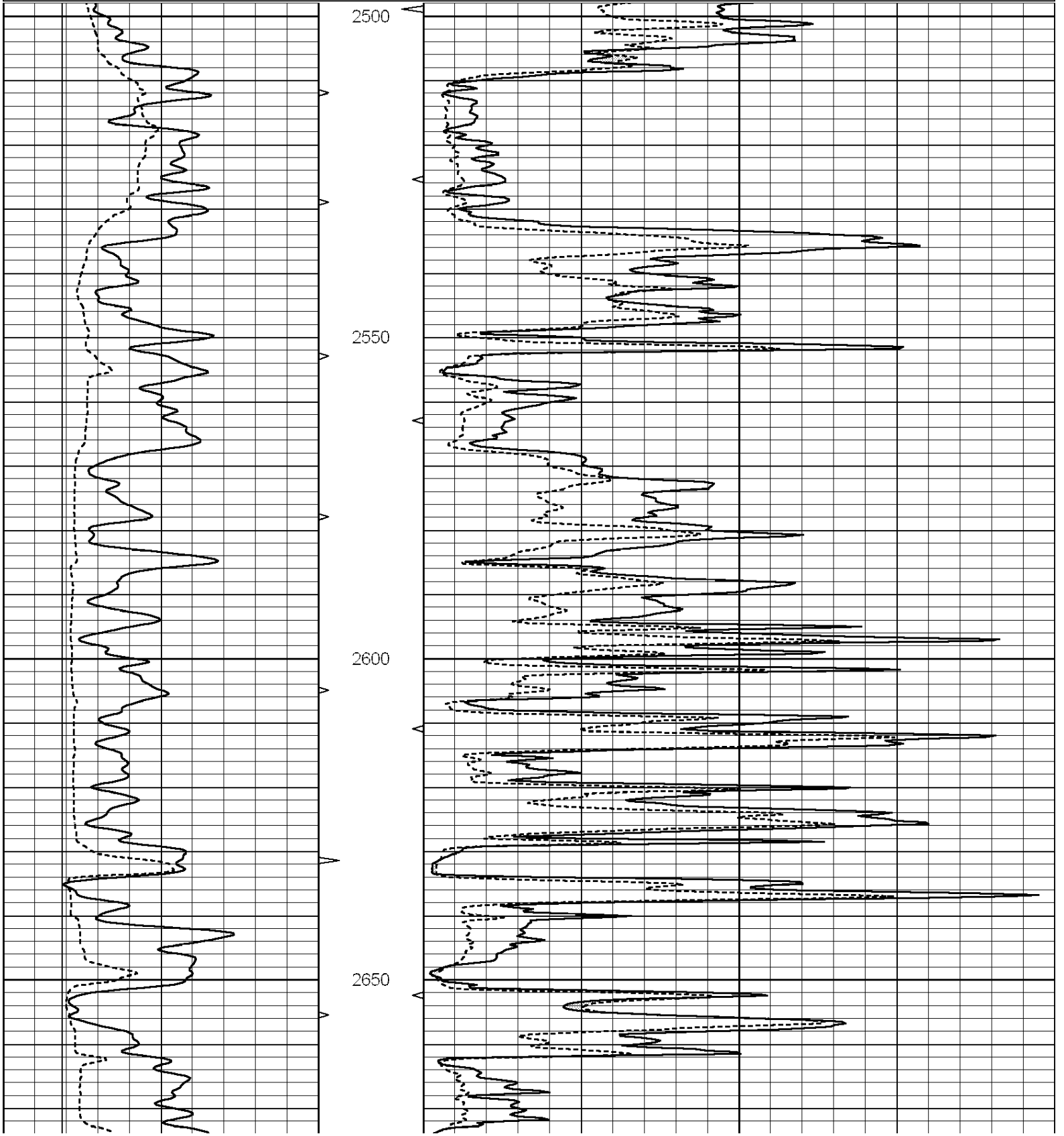


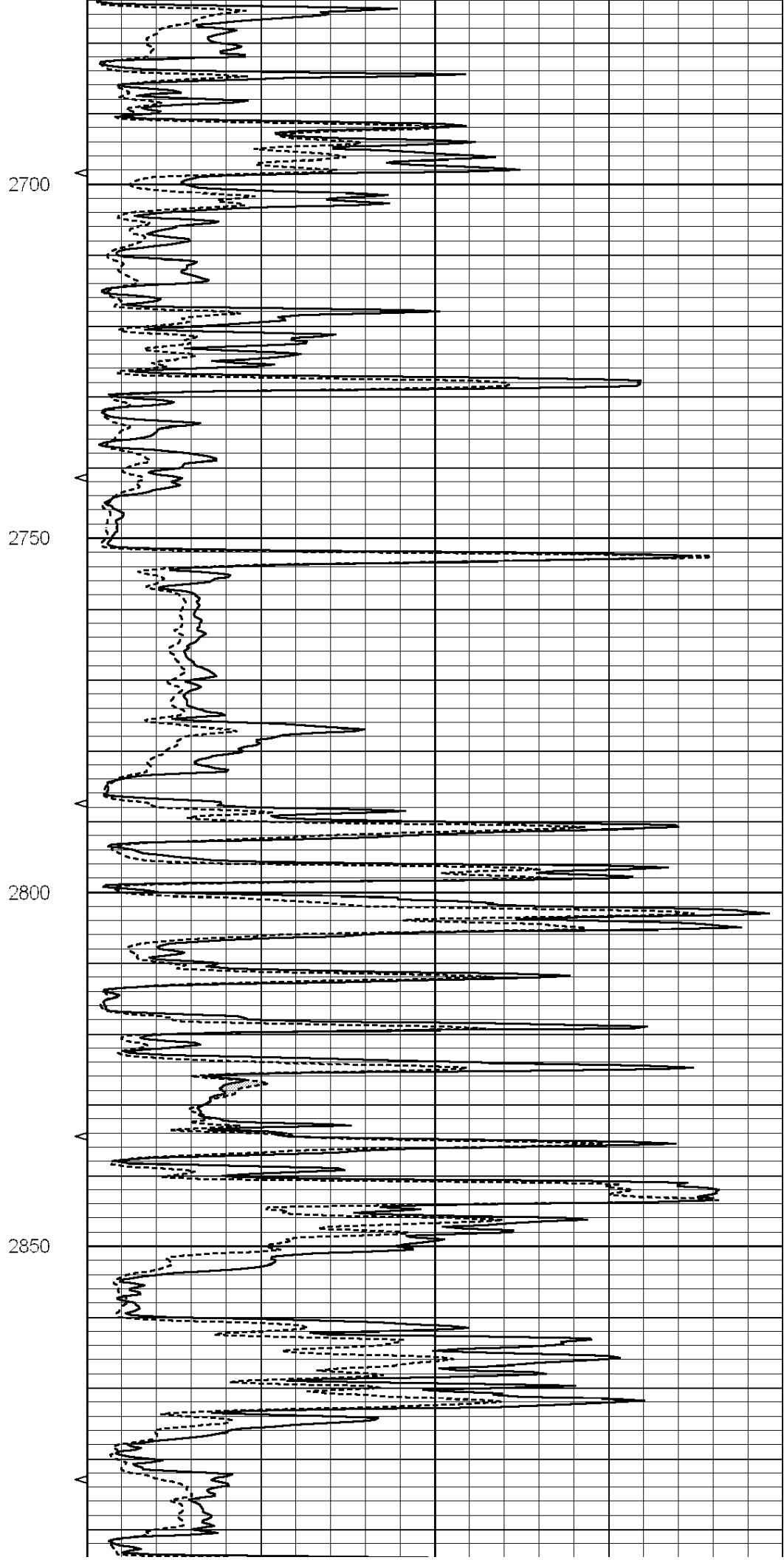
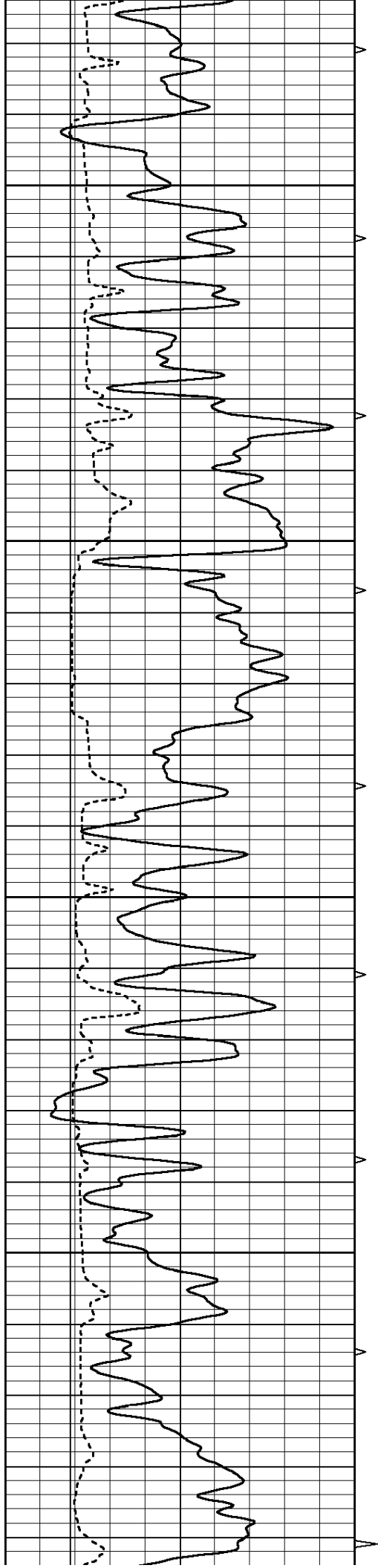
SUPERIOR
Hays,
Kansas

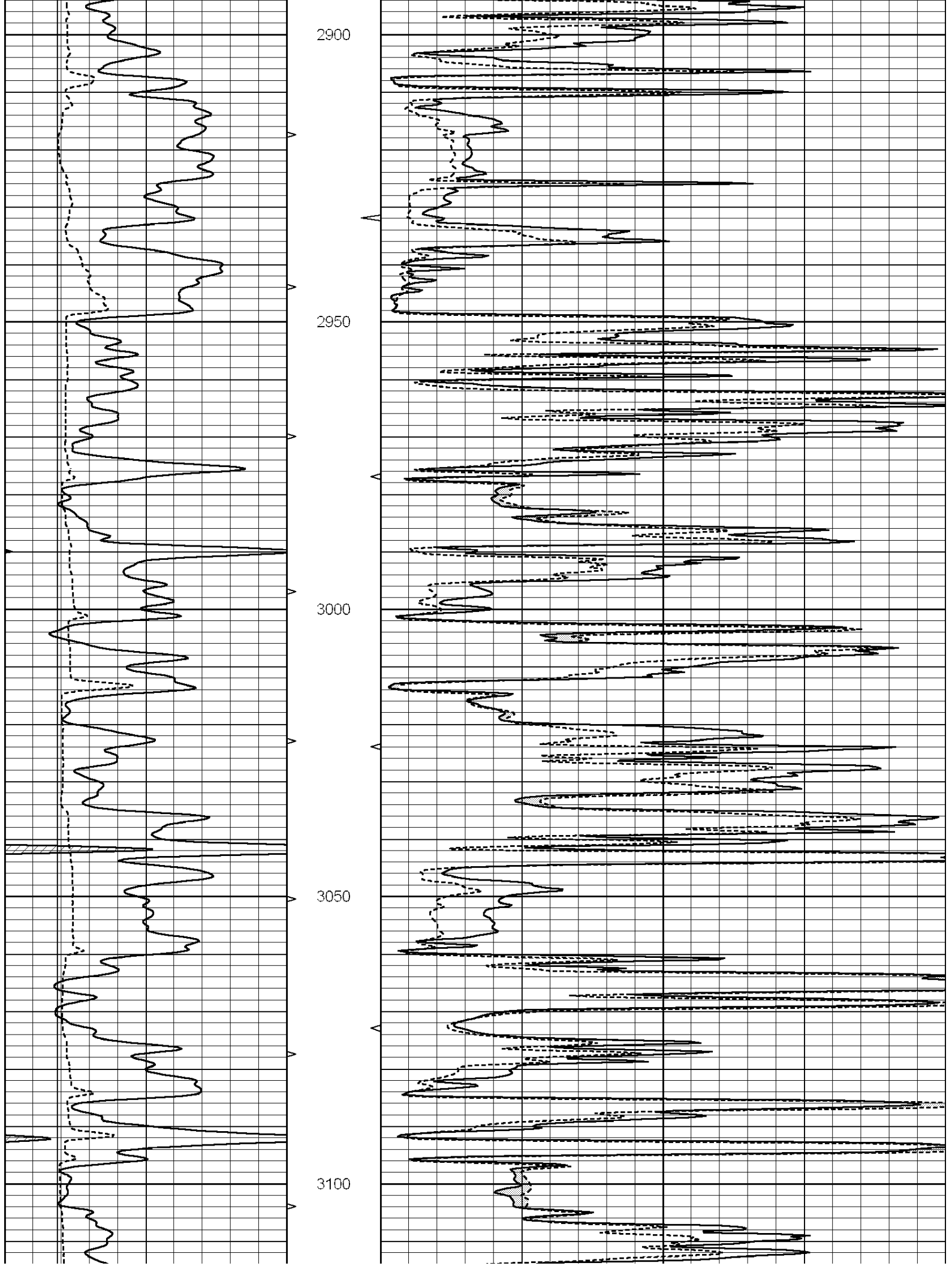
MAIN SECTION

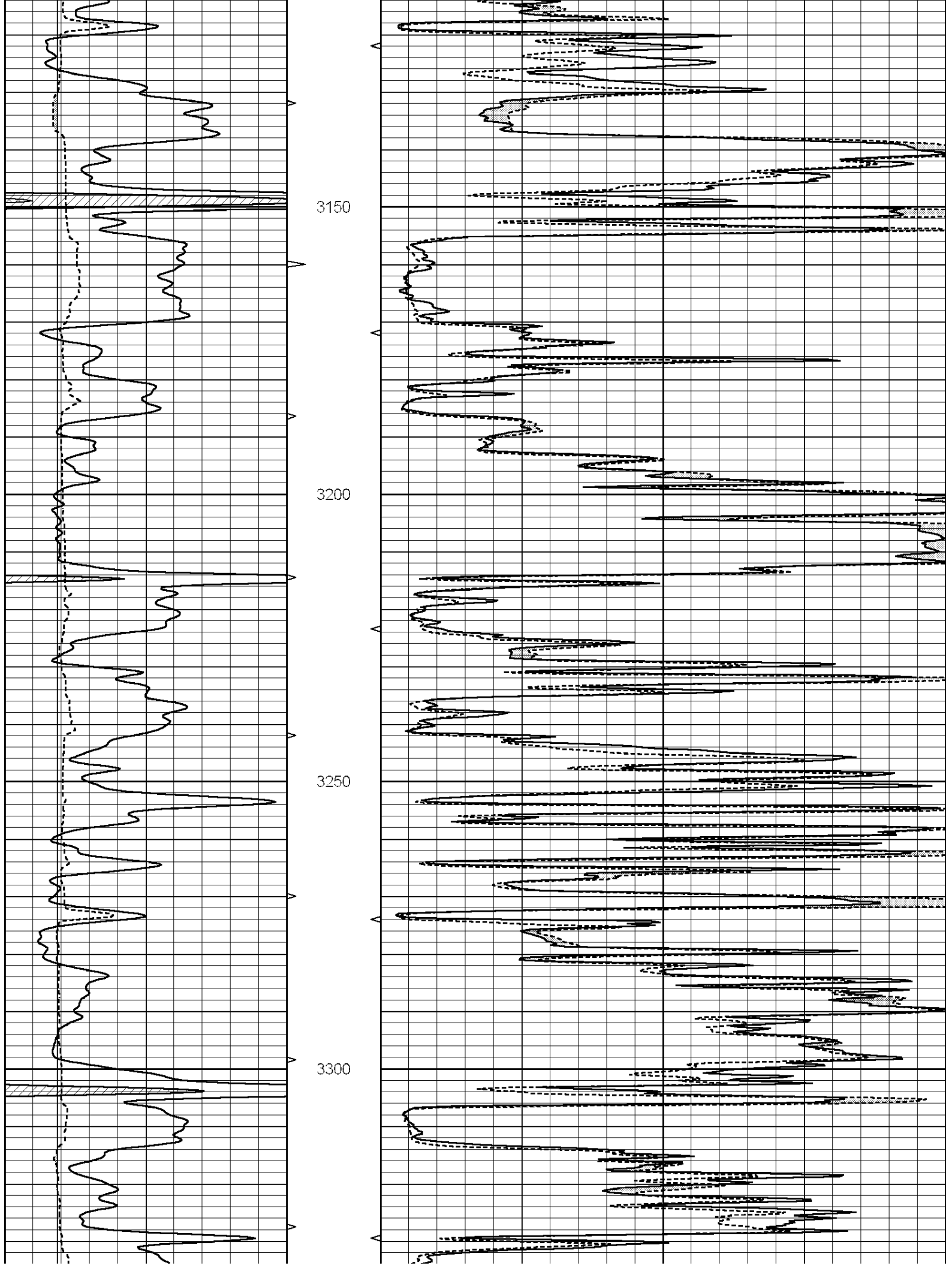
Database File: 008058ddn.db
 Dataset Pathname: pass6.1
 Presentation Format: _micro
 Dataset Creation: Sat Mar 03 15:25:23 2012 by Calc Open-Cased 090629
 Charted by: Depth in Feet scaled 1:240

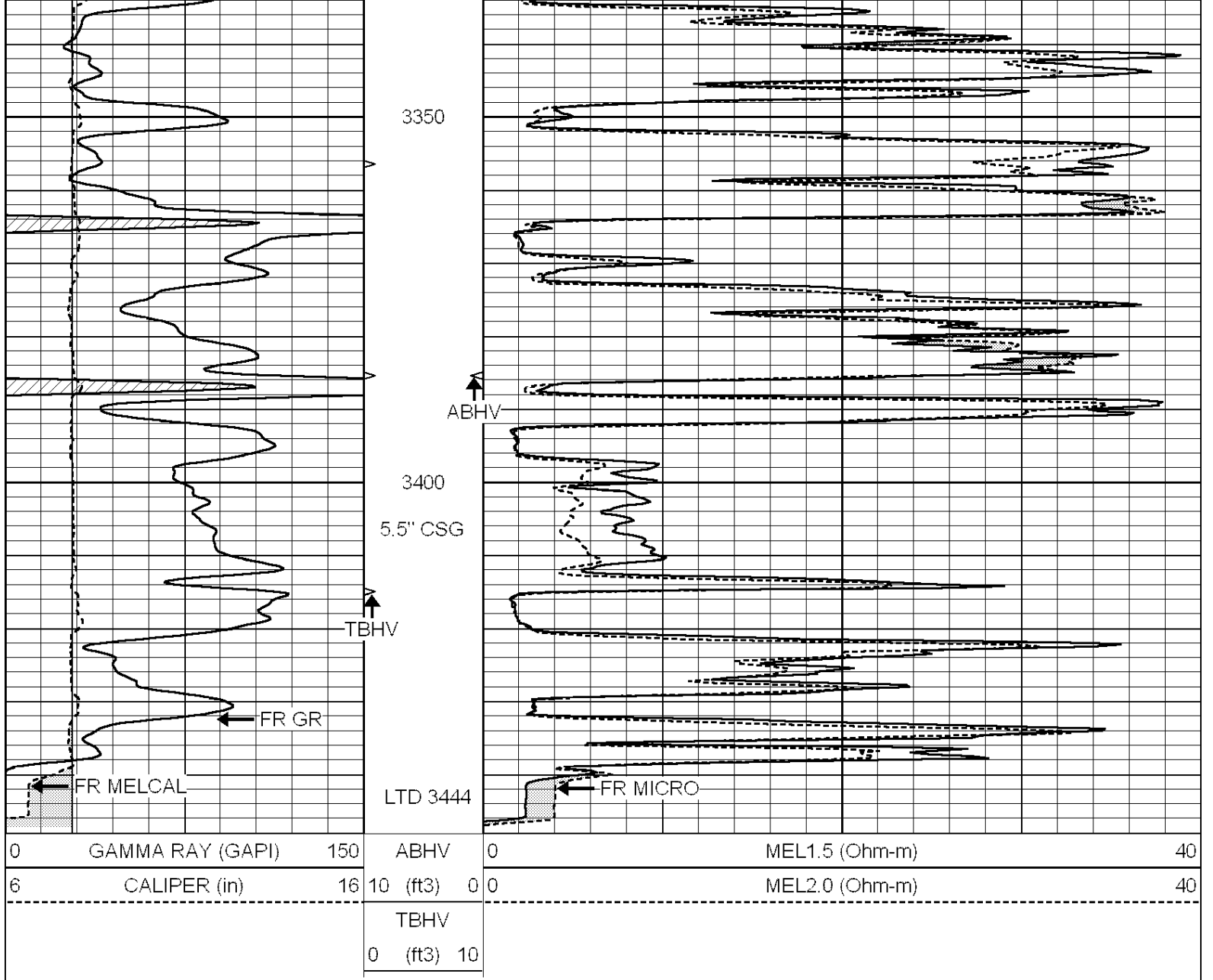
0	GAMMA RAY (GAPI)	150	ABHV	0	MEL1.5 (Ohm-m)	40
6	CALIPER (in)	16	10 (ft3)	0 0	MEL2.0 (Ohm-m)	40
			TBHV			
			0 (ft3)	10		









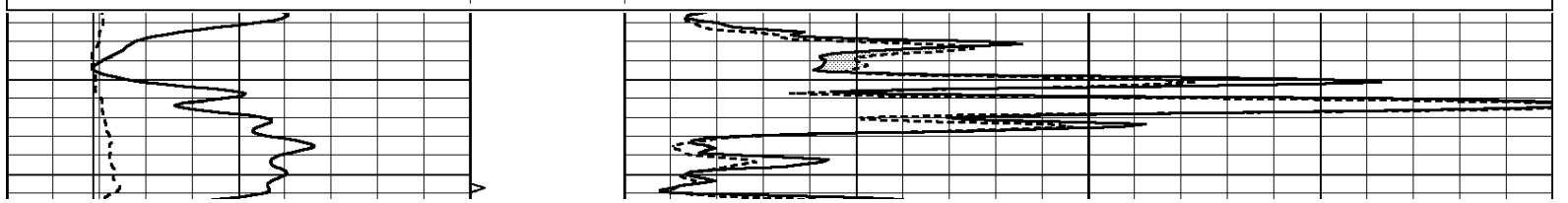


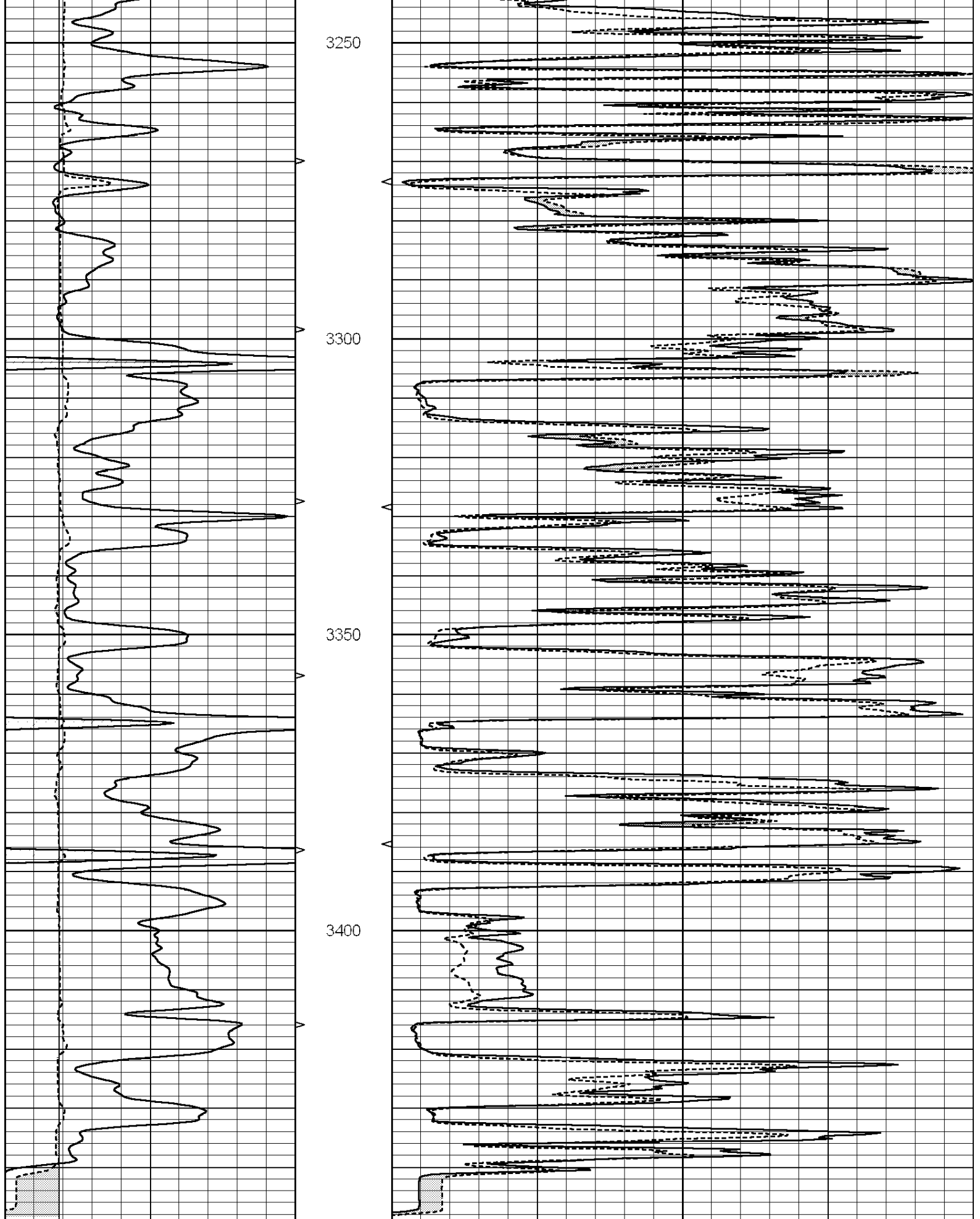
SUPERIOR
Hays,
Kansas

REPEAT SECTION

Database File: 008058ddn.db
 Dataset Pathname: pass5.1
 Presentation Format: _micro
 Dataset Creation: Sat Mar 03 15:12:08 2012 by Calc Open-Cased 090629
 Charted by: Depth in Feet scaled 1:240

0	GAMMA RAY (GAPI)	150	ABHV	0	MEL1.5 (Ohm-m)	40
6	CALIPER (in)	16	10 (ft3) 0	0	MEL2.0 (Ohm-m)	40
			TBHV			
			0 (ft3) 10			





0	GAMMA RAY (GAPI)	150	ABHV	0	MEL1.5 (Ohm-m)	40
6	CALIPER (in)	16	10 (ft3)	0	MEL2.0 (Ohm-m)	40
			TBHV			

Calibration Report

Database File: 008058ddn.db
 Dataset Pathname: pass5.1
 Dataset Creation: Sat Mar 03 15:12:08 2012 by Calc Open-Cased 090629

MICRO Calibration Report

Serial Number: MICRO6
 Tool Model: PROBE
 Performed: Wed Dec 14 02:35:39 2011

Caliper Calibration: Gain=5.211 Offset=0.260

	Low Cal	High Cal
References	8.000	14.000
Readings	1.178	2.330

1.5" Calibration: Gain=30.075 Offset=-1.300

	Low Cal	High Cal
References	0.000	20.000
Readings	0.004	1.196

2" Calibration: Gain=25.041 Offset=-0.500

	Low Cal	High Cal
References	0.000	20.000
Readings	0.006	0.913

Gamma Ray Calibration Report

Serial Number: #8
 Tool Model: OPEN
 Performed: Mon Jun 13 16:56:43 2011

Calibrator Value: 150.0 GAPI

Background Reading:	0.0	cps
Calibrator Reading:	175.0	cps

Sensitivity: 0.8371 GAPI/cps