



DIGITAL LOG (785) 625-3858

Dual Induction Log

15-015-23.934-00-00

API No.

Company Vess Oil Corporation

Well Wilson "A" No.444

Field El Dorado

County Butler State Kansas

Location 2176' FNL & 2310' FWL

Sec: 9 Twp: 25S Rge: 5E

Permanent Datum Ground Level Elevation 1357

Log Measured From Kelly Bushing 6 Ft. Above Perm. Datum

Drilling Measured From Kelly Bushing

Other Services
CNL/CDL
MEL
Elevation
K.B. 1363
D.F.
G.L. 1357

Date 4/4/2012

Run Number One

Depth Driller 2488

Depth Logger 2488

Bottom Logged Interval 2487

Top Log Interval 0

Casing Driller 8.625 @ 257

Casing Logger 259

Bit Size 7.875

Type Fluid in Hole Chemical

Salinity,ppm CL 1,300

Density / Viscosity 9.3 47

pH / Fluid Loss 9.5 8.8

Source of Sample Flowline

Rm @ Meas. Temp 1.95 @ 64

Rmf @ Meas. Temp 1.46 @ 64

Rmc @ Meas. Temp 2.63 @ 64

Source of Rmf / Rmc Charts

Rm @ BHT 1.24 @ 101

Operating Rig Time 4 1/2 Hours

Max Rec. Temp. F 101

Equipment Number 17

Location Hays

Recorded By C. Desaire

Witnessed By Roger Martin

<<< Fold Here >>>

All interpretations are opinions based on inferences from electrical or other measurements and we cannot and do not guarantee the accuracy or correctness of any interpretation, and we shall not, except in the case of gross or willful negligence on our part, be liable or responsible for any loss, costs, damages, or expenses incurred or sustained by anyone resulting from any interpretation made by any of our officers, agents or employees. These interpretations are also subject to our general terms and conditions set out in our current Price Schedule.

Comments

Thank you for using Log-Tech, Inc.
(785) 625-3858

East of Potwin KS to 40 Rd,
2 E, 1/4 N, E Into on first right

Database File: c:\warrior\data\vess_wilson a no.444\vesshd3.db
Dataset Pathname: dil/vessstk
Presentation Format: dil2in
Dataset Creation: Wed Apr 04 06:57:32 2012
Charted by: Depth in Feet scaled 1:600

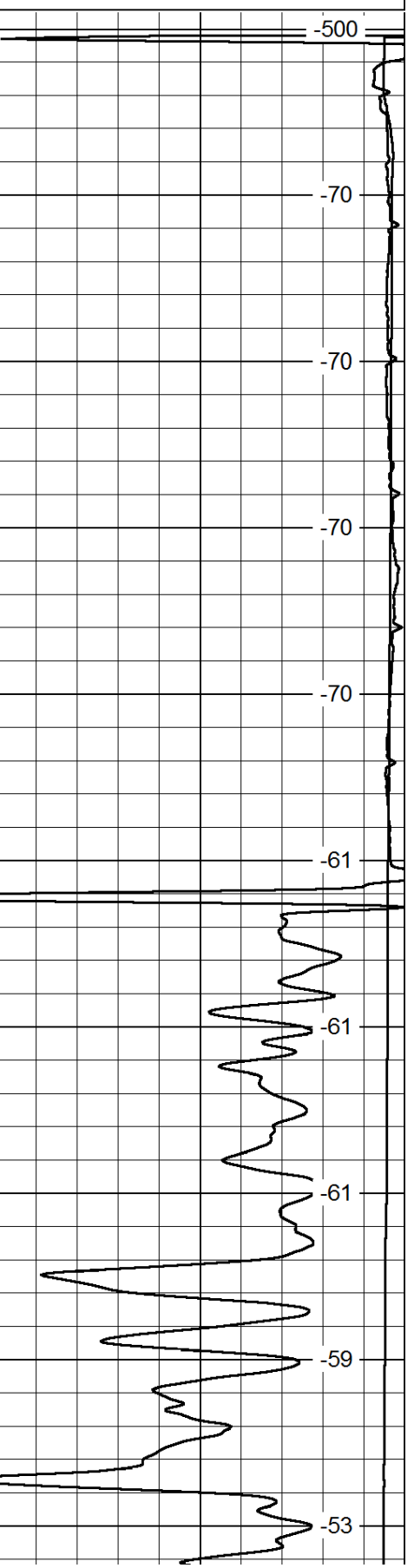
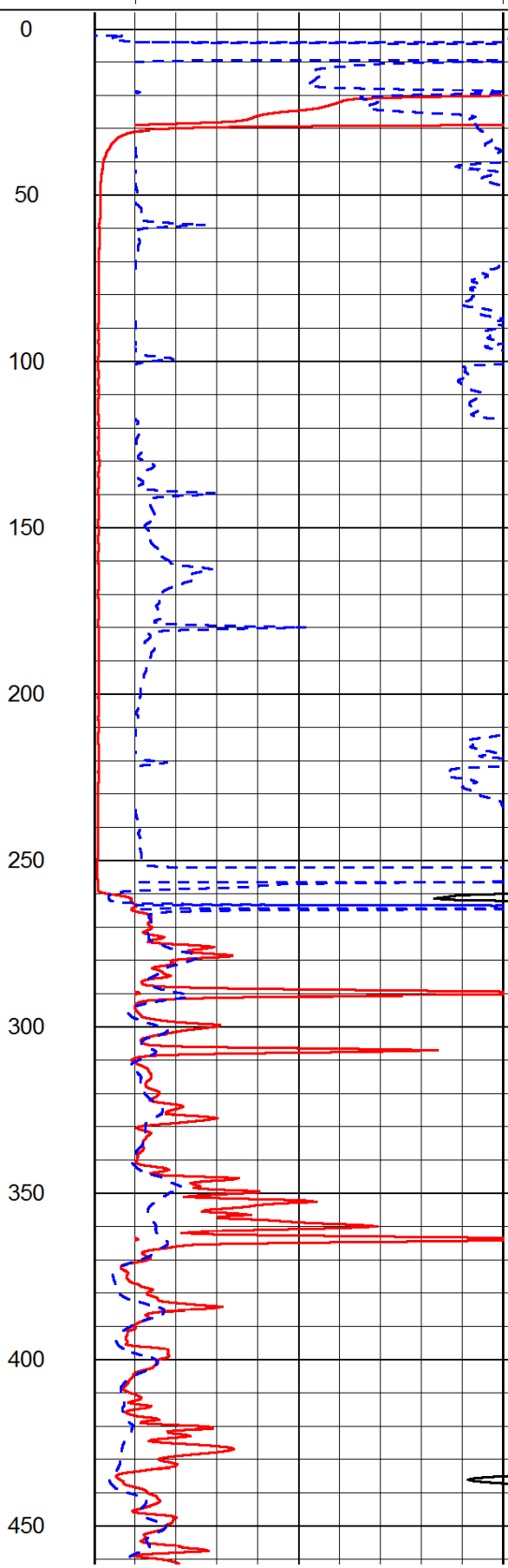
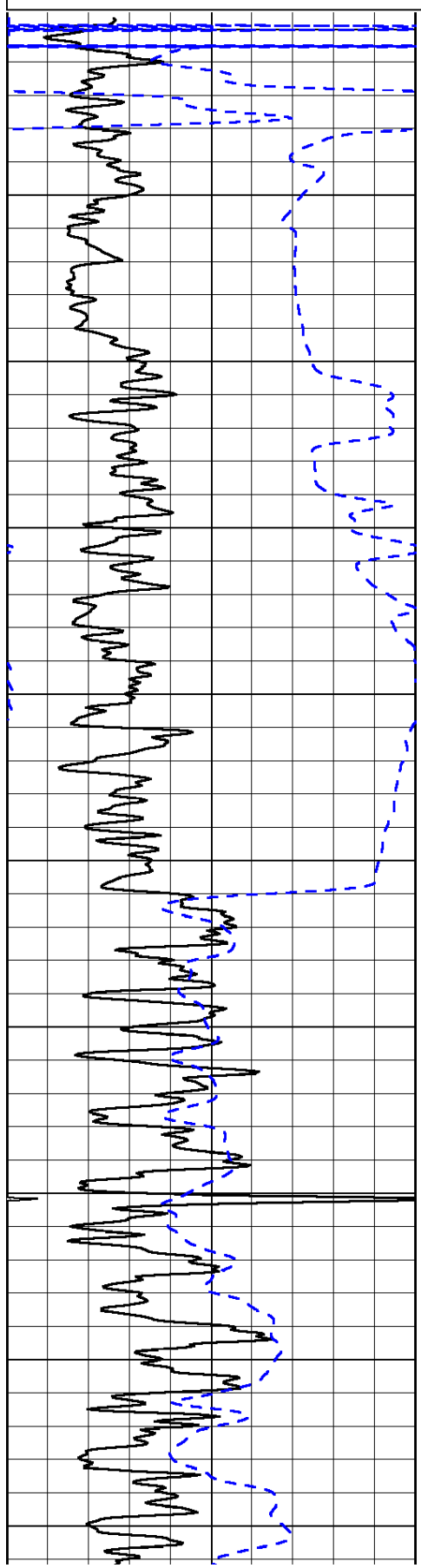
0	Gamma Ray	150
-200	SP (mV)	0

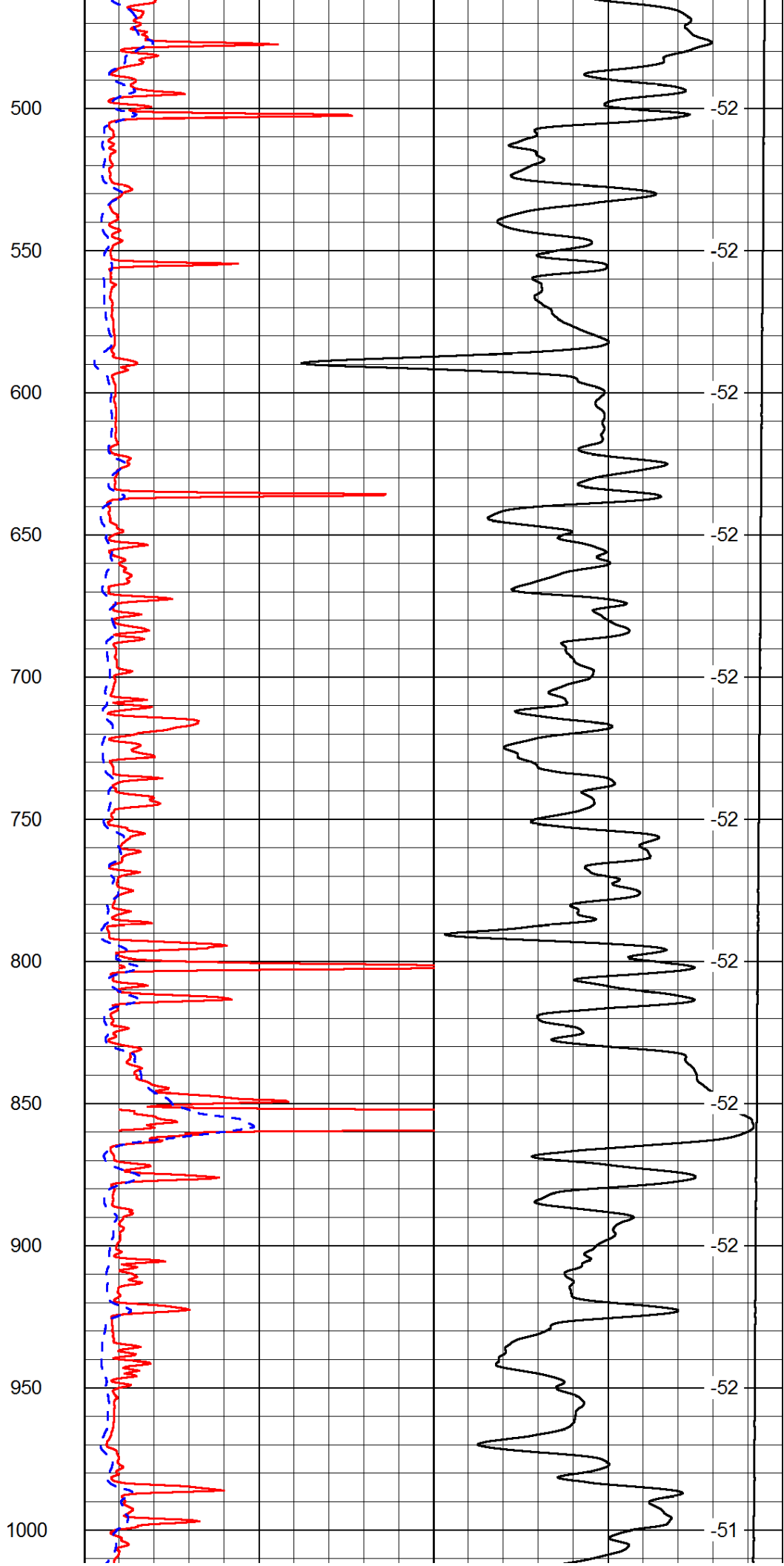
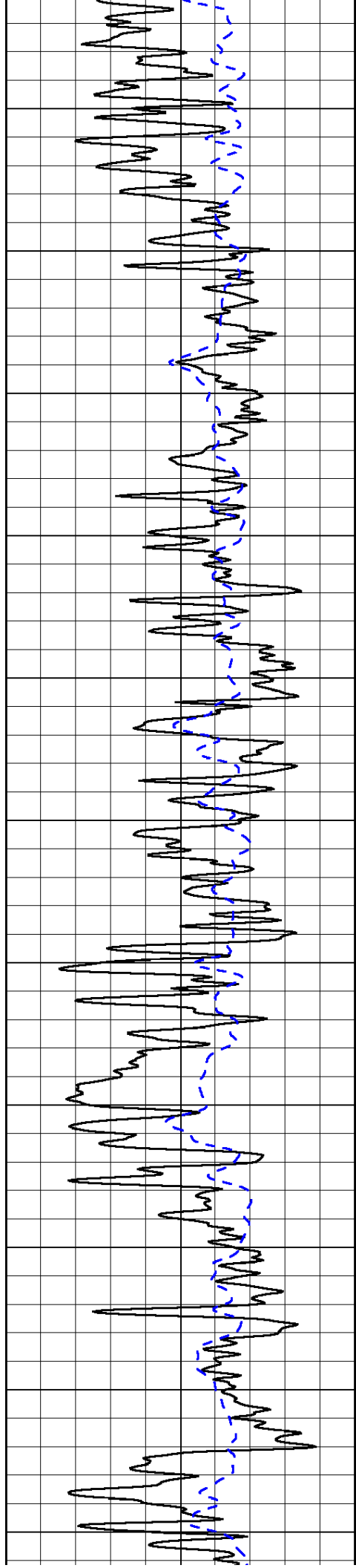
0	Shallow Resistivity	50
0	Deep Resistivity	50

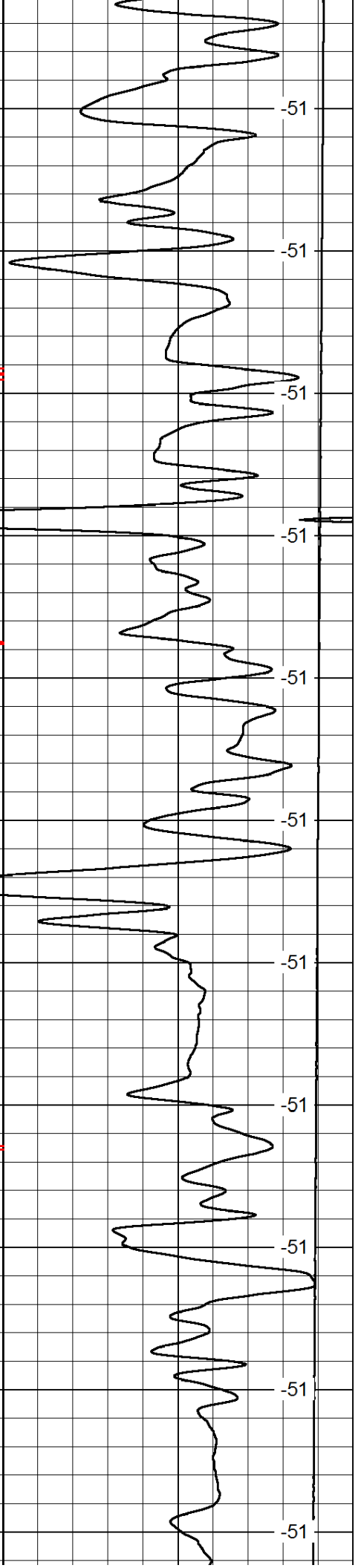
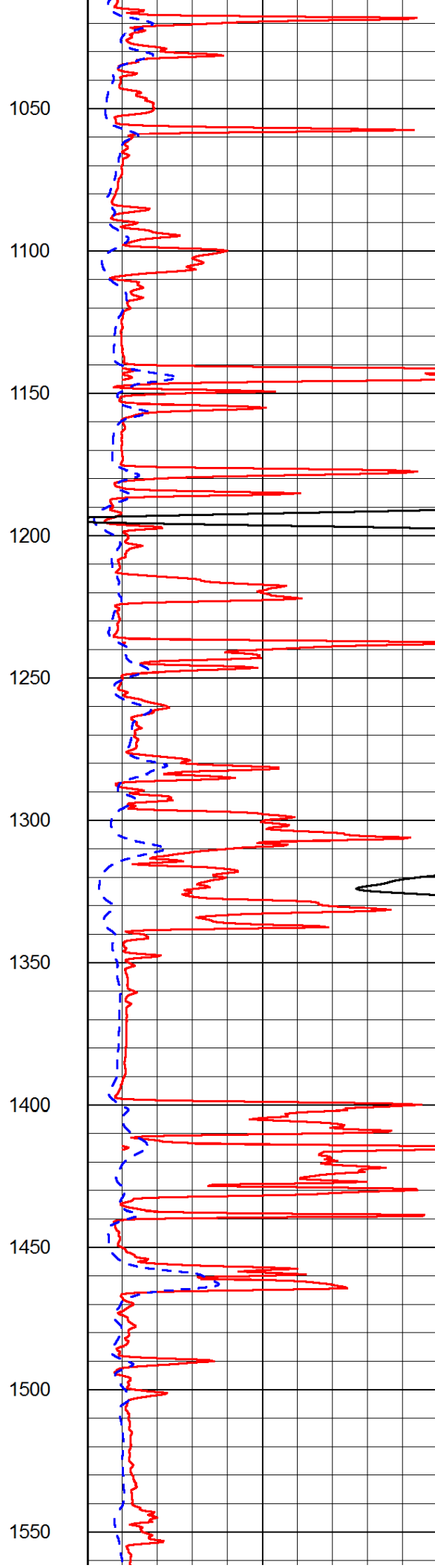
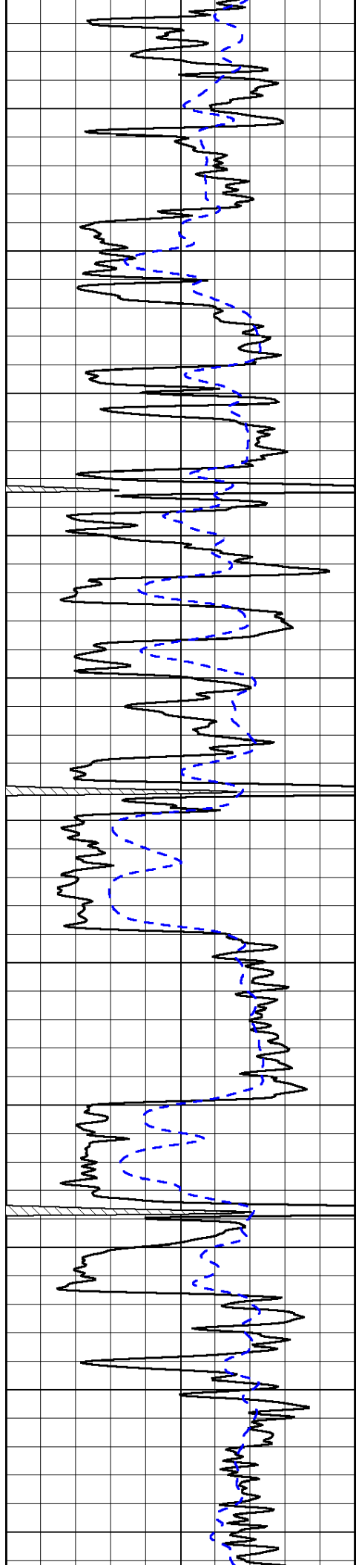
LSPD

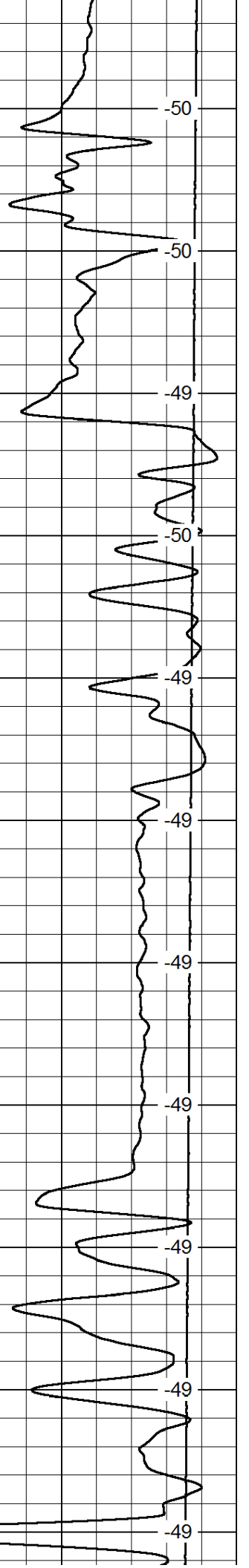
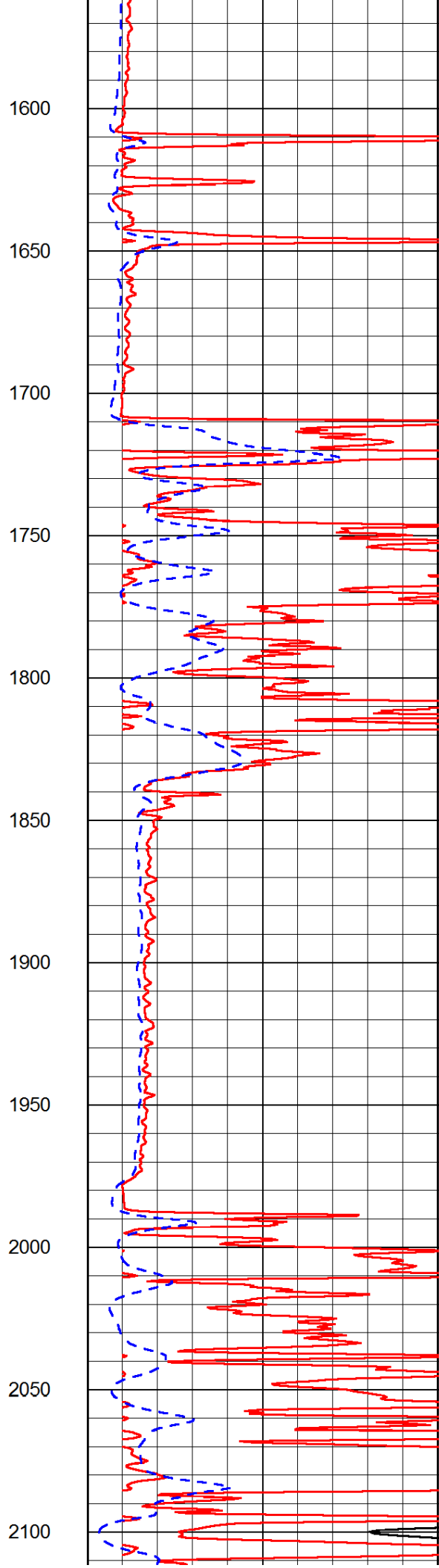
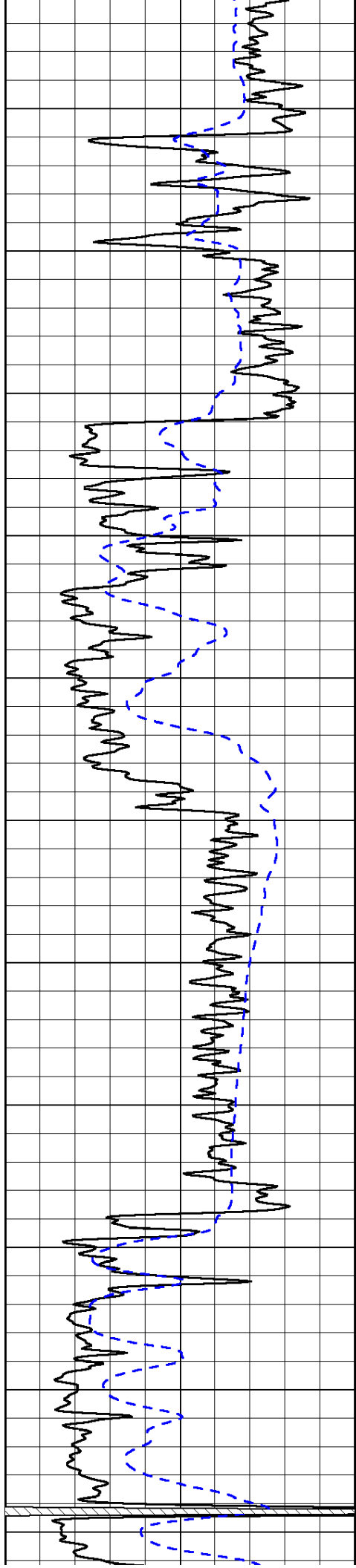
1000	Conductivity	0
15000	Line Tension	0

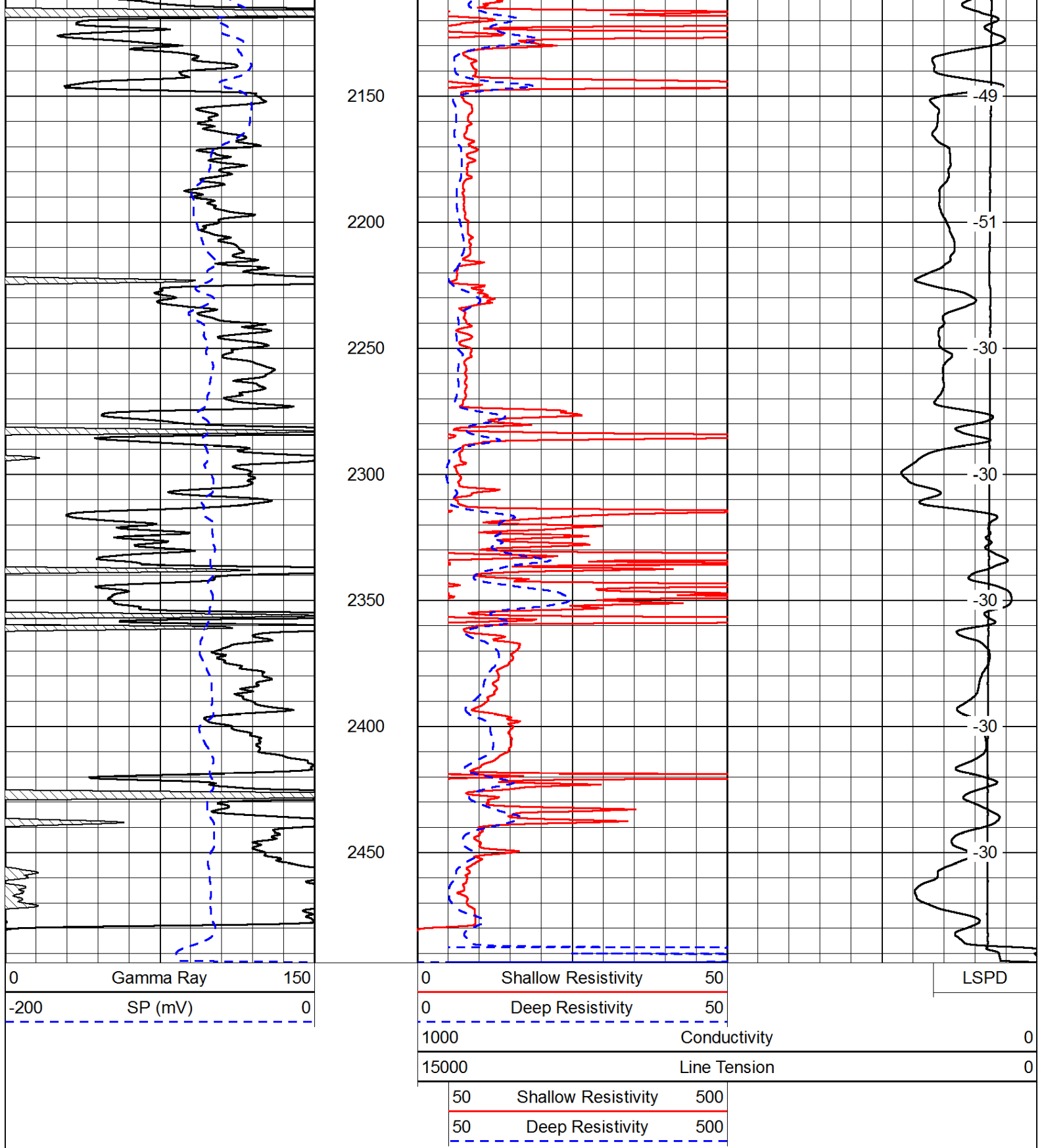
50	Shallow Resistivity	500
50	Deep Resistivity	500





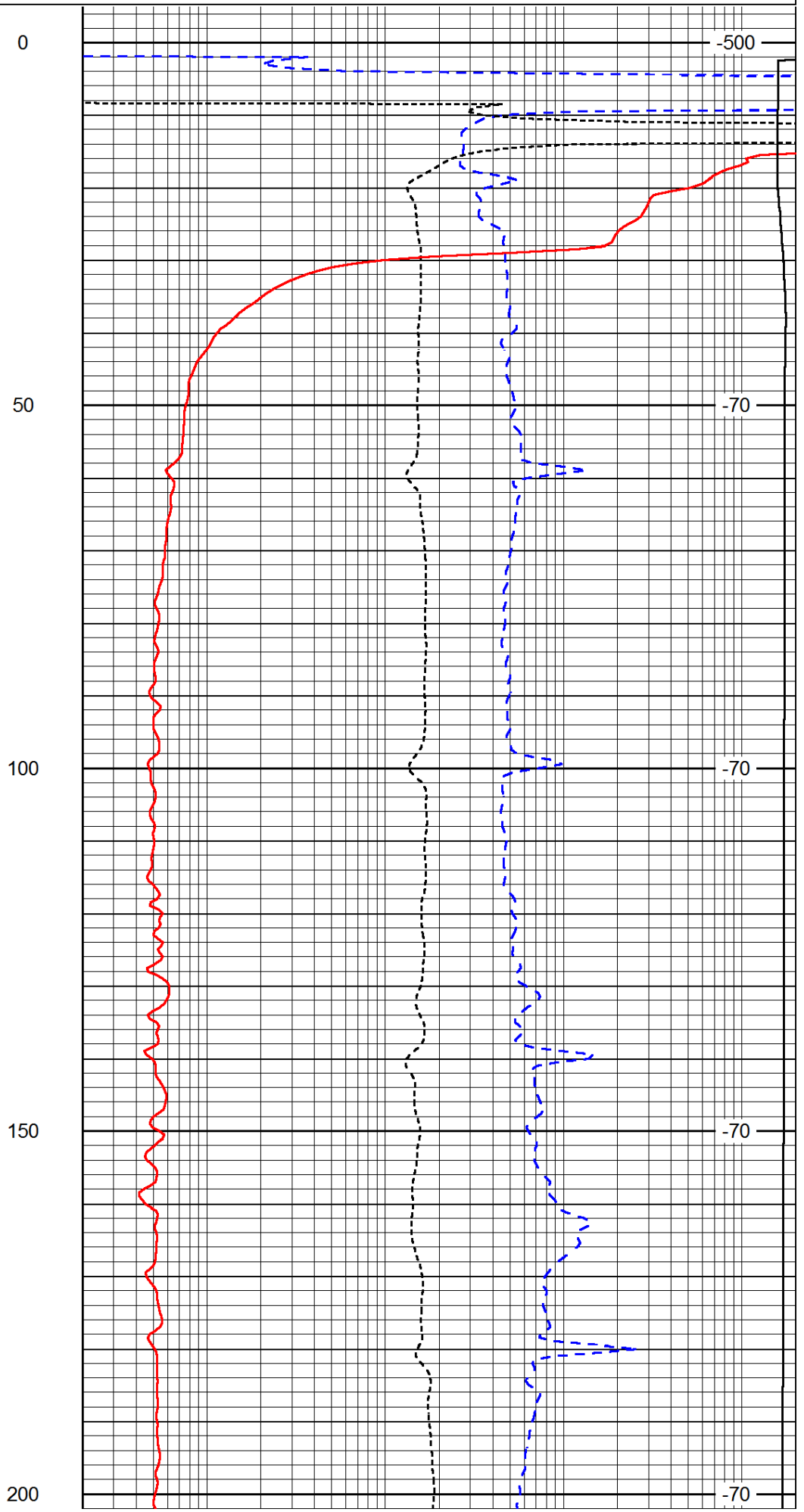
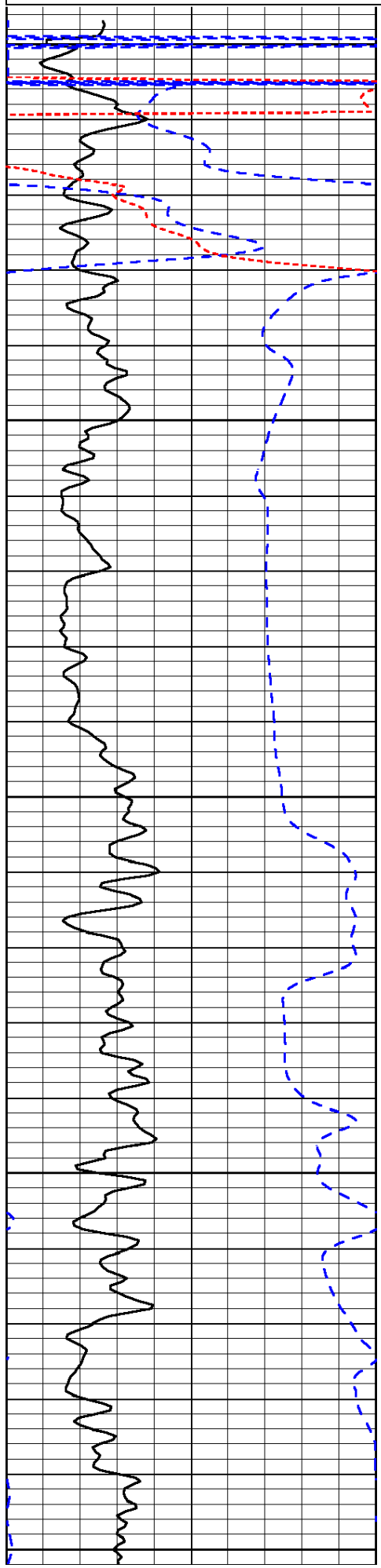


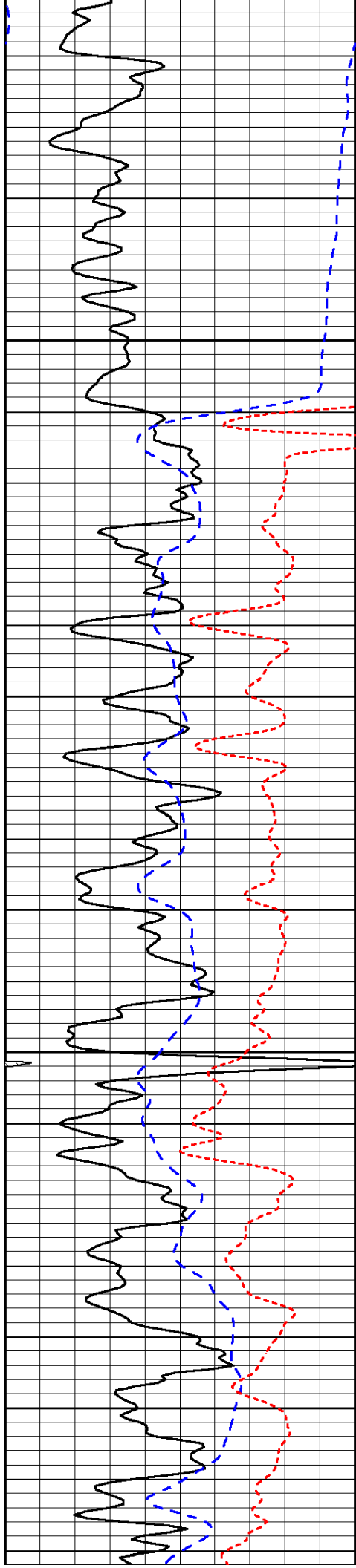




Database File: c:\warrior\data\vess_wilson a no.444\vesshd3.db
 Dataset Pathname: dil/vessstk
 Presentation Format: dil
 Dataset Creation: Wed Apr 04 06:57:32 2012
 Charted by: Depth in Feet scaled 1:240

0	Gamma Ray	150	0.2	Deep Resistivity	2000
-200	SP (mV)	0	0.2	Medium Resistivity	2000
-160	R _{xo} / Rt	40	0.2	Shallow Resistivity	2000



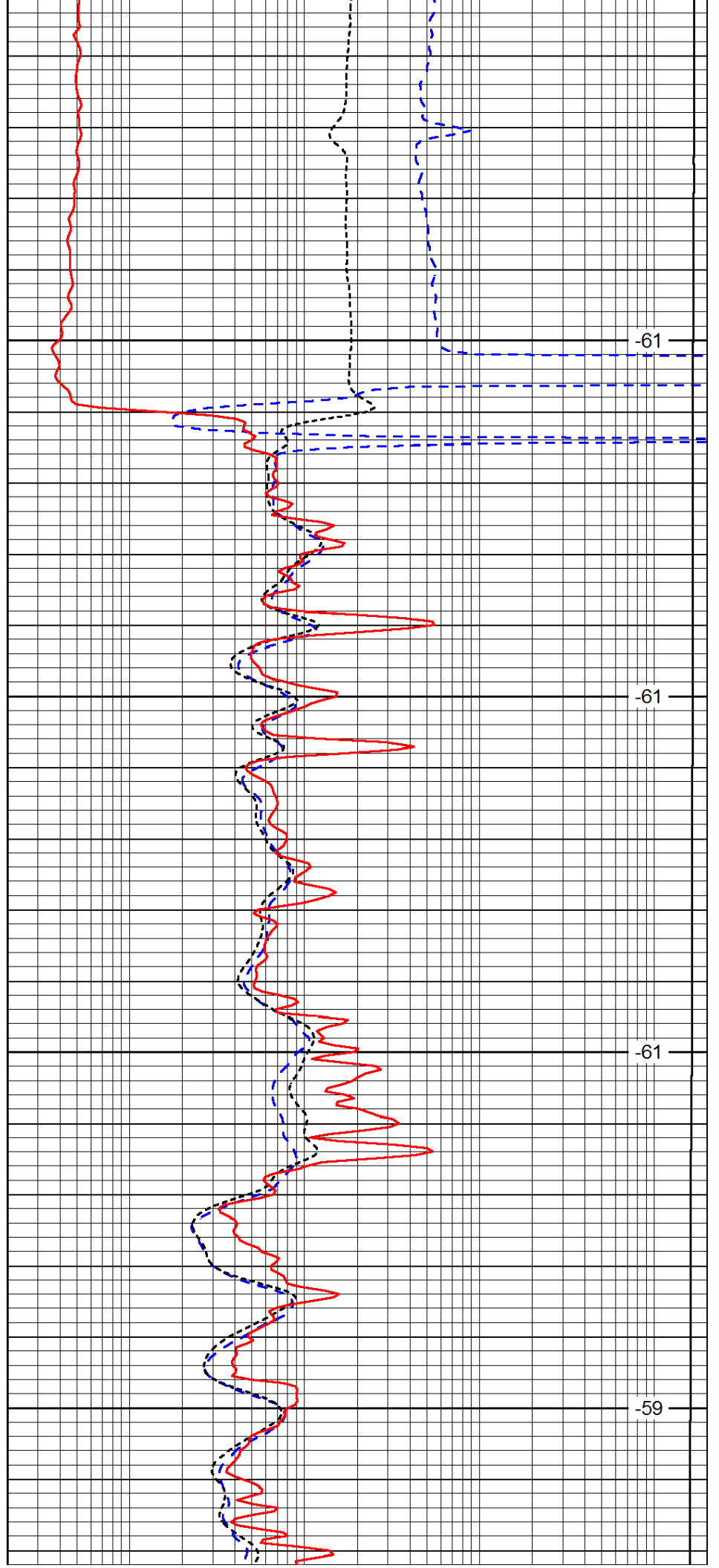


250

300

350

400

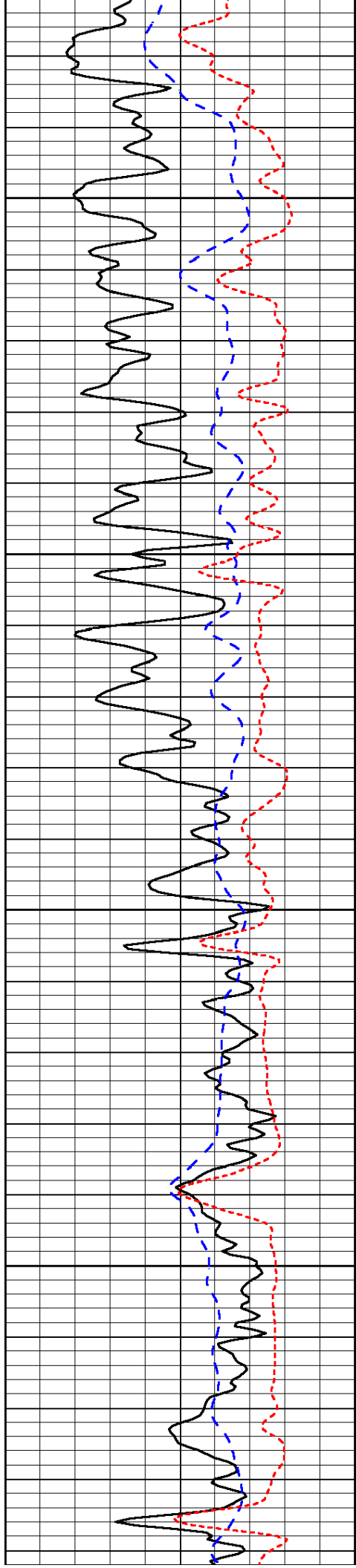


-61

-61

-61

-59

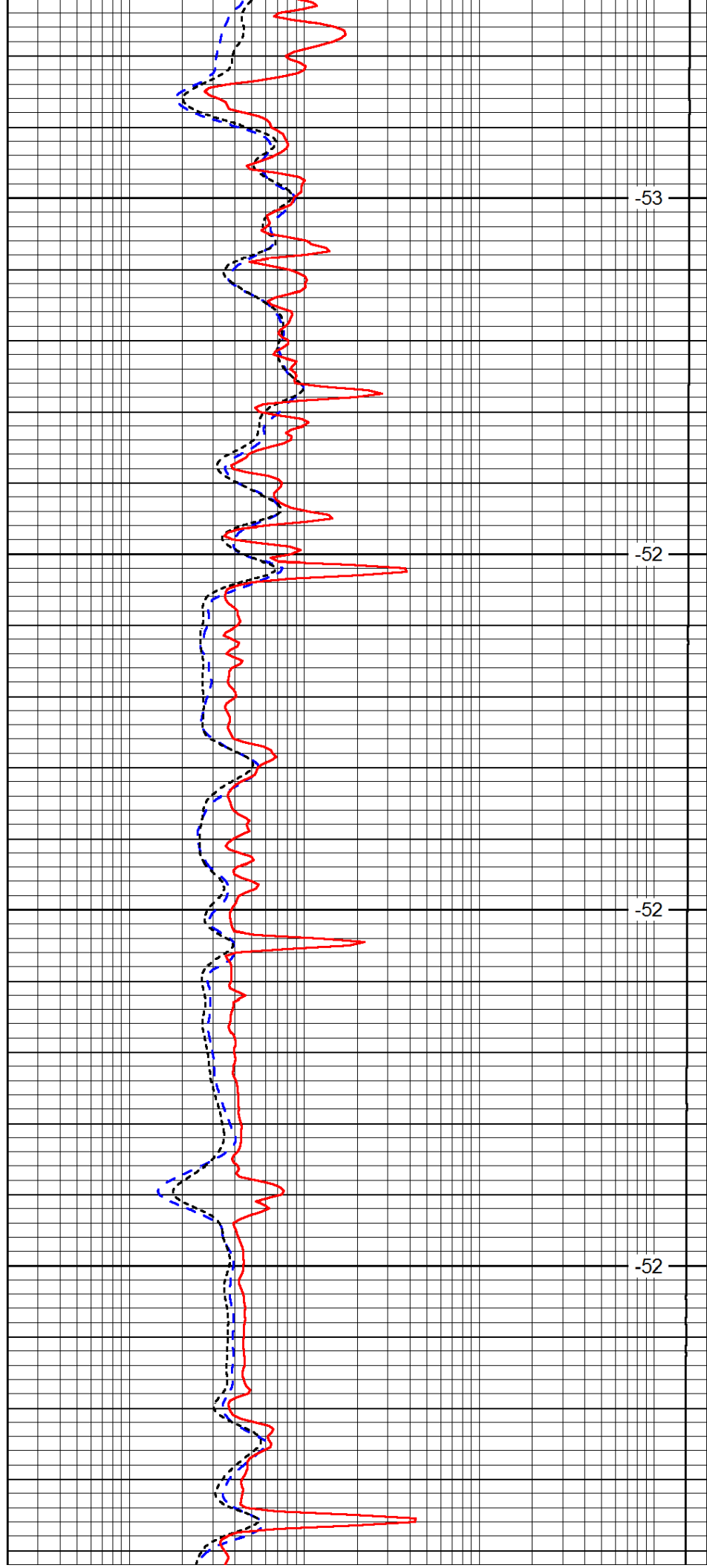


450

500

550

600

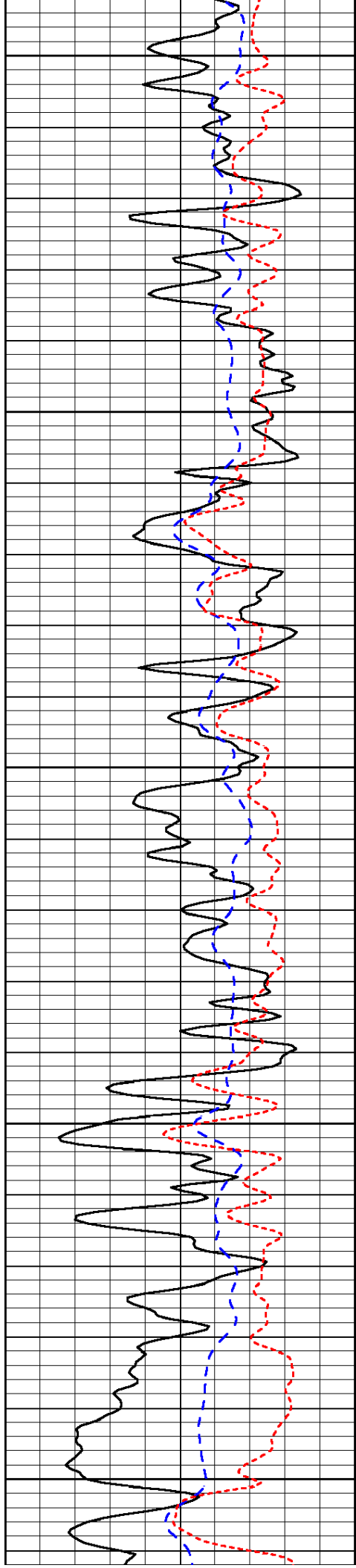


-53

-52

-52

-52



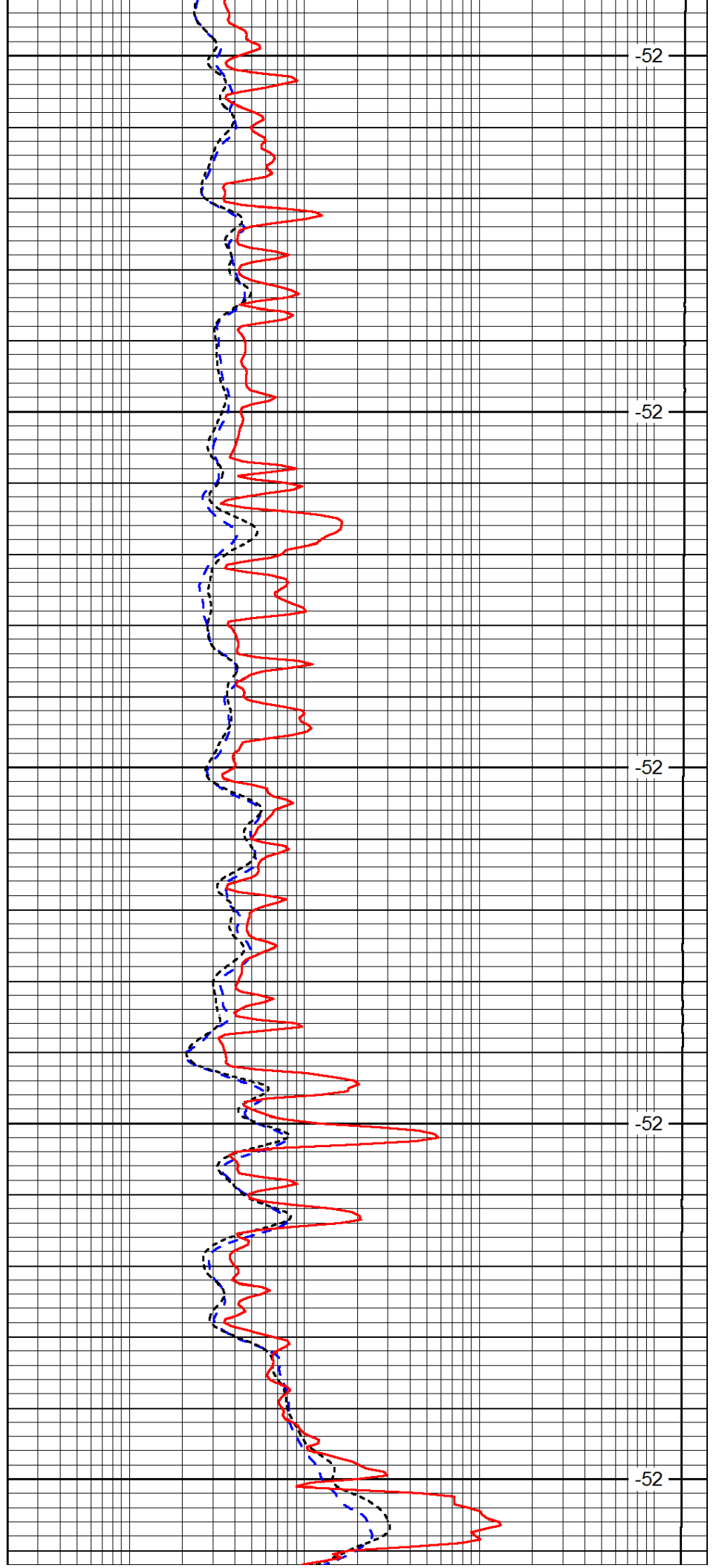
650

700

750

800

850



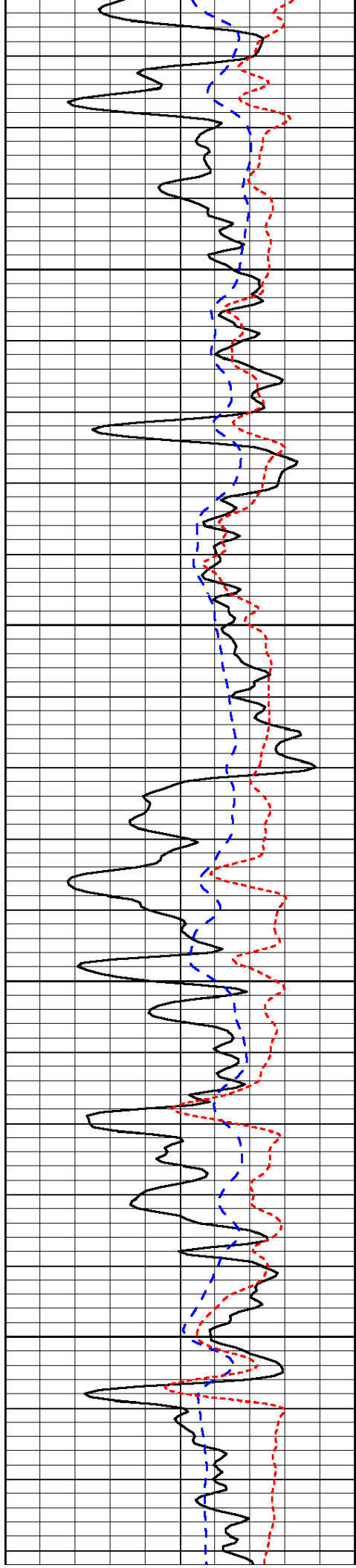
-52

-52

-52

-52

-52

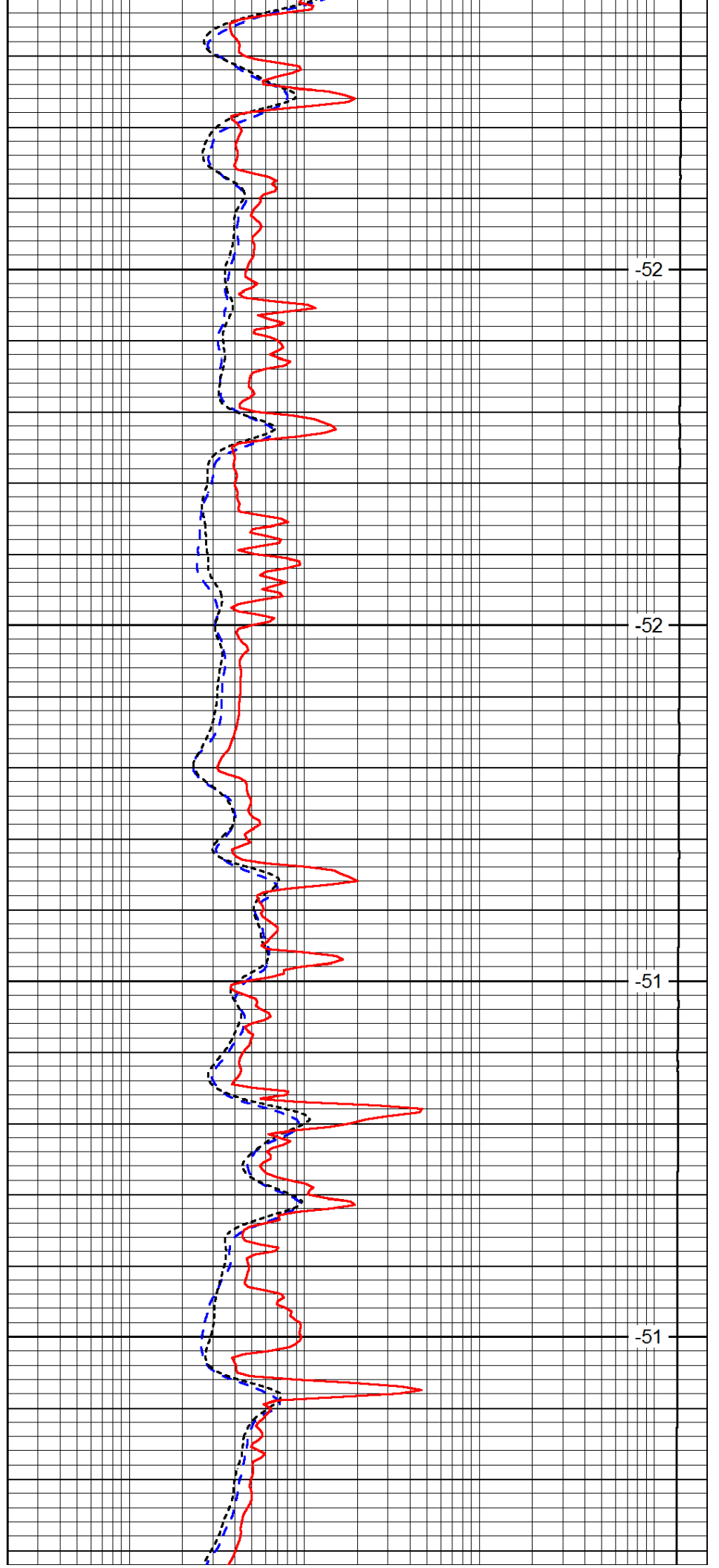


900

950

1000

1050

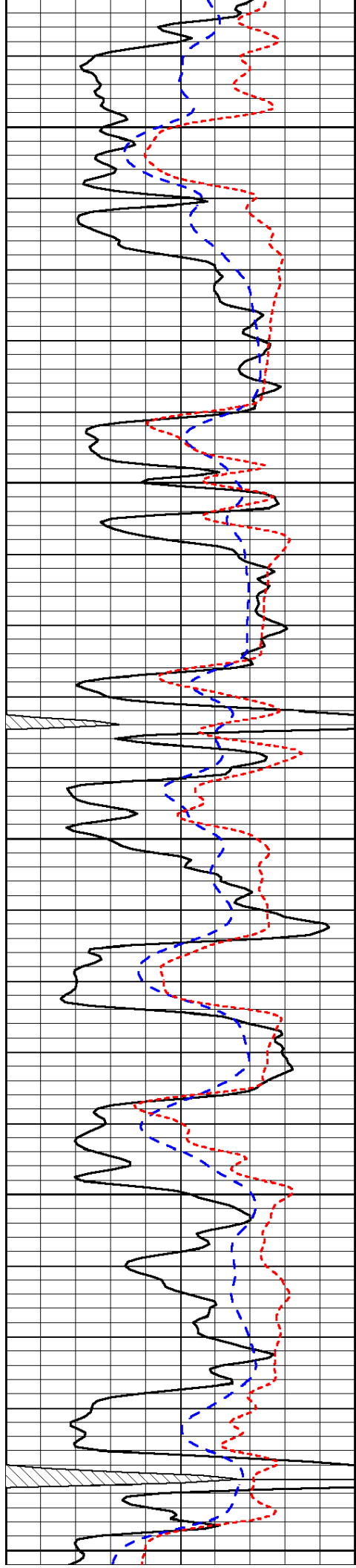


-52

-52

-51

-51



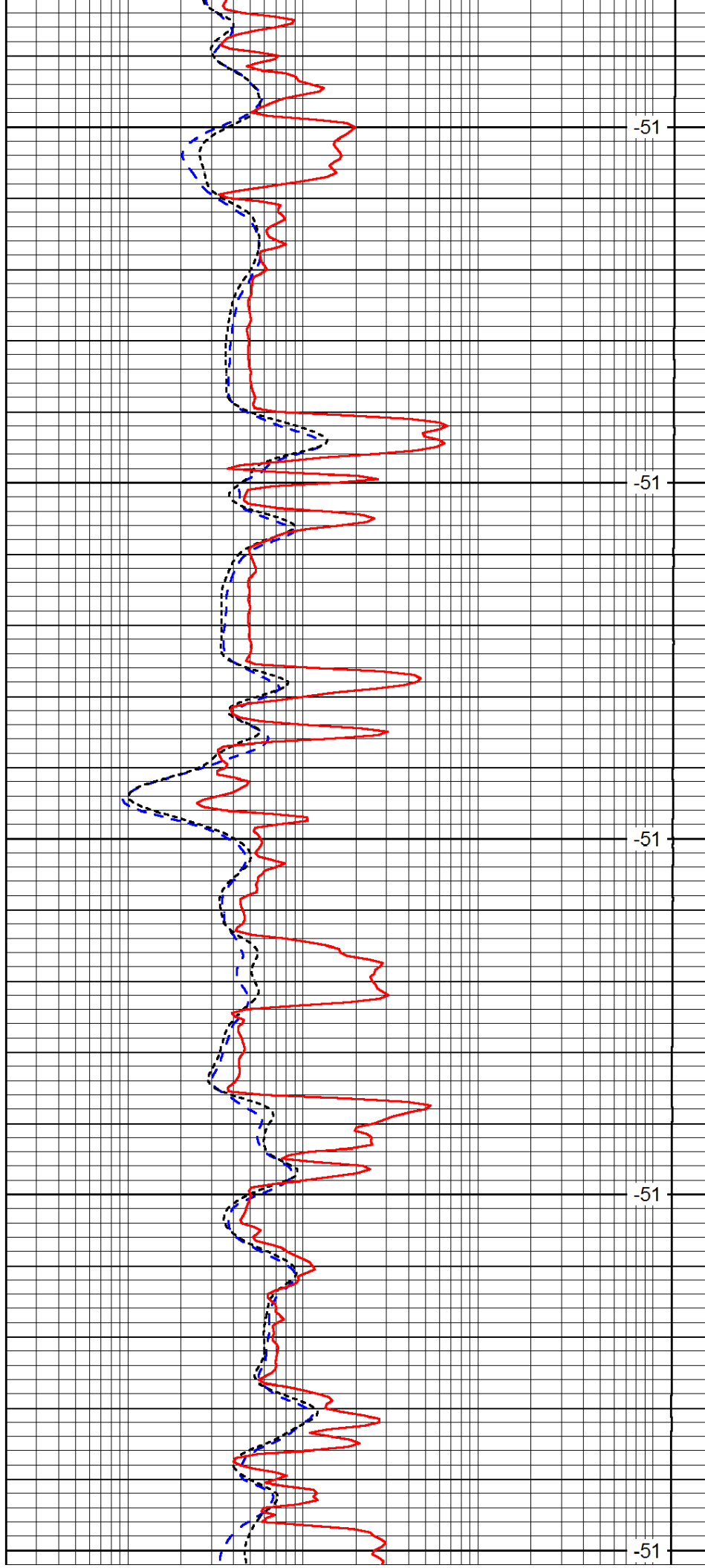
1100

1150

1200

1250

1300



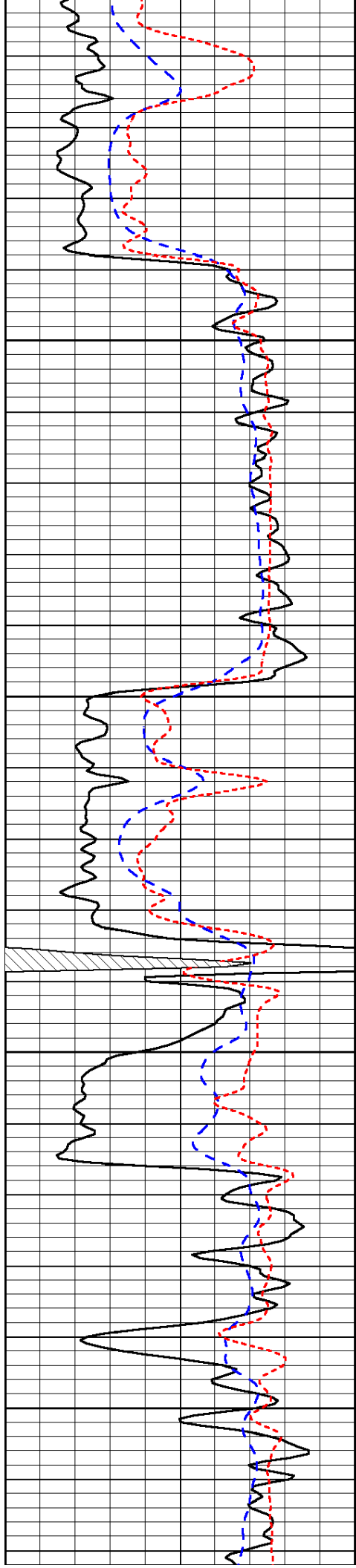
-51

-51

-51

-51

-51

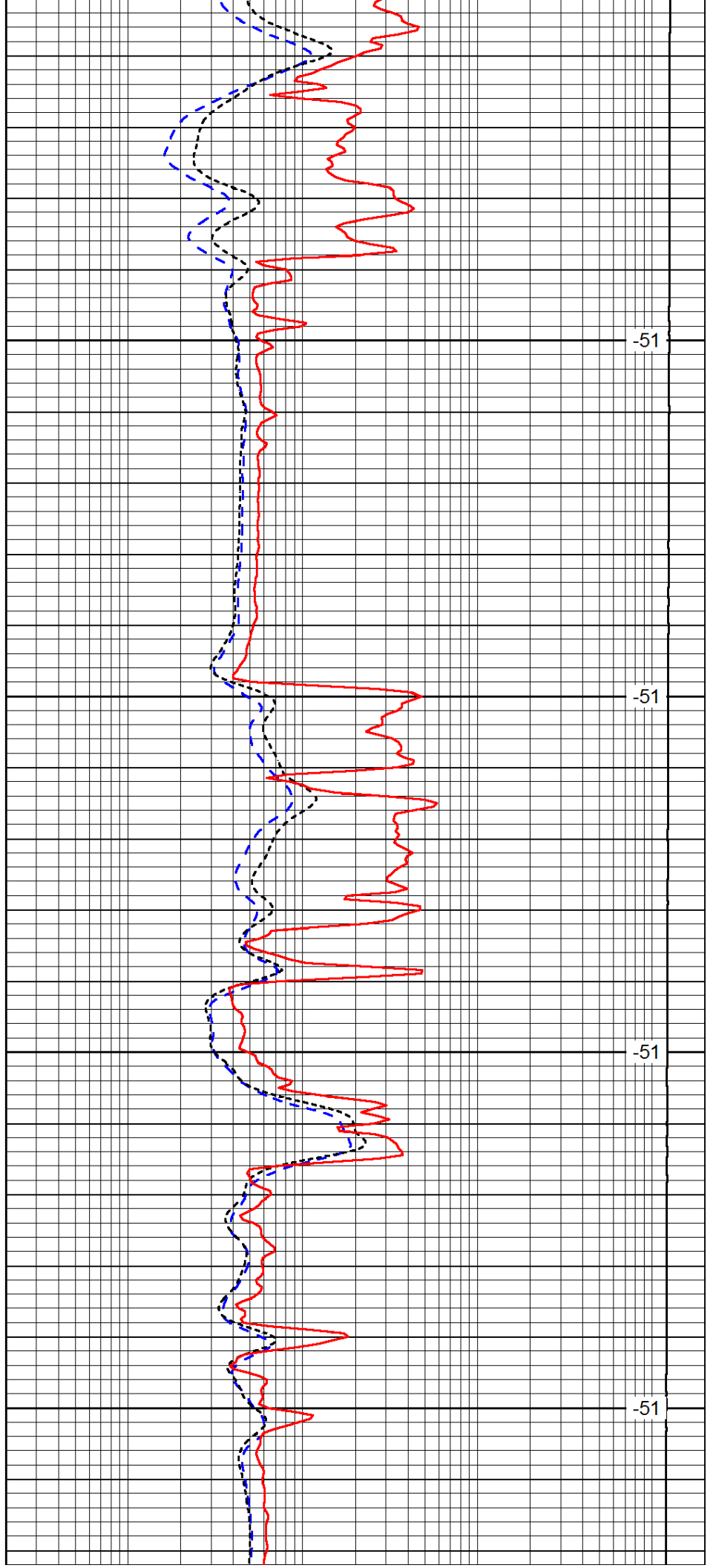


1350

1400

1450

1500

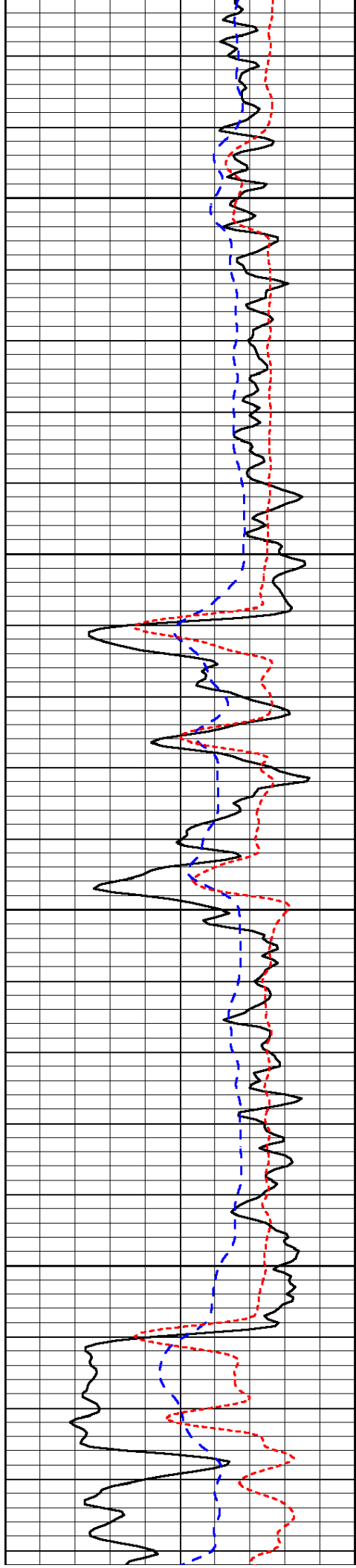


-51

-51

-51

-51

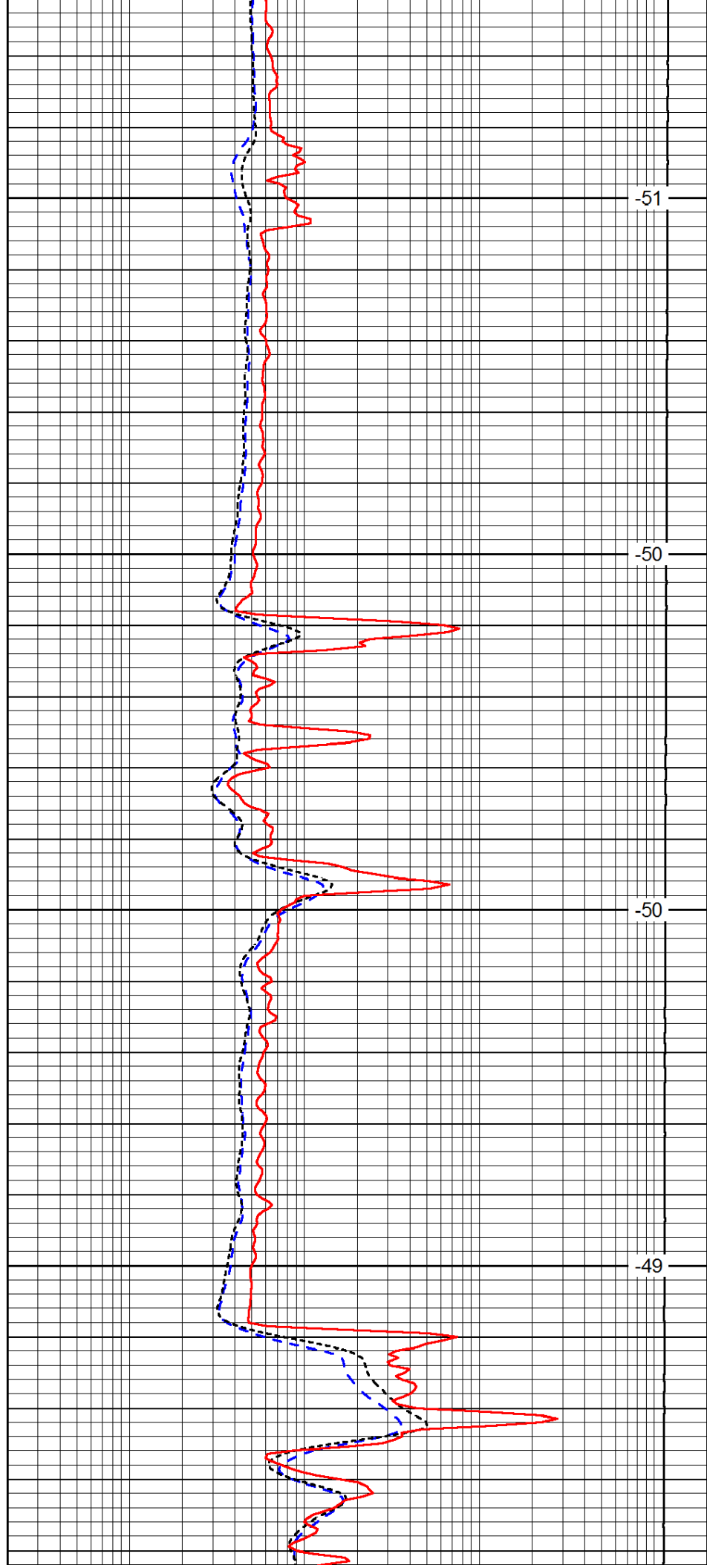


1550

1600

1650

1700

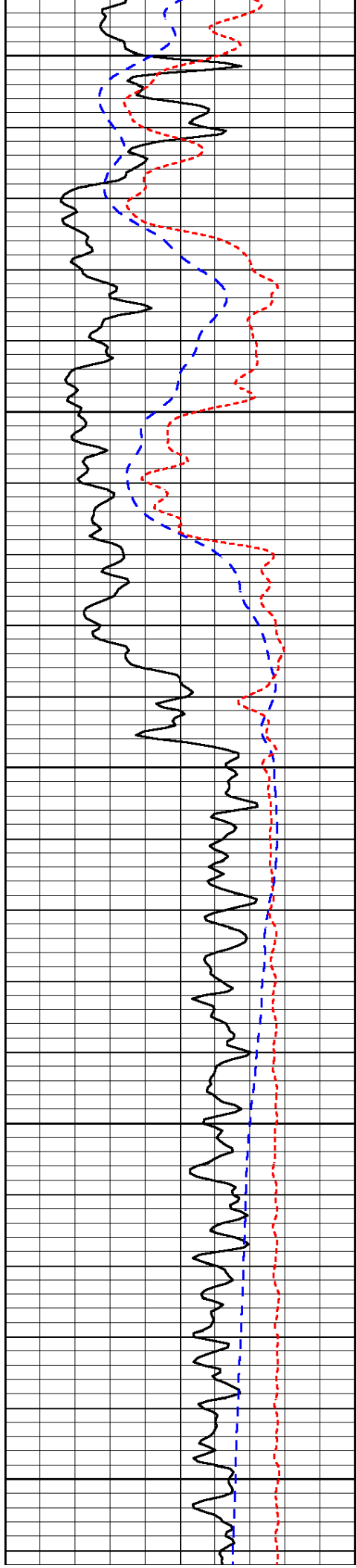


-51

-50

-50

-49



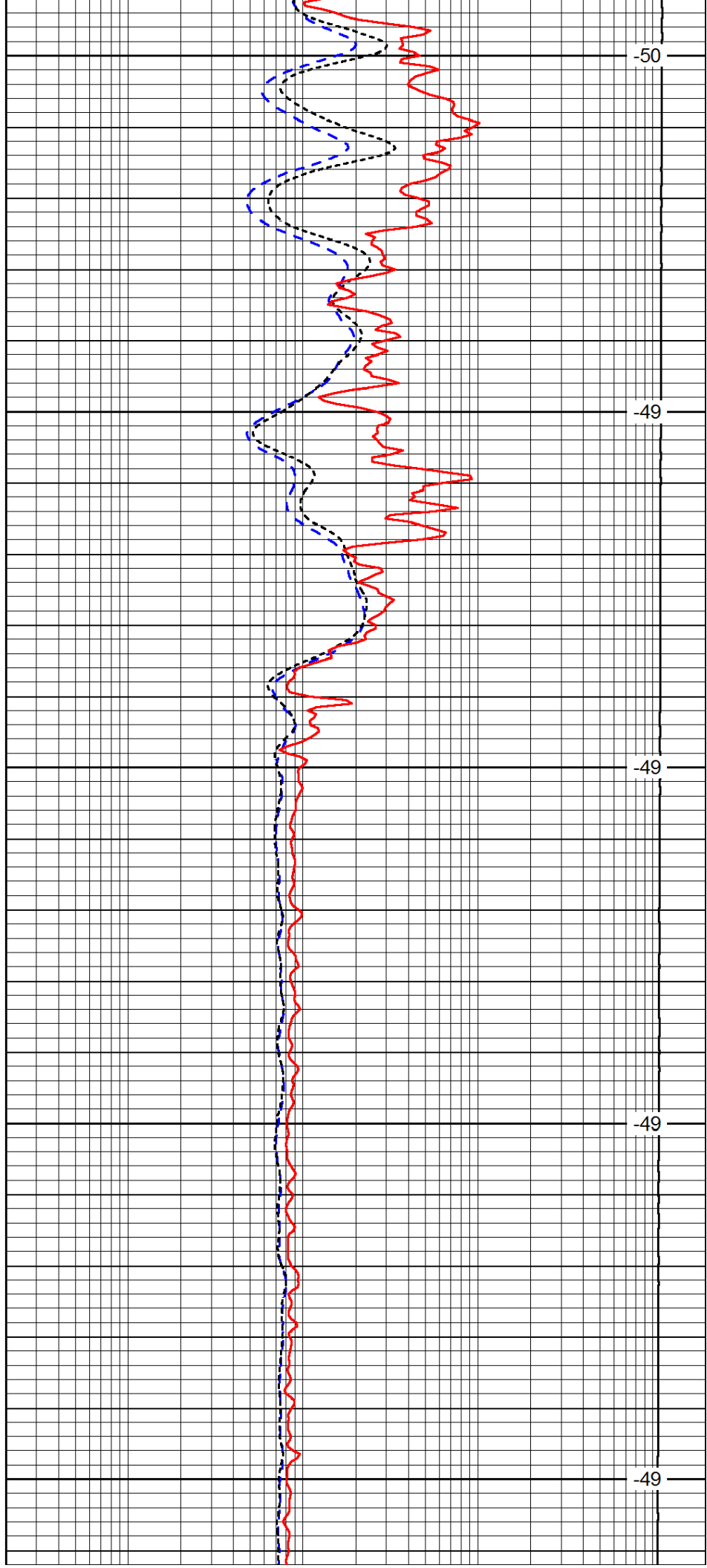
1750

1800

1850

1900

1950



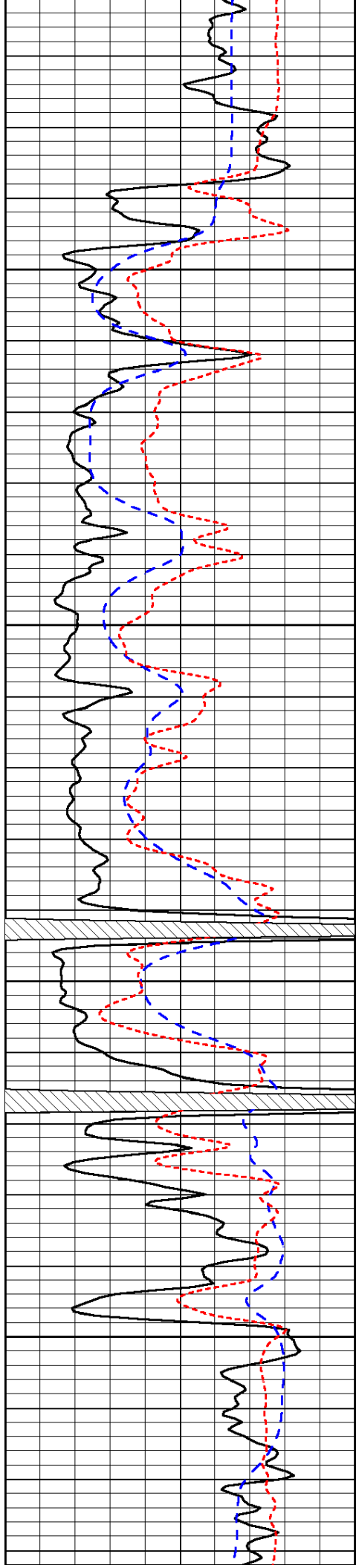
-50

-49

-49

-49

-49

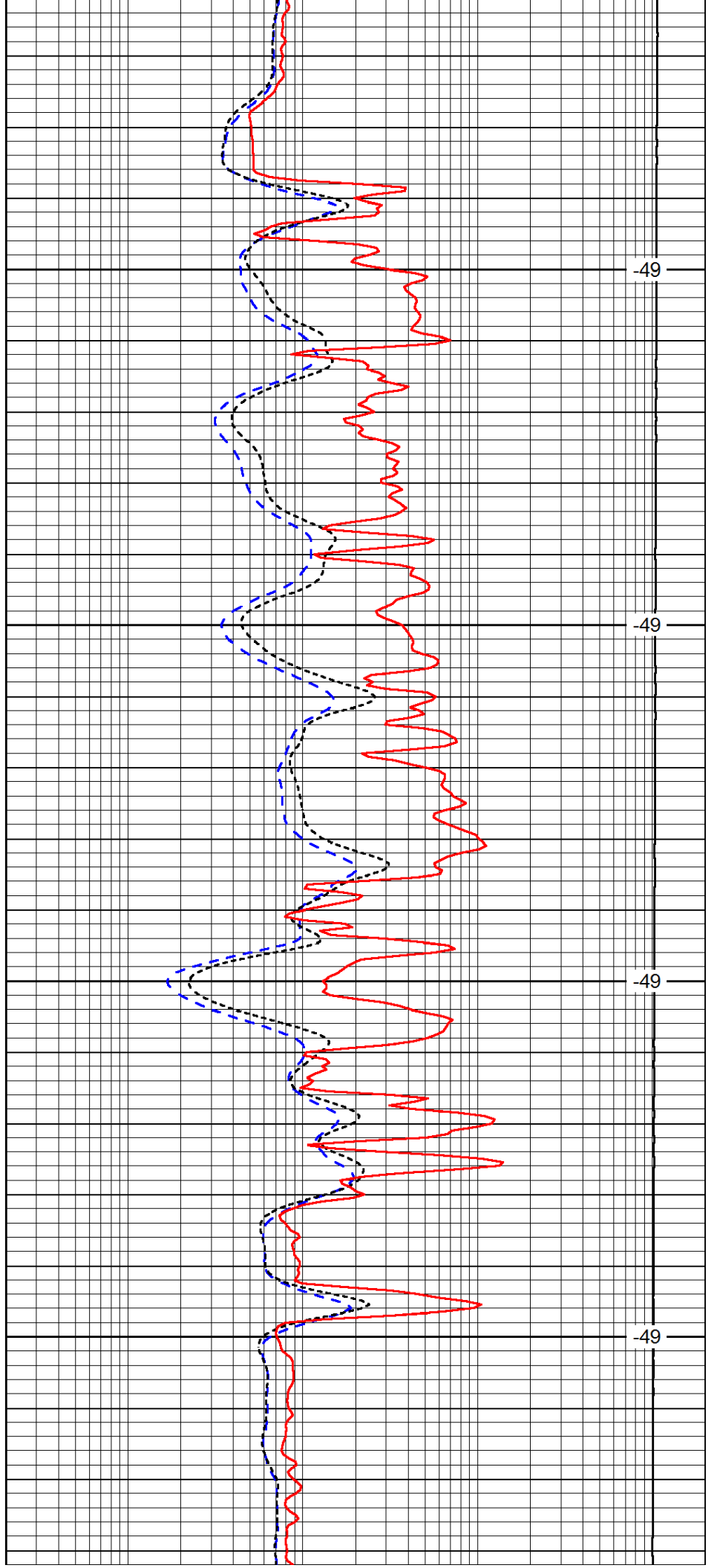


2000

2050

2100

2150

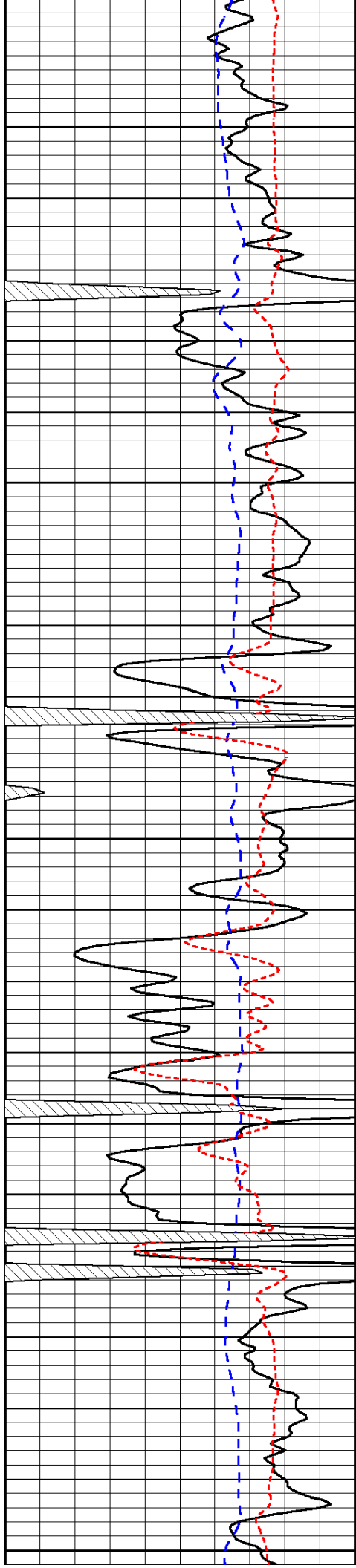


-49

-49

-49

-49



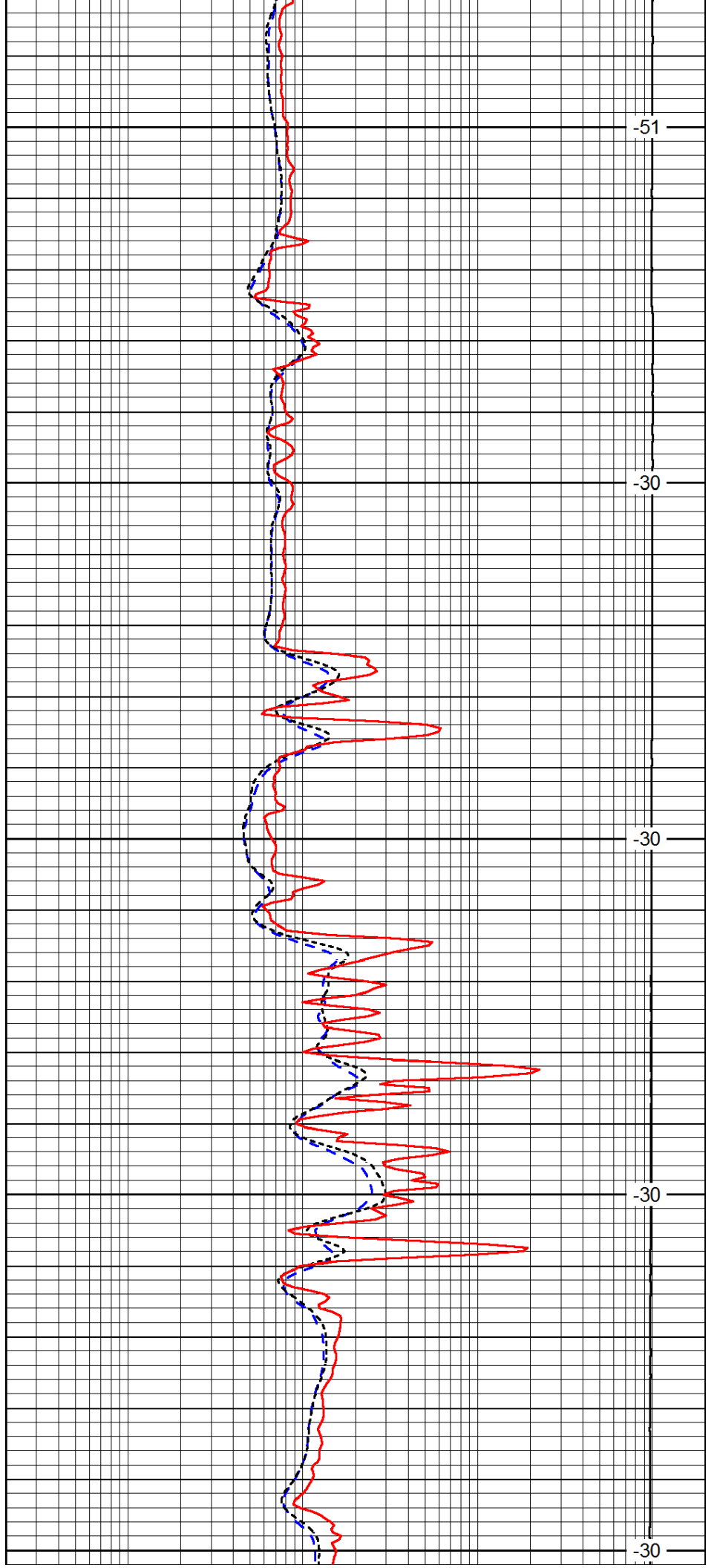
2200

2250

2300

2350

2400



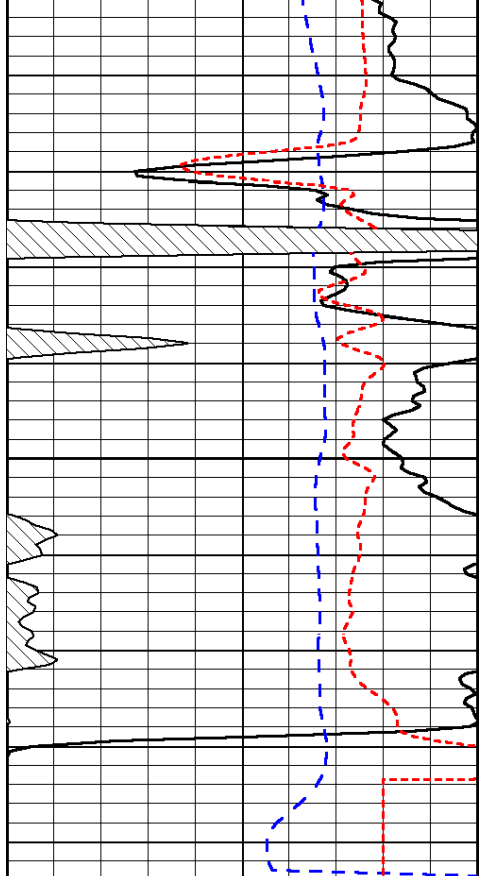
-51

-30

-30

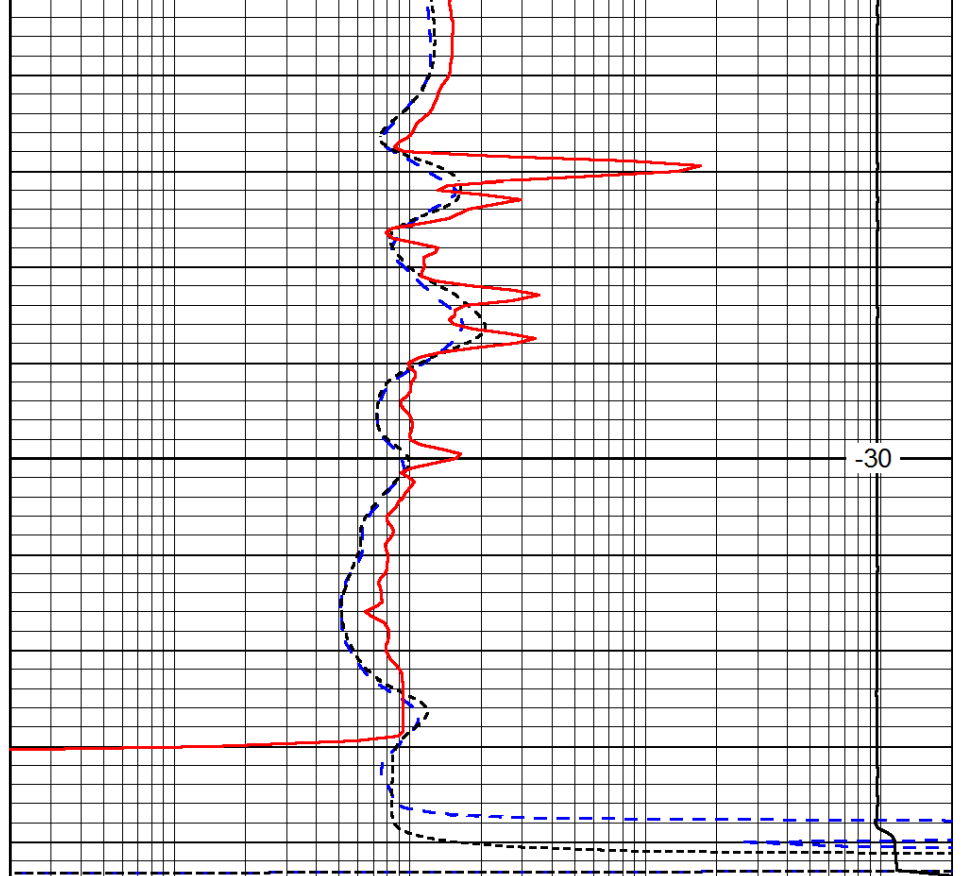
-30

-30



0	Gamma Ray	150
-200	SP (mV)	0
-160	Rxo / Rt	40

2450



0.2	Deep Resistivity	2000
0.2	Medium Resistivity	2000
0.2	Shallow Resistivity	2000
15000	Line Tension	0

LSPD