



**MIDWEST SURVEYS**  
 LOGGING - PERFORATING - CONSULTING SERVICES  
 P.O. Box 68, Osawatomie, KS 66064  
 913 / 755 - 2128

**GAMMA RAY / NEUTRON / CCL**

File No. Company Kansas Resources Exploration  
 Well Knabe "A" No. KR-4  
 Field Gardner  
 County Johnson State Kansas

Location 1074' FSL & 511' FEL  
 NW-NE-NE-SE

Sec. 10 Twp. 14S Rge. 22e  
 Permanent Datum GL Elevation NA  
 Log Measured From GL  
 Drilling Measured From GL

Date 01-09-2012  
 Run Number One  
 Depth Drier 756.0  
 Depth Logger 743.0  
 Bottom Logged Interval 742.0  
 Top Log Interval 20.0  
 Fluid Level Full

Type Fluid Water  
 Density / viscosity NA  
 Salinity - PPM Cl NA  
 Max. Recorded Temp NA  
 Estimated Cement Top 0.0  
 Equipment No. 107 Location Osawatomie  
 Recorded By Steve Minkisch  
 Witnessed By Brad Kramer

BORE-HOLE RECORD				CASING RECORD			
RUN No.	BIT	FROM	TO	SIZE	WGT.	FROM	TO
One	9.875"	0.0	20.0	7.00"	0.0	0.0	20.0
Two	5.625"	20.0	756.0	2.875"	0.0	0.0	746.0

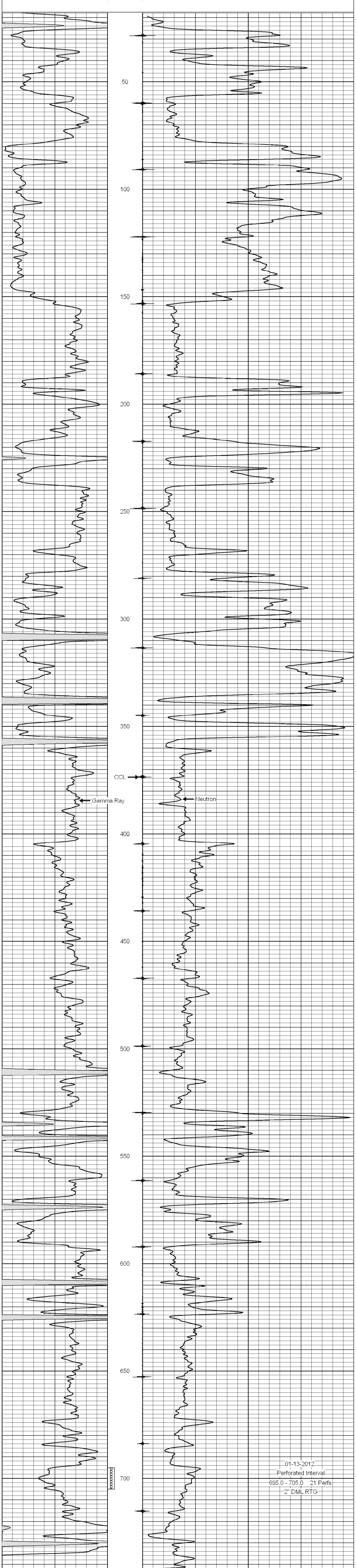
<<< Fold Here >>>

All interpretations are opinions based on inferences from electrical or other measurements and we cannot and do not guarantee the accuracy or correctness of any interpretation, and we shall not, except in the case of gross or willful negligence on our part, be liable or responsible for any loss, costs, damages, or expenses incurred or sustained by anyone resulting from any interpretation made by any of our officers, agents or employees. These interpretations are also subject to our general terms and conditions set out in our current Price Schedule.

Comments

Drilling Contractor :  
 Evans Energy & Development, Inc.

Database File: knabe4kra.db  
 Dataset Pathname: pass1  
 Presentation Format: gr-n-ccl  
 Dataset Creation: Mon Jan 09 16:32:19 2012 by Log SCH 111116  
 Charted by: Depth in Feet scaled 1:240



01-13-2012  
 Perforated Interval  
 695.0 - 705.0 21 Perfs  
 2" DML RTG