



MIDWEST SURVEYS
 LOGGING - PERFORATING - CONSULTING SERVICES
 P.O. Box 68, Osawatomie, KS 66064
 913 / 755 - 2128

GAMMA RAY / NEUTRON / CCL

File No.

Company Kansas Resources Exploration

Well Knabe "A" No. KR-5

Field Gardner

County Johnson State Kansas

Location

1075' FSL & 186' FEL
 NE-NE-SE-SE

Sec. 10 Twp. 14S Rge. 22e
 Permanent Datum GL Elevation NA
 Log Measured From GL K.B. NA
 Drilling Measured From GL D.F. NA
 GL NA

Date 01-09-2012

Run Number One

Depth Drier 756.0

Depth Logger 746.3

Bottom Logged Interval 745.3

Top Log Interval 20.0

Fluid Level Full

Type Fluid Water

Density / Viscosity NA

Salinity - PPM Cl NA

Max. Recorded Temp NA

Estimated Cement Top 0.0

Equipment No. Location 107 Osawatomie

Recorded By Steve Mindisch

Witnessed By Brad Kramler

Witnessed By

BORE-HOLE RECORD				CASING RECORD			
RUN	BIT	FROM	TO	SIZE	WGT.	FROM	TO
One	9.875"	0.0	20.0	7.00"	0.0	0.0	20.0
Two	5.625"	20.0	756.0	2.875"	0.0	0.0	749.0

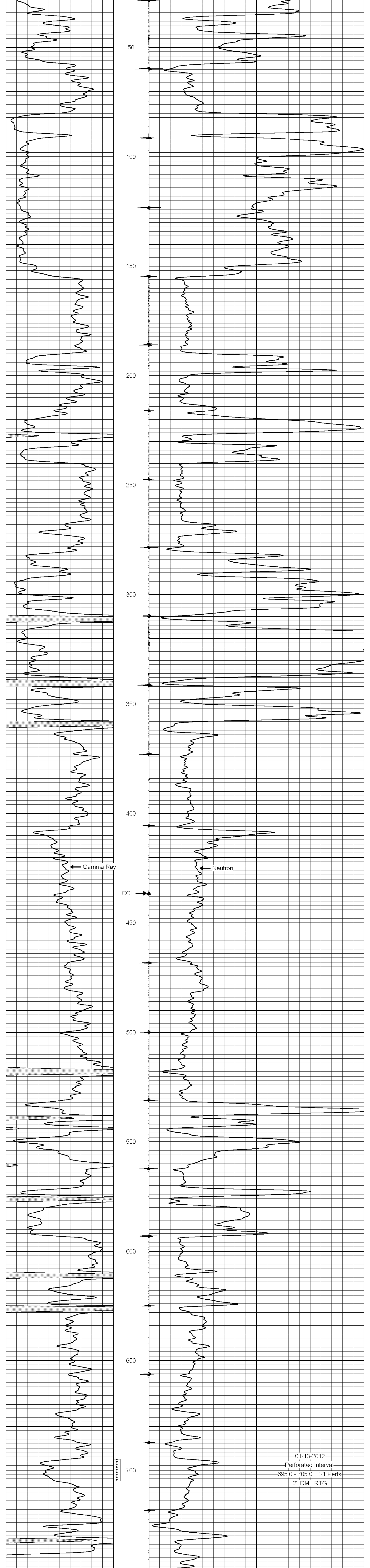
<<< Fold Here >>>

All interpretations are opinions based on inferences from electrical or other measurements and we cannot and do not guarantee the accuracy or correctness of any interpretation, and we shall not, except in the case of gross or willful negligence on our part, be liable or responsible for any loss, costs, damages, or expenses incurred or sustained by anyone resulting from any interpretation made by any of our officers, agents or employees. These interpretations are also subject to our general terms and conditions set out in our current Price Schedule.

Comments

Drilling Contractor :
 Utah Oil Company

Database File: knabe5kra.db
 Dataset Pathname: pass1
 Presentation Format: gr-n-ccl
 Dataset Creation: Mon Jan 09 16:00:36 2012 by Log SCH 111116
 Charted by: Depth in Feet scaled 1:240



01-13-2012
 Perforated Interval
 695.0 - 705.0 21 Perfs
 2" DML RTG