



**MIDWEST SURVEYS**  
 LOGGING - PERFORATING - CONSULTING SERVICES  
 P.O. Box 69, Osawatomie, KS 66064  
 913 / 755 - 2128

**GAMMA RAY / NEUTRON / CCL**

File No.

Company Kansas Resources Exploration

Well Knabe "A" No. KR-9

Field Gardner

County Johnson State Kansas

Location

951 FSL & 814 FEL

SE-NW-SE-SE

Sec. 10 Twp. 14S Rge. 22E

Permanent Datum Log Measured From G.L. G.L. Elevation NA

Drilling Measured From G.L. G.L. Elevation NA

Date 03-05-2012

Run Number One

Depth Dialer 766.0

Depth Logger 760.2

Bottom Logged Interval 749.2

Top Log Interval 20.0

Fluid Level Full

Type Fluid Water

Density / Viscosity NA

Salinity - PPM Cl NA

Max Recorded Temp NA

Estimated Cement Top 0.0

Equipment No. Location 107 Osawatomie

Recorded By Steve Mandich

Witnessed By Brad Kemmer

BORE-HOLE RECORD				CASING RECORD			
Run No.	BIT FROM	TO	SIZE	WGT.	FROM	TO	
One	9.875"	20.0	7.00"	0.0	0.0	20.0	
Two	5.625"	20.0	7.690"	2.875"	0.0	753.0	

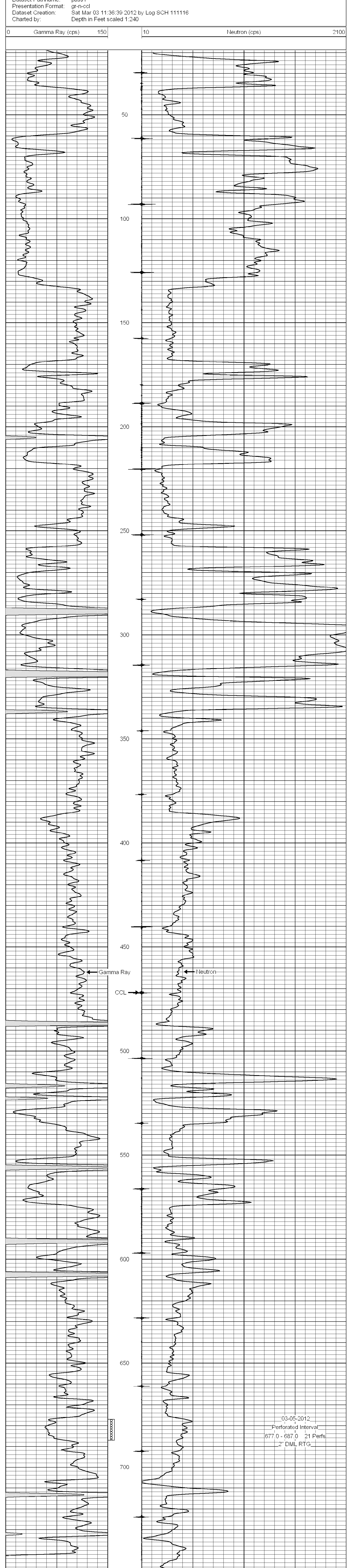
<<< Fold Here >>>

All interpretations are opinions based on inferences from electrical or other measurements and we cannot and do not guarantee the accuracy or correctness of any interpretation, and we shall not, except in the case of gross or willful negligence on our part, be liable or responsible for any loss, costs, damages, or expenses incurred or sustained by anyone resulting from any interpretation made by any of our officers, agents or employees. These interpretations are also subject to our general terms and conditions set out in our current Price Schedule.

Comments

Drilling Contractor :  
 Utah Oil Company

Database File: knabe@kra.db  
 Dataset Pathname: pass1  
 Presentation Format: gr-n-ccl  
 Dataset Creation: Sat Mar 03 11:36:39 2012 by Log SCH 111116  
 Charted by: Depth in Feet scaled 1:240



03-05-2012  
 Perforated Interval  
 677.0 - 687.0 21 Perfs  
 2" DML RTG