



**GAMMA RAY  
NEUTRON  
COMPLETION LOG**

Company TOWN OIL COMPANY, INC.  
Well BARTLETT #1-W  
Field PAOLA-RANTOUL  
County MIAMI  
State KANSAS

Location: 3970 FSL & 2670' FEL  
SE SE NE NW  
AP# : 15-121-28997-00-00  
Other Services

Permanent Datum SEC 13 TWP 18S RGE 21E Elevation 904' EST  
Log Measured From GL Elevation 904' EST  
Drilling Measured From GL D.F. 904' EST

|                        |                 |
|------------------------|-----------------|
| Date                   | 1/24/12         |
| Run Number             | 1 NW            |
| Depth Diller           | 582'            |
| Depth Logger           | 551.6'          |
| Top Log Interval       | 0               |
| Bottom Logged Interval | 551.6'          |
| Fluid Level            | FULL            |
| Type Fluid             | WATER           |
| Production Casing      | 2 7/8" @ TD @ @ |
| Max. Recorded Temp.    |                 |
| Estimated Cement Top   |                 |
| Calculated Cement Top  |                 |
| Amount & Type Cement   |                 |
| Drilling Contractor    |                 |
| Equipment Number       | 107             |
| Location               | UDEN, D.        |
| Recorded By            | TOWN, L.        |
| Witnessed By           |                 |

<<< Fold Here >>>

All interpretations are opinions based on inferences from electrical or other measurements and we cannot and do not guarantee the accuracy or correctness of any interpretation, and we shall not, except in the case of gross or willful negligence on our part, be liable or responsible for any loss, costs, damages, or expenses incurred or sustained by anyone resulting from any interpretation made by any of our officers, agents or employees. These interpretations are also subject to our general terms and conditions set out in our current Price Schedule.

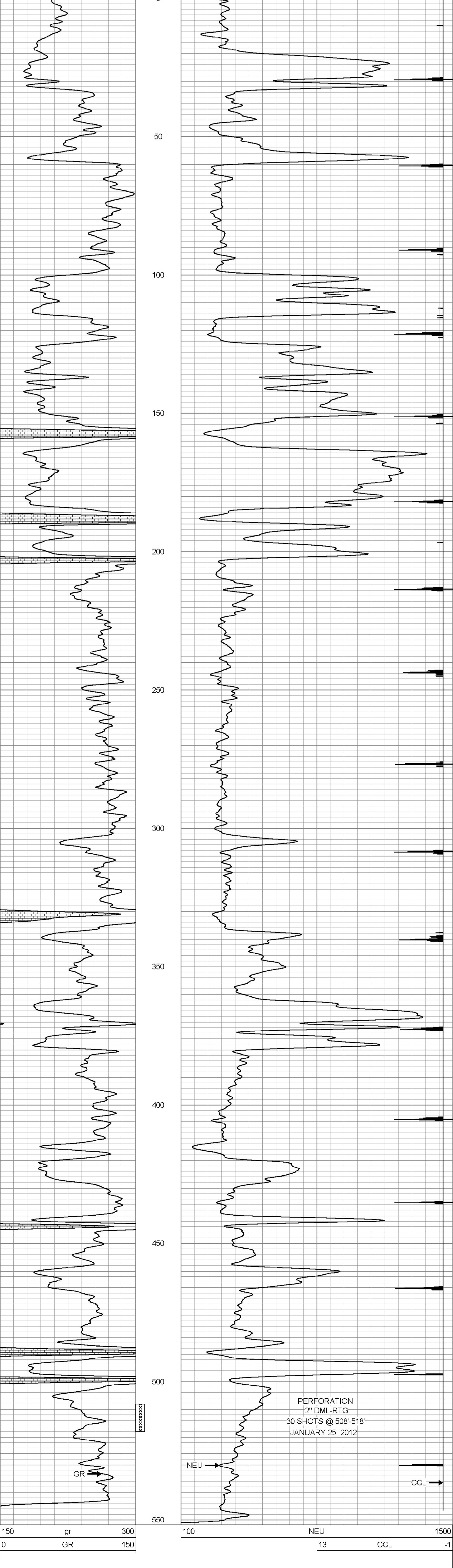
**Comments**

THANK YOU

| Sensor | Offset (ft) | Schematic | Description                                           | Len (ft) | OD (in) | Wt (lb) |
|--------|-------------|-----------|-------------------------------------------------------|----------|---------|---------|
| GR     | 7.59        |           | GR-TITAN_169 (TIT169_001)<br>Titan 1 11/16" Gamma Ray | 4.75     | 1.69    | 20.00   |
| CCL    | 5.05        |           | CCL-TITAN_169 (TIT169)<br>Titan 1 11/16" Logging CCL  | 1.83     | 1.69    | 7.50    |
| NEU    | 0.63        |           | NEU-TITAN_169 (TIT169_001)<br>Titan 1 11/16" Neutron  | 4.33     | 1.69    | 20.00   |

Dataset: bartlett #1-w.db: field/well/run1/pass1  
Total Length: 10.92 ft  
Total Weight: 47.50 lb  
O.D.: 1.69 in

Database File: g:\bartlett #1-w.db  
Dataset Pathname: pass1  
Presentation Format: dirk 1  
Dataset Creation: Tue Jan 24 15:08:37 2012 by Log Std Casedhole 07122  
Charted by: Depth in Feet scaled 1:240



Company TOWN OIL COMPANY, INC.  
Well BARTLETT #1-W  
Field PAOLA-RANTOUL  
County MIAMI SEC. 13, TWP. 18S, RGE. 21E  
State KANSAS Date 1/24/12