



DIGITAL LOG (785) 625-3858

Dual Compensated Porosity Log

15-007-23857-00-00

API No. Company N-10 Exploration, LLC
 Well Medicine River Ranch "B" #10
 Field Landis
 County Barber State Kansas
 Location 450' FEL / 760' FNL
 Sec: 15 Twp: 34S Rge: 11W
 Permanent Datum Ground Level Elevation 1366
 Log Measured From Kelly Bushing 10 Ft. Above Perm. Datum
 Drilling Measured From Kelly Bushing
 Date 4/18/2012
 Run Number One
 Type Log CNL / CDL
 Depth Driller 5120
 Depth Logger 5090
 Bottom Logged Interval 5069
 Top Logged Interval 2500
 Type Fluid In Hole Chemical
 Salinity, PPM CL 4000
 Density 9.5
 Level Full
 Max. Rec. Temp. F 127
 Operating Rig Time 3 Hours
 Equipment -- Location 15 Hays
 Recorded By R. Barnhart
 Witnessed By Tim Pierce

Borehole Record				Casing Record			
Run No.	Bit	From	To	Size	Wgt. 24#	From	To
1	12.25	00	251	8.625	24#	00	251
2	7.875	251	5120				

<<< Fold Here >>>

All interpretations are opinions based on inferences from electrical or other measurements and we cannot and do not guarantee the accuracy or correctness of any interpretation, and we shall not, except in the case of gross or willful negligence on our part, be liable or responsible for any loss, costs, damages, or expenses incurred or sustained by anyone resulting from any interpretation made by any of our officers, agents or employees. These interpretations are also subject to our general terms and conditions set out in our current Price Schedule.

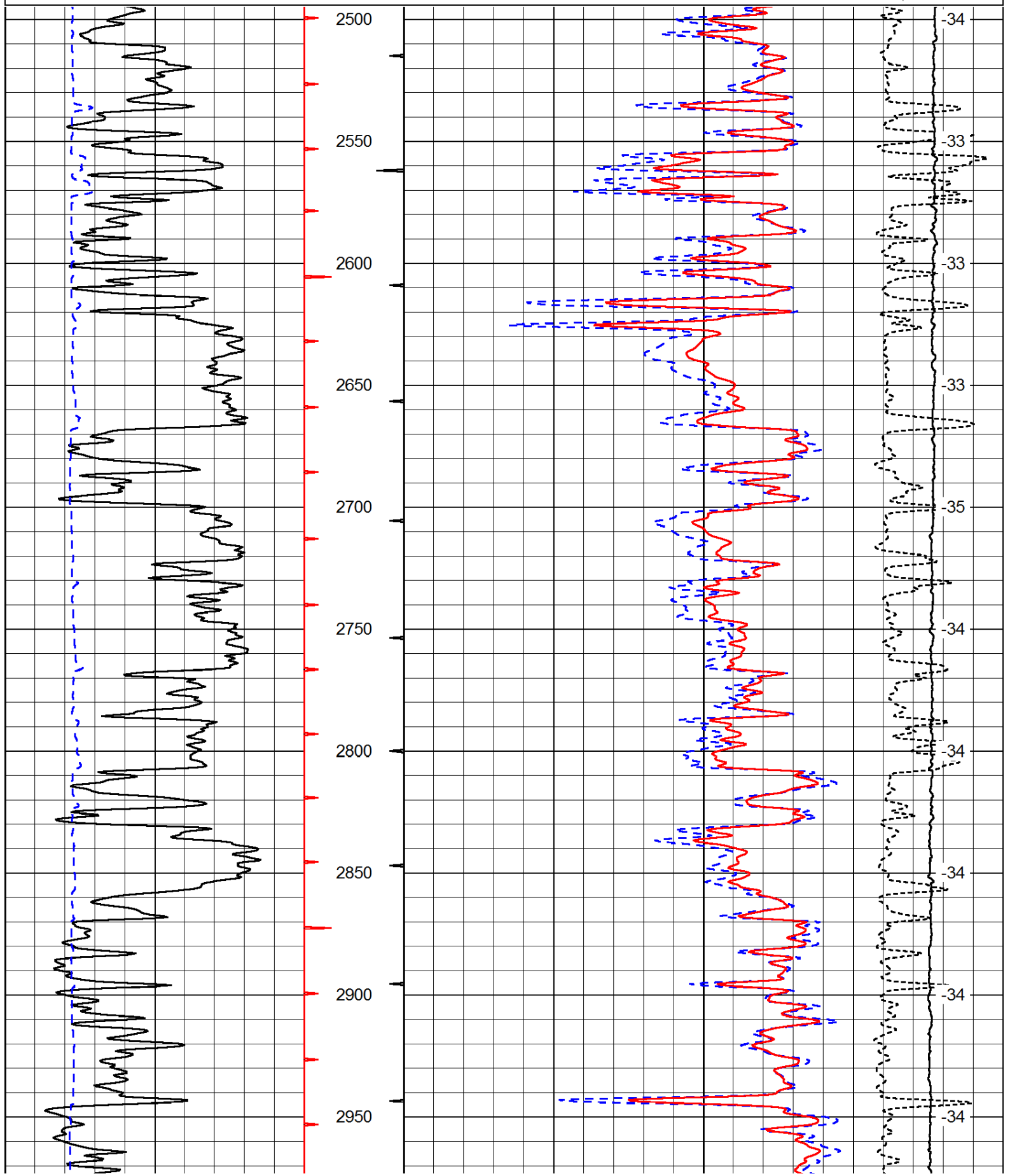
Comments

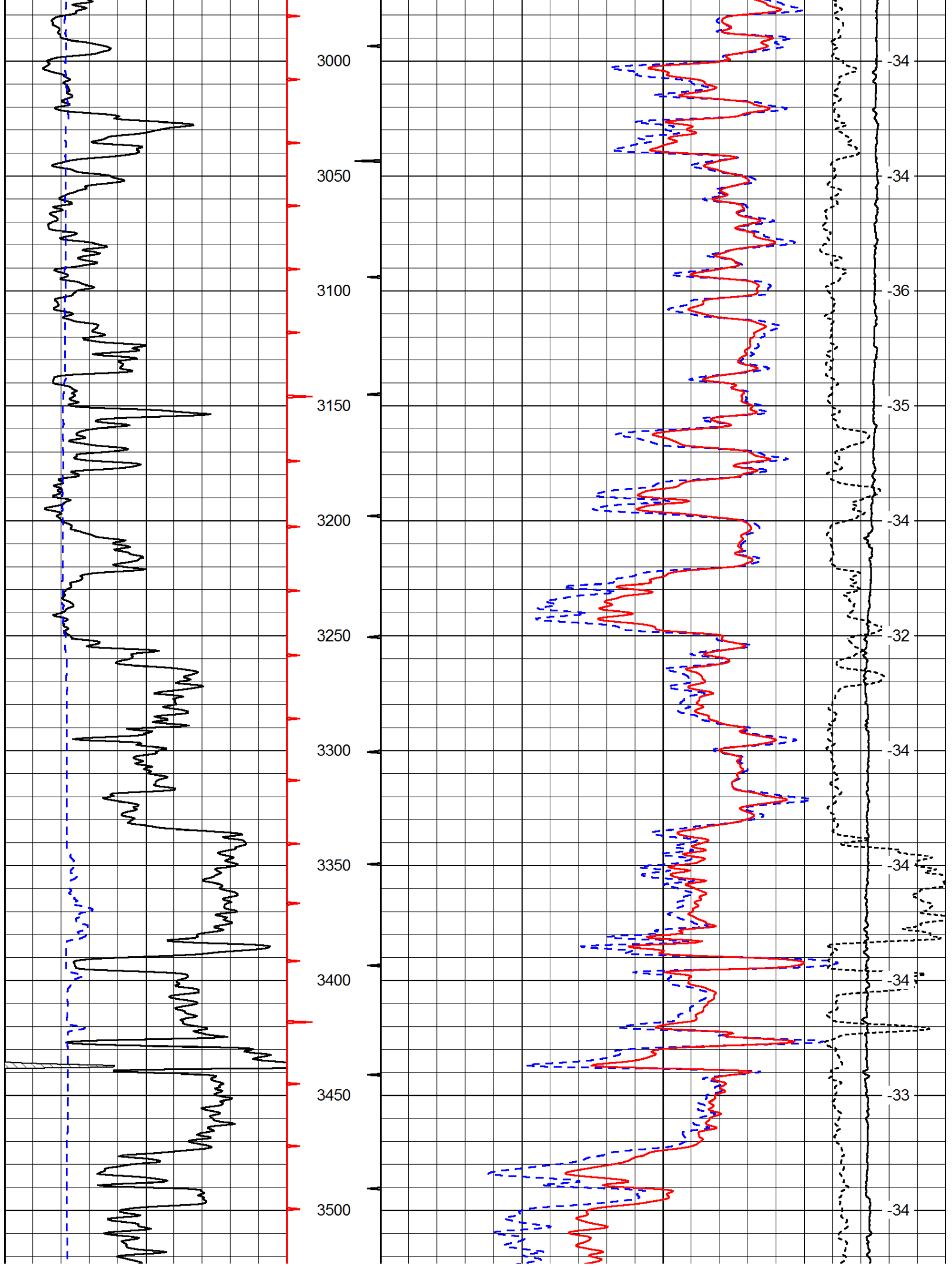
Thank you for using Log-Tech, Inc.
 (785) 625-3858
 Medicine Lodge, KS:
 S to Gerlane Rd, 7E to Bethel Rd,
 2S to Scott Canyon Rd, 1W, 1/8S, W into

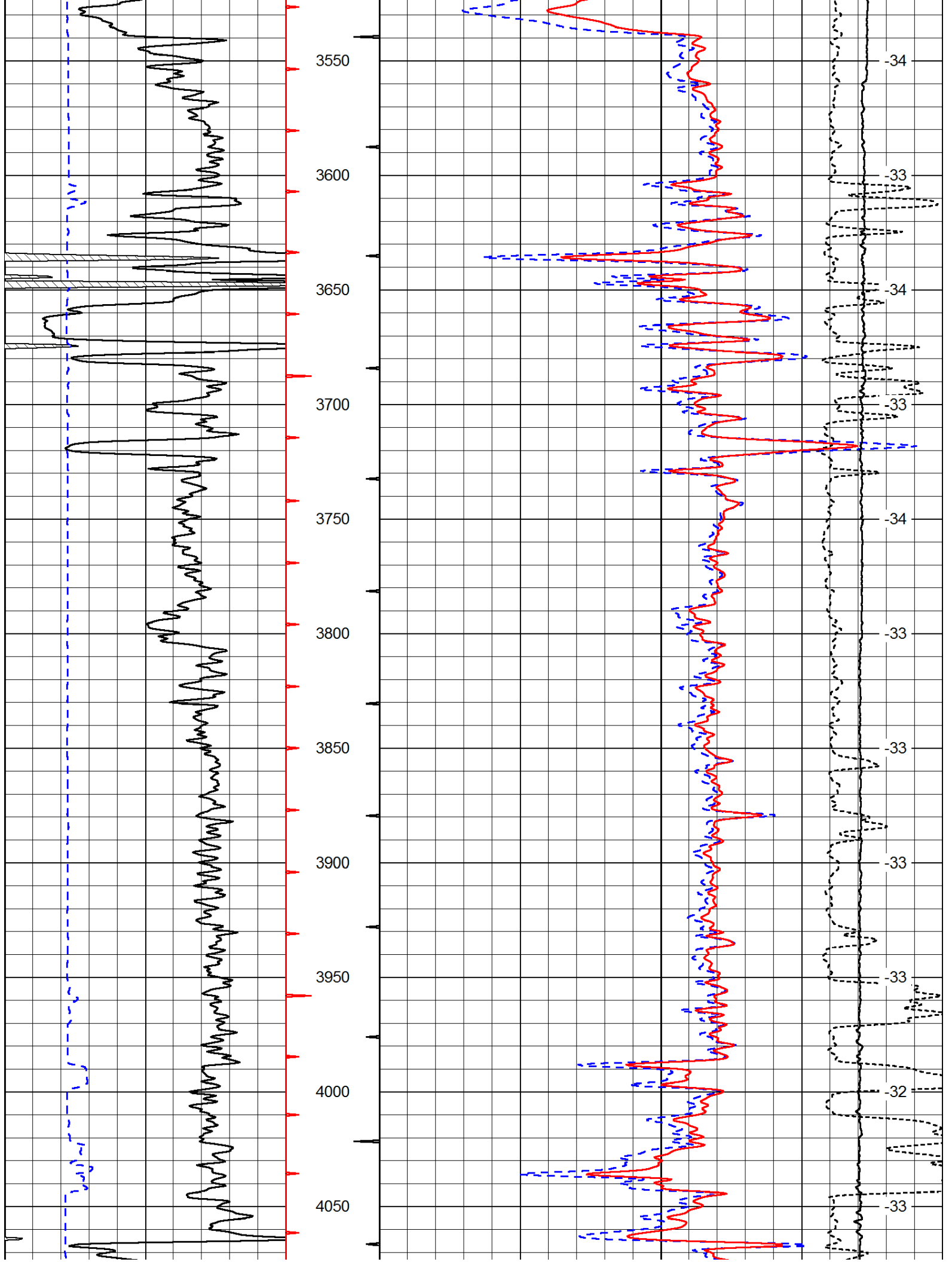
Database File: c:\warrior\data\n-10 exploration_medicine river ranch b #10\n10_hd.db
 Dataset Pathname: dil/n10main
 Presentation Format: cdl
 Dataset Creation: Thu Apr 19 08:50:41 2012
 Charted by: Depth in Feet scaled 1:600

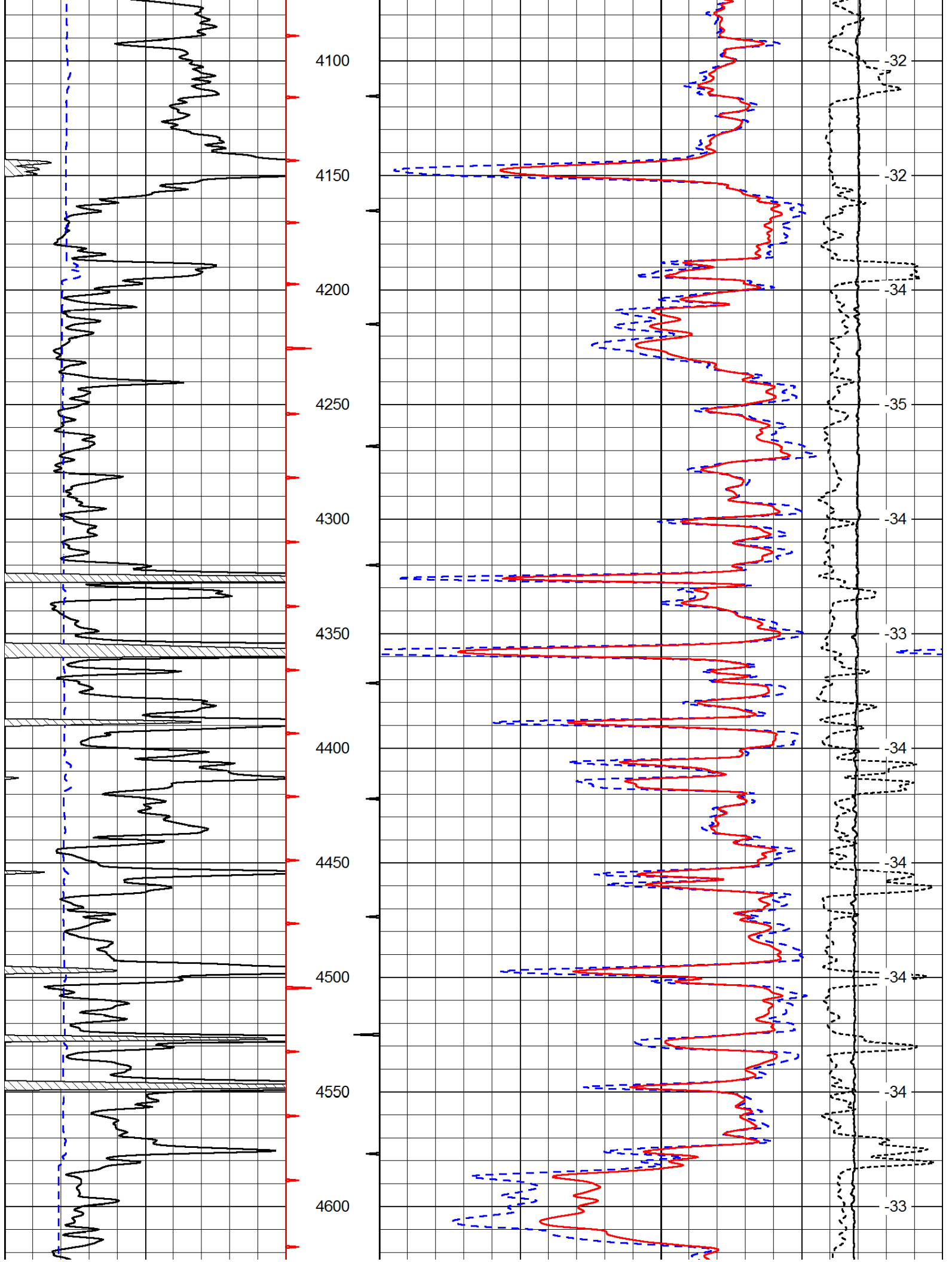
0	Gamma Ray	150
6	Caliper (GAPI)	16

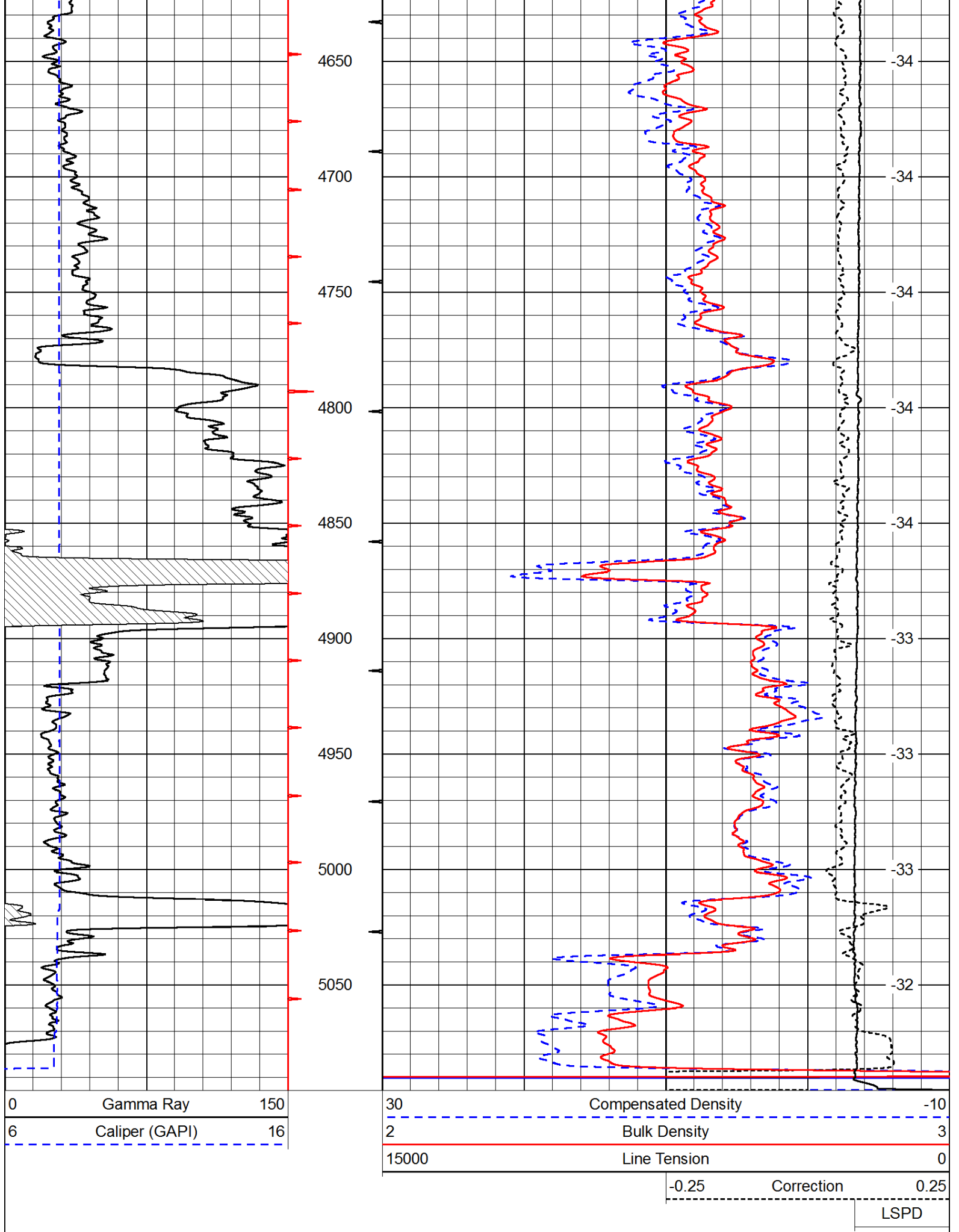
30	Compensated Density	-10
2	Bulk Density	3
15000	Line Tension	0
-0.25	Correction	0.25
LSPD		











Database File: c:\warrior\data\n-10 exploration_medicine river ranch b #10\n10_hd.db
 Dataset Pathname: dil/n10main
 Presentation Format: cndlspec
 Dataset Creation: Thu Apr 19 08:50:41 2012
 Charted by: Depth in Feet scaled 1:240

0	Gamma Ray	150	30	Compensated Neutron (Limestone)	-10
6	Caliper (GAPI)	16	30	Compensated Density (Limestone)	-10
			15000	Line Tension	0
			-0.25 Correction		0.25
			LSPD		

