



DIGITAL LOG (785) 625-3858

Dual Induction Log

15-007-23857-00-00

API No.

Company N-10 Exploration, LLC

Well Medicine River Ranch "B" #10

Field Landis

County Barber

State

Kansas

Location

450' FEL / 760' FNL

Other Services
CNL / CDL

Sec: 15 Twp: 34S Rge: 11W

Permanent Datum Ground Level Elevation 1366
Log Measured From Kelly Bushing 10 Ft. Above Perm. Datum
Drilling Measured From Kelly Bushing

Elevation

K.B. 1376

D.F. 1366

G.L. 1366

Date 4/18/2012

Run Number One

Depth Driller 5120

Depth Logger 5090

Bottom Logged Interval 5089

Top Log Interval 250

Casing Driller 8.625 @ 251

Casing Logger 249

Bit Size 7.875

Type Fluid in Hole Chemical

Salinity, ppm CL 4000

Density / Viscosity 9.5 58

pH / Fluid Loss 10.5 9.2

Source of Sample Flowline

Rm @ Meas. Temp 0.55 @ 75

Rmf @ Meas. Temp 0.41 @ 75

Rmc @ Meas. Temp 0.74 @ 75

Source of Rmf / Rmc Charts

Rm @ BHT 0.32 @ 127

Operating Rig Time 3 Hours

Max Rec. Temp. F 127

Equipment Number 15

Location Hays

Recorded By R. Barnhart

Witnessed By Tim Pierce

<<< Fold Here >>>

All interpretations are opinions based on inferences from electrical or other measurements and we cannot and do not guarantee the accuracy or correctness of any interpretation, and we shall not, except in the case of gross or willful negligence on our part, be liable or responsible for any loss, costs, damages, or expenses incurred or sustained by anyone resulting from any interpretation made by any of our officers, agents or employees. These interpretations are also subject to our general terms and conditions set out in our current Price Schedule.

Comments

Thank you for using Log-Tech, Inc.
(785) 625-3858

Medicine Lodge, KS:
S to Gerlane Rd, 7E to Bethel Rd,
2S to Scott Canyon Rd, 1W, 1/8S, W into

Database File: c:\warrior\data\n-10 exploration_medicine river ranch b #10\n10_hd.db
Dataset Pathname: dil\n10main
Presentation Format: dil2in
Dataset Creation: Thu Apr 19 08:50:41 2012
Charted by: Depth in Feet scaled 1:600

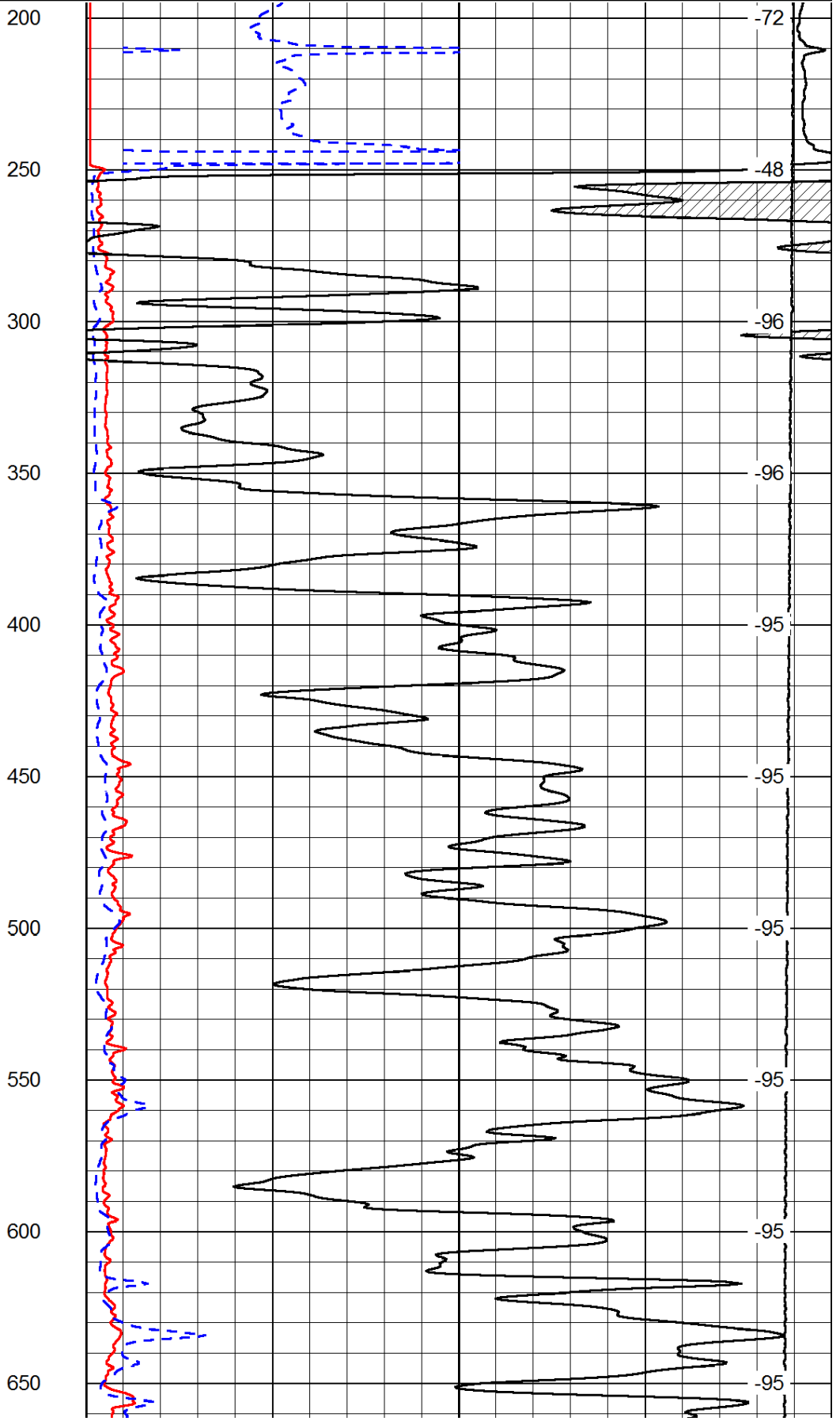
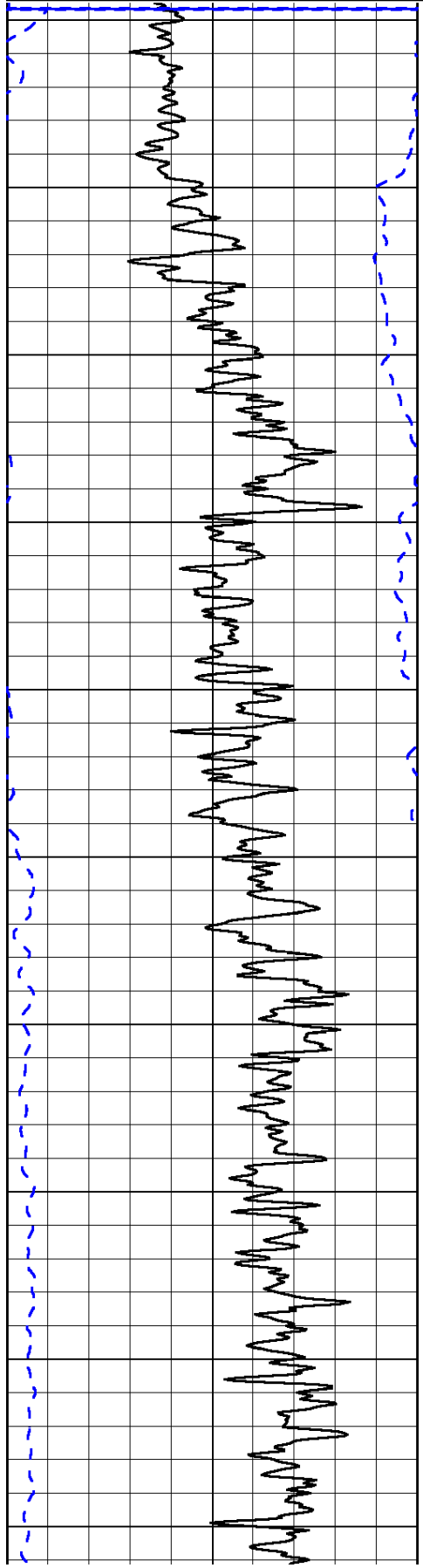
0	Gamma Ray	150
-200	SP (mV)	0

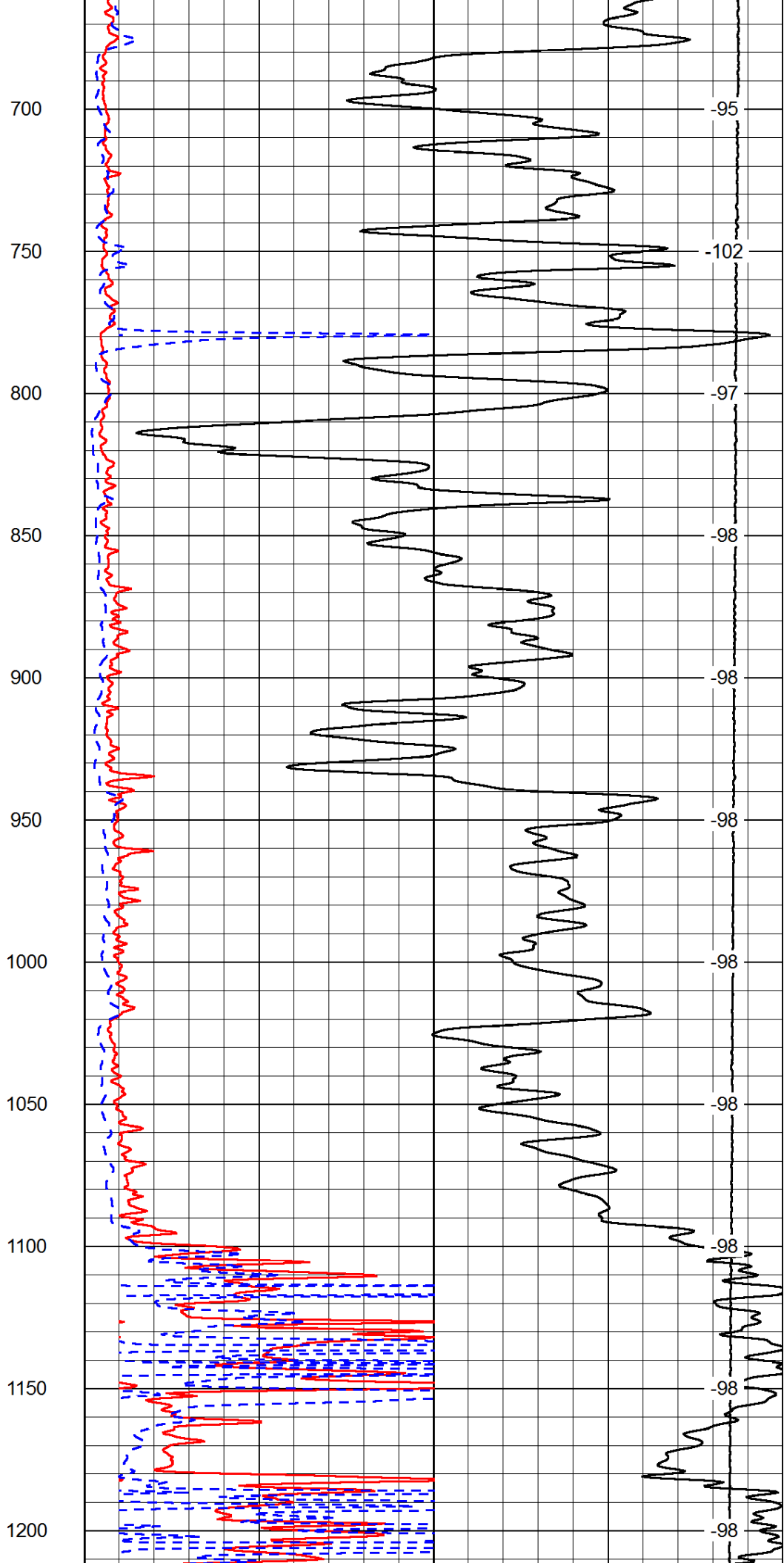
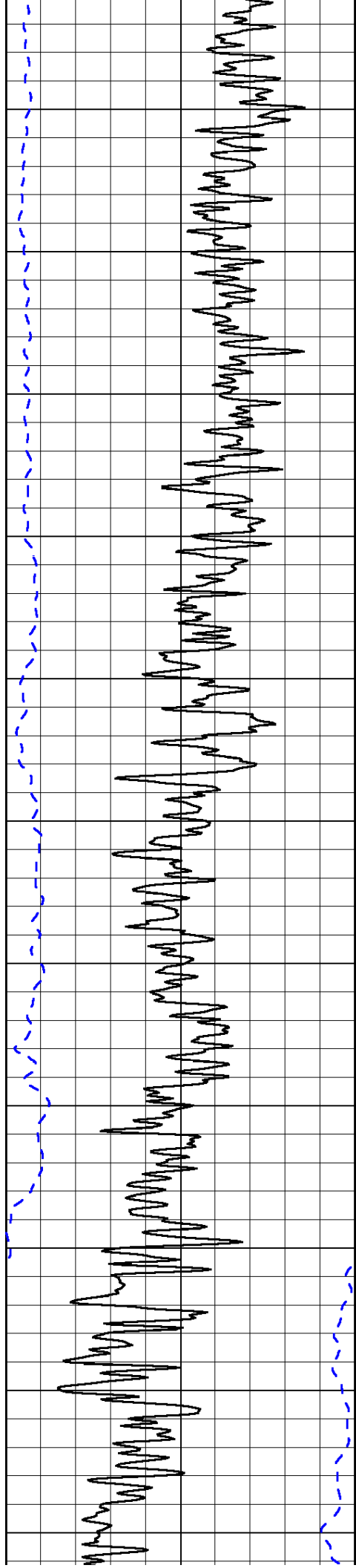
0	Shallow Resistivity	50
0	Deep Resistivity	50

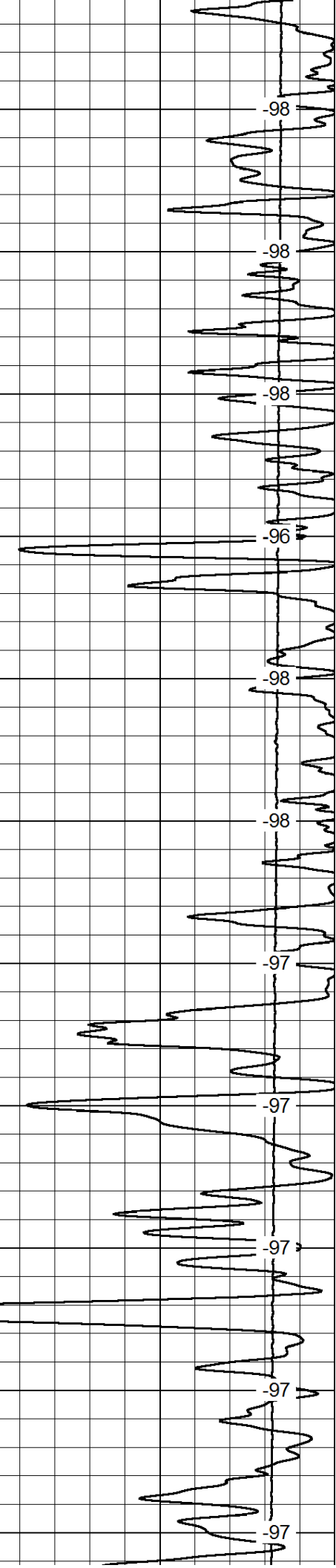
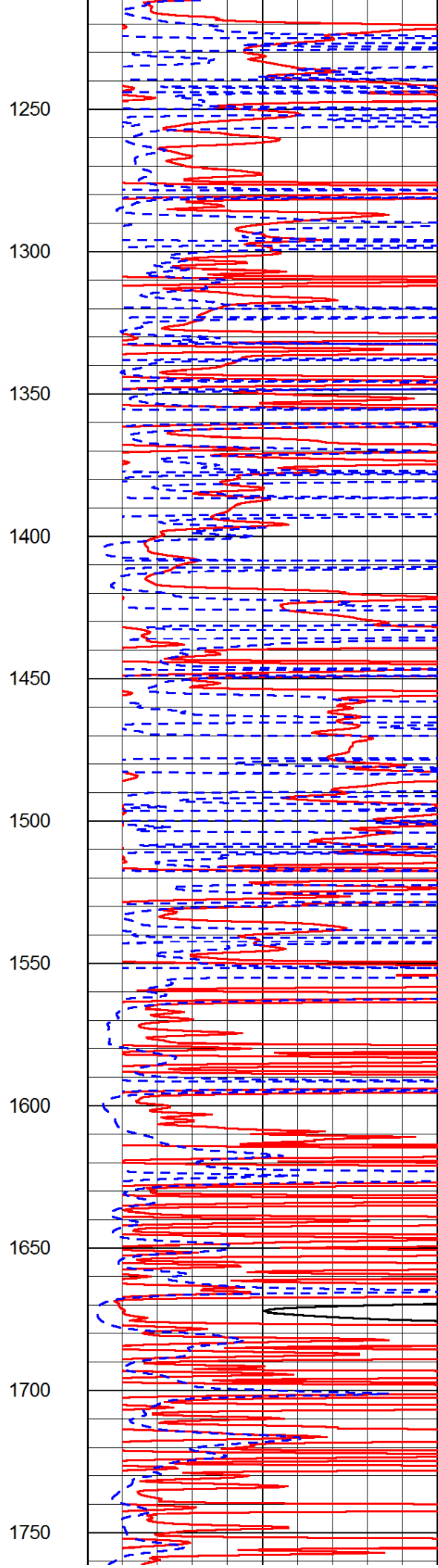
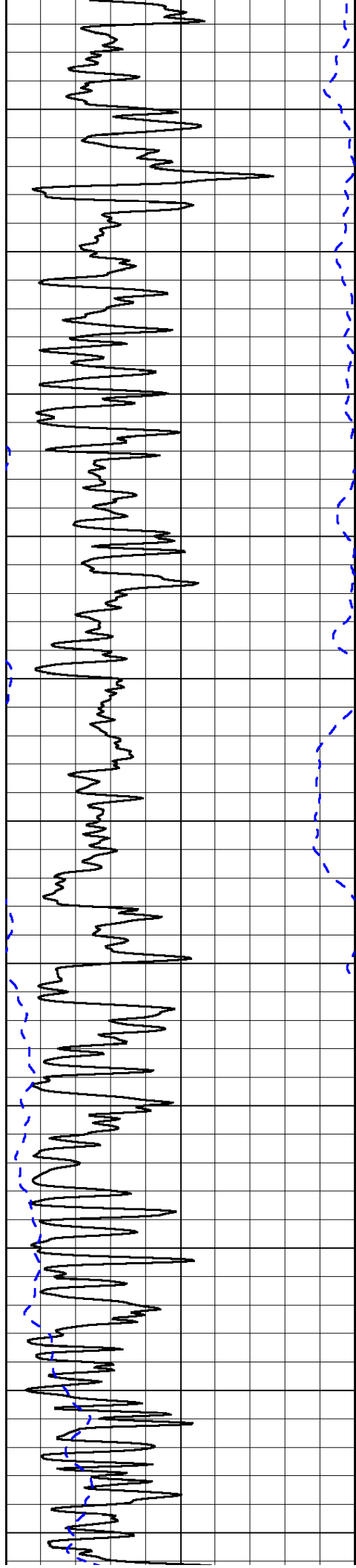
LSPD

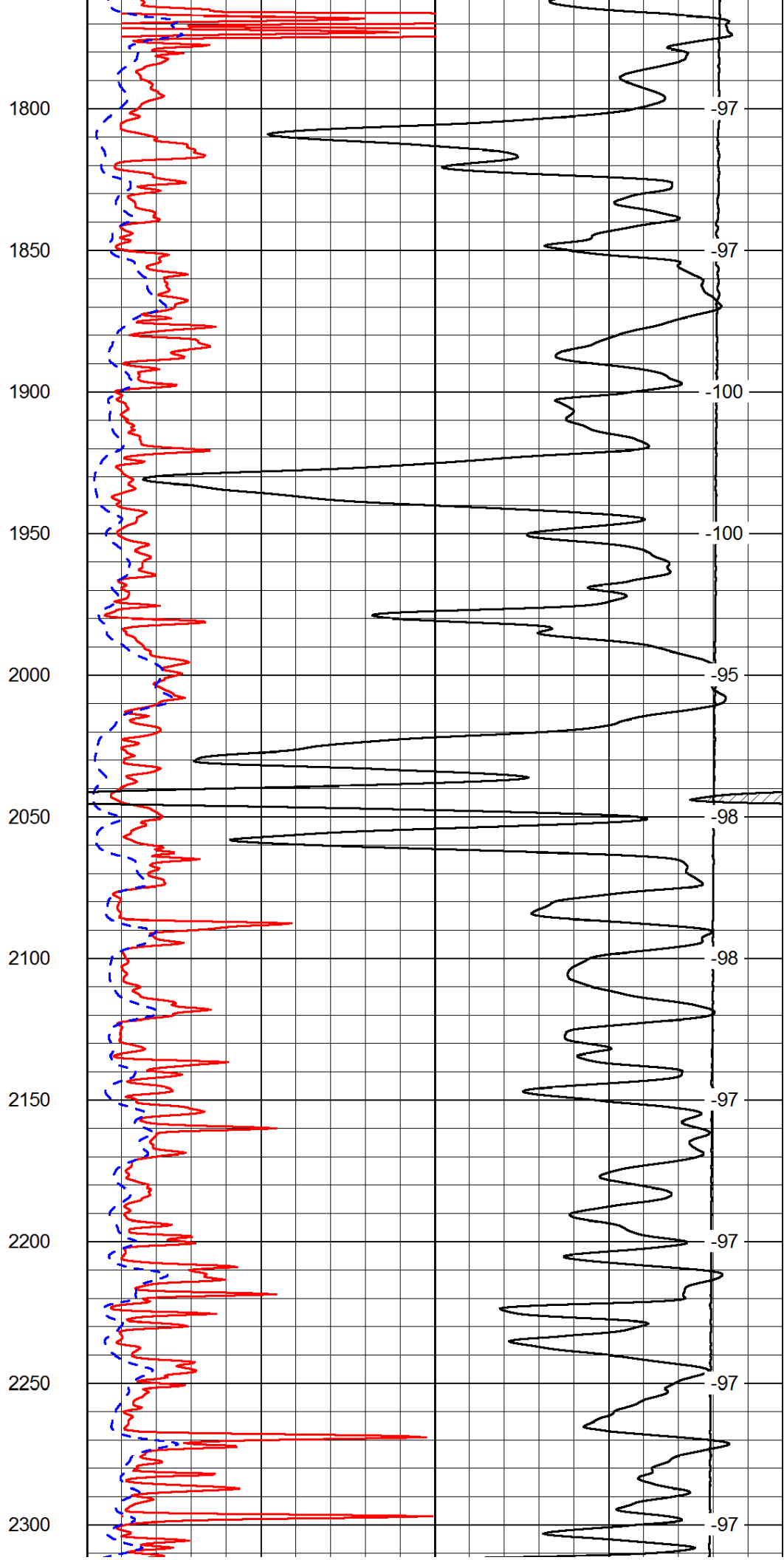
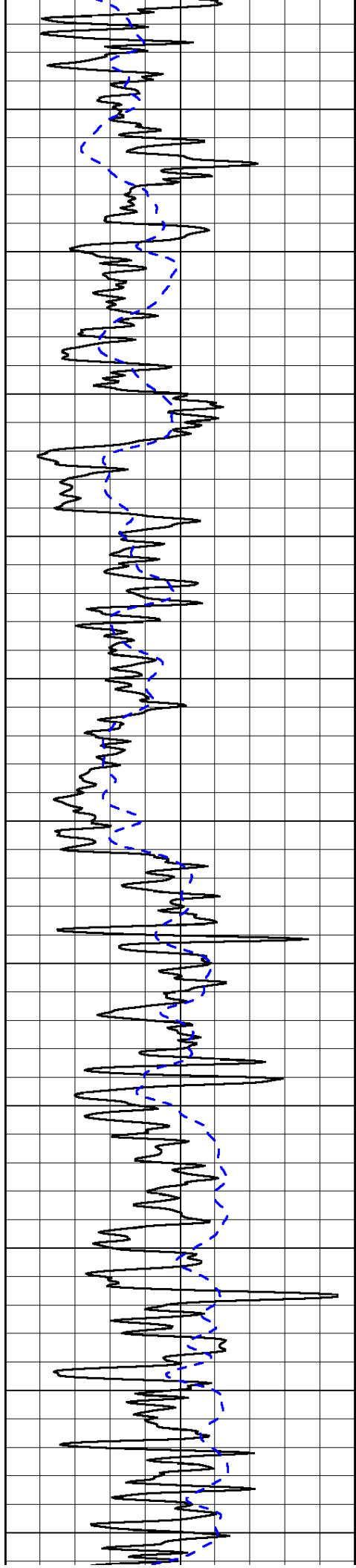
1000	Conductivity	0
15000	Line Tension	0

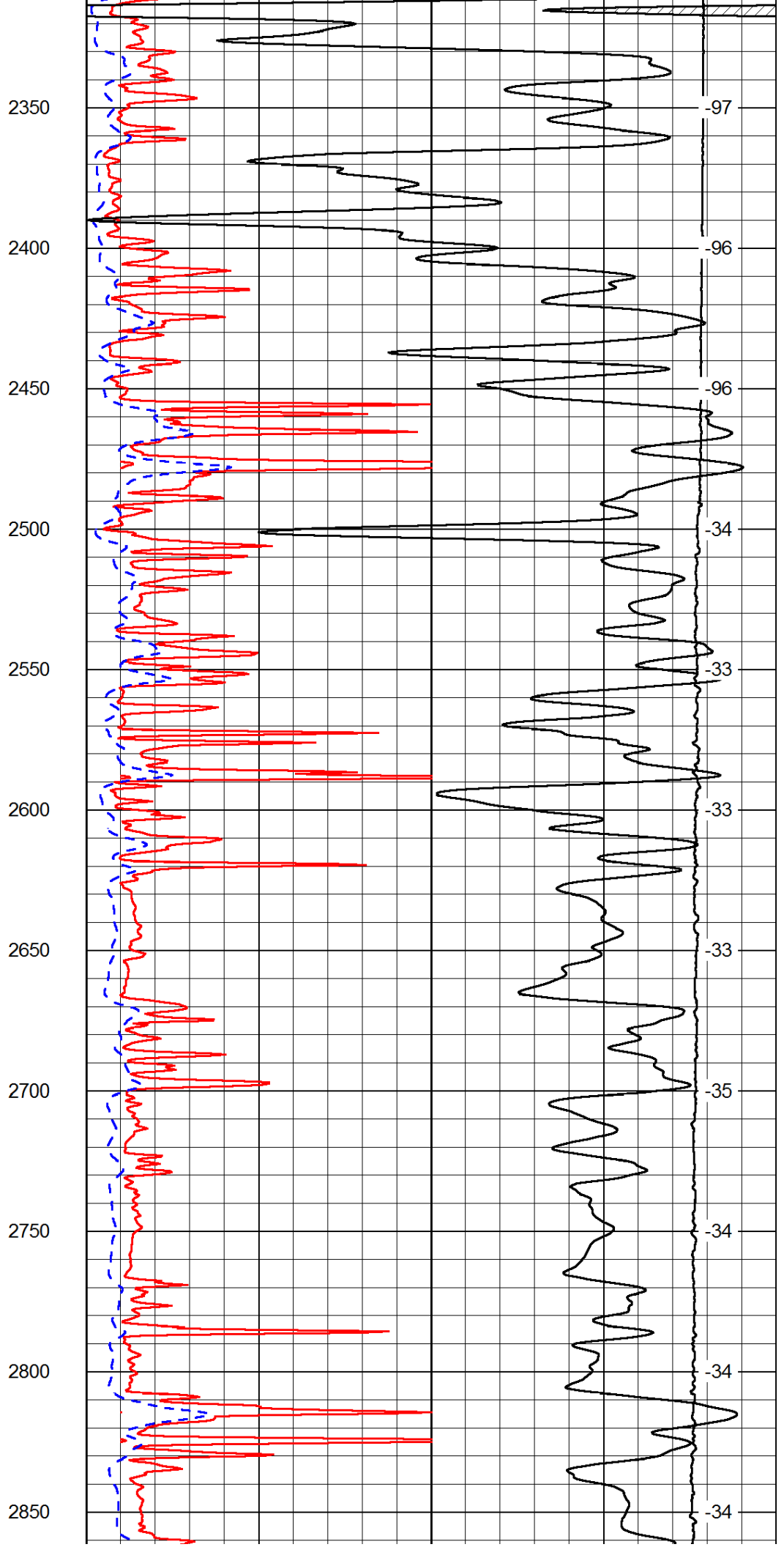
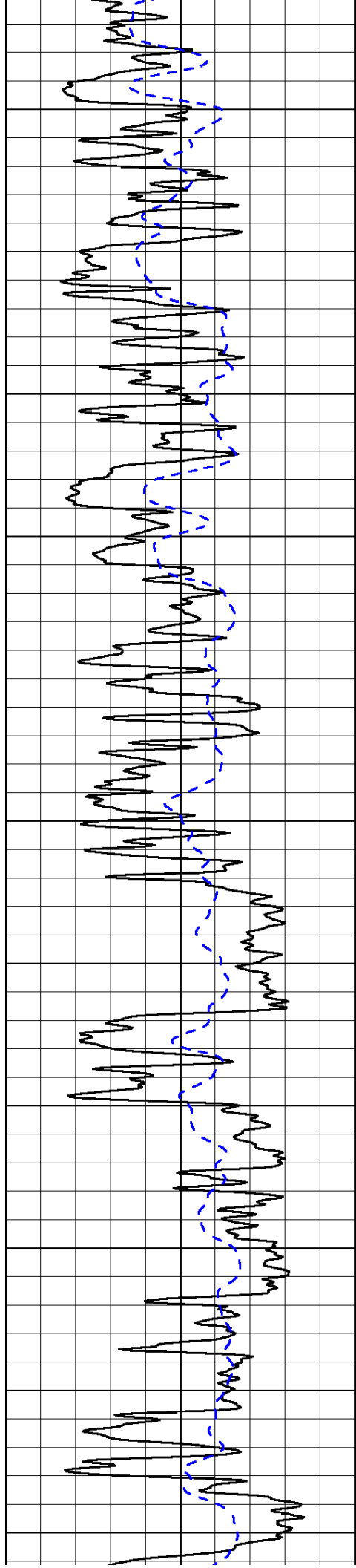
50	Shallow Resistivity	500
50	Deep Resistivity	500

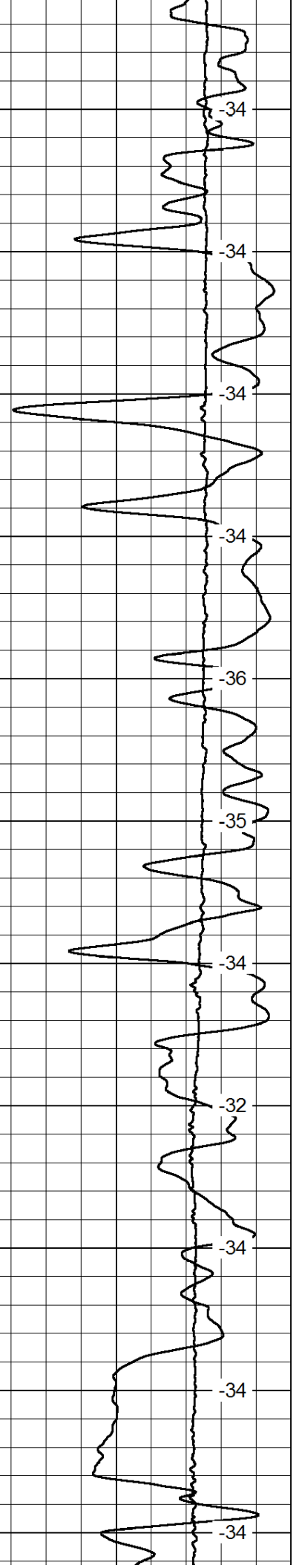
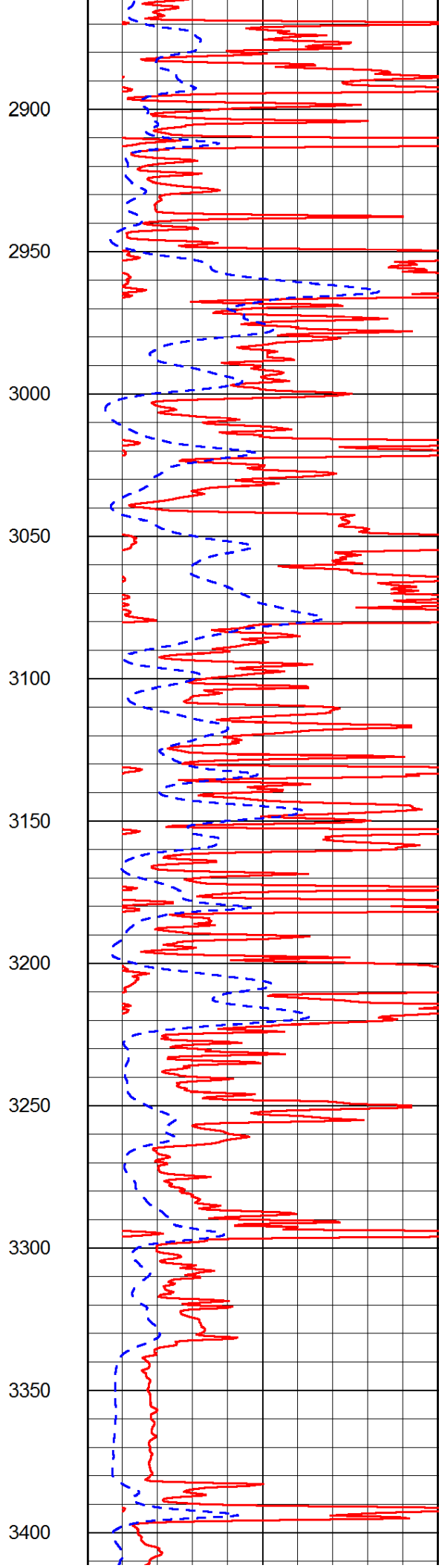
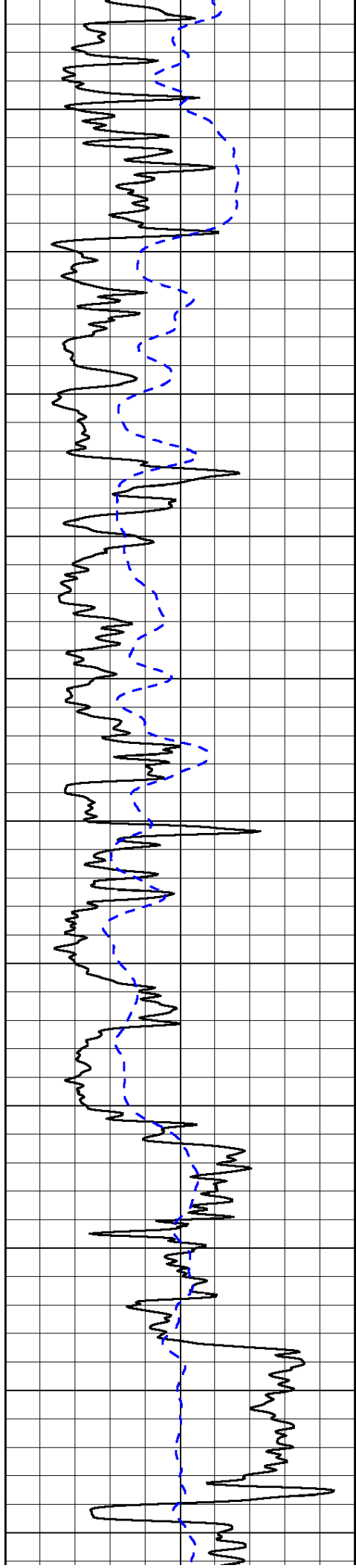


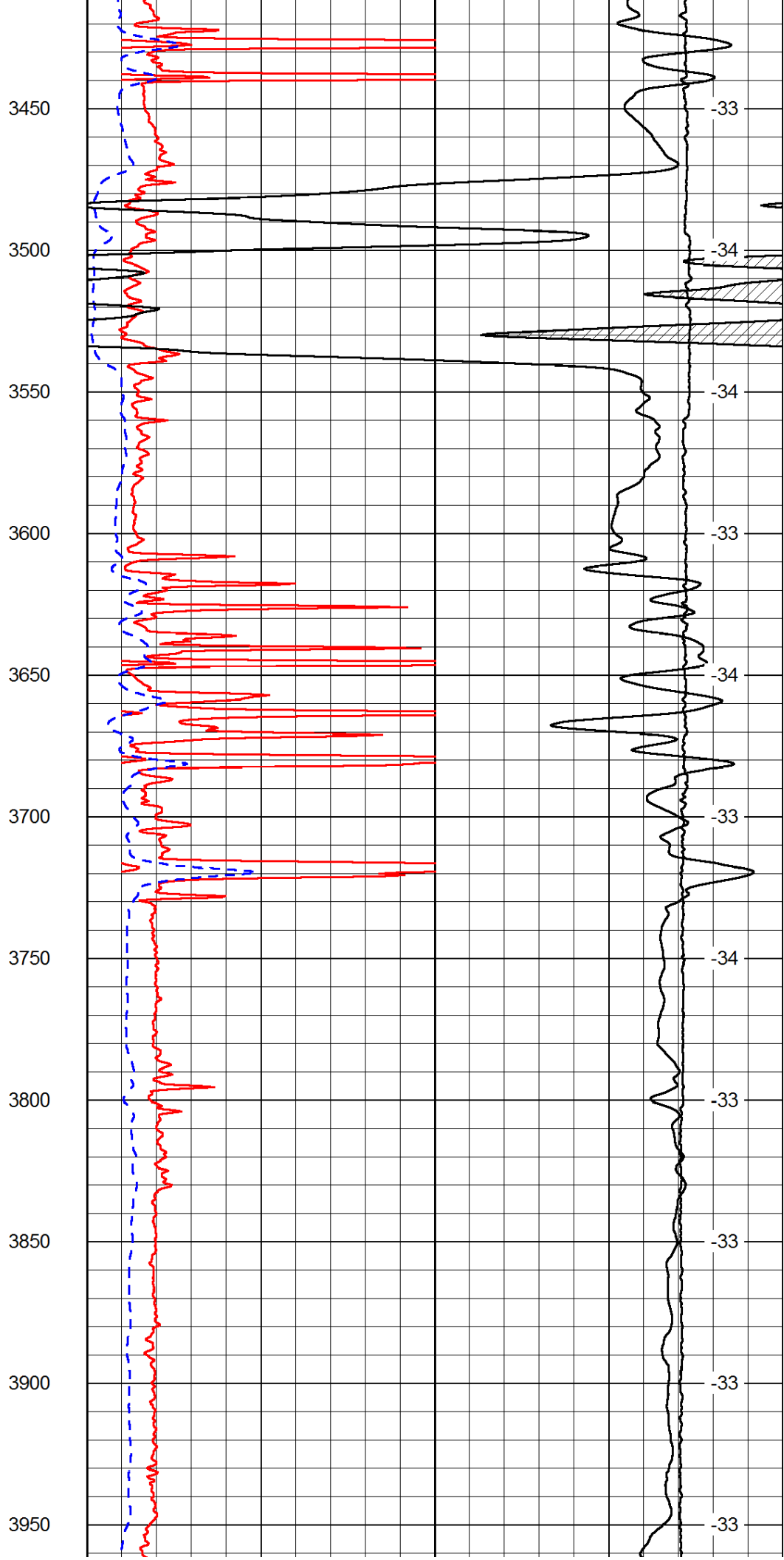
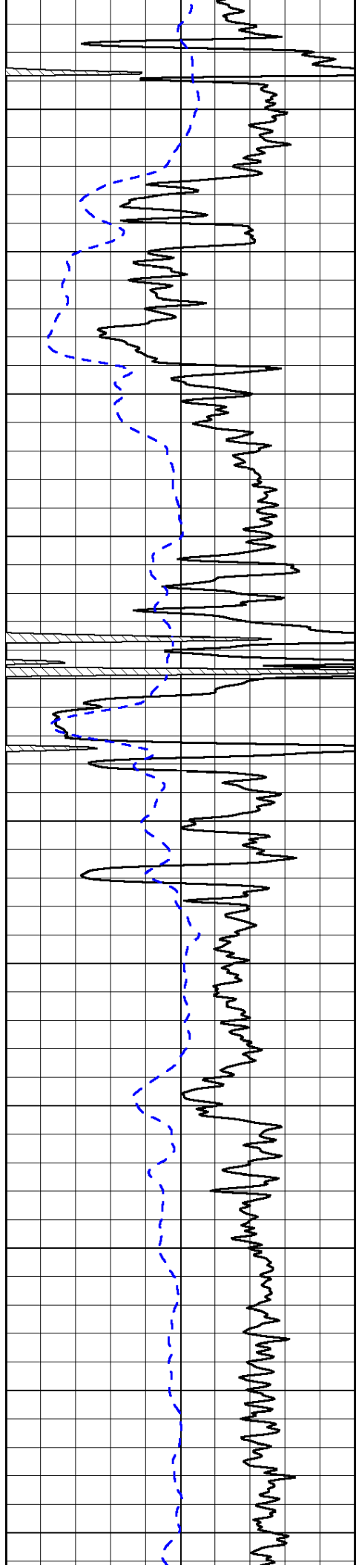


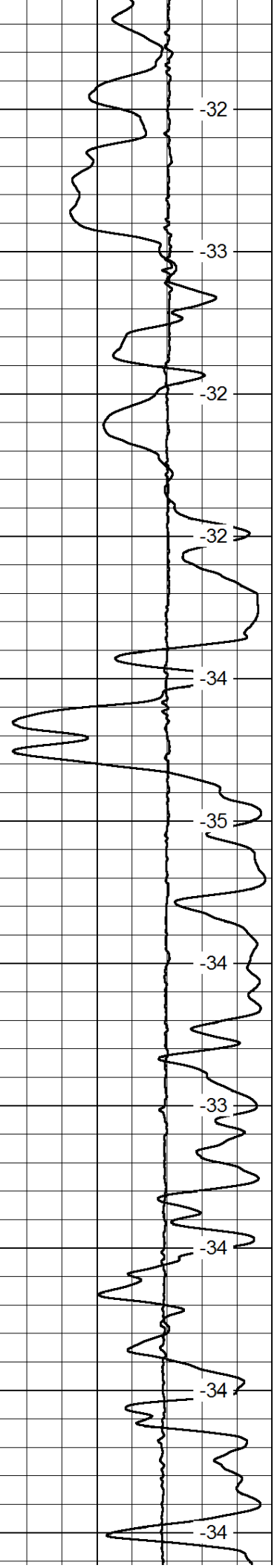
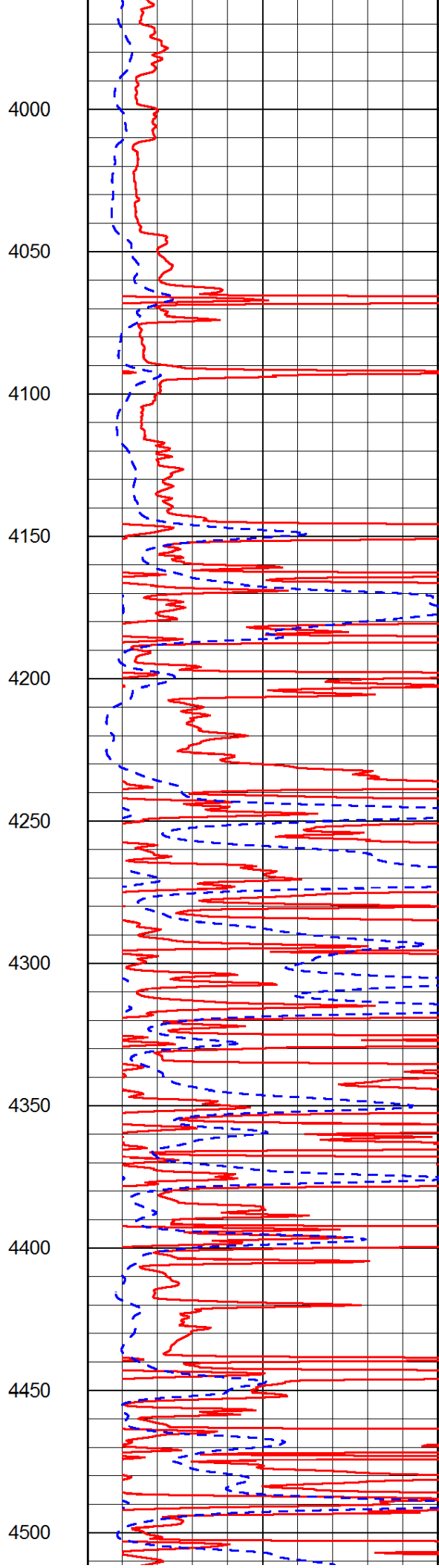
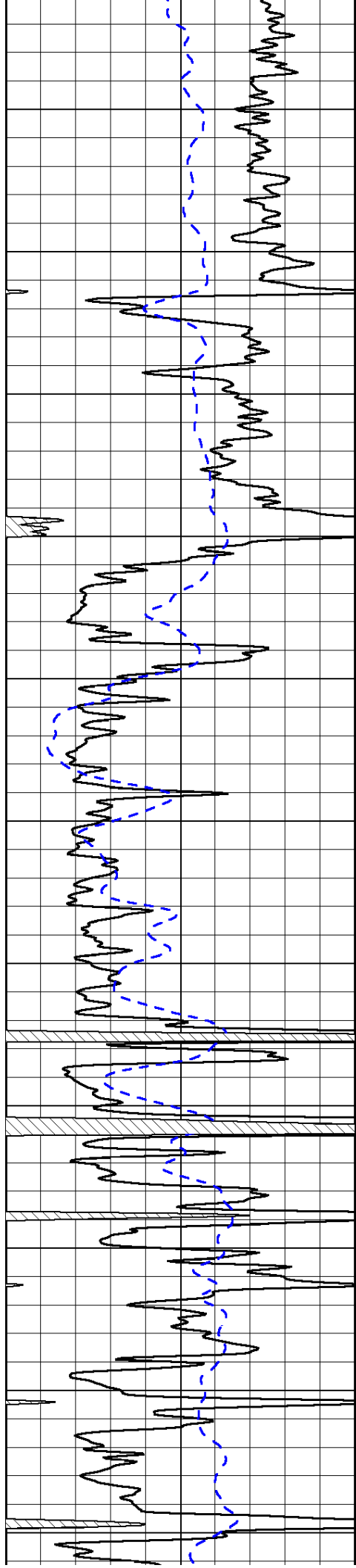


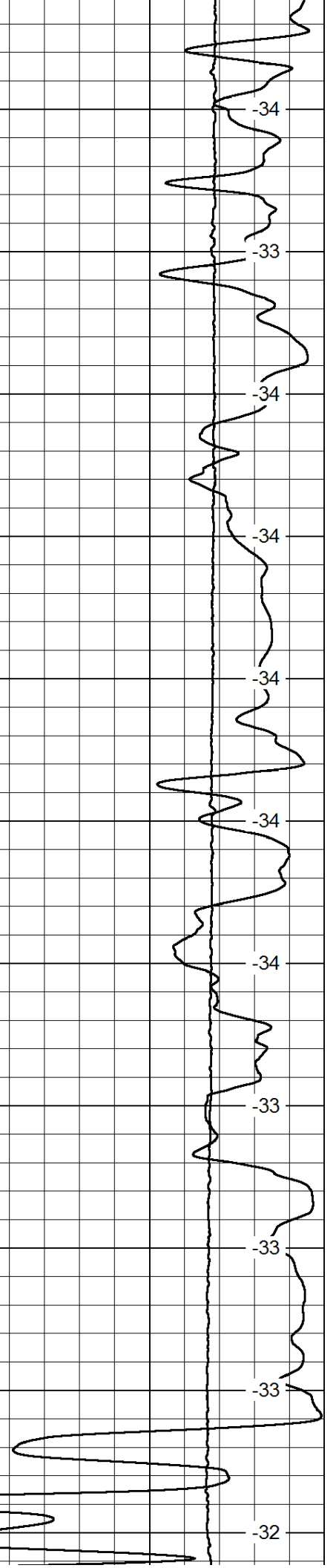
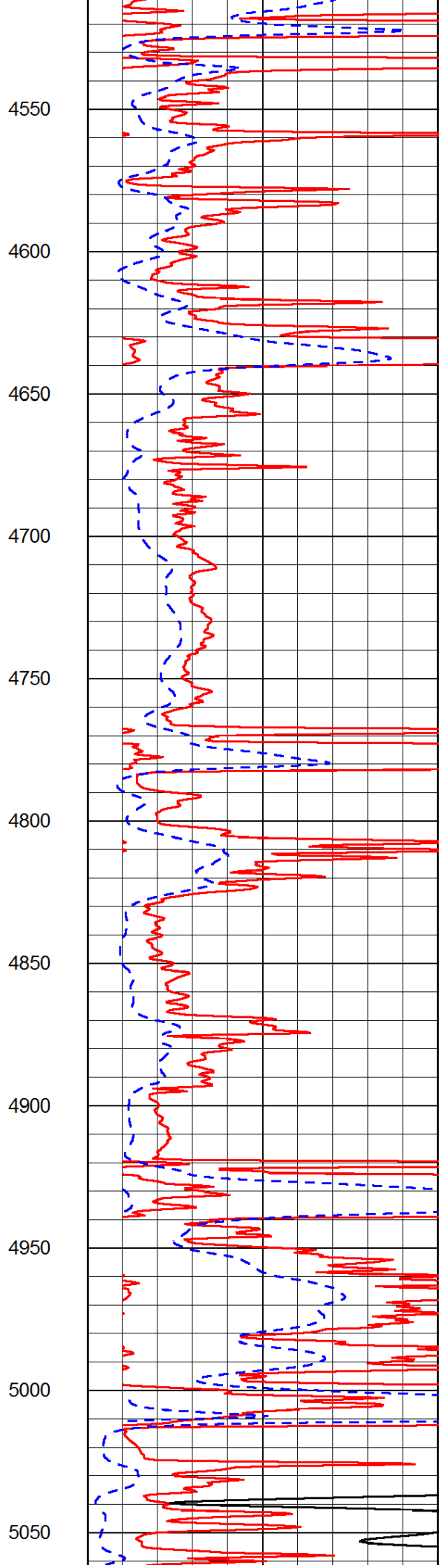
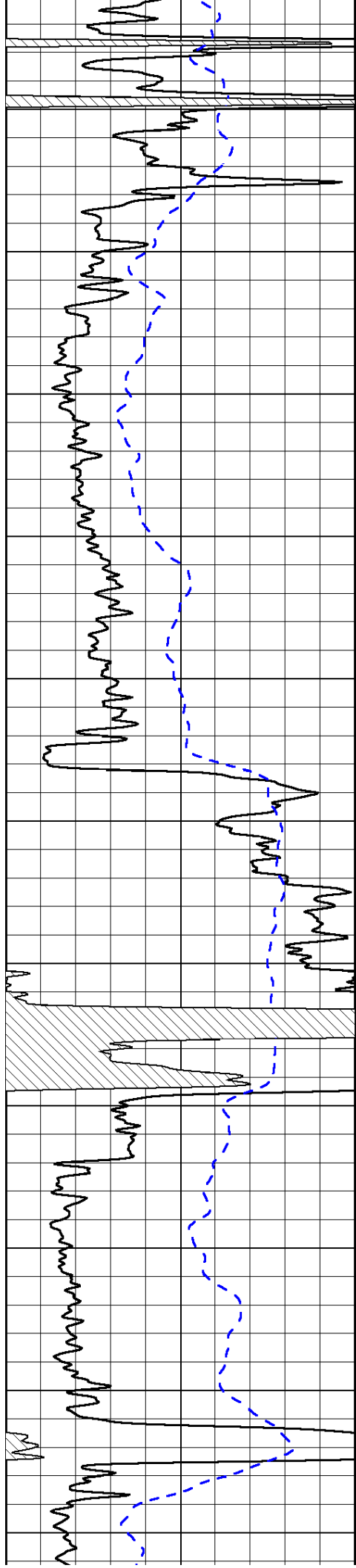


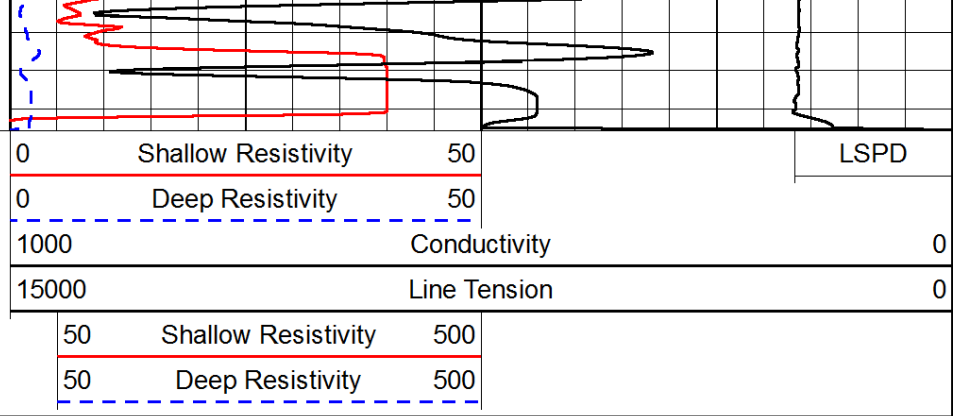
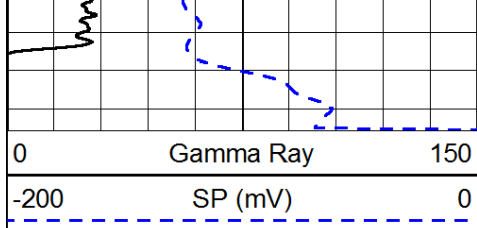




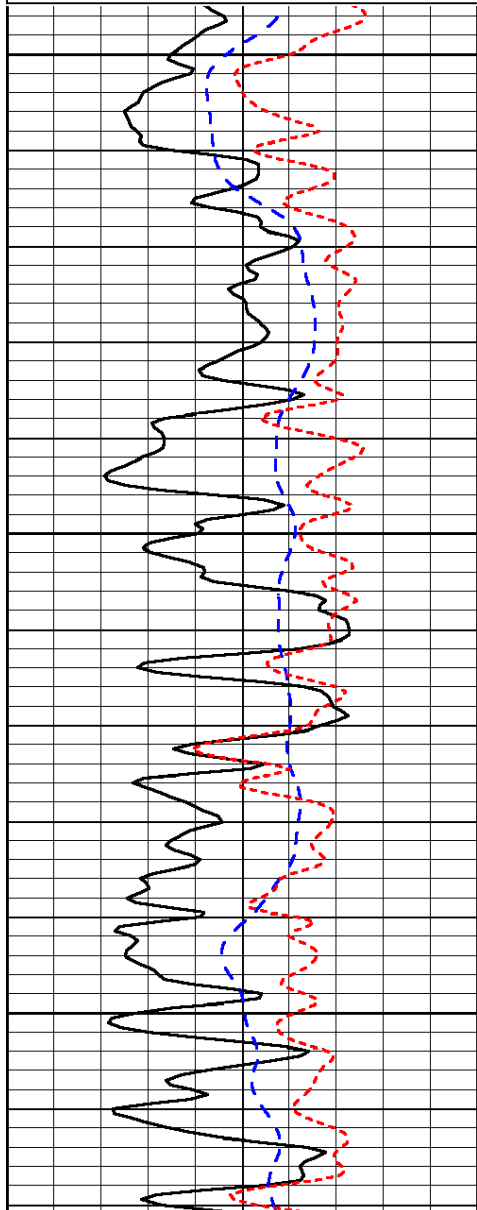
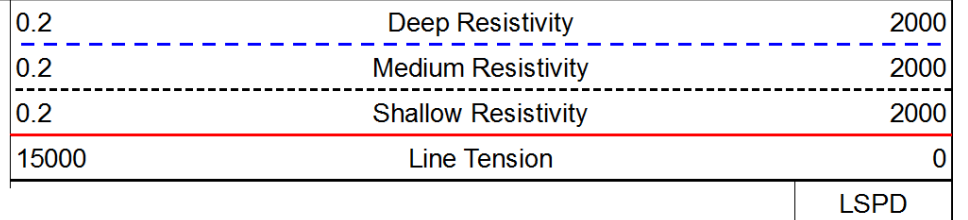
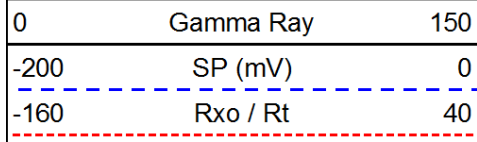








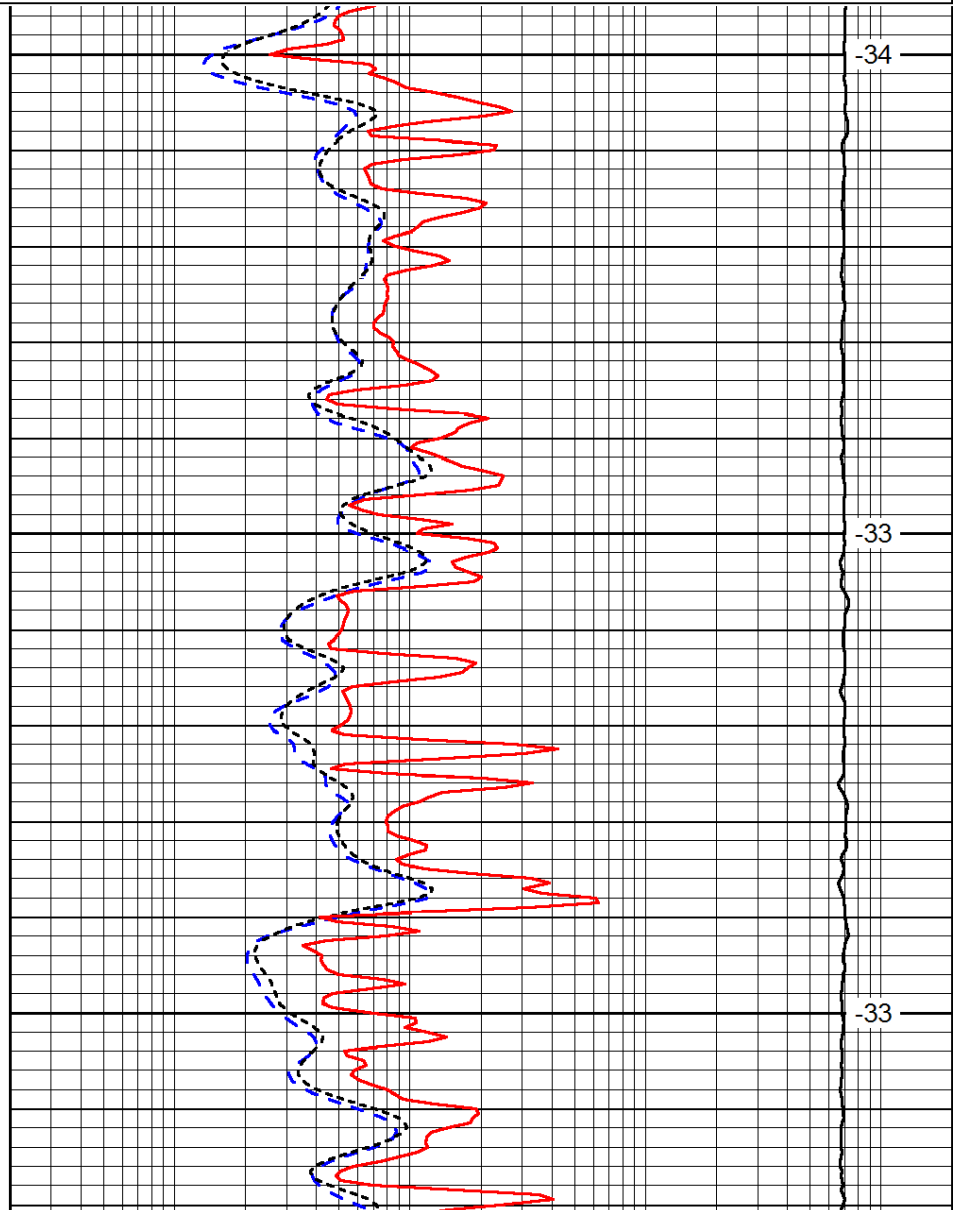
Database File: c:\warrior\data\n-10 exploration_medicine river ranch b #10\n10_hd.db
 Dataset Pathname: dil/n10main
 Presentation Format: dil
 Dataset Creation: Thu Apr 19 08:50:41 2012
 Charted by: Depth in Feet scaled 1:240



2500

2550

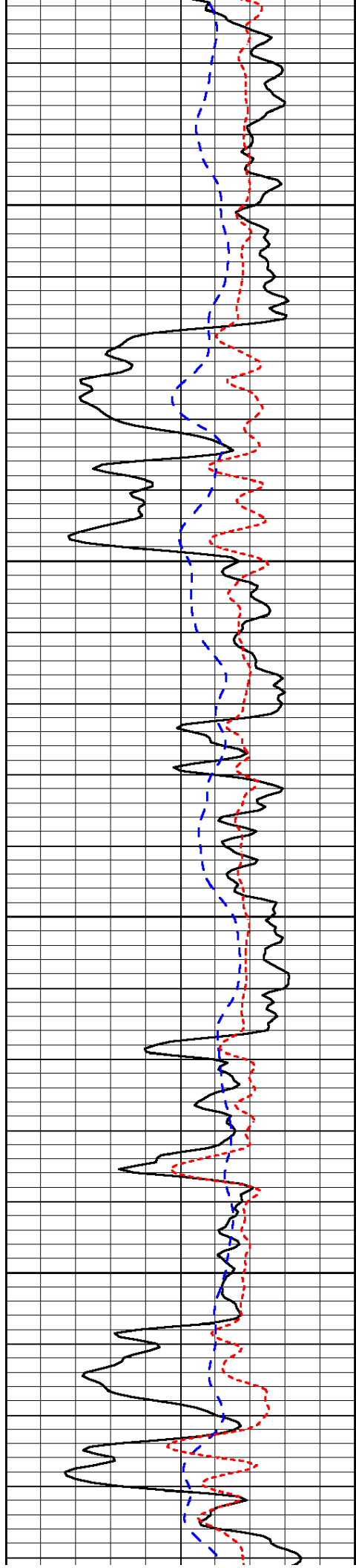
2600



-34

-33

-33

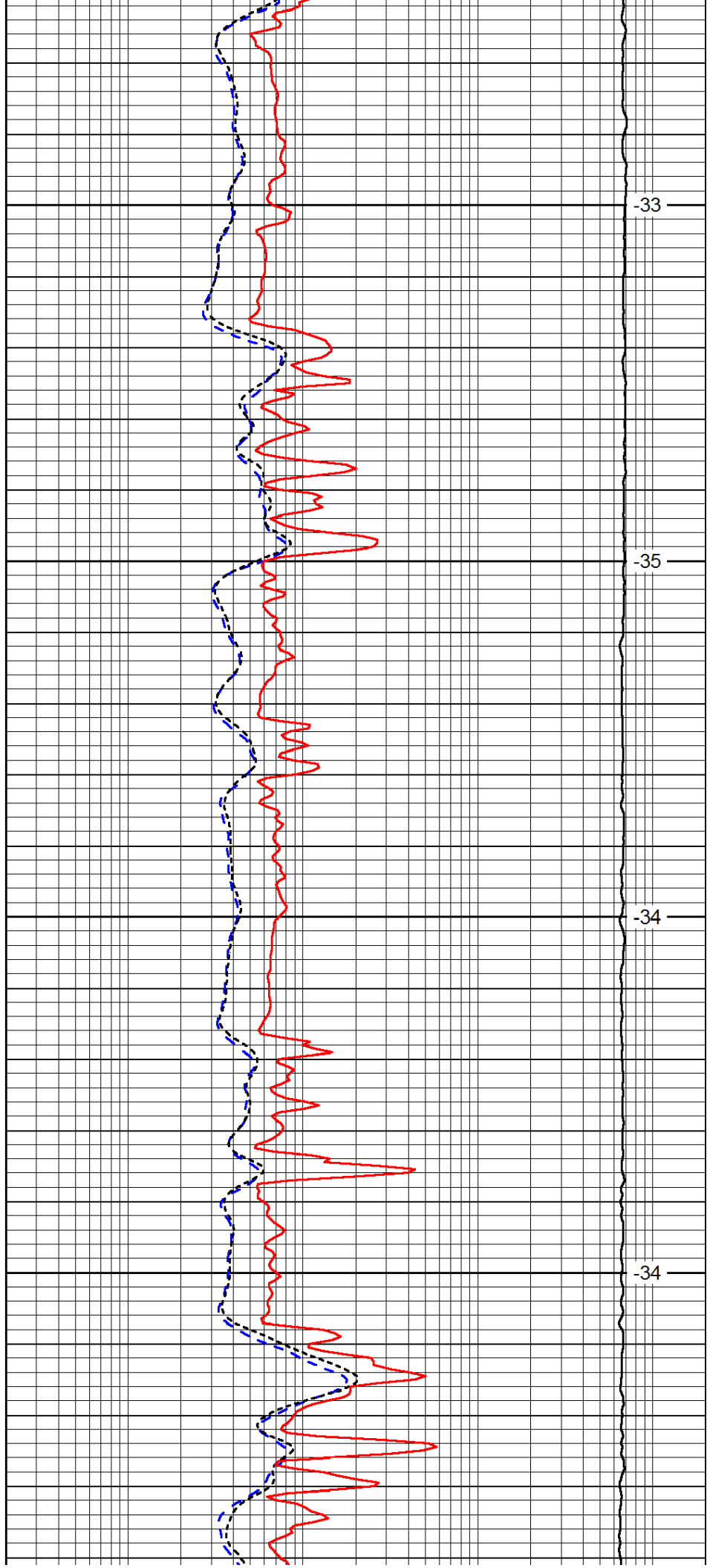


2650

2700

2750

2800

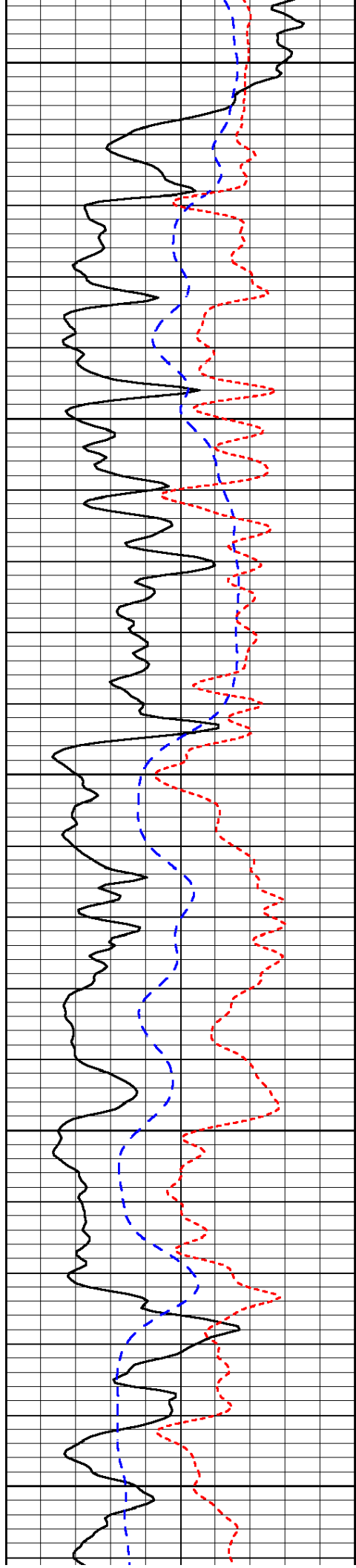


-33

-35

-34

-34



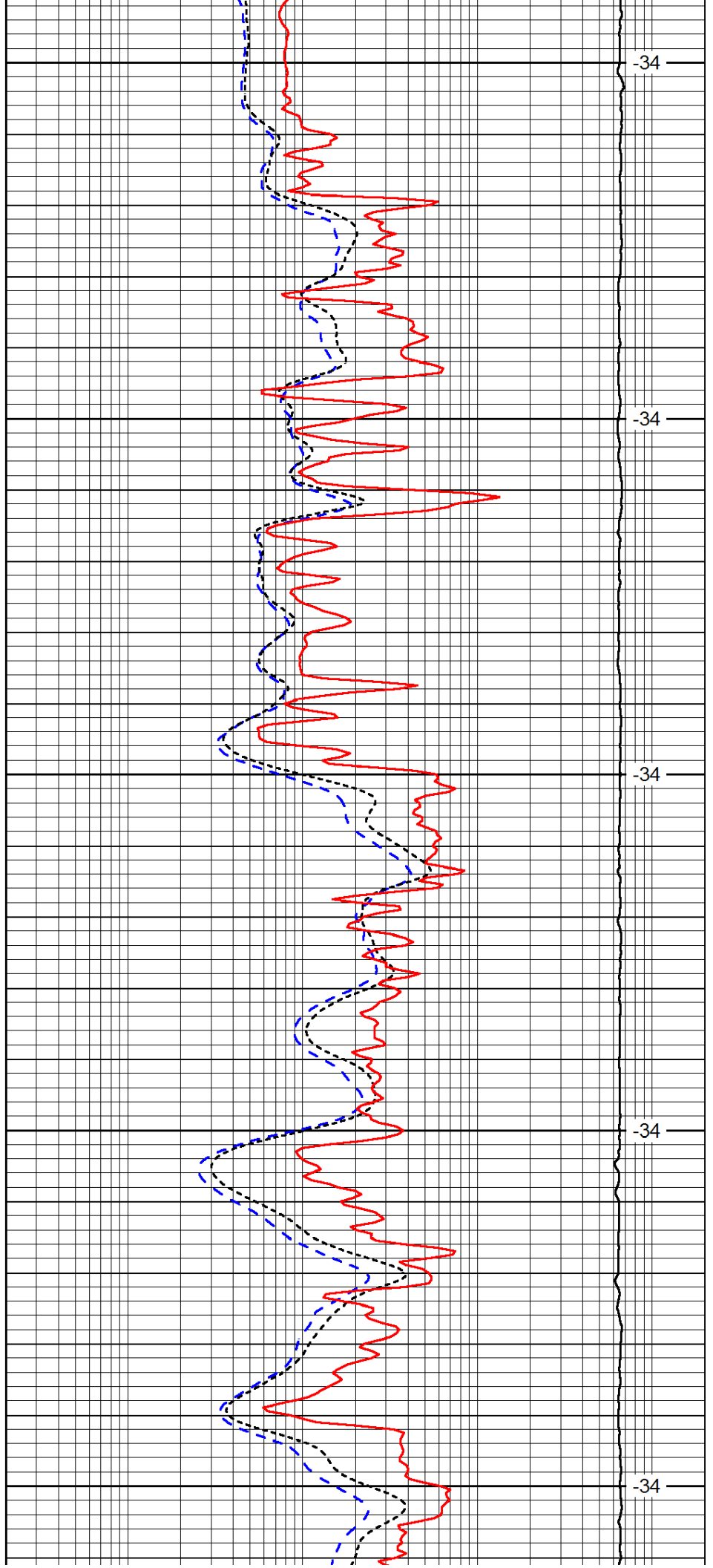
2850

2900

2950

3000

3050



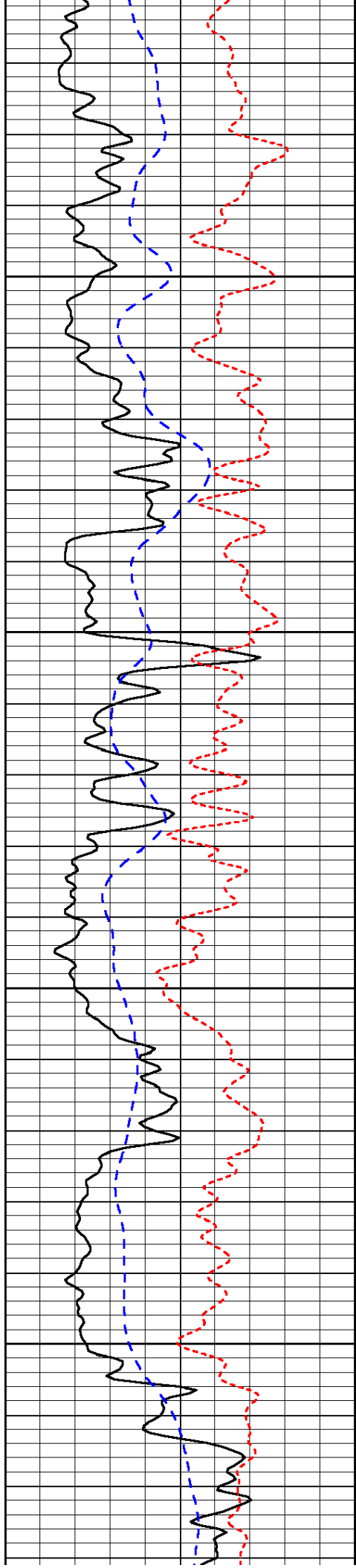
-34

-34

-34

-34

-34

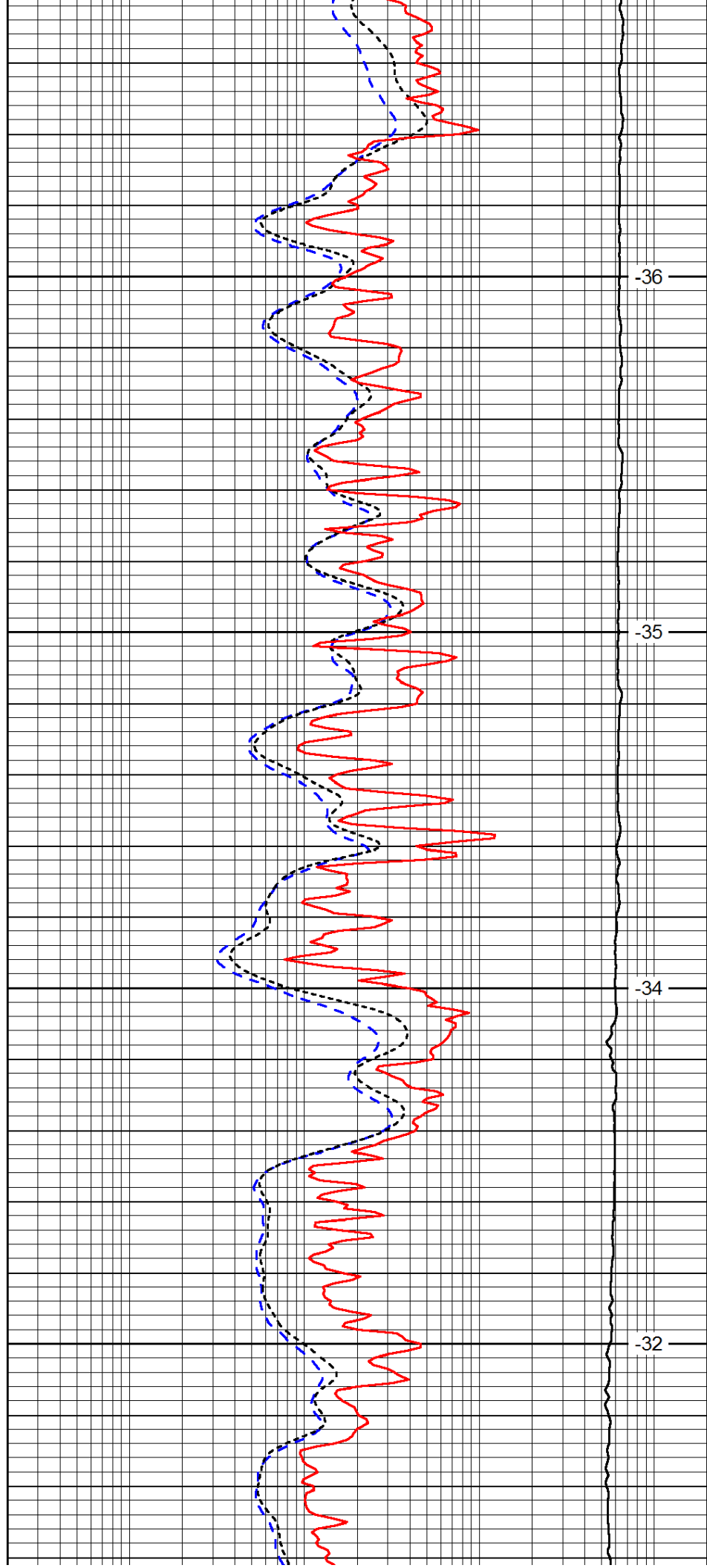


3100

3150

3200

3250

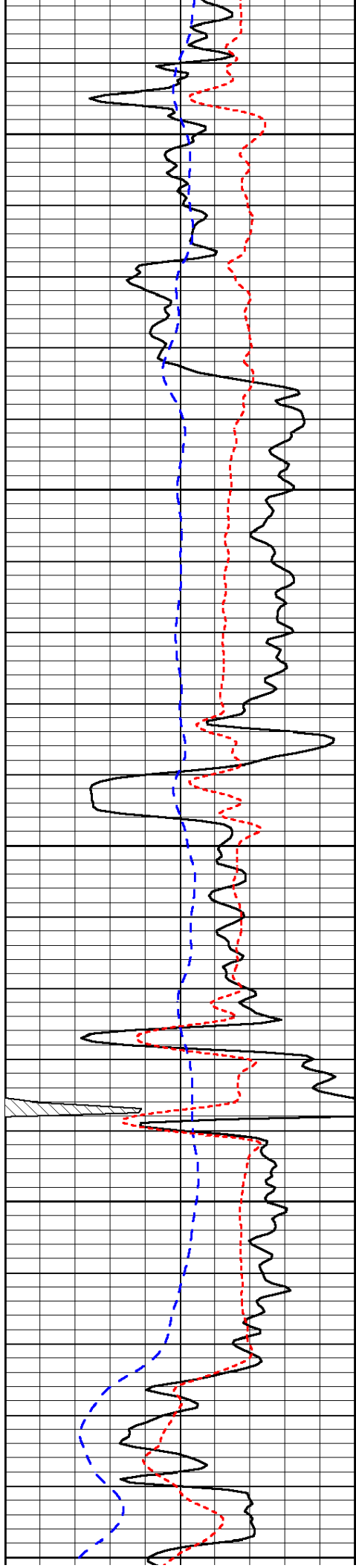


-36

-35

-34

-32



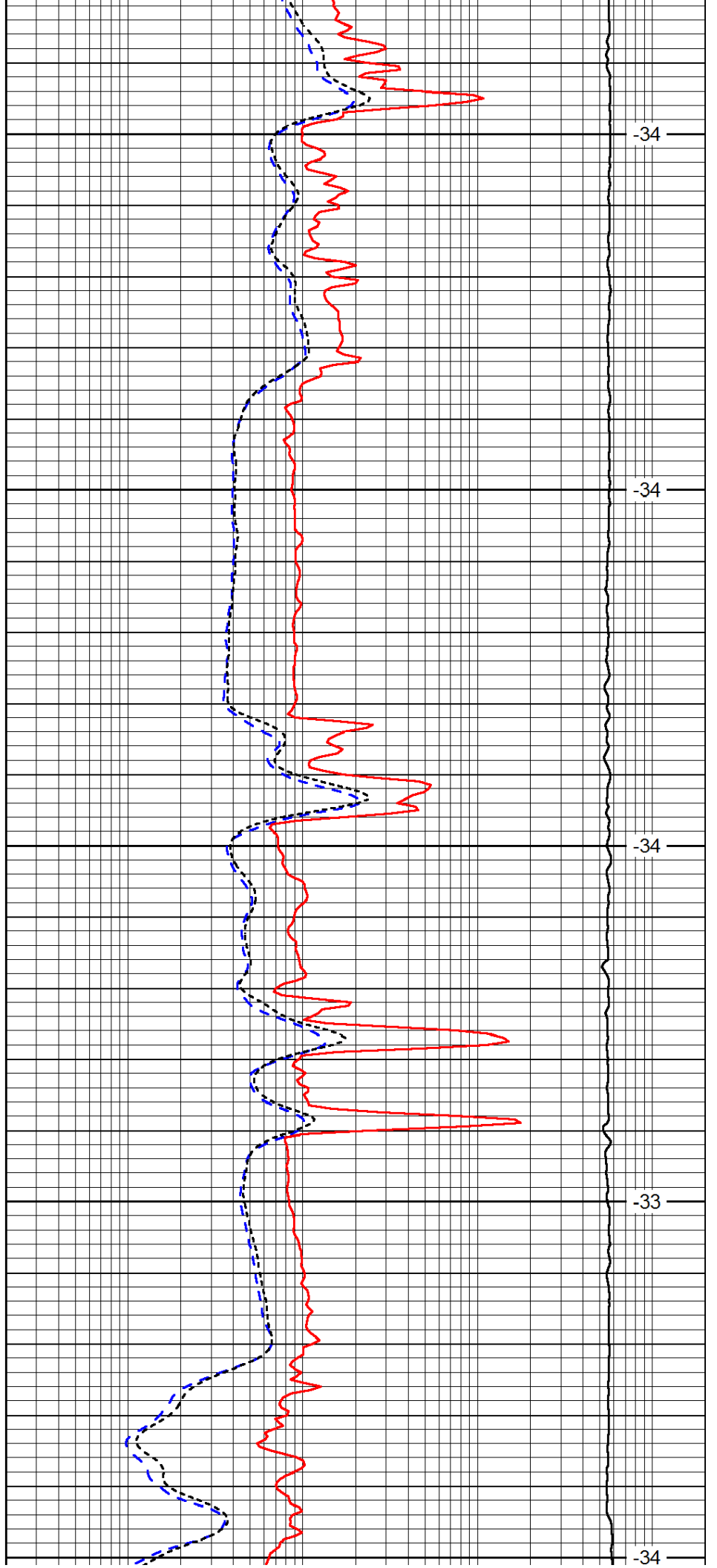
3300

3350

3400

3450

3500



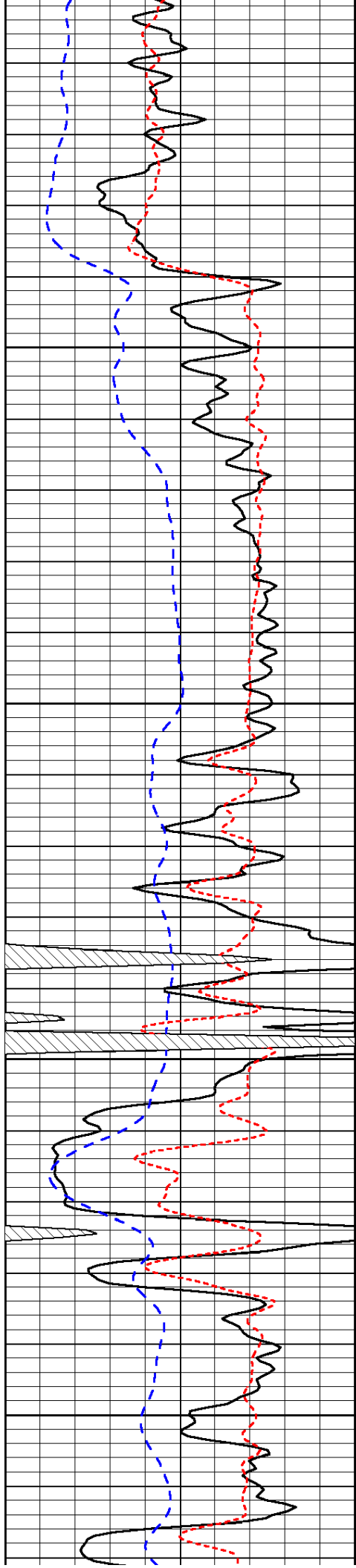
-34

-34

-34

-33

-34

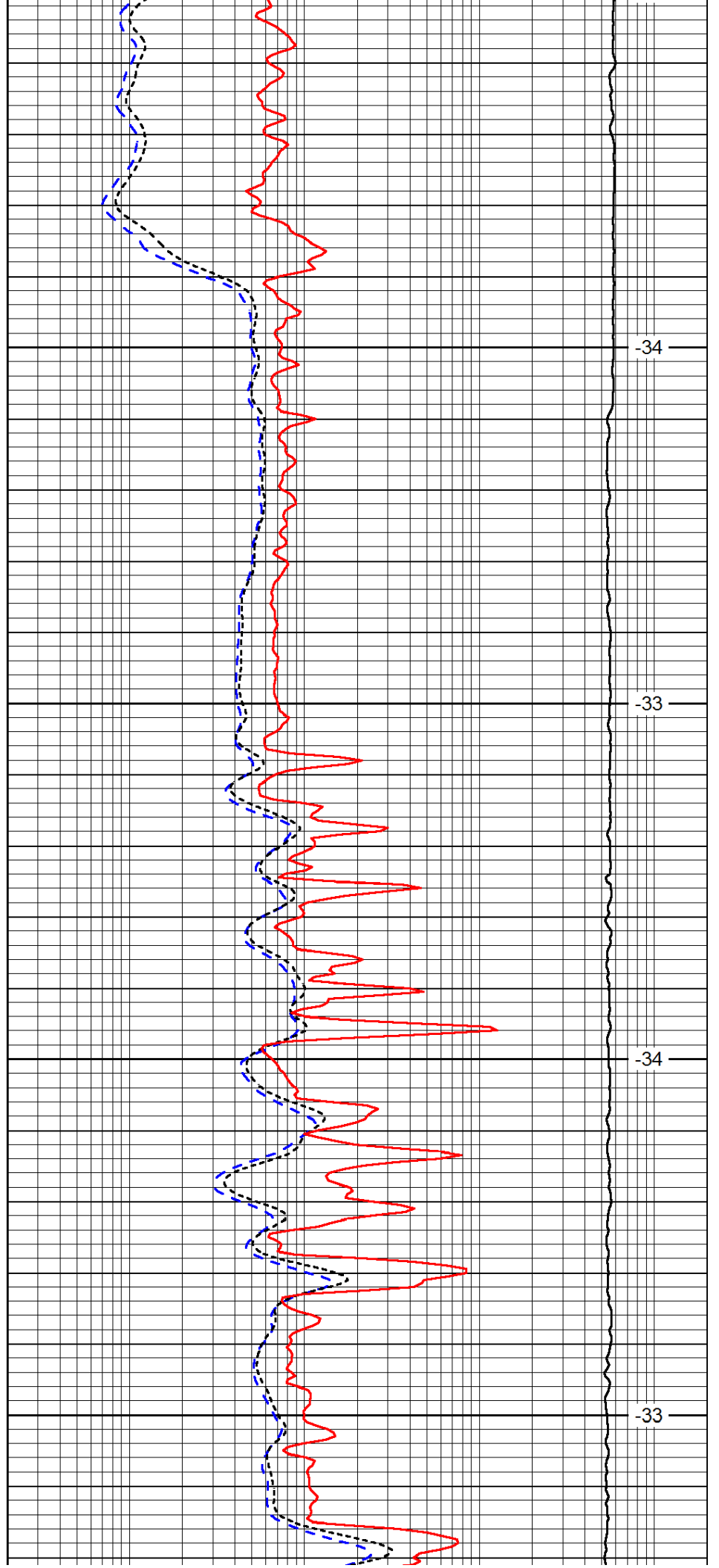


3550

3600

3650

3700

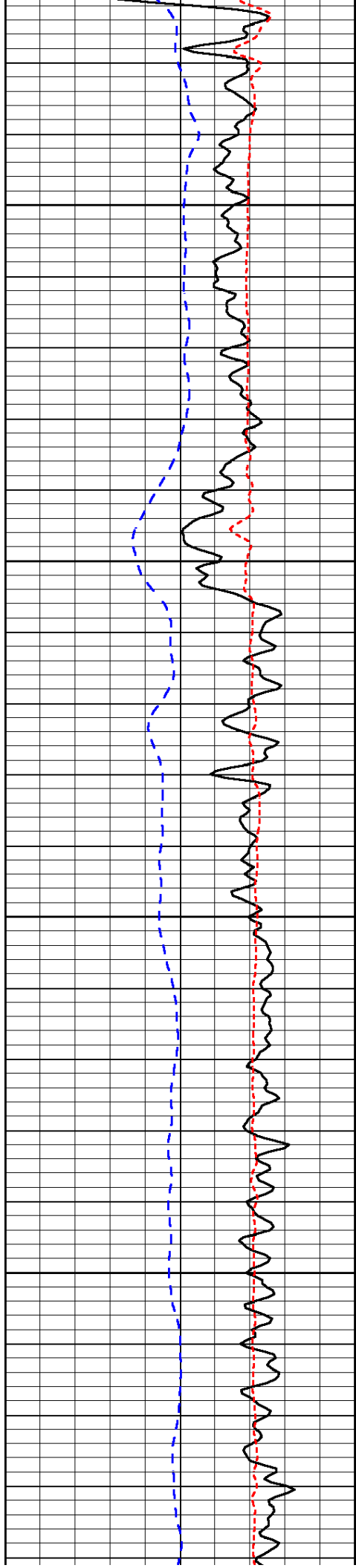


-34

-33

-34

-33

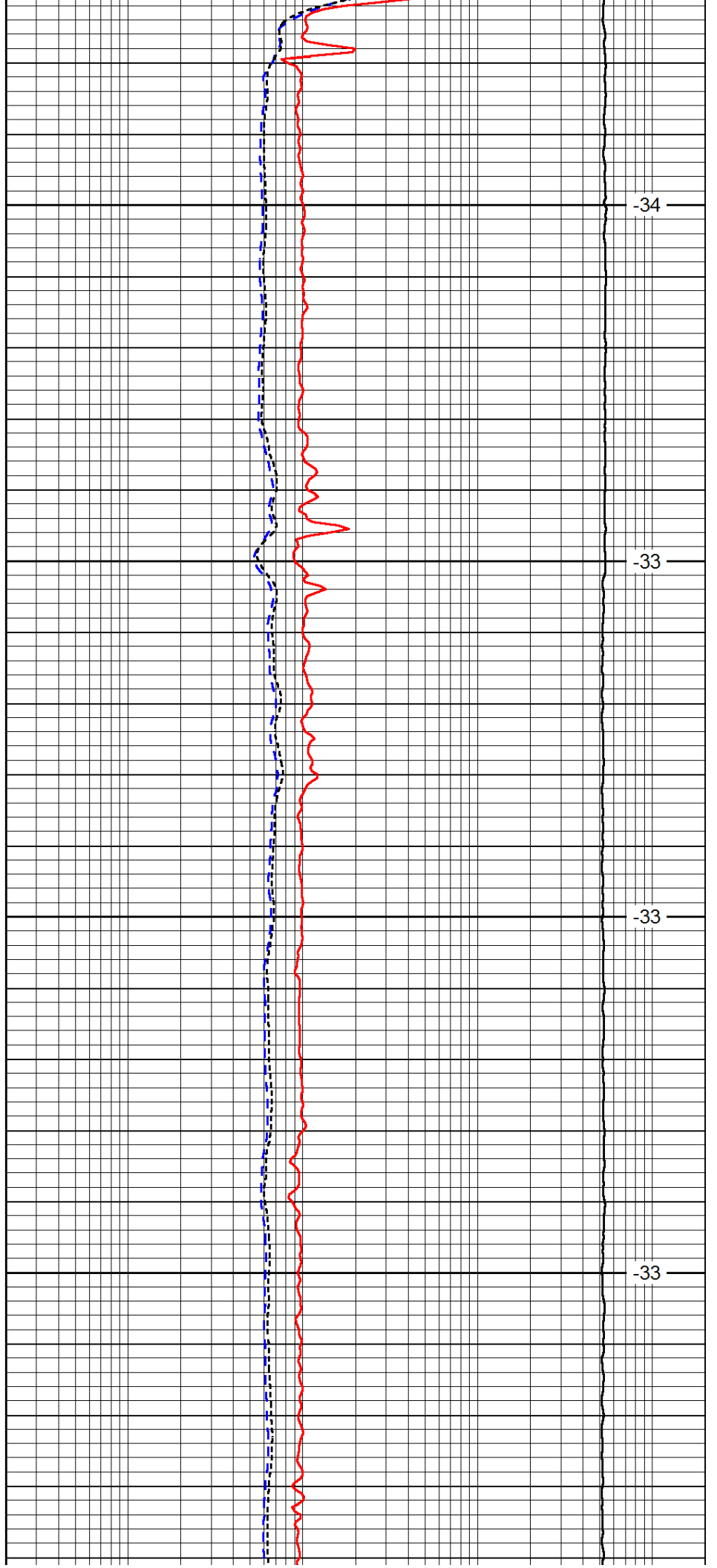


3750

3800

3850

3900

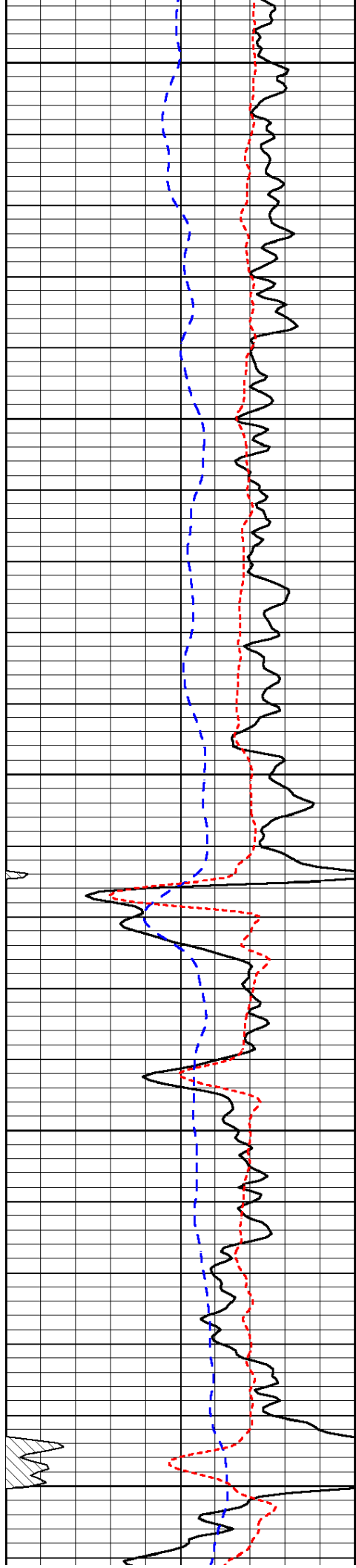


-34

-33

-33

-33



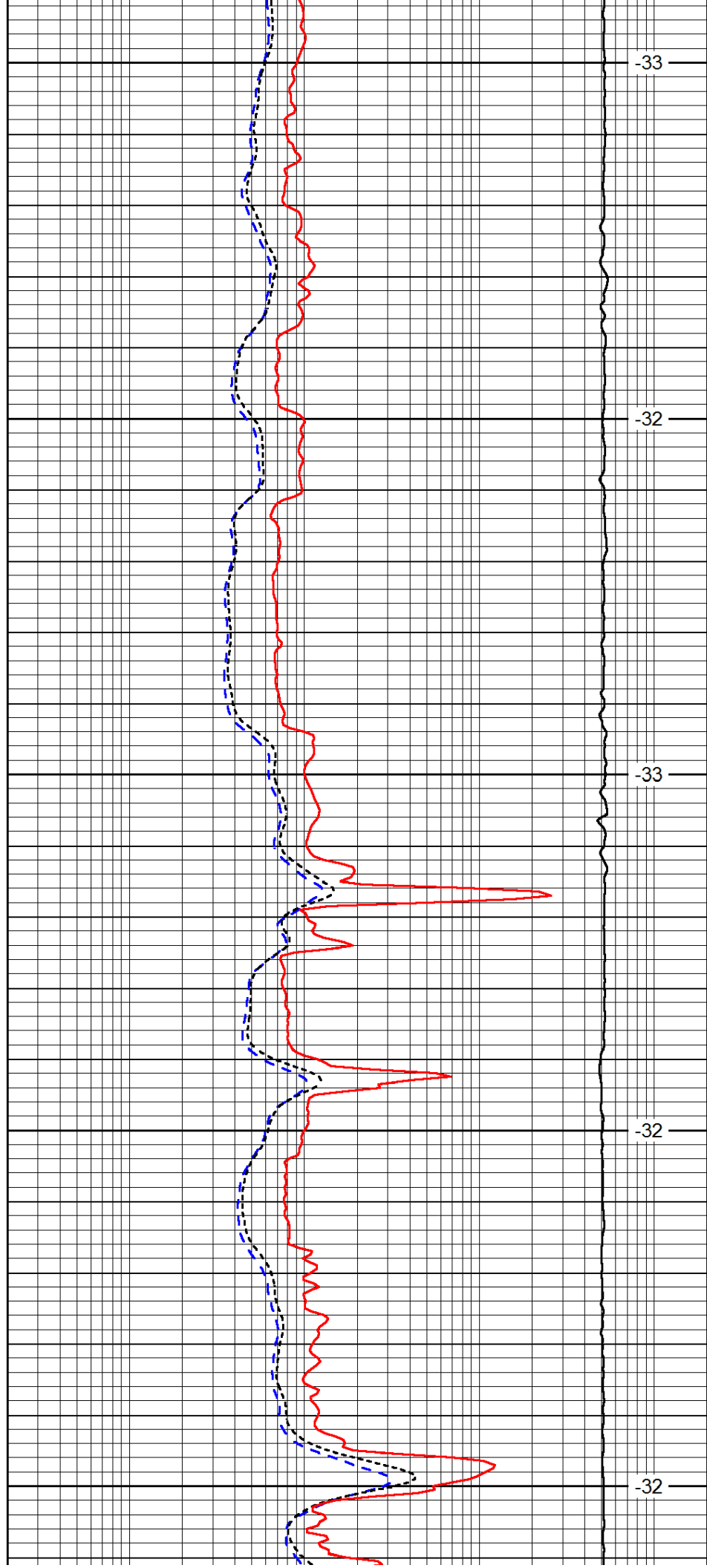
3950

4000

4050

4100

4150



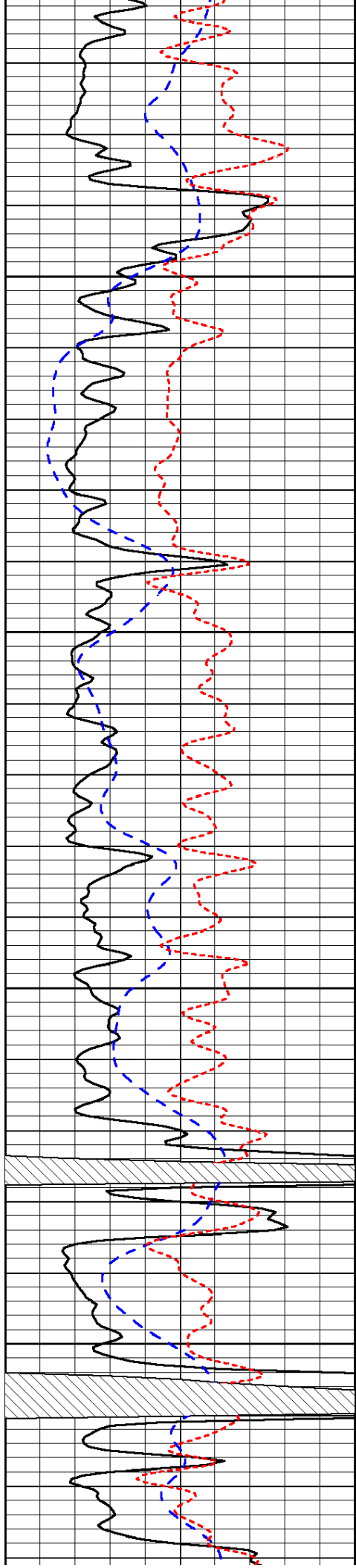
-33

-32

-33

-32

-32

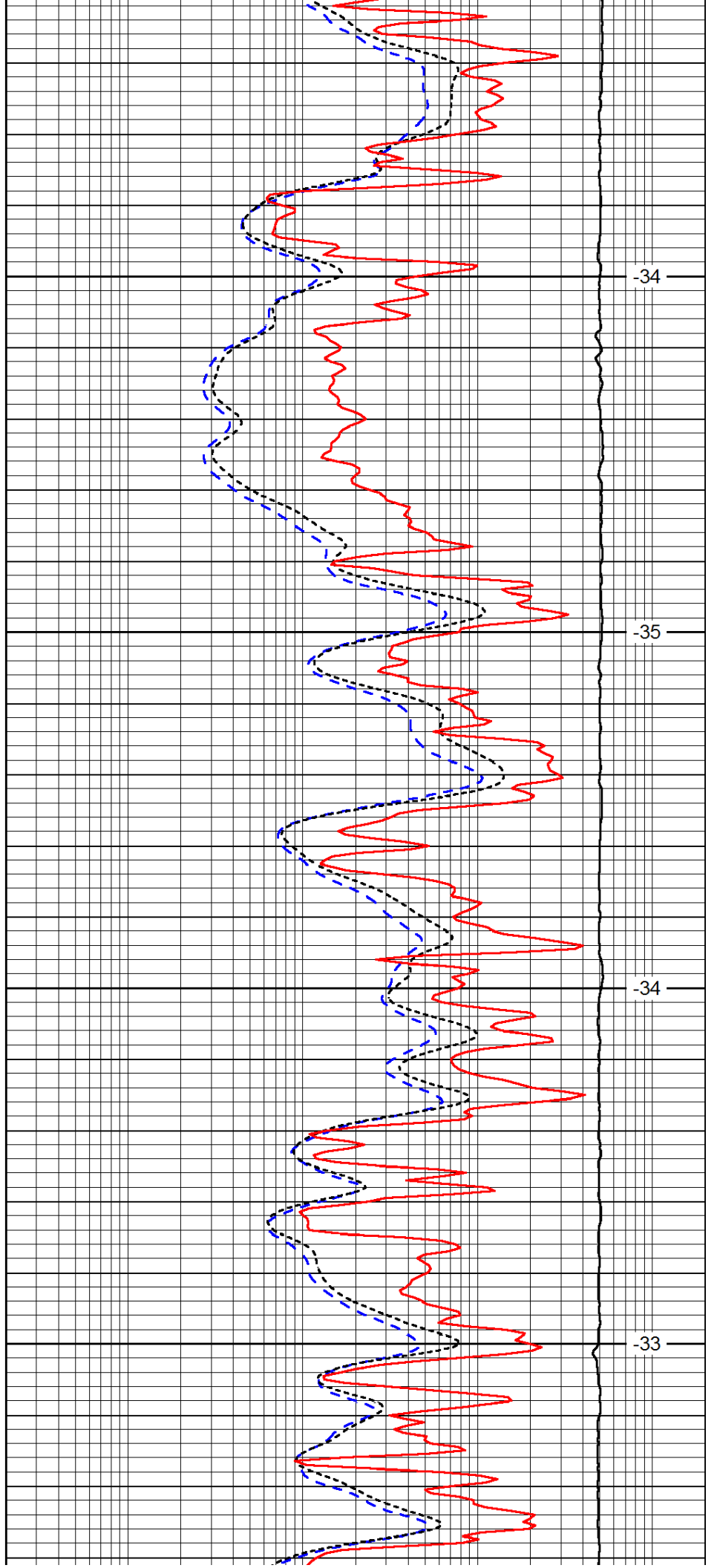


4200

4250

4300

4350

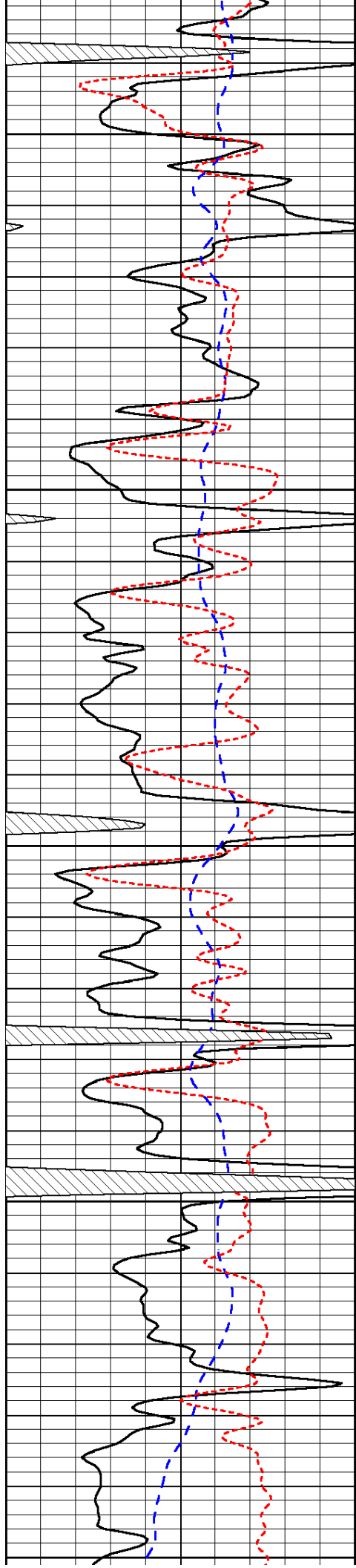


-34

-35

-34

-33



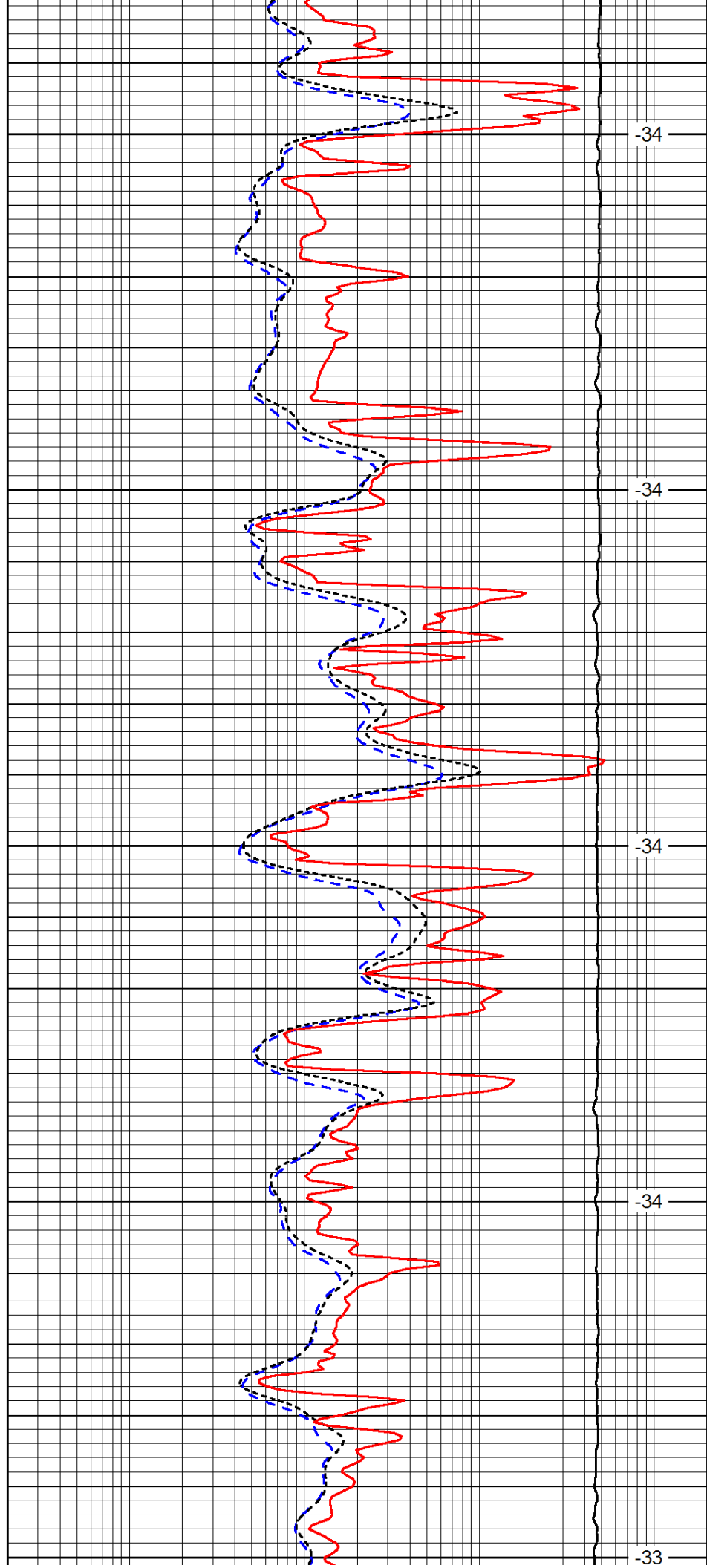
4400

4450

4500

4550

4600



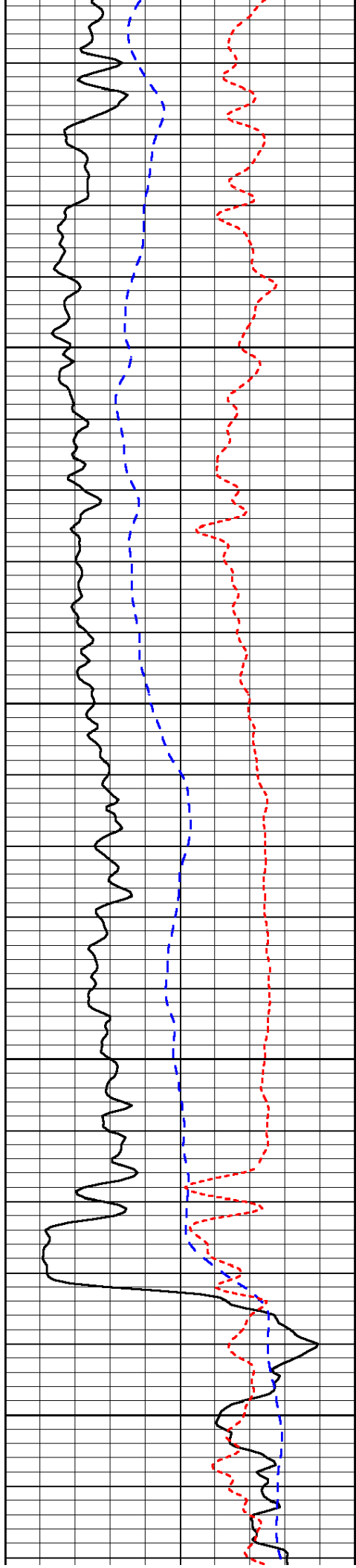
-34

-34

-34

-34

-33

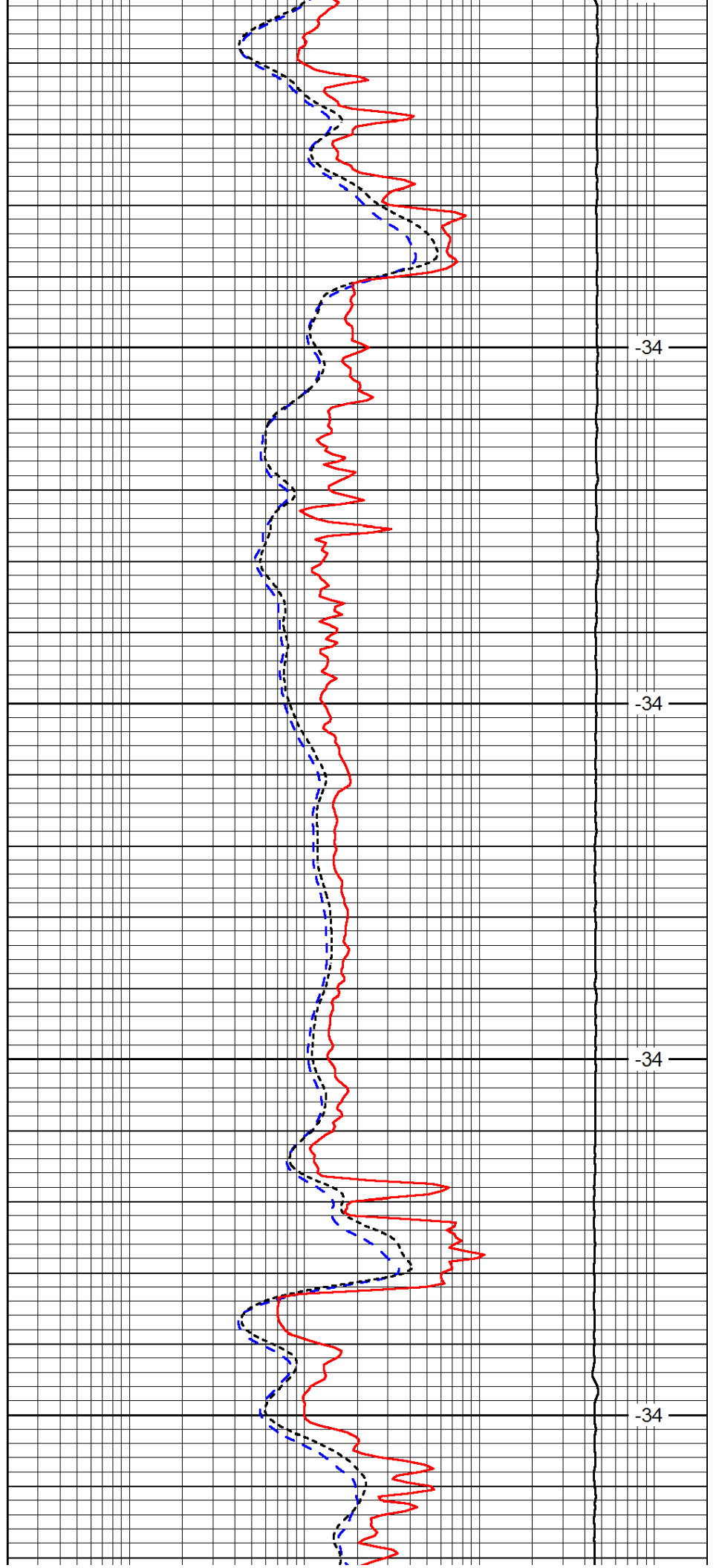


4650

4700

4750

4800

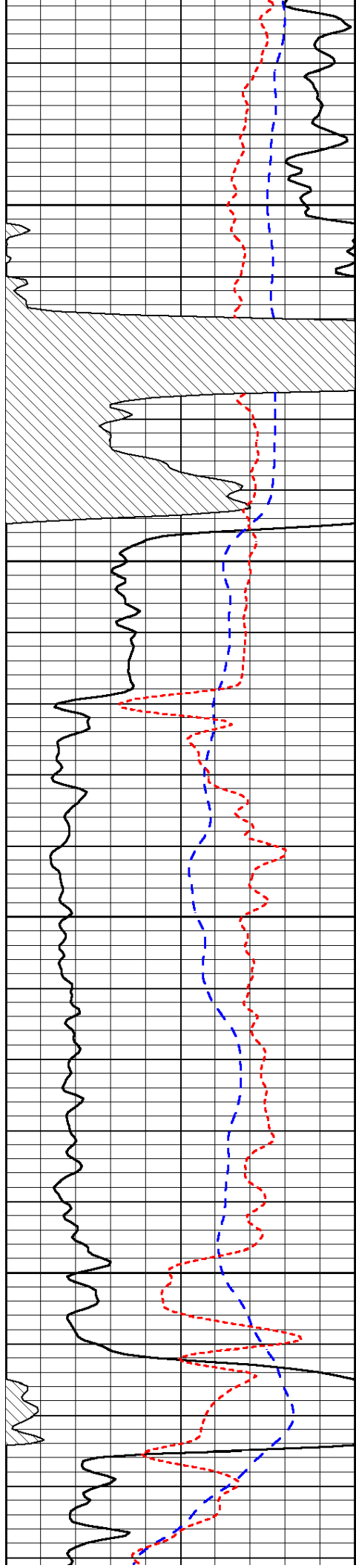


-34

-34

-34

-34

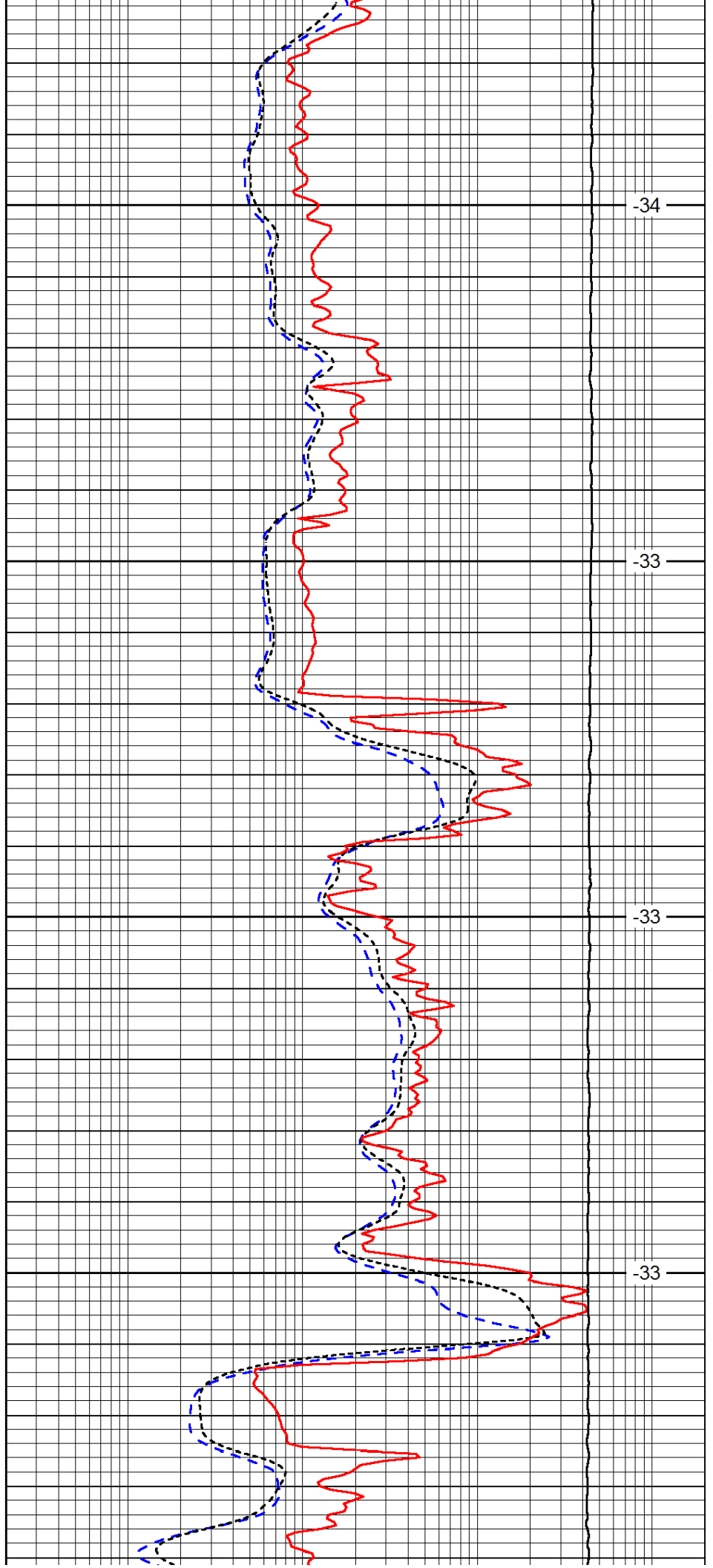


4850

4900

4950

5000

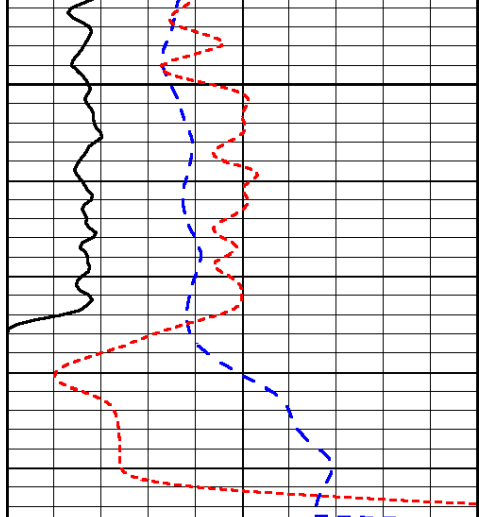


-34

-33

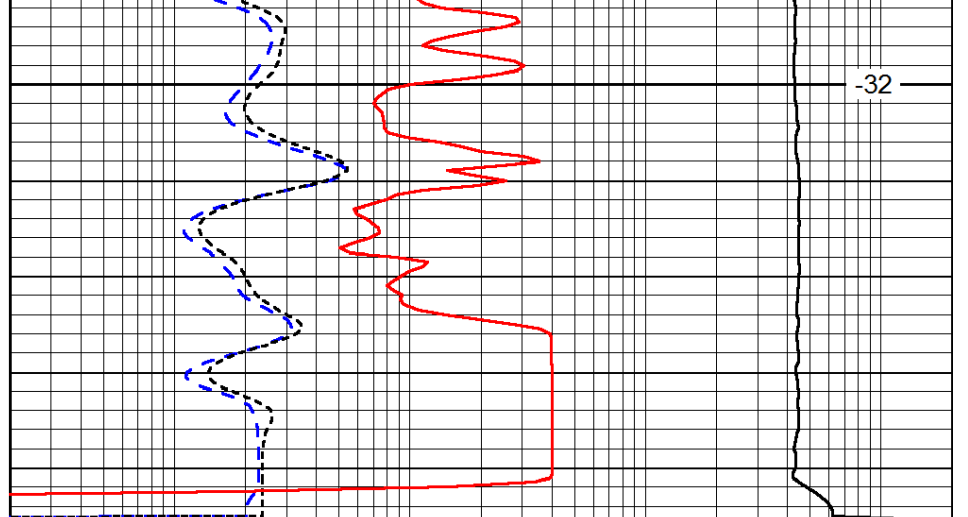
-33

-33



0	Gamma Ray	150
-200	SP (mV)	0
-160	Rxo / Rt	40

5050



0.2	Deep Resistivity	2000
0.2	Medium Resistivity	2000
0.2	Shallow Resistivity	2000
15000	Line Tension	0

LSPD