



MIDWEST SURVEYS
 LOGGING - PERFORATING - CONSULTING SERVICES
 P.O. Box 68, Osawatomie, KS 66064
 913 / 755 - 2128

GAMMA RAY / NEUTRON / CCL

File No. Company Altavista Energy, Inc.
 Well Bivins No. AI-22
 Field Paola - Rantoul
 County Franklin State Kansas

Location 1405 FSL & 4405 FEL
 SW-SE-NW-SW

Sec. 18 Typ. 16s Rge. 21e
 Permanent Datum GL Elevation NA
 Log Measured From GL K.B. NA
 Drilling Measured From GL D.F. NA
 G.L. NA

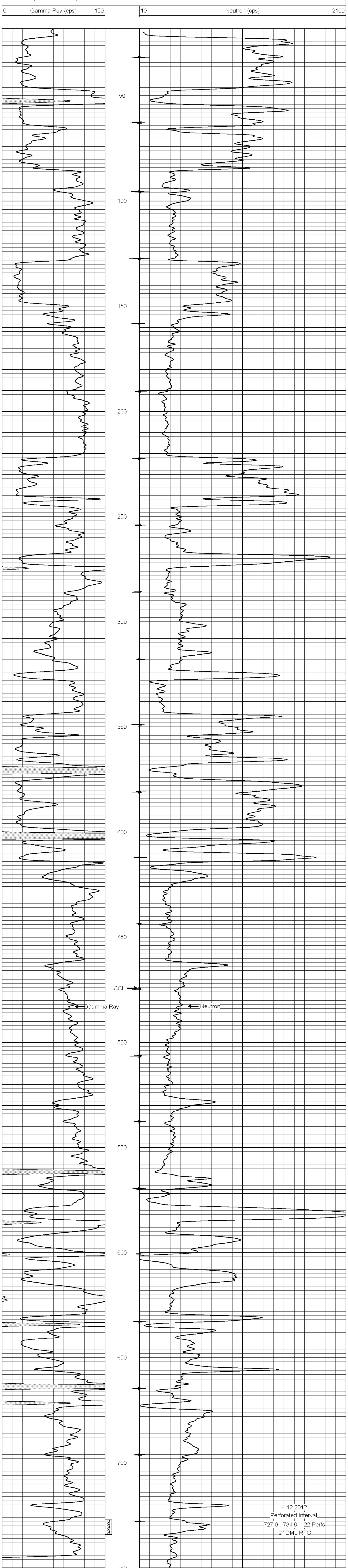
Date 01-27-2012
 Run Number One
 Depth Driller 810.0
 Depth Logger 792.7
 Bottom Logged Interval 751.7
 Top Log Interval 20.0
 Fluid Level Full

| BORE-HOLE RECORD | | | | CASING RECORD | | | |
|------------------|----------|------|--------|---------------|------|--------|--|
| RUN No. | BIT FROM | TO | SIZE | WGT. | FROM | TO | |
| One | 9.875" | 0.0 | 7.00" | 0.0 | 0.0 | 22.30 | |
| Two | 5.625" | 22.0 | 2.875" | 0.0 | 0.0 | 791.40 | |
| | | | Barite | Set | At | 790.25 | |

<<< Fold Here >>>
 All interpretations are opinions based on inferences from electrical or other measurements and we cannot and do not guarantee the accuracy or correctness of any interpretation, and we shall not, except in the case of gross or willful negligence on our part, be liable or responsible for any loss, costs, damages, or expenses incurred or sustained by anyone resulting from any interpretation made by any of our officers, agents or employees. These interpretations are also subject to our general terms and conditions set out in our current Price Schedule.

Comments
 Drilling Contractor :
 Town Oilfield Services, Inc.

Database File: bivins22ai.db
 Dataset Pathname: pass1
 Presentation Format: gr-n-ccl
 Dataset Creation: Fri Jan 27 14:36:01 2012 by Log SCH 111116
 Charted by: Depth in Feet scaled 1:240



4-12-2012
 Perforated Interval
 727.0 - 734.0 22 Perfs
 2' DML RTG