



MIDWEST SURVEYS
 LOGGING - PERFORATING - CONSULTING SERVICES
 P.O. Box 68, Osawatomie, KS 66064
 913 / 755 - 2128

GAMMA RAY / NEUTRON / CCL

File No. _____
 Company **Altavista Energy, Inc.**
 Well **Bivins No. AI-23**
 Field **Paola - Rantoul**
 County **Franklin** State **Kansas**

Location **1445' FSL & 3830' FEL**
SW-SW-NE-SW
 Sec. 18 Twp. 16S Rge. 21E
 Permian Basin Log Measured From GL
 Drilling Measured From GL
 Other Services Perforate

Date **01-28-2012**
 Run Number **One**
 Depth Drier **799.0**
 Depth Logger **738.0**
 Bottom Logged Interval **738.0**
 Top Log Interval **20.0**
 Fluid Level **Full**

Type Fluid **Water**
 Density / Viscosity **NA**
 Salinity - PPM Cl **NA**
 Max. Recorded Temp **NA**
 Estimated Cement Top **0.0**
 Equipment No. **107** Location **Osawatomie**
 Recorder By **Steve Wandsch**
 Witnessed By **Doug Evans**

BORE-HOLE RECORD				CASING RECORD			
RUN	BIT	FROM	TO	SIZE	WGT.	FROM	TO
One	9.875"	0.0	22.0	7.00"	0.0	0.0	22.0
Two	5.65"	22.0	799.0	2.875"	0.0	0.0	779.0
				Baffle	Set	At	742.0

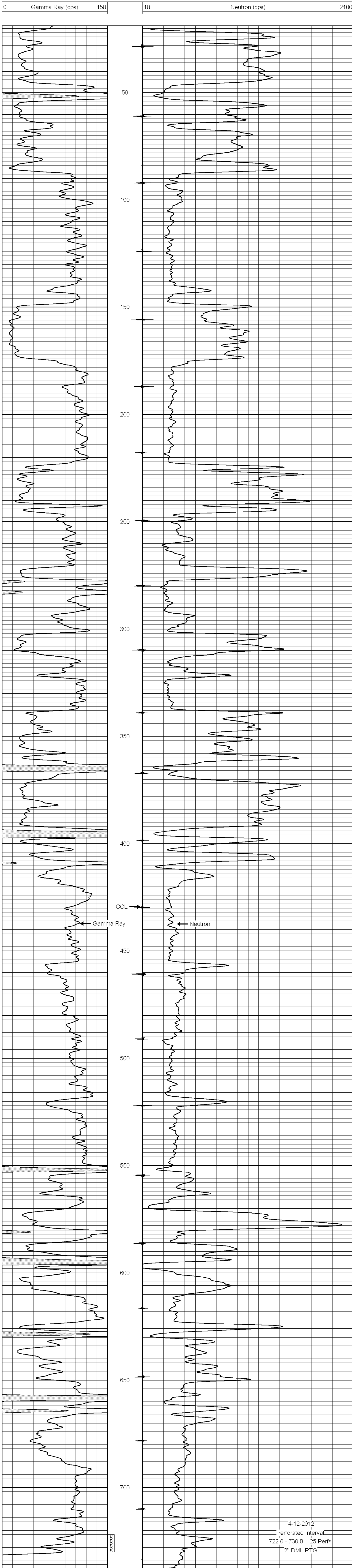
<<< Fold Here >>>

All interpretations are opinions based on inferences from electrical or other measurements and we cannot and do not guarantee the accuracy or correctness of any interpretation, and we shall not, except in the case of gross or willful negligence on our part, be liable or responsible for any loss, costs, damages, or expenses incurred or sustained by anyone resulting from any interpretation made by any of our officers, agents or employees. These interpretations are also subject to our general terms and conditions set out in our current Price Schedule.

Comments

Drilling Contractor :
Town Oilfield Services, Inc.

Database File: **bivins23ai.db**
 Dataset Pathname: **pass1**
 Presentation Format: **gr-n-ccl**
 Dataset Creation: **Sat Jan 28 11:28:33 2012 by Log SCH 111116**
 Charted by: **Depth in Feet scaled 1:240**



4-12-2012
 Perforated Interval
 722.0 - 730.0 25 Perfs
 2" DML RTG