



**MIDWEST SURVEYS**  
 LOGGING - PERFORATING - CONSULTING SERVICES  
 P.O. Box 66, Osawatomie, KS 66064  
 913 / 755 - 2128

**GAMMA RAY / NEUTRON / CCL**

File No.

Company **Altavista Energy, Inc.**

Well **Bivins No. A1-20**

Field **Paola - Rantoul**

County **Franklin** State **Kansas**

Location **1920' FSL & 4405' FEL**

Other Services **Perforate**

Sec. **18** Twp. **16S** Rge. **21E**

Perforation **GL** Elevation **NA**

Log Measured From **GL** K.B. **NA**

Drilling Measured From **GL** D.F. **NA**

Date **01-27-2012** Elevation **GL NA**

Run Number **One**

Depth Outlet **799.0**

Depth Logger **755.0**

Bottom Logged Interval **754.0**

Top Log Interval **20.0**

Fluid Level **Full**

Type Fluid **Water**

Density /Viscosity **NA**

Salinity - PPM/Cl **NA**

Max Recorded Temp **NA**

Estimated Cement Top **NA**

Equipment No. **107** Location **Osawatomie**

Recorded By **Steve Windisch**

Witnessed By **Doug Evans**

BOREHOLE RECORD				CASINGS RECORD			
RUN#	BIT No.	FROM	TO	SIZE	WGT.	FROM	TO
One	9.875"	0.0	22.0	7.00"	0.0	0.0	22.0
Two	5.625"	22.0	799.0	2.875"	0.0	788.35	788.35
				Baffle	Set	At	756.95

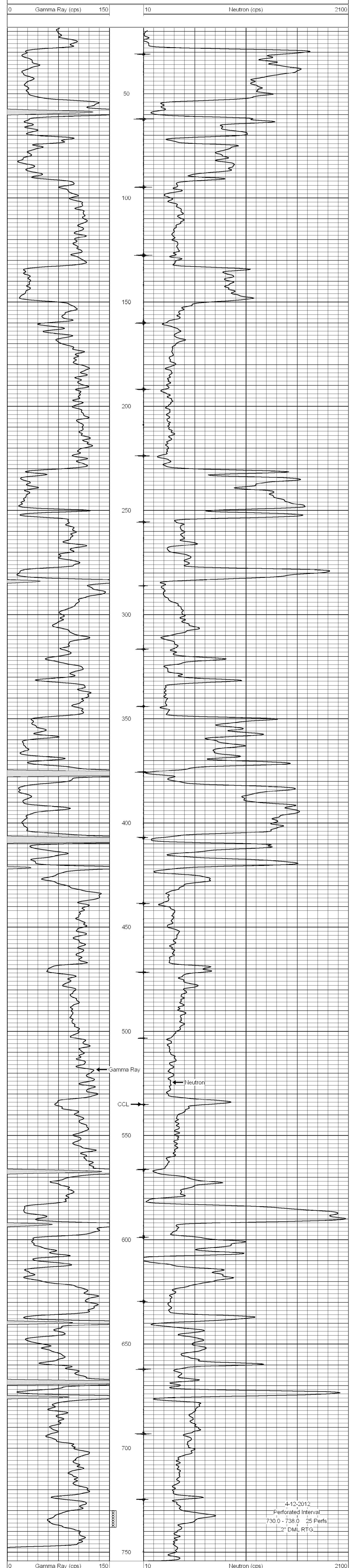
<<< Fold Here >>>

All interpretations are opinions based on inferences from electrical or other measurements and we cannot and do not guarantee the accuracy or correctness of any interpretation, and we shall not, except in the case of gross or willful negligence on our part, be liable or responsible for any loss, costs, damages, or expenses incurred or sustained by anyone resulting from any interpretation made by any of our officers, agents or employees. These interpretations are also subject to our general terms and conditions set out in our current Price Schedule.

Comments

Drilling Contractor :  
 Town Oilfield Services, Inc.

Database File: bivins20ai.db  
 Dataset Pathname: pass1  
 Presentation Format: gr-n-ccl  
 Dataset Creation: Fri Jan 27 15:09:45 2012 by Log SCH 111116  
 Charted by: Depth in Feet scaled 1:240



4-12-2012  
 Perforated Interval  
 730.0 - 738.0 25 Perfs  
 2" DML RTG