



**SUPERIOR**  
**Hays,**  
**Kansas**

**RADIATION**  
**GUARD**  
**LOG**

Company PALOMINO PETROLEUM, INC.  
 Well GHF #1  
 Field WILDCAT  
 County NESS  
 State KANSAS

Company PALOMINO PETROLEUM, INC.  
 Well GHF #1  
 Field WILDCAT  
 County NESS State KANSAS

Location: 2397' FNL & 293' FWL  
 API # : 15-135-25384-0000  
 Other Services  
 SEC 24 TWP 19S RGE 25W  
 Permanent Datum GROUND LEVEL Elevation 2355  
 Log Measured From KELLY BUSHING 10' A.G.L.  
 Drilling Measured From KELLY BUSHING  
 Elevation  
 K.B. 2365  
 D.F. 2363  
 G.L. 2355

Date	5/1/12		
Run Number	ONE		
Depth Driller	4525		
Depth Logger	4527		
Bottom Logged Interval	4525		
Top Log Interval	00		
Casing Driller	8 5/8" @ 225		
Casing Logger	225		
Bit Size	7 7/8		
Type Fluid in Hole	CHEMICAL MUD	CHLORIDES 7800 PPM	
Density / Viscosity	9.2/48		
pH / Fluid Loss	10.0/10.4		
Source of Sample	FLOWLINE		
Rim @ Meas. Temp	.50 @ 83F		
Rmf @ Meas. Temp	.37 @ 83F		
Rmc @ Meas. Temp	.60 @ 83F		
Source of Rmf / Rmc	MEASURED		
Rim @ BHT	.34 @ 121F		
Time Circulation Stopped	2 HOURS		
Time Logger on Bottom			
Maximum Recorded Temperature	121F		
Equipment Number	680		
Location	HAYS, KS.		
Recorded By	JASON CAPPELLUCCI		
Witnessed By	NICK GERSTNER		

<<< Fold Here >>>

All interpretations are opinions based on inferences from electrical or other measurements and we cannot and do not guarantee the accuracy or correctness of any interpretation, and we shall not, except in the case of gross or willful negligence on our part, be liable or responsible for any loss, costs, damages, or expenses incurred or sustained by anyone resulting from any interpretation made by any of our officers, agents or employees. These interpretations are also subject to our general terms and conditions set out in our current Price Schedule.

Comments

THANK YOU FOR USING SUPERIOR WELL SERVICE (785) 628-6395  
 DIRECTIONS  
 NESS CITY - WEST TO LAIRD STATION (RD J) - 5 S. - E. & N. INTO

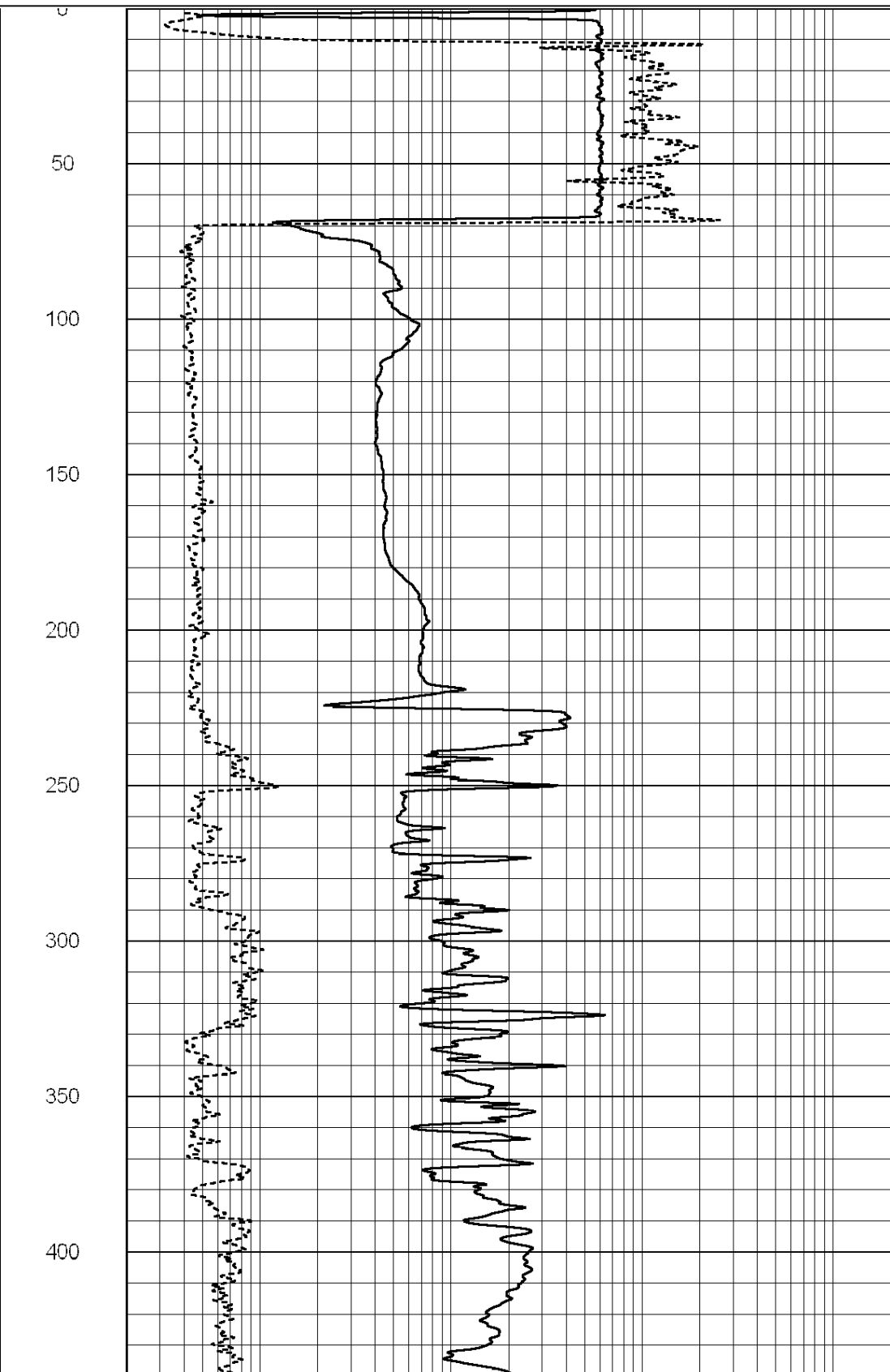
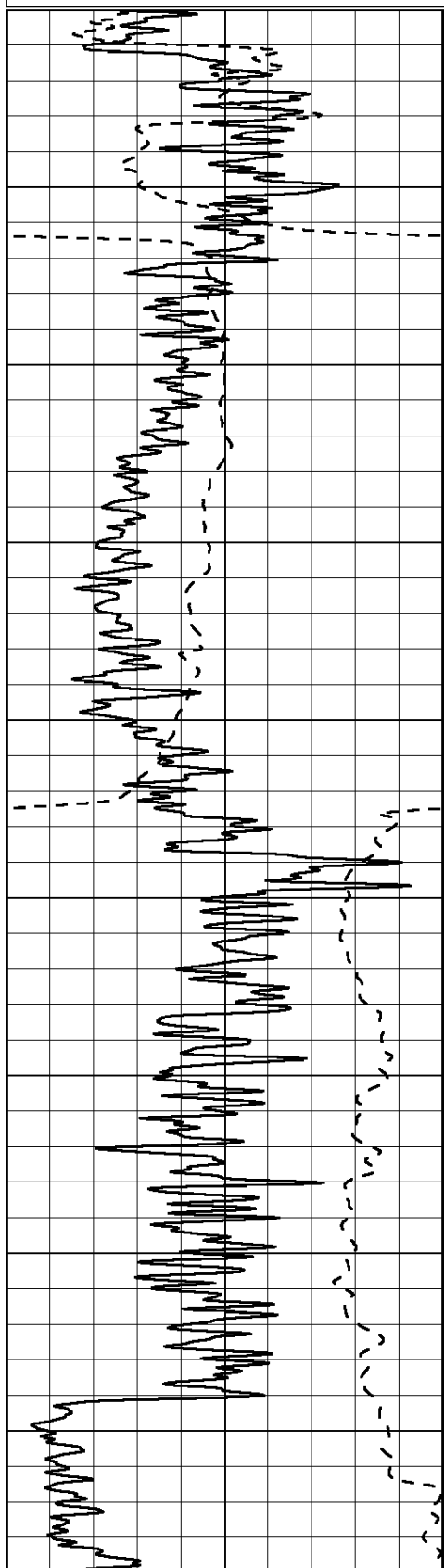


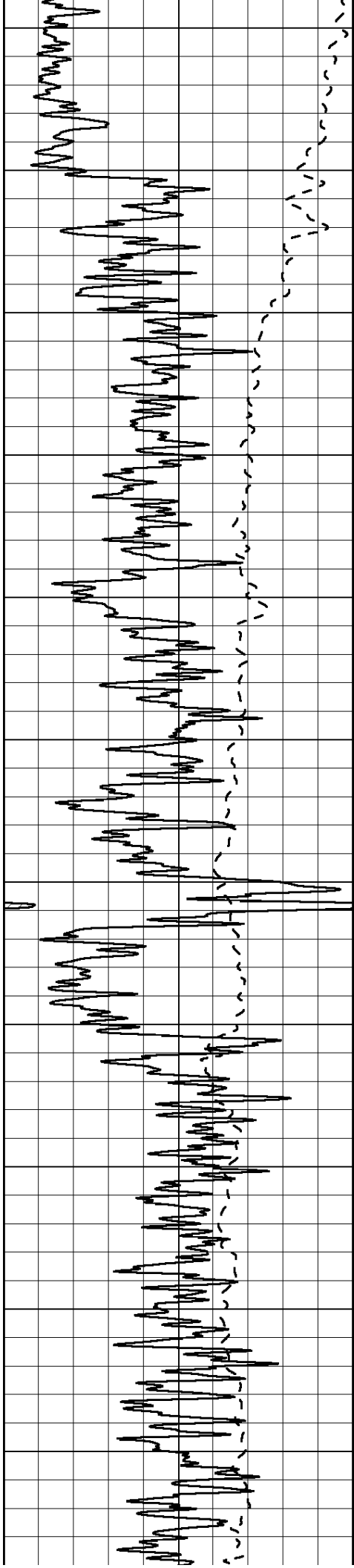
**SUPERIOR**  
**Hays,**  
**Kansas**

**MAIN SECTION**

Database File: 009056rag.db  
 Dataset Pathname: pass3.2  
 Presentation Format: rag2  
 Dataset Creation: Tue May 01 10:47:09 2012 by Calc Open-Cased 090629  
 Charted by: Depth in Feet scaled 1:600

0	GAMMA RAY (GAPI)	150	ABHV (ft3)	0.2	GUARD (Ohm-m)	2000
-100	SP (mV)	100		0	NEUTRON (NAPI)	1000
-----			TBHV (ft3)	-----		





450

500

550

600

650

700

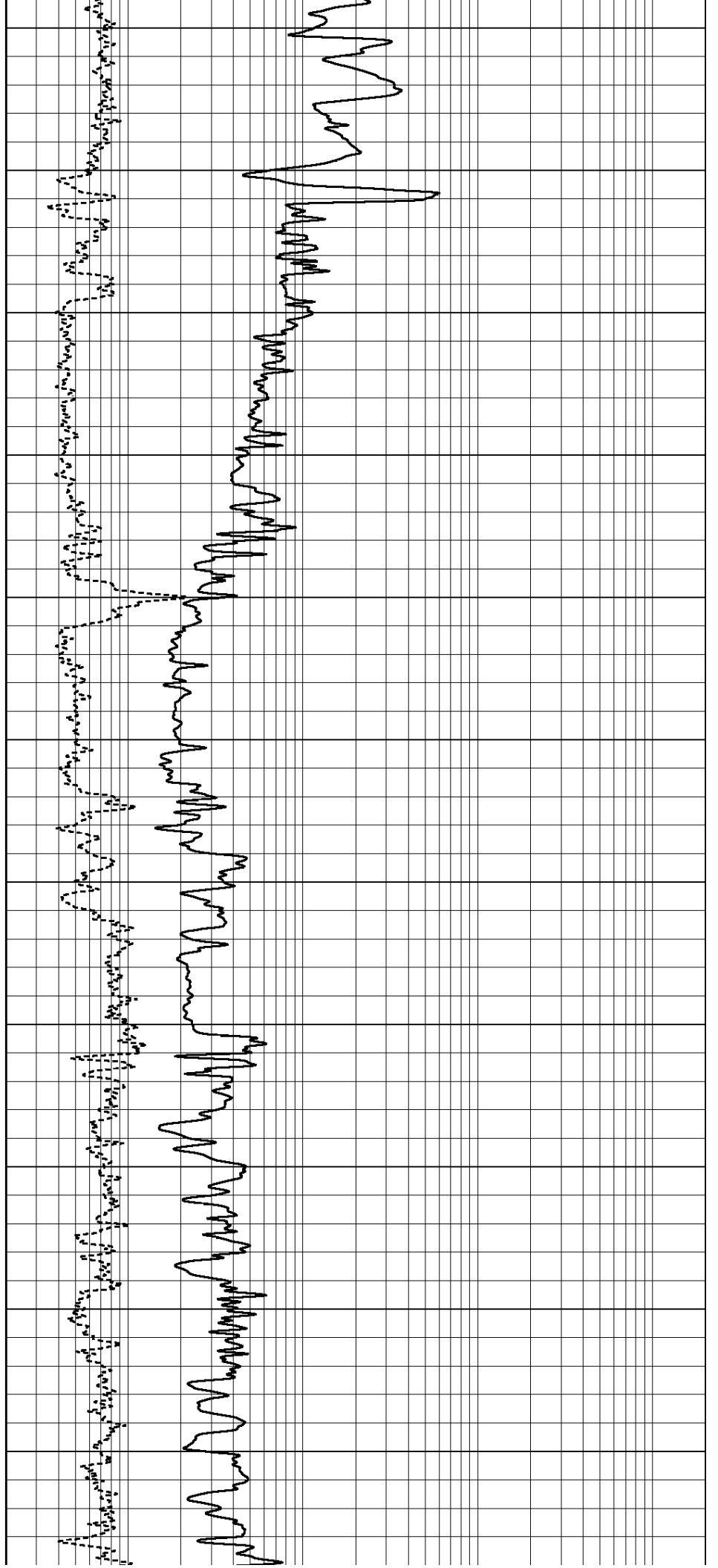
750

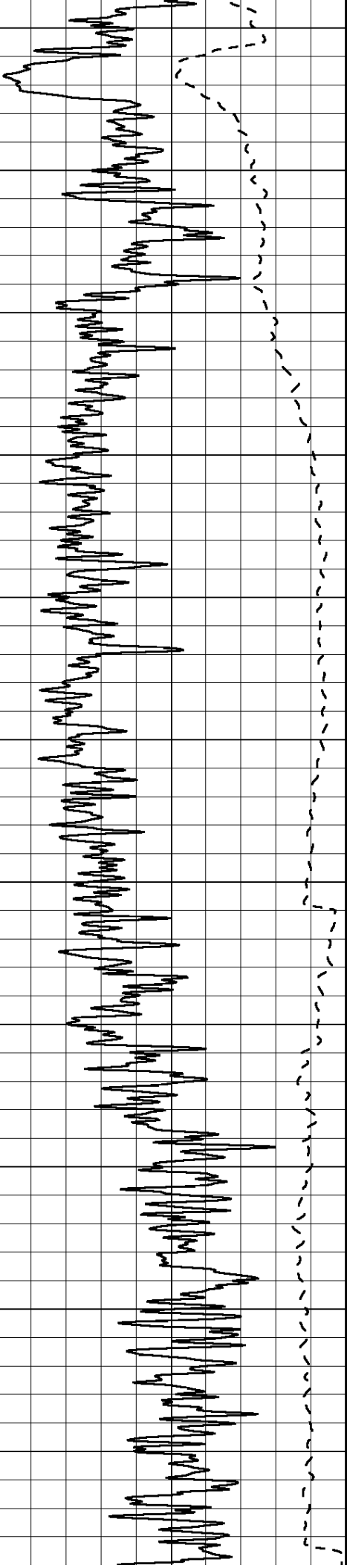
800

850

900

950





1000

1050

1100

1150

1200

1250

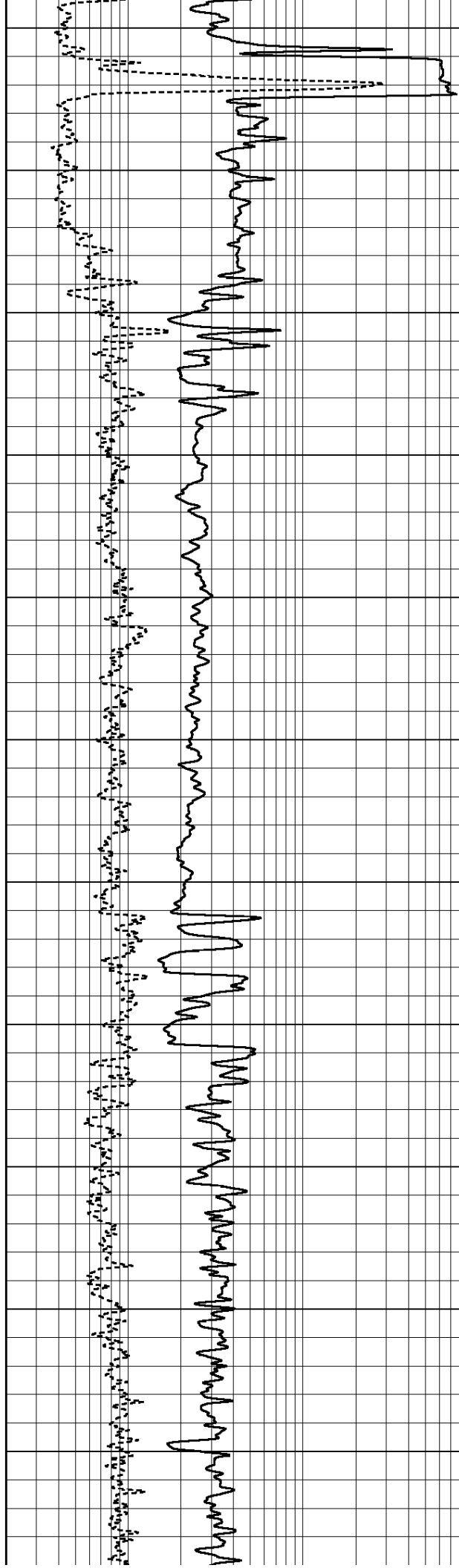
1300

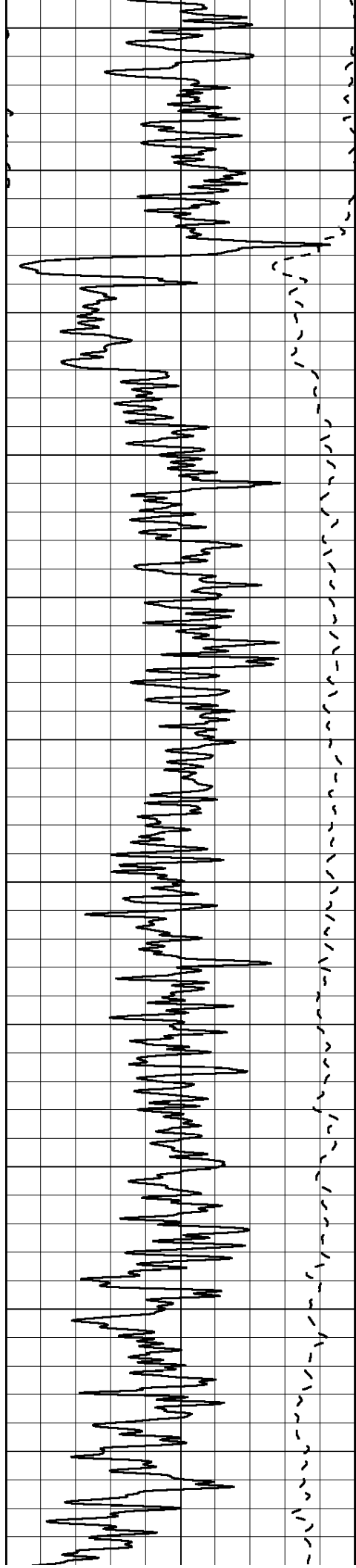
1350

1400

1450

1500





1550

1600

1650

1700

1750

1800

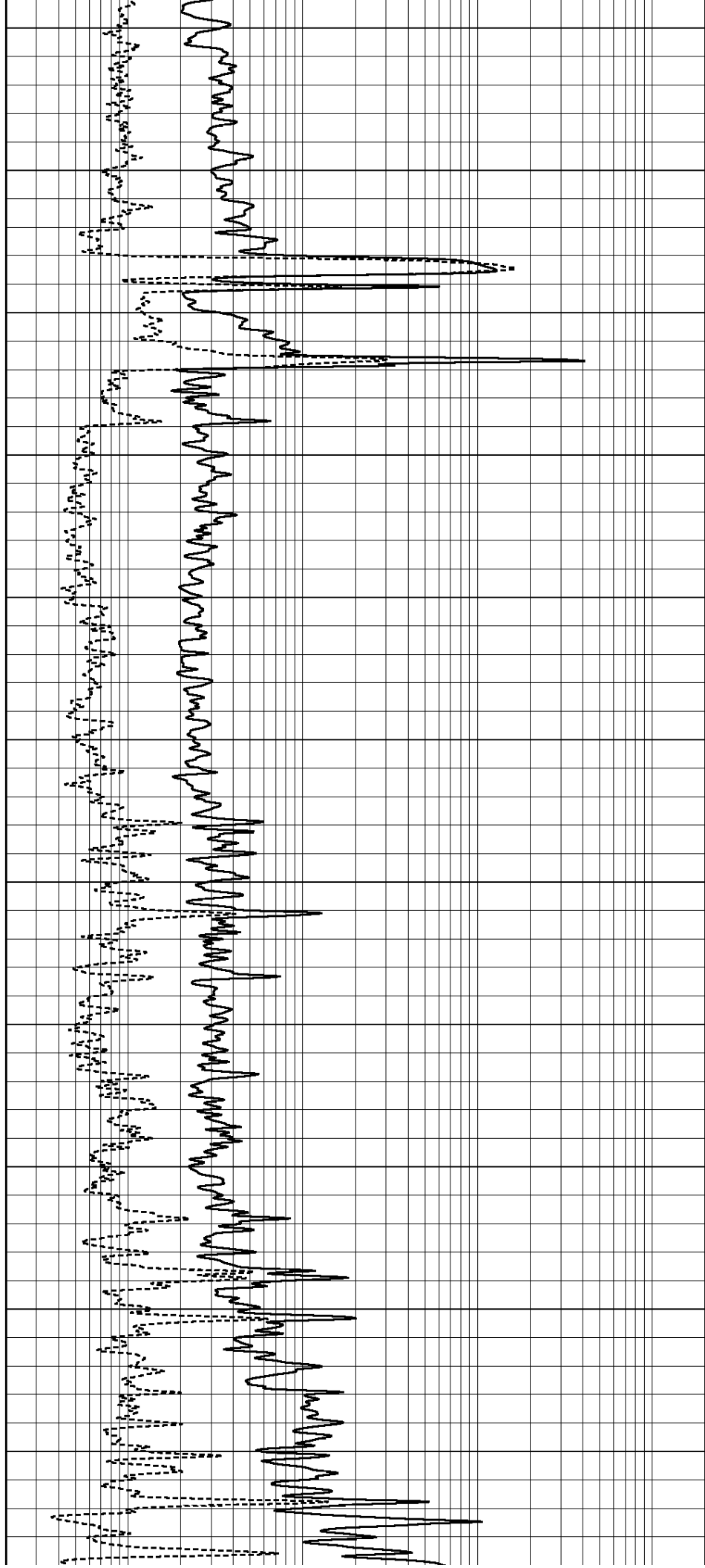
1850

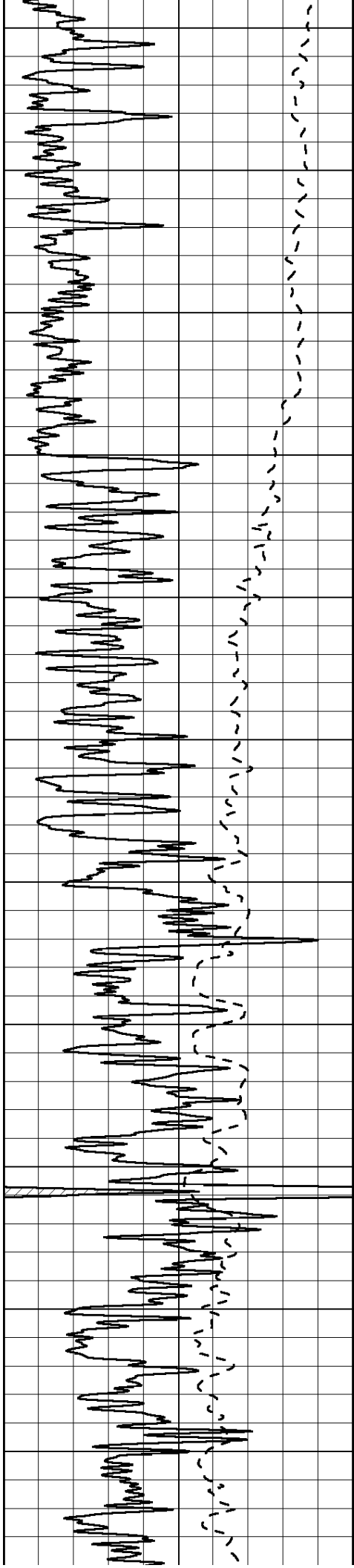
1900

1950

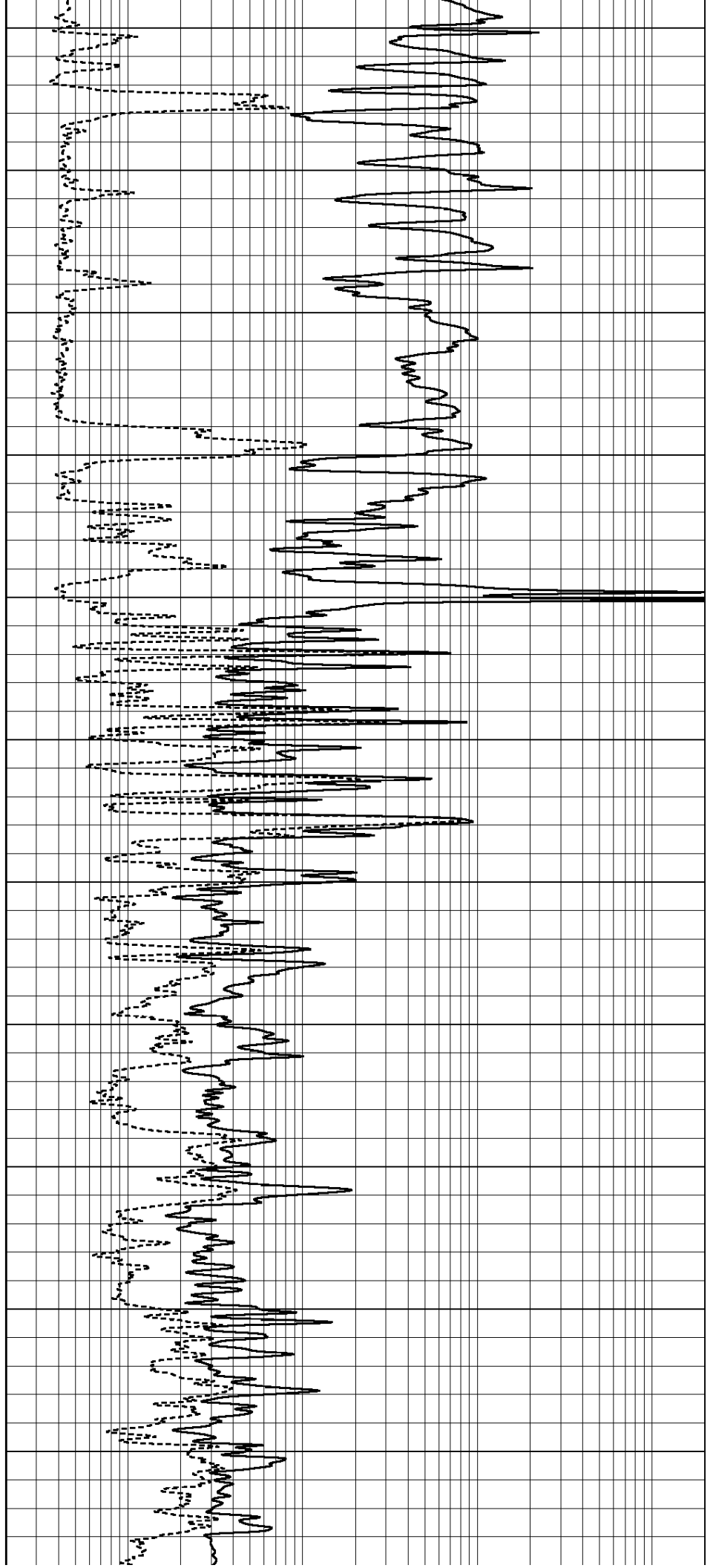
2000

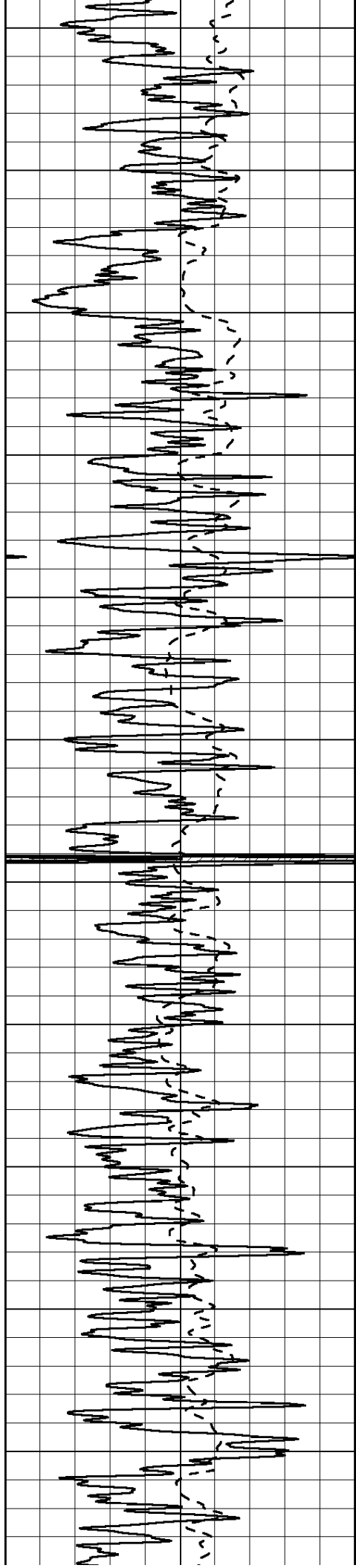
2050





2100  
2150  
2200  
2250  
2300  
2350  
2400  
2450  
2500  
2550  
2600





2650

2700

2750

2800

2850

2900

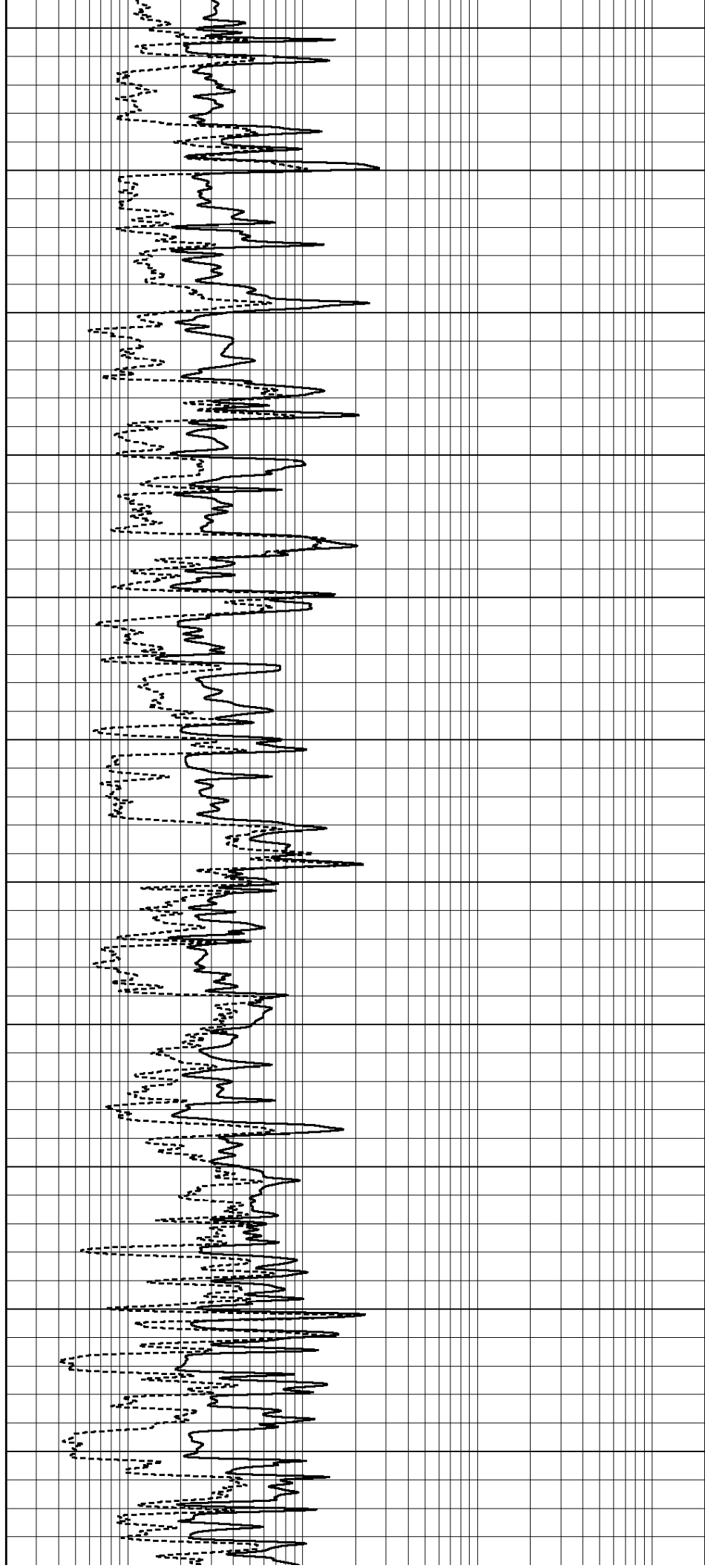
2950

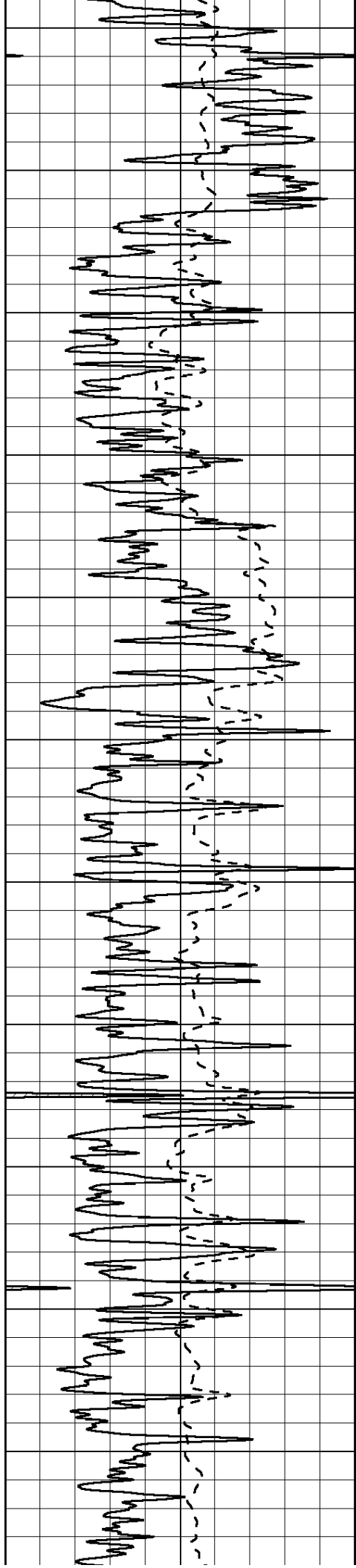
3000

3050

3100

3150





3200

3250

3300

3350

3400

3450

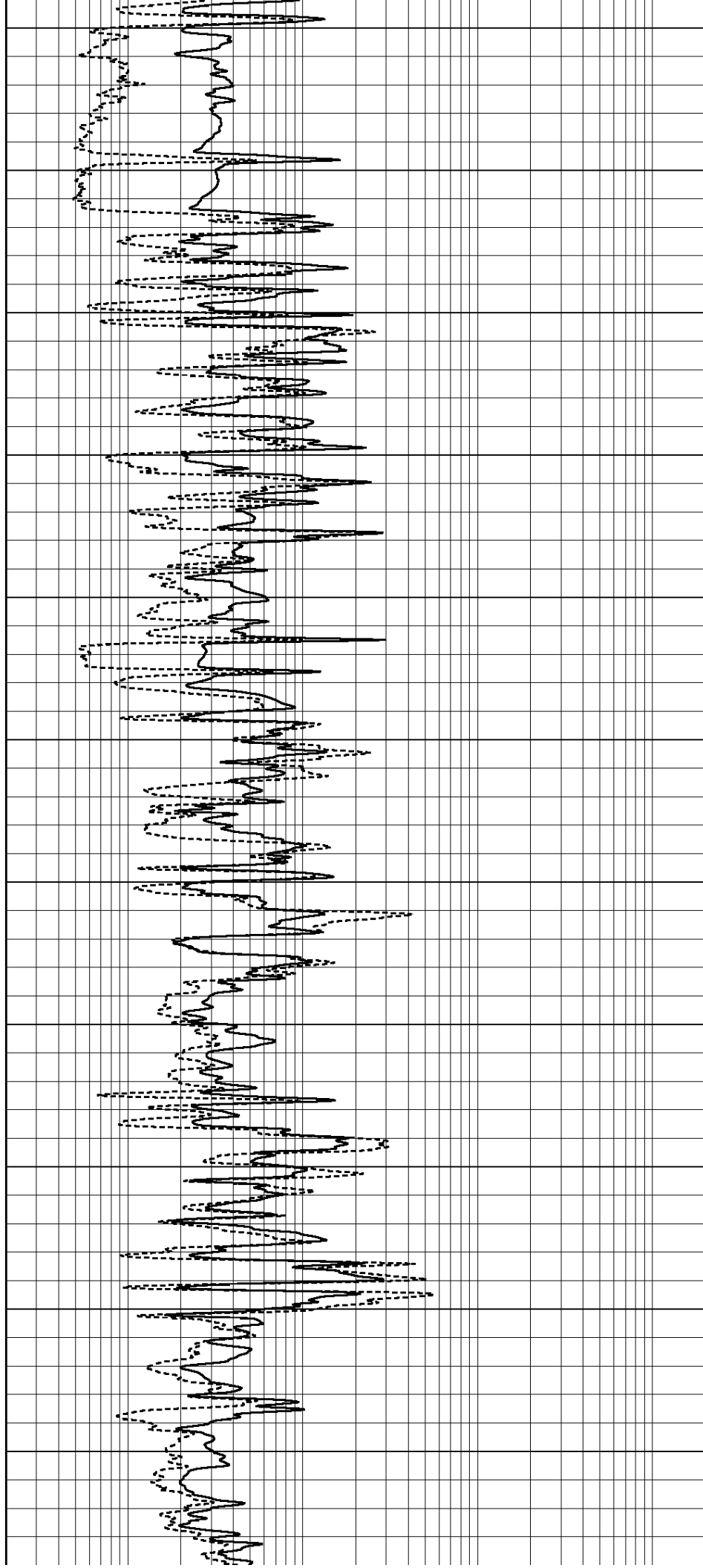
3500

3550

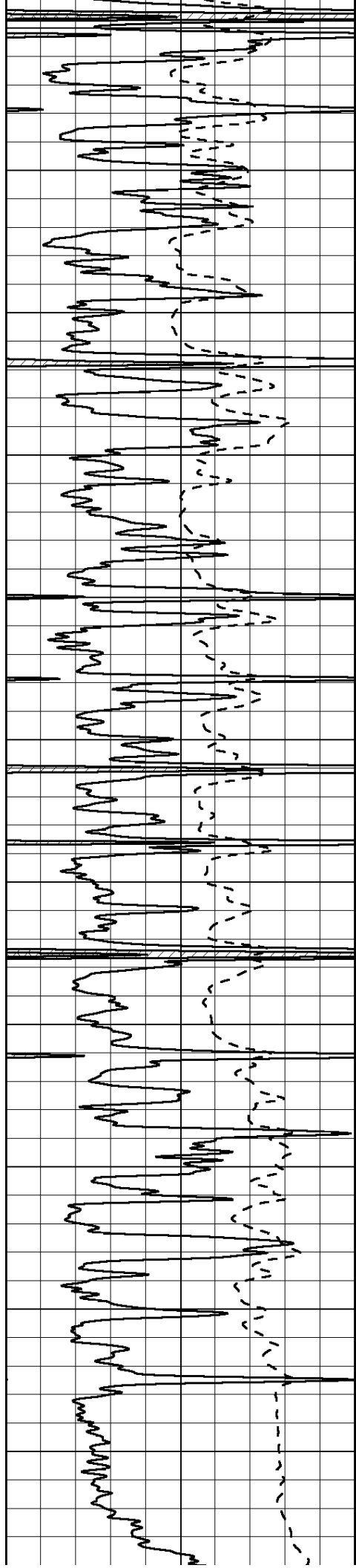
3600

3650

3700







3750

3800

3850

3900

3950

4000

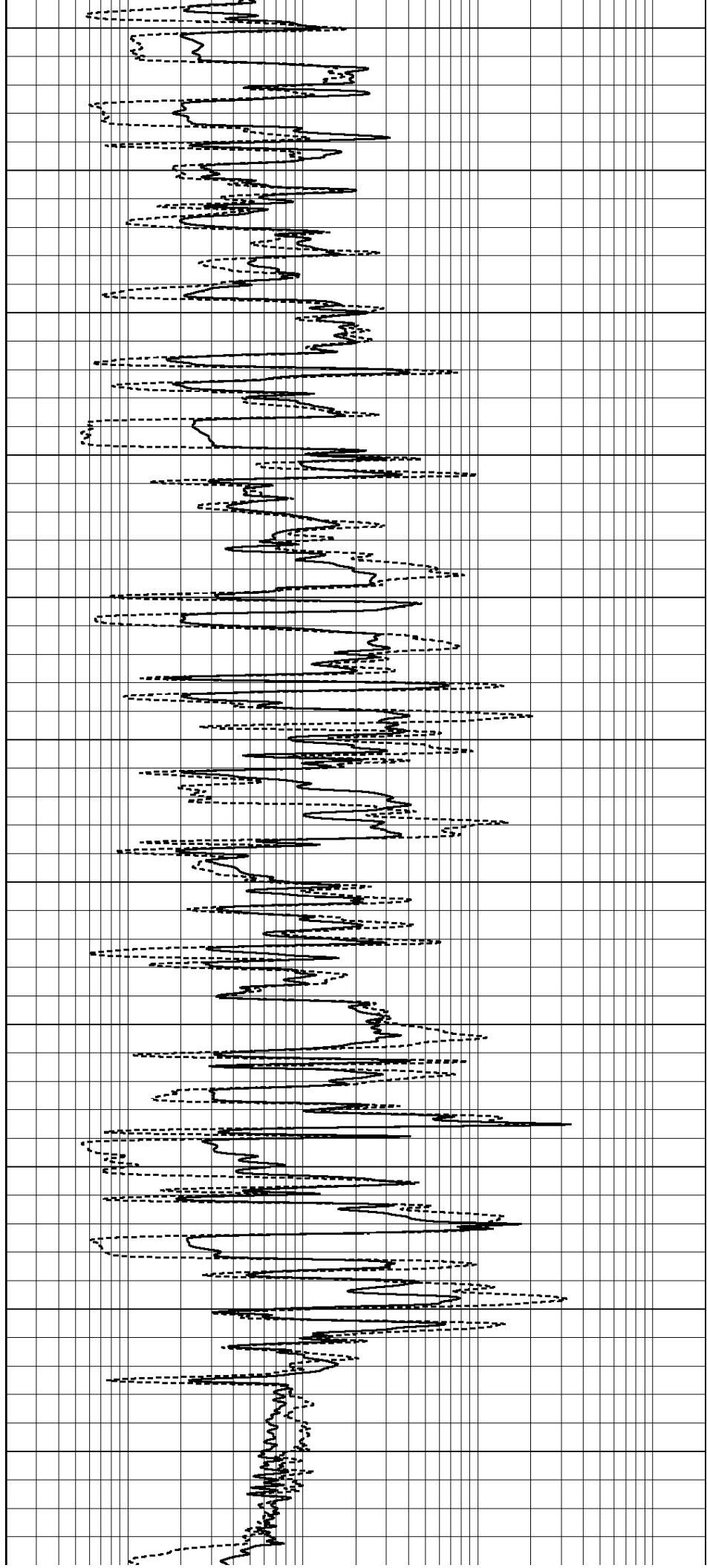
4050

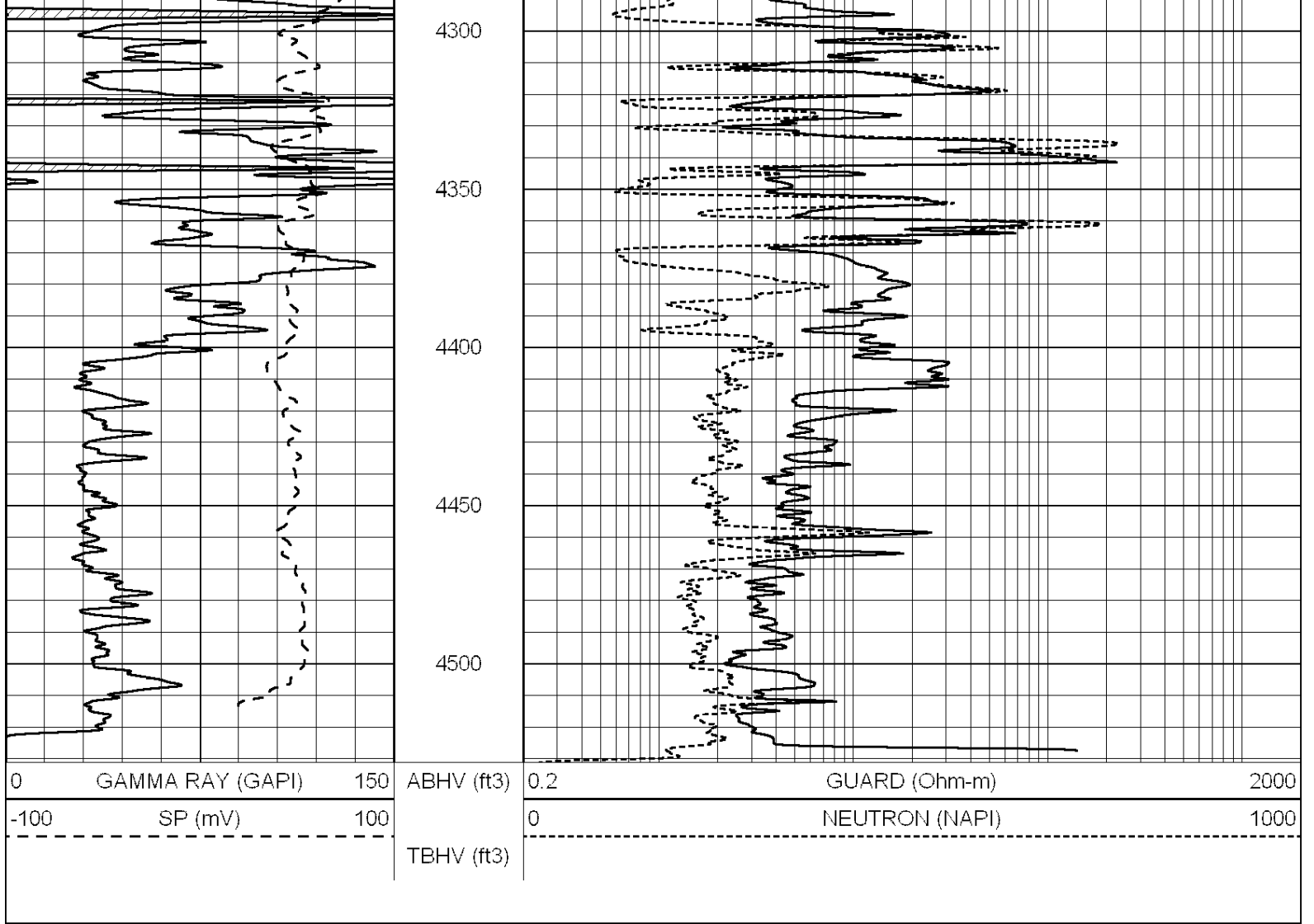
4100

4150

4200

4250

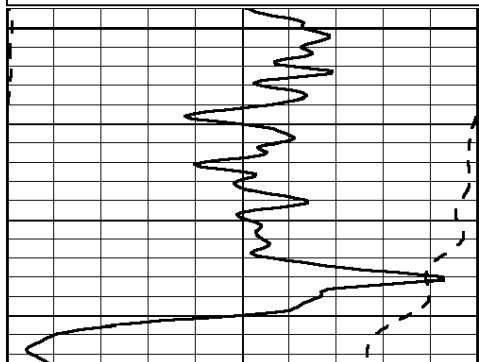
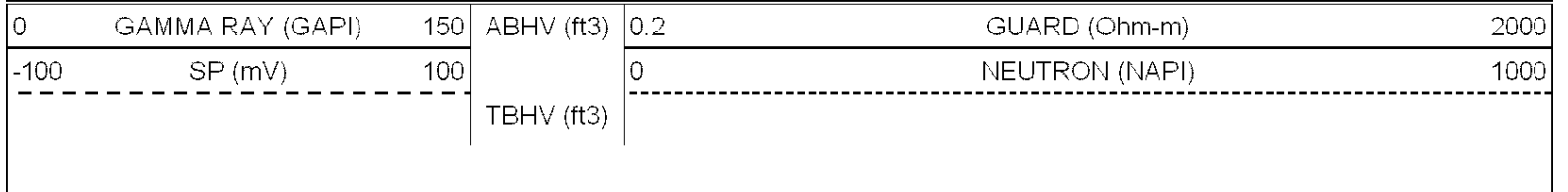




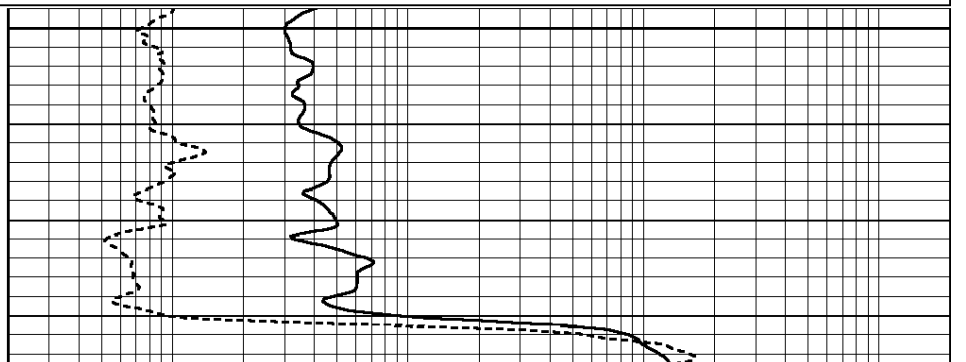
SUPERIOR  
Hays,  
Kansas

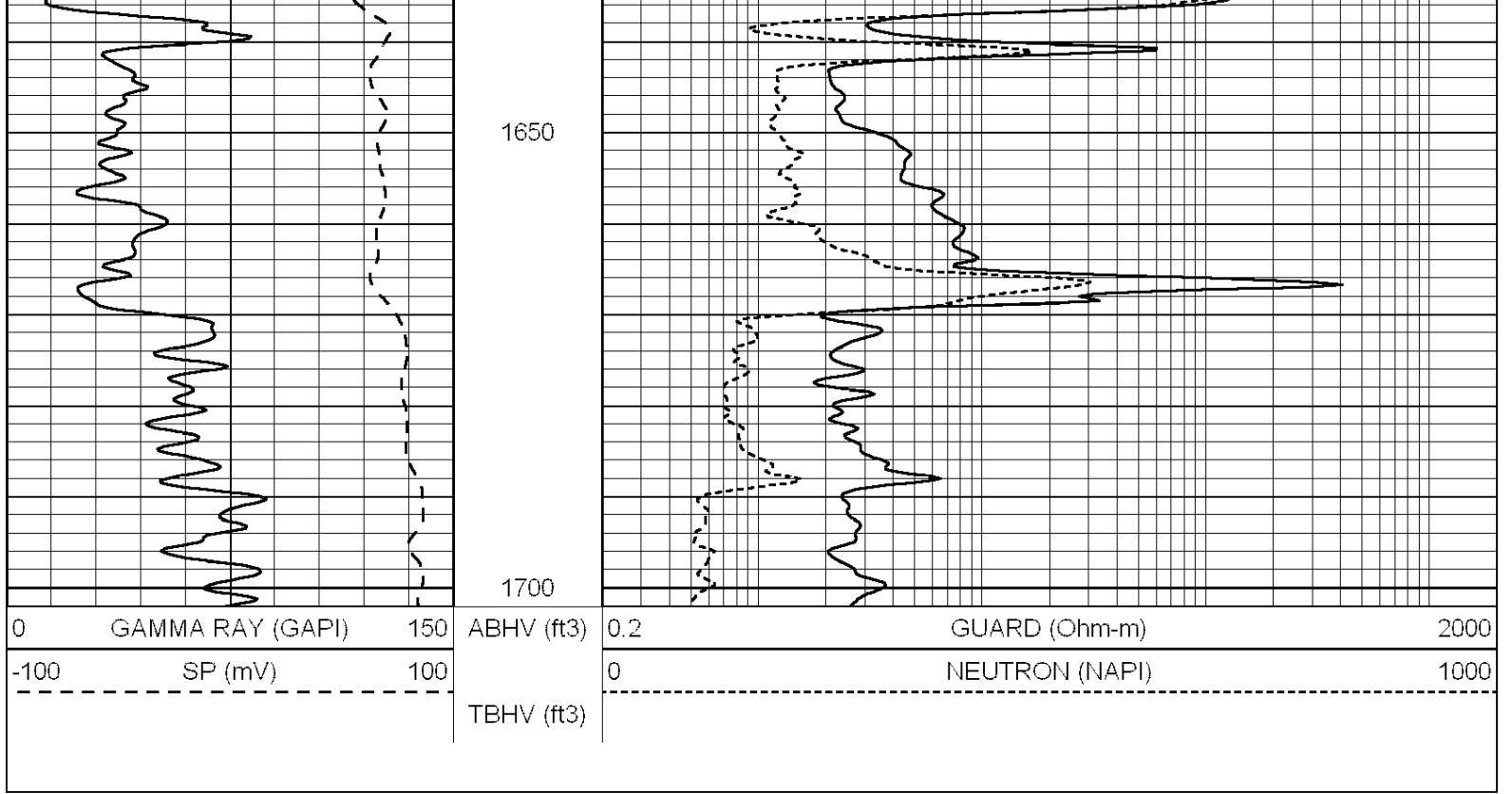
# ANHYDRITE

Database File: 009056rag.db  
 Dataset Pathname: pass3.3  
 Presentation Format: rag2  
 Dataset Creation: Tue May 01 10:20:58 2012 by Calc Open-Cased 090629  
 Charted by: Depth in Feet scaled 1:240



1600

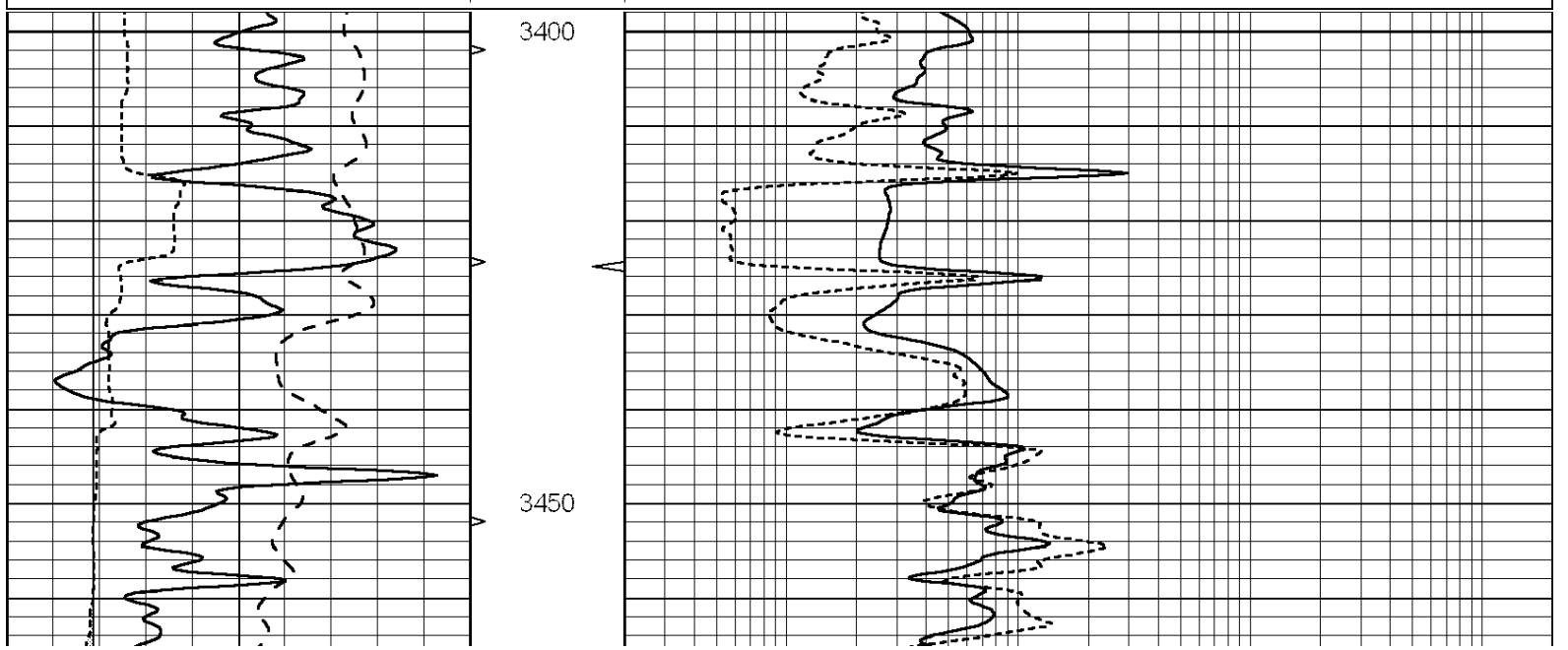
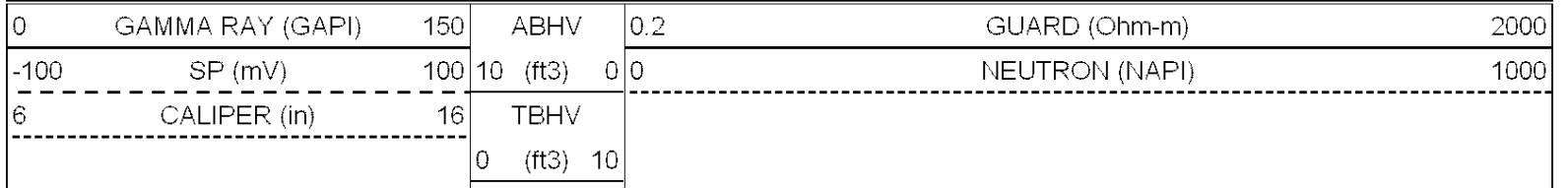


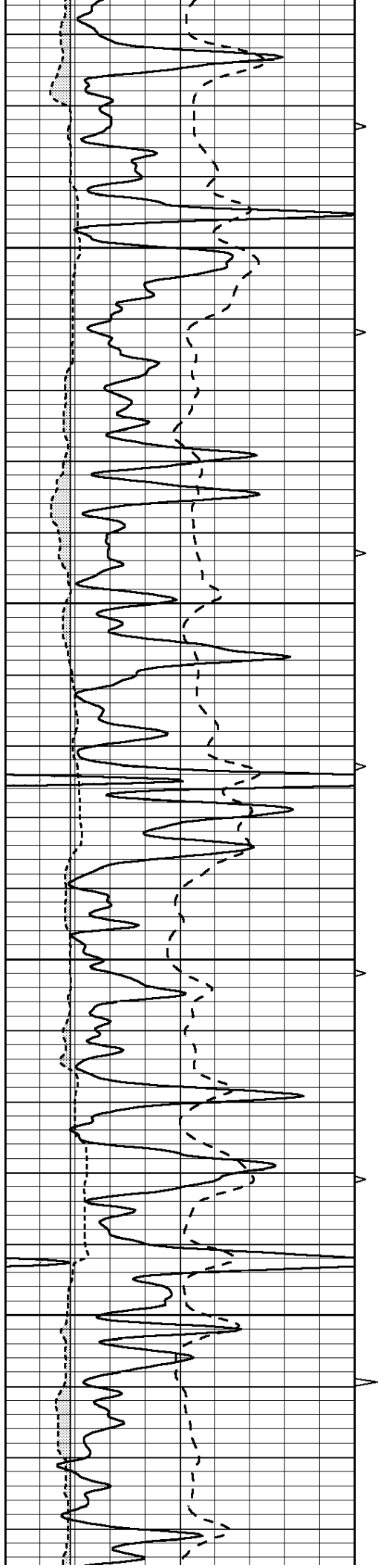


SUPERIOR  
Hays,  
Kansas

# MAIN SECTION

Database File: 009056rag.db  
 Dataset Pathname: pass3.1  
 Presentation Format: rag  
 Dataset Creation: Tue May 01 09:59:37 2012 by Calc Open-Cased 090629  
 Charted by: Depth in Feet scaled 1:240



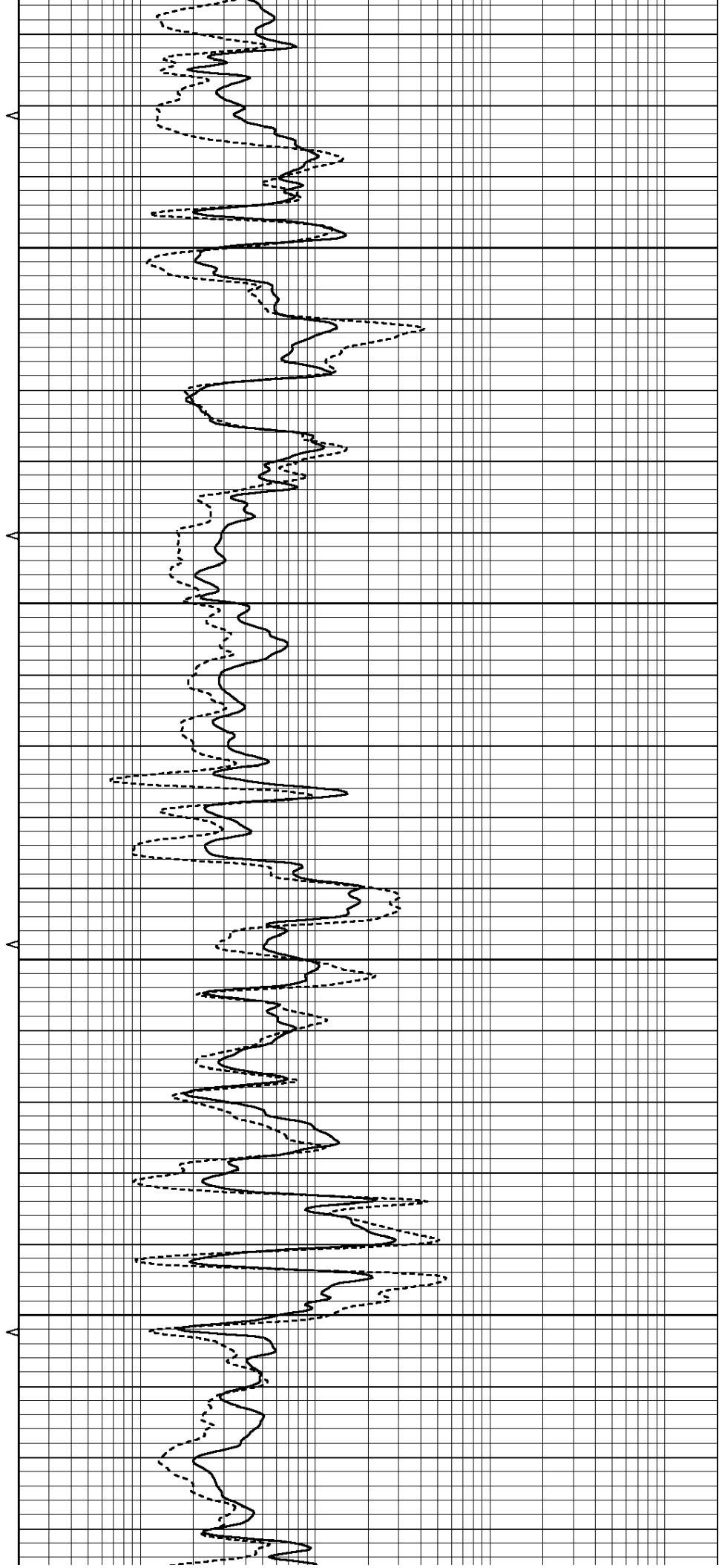


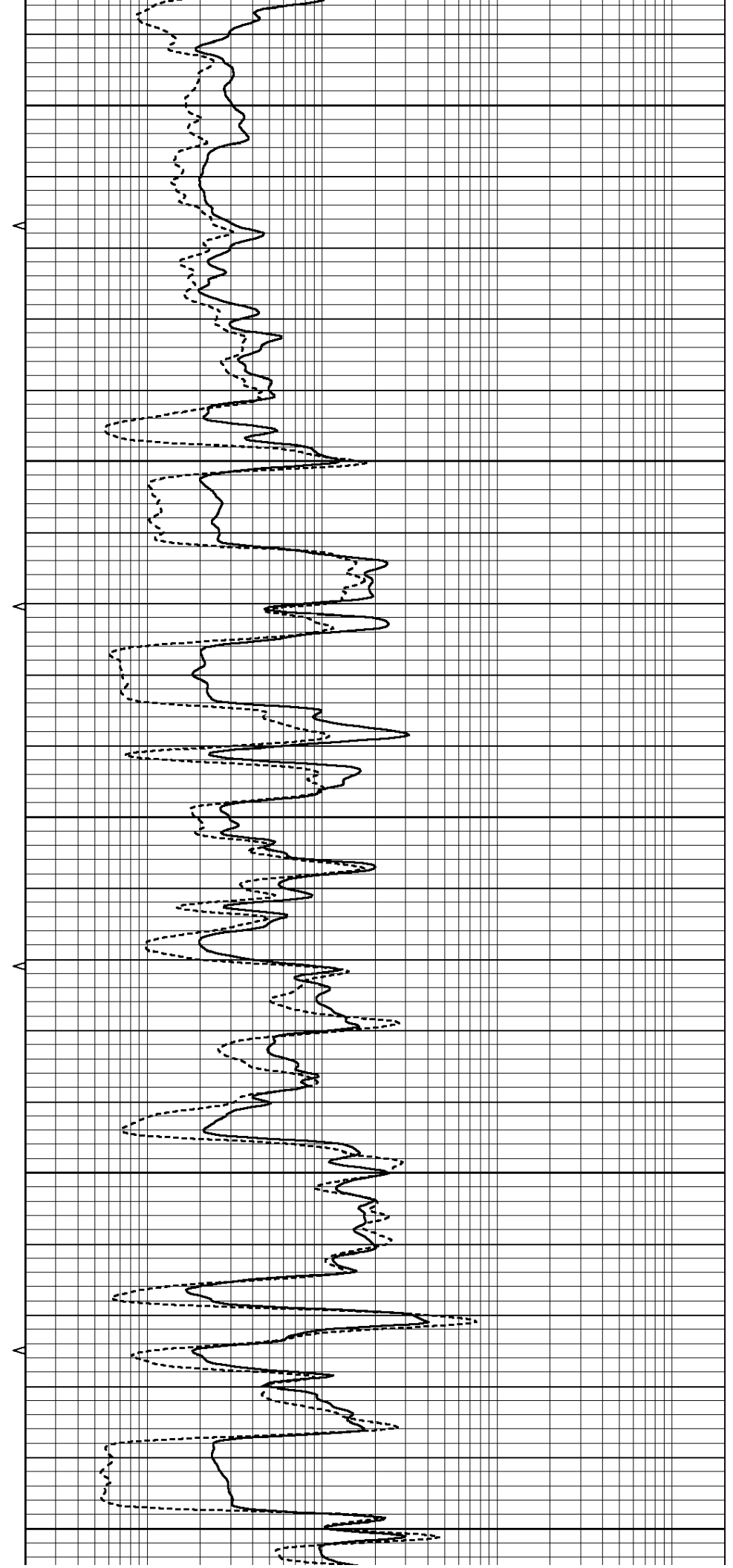
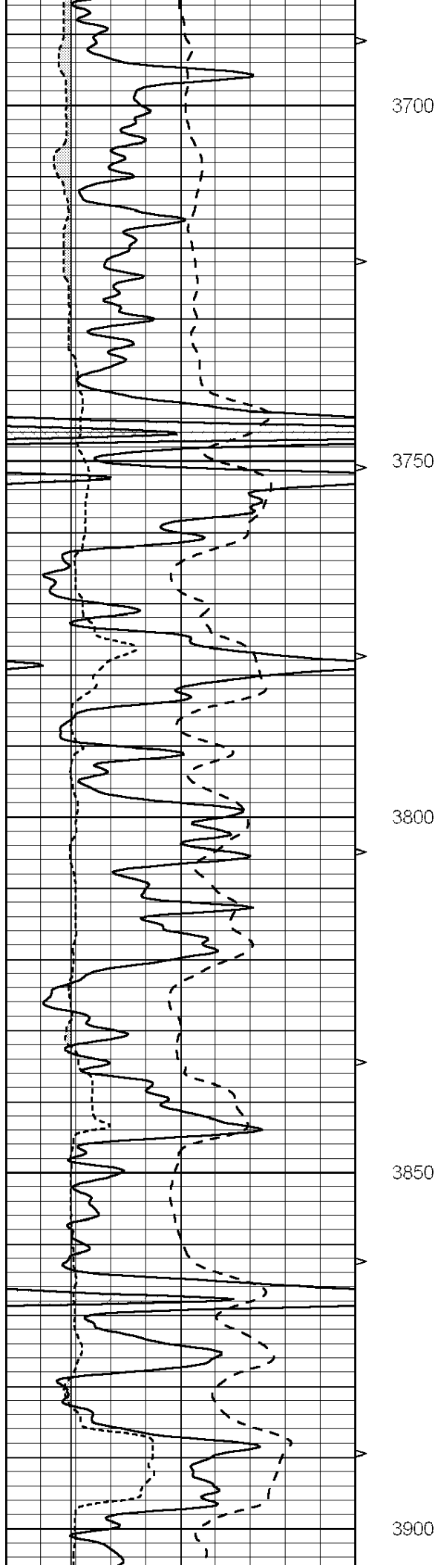
3500

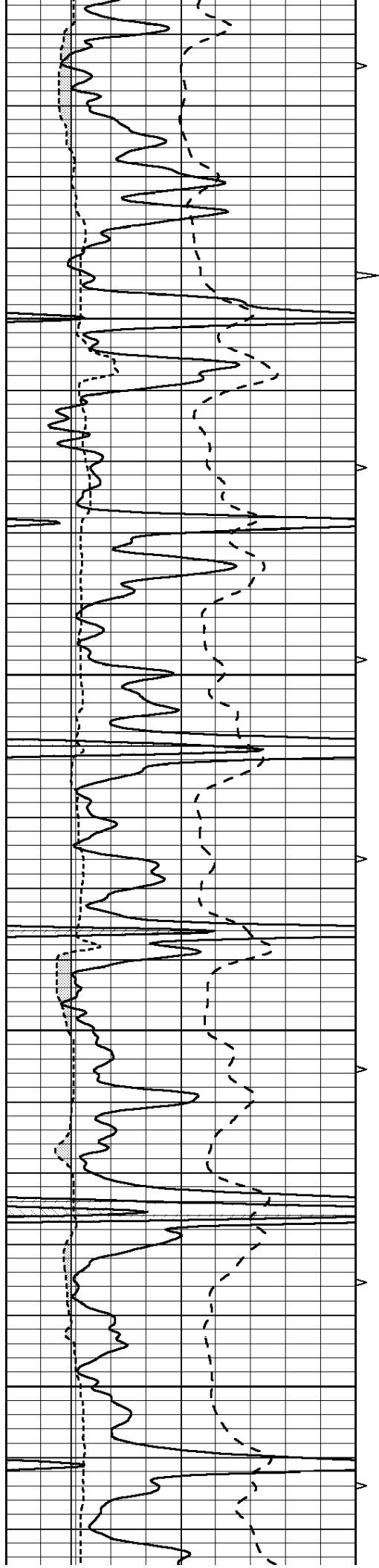
3550

3600

3650





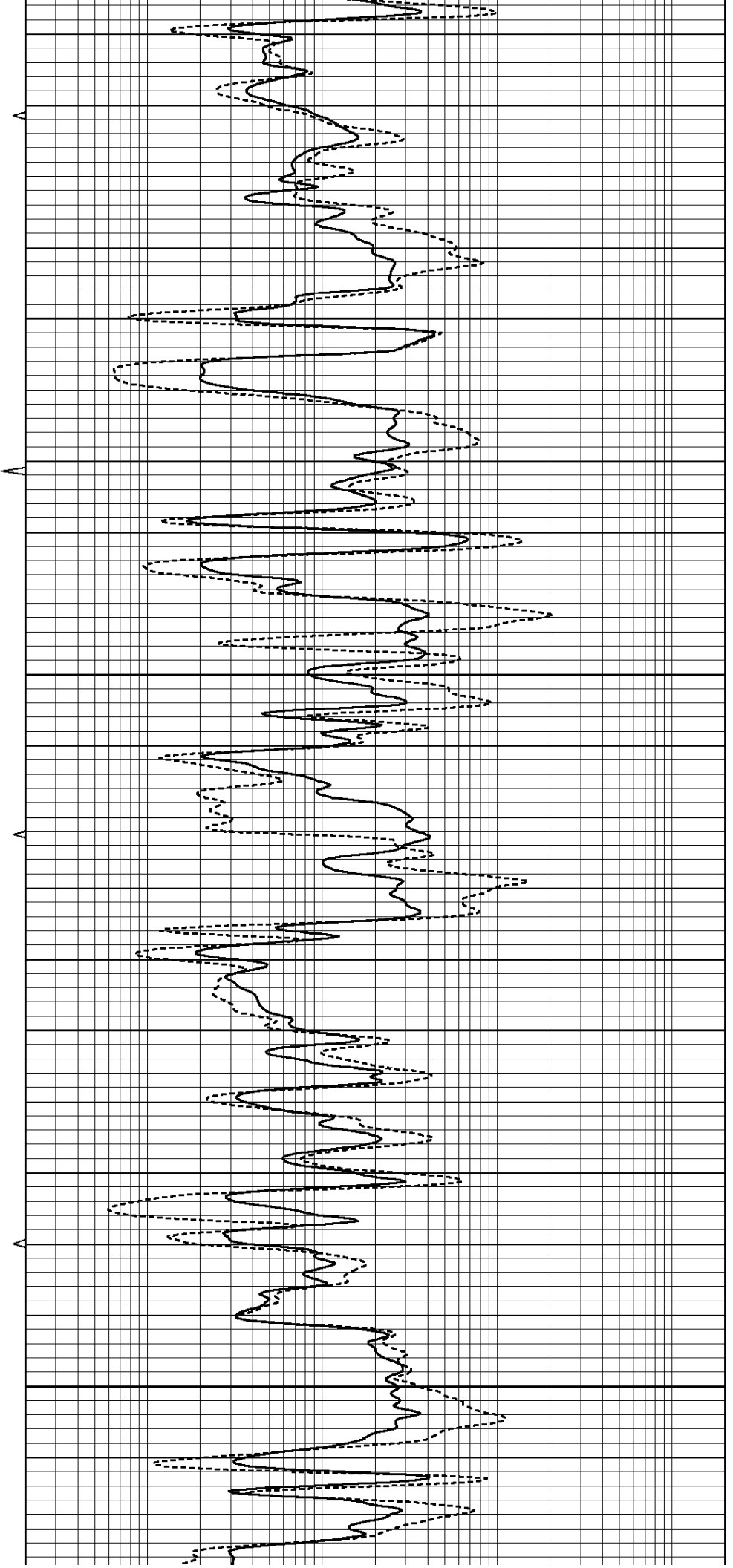


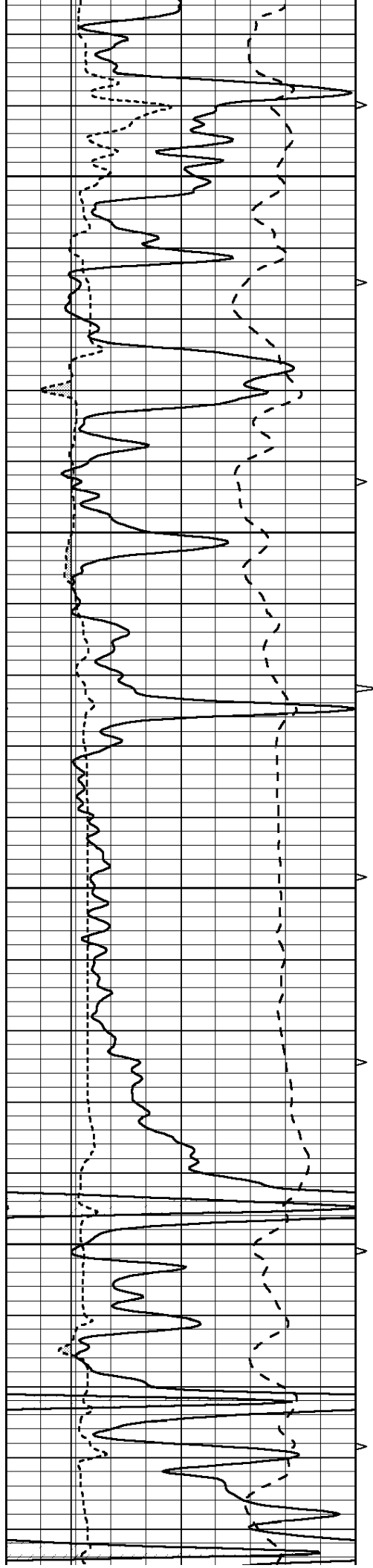
3950

4000

4050

4100



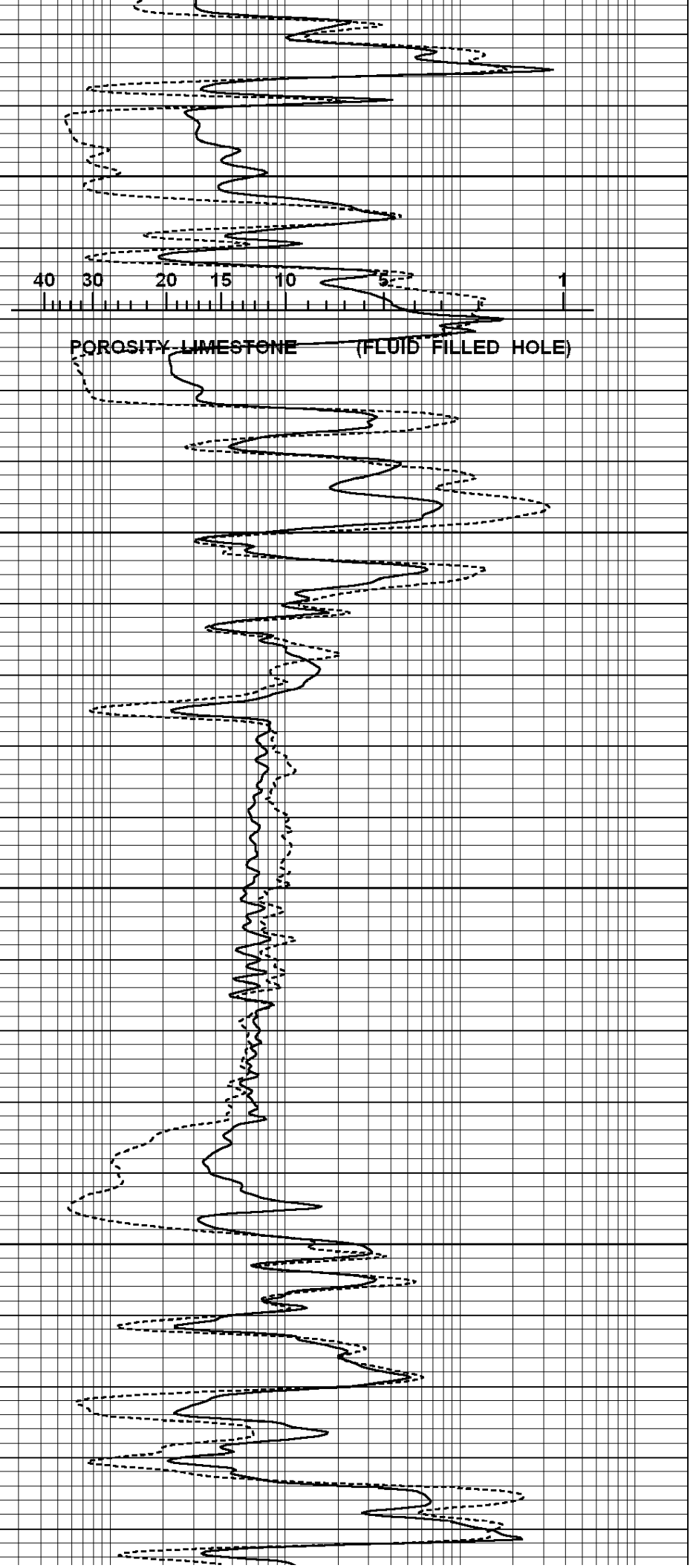


4150

4200

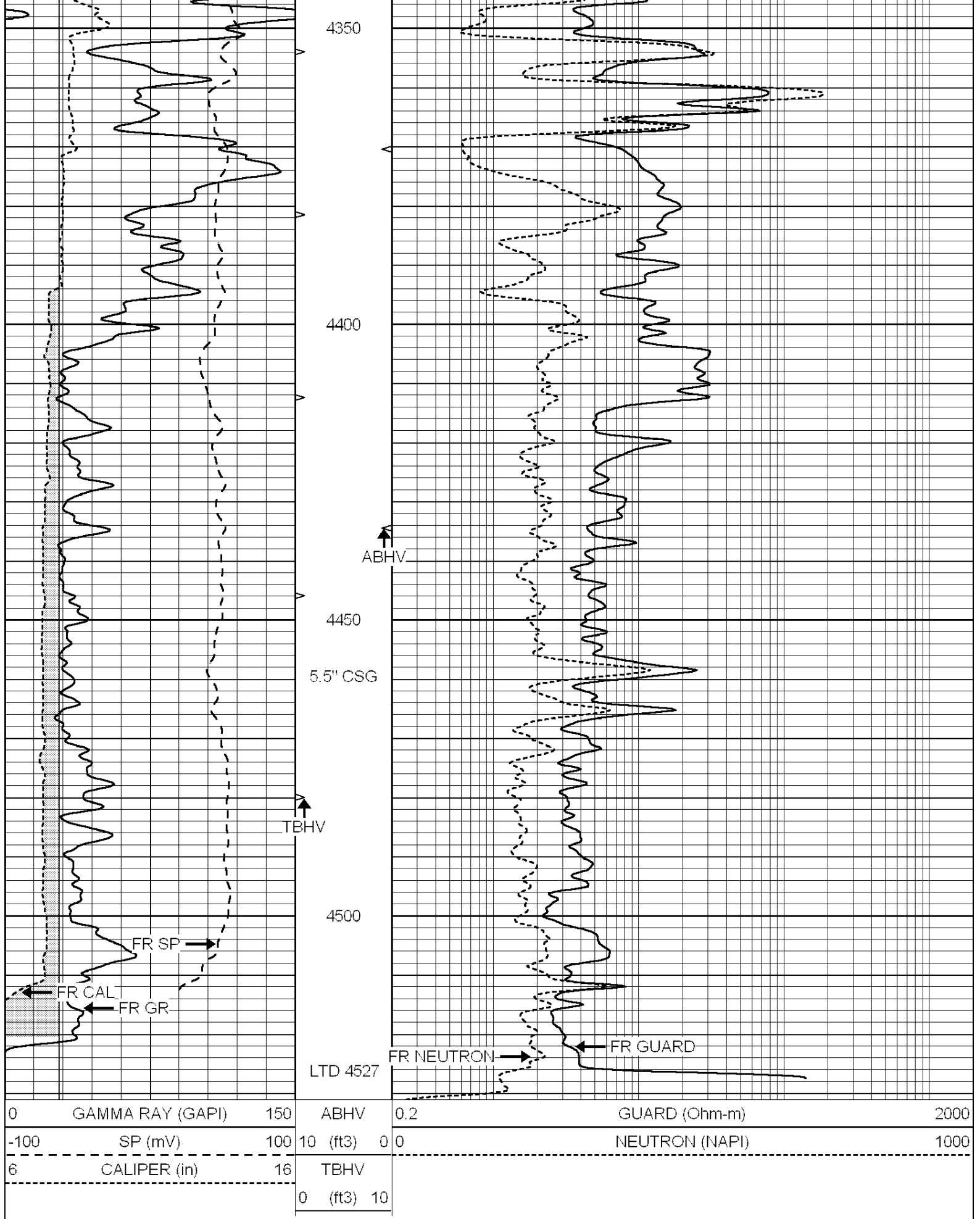
4250

4300



40 30 20 15 10 5 1

POROSITY LIMESTONE (FLUID FILLED HOLE)



SUPERIOR

REPEAT SECTION

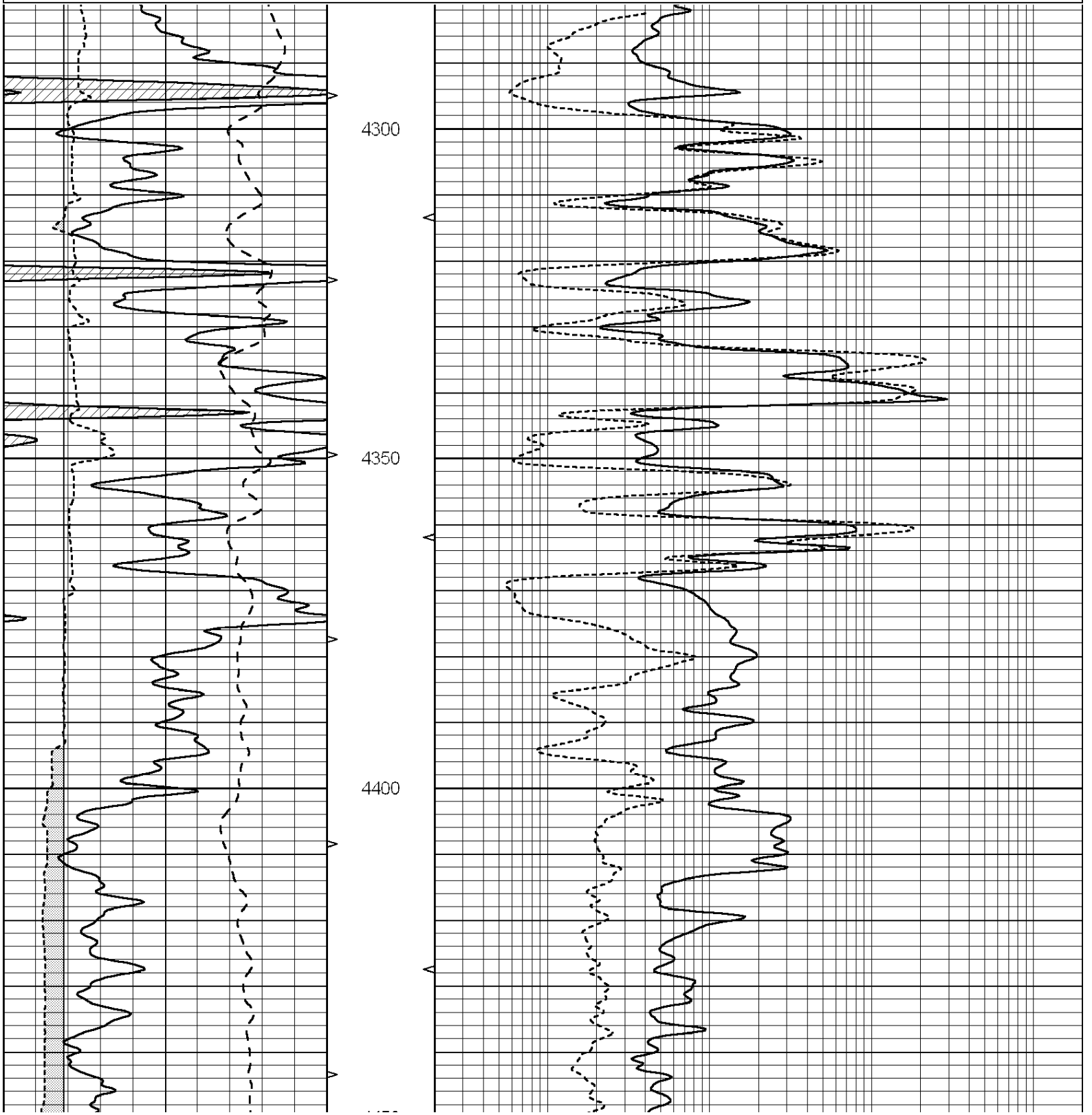


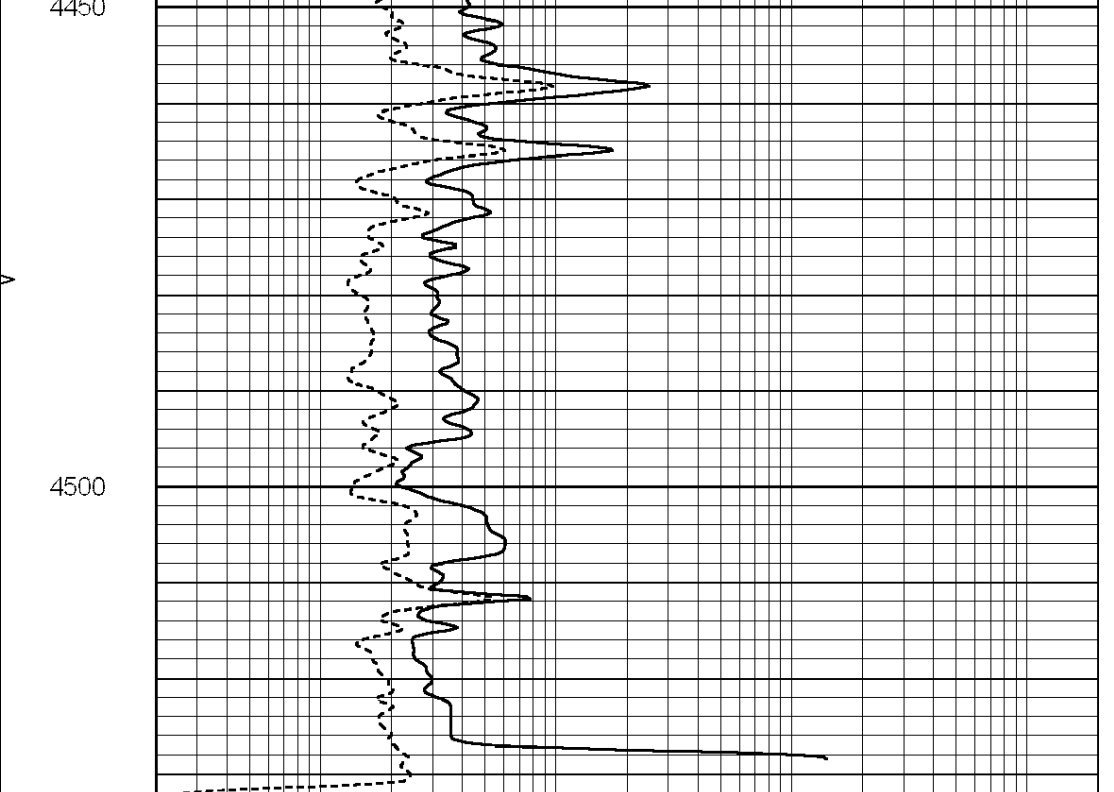
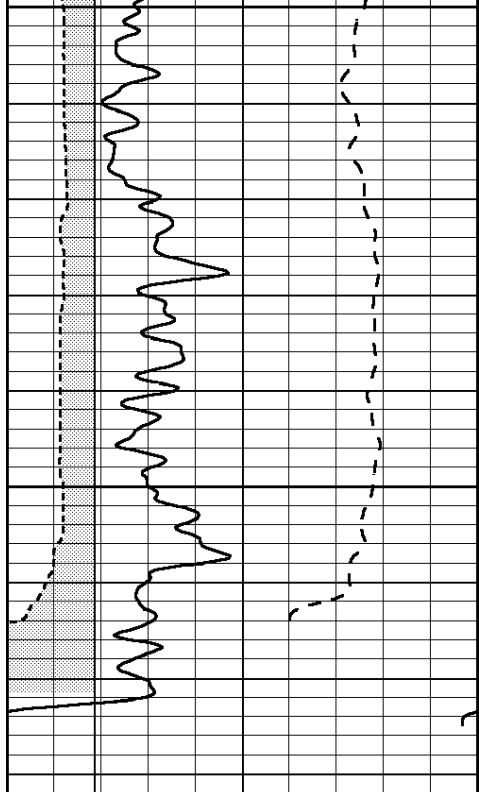


# REPEAT SECTION

Database File: 009056rag.db  
 Dataset Pathname: pass2.1  
 Presentation Format: rag  
 Dataset Creation: Tue May 01 09:53:05 2012 by Calc Open-Cased 090629  
 Charted by: Depth in Feet scaled 1:240

0	GAMMA RAY (GAPI)	150	ABHV	0.2	GUARD (Ohm-m)	2000
-100	SP (mV)	100	10 (ft3)	0 0	NEUTRON (NAPI)	1000
6	CALIPER (in)	16	TBHV			
			0 (ft3)	10		





0	GAMMA RAY (GAPI)	150	ABHV	0.2	GUARD (Ohm-m)	2000
-100	SP (mV)	100	10 (ft3)	0 0	NEUTRON (NAPI)	1000
6	CALIPER (in)	16	TBHV			
			0 (ft3)	10		