

**The Perforators
LLC**

**MICRO
RESISTIVITY
LOG**

Company Jason Oil Company
 Well Weber #1
 Field Unamed
 County Russell
 State Kansas

Location: API #: 15 167 23781
 Other Services: C/NL, D/L

SEC-13 TWP-13S RGE-12W
 Permanent Datum Ground Level Elevation 1890'
 County Kansas
 Permian Datum Ground Level Elevation 1890'
 County Kansas
 State Oiling Measure From KB & AGL
 Run Number 3-20-12
 Depth Logged 3385'
 Bottom Logged Interval 3385'

K.B. 1869
 D.F. 1867
 C.L. 1860

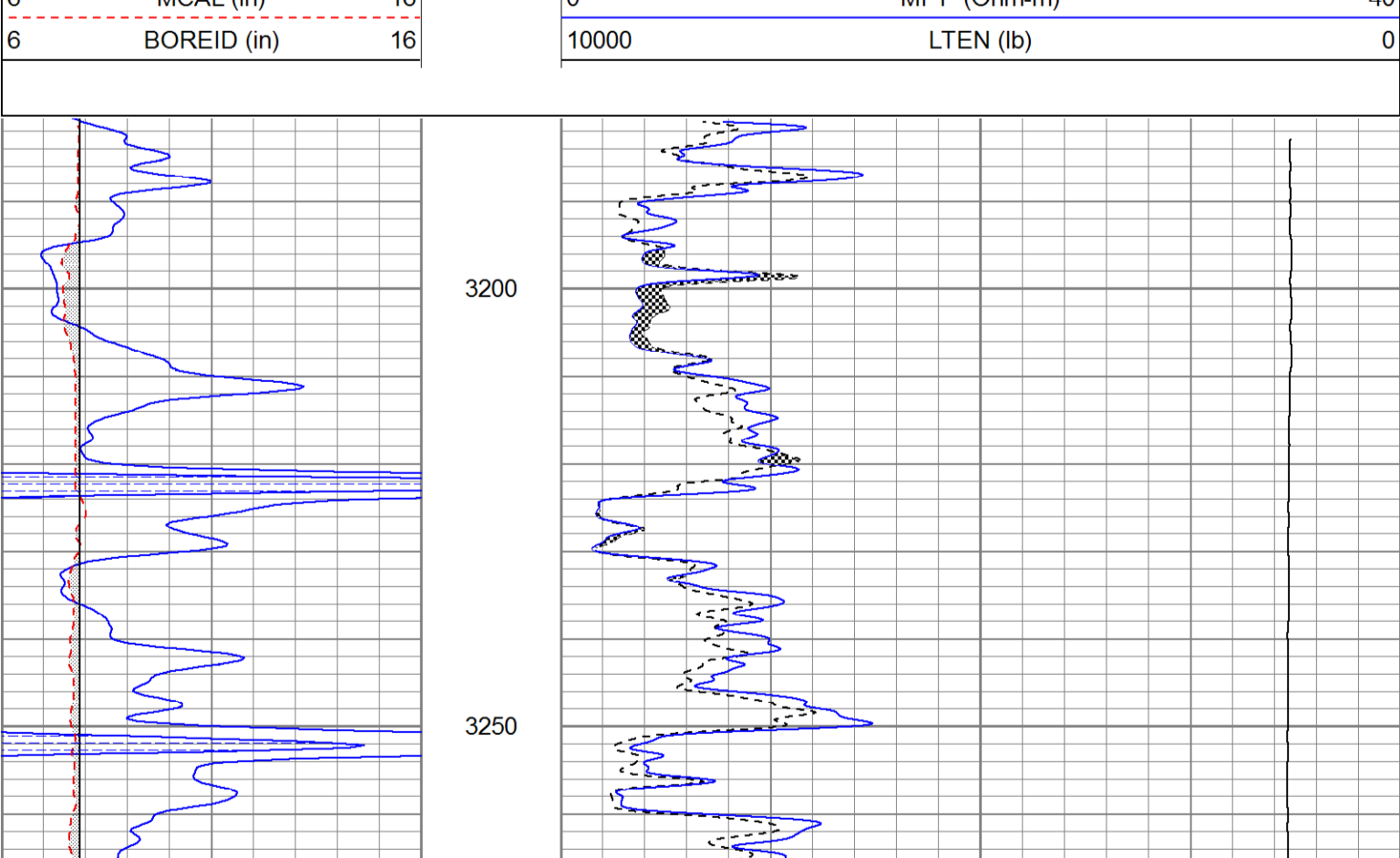
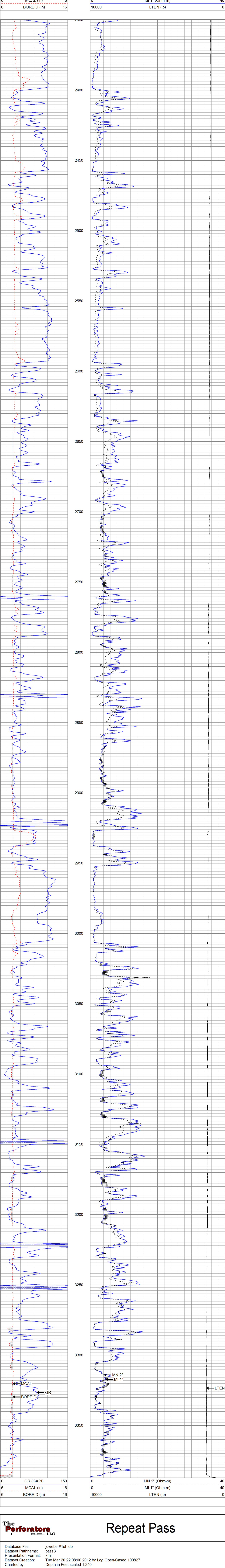
<<< Fold Here >>>

All interpretations are opinions based on inferences from electrical or other measurements and we cannot and do not guarantee the accuracy or correctness of any interpretation, and we shall not, except in the case of gross or willful negligence on our part, be liable or responsible for any loss, costs, damages, or expenses incurred or sustained by anyone resulting from any interpretation made by any of our officers, agents or employees. These interpretations are also subject to our general terms and conditions set out in our current Price Schedule.

Comments

Bunker Hill S to stop sign, E to 199th, S4, W1, NE into.

Thank you for using The Perforators LLC
 Hays, KS 785-621-4604



Calibration Report

Database File: joweber#1oh.db
 Dataset Pathname: pass3
 Dataset Creation: Tue Mar 20 22:08:00 2012 by Log Open-Cased 100827

Microlog Calibration Report

Serial-Model: Performed: 1600-Pengo Tue Mar 20 19:40:22 2012

| | Readings | | References | | Results | |
|---------|----------|--------|------------|---------|---------|---------|
| | Zero | Cal | Zero | Cal | m | b |
| Normal | 0.0080 | 0.5905 | 0.0000 | 11.0000 | Ohm-m | 18.8849 |
| Inverse | -0.0033 | 0.7677 | 0.0000 | 9.0000 | Ohm-m | 11.6744 |
| Caliper | 1.1428 | 2.4810 | 8.1500 | 14.0000 | in | 4.3714 |

Gamma Ray Calibration Report

Serial Number: Tool Model: Performed: 2000 P2000 Fri Mar 16 04:44:31 2012

Calibrator Value: 1.0 GAPI

Background Reading: 0.0 cps

Calibrator Reading: 1.0 cps

Sensitivity: 0.2200 GAPI/cps

| Sensor | Offset (ft) |
|--------|-------------|
| GR | 8.38 |
| MN | 1.30 |
| MI | 1.30 |
| MCAL | 1.30 |

| Description | Len (ft) | OD (in) | Wt (lb) |
|-----------------|----------|---------|---------|
| GR-P2000 (2000) | 3.67 | 3.25 | 40.00 |
| ML-Pengo (1600) | 6.96 | 3.50 | 100.00 |

Dataset: joweber#1oh.db: field/well/run1/pass4
 Total Length: 10.63 ft
 Total Weight: 140.00 lb
 O.D.: 3.50 in