



**MIDWEST SURVEYS**  
 LOGGING - PERFORATING - CONSULTING SERVICES  
 P.O. Box 68, Osawatomie, KS 66064  
 913 / 755 - 2128

**GAMMA RAY / NEUTRON / CCL**

File No. \_\_\_\_\_

Company **Colt Energy, Inc.**

Well **Kirk No. KD-1**

Field **Iola**

County **Allen** State **Kansas**

Location **660' FSL & 1540' FEL**

**E/2-E/2-SW-SE**

Other Services **Perforate**

Sec. 9 **Typ. 24s** **Rge. 18e** **Elevation 995'**

Permament Datum **GL** **Elevation 995'**

Log Measured From **GL** **K.B. NA**

Drilling Measured From **GL** **D.F. NA**

Date **01-26-2012** **GL 995'**

Run Number **One**

Depth Logger **1080.0**

Bottom Logged Interval **1054.0**

Top Log Interval **20.0**

Fluid Level **Full**

Type Fluid **Water**

Density / Viscosity **NA**

Salinity - PPM Cl **NA**

Max. Recorded Temp **NA**

Estimated Cement Top **NA**

Equipment No. **107** **Osawatimie**

Recorded By **Steve Windisch**

Witnessed By **John Arntman**

Run **One**

BIT **FRM** **TO** **SIZE**

**12.25"** **20.0** **8.625"**

**6.75"** **20.0** **4.50"**

**1080.0** **0.0** **10.5#**

**1080.0** **0.0** **At**

**Flapper** **Set** **At**

**1056.6**

API # 15-001-30,246

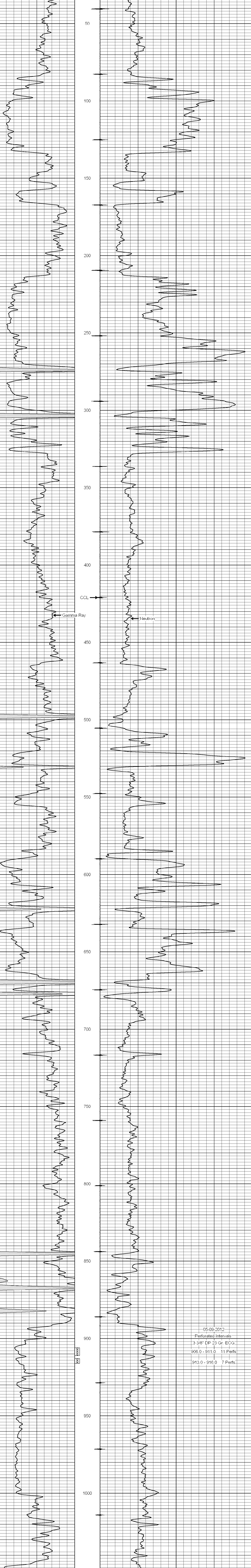
<<< Fold Here >>>

All interpretations are opinions based on inferences from electrical or other measurements and we cannot and do not guarantee the accuracy or correctness of any interpretation, and we shall not, except in the case of gross or willful negligence on our part, be liable or responsible for any loss, costs, damages, or expenses incurred or sustained by anyone resulting from any interpretation made by any of our officers, agents or employees. These interpretations are also subject to our general terms and conditions set out in our current Price Schedule.

Comments

Drilling Contractor :  
**Kurt Finney Drilling Company**

Database File: kirk1kd.db  
 Dataset Pathname: pass1  
 Presentation Format: gr-n-ccl  
 Dataset Creation: Fri Feb 24 15:05:59 2012  
 Charted by: Depth in Feet scaled 1:240



05-09-2012  
 Perforated Intervals  
 3 3/8" DP 23 Gr. ECG  
 906.0 - 911.0 11 Perfs  
 913.0 - 916.0 7 Perfs