

MIDWEST SURVEYS
 LOGGING - PERFORATING - CONSULTING SERVICES
 P.O. Box 68, Osawatomie, KS 66064
 913 / 755 - 2128

GAMMA RAY / NEUTRON / CCL

File No. _____

Company **Colt Energy, Inc.**

Well **Kirk No. KH-5**

Field **Iola**

County **Allen**

State **Kansas**

Location **1540' FSL & 3300' FEL**

SZ-SZ-NE-SW

Other Services
Perforate

Sec. 9 Typ. 24S Ege. 18e 1014' Elevation

Perament Datum GL GL K.B. NA

Log measured From GL GL D.F. NA

Drilling Measured From GL 1014' G.L. 1014'

Date 01-26-2012

Run Number One 1090.0

Depth Driller 1090.0

Depth Logger 1075.2

Bottom Logged Interval 1074.2

Top Log Interval 20.0

Fluid Level Full

Type Fluid Water

Density / Viscosity NA

Salinity / PPM Cl NA

Max. Recorded Temp NA

Estimated Cement Top 0.0

Equipment No. Location 107 Osawatomie

Recorded By Steve Windisch

Witnessed By John Aneman

BOREHOLE RECORD

CASING RECORD

RUN	BIT	FROM	TO	SIZE	WT.	FROM	TO
One	12.25"	0.0	20.0	8.625"	0.0	0.0	20.0
Two	6.75"	20.0	1090.0	4.50"	10.5#	0.0	1080.15
				Flapper	Set	At	1078.15

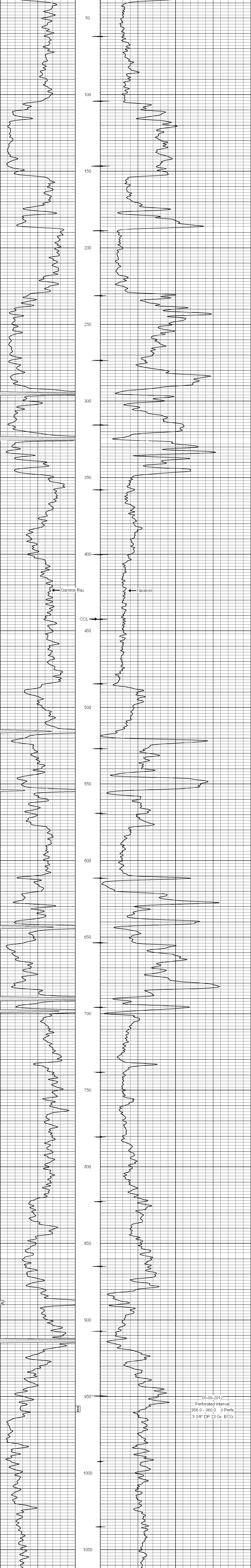
<<< Fold Here >>>

All interpretations are opinions based on inferences from electrical or other measurements and we cannot and do not guarantee the accuracy or correctness of any interpretation, and we shall not, except in the case of gross or willful negligence on our part, be liable or responsible for any loss, costs, damages, or expenses incurred or sustained by anyone resulting from any interpretation made by any of our officers, agents or employees. These interpretations are also subject to our general terms and conditions set out in our current Price Schedule.

Comments

Drilling Contractor :
Kurt Finney Drilling Company

Database File: kirk5kh.db
 Dataset Pathname: pass1
 Presentation Format: gr-n-ccl
 Dataset Creation: Thu Jan 26 10:26:20 2012 by Log SCH 111116
 Charted by: Depth in Feet scaled 1:240



05-09-2012
 Perforated Interval
 956.0 - 960.0 9 Perfs
 3 3/8" DP 23 Gr. ECG