



DUAL INDUCTION LL3/GR LOG

Company	COLT ENERGY, INC.
Well	KIRK # KH5
Field	IOLA
County	ALLEN
State	KANSAS
Location:	SEC 9 TWP 24S RGE 18E S12 S12 NE SW 1540' FS & 3300' FEL
API #:	15-001-30252-0000
Other Services	CDL/S/M
Permanent Datum	GL
Log Measured From	GL
Drilling Measured From	GL
Date	1-18-2012
Run Number	10397
Depth (feet)	10397
Depth (log)	10397
Tool Joint Interval	10397 - 10397
Caseing Diameter	8.568 @ 20'
BI Size	6.348
Type Fluid in Hole	MUD
Operator / Agency	PIT
Source of Sample	CDL/Pass2.2
Run @ Mass Temp	2.10 @ 55
Run @ Mass Temp	2.52 @ 55
Run @ Mass Temp	1.88 @ 55
Source of Run / Time	10:45 AM
Run @ Bit Rate	10:45 AM
Time Outdoors Started	OWZ
Maximum Recorded Temperature	HOMINY, OK
Equipment Number	LOWERY, OK
Location	MASSHULL
Recorded By	MASSHULL
Witnessed By	MASSHULL

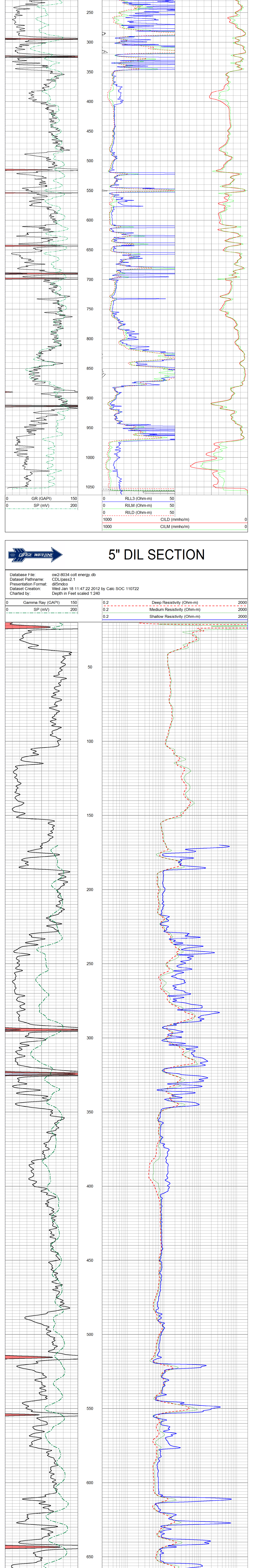
All interpretations are opinions based on inferences from electrical or other measurements and we cannot and do not guarantee the accuracy or correctness of any interpretation, and we shall not, except in the case of gross or willful negligence on our part, be liable or responsible for any loss, costs, damages, or expenses incurred or sustained by anyone resulting from any interpretation made by any of our officers, agents or employees. These interpretations are also subject to our general terms and conditions set out in our current Price Schedule.

Comments

OW2-8034
CREW: JOHNSON

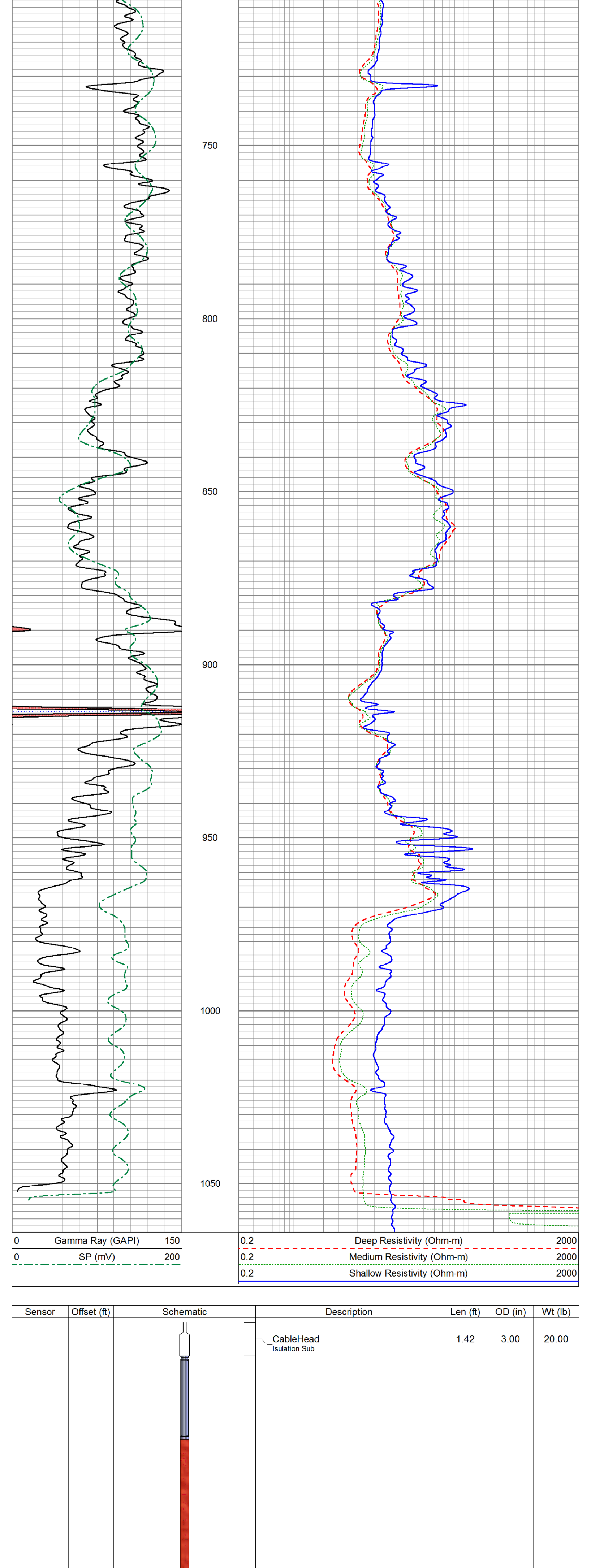
2" DIL SECTION

Database File: ow2-8034 colt energy.db
 Dataset Pathname: CDI/Pass2.2
 Presentation Format: dil2mcdol
 Dataset Creation: Wed Jan 18 11:47:29 2012 by Calc SOC 110722
 Charted by: Depth in Feet scaled 1:600



5" DIL SECTION

Database File: ow2-8034 colt energy.db
 Dataset Pathname: CDI/Pass2.1
 Presentation Format: dil5mcd2
 Dataset Creation: Wed Jan 18 11:47:22 2012 by Calc SOC 110722
 Charted by: Depth in Feet scaled 1:240



Sensor	Offset (ft)	Schematic	Description	Len (ft)	OD (in)	Wt (lb)
			Cable-Head Isolation Sub	1.42	3.00	20.00
CILD SP	10.92 10.92		DIL-GEAR (158) Dual Induction Electrical Log	20.08	4.00	345.00
CILM	7.00					
RLL3	1.67					

Dataset: ow2-8034 colt energy.db; field/well/CDL/Pass2
 Total Length: 21.50 ft
 Total Weight: 365.00 lb
 O.D.: 4.00 in