



CHAUWEE, KANSAS

**GAMMA RAY
NEUTRON
COMPLETION LOG**

Company	A X & P, INC.	Well	UNIT 1-WOLFE WEST WW#29G
Field	NEODESHA	County	WILSON
State	KANSAS	Location:	SEC 29 TWP 30S RGE 16E
County	WILSON	APR #:	15-205-27991-00-00
State	KANSAS	Location:	2250' FSL & 3140' FEL SW/NE SW
Company	A X & P, INC.	Well	UNIT 1-WOLFE WEST WW#29G
Field	NEODESHA	County	WILSON
State	KANSAS	Location:	SEC 29 TWP 30S RGE 16E
County	WILSON	APR #:	15-205-27991-00-00
State	KANSAS	Location:	2250' FSL & 3140' FEL SW/NE SW
Permanent Datum	GL	Elevation	798 EST
Log Measured From	GL	K.B.	GL 798 EST
Drilling Measured From	GL	D.L.	798 EST
Date	11-17-11	Run Number	1 NW
Depth Driller	847.4'	Depth Logger	847.4'
Top Log Interval	0	Bottom Logged Interval	847.4'
Fluid Level	FULL	Type Fluid	WATER
Production Casing	2 7/8" @ TD	Max. Recorded Temp	@
Estimated Cement Top	@	Calculated Cement Top	@
Amount & Type Cement		Drilling Contractor	
Equipment Number	107	Location	HALL, R
Recorded By	HANKE, JI	Witnessed By	

<<< Fold Here >>>

All interpretations are opinions based on inferences from electrical or other measurements and we cannot and do not guarantee the accuracy or correctness of any interpretation, and we shall not, except in the case of gross or willful negligence on our part, be liable or responsible for any loss, costs, damages, or expenses incurred or sustained by anyone resulting from any interpretation made by any of our officers, agents or employees. These interpretations are also subject to our general terms and conditions set out in our current Price Schedule.

Comments

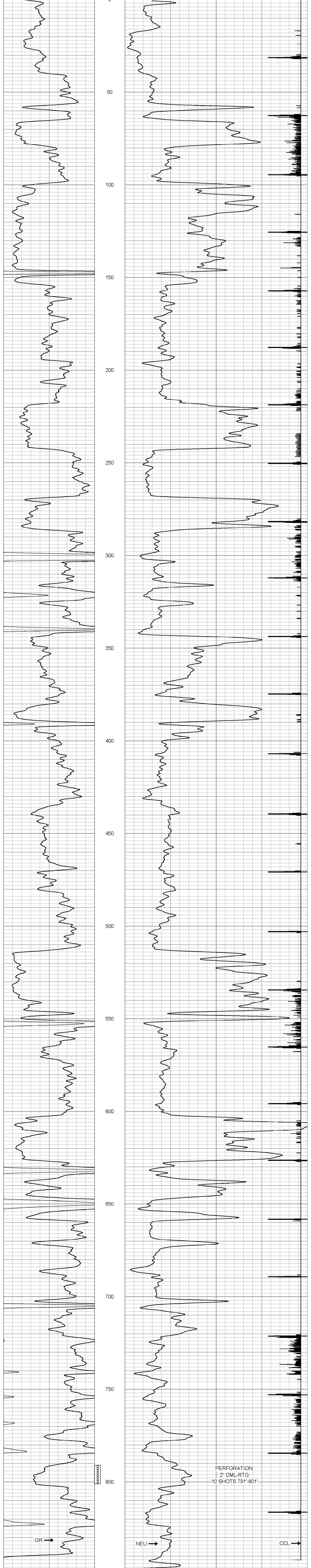
THANK YOU

Sensor	Offset (ft)	Schematic	Description	Len (ft)	OD (in)	Wt (lb)
GR	7.59		GR-TITAN_169 (TIT169_001) Titan 1 11/16" Gamma Ray	4.75	1.69	20.00
CCL	5.05		CCL-TITAN_169 (TIT169) Titan 1 11/16" Logging CCL	1.83	1.69	7.50
NEU	0.63		NEU-TITAN_169 (TIT169_001) Titan 1 11/16" Neutron	4.33	1.69	20.00

Dataset: ww#29g db: field/well/run1/pass1
Total Length: 10.92 ft
Total Weight: 47.50 lb
O.D.: 1.69 in

Database File: g:\ww#29g.db
Dataset Pathname: pass1
Presentation Format: gr-n-ccl
Dataset Creation: Thu Nov 17 12:50:19 2011 by Log Std Casedhole 07122
Charted by: Depth in Feet scaled 1.240

0	GR	150	150	NEU	1700
150	GR	300		13	CCL
					-1



0	GR	150	150	NEU	1700
150	GR	300		13	CCL
					-1



Company A X & P, INC.
Well UNIT 1-WOLFE WEST WW#29G
Field NEODESHA
County WILSON SEC. 29 TWP. 30S RGE. 16E
State KANSAS Date 11-17-11