



CHANUTE, KANSAS

**GAMMA RAY
NEUTRON
COMPLETION LOG**

Company: VERDE OIL COMPANY
Well: CAMPBELL #1-6-10
Field: HUMBOLDT-CHANUTE
County: ALLEN
State: KANSAS

Location: 1815 FSL & 1485 FEL
NE SE NW SE
AP # : 15-001-30269-00-00
Other Services

Permanent Datum: SEC 29 TWP 26S RGE 20E
Log Measured From: GL
Drilling Measured From: GL

Date: 12-29-11
Run Number: 1 NW1
Depth Driller: 898'

Top Log Interval: 0
Bottom Log Interval: 872.6'
Fluid Level: FULL

Type Fluid: WATER
Production Casing: 2 7/8" @ TD
Max. Recorded Temp: @
Estimated Cement Top: @
Calculated Cement Top: @

Amount & Type Cement: @
Amount & Type Admix: @
Drilling Contractor: @
Equipment Number: 109

Location: SCLIMON, B.
Recorded By: DALE, J.
Witnessed By:

<<< Fold Here >>>

All interpretations are opinions based on inferences from electrical or other measurements and we cannot and do not guarantee the accuracy or correctness of any interpretation, and we shall not, except in the case of gross or willful negligence on our part, be liable or responsible for any loss, costs, damages, or expenses incurred or sustained by anyone resulting from any interpretation made by any of our officers, agents or employees. These interpretations are also subject to our general terms and conditions set out in our current Price Schedule.

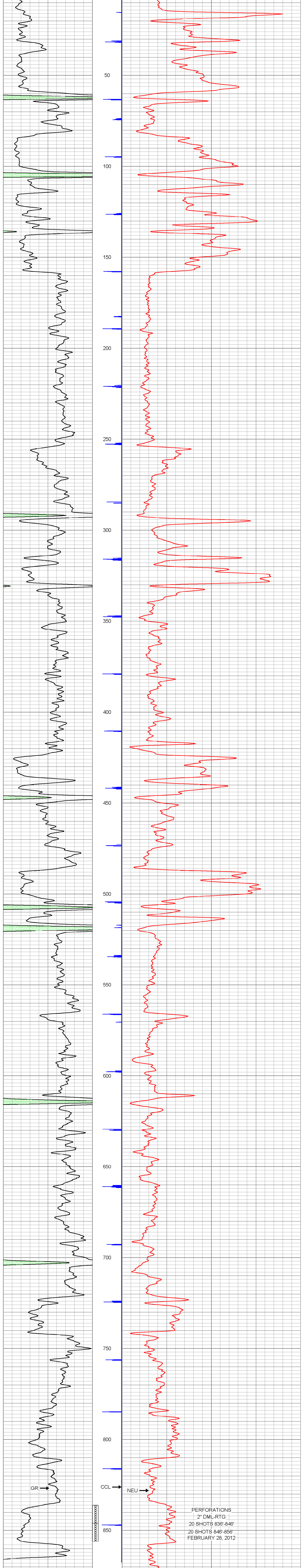
Comments

THANK YOU

Sensor	Offset (ft)	Schematic	Description	Len (ft)	OD (in)	Wt (lb)
GR	7.59		GR-TITAN_169 (TIT169_001) Titan 1 11/16" Gamma Ray	4.75	1.69	20.00
CCL	5.05		CCL-TITAN_169 (TIT169) Titan 1 11/16" Logging CCL	1.83	1.69	7.50
NEU	0.63		NEU-TITAN (TIT801) TITAN 1 11/16" Neutron	4.33	1.69	25.00

Dataset: campbell # i-6-10-db: field/well/run1/pass1
Total Length: 10.92 ft
Total Weight: 52.50 lb
O.D.: 1.69 in

Database File: f:\verde oil company\campbell #-6-10\campbell # i-6-10-db
Dataset Pathname: pass1
Presentation Format: gr-n-ccl
Dataset Creation: Thu Dec 29 12:02:57 2011 by Log Std Casedhole 09061
Charted by: Depth in Feet scaled 1:240



PERFORATIONS
2" DML-RTG
20 SHOTS 836'-846'
20 SHOTS 846'-856'
FEBRUARY 28, 2012



Company: VERDE OIL COMPANY
Well: CAMPBELL #1-6-10
Field: HUMBOLDT-CHANUTE
County: ALLEN SEC. 29 TWP. 26S RGE. 20E
State: KANSAS Date: 12-29-11