



Sector Bond / Gamma Ray
CCL Log

Ph. (785) 625-3858

15-171-20878-00-00

API No.

Company New Gulf Operating, LLC.

Well A.C. Felt No. 1

Field Wildcat

County Scott State Kansas

Location 2523' FNL & 2621' FEL

Other Services
Full Lubricator
Gauge Ring

Sec: 6 Twp: 18 S Rge: 34 W

Permanent Datum Ground Level Elevation 3154

Log Measured From Kelly Bushing 10 Ft. Above Perm. Datum

K.B. 3164
D.F.
G.L. 3154

Drilling Measured From Kelly Bushing

Run Number One

Date Survey 06/05/2012

Date Cementing 05/24/2012

Type Cementing Operation Primary

Depth Driller 5082

Depth Logger 5032

Logged Interval 5031 to 3350 2500 to 500

Casing Driller 5.5 @ TD @

Float Collar -- D.V. Tool // 2440

Squeeze Depth //

Amount & Type Cement //

Amount & Type Admix //

Type Fluid In Hole Water

Fluid Level 502

Salinity PPM CL //

Weight lb/gal -- Vis. // //

Approx. Logged Cement Top 3474

Calculated Cement Top //

Max. Hole Temperature 126

Tool No. PRBT71

Spacing Recorded 3-5

Equipment -- Location 71 Hays

Recorded By Scott Clermont

Witnessed By Jim Henkle

<<< Fold Here >>>

All interpretations are opinions based on inferences from electrical or other measurements and we cannot and do not guarantee the accuracy or correctness of any interpretation, and we shall not, except in the case of gross or willful negligence on our part, be liable or responsible for any loss, costs, damages, or expenses incurred or sustained by anyone resulting from any interpretation made by any of our officers, agents or employees. These interpretations are also subject to our general terms and conditions set out in our current Price Schedule.

Comments

Thank you for using Log-Tech, Inc.
(785) 625 3858

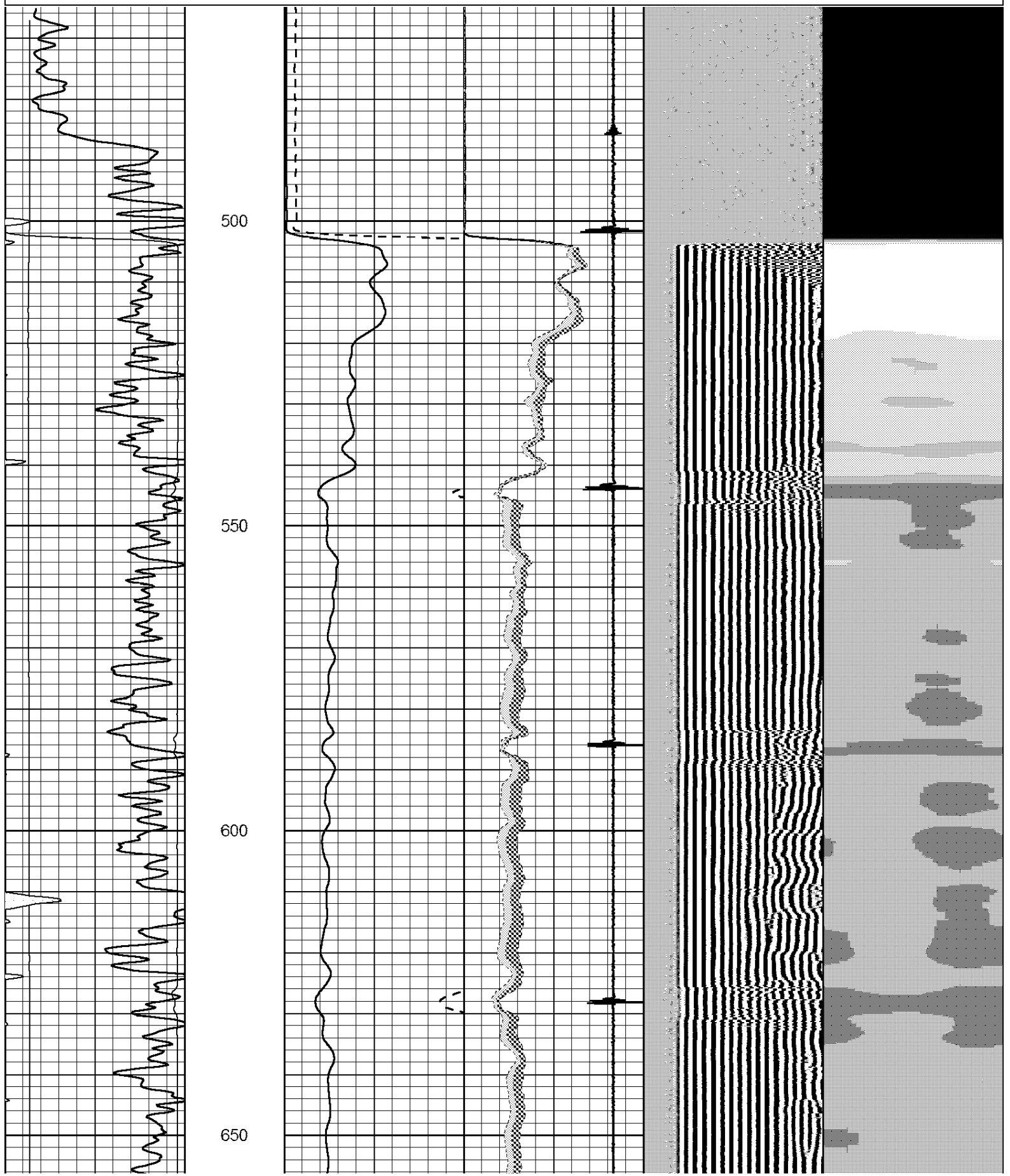
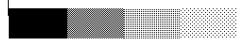
Scott City Ks, 12 West to County Line,
2 1/2 North, East and South Into

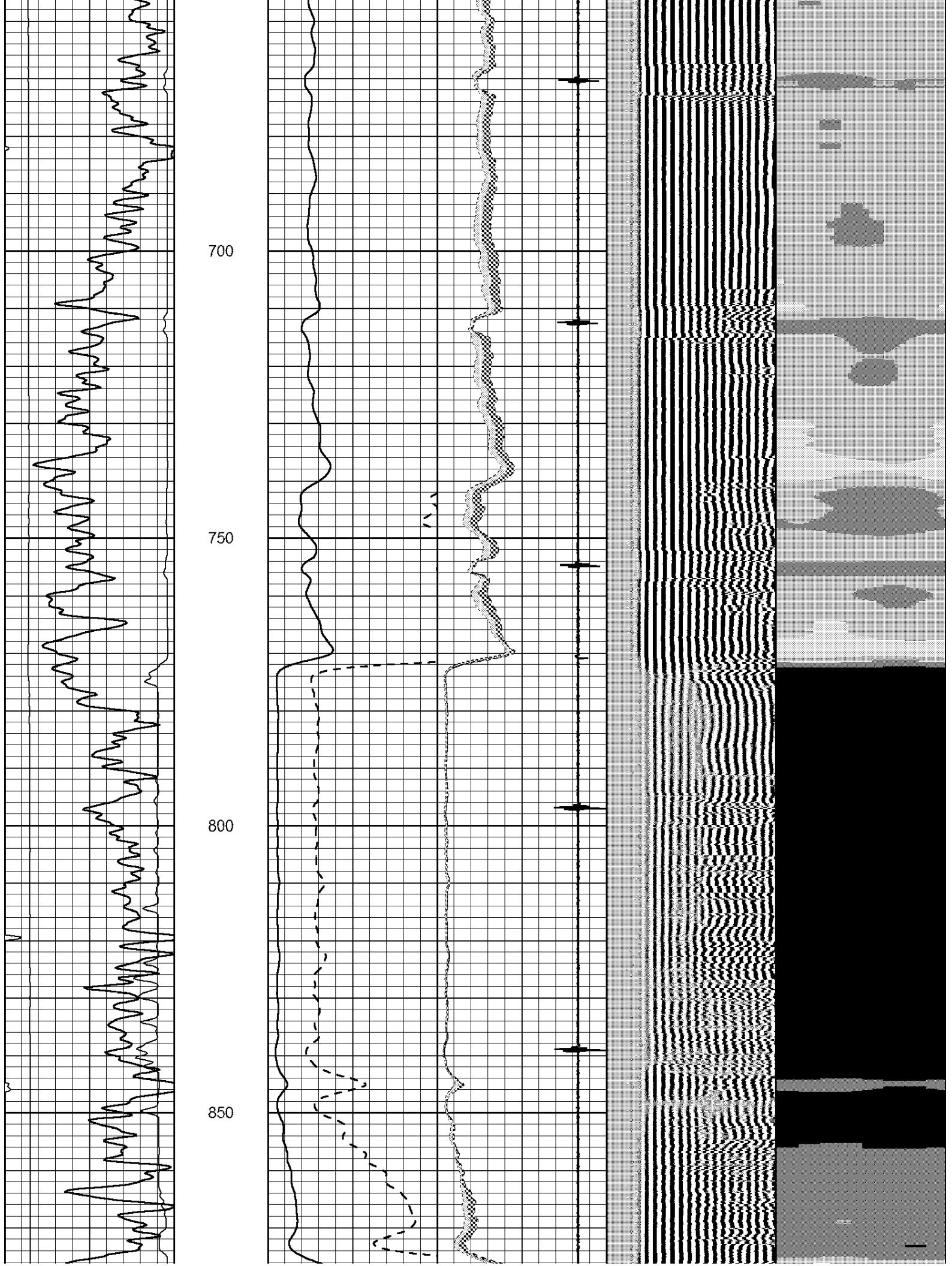
Database File: newgulf_a.db
Dataset Pathname: sgrcbl/pass3
Presentation Format: scbl02
Dataset Creation: Tue Jun 05 10:22:22 2012 by Log SCH 111116
Charted by: Depth in Feet scaled 1:240

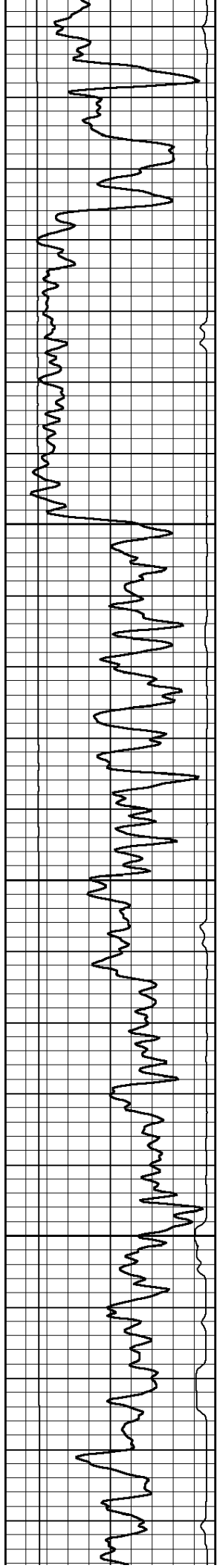
0	GR	150
0	LTEN (lb)	3000
TT3FT		
1200	(usec)	254

0	AMP (mV)	100	0	AMPAVG	150	200	VDL	1200
0	AMPx5 (mV)	20	0	AMPMAX	150			
-----			0	AMPMIN	150			
-----			4	CCL	-0.8			

1	Cement Map	8
15		75





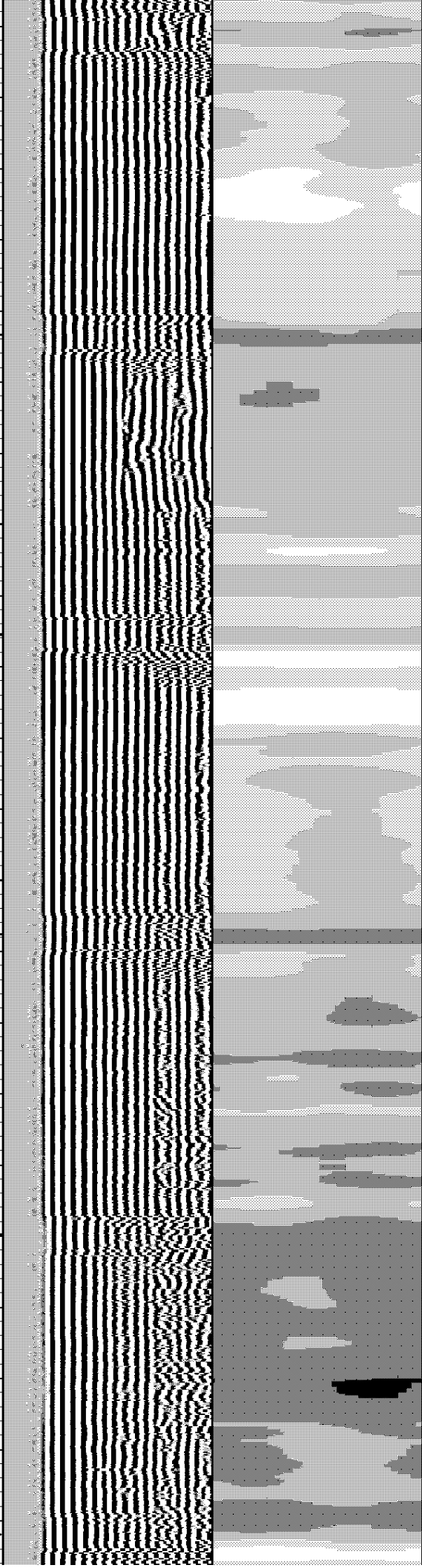
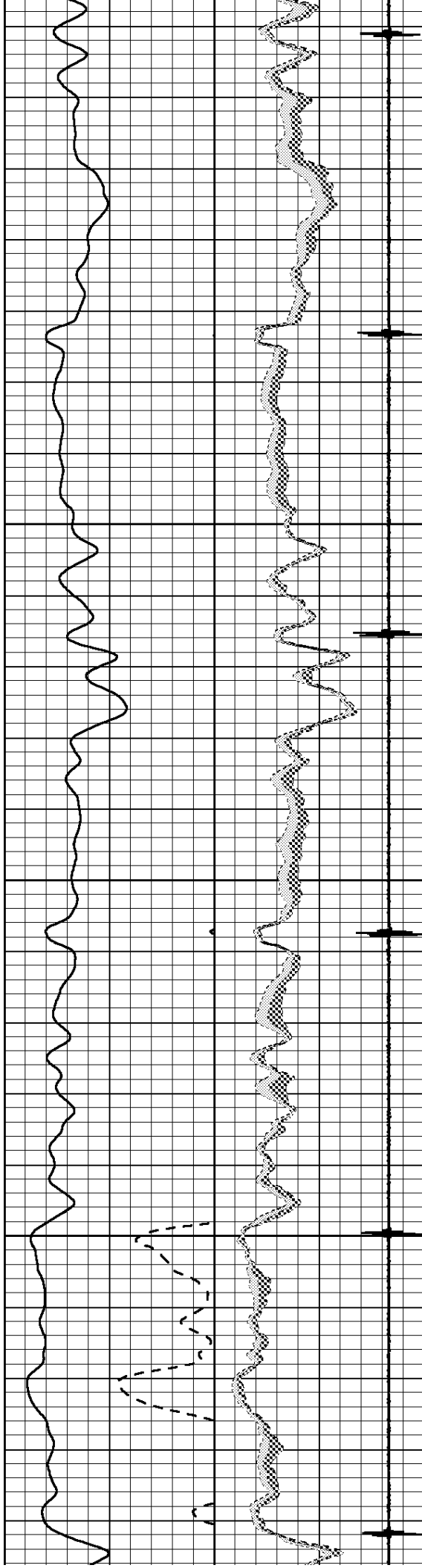


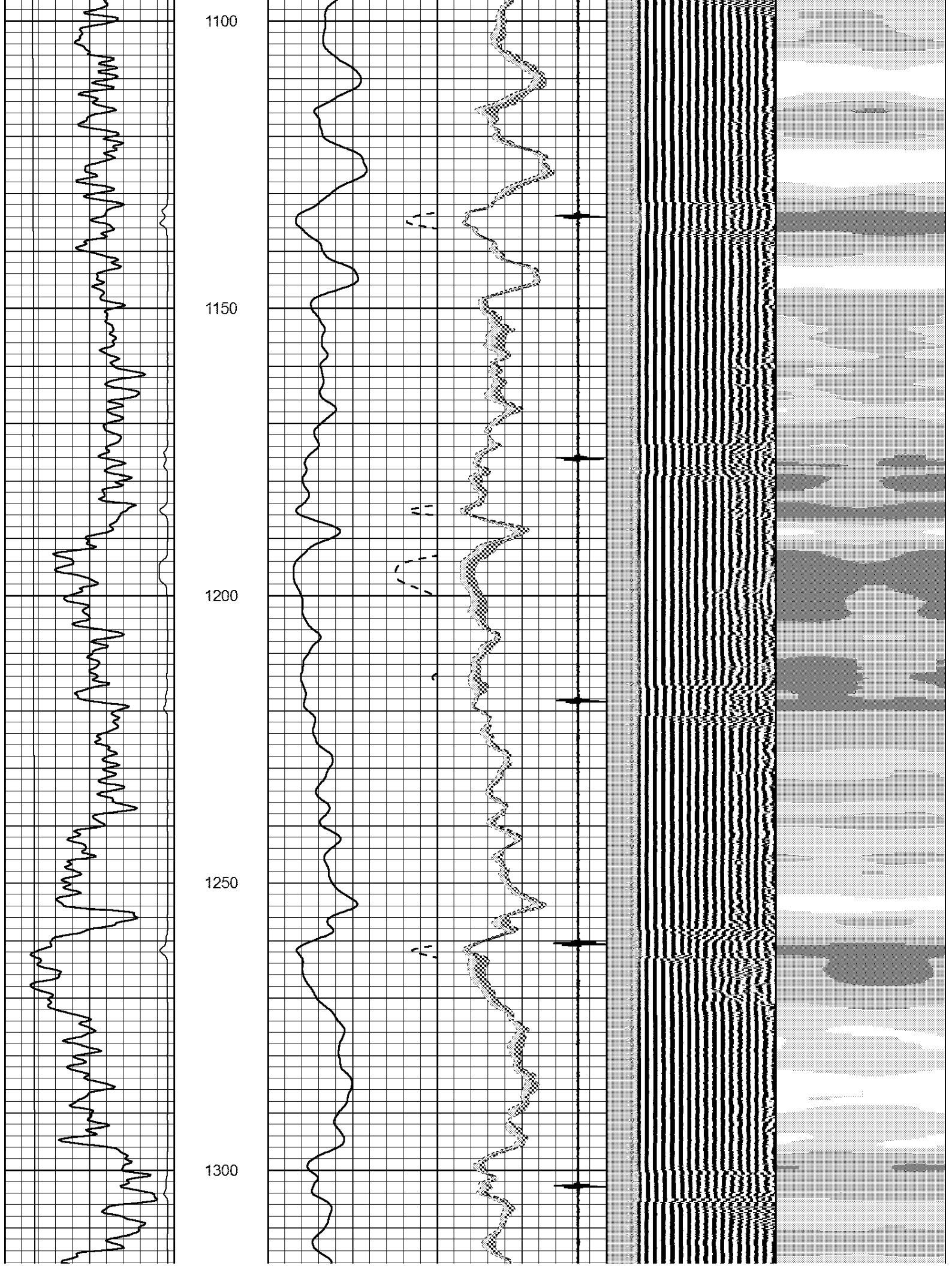
900

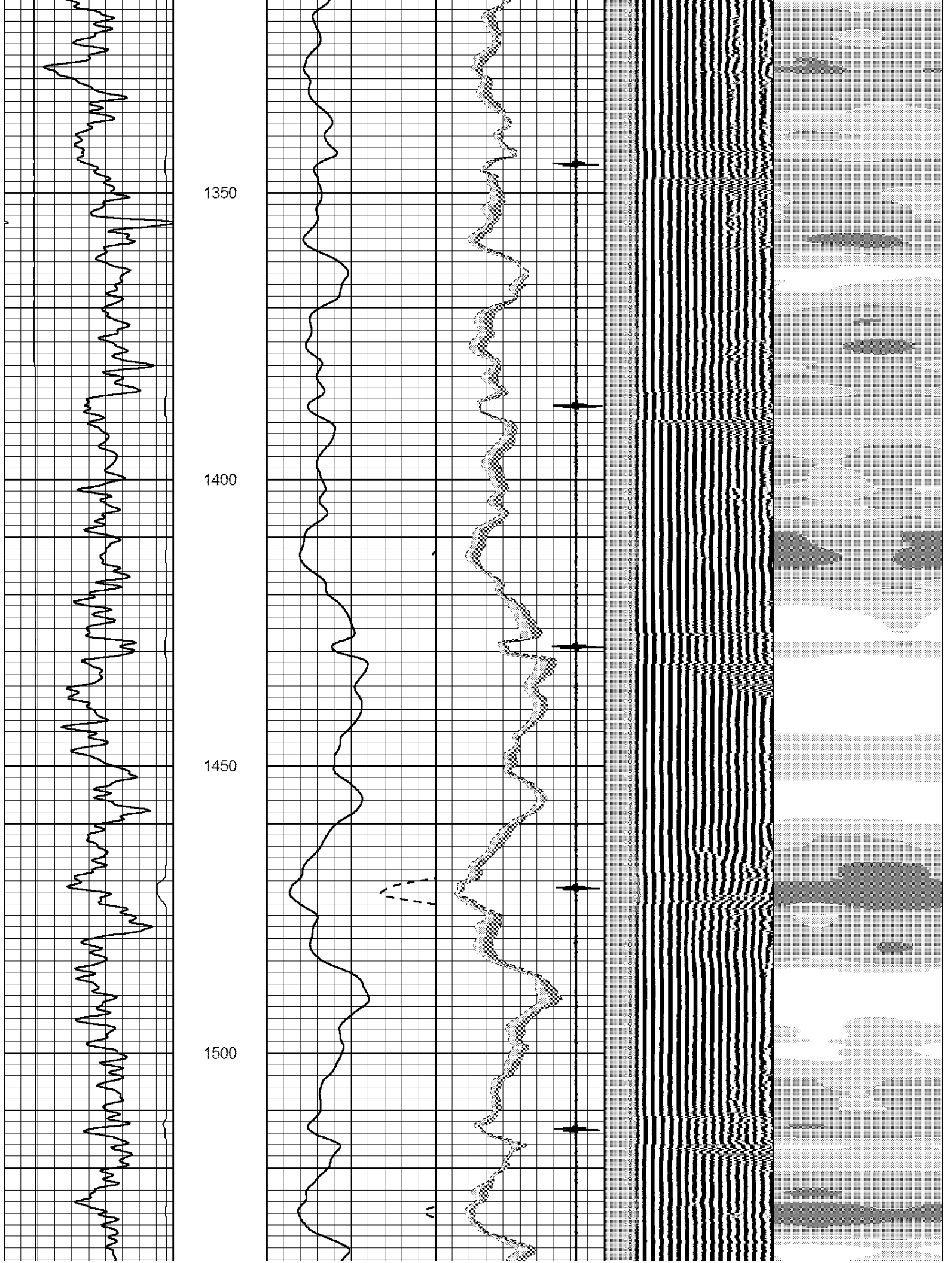
950

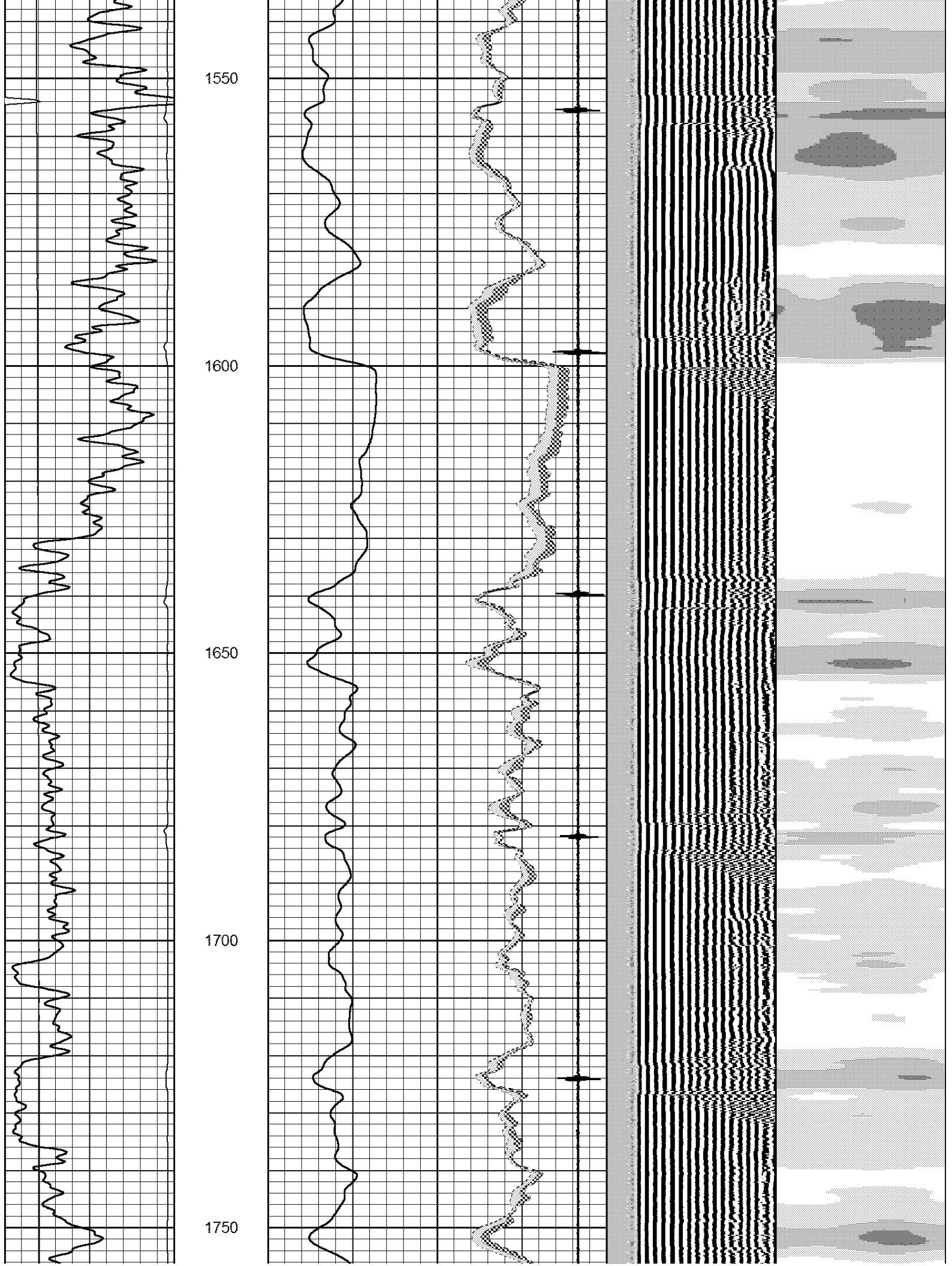
1000

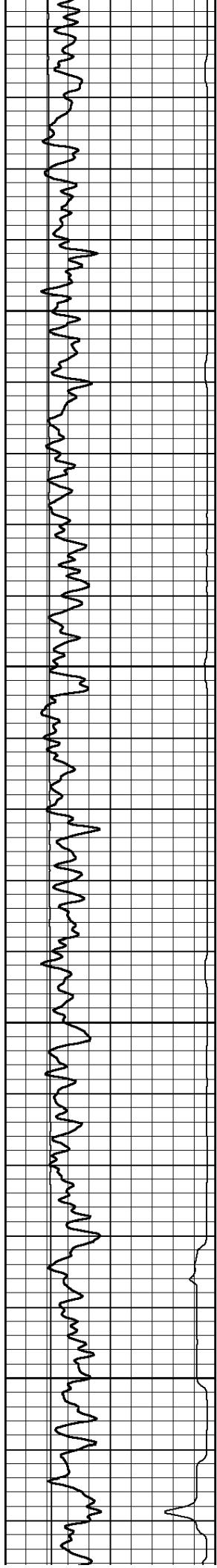
1050









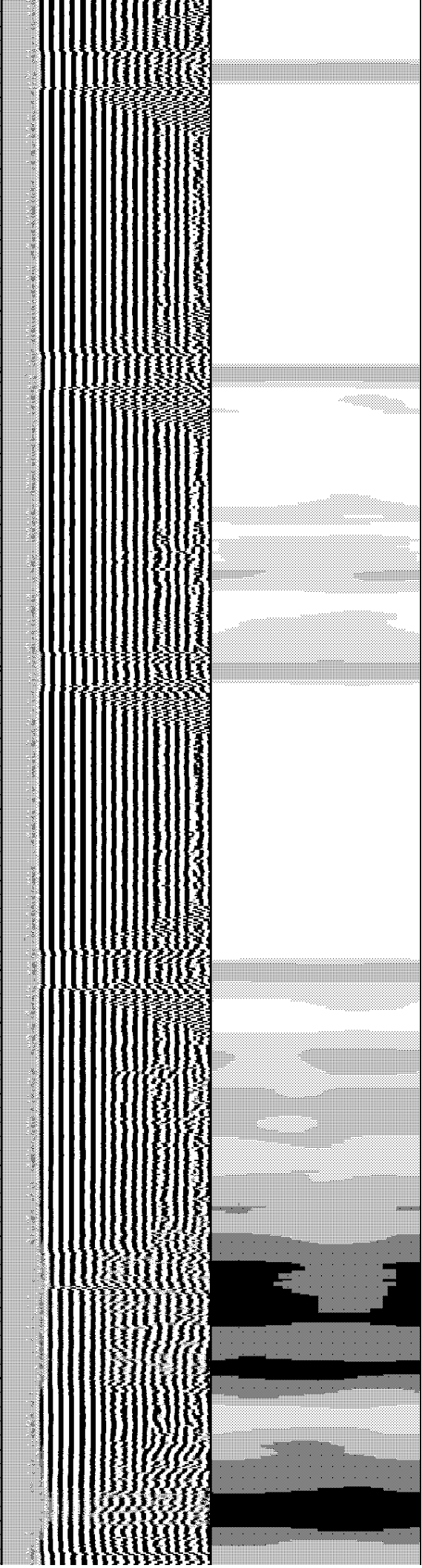
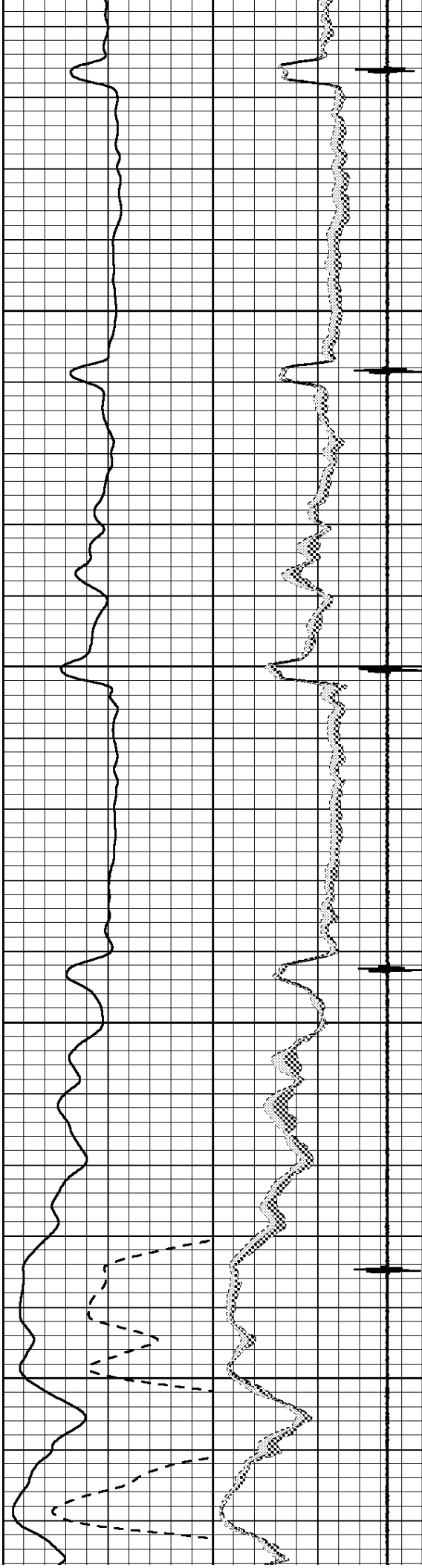


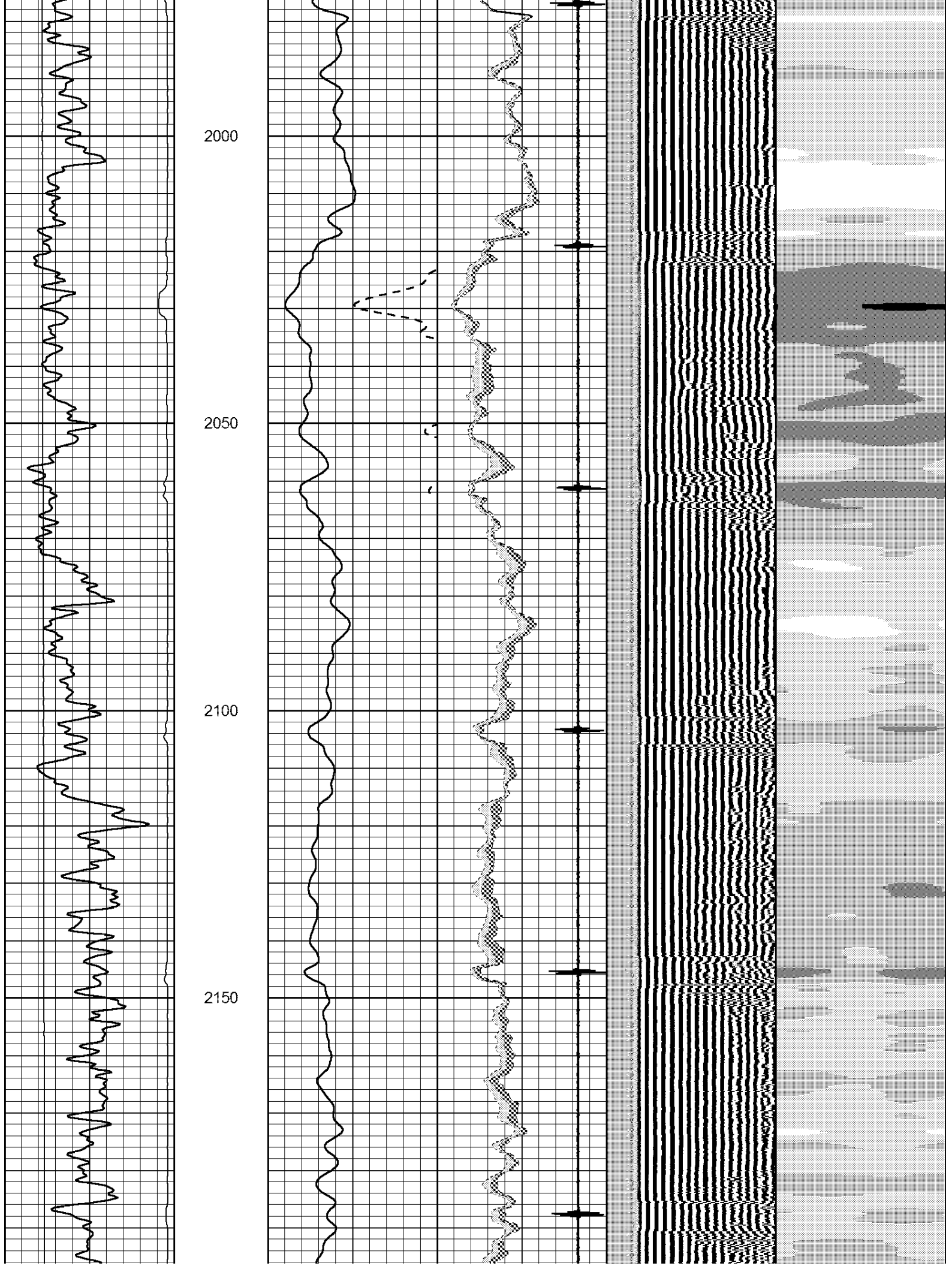
1800

1850

1900

1950





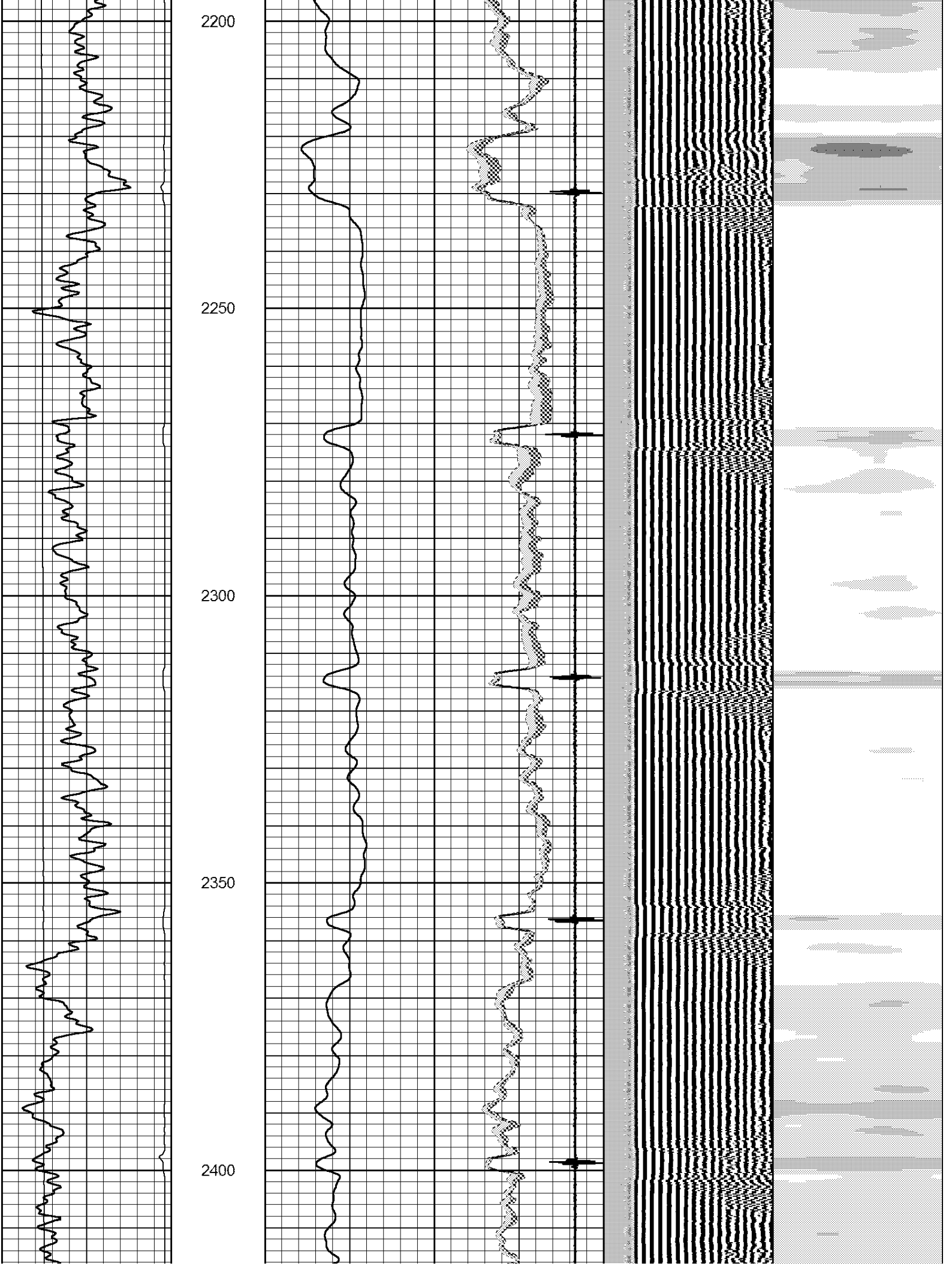
2200

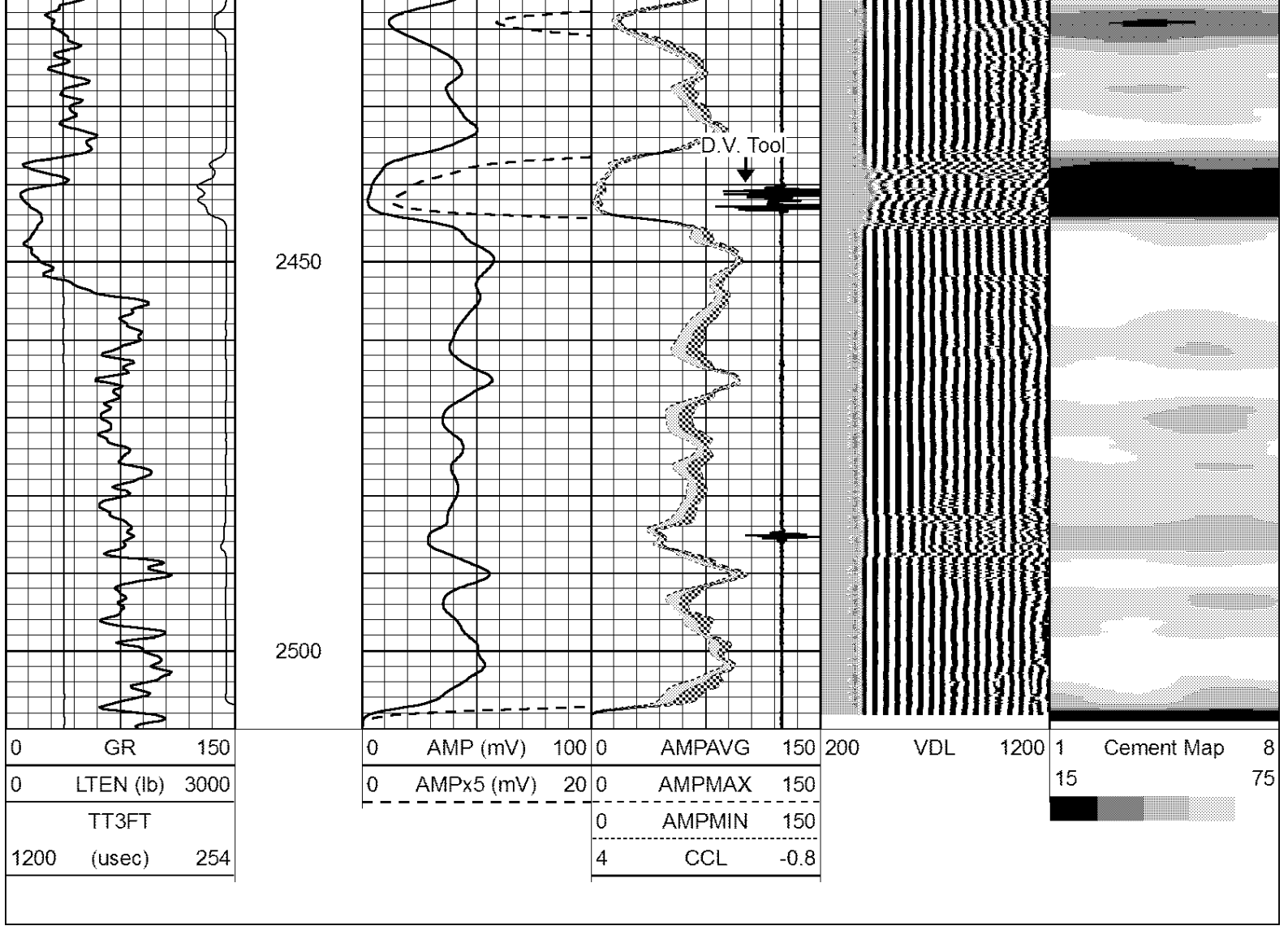
2250

2300

2350

2400

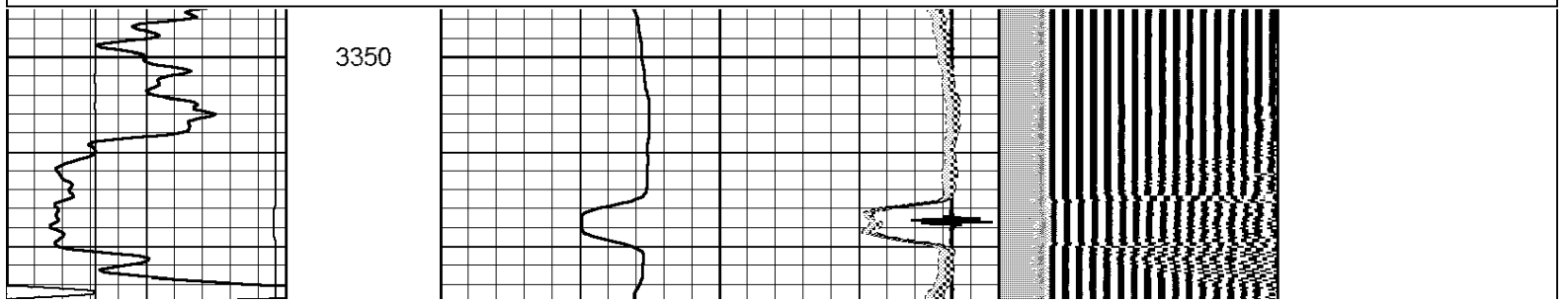
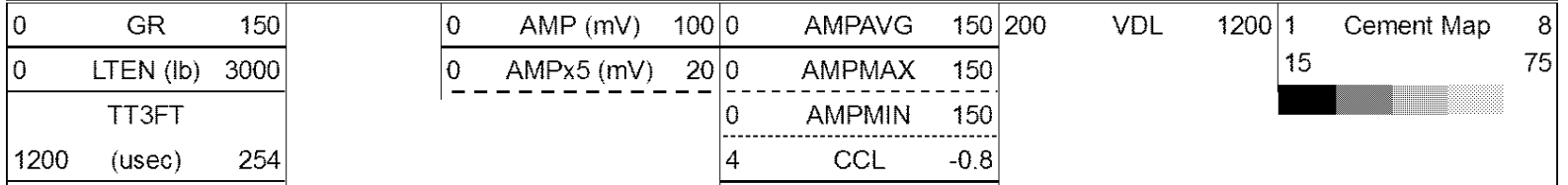


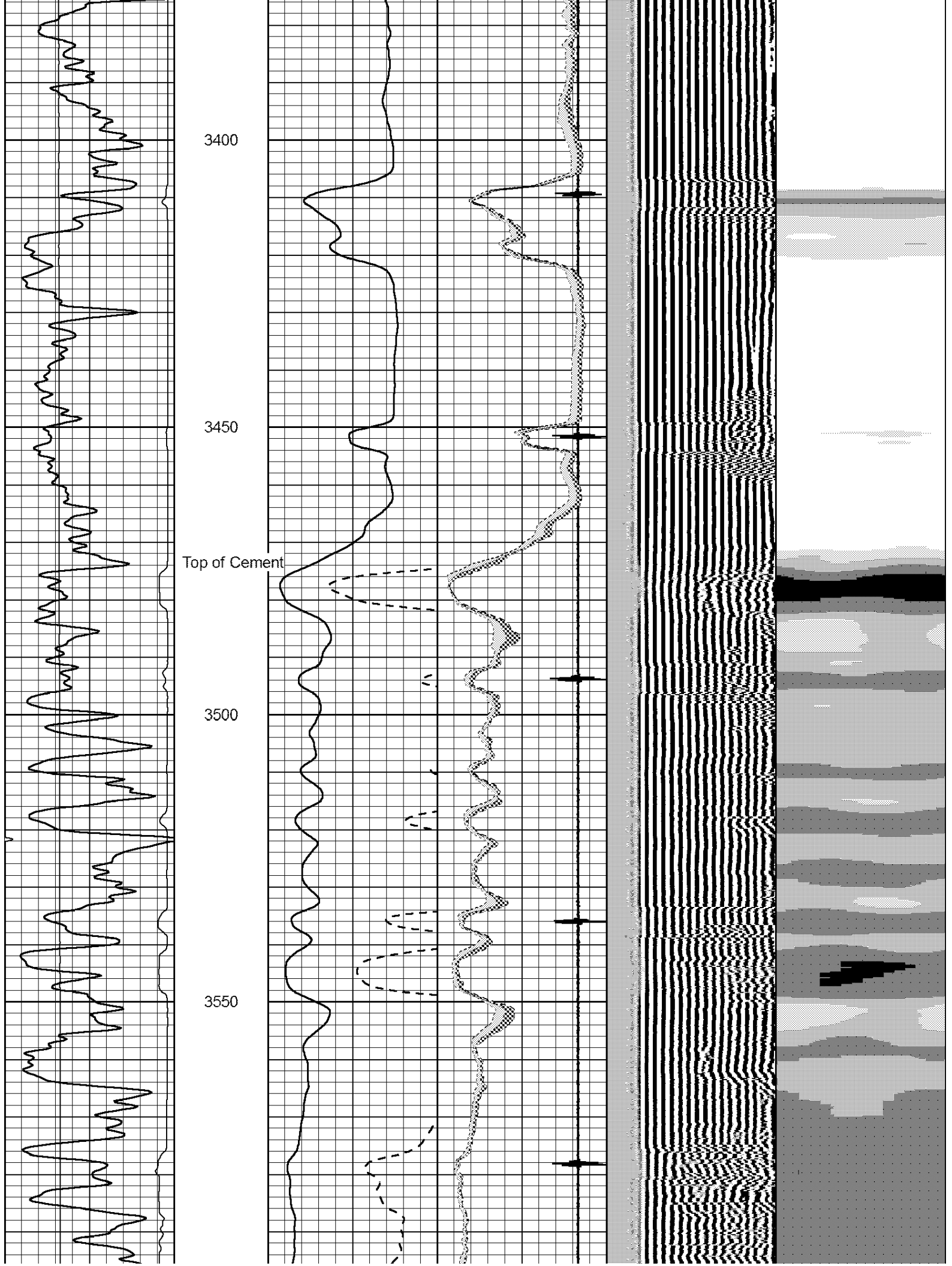


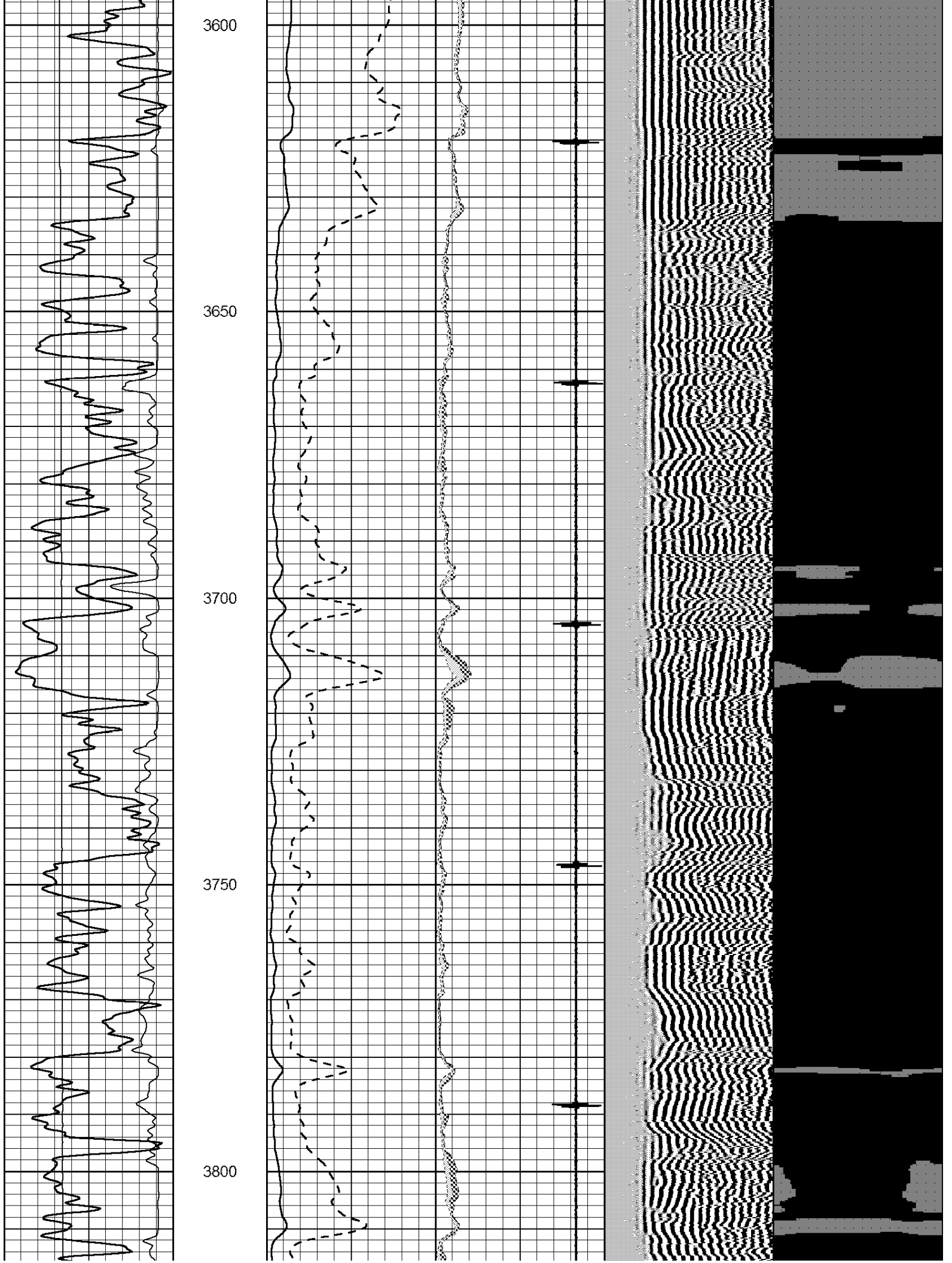
LOG-TECH

Main Pass

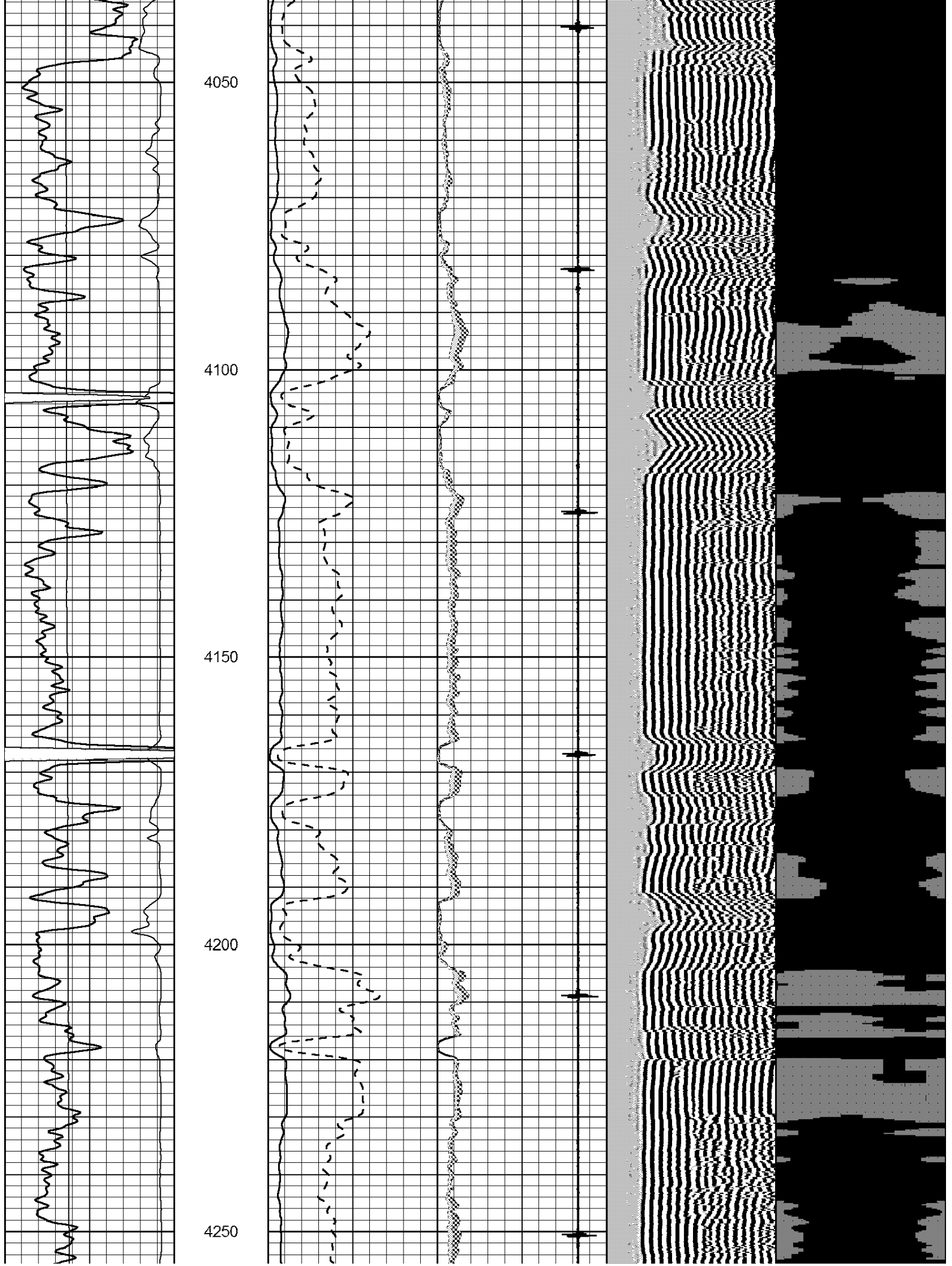
Database File: newgulf_a.db
 Dataset Pathname: sgrcbl/pass2.1
 Presentation Format: scbl02
 Dataset Creation: Tue Jun 05 10:53:22 2012 by Calc SCH 111116
 Charted by: Depth in Feet scaled 1:240

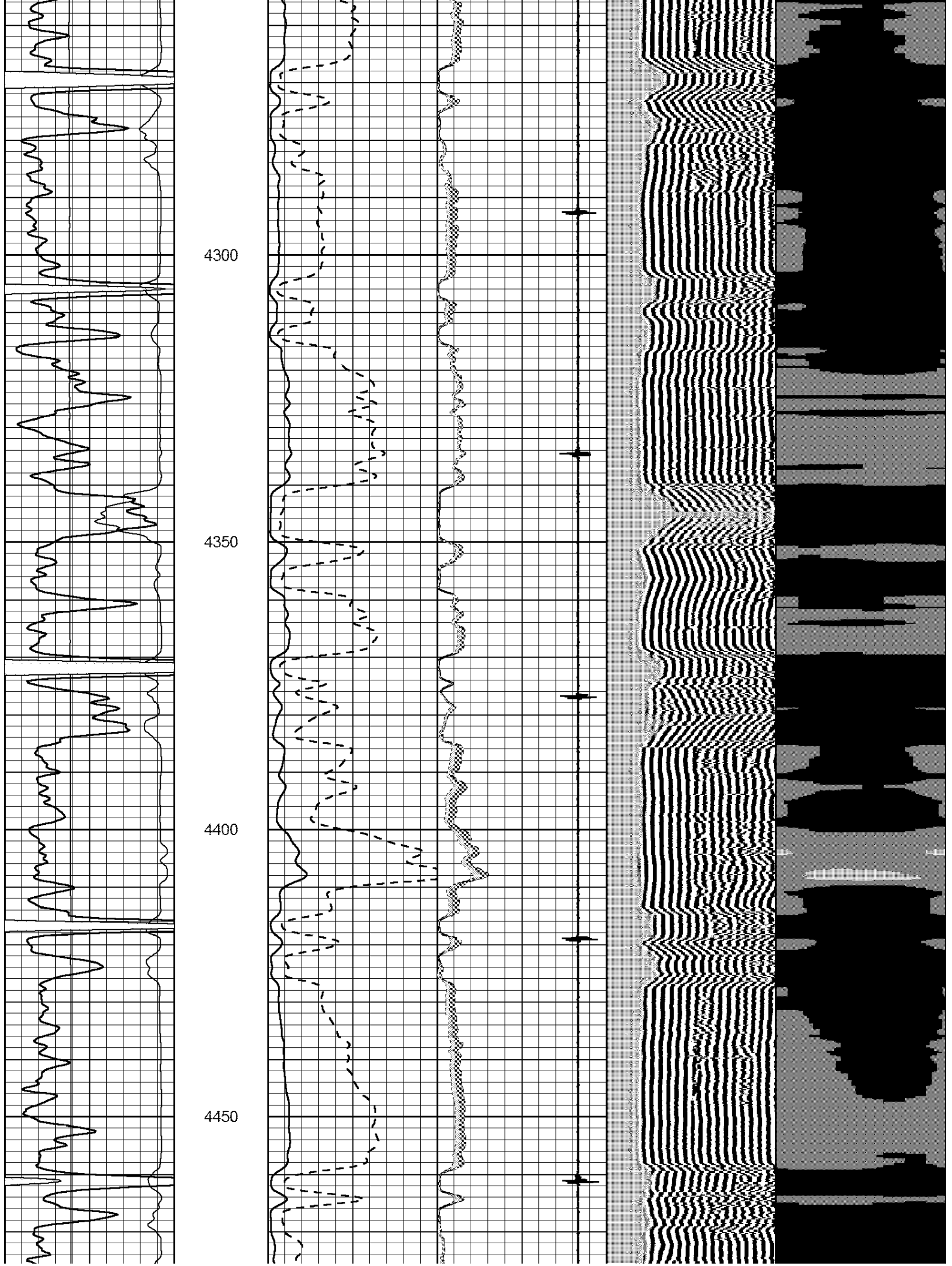


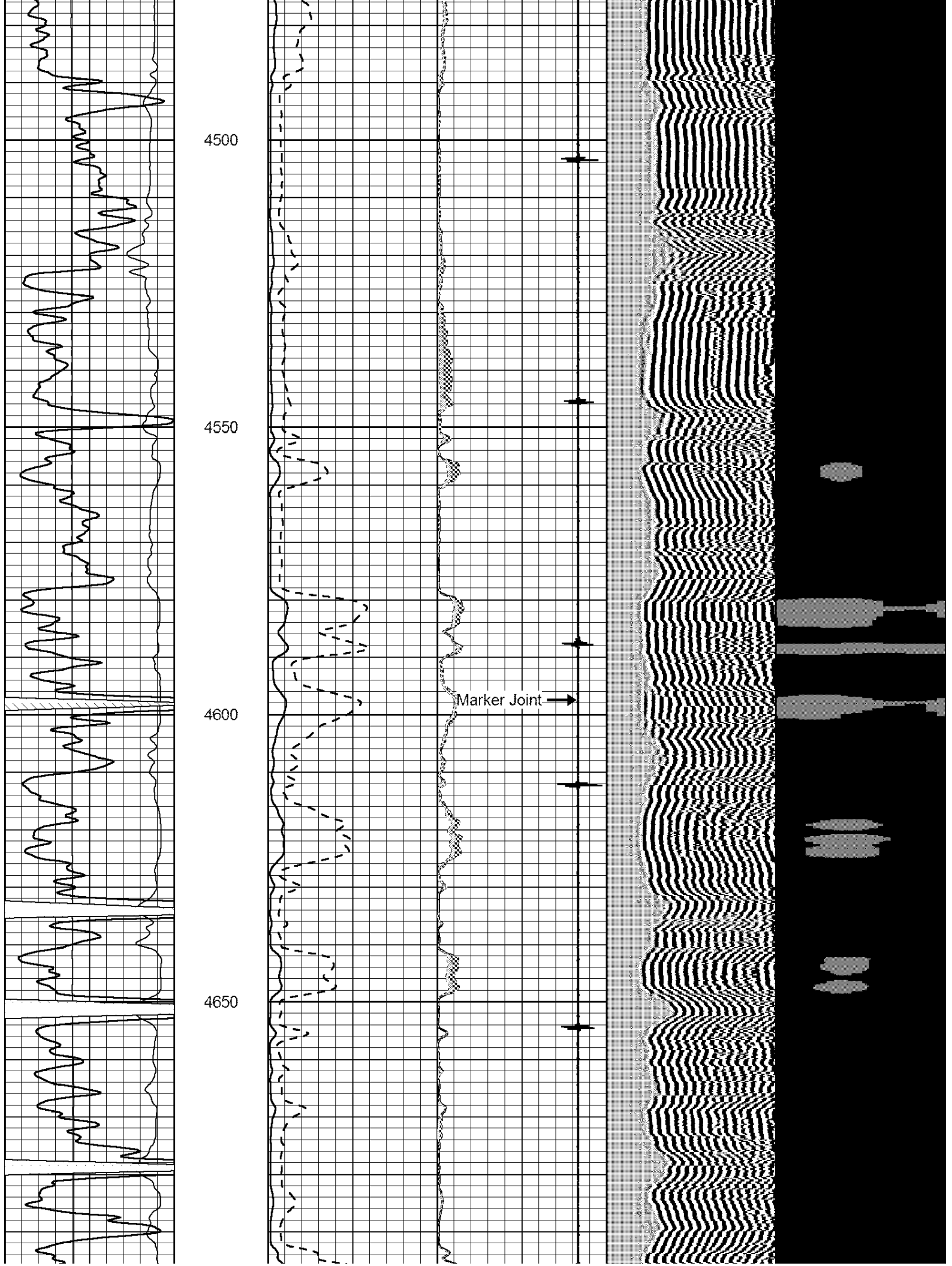




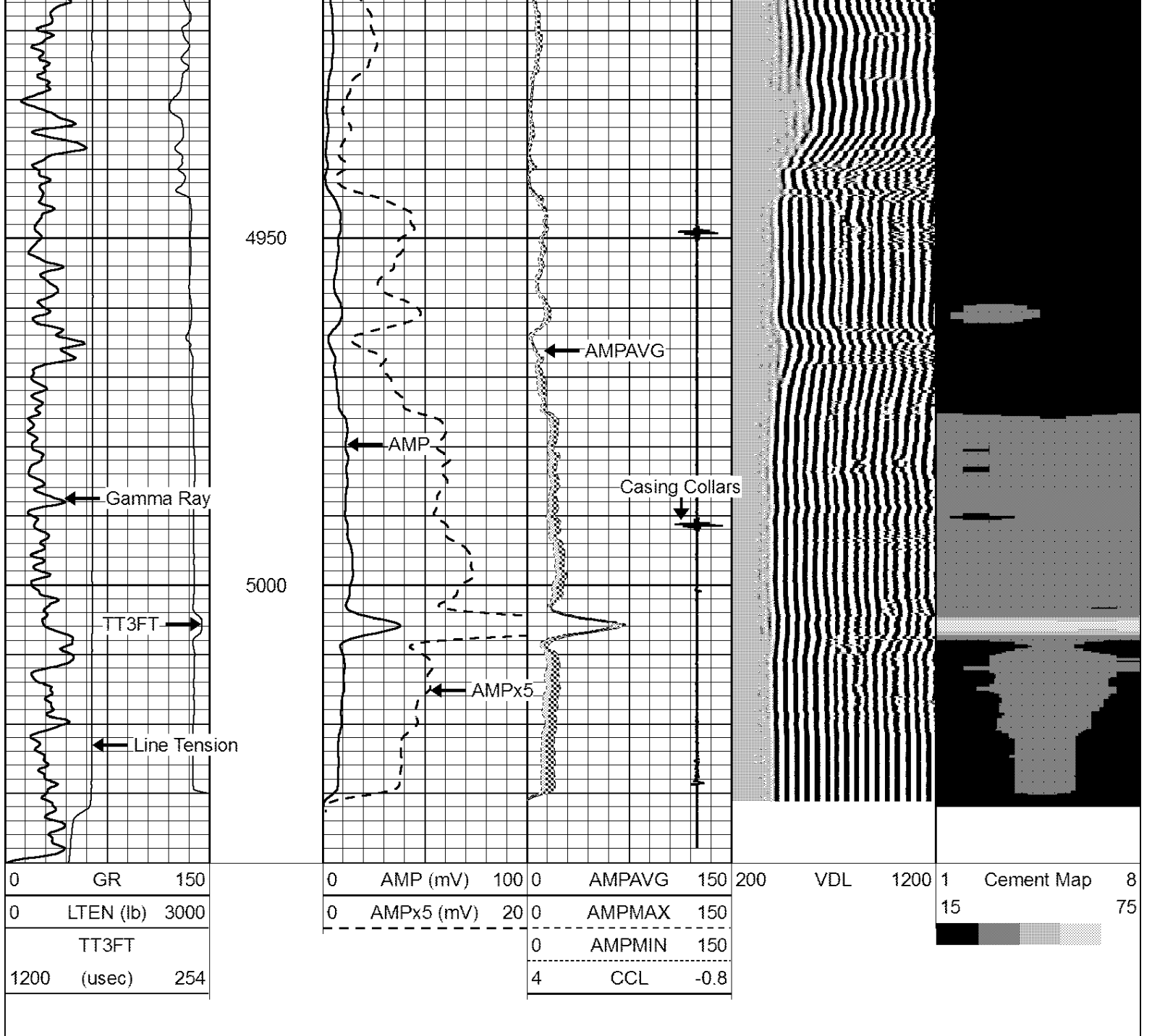






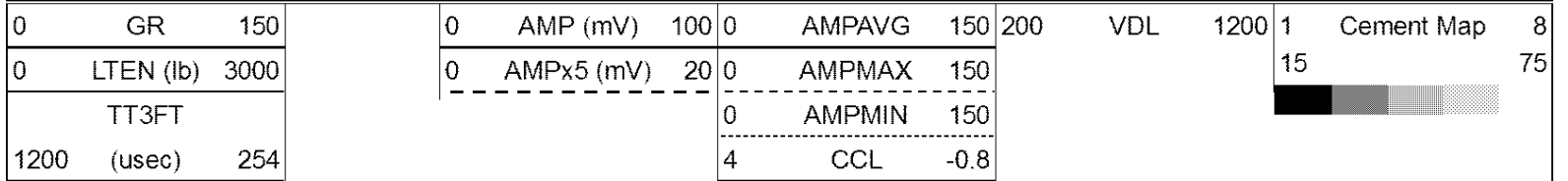


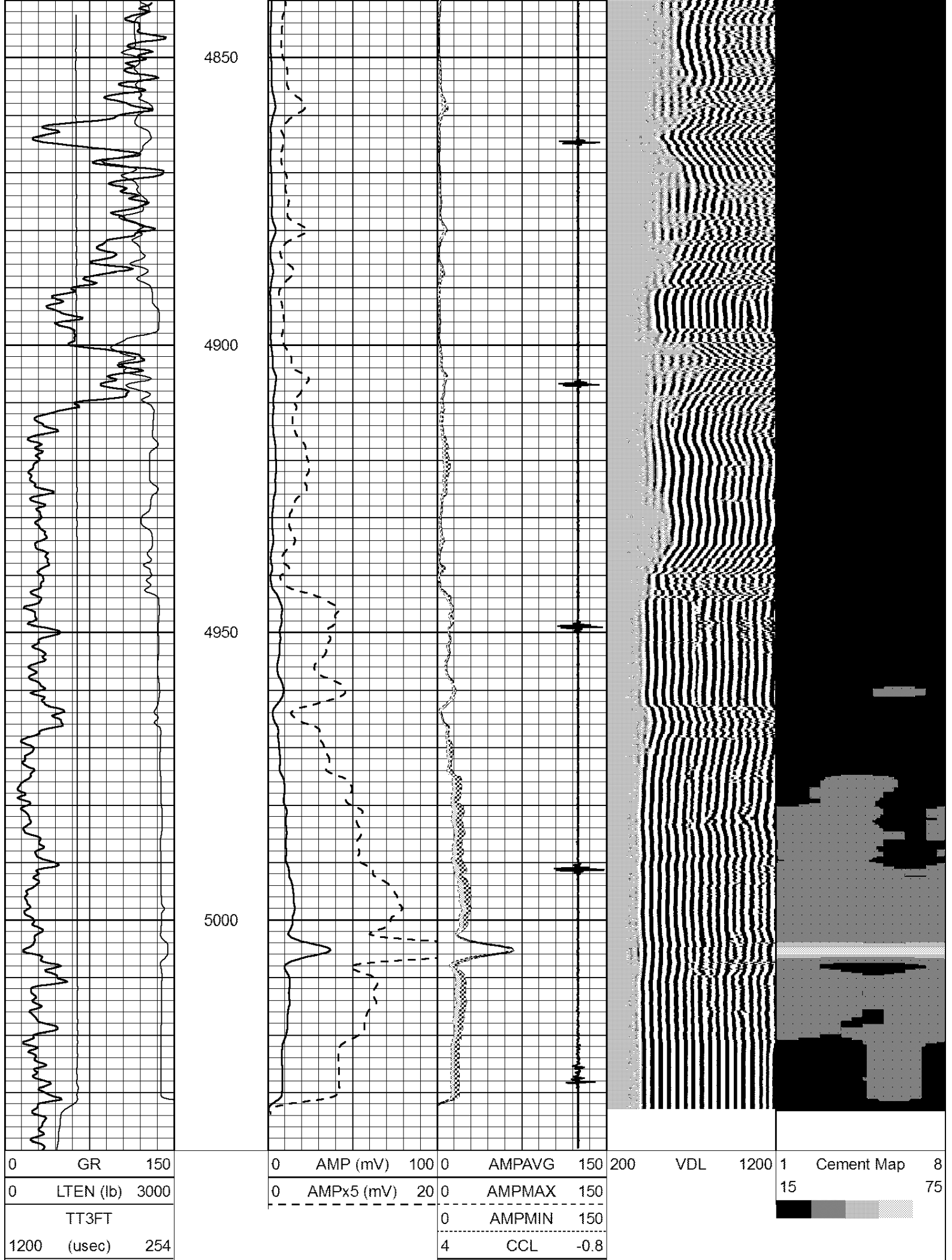




Repeat Section

Database File: newgulf_a.db
 Dataset Pathname: sgrcbl/pass1
 Presentation Format: scbl02
 Dataset Creation: Tue Jun 05 09:03:44 2012 by Log SCH 111116
 Charted by: Depth in Feet scaled 1:240





4850

4900

4950

5000

0	GR	150
0	LTEN (lb)	3000
TT3FT		
1200	(usec)	254

0	AMP (mV)	100	0	AMPAVG	150	
0	AMPx5 (mV)	20	0	AMPMAX	150	
-----		-----		0	AMPMIN	150
4	CCL			-0.8		

200	VDL	1200	1	Cement Map	8
		15		75	

