



Sonic Cement  
Bond Log

Ph. (785) 625-3858

15-051-26,259-00-00

Company Klabzuba Oil & Gas Inc.

Well North Trust No. 3-10-15-20

Field

County Ellis

State Kansas

Location SE SW NW SE

1430' FSL & 2170' FEL

Other Services  
Perforate

Sec: 3 Twp: 15 S Rge: 20 W

Permanent Datum Ground Level Elevation 2040  
Log Measured From Kelly Bushing 8 Ft. Above Perm. Datum  
Drilling Measured From Kelly Bushing

Elevation  
K.B. 2048  
D.F.  
G.L. 2040

Run Number	One		
Date Survey	05/24/2012		
Date Cementing	02/21/2012		
Type Cementing Operation	Primary		
Depth Driller	3883		
Depth Logger	3776		
Logged Interval	3775 to 2700	2200 to 200	
Casing Driller	5.5 @ TD	@	
Float Collar -- D.V. Tool	////	2030	
Squeeze Depth	////		
Amount & Type Cement	////		
Amount & Type Admix	////		
Type Fluid In Hole	Water		
Fluid Level	206		
Salinity PPM CL	////		
Weight lb/gal -- Vis.	////	////	
Approx. Logged Cement Top	2894		
Calculated Cement Top	////		
Max. Hole Temperature	117		
Tool No.	PRBT71		
Spacing Recorded	3' 5"		
Equipment -- Location	71 Hays		
Recorded By	Scott Clermont		
Witnessed By	Dean Wallace		

<<< Fold Here >>>

All interpretations are opinions based on inferences from electrical or other measurements and we cannot and do not guarantee the accuracy or correctness of any interpretation, and we shall not, except in the case of gross or willful negligence on our part, be liable or responsible for any loss, costs, damages, or expenses incurred or sustained by anyone resulting from any interpretation made by any of our officers, agents or employees. These interpretations are also subject to our general terms and conditions set out in our current Price Schedule.

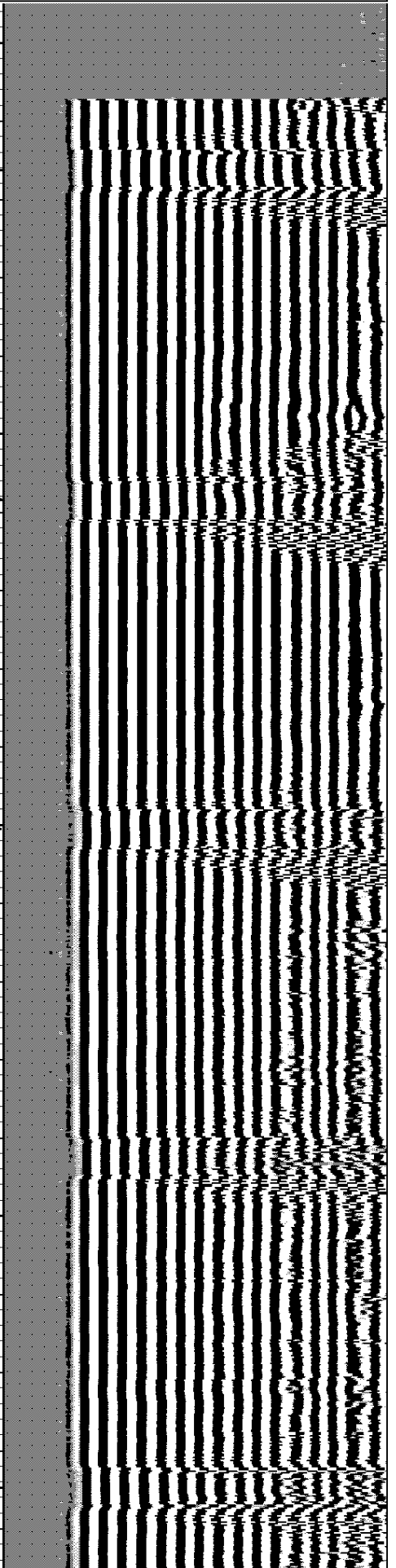
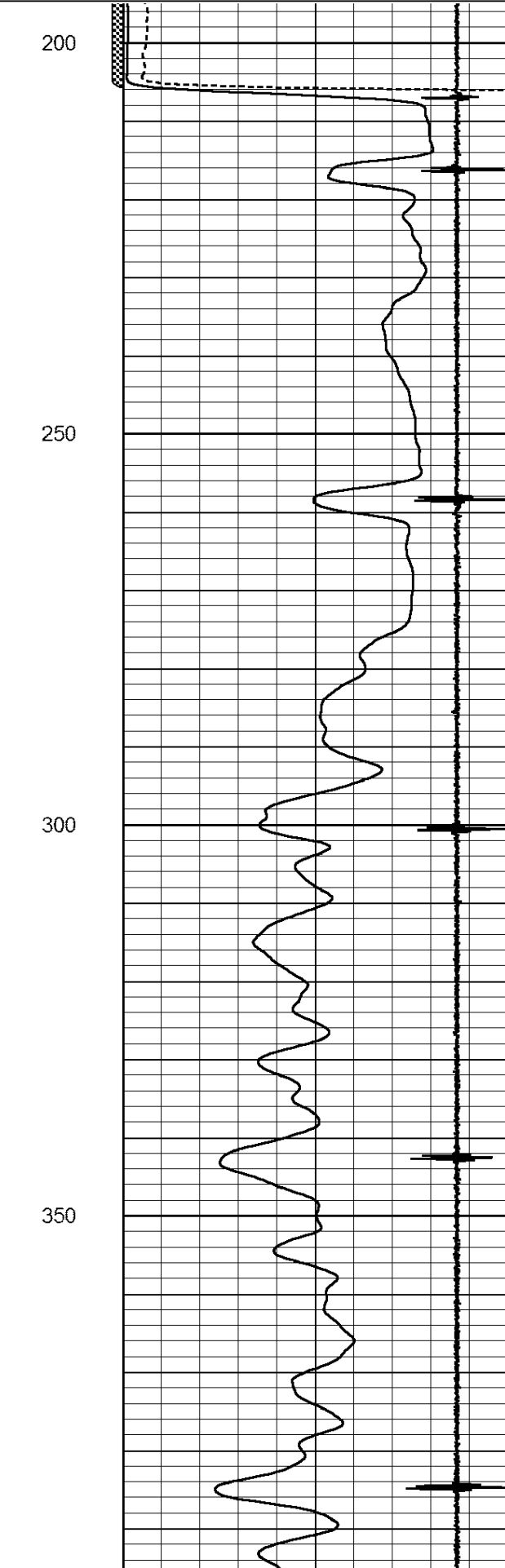
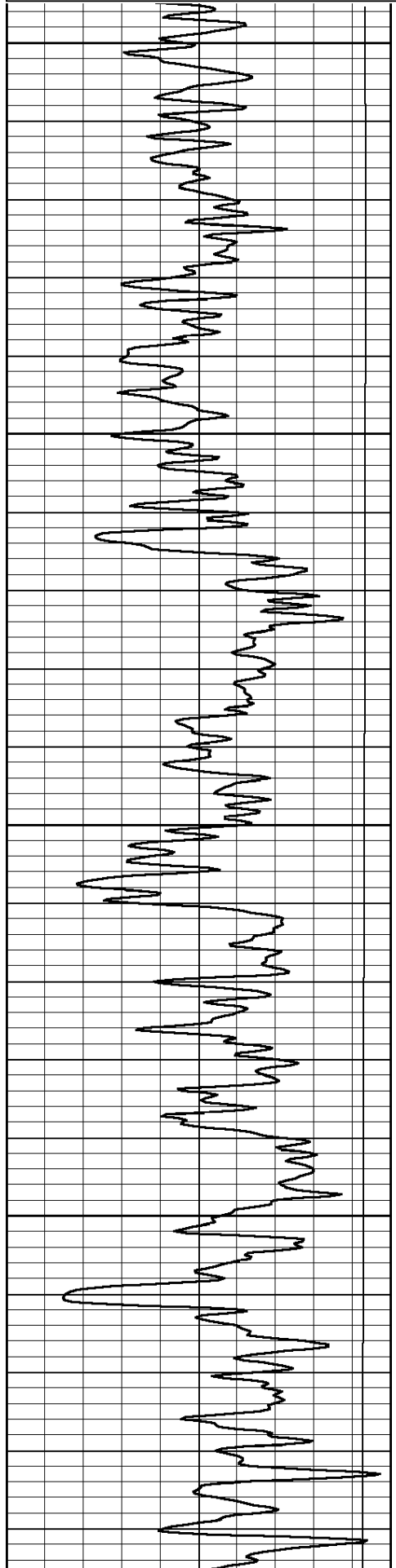
Comments

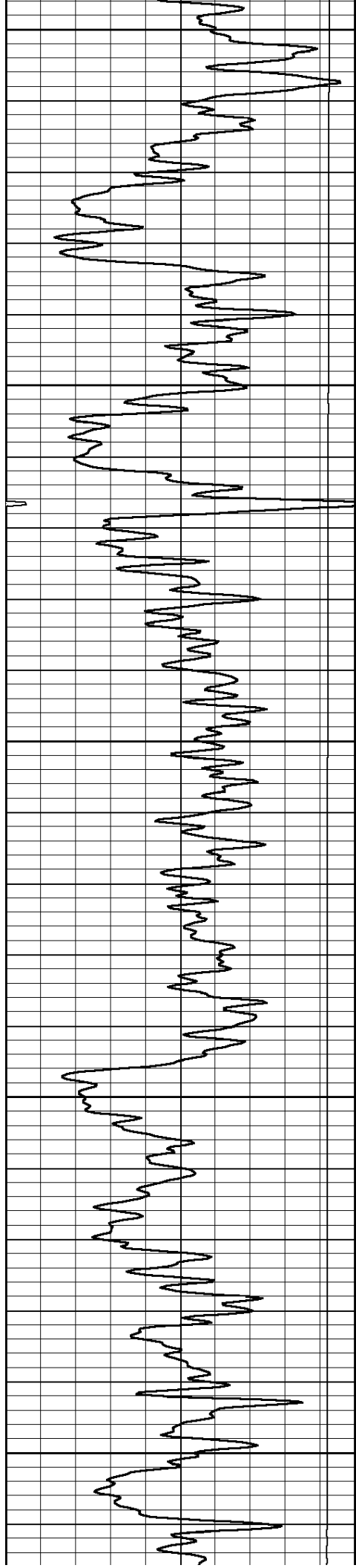
Thank you for using Log-Tech  
(785) 625-3858

Antonino Ks, West to 130th Rd, 1/2 South, East and South Into

Database File: klabzuba\_northtrust#3-10-15-20.db  
 Dataset Pathname: grcbl/pass4  
 Presentation Format: cblbr  
 Dataset Creation: Thu May 24 13:36:37 2012 by Log SCH 111116  
 Charted by: Depth in Feet scaled 1:240

0	Gamma Ray	150	amp3ft	4	Casing Collars	-0.6	200	wvf5ft	1200
			(mV)	0	Amplified Amplitude (mV)	100			
			-100	10	Pipe Amplitude (mV)	20			





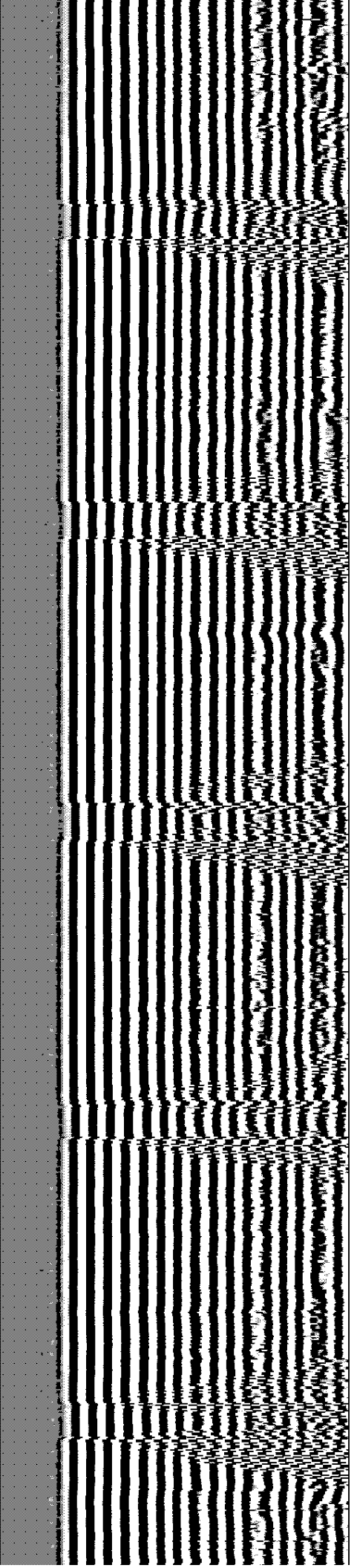
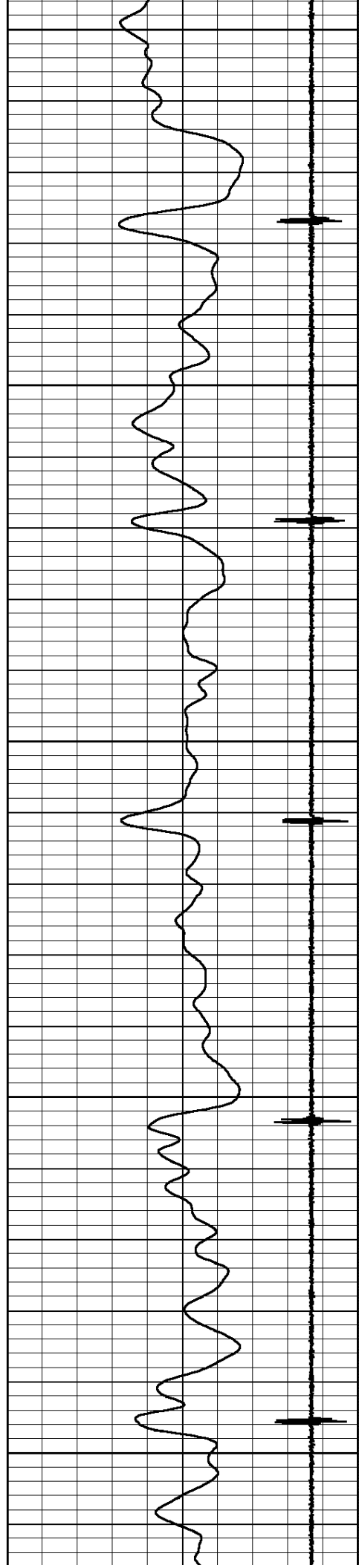
400

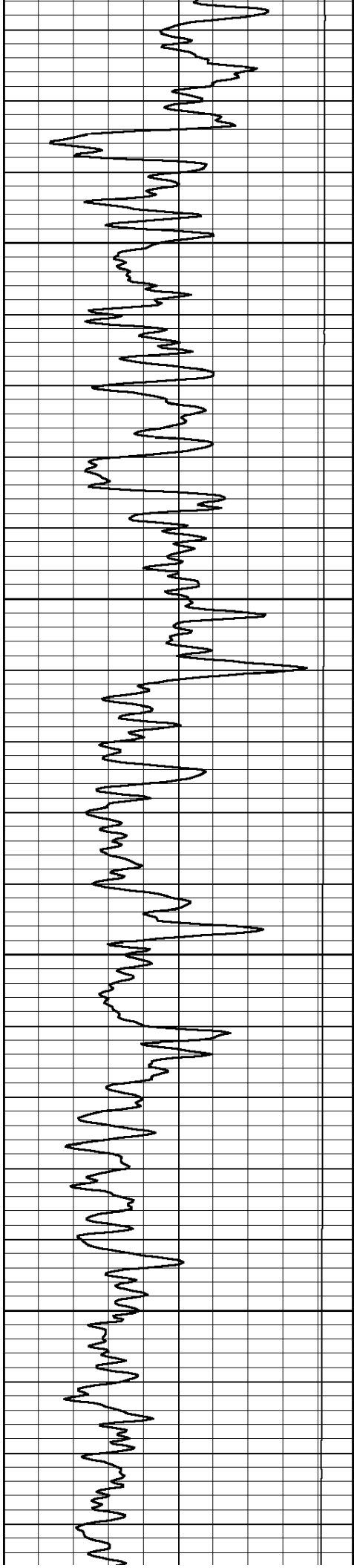
450

500

550

600



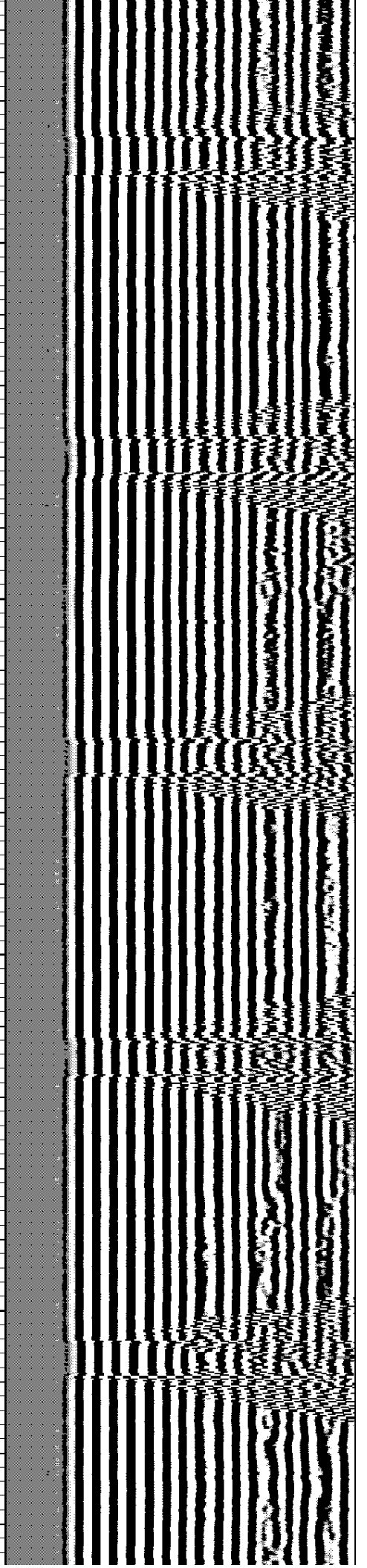
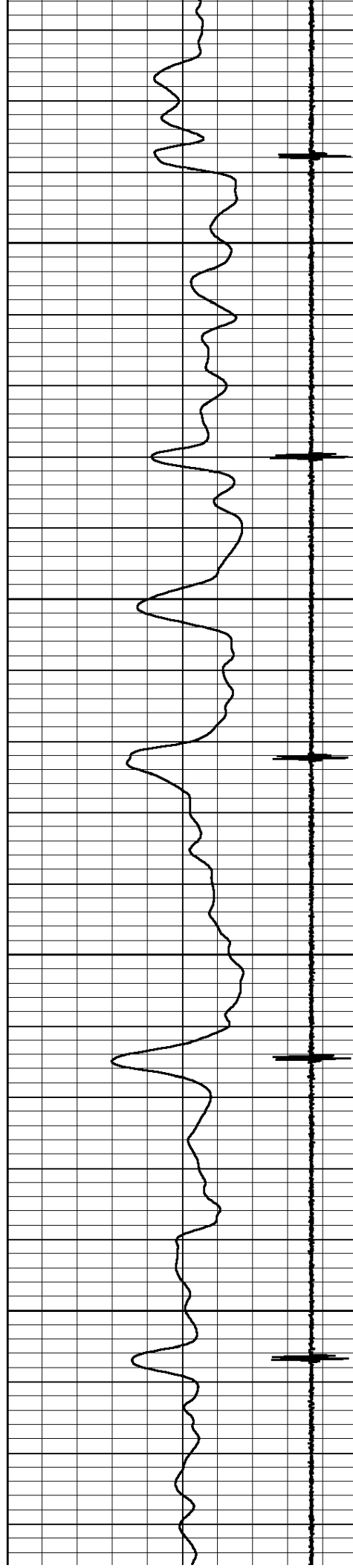


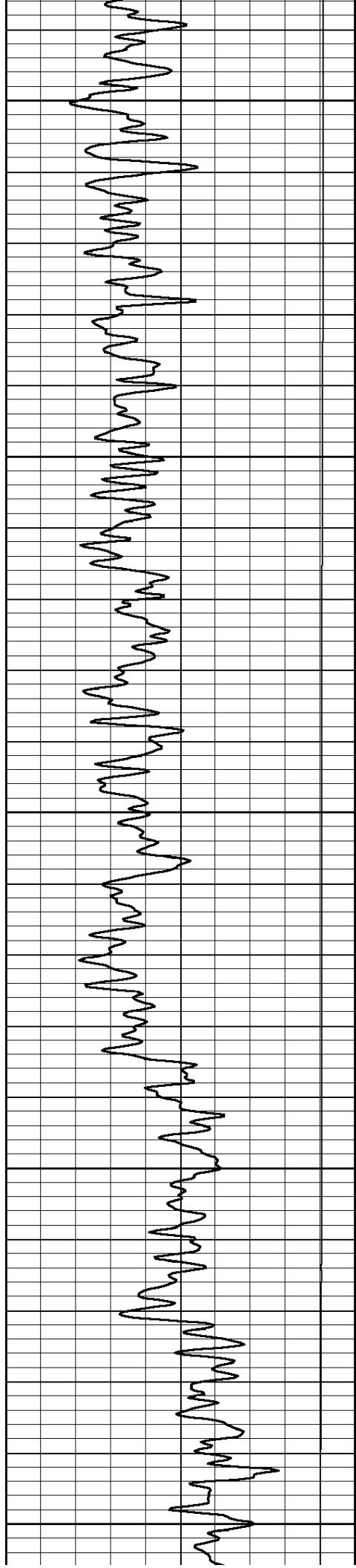
650

700

750

800





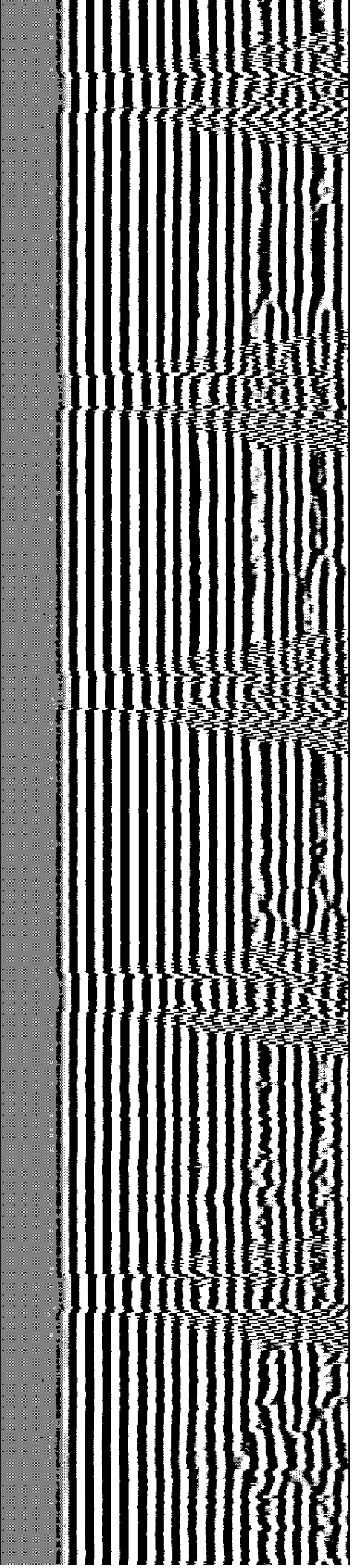
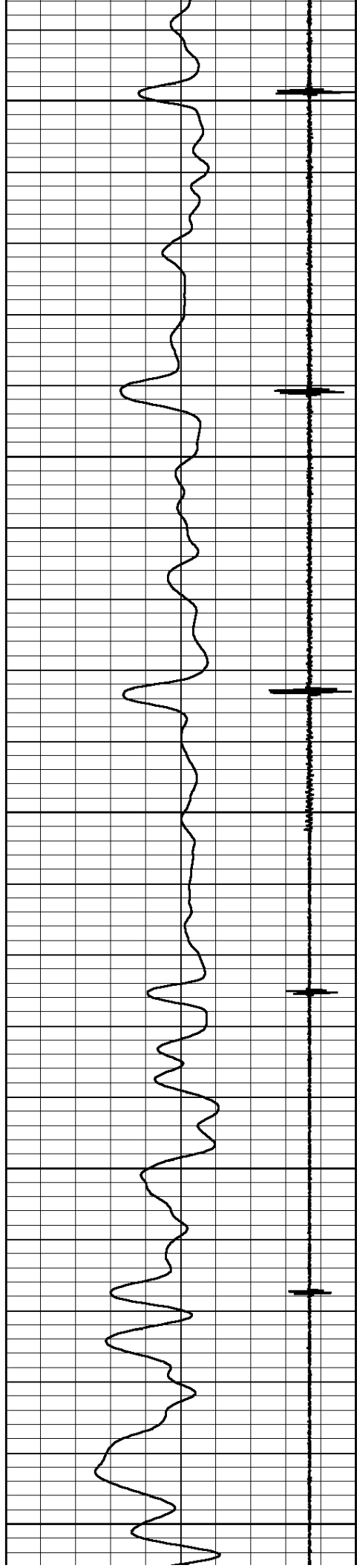
850

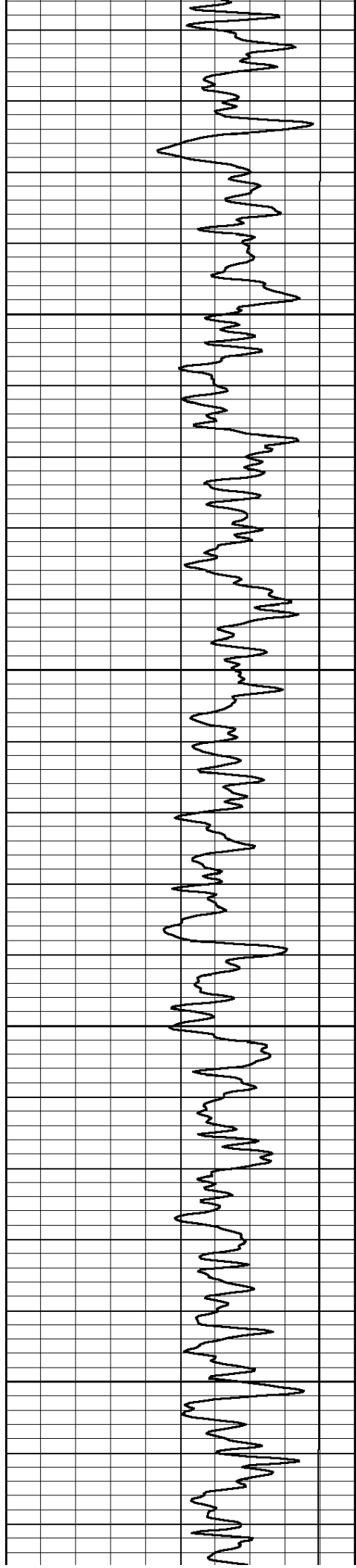
900

950

1000

1050



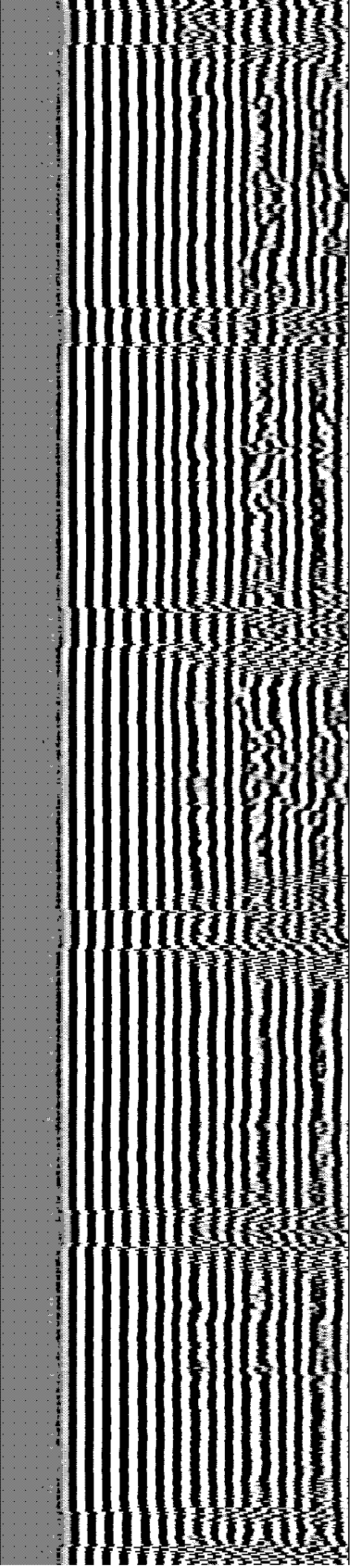
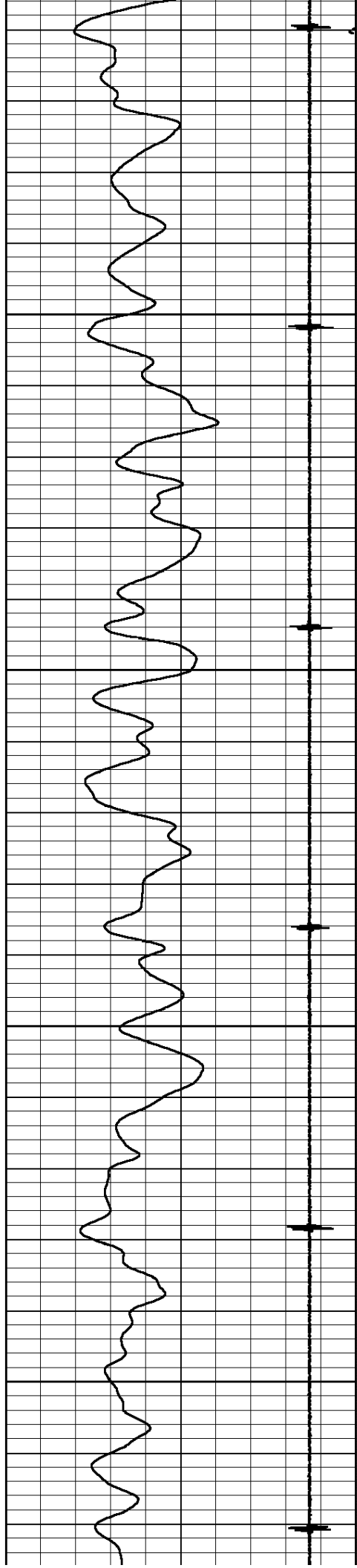


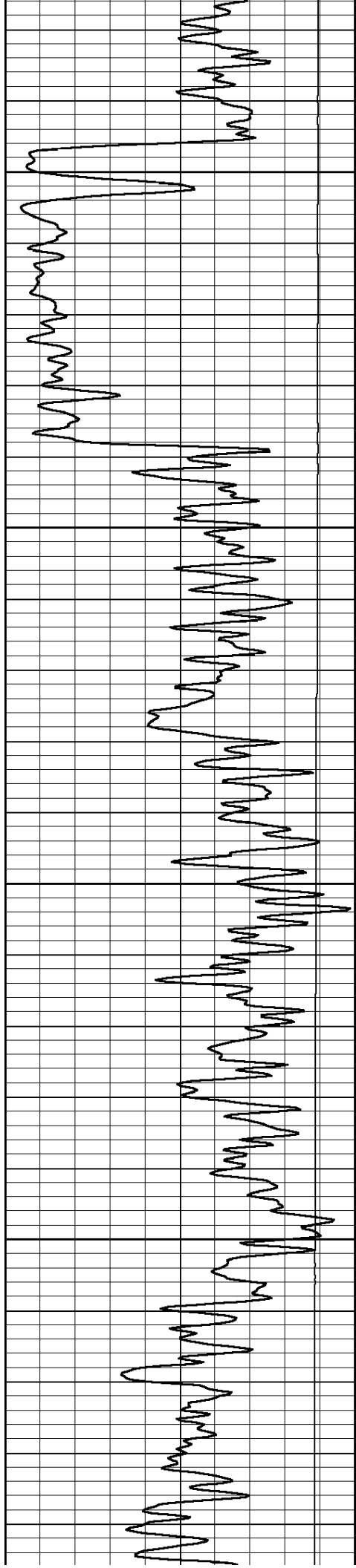
1100

1150

1200

1250



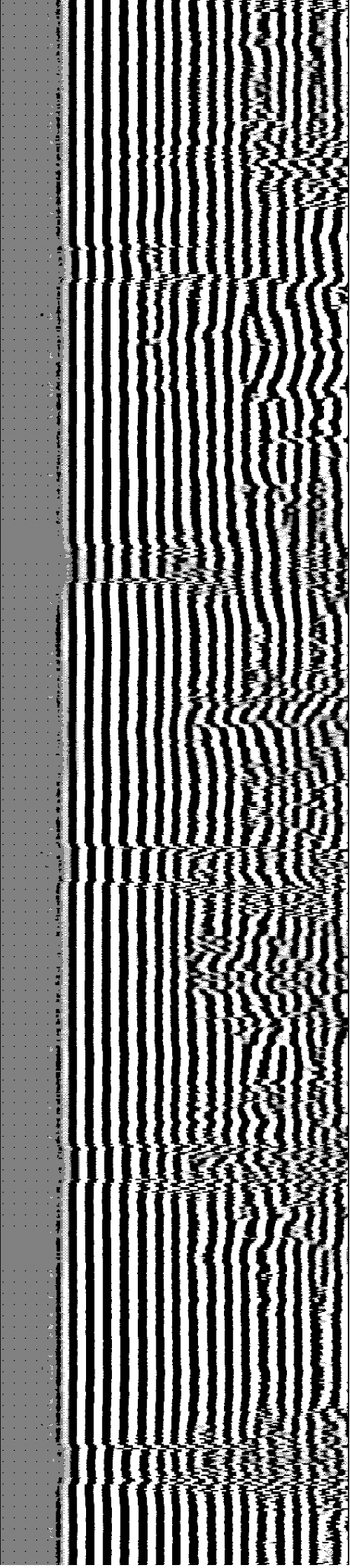
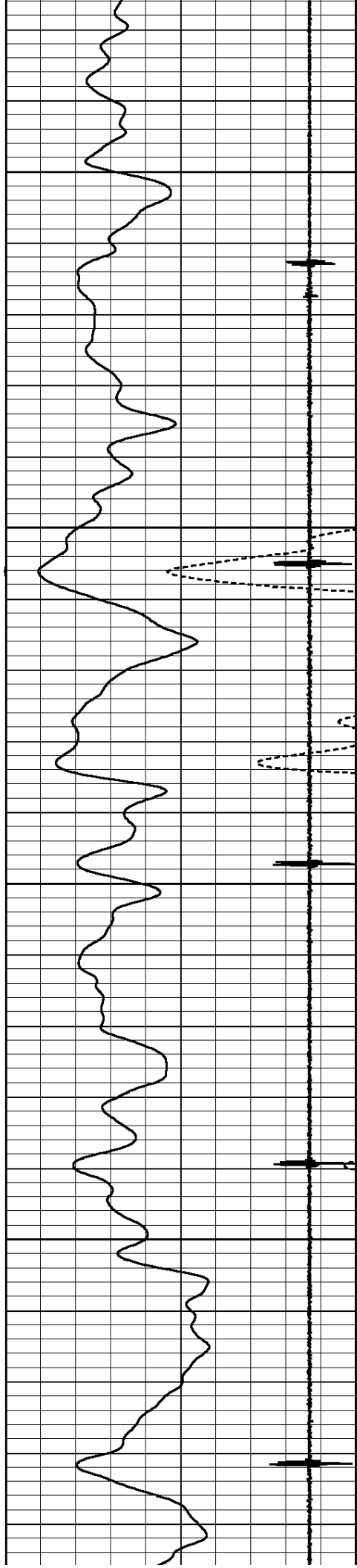


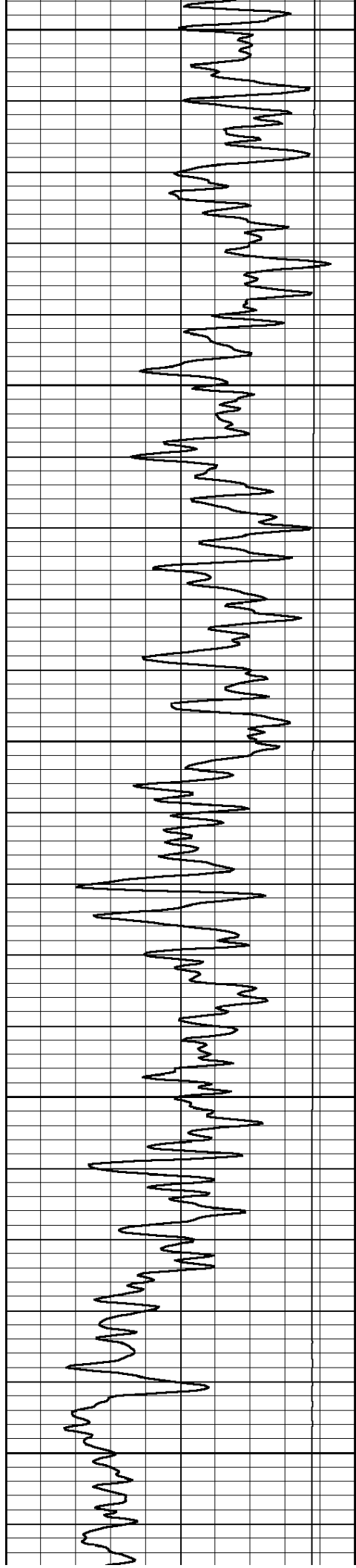
1300

1350

1400

1450





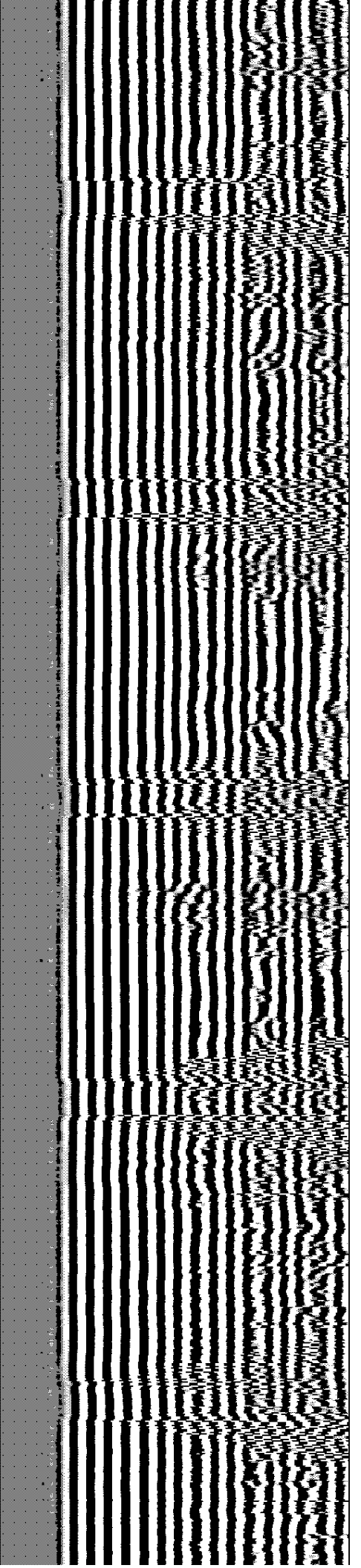
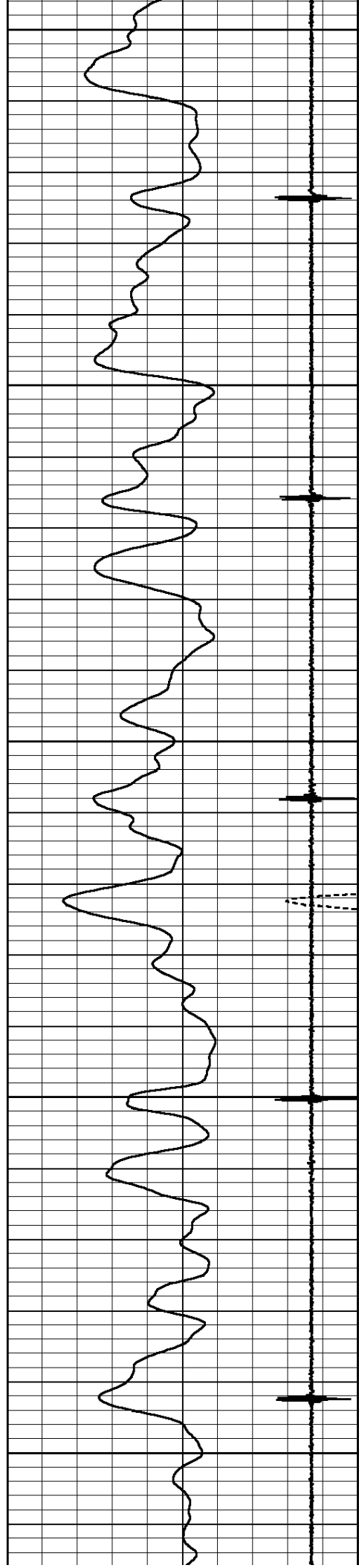
1500

1550

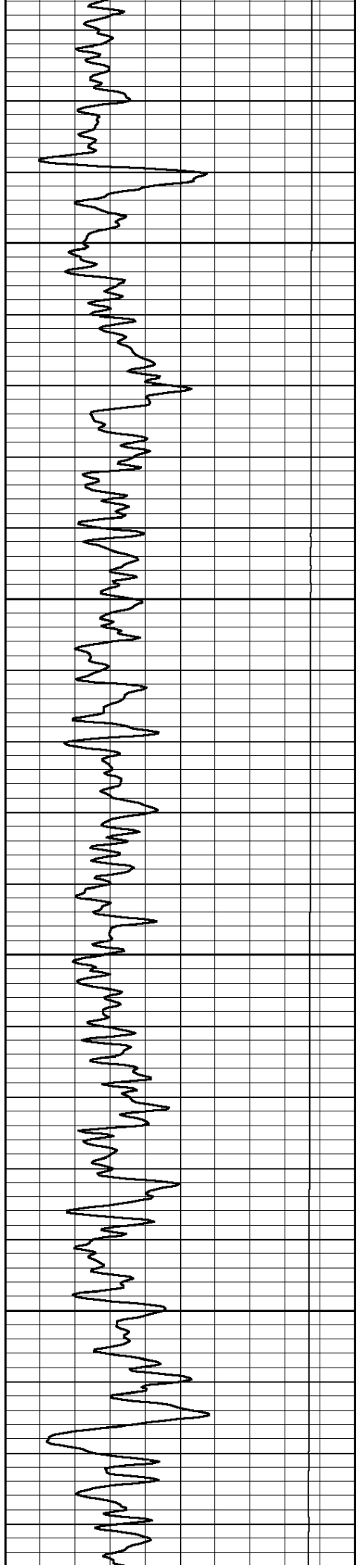
1600

1650

1700





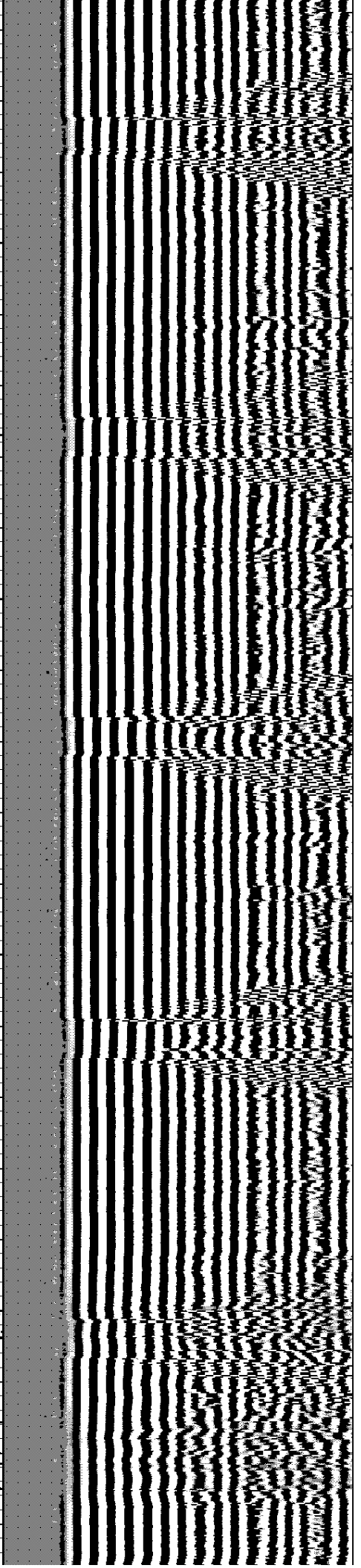
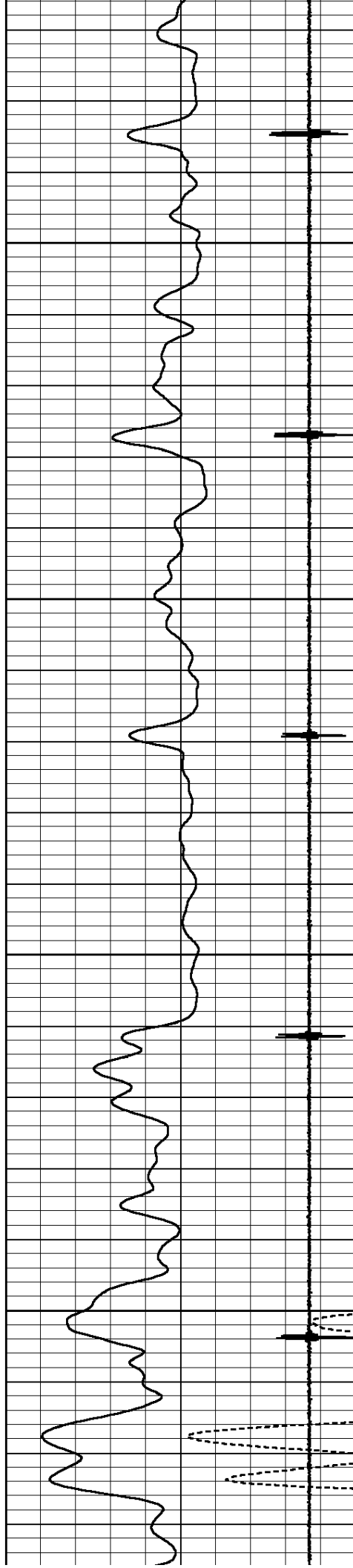


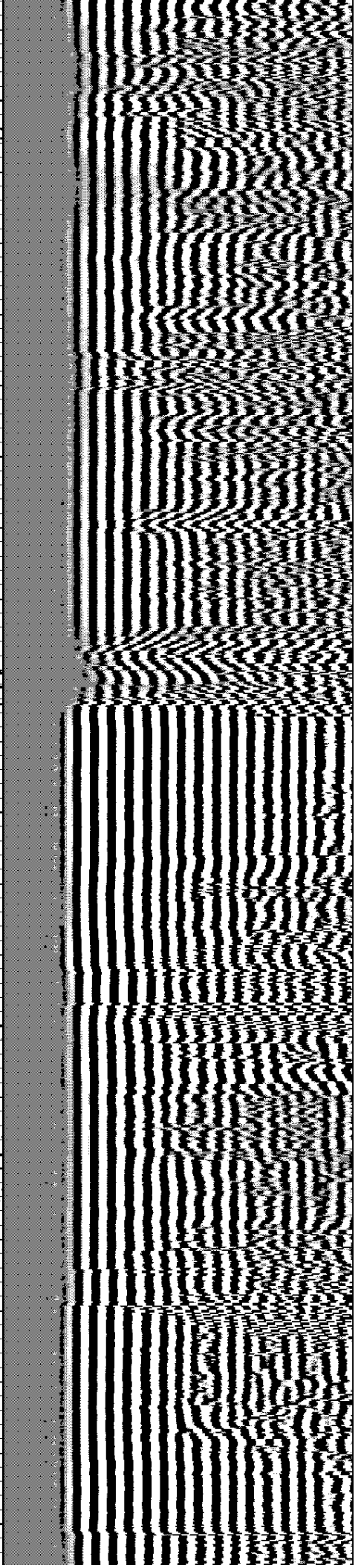
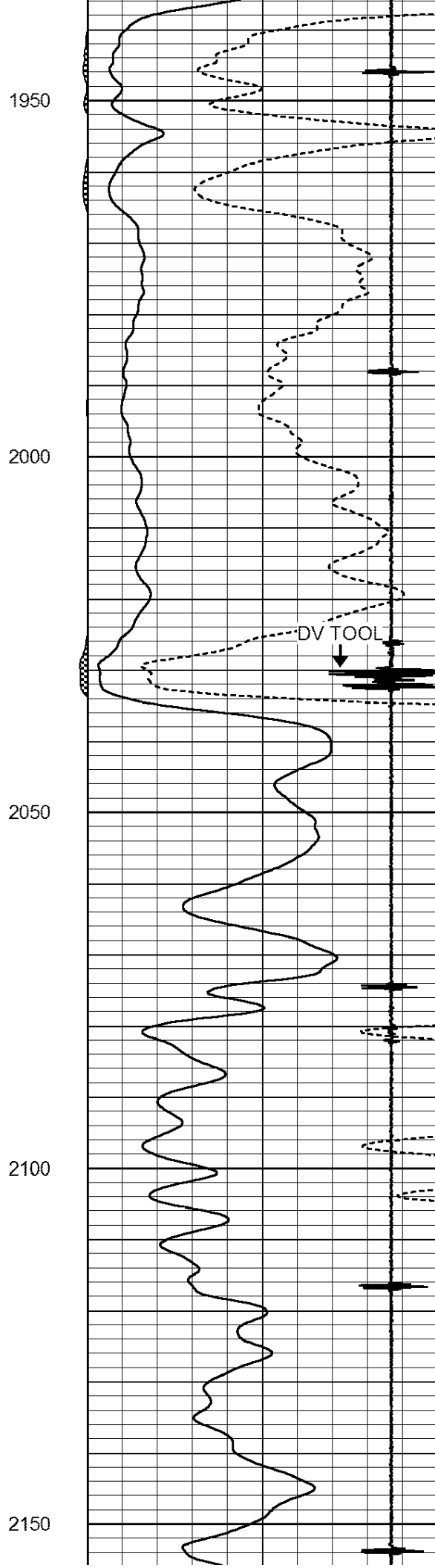
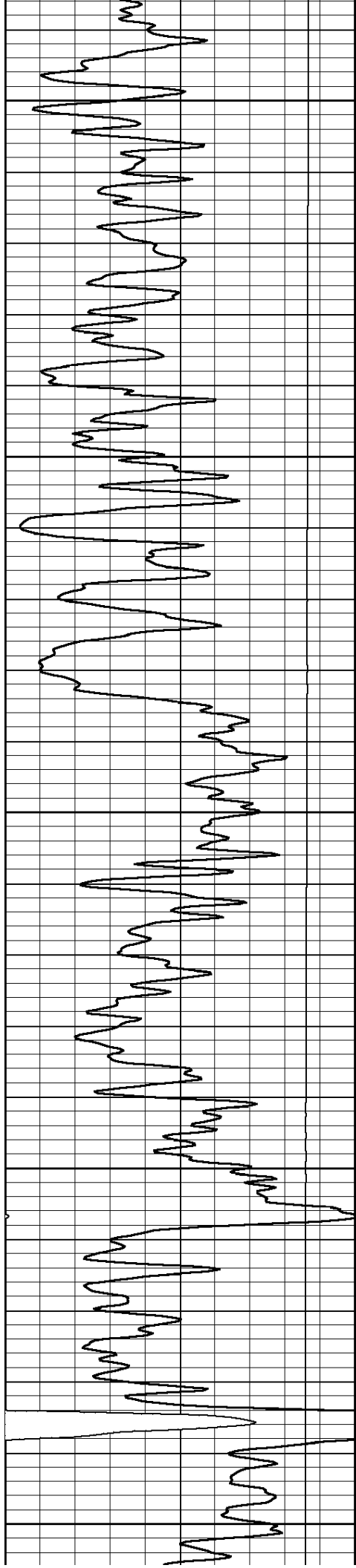
1750

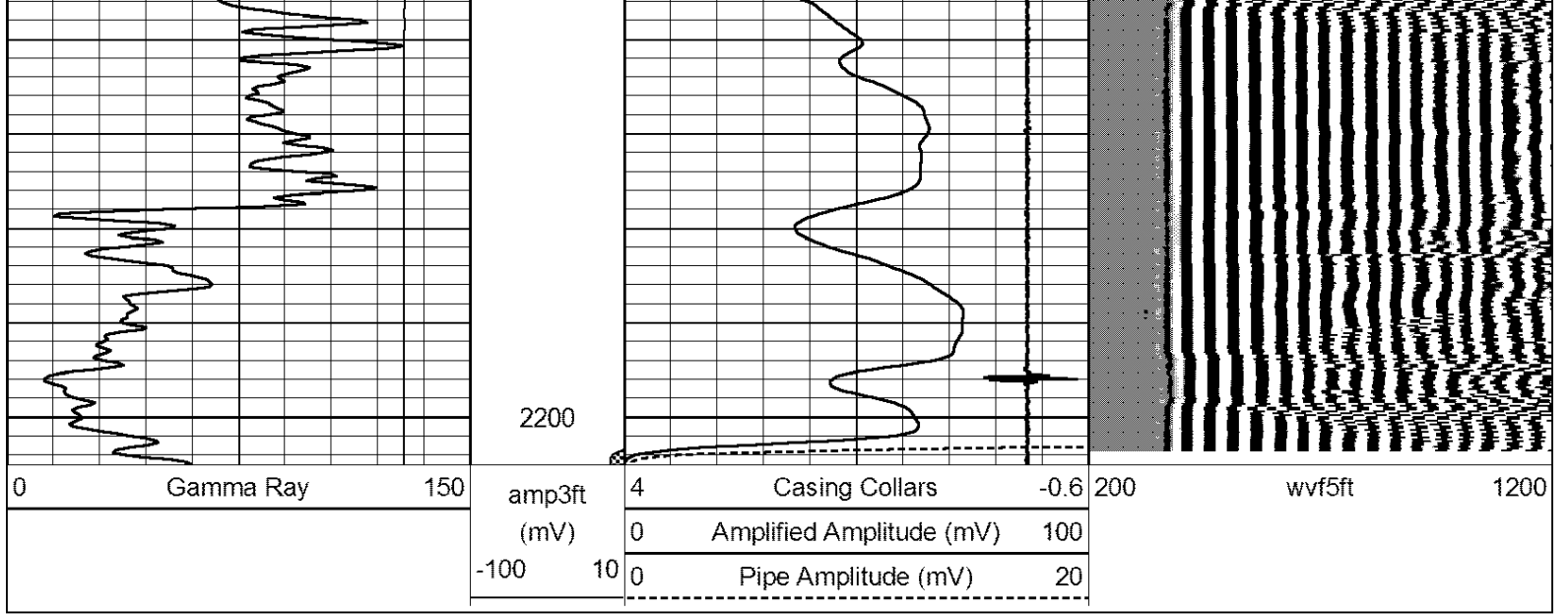
1800

1850

1900

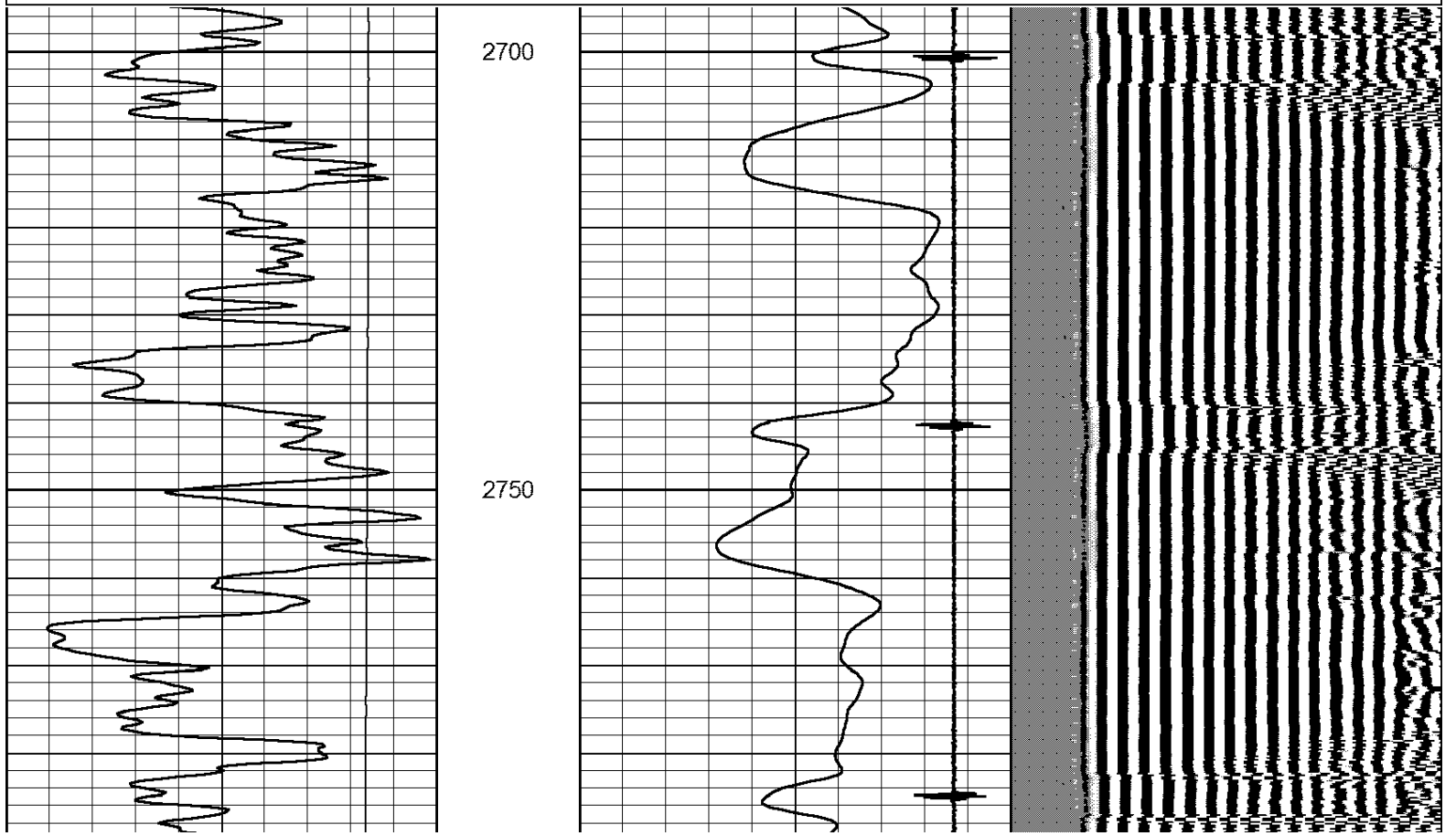
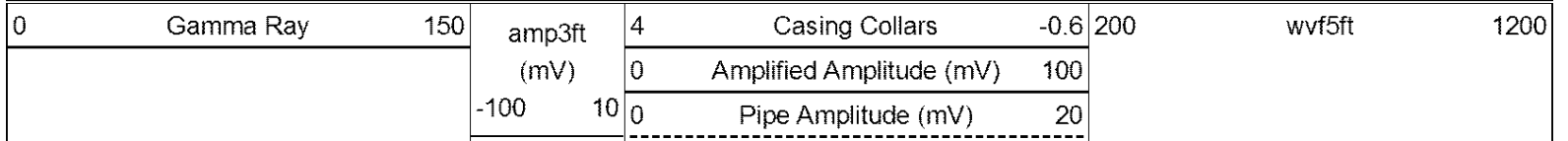


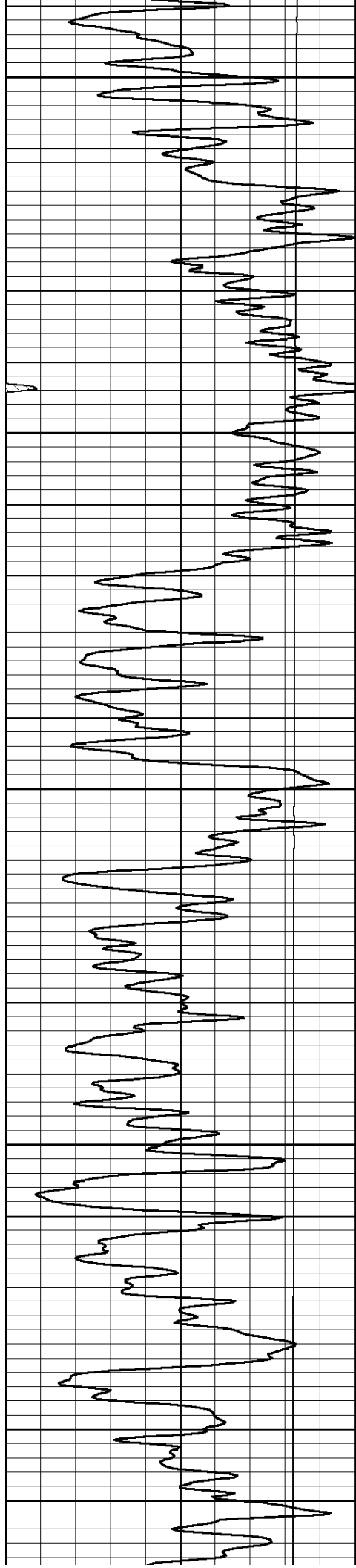




# Main Pass

Database File: klabzuba\_northtrust#3-10-15-20.db  
 Dataset Pathname: grcbl/pass3  
 Presentation Format: cbldr  
 Dataset Creation: Thu May 24 13:12:58 2012 by Log SCH 111116  
 Charted by: Depth in Feet scaled 1:240





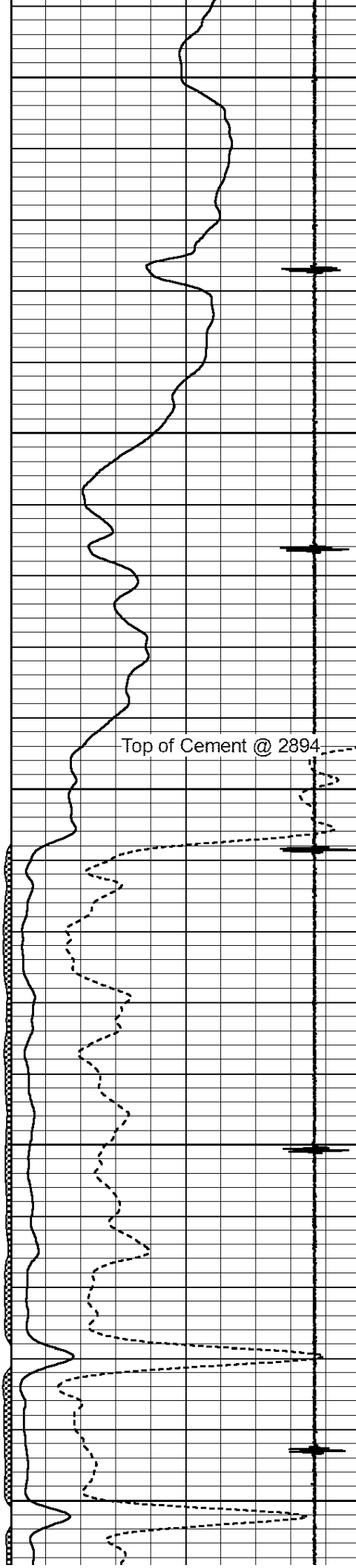
2800

2850

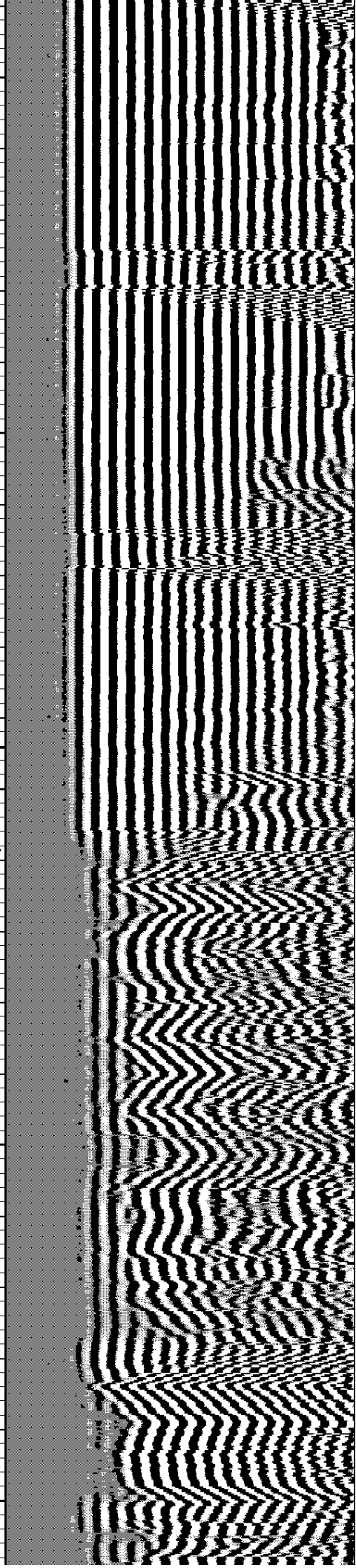
2900

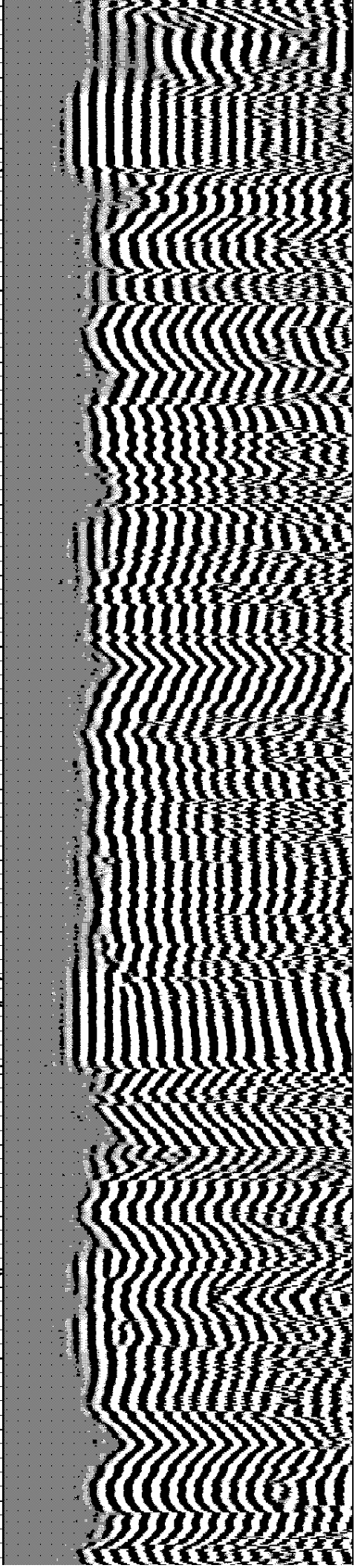
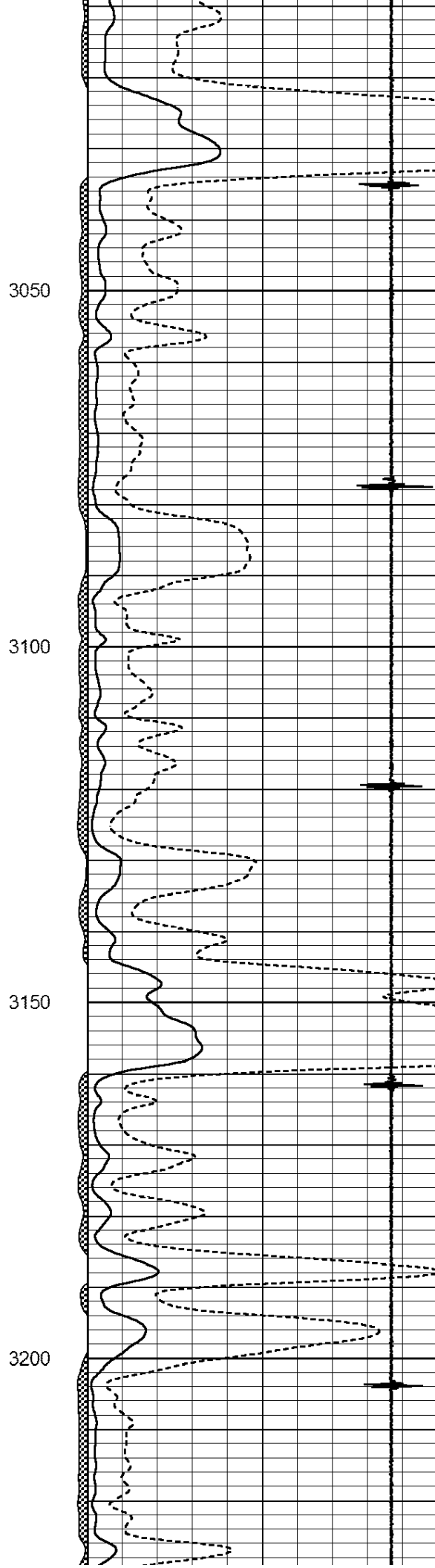
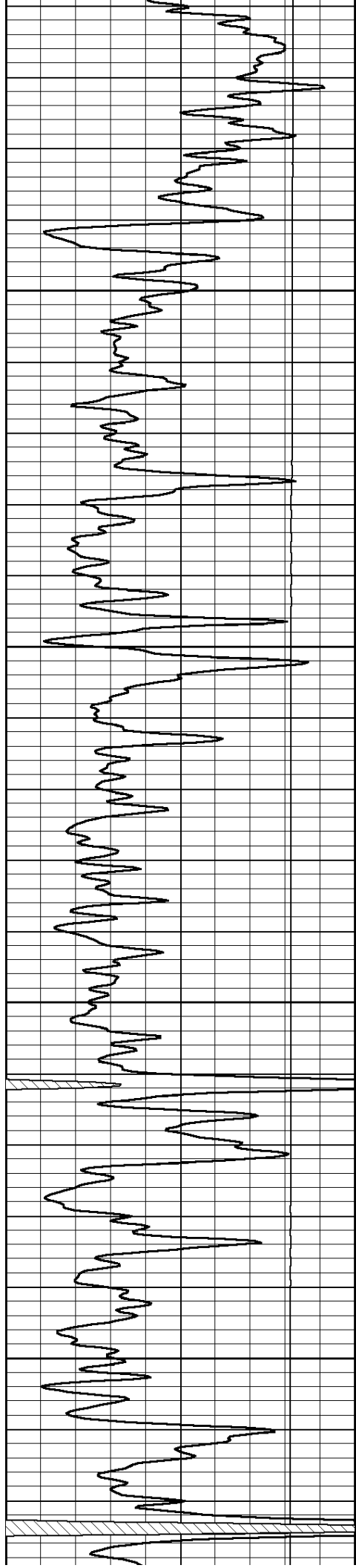
2950

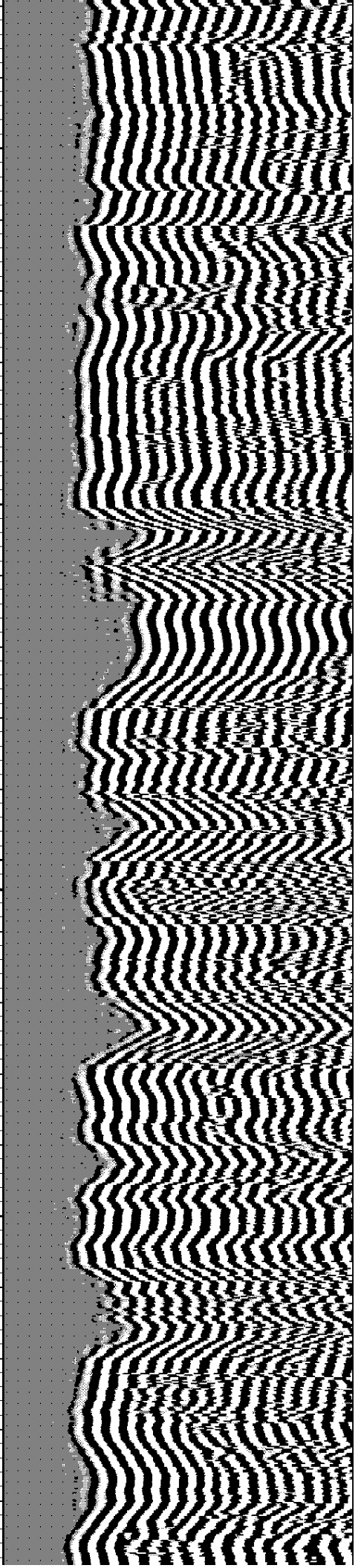
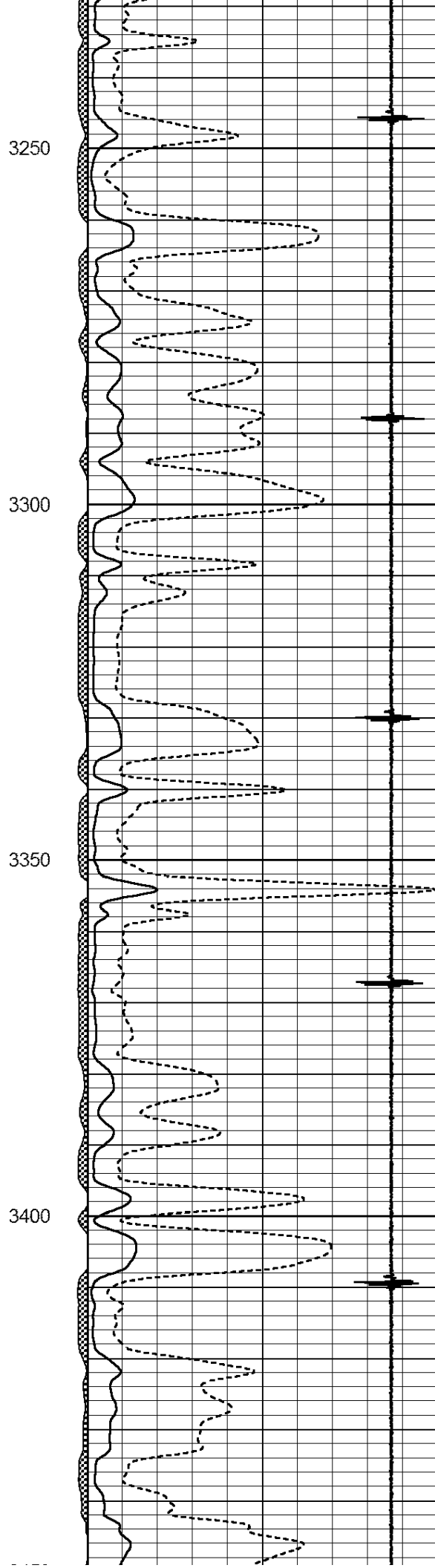
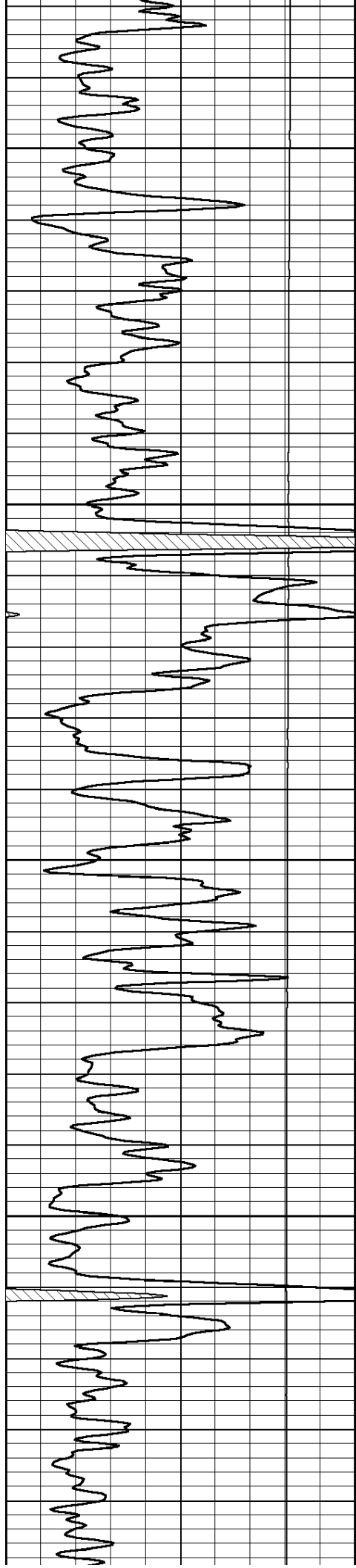
3000

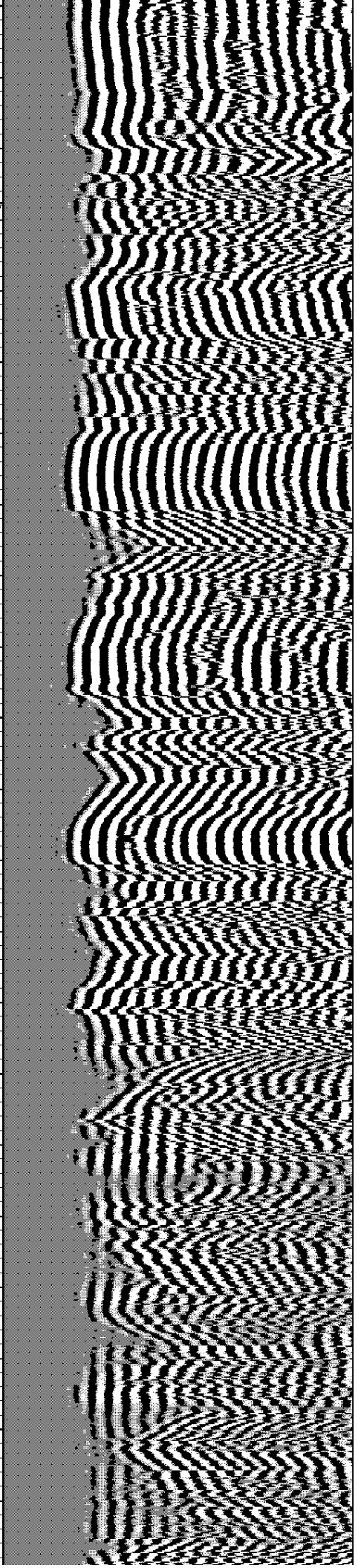
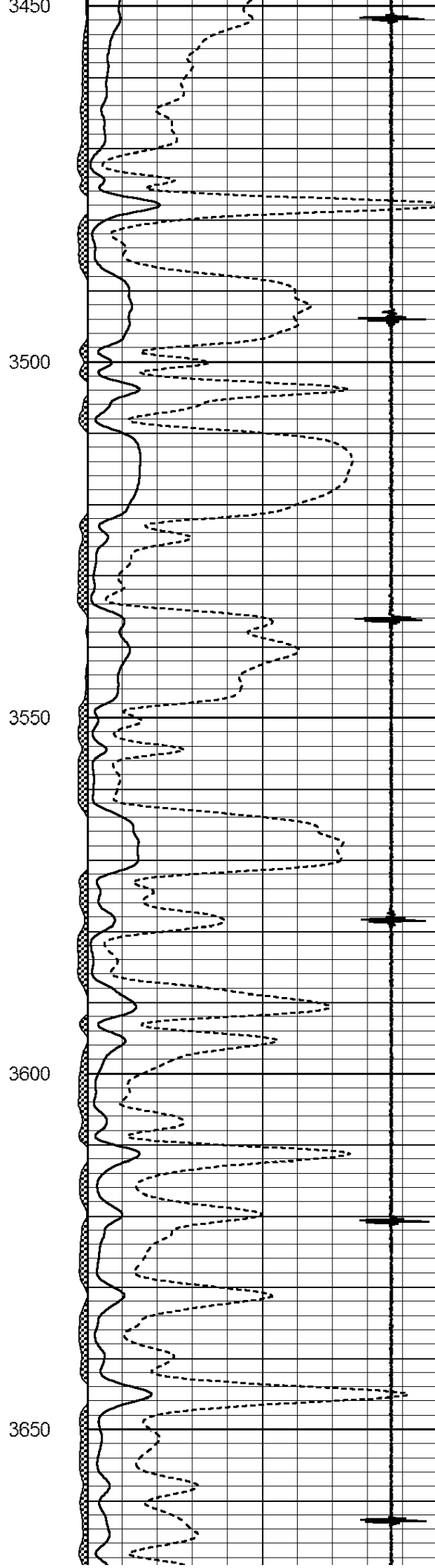
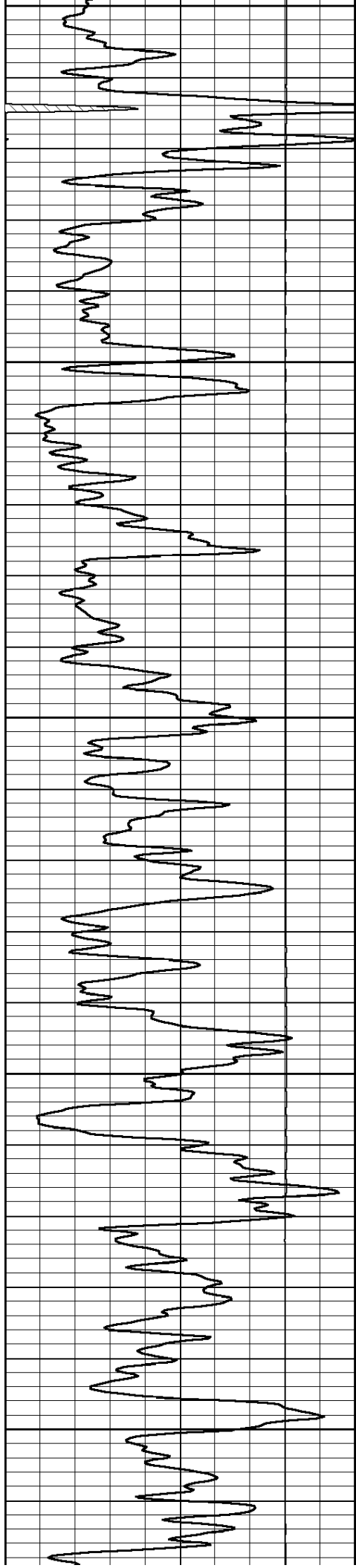


Top of Cement @ 2894

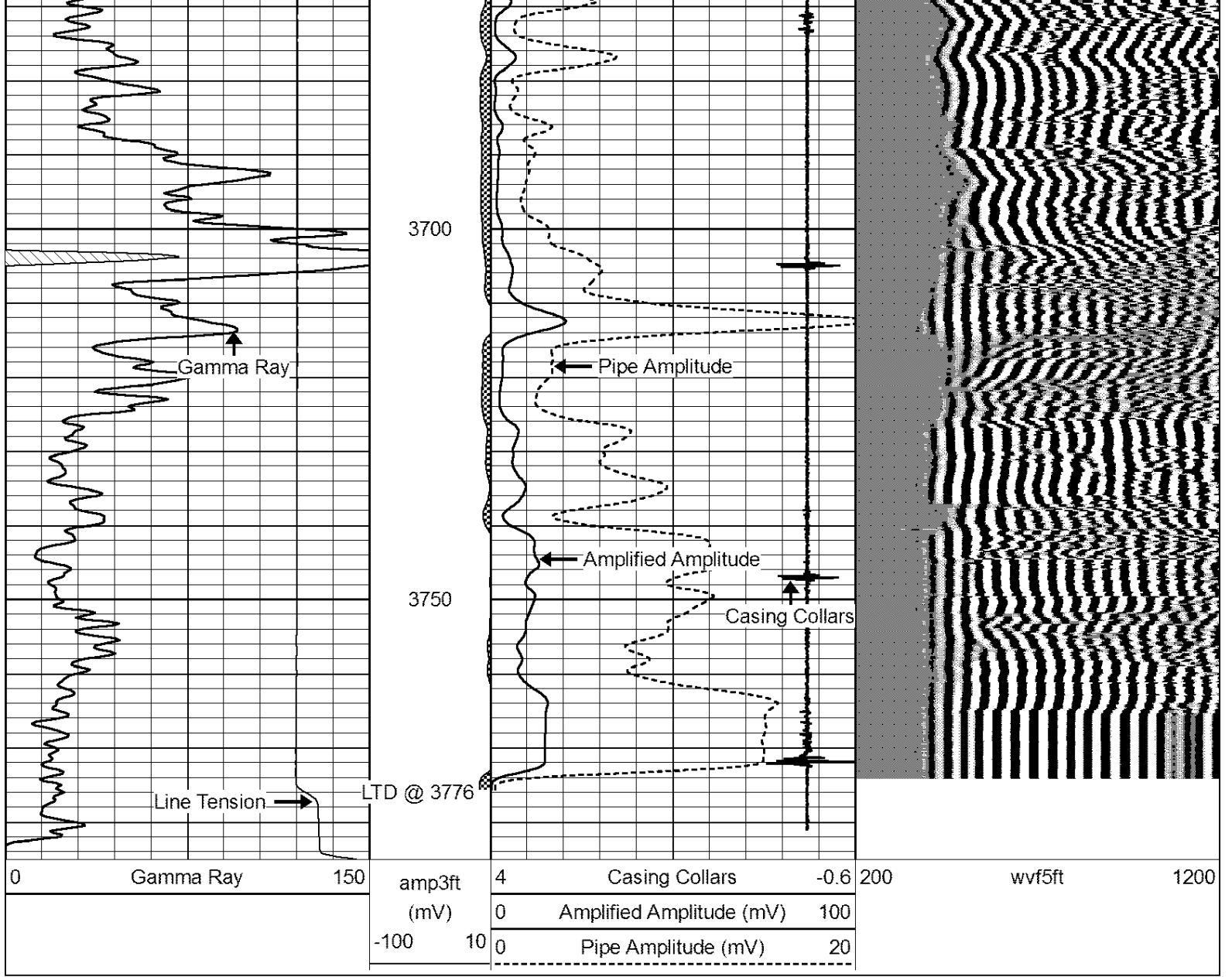






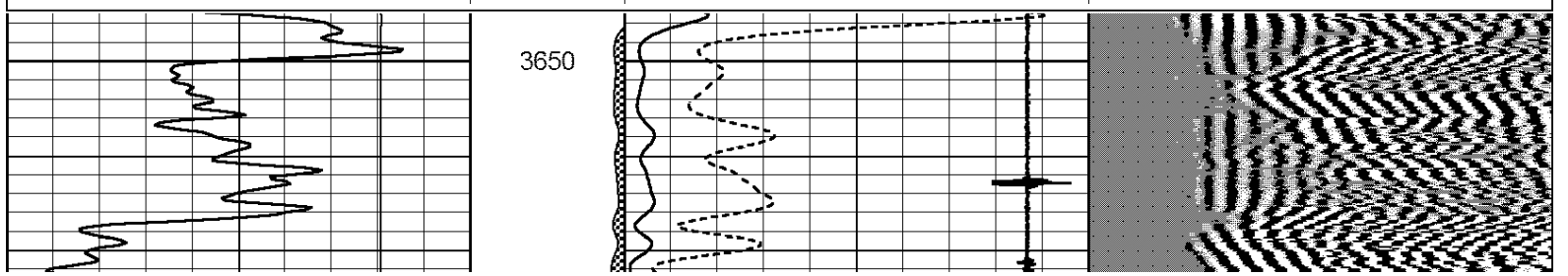
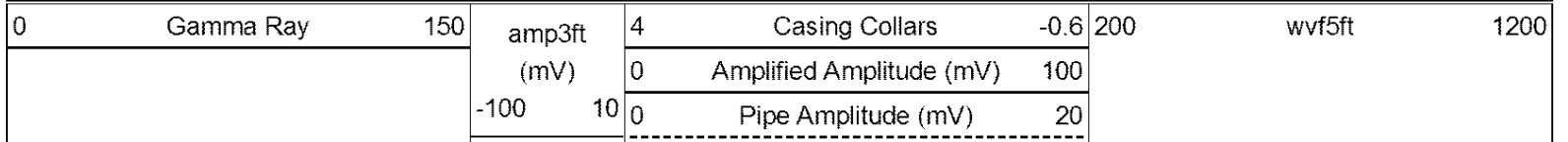




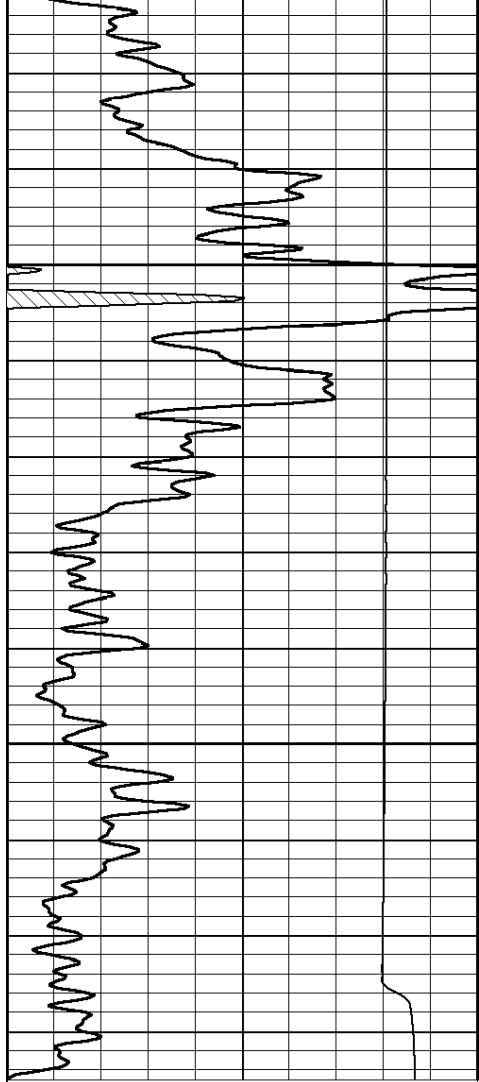


# Repeat Section

Database File: klabzuba\_northtrust#3-10-15-20.db  
 Dataset Pathname: grcbl/pass2  
 Presentation Format: cldr  
 Dataset Creation: Thu May 24 13:07:49 2012 by Log SCH 111116  
 Charted by: Depth in Feet scaled 1:240

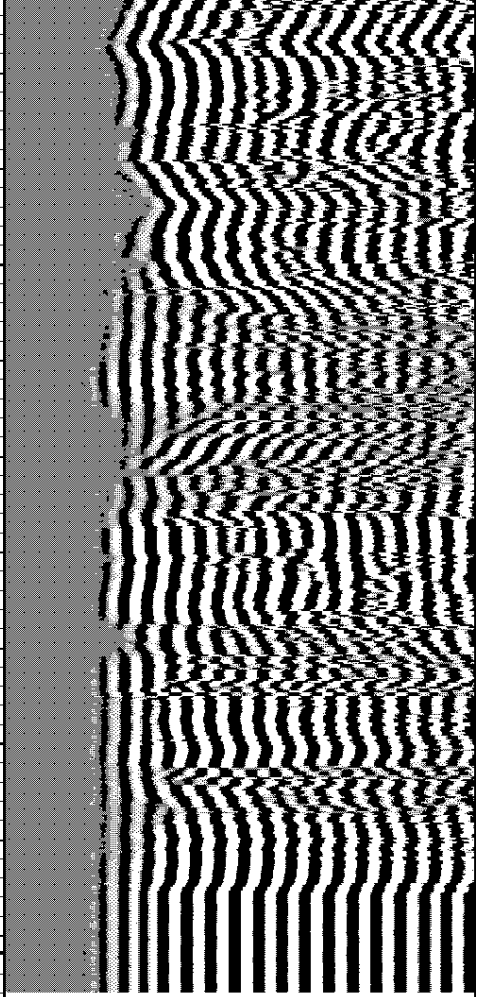
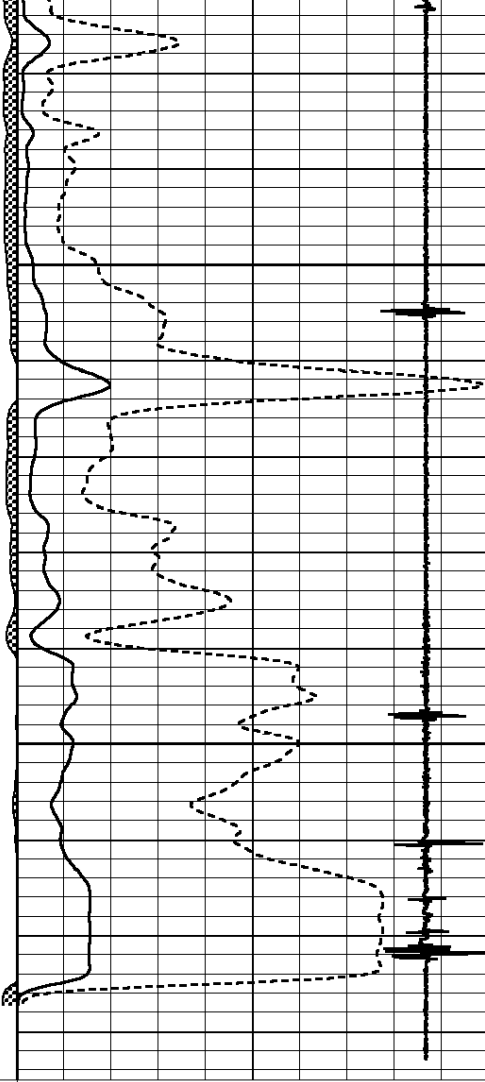






3700

3750



0 Gamma Ray 150

amp3ft 4 Casing Collars -0.6

200 wvf5ft 1200

(mV) 0 Amplified Amplitude (mV) 100

-100 10 0 Pipe Amplitude (mV) 20