



SUPERIOR
Hays,
Kansas

**RADIATION
GUARD
LOG**

Company PALOMINO PETROLEUM, INC.
Well FAY #1
Field
County LANE
State KANSAS

Company PALOMINO PETROLEUM, INC.
Well FAY #1
Field
County LANE State KANSAS

Location: 1363' FNL & 852' FEL
API # : 15-101-22374-0000
Other Services
SEC 10 TWP 16S RGE 27W
Permanent Datum GROUND LEVEL Elevation 2506
Log Measured From KELLY BUSHING 5' A.G.L.
Drilling Measured From KELLY BUSHING
Elevation
K.B. 2511
D.F. 2509
G.L. 2506

Date	6/27/12		
Run Number	ONE		
Depth Driller	4500		
Depth Logger	4500		
Bottom Logged Interval	4499		
Top Log Interval	3400		
Casing Driller	8 5/8" @ 217		
Casing Logger	216		
Bit Size	7 7/8		
Type Fluid in Hole	CHEMICAL MUD	CHLORIDES 4000	
Density / Viscosity	9.5/65		
pH / Fluid Loss	10.5/10.4		
Source of Sample	FLOWLINE		
Rin @ Meas. Temp	0.50 @ 88F		
Rmf @ Meas. Temp	0.38 @ 88F		
Rmc @ Meas. Temp	0.60 @ 88F		
Source of Rmf / Rmc	MEASURED		
Rin @ BHT	0.36 @ 121F		
Time Circulation Stopped	2 HOURS		
Time Logger on Bottom			
Maximum Recorded Temperature	121F		
Equipment Number	680		
Location	HAYS, KS.		
Recorded By	JEFF GRONEMEG		
Witnessed By	PHIL ASKEY		

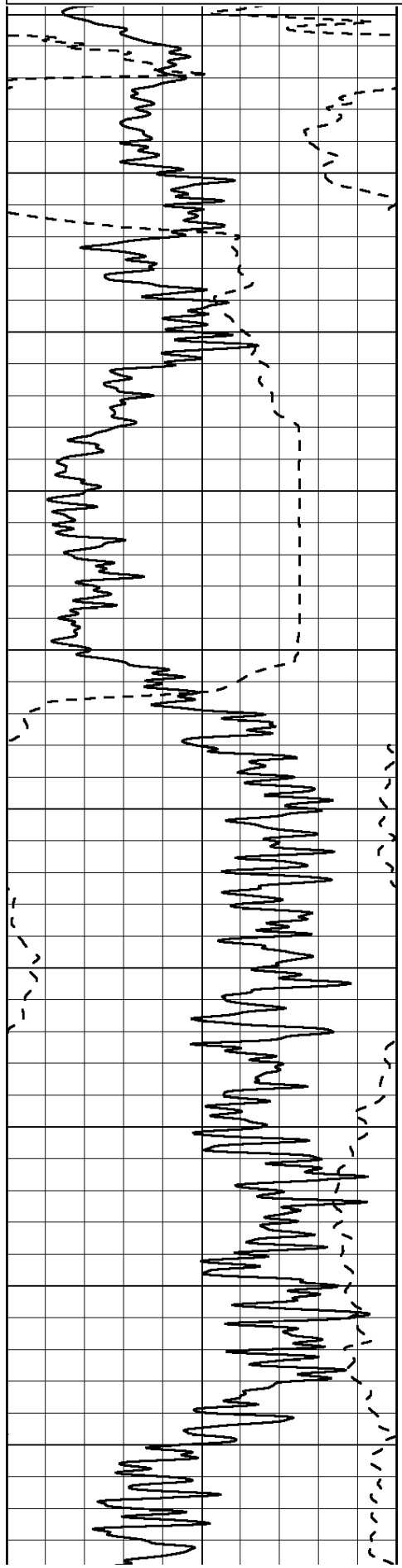
<<< Fold Here >>>

All interpretations are opinions based on inferences from electrical or other measurements and we cannot and do not guarantee the accuracy or correctness of any interpretation, and we shall not, except in the case of gross or willful negligence on our part, be liable or responsible for any loss, costs, damages, or expenses incurred or sustained by anyone resulting from any interpretation made by any of our officers, agents or employees. These interpretations are also subject to our general terms and conditions set out in our current Price Schedule.

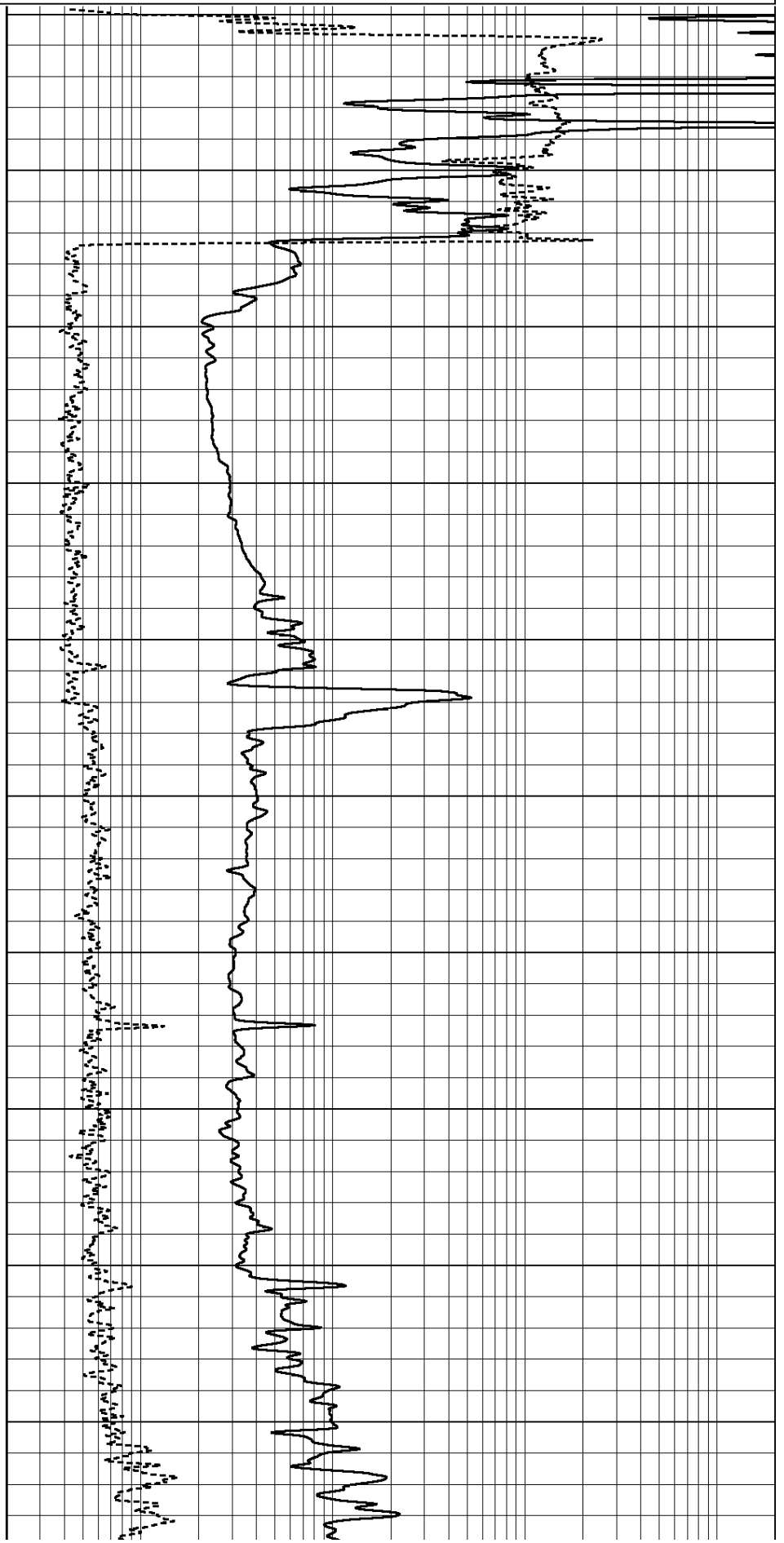
Comments

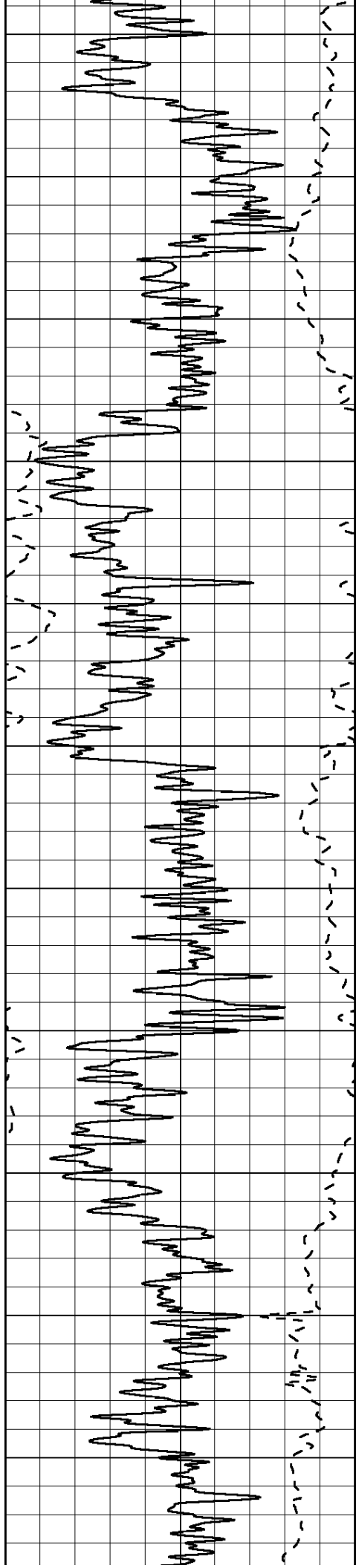
THANK YOU FOR USING SUPERIOR WELL SERVICE (785) 628-6395
DIRECTIONS
UTICA, KS - 8 1/2 MILES WEST TO RED CHIEF RD - 2.6 MILES NORTH TO RD 285
1 1/2 MILES EAST - EAST INTO USING FAR RIGHT GATE

0	GAMMA RAY (GAPI)	150	ABHV (ft3)	0.2	GUARD (Ohm-m)	2000
-100	SP (mV)	100		0	NEUTRON (NAPI)	1000
-----			TBHV (ft3)	-----		



0
50
100
150
200
250
300
350
400
450





500

550

600

650

700

750

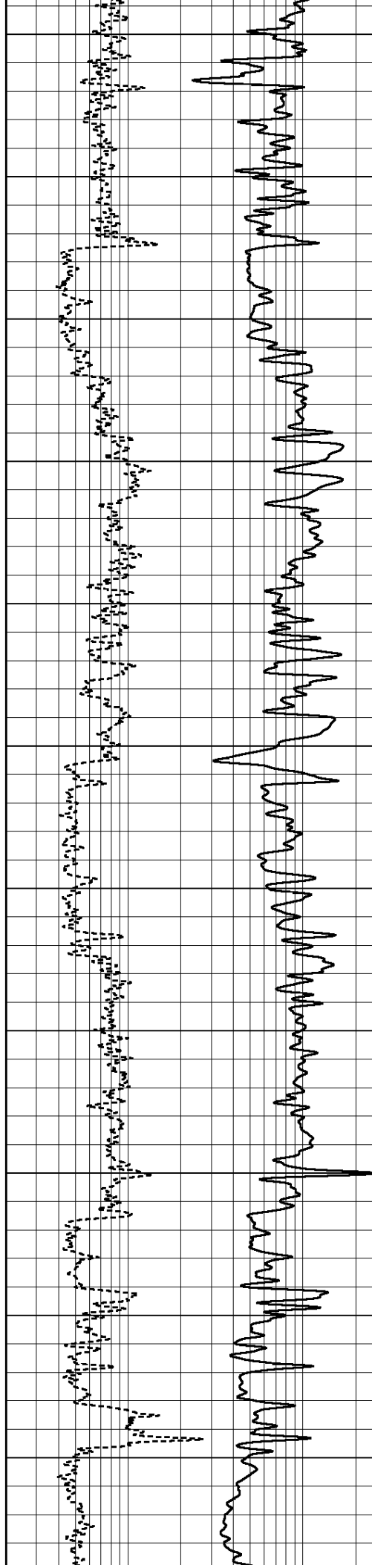
800

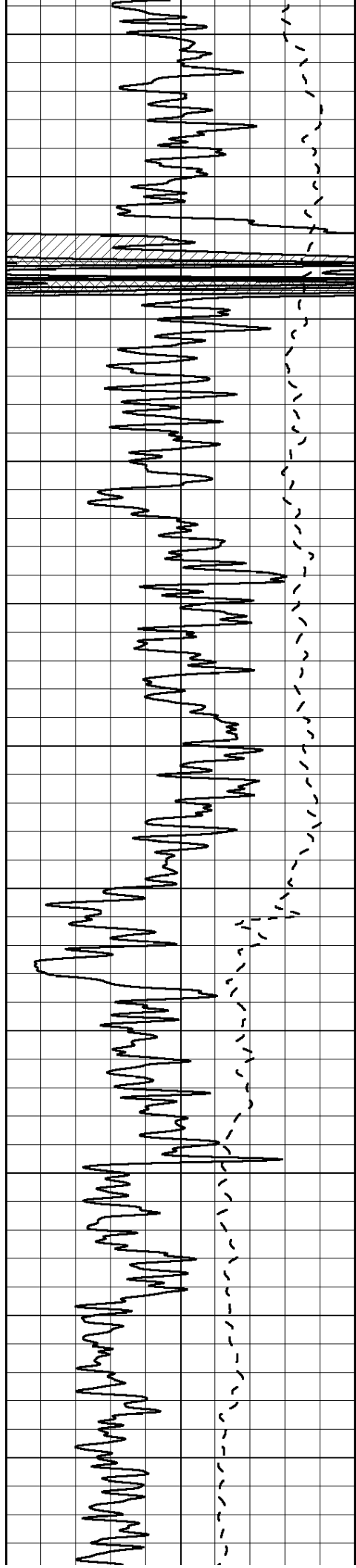
850

900

950

1000





1050

1100

1150

1200

1250

1300

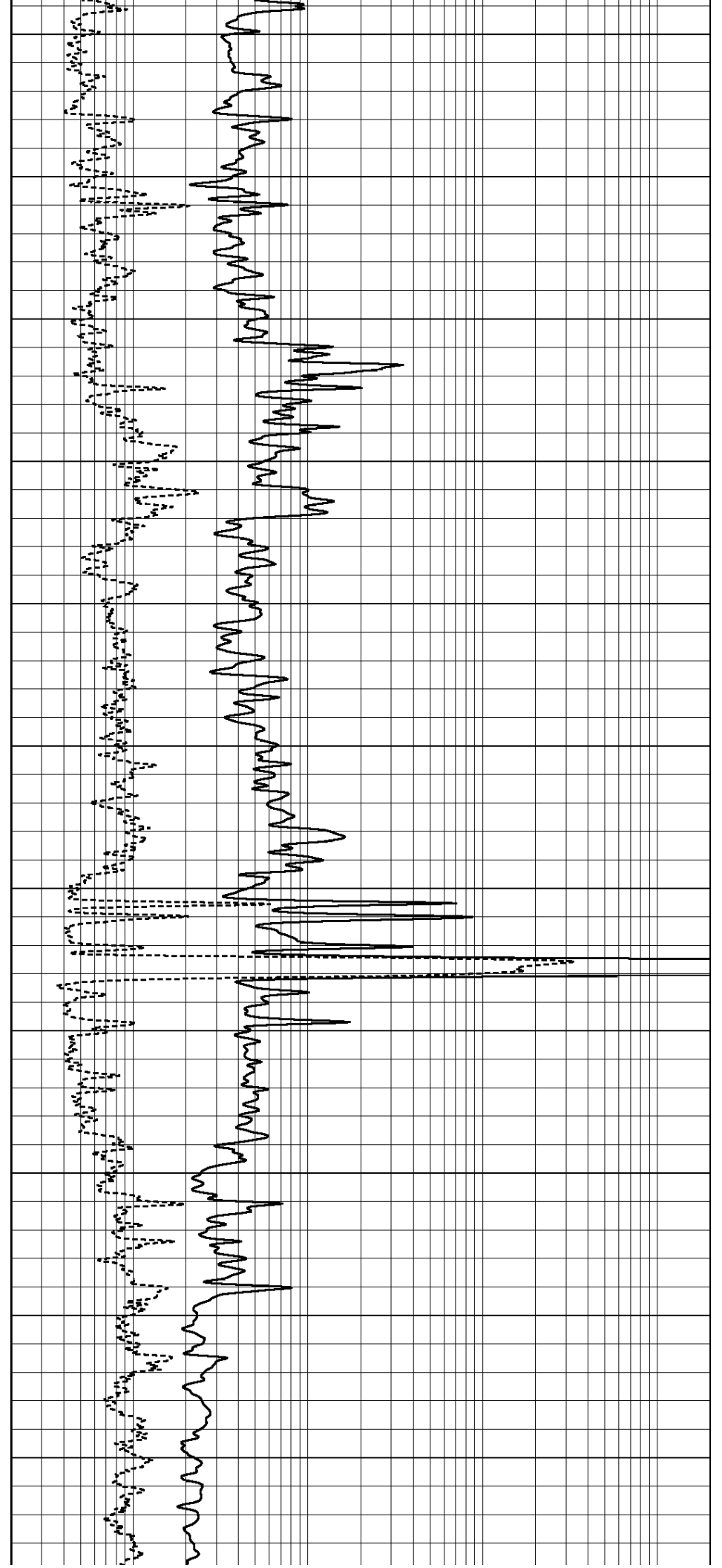
1350

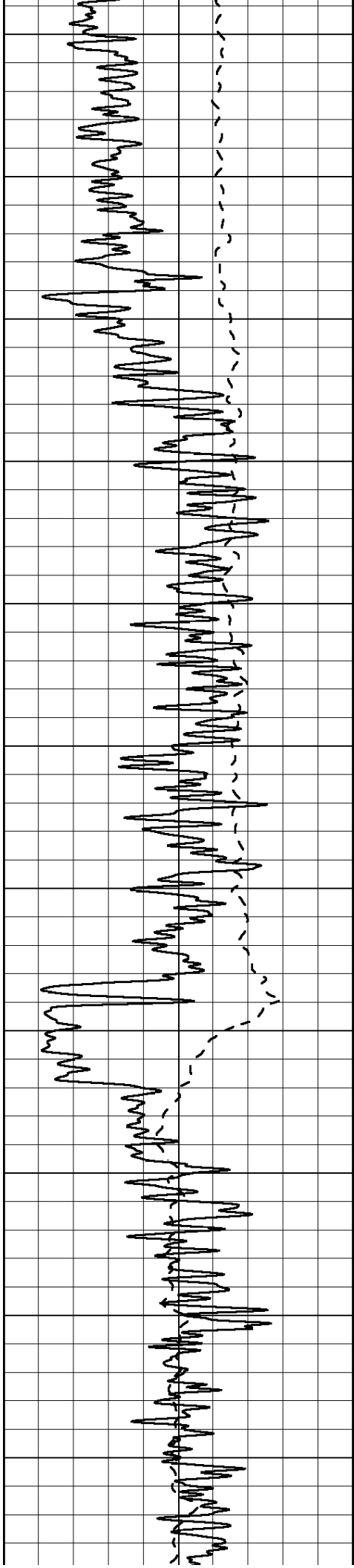
1400

1450

1500

1550





1600

1650

1700

1750

1800

1850

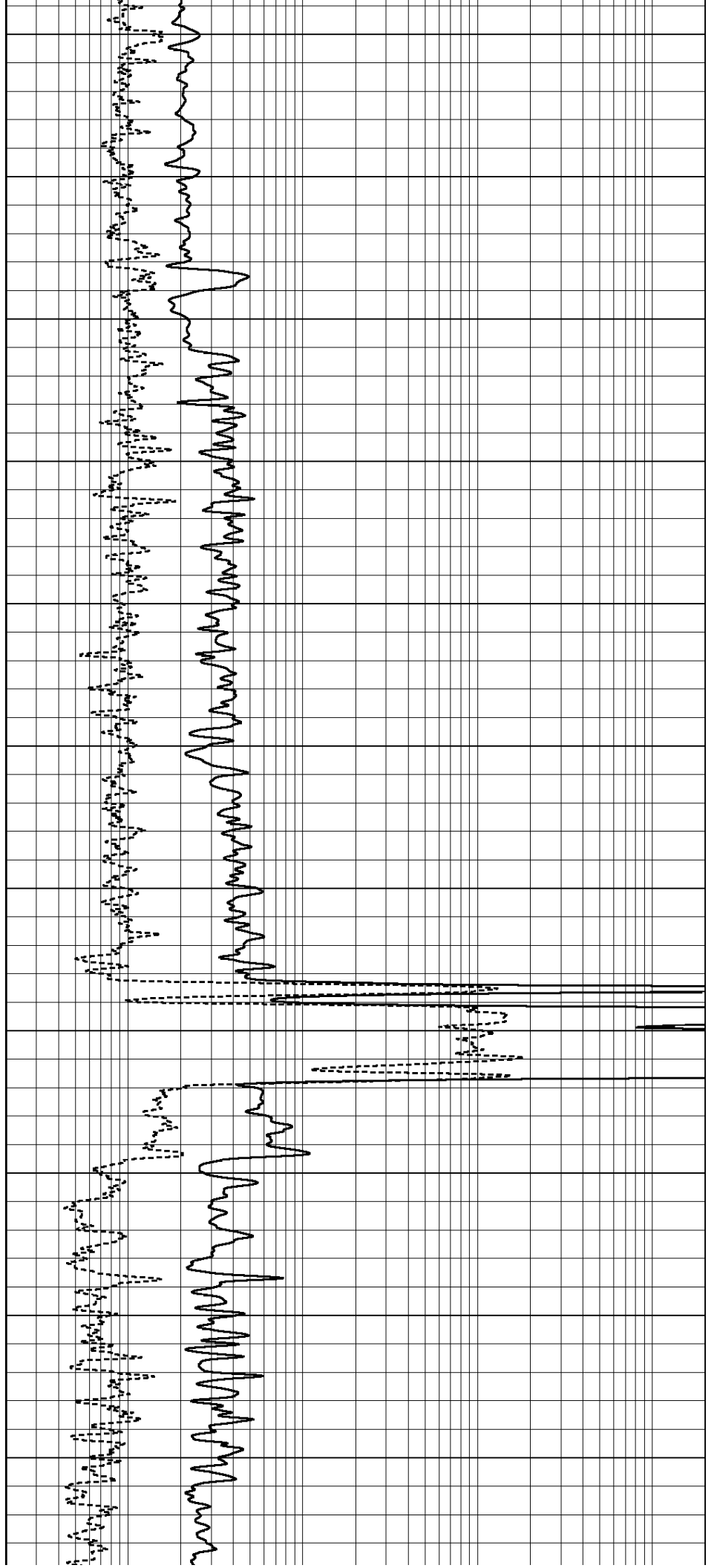
1900

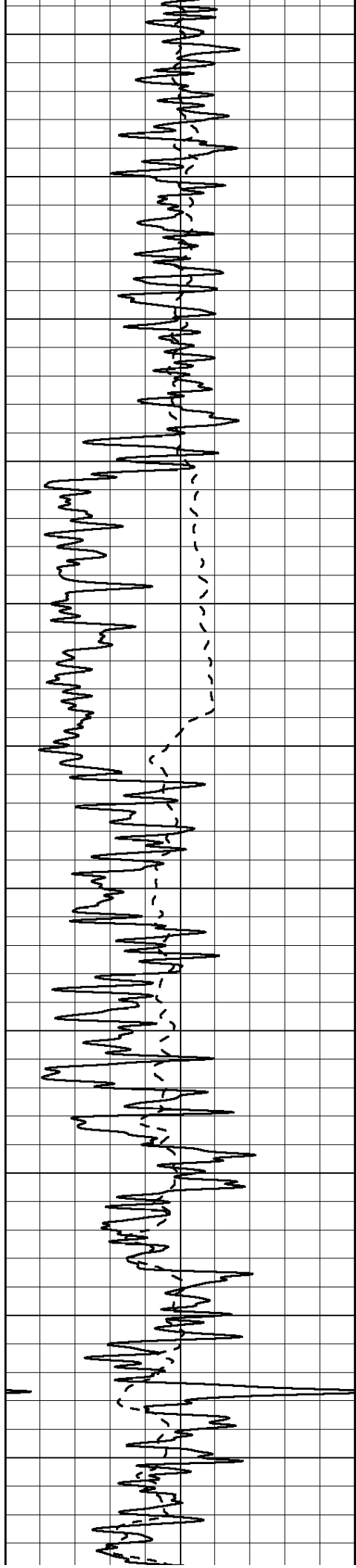
1950

2000

2050

2100





2150

2200

2250

2300

2350

2400

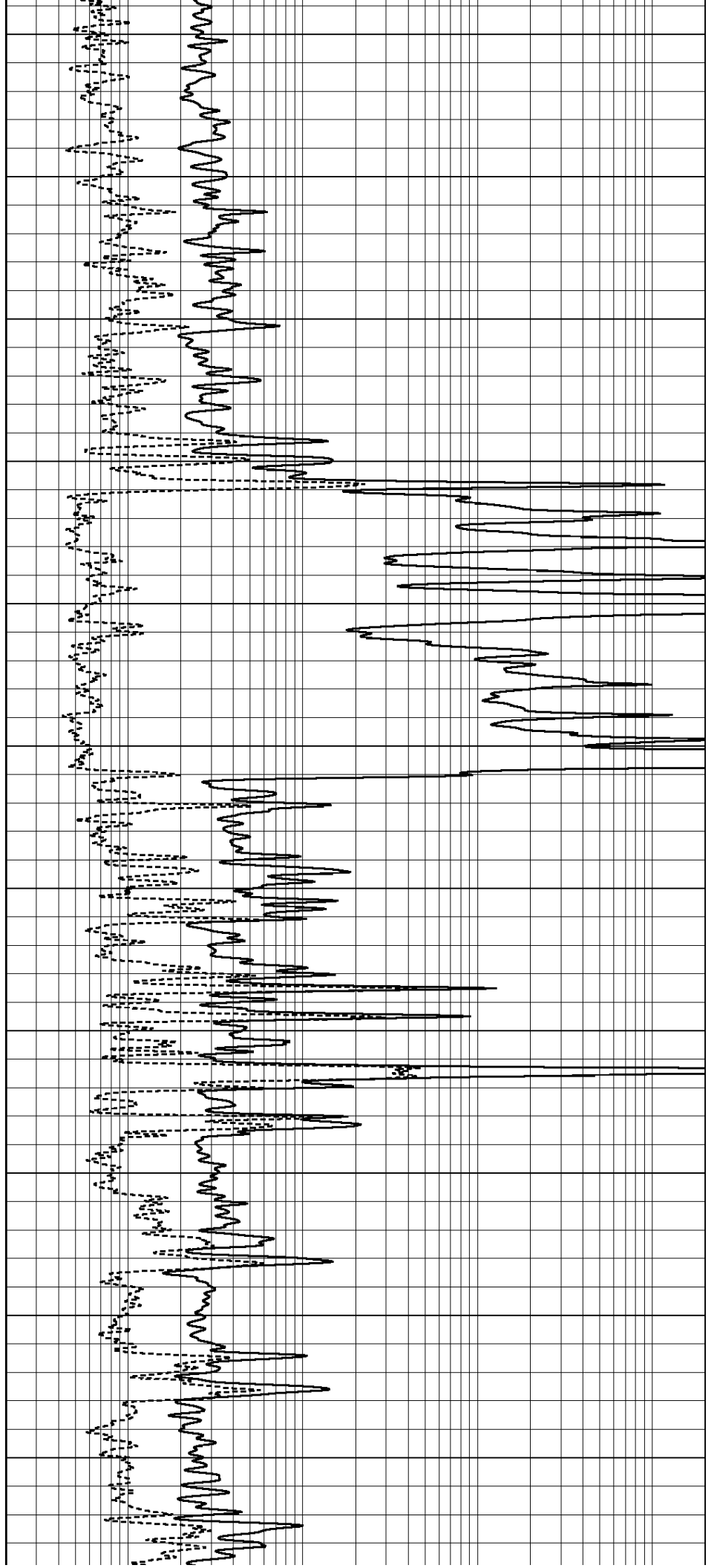
2450

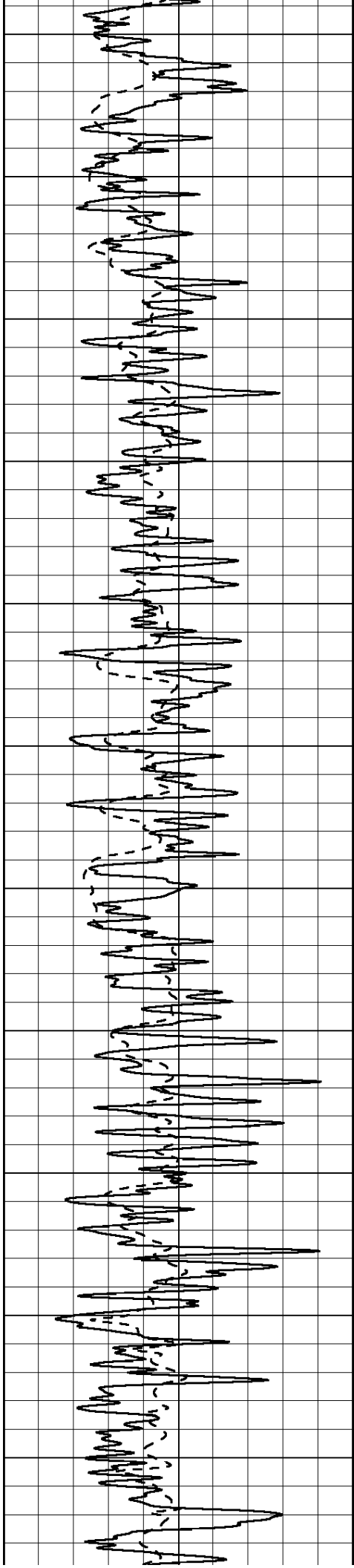
2500

2550

2600

2650





2700

2750

2800

2850

2900

2950

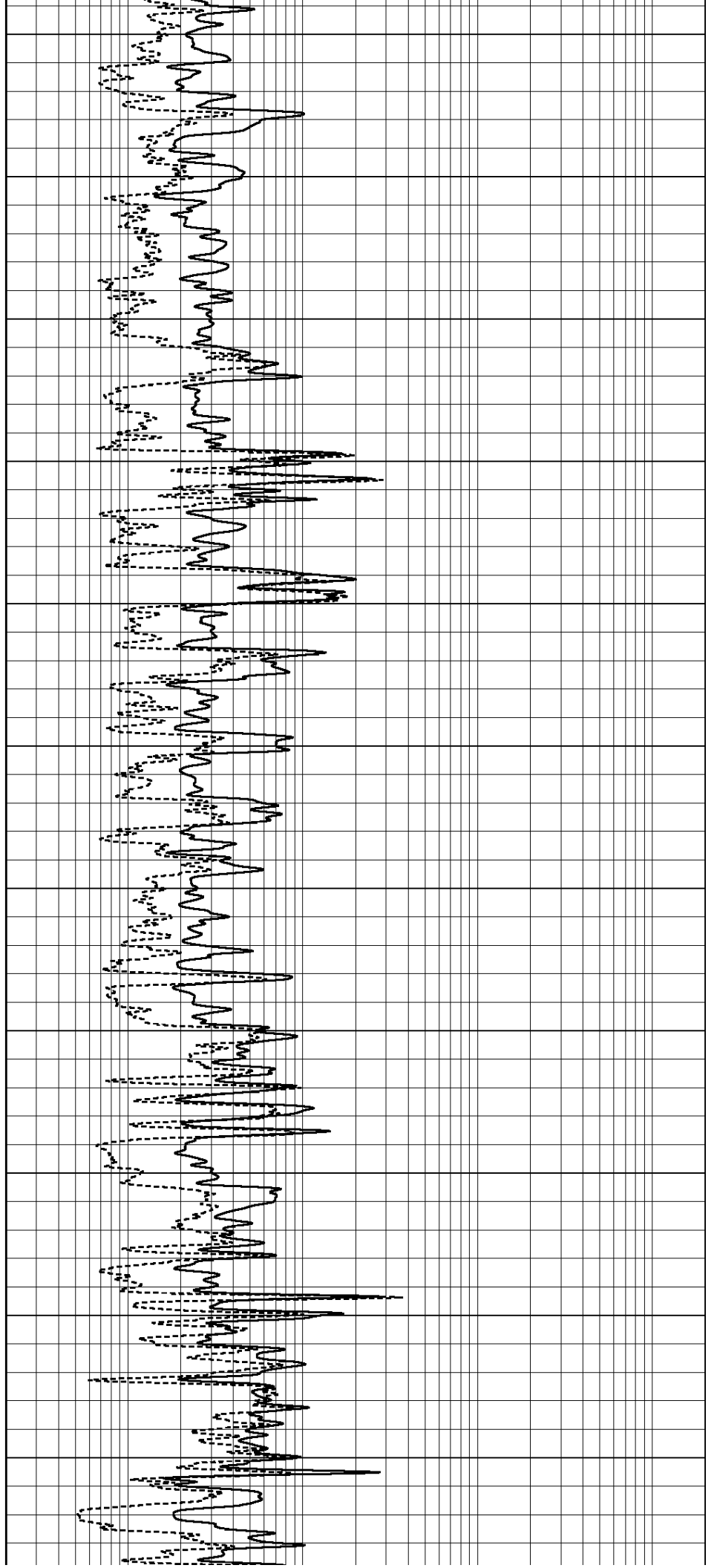
3000

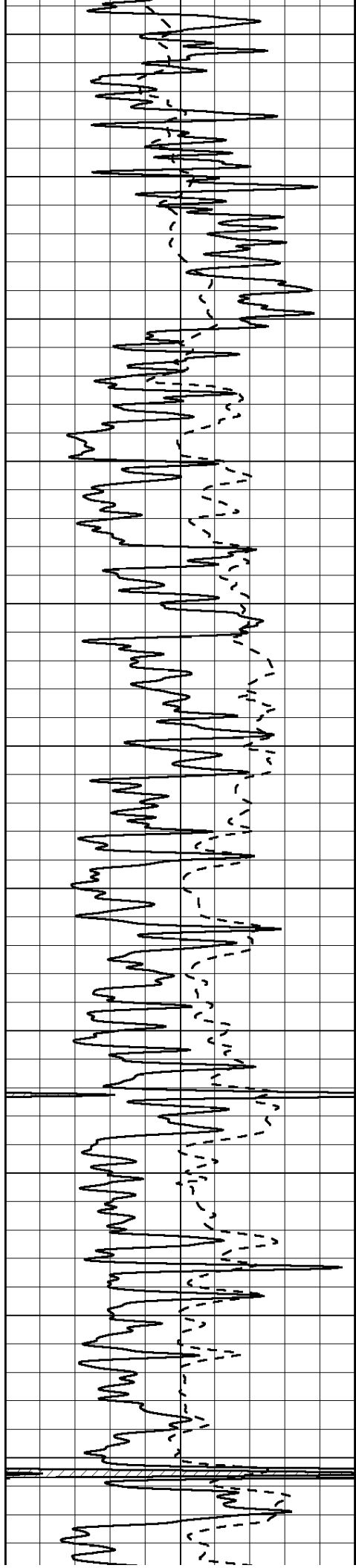
3050

3100

3150

3200





3250

3300

3350

3400

3450

3500

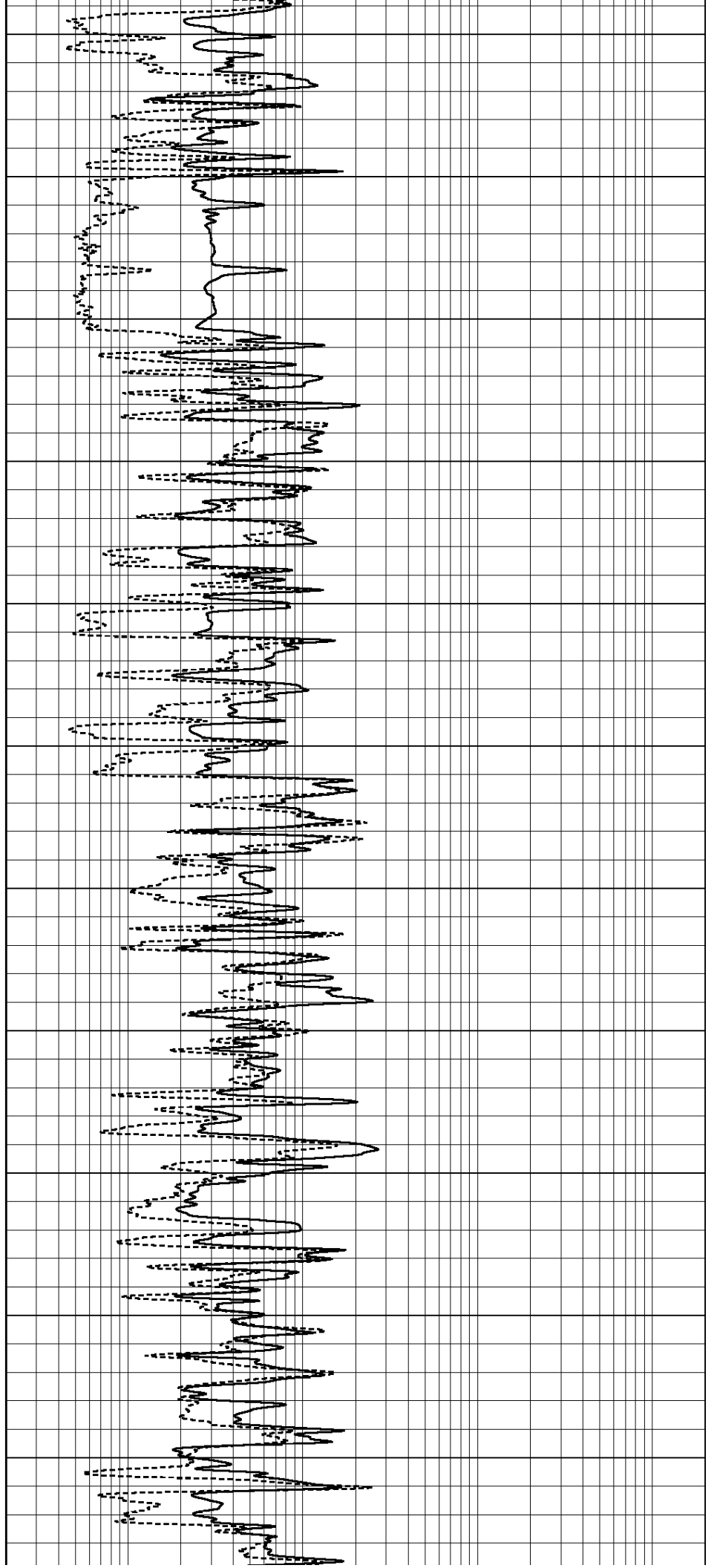
3550

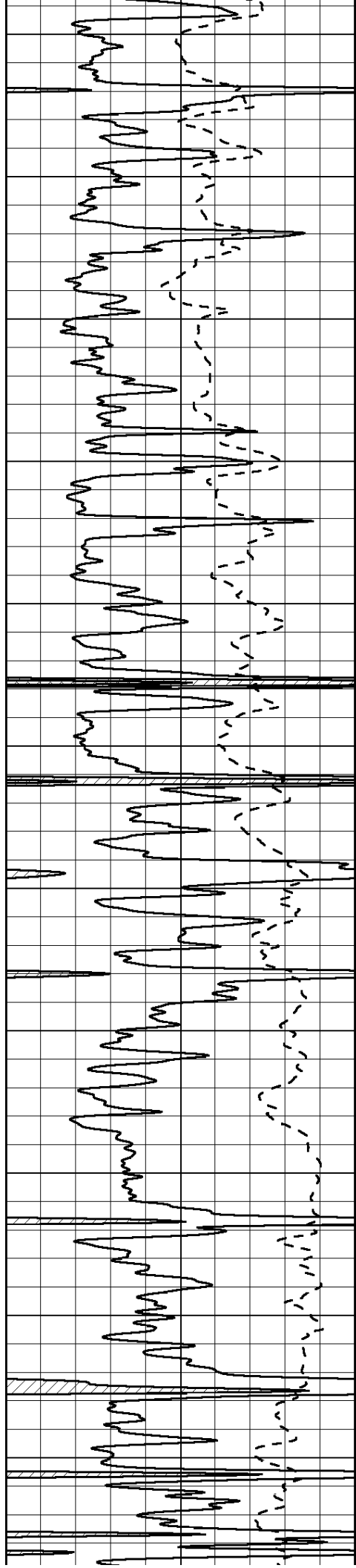
3600

3650

3700

3750





3800

3850

3900

3950

4000

4050

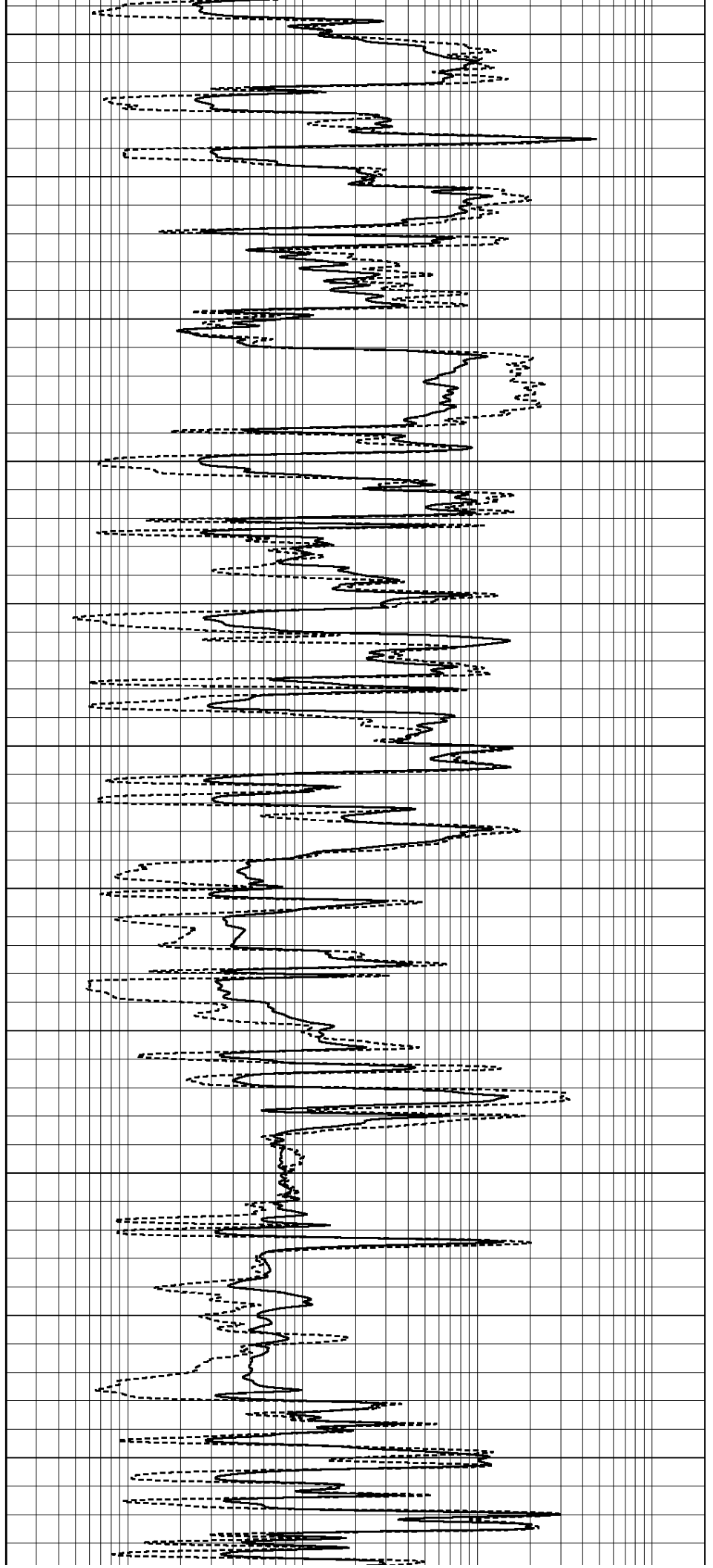
4100

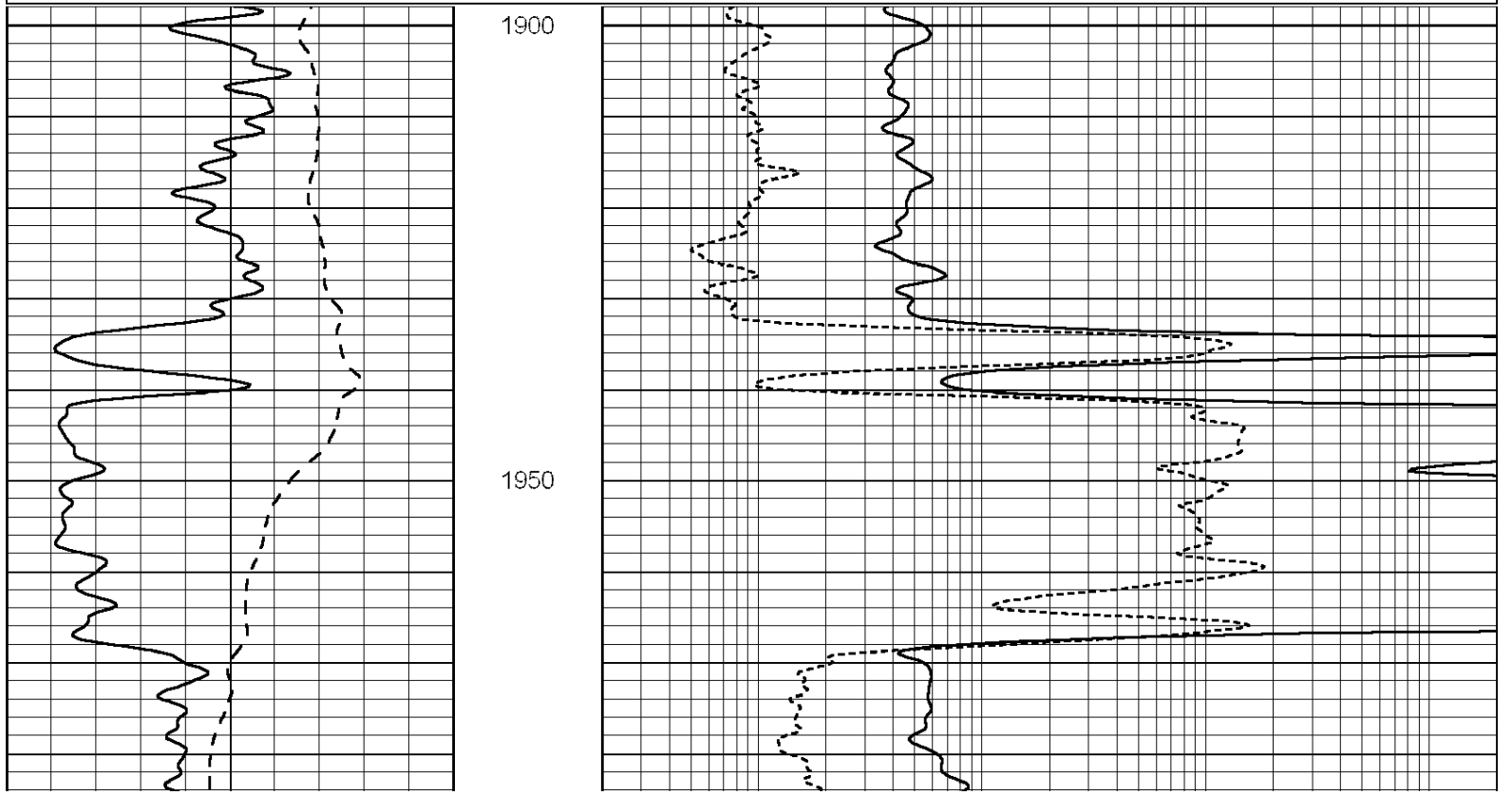
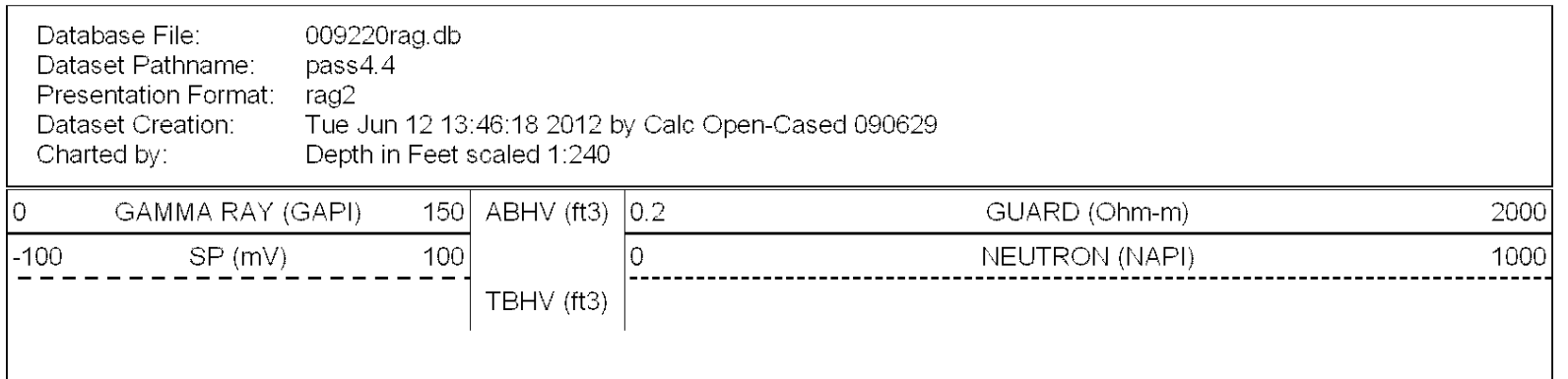
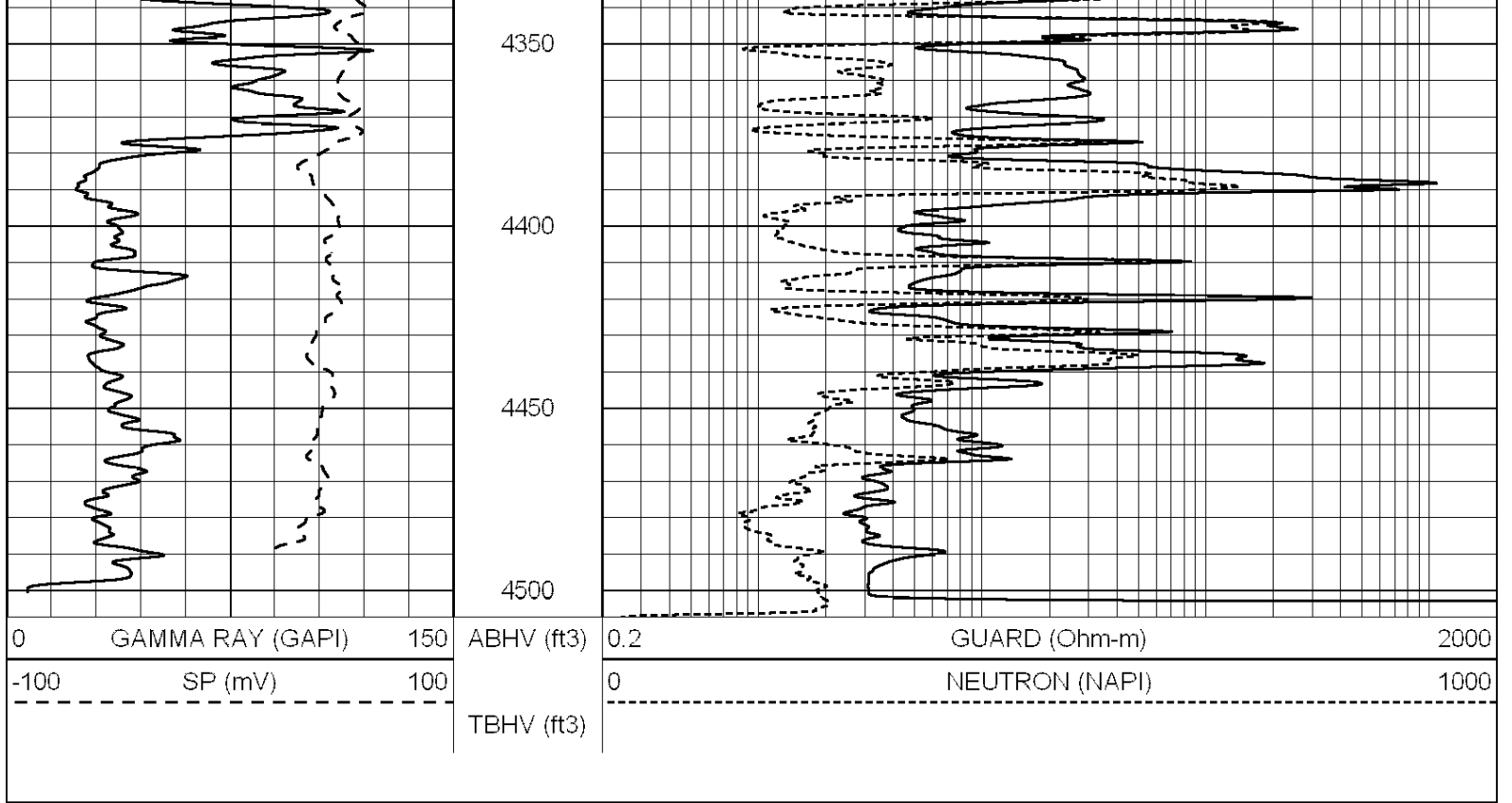
4150

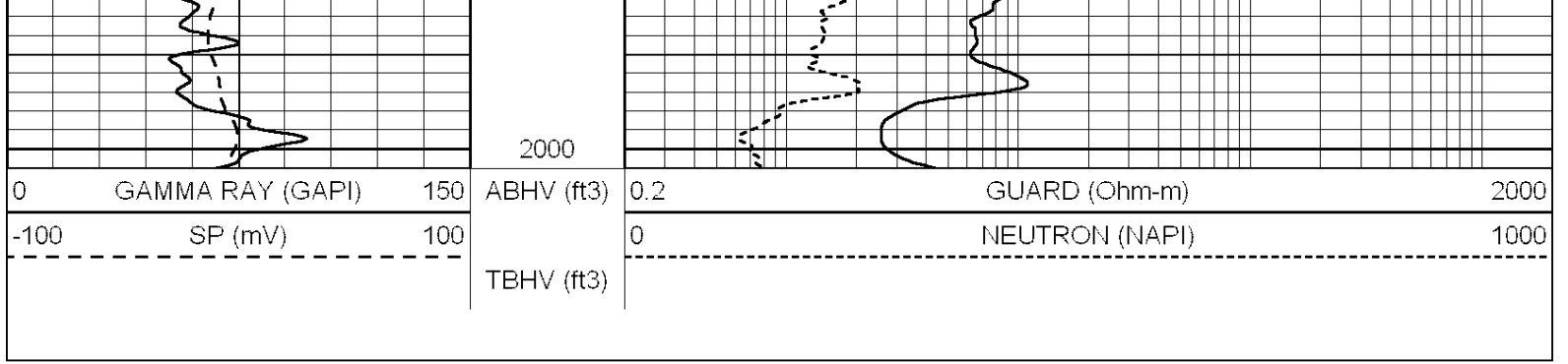
4200

4250

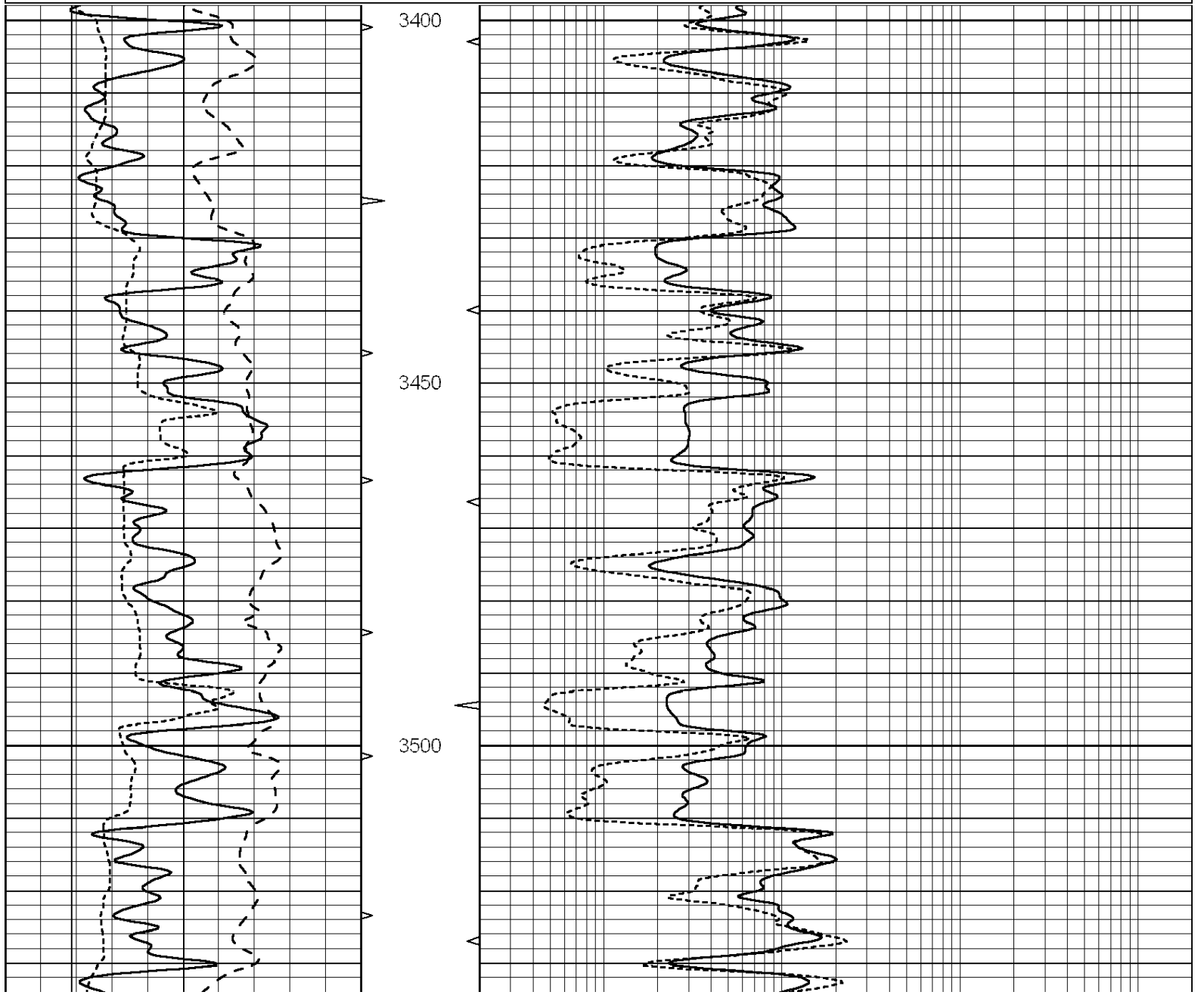
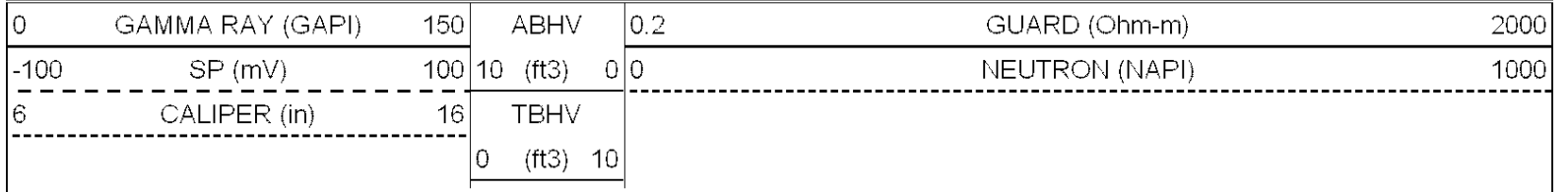
4300

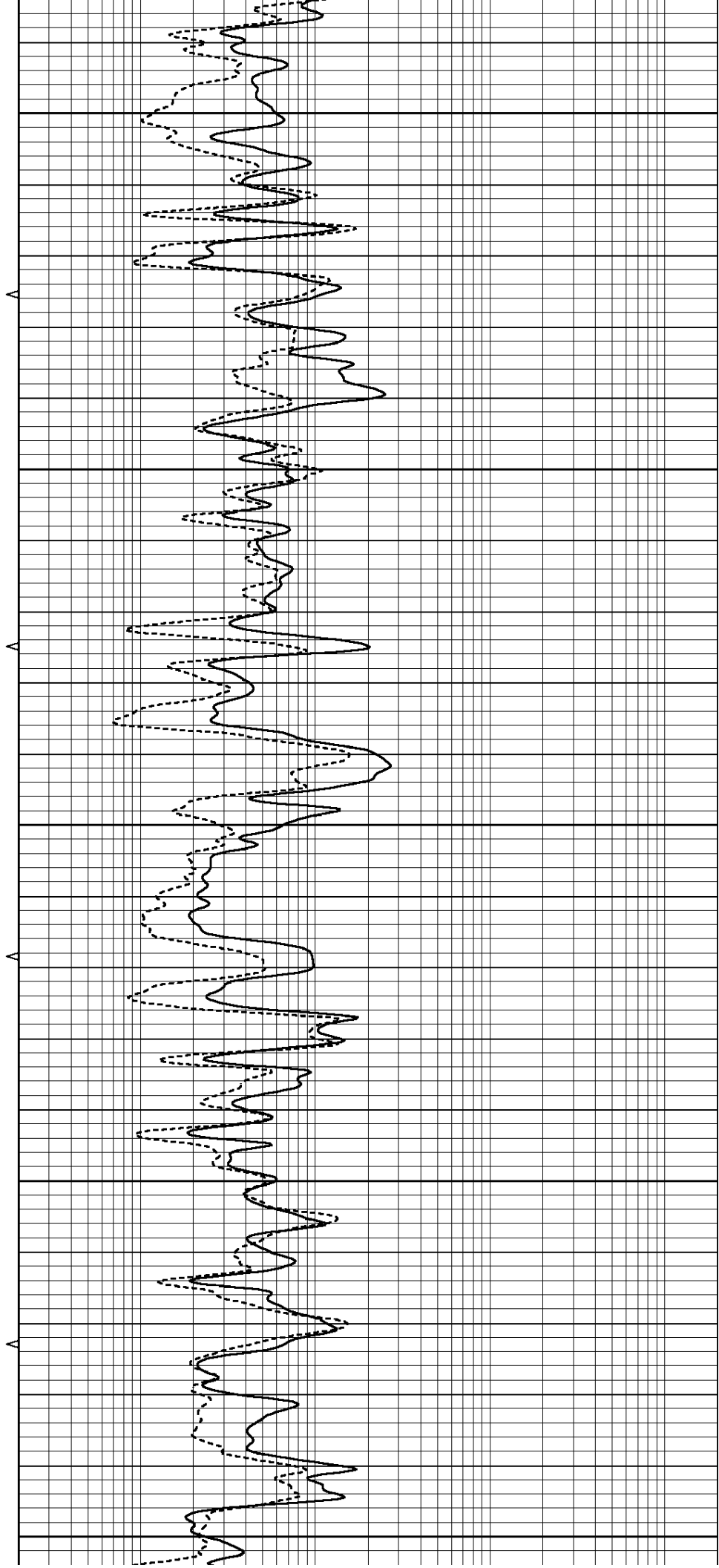
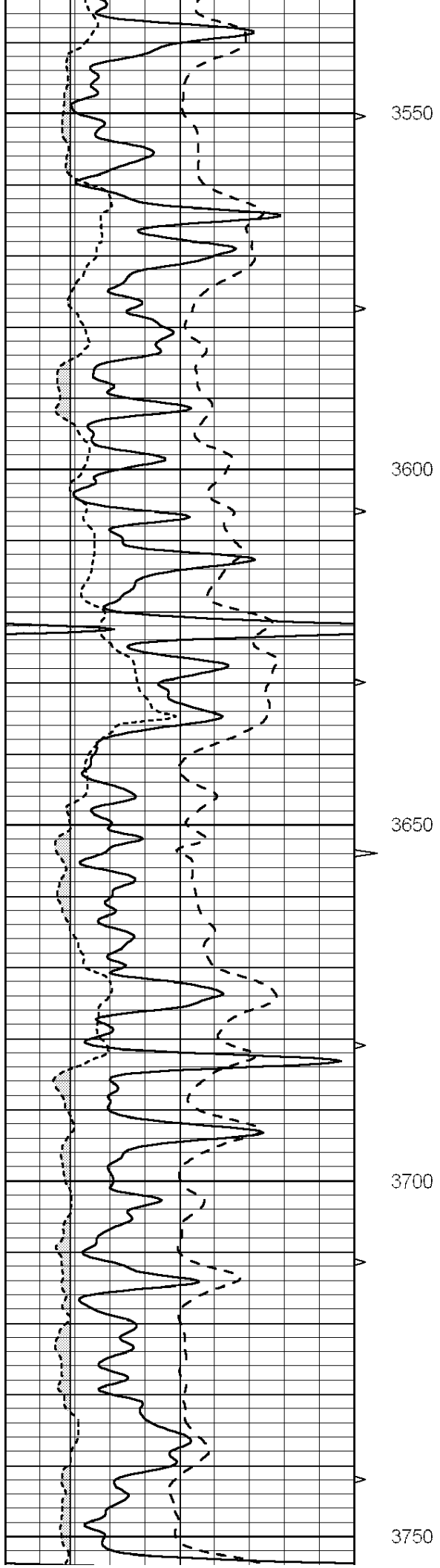


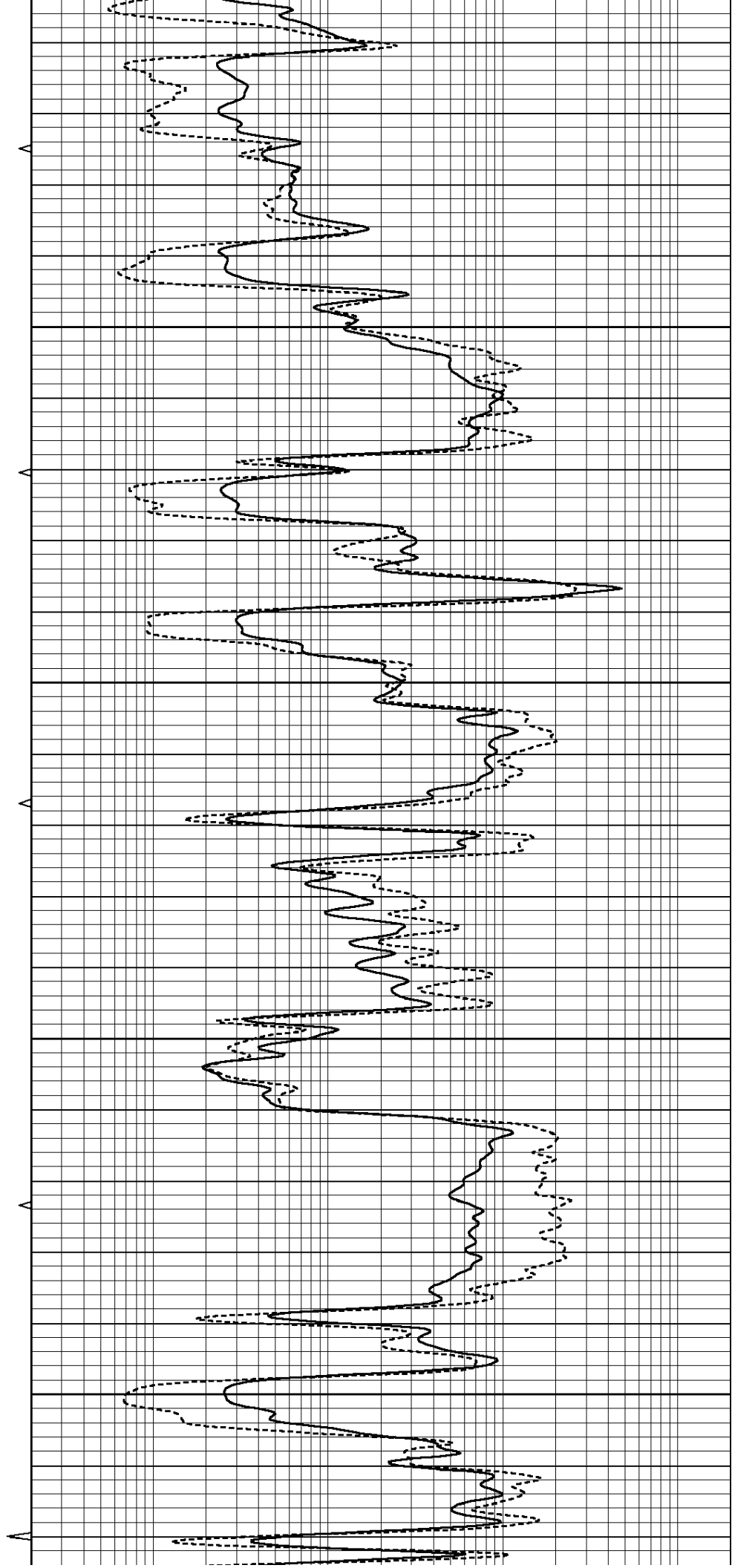
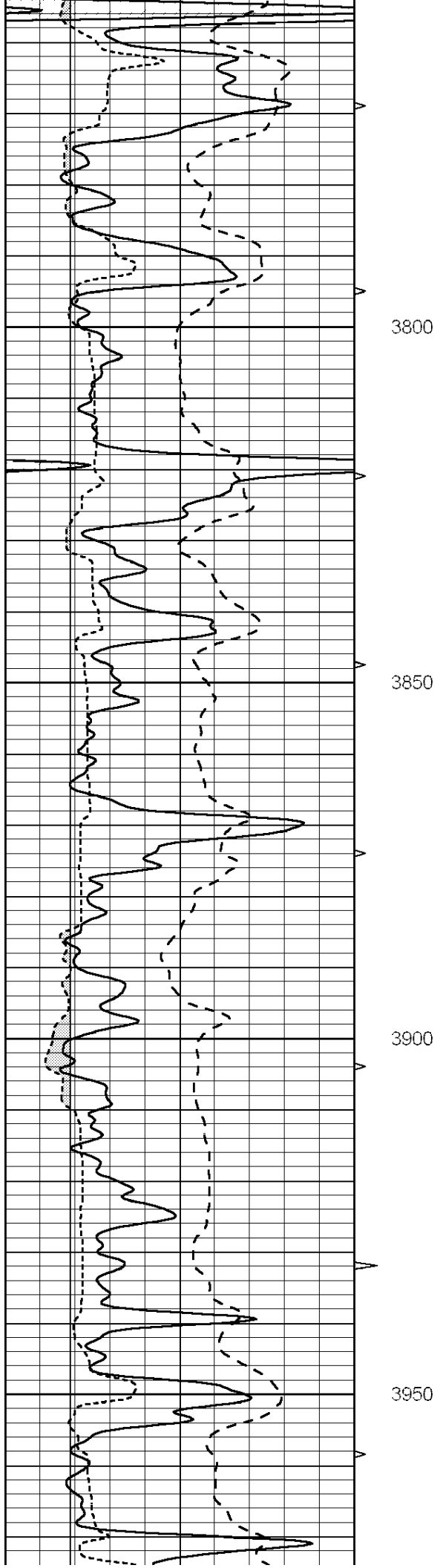


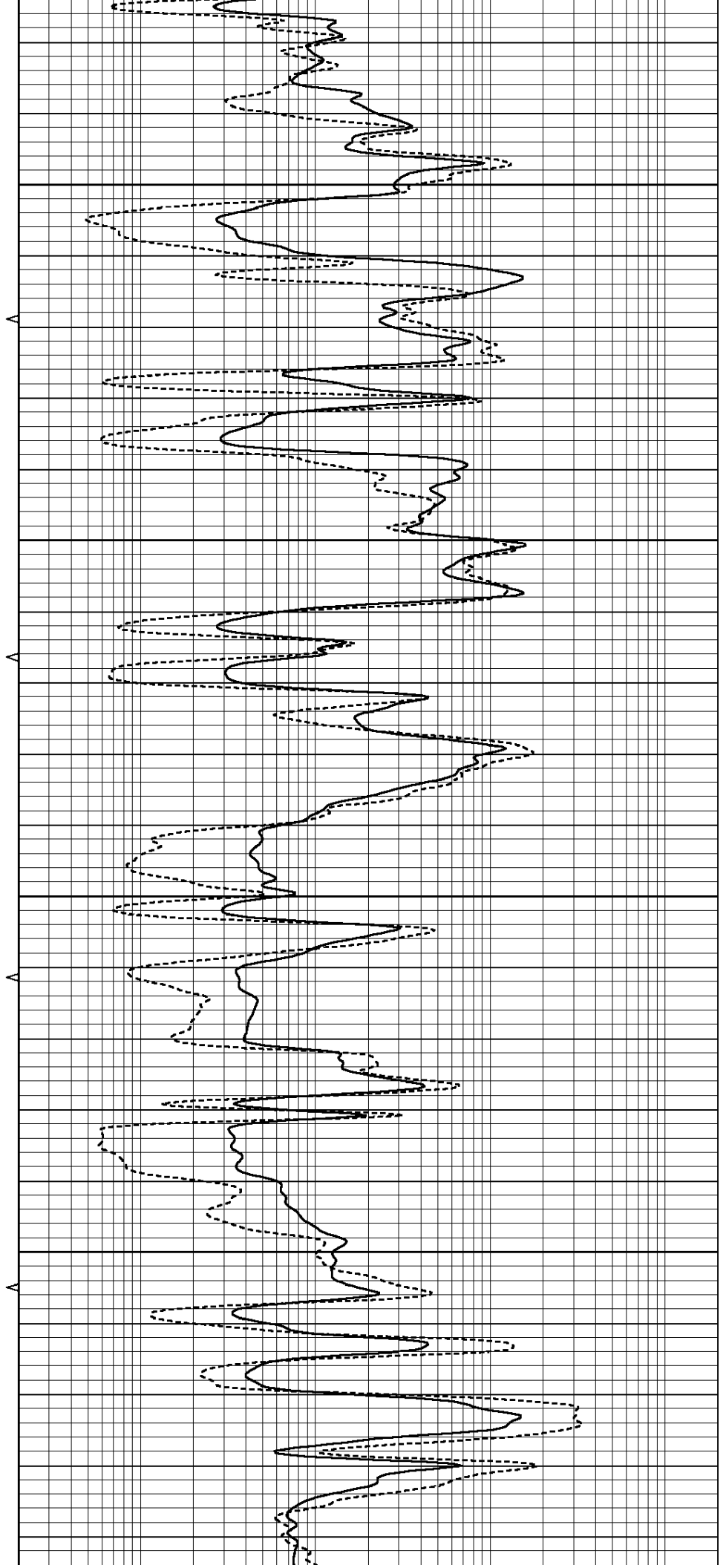
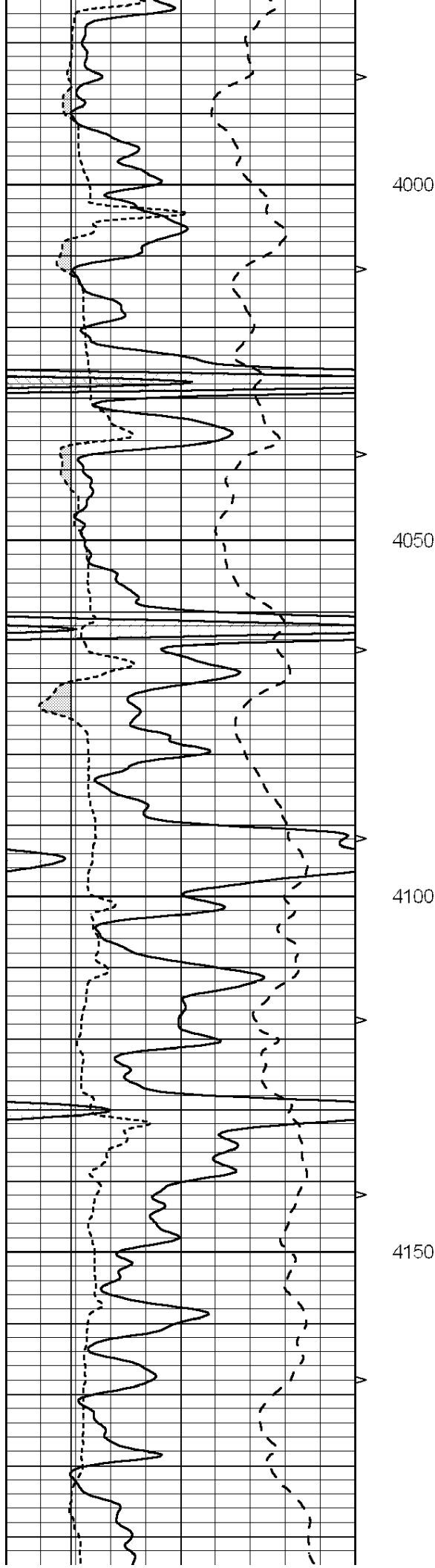


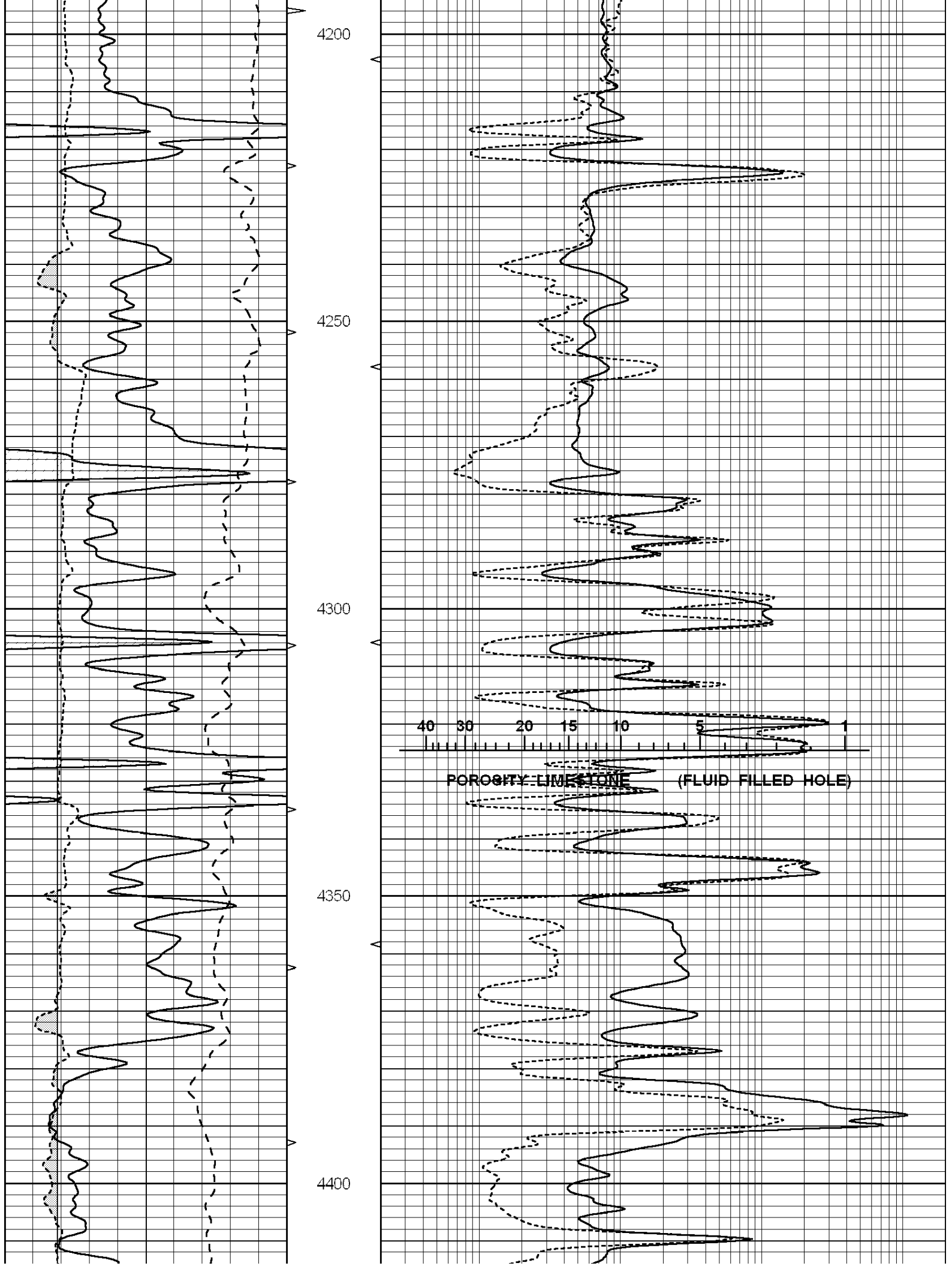
Database File: 009220rag.db
 Dataset Pathname: pass4.4
 Presentation Format: rag
 Dataset Creation: Tue Jun 12 13:46:18 2012 by Calc Open-Cased 090629
 Charted by: Depth in Feet scaled 1:240

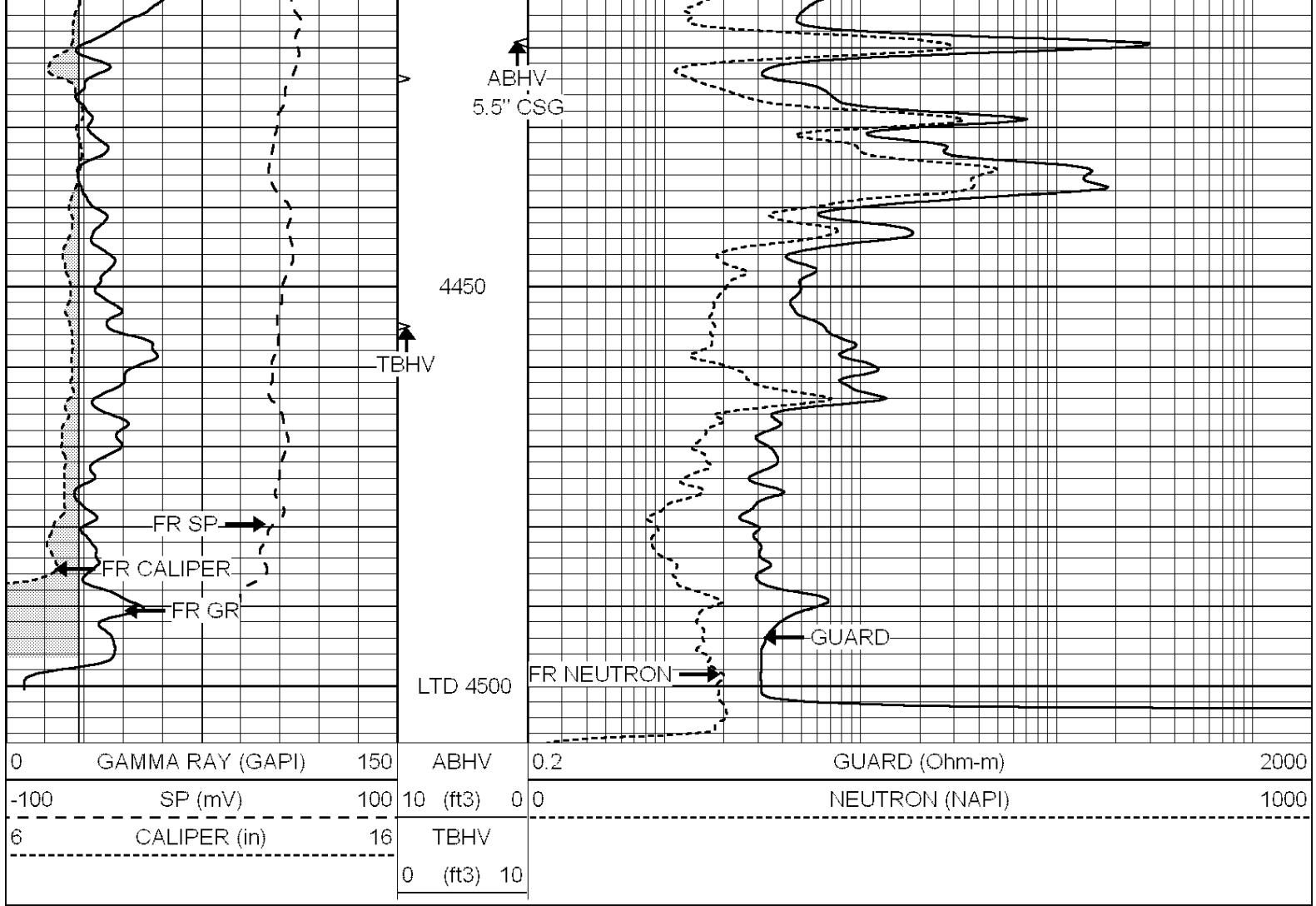










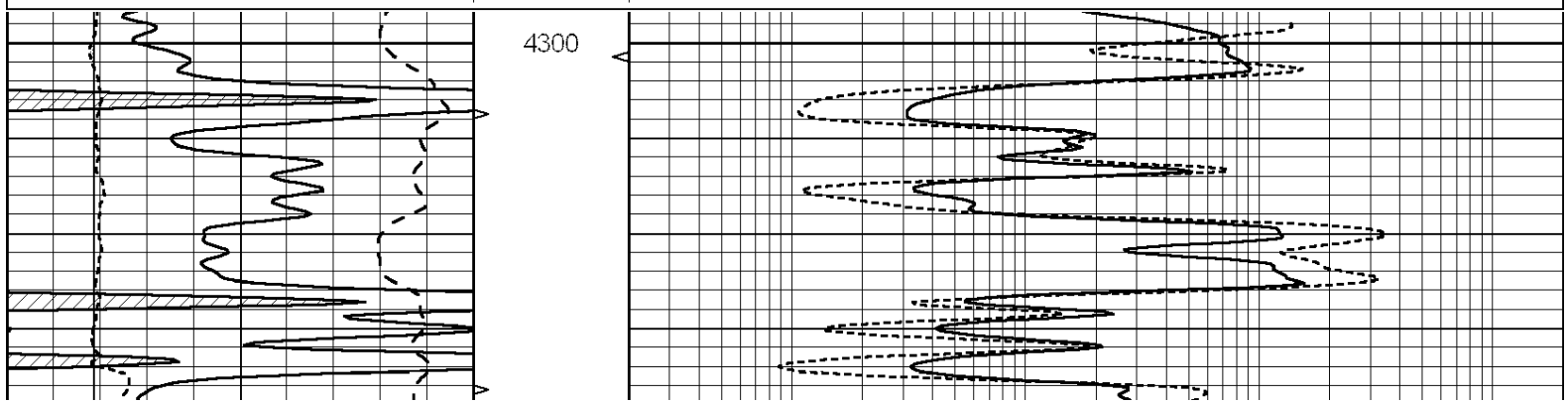


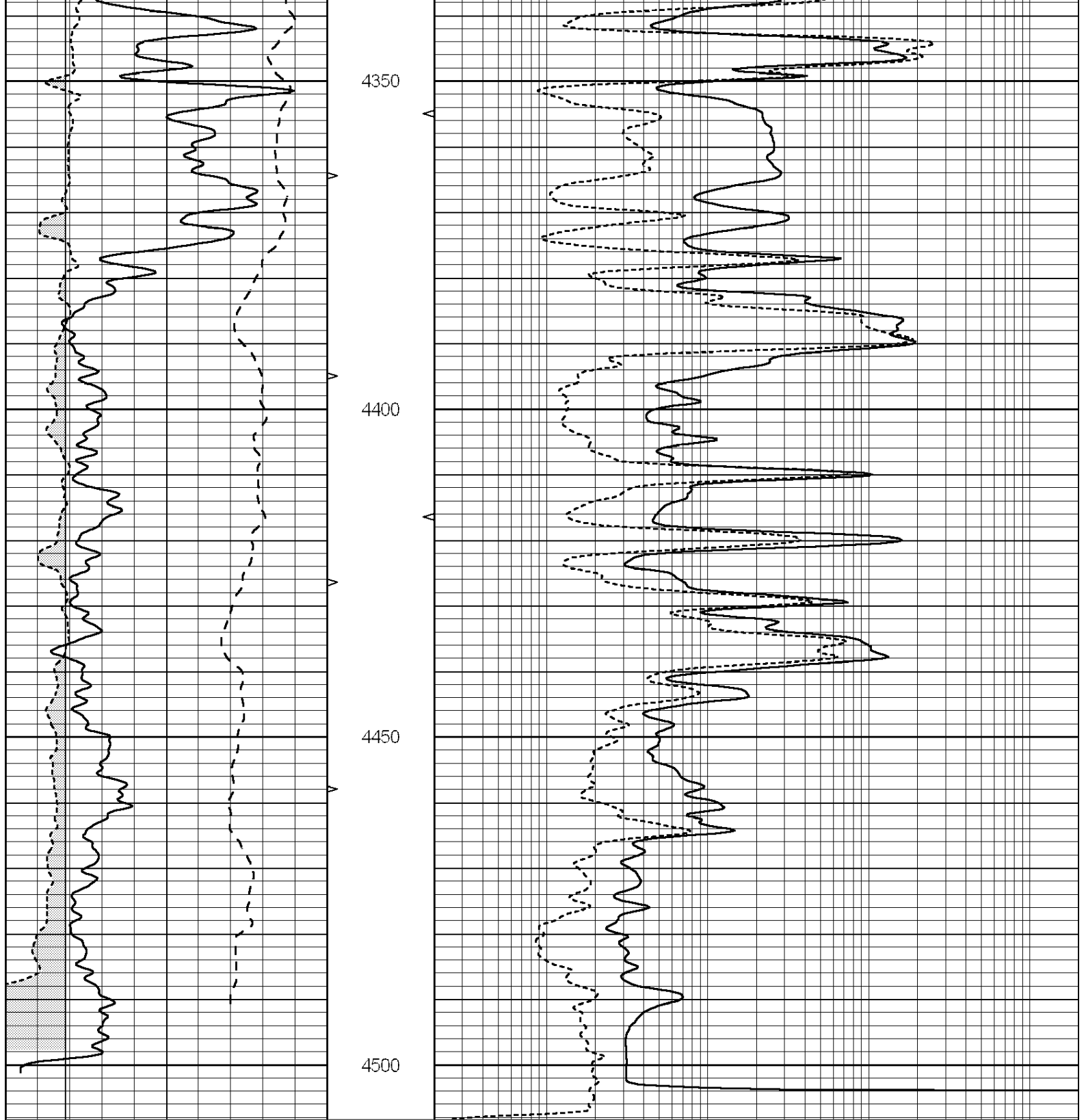
SUPERIOR
Hays,
Kansas

REPEAT SECTION

Database File: 009220rag.db
 Dataset Pathname: pass3.5
 Presentation Format: rag
 Dataset Creation: Tue Jun 12 13:50:40 2012 by Calc Open-Cased 090629
 Charted by: Depth in Feet scaled 1:240

0	GAMMA RAY (GAPI)	150	ABHV	0.2	GUARD (Ohm-m)	2000
-100	SP (mV)	100	10 (ft3)	0	NEUTRON (NAPI)	1000
6	CALIPER (in)	16	TBHV			
			0 (ft3)	10		





0	GAMMA RAY (GAPI)	150	ABHV	0.2	GUARD (Ohm-m)	2000
-100	SP (mV)	100	10 (ft3)	0 0	NEUTRON (NAPI)	1000
6	CALIPER (in)	16	TBHV			
			0 (ft3)	10		