



MIDWEST SURVEYS
 LOGGING - PERFORATING - CONSULTING SERVICES
 P.O. Box 68, Osawatomie, KS 66064
 913 / 755 - 2128

GAMMA RAY / NEUTRON / CCL

File No. Company **Bobcat Oilfield Services, Inc.**
 Well **Schendel No. 5-12**
 Field **Paola - Rantoul**

County **Miami** State **Kansas**

Location **4707' FSL & 3473' FEL**
SE-NW/NE-NW

Other Services
 Perforate

Sec. 24 Twp. 16S Rge. 21E
 Permanent Datum GL Elevation NA
 Log Measured From GL
 Drilling Measured From GL

Elevation
 K.B. NA
 D.F. NA
 G.L. NA

API # 15-121-29,086

Date	05-31-2012
Run Number	One
Depth Difer	720.0
Depth Logger	711.7
Bottom Logged Interval	710.7
Top Log Interval	20.0
Fluid Level	Full
Type Fluid	Water
Density / Viscosity	NA
Salinity - PPM Cl	NA
Max Recorded Temp	NA
Estimated Cement Top	0.0
Equipment No.	107
Location	Osawatomie
Recorded By	Steve Wandsch
Witnessed By	Bob Elberhart

BORE-HOLE RECORD				CASING RECORD			
Run	BIT	FROM	TO	SIZE	WGT.	FROM	TO
One	8.75"	0.0	20.0	6.00"	0.0	0.0	20.0
Two	5.625"	20.0	720.0	2.875"	0.0	0.0	715.0

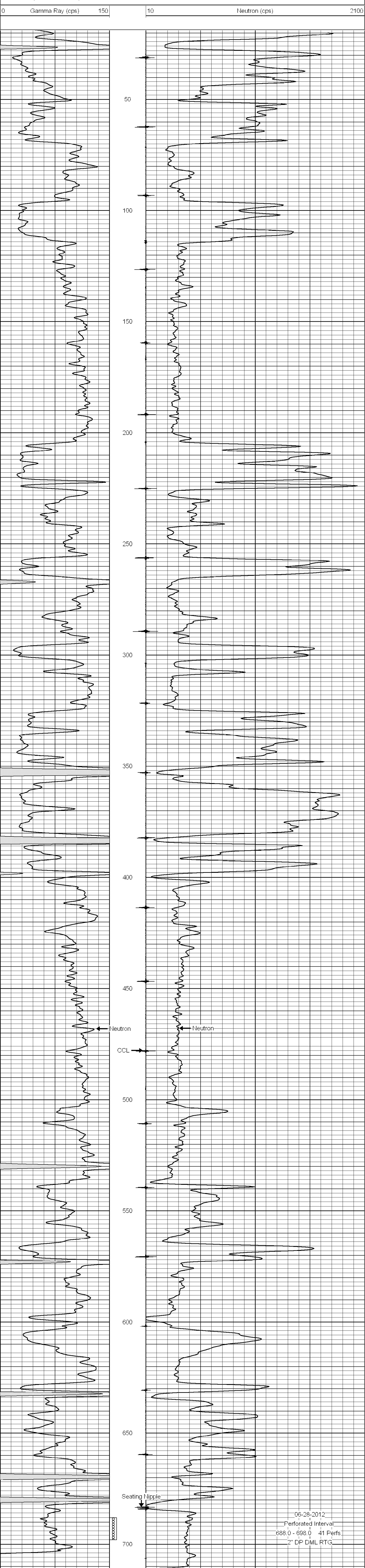
<<< Fold Here >>>

All interpretations are opinions based on inferences from electrical or other measurements and we cannot and do not guarantee the accuracy or correctness of any interpretation, and we shall not, except in the case of gross or willful negligence on our part, be liable or responsible for any loss, costs, damages, or expenses incurred or sustained by anyone resulting from any interpretation made by any of our officers, agents or employees. These interpretations are also subject to our general terms and conditions set out in our current Price Schedule.

Comments

Drilling Contractor :
 Dale Jackson Production Company

Database File: schendel5-12.db
 Dataset Pathname: pass1
 Presentation Format: gr-n-ccl
 Dataset Creation: Thu May 31 15:08:07 2012 by Log SCH 111116
 Charted by: Depth in Feet scaled 1:240



06-28-2012
 Perforated Interval
 688.0 - 698.0 41 Perfs.
 2" DP DML RTG