



MIDWEST SURVEYS
 LOGGING - PERFORATING - CONSULTING SERVICES
 P.O. Box 68, Osawatomie, KS 66064
 913 / 755 - 2128

GAMMA RAY / NEUTRON / CCL

File No. Company Bobcat Oilfield Services, Inc.
 Well Schendel No. 8-12
 Field Paola / Rantoul
 County Miami State Kansas

Location 4250' FSL & 3640' FEL
 SW-SW-NE-N1W
 Sec. 24 Twp. 16S Rge. 21E
 Permanent Datum GL Elevation NA
 Log Measured From GL
 Drilling Measured From GL

Date 08-11-2012
 Run Number One
 Depth Diller 720.0
 Depth Logger 708.0
 Bottom Logged Interval 708.0
 Top Log Interval 20.0
 Fluid Level Full

Run	BIT	FROM	TO	SIZE	WGT.	FROM	TO
One	8.75"	0.0	20.0	6.00"		0.0	20.0
Two	5.625"	20.0	720.0	2.875"		0.0	710.0

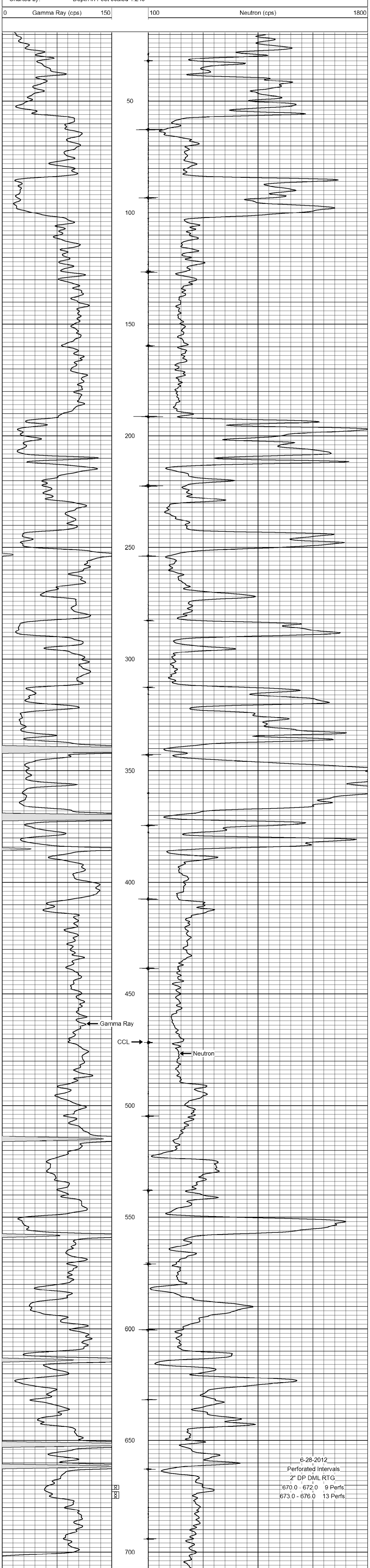
<<< Fold Here >>>

All interpretations are opinions based on inferences from electrical or other measurements and we cannot and do not guarantee the accuracy or correctness of any interpretation, and we shall not, except in the case of gross or willful negligence on our part, be liable or responsible for any loss, costs, damages, or expenses incurred or sustained by anyone resulting from any interpretation made by any of our officers, agents or employees. These interpretations are also subject to our general terms and conditions set out in our current Price Schedule.

Comments

Drilling Contractor :
 Dale Jackson Production Company

Database File: schendel8-12.db
 Dataset Pathname: pass1
 Presentation Format: gr-n-ccl
 Dataset Creation: Mon Jun 11 13:55:28 2012 by Log SCH 111116
 Charted by: Depth in Feet scaled 1:240



6-28-2012
 Perforated Intervals
 2" DP DML RTG
 670.0 - 672.0 9 Perfs
 673.0 - 676.0 13 Perfs