



MIDWEST SURVEYS
 LOGGING - PERFORATING - CONSULTING SERVICES
 P.O. Box 68, Osawatomie, KS 68064
 913.755-2128

GAMMA RAY / NEUTRON / CCL

File No.

Company **Bobcat Oilfield Services, Inc.**

Well **Schendel No. 15-12**

Field **Paola - Rantoul**

County **Miami** State **Kansas**

Location **2805' FSL & 2900' FEL**

Other Services
Perforate

Sec. **24** Twp. **16S** Rge. **21E**

Permanent Datum **GL** Elevation **NA**

Log Measured From **GL**

Drilling Measured From **GL**

Elevation
 K.B. NA
 D.F. NA
 G.L. NA

Date **09-12-2012**

Run Number **One**

Depth Diller **700.0**

Depth Logger **689.0**

Bottom Logged Interval **688.0**

Top Log Interval **20.0**

Fluid Level **Full**

Type Fluid **Water**

Density / Viscosity **NA**

Salinity - PPM Cl **NA**

Max. Recorded Temp **NA**

Estimated Cement Top **0.0**

Equipment No. **107** Location **Osawatomie**

Recorded By **Steve Winkisch**

Witnessed By **Bob Eberhart**

BORE-HOLE RECORD

CASINGS RECORD

RUN No.	BIT FROM	TO	SIZE	WGHT.	FROM	TO
One	8.75"	20.0	6.00"	0.0	0.0	20.0
Two	5.625"	20.0	2.875"	0.0	0.0	690.0

BORE-HOLE RECORD	CASINGS RECORD
TO	TO
FROM	FROM
SIZE	WGHT.
WGHT.	FROM
FROM	TO
TO	TO

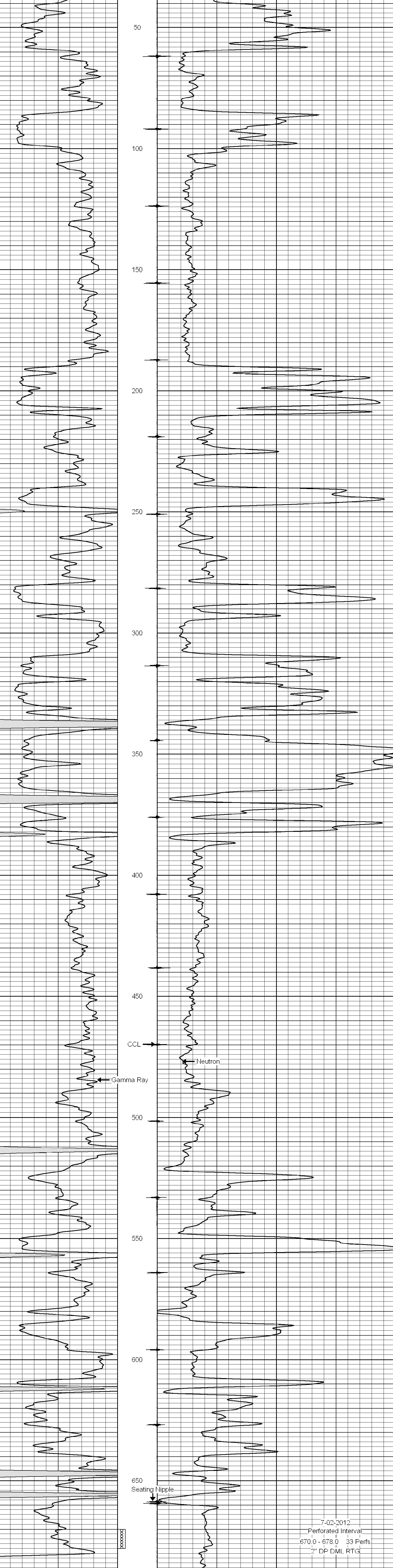
<<< Fold Here >>>

All interpretations are opinions based on inferences from electrical or other measurements and we cannot and do not guarantee the accuracy or correctness of any interpretation, and we shall not, except in the case of gross or willful negligence on our part, be liable or responsible for any loss, costs, damages, or expenses incurred or sustained by anyone resulting from any interpretation made by any of our officers, agents or employees. These interpretations are also subject to our general terms and conditions set out in our current Price Schedule.

Comments

Drilling Contractor :
 Dale Jackson Production Company

Database File: schendel15-12.db
 Dataset Pathname: pass1
 Presentation Format: gr-n-ccl
 Dataset Creation: Tue Jun 12 13:24:51 2012 by Log SCH 111116
 Charted by: Depth in Feet scaled 1:240



7-02-2012
 Perforated Interval
 670.0 - 678.0 33 Perfs.
 2" DP DML RTG