



MIDWEST SURVEYS
 LOGGING - PERFORATING - CONSULTING SERVICES
 P.O. Box 68, Osawatomie, KS 66064
 913.755-2128

GAMMA RAY / NEUTRON / CCL

File No.

Company **Bobcat Oilfield Services, Inc.**

Well **Schendel No. 12-12**

Field **Paola / Rantoul**

County **Miami** State **Kansas**

Location **3465' FSL & 3350' FEL
SE-NW-SE-NW**

Sec. **24** Twp. **16s** Rge. **21e**

Permanent Datum **GL** Elevation **NA**

Log Measured From **GL** Elevation **KB NA
DF NA
GL NA**

Drilling Measured From **GL** Elevation **GL NA**

Date **08-11-2012**

Run Number **One**

Depth Diller **693.0**

Depth Logger **687.8**

Bottom Logged Interval **688.8**

Top Log Interval **20.0**

Fluid Level **Full**

Type Fluid **Water**

Density / Viscosity **NA**

Salinity - PPM Cl **NA**

Max Recorded Temp **NA**

Estimated Cement Top **0.0**

Equipment No **104** Location **Osawatomie**

Recorded By **Gary Windsch**

Witnessed By **Bob Ebenhart**

BORE-HOLE RECORD		CASING RECORD	
RUN No.	BIT FROM TO	SIZE	WGT.
One	8.75" 0.0 20.0	6.00"	0.0
Two	5.625" 20.0 693.0	2.875"	0.0

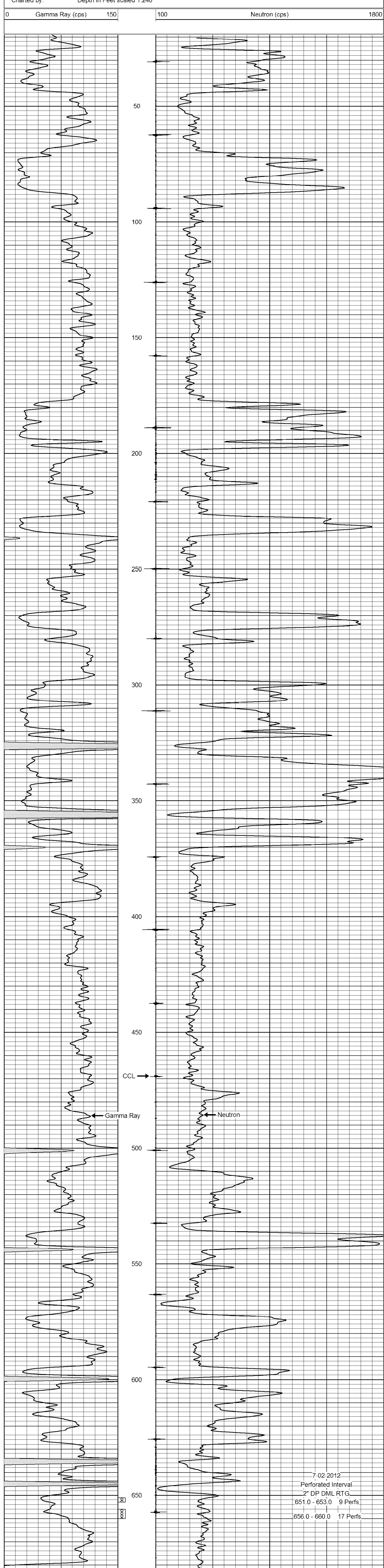
<<< Fold Here >>>

All interpretations are opinions based on inferences from electrical or other measurements and we cannot and do not guarantee the accuracy or correctness of any interpretation, and we shall not, except in the case of gross or willful negligence on our part, be liable or responsible for any loss, costs, damages, or expenses incurred or sustained by anyone resulting from any interpretation made by any of our officers, agents or employees. These interpretations are also subject to our general terms and conditions set out in our current Price Schedule.

Comments

Drilling Contractor :
 Dale Jackson Production Company

Database File: schendel12-12.db
 Dataset Pathname: pass1
 Presentation Format: gr-n-ccl
 Dataset Creation: Mon Jun 11 16:06:31 2012 by Log SCH 111116
 Charted by: Depth in Feet scaled 1:240



7-02-2012
 Perforated Interval
 2" DP DML RTG
 651.0 - 653.0 9 Perfs
 656.0 - 660.0 17 Perfs