



MIDWEST SURVEYS
 LOGGING - PERFORATING - CONSULTING SERVICES
 P.O. Box 68, Osawatomie, KS 66064
 913.755.2128

GAMMA RAY / NEUTRON / CCL

File No.

Company **Bobcat Oilfield Services, Inc.**

Well **Schendel No. 11-12**

Field **Paola / Rantoul**

County **Miami** State **Kansas**

Location **3490' FSL & 3780' FEL
 SW-NW-SE-NW**

Other Services
Perforate

API # 15-121-29,092

Sac. 24 Twp. 16s Rge. 21e

Permanent Datum GL Elevation NA

Log Measured From GL

Drilling Measured From GL

Elevation
 KB NA
 DF NA
 GL NA

Date 08-11-2012

Run Number One

Depth Driller 695.0

Depth Logger 684.0

Bottom Logged Interval 683.0

Top Log Interval 20.0

Fluid Level Full

Type Fluid Water

Density / Viscosity NA

Salinity - PPM Cl NA

Max Recorded Temp NA

Estimated Cement Top 0.0

Equipment No 104 Location Osawatimie

Recorded By Gary Windsch

Witnessed By Bob Ebenhart

BORE-HOLE RECORD

CASING RECORD

NO	BIT	FROM	TO	SIZE	WGT.	FROM	TO
One	8.75"	0.0	20.0	6.00"	0.0	0.0	20.0
Two	5.625"	20.0	695.0	2.875"	0.0	0.0	687.0

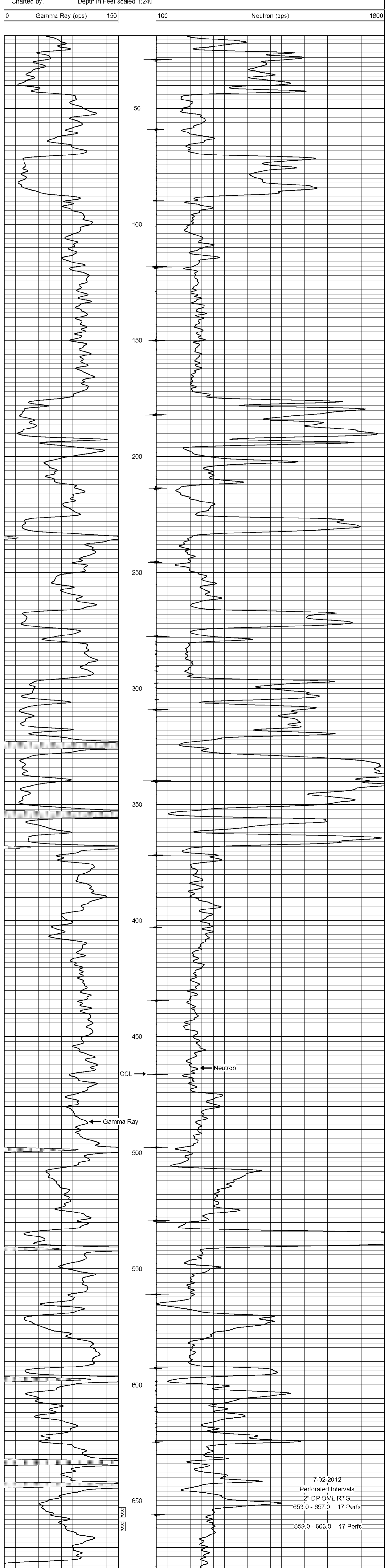
<<< Fold Here >>>

All interpretations are opinions based on inferences from electrical or other measurements and we cannot and do not guarantee the accuracy or correctness of any interpretation, and we shall not, except in the case of gross or willful negligence on our part, be liable or responsible for any loss, costs, damages, or expenses incurred or sustained by anyone resulting from any interpretation made by any of our officers, agents or employees. These interpretations are also subject to our general terms and conditions set out in our current Price Schedule.

Comments

Drilling Contractor :
 Dale Jackson Production Company

Database File: schendel11-12.db
 Dataset Pathname: pass1
 Presentation Format: gr-n-ccl
 Dataset Creation: Mon Jun 11 15:36:28 2012 by Log SCH 111116
 Charted by: Depth in Feet scaled 1:240



7-02-2012
 Perforated Intervals
 2" DP DML RTG
 653.0 - 657.0 17 Perfs
 659.0 - 663.0 17 Perfs