



MIDWEST SURVEYS
LOGGING - PERFORATING - CONSULTING SERVICES
P.O. Box 68, Osawatomie, KS 66064
913 / 755 - 2128

GAMMA RAY / NEUTRON / CCL

File No.

Company **RJ Enterprises**

Well **Norman Unit No. 8-N-1**

Field **Davis - Bronson**

County **Allen** State **Kansas**

Location **2317' FSL & 358' FEL
NW-NE-NE-SE**

Other Services
Perforate

Sec. **34** Twp. **23S** Rge. **21E**

Permanent Datum **GL** Elevation **N/A**

Log Measured From **GL**

Drilling Measured From **GL**

Elevation
K.B. **NA**
D.F. **NA**
G.L. **NA**

Date **05-25-2012**

Run Number **One**

Depth Driller **606.0**

Depth Logger **598.2**

Bottom Logged Interval **598.2**

Top Log Interval **20.0**

Fluid Level **Full**

Type Fluid **Water**

Density / Viscosity **NA**

Salinity - PPM Cl **NA**

Max Recorded Temp **NA**

Estimated Cement Top **0.0**

Equipment No. **107** Location **Osawatomie**

Recorded By **Steve Windisch**

Witnessed By **Jason Kent**

RUN

No. **BIT**

FROM **TO**

One **9.875"** **0.0** **20.0** **7.00"** **0.0** **20.0**

Two **5.625"** **20.0** **606.0** **2.875"** **0.0** **598.7**

Size **WGt.**

FROM **TO**

One **9.875"** **0.0** **20.0** **7.00"** **0.0** **20.0**

Two **5.625"** **20.0** **606.0** **2.875"** **0.0** **598.7**

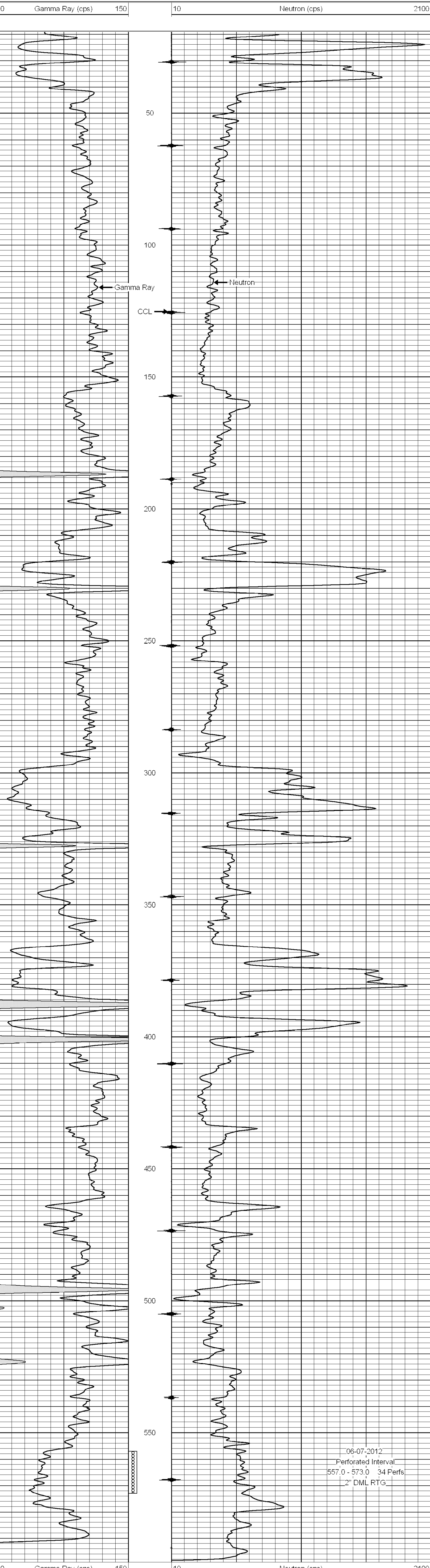
<<< Fold Here >>>

All interpretations are opinions based on inferences from electrical or other measurements and we cannot and do not guarantee the accuracy or correctness of any interpretation, and we shall not, except in the case of gross or willful negligence on our part, be liable or responsible for any loss, costs, damages, or expenses incurred or sustained by anyone resulting from any interpretation made by any of our officers, agents or employees. These interpretations are also subject to our general terms and conditions set out in our current Price Schedule.

Comments

Drilling Contractor :
RJ Enterprises

Database File: norman8in.db
Dataset Pathname: pass1
Presentation Format: gr-n-ccl
Dataset Creation: Fri May 25 14:35:37 2012 by Log SCH 111116
Charted by: Depth in Feet scaled 1:240



06-07-2012
Perforated Interval
557.0 - 573.0 34 Perfs.
2" DML RTG