



MIDWEST SURVEYS
 LOGGING - PERFORATING - CONSULTING SERVICES
 P.O. Box 66, Osawatomie, KS 66064
 913 / 755 - 2128

GAMMA RAY / NEUTRON / CCL

File No.

Company **RJ Enterprises**

Well **Rife No. 7-A**

Field **Davis / Bronson**

County **Allen** State **Kansas**

Location **5067' FSL & 4849' FEL**

Location **NE-NW-NW-NW**

Other Services
Perforate

Sec-34
 Permanent Datum
 Log Measured From
 Drilling Measured From

Typ. 23s Rge. 21e

CL
 GL
 GL

Elevation
 NA
 NA
 NA

Date
 Run Number
 Depth Diller
 Depth Logger
 Bottom Logged Interval
 Top Log Interval
 Fluid Level

06-29-2012
 One
 766.0
 760.0
 759.0
 20.0
 Fill

Type Fluid
 Density / Viscosity
 Salinity - PPM Cl
 Max Recorded Temp
 Estimated Cement Top
 Equipment No.
 Location
 Recorded By
 Witnessed By

Water
 NA
 NA
 NA
 0.0
 104
 Osawatomie
 Gary Wlndsch
 Jason Kent

BORE-HOLE RECORD
 RUN No. BIT FROM TO SIZE WGT. FROM TO

One 9.875" 20.0 7.00" 20.0 20.0
 Two 5.625" 20.0 7.89.0 2.875" 0.0 760.0

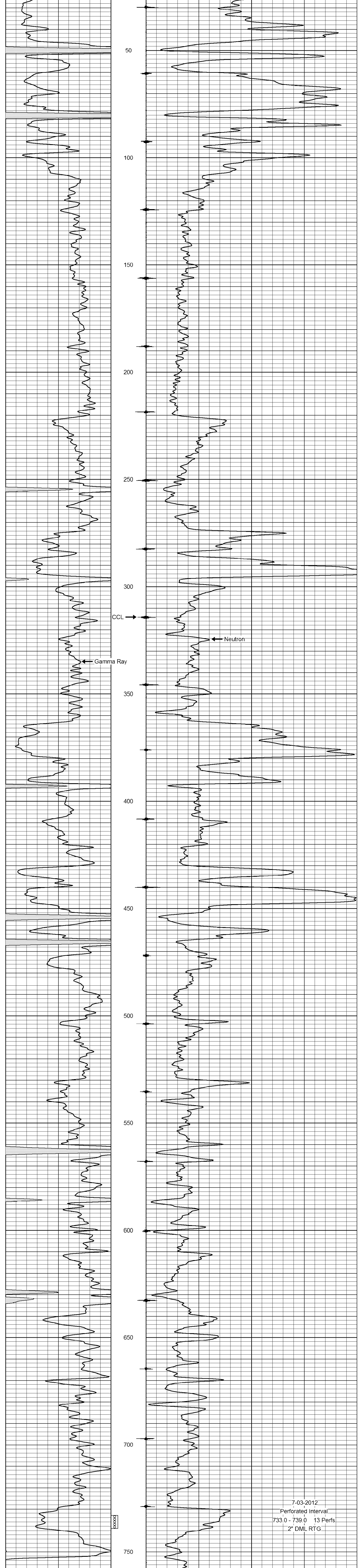
<<< Fold Here >>>

All interpretations are opinions based on inferences from electrical or other measurements and we cannot and do not guarantee the accuracy or correctness of any interpretation, and we shall not, except in the case of gross or willful negligence on our part, be liable or responsible for any loss, costs, damages, or expenses incurred or sustained by anyone resulting from any interpretation made by any of our officers, agents or employees. These interpretations are also subject to our general terms and conditions set out in our current Price Schedule.

Comments

Drilling Contractor :
 RJ Enterprises

Database File: rife7a.db
 Dataset Pathname: pass1
 Presentation Format: gr-n-ccl
 Dataset Creation: Fri Jun 29 14:34:25 2012 by Log SCH 111116
 Charted by: Depth in Feet scaled 1:240



7-03-2012
 Perforated Interval
 733.0 - 739.0 13 Perfs
 2" DML RTG