



**SUPERIOR**  
Hays,  
Kansas

**MICRO**  
LOG  
(TIGHT HOLE)

Company NEW GULF OPERATING, LLC.  
Well A.C. FELT #1  
Field WILD CAT  
County SCOTT  
State KANSAS

Company NEW GULF OPERATING, LLC.  
Well A.C. FELT #1  
Field WILD CAT  
County SCOTT State KANSAS

Location: API # : 15-171-20878-0000  
2523' FNL & 2621' FEL  
SEC 6 TWP 18S RGE 34W  
Permanent Datum GROUND LEVEL Elevation 3154  
Log Measured From KELLY BUSHING 10' A.G.L.  
Drilling Measured From KELLY BUSHING  
Other Services  
CDL/CNL/PE  
DIL  
Elevation  
K.B. 3164  
D.F. 3162  
G.L. 3154

Date	5/24/12		
Run Number	TWO		
Depth Driller	5082		
Depth Logger	5086		
Bottom Logged Interval	5084		
Top Log Interval	3500		
Casing Driller	8 5/8"@251'		
Casing Logger	254		
Bit Size	7 7/8"		
Type Fluid in Hole	CHEMICAL MUD	CHLORIDES 7,500 PPM	
Density / Viscosity	9.4/58		
pH / Fluid Loss	10.5/10.8		
Source of Sample	FLOWLINE		
Rm @ Meas. Temp	.900@84F		
Rmt @ Meas. Temp	.675@84F		
Rmc @ Meas. Temp	1.08@84F		
Source of Rmf / Rmc	MEASUREMENT		
Rm @ BHT	.600@126F		
Time Circulation Stopped	5.5 HOURS		
Time Logger on Bottom	1:30 P.M.		
Maximum Recorded Temperature	126F		
Equipment Number	4010		
Location	HAYS, KANSAS		
Recorded By	JEFF LUEBBERS		
Witnessed By	CURTIS COVER	DANNY BIRDWELL	

<<< Fold Here >>>

All interpretations are opinions based on inferences from electrical or other measurements and we cannot and do not guarantee the accuracy or correctness of any interpretation, and we shall not, except in the case of gross or willful negligence on our part, be liable or responsible for any loss, costs, damages, or expenses incurred or sustained by anyone resulting from any interpretation made by any of our officers, agents or employees. These interpretations are also subject to our general terms and conditions set out in our current Price Schedule.

Comments

THANK YOU FOR USING SUPERIOR WELL SERVICE HAYS, KANSAS (785) 628-6395  
DIRECTIONS  
SCOTT CITY, KS. (4 WAY STOP) 12W. ON HWY 96 TO "SCOTT/WICHITA COUNTY LINE", 1 1/2N., 1/2E.  
INTO AND BACK SOUTH

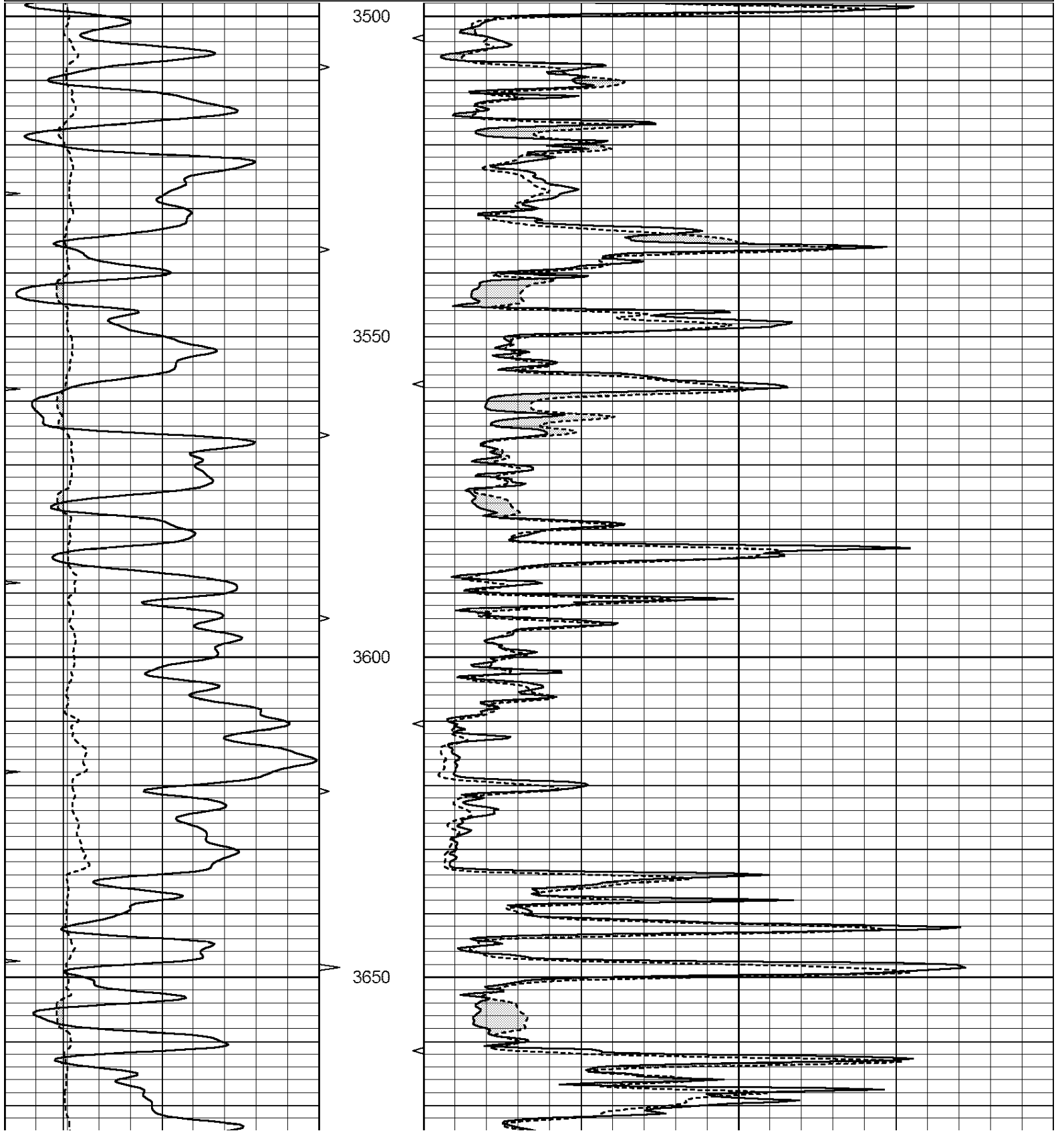


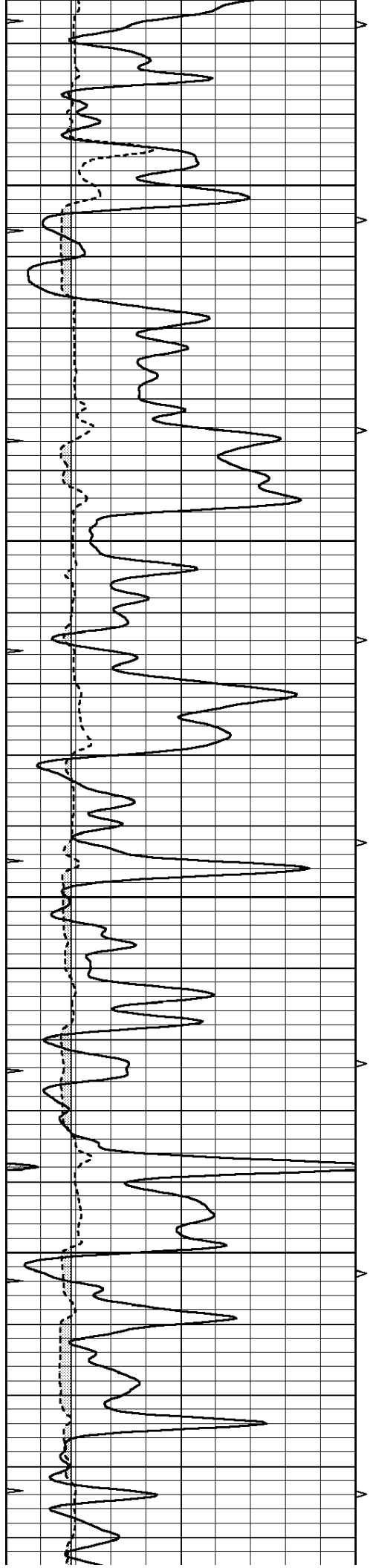
SUPERIOR  
Hays,  
Kansas

**MAIN SECTION**

Database File: 408776pe.db  
 Dataset Pathname: pass6.4  
 Presentation Format: micro  
 Dataset Creation: Thu May 24 17:44:32 2012 by Calc Open-Cased 110302  
 Charted by: Depth in Feet scaled 1:240

0	GAMMA RAY (GAPI)	150	ABHV	0	MEL1.5 (Ohm-m)	40
6	CALIPER (in)	16	10 (ft3)	0	MEL2.0 (Ohm-m)	40
0	MINMK	20	TBHV			
			0 (ft3)	10		



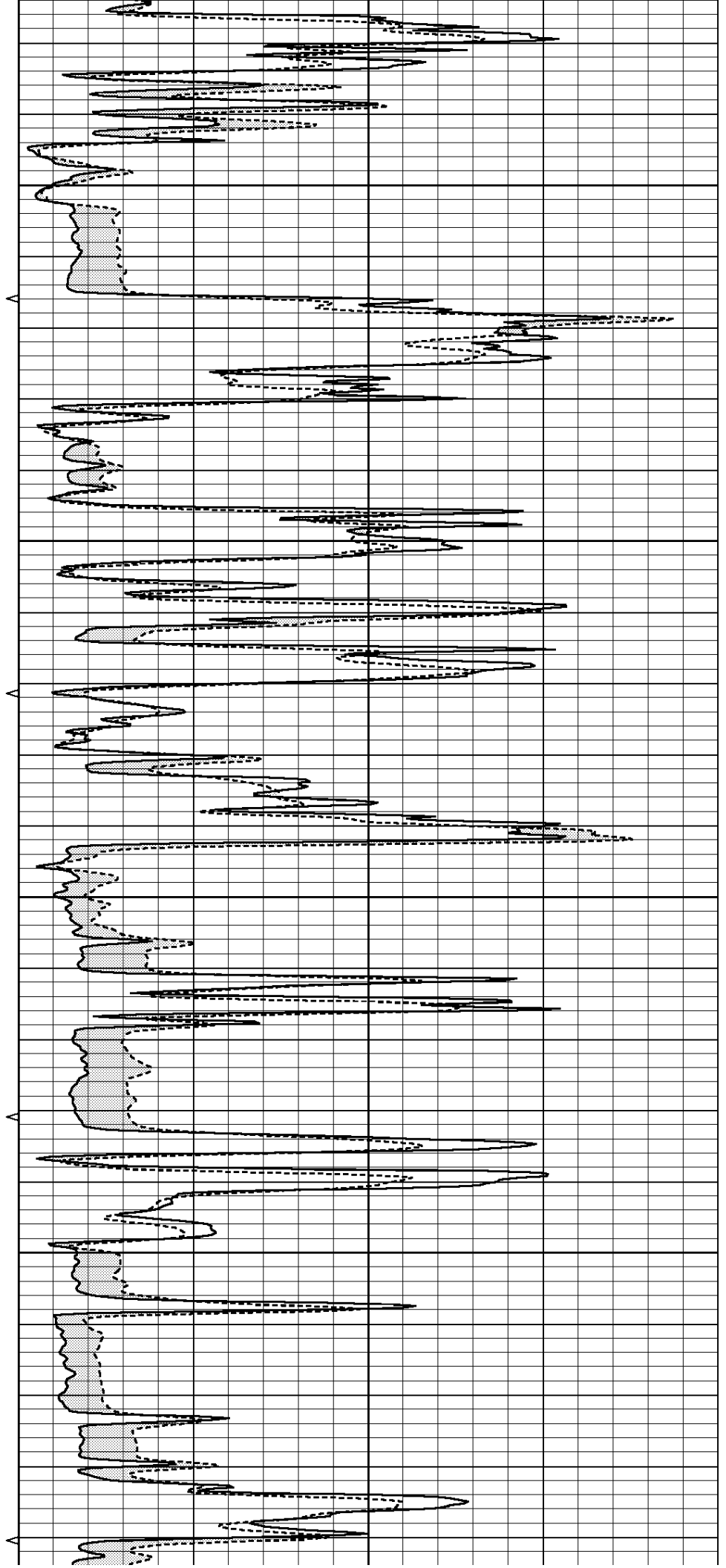


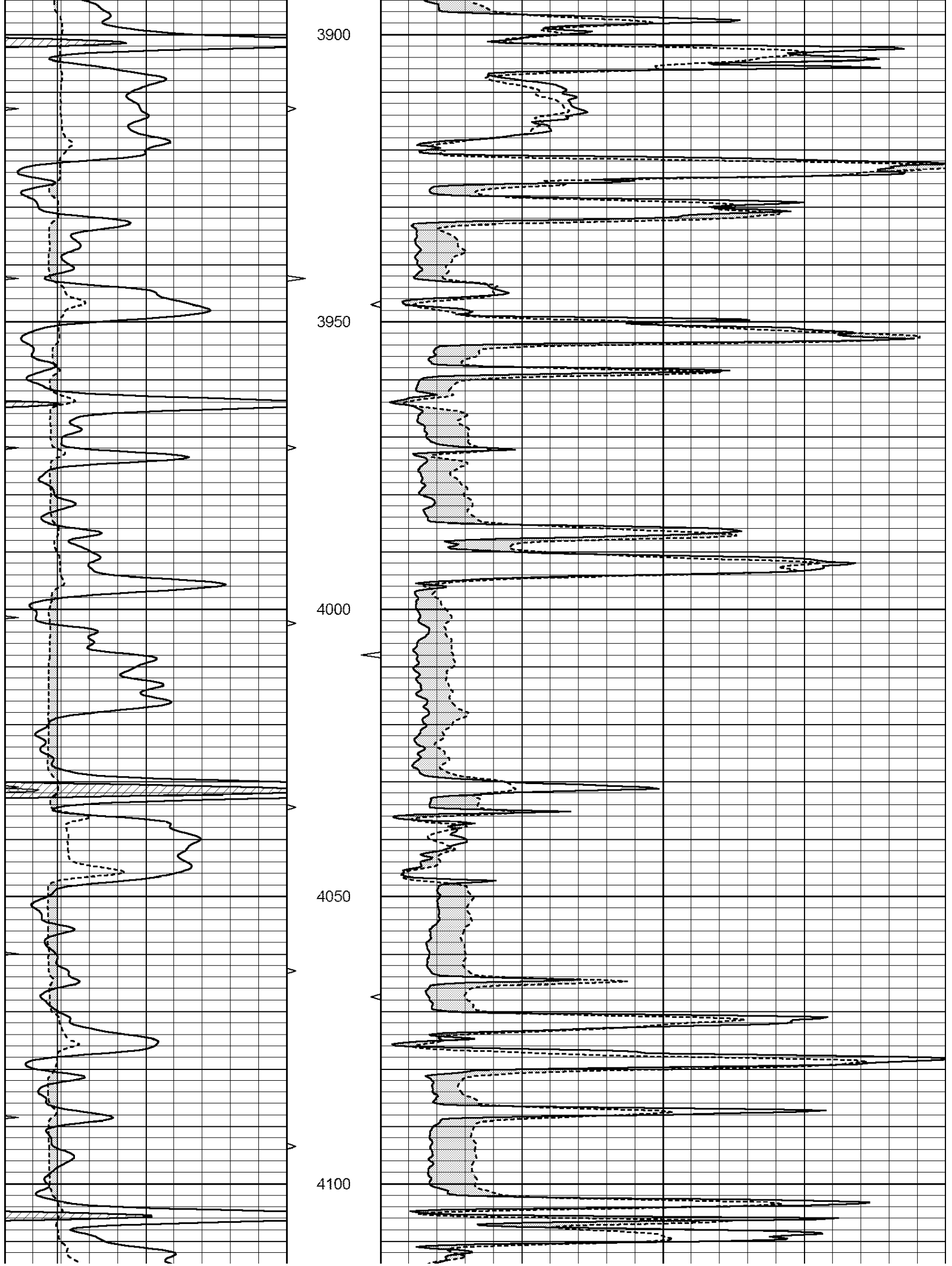
3700

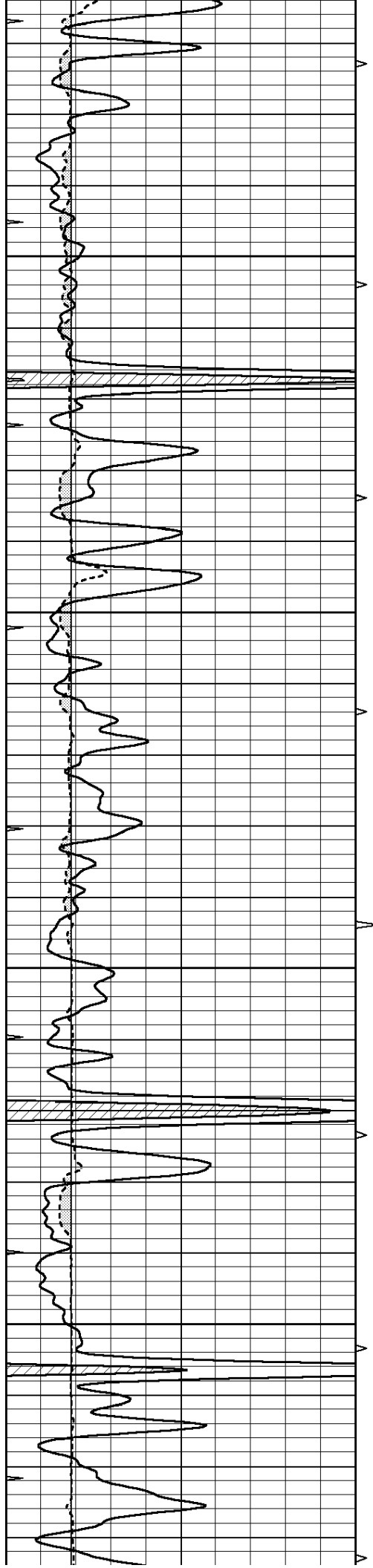
3750

3800

3850





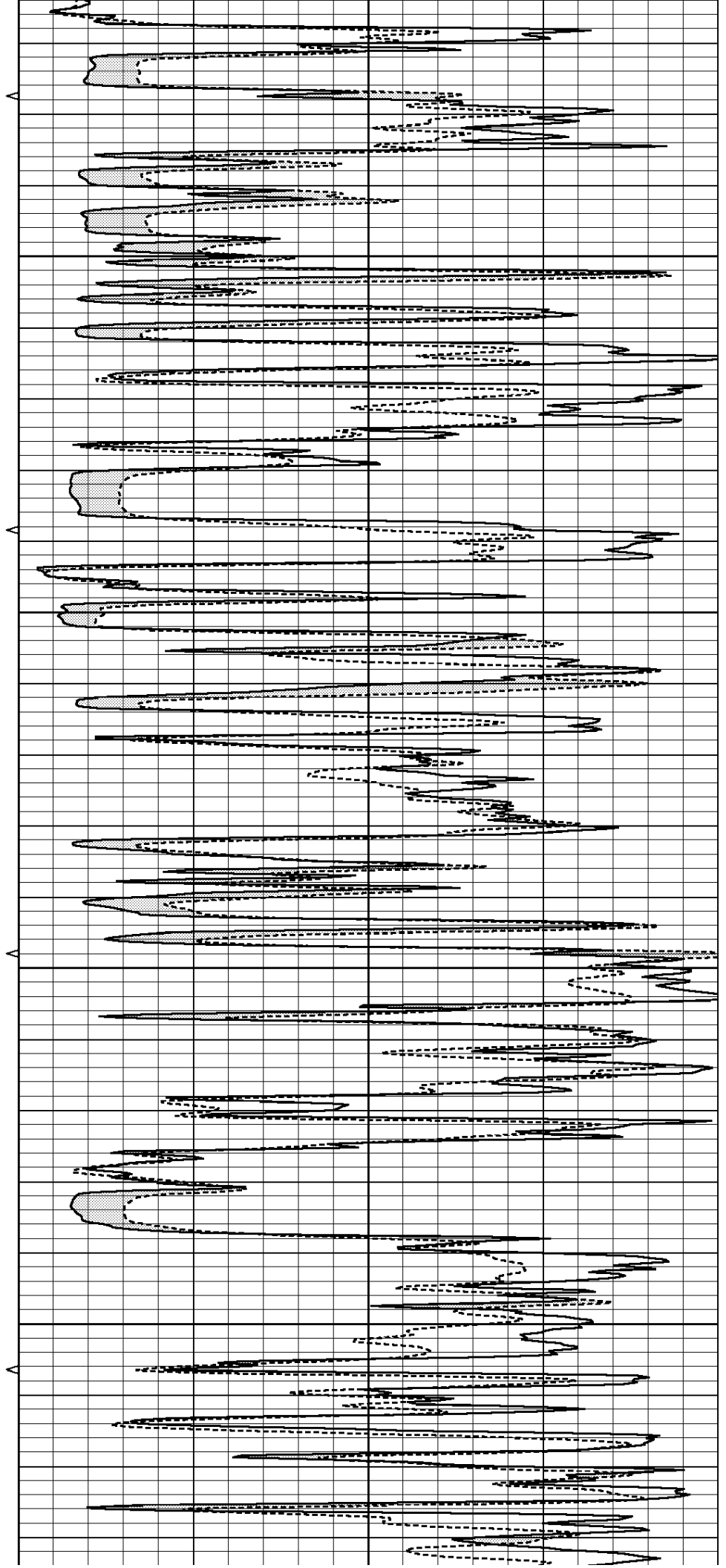


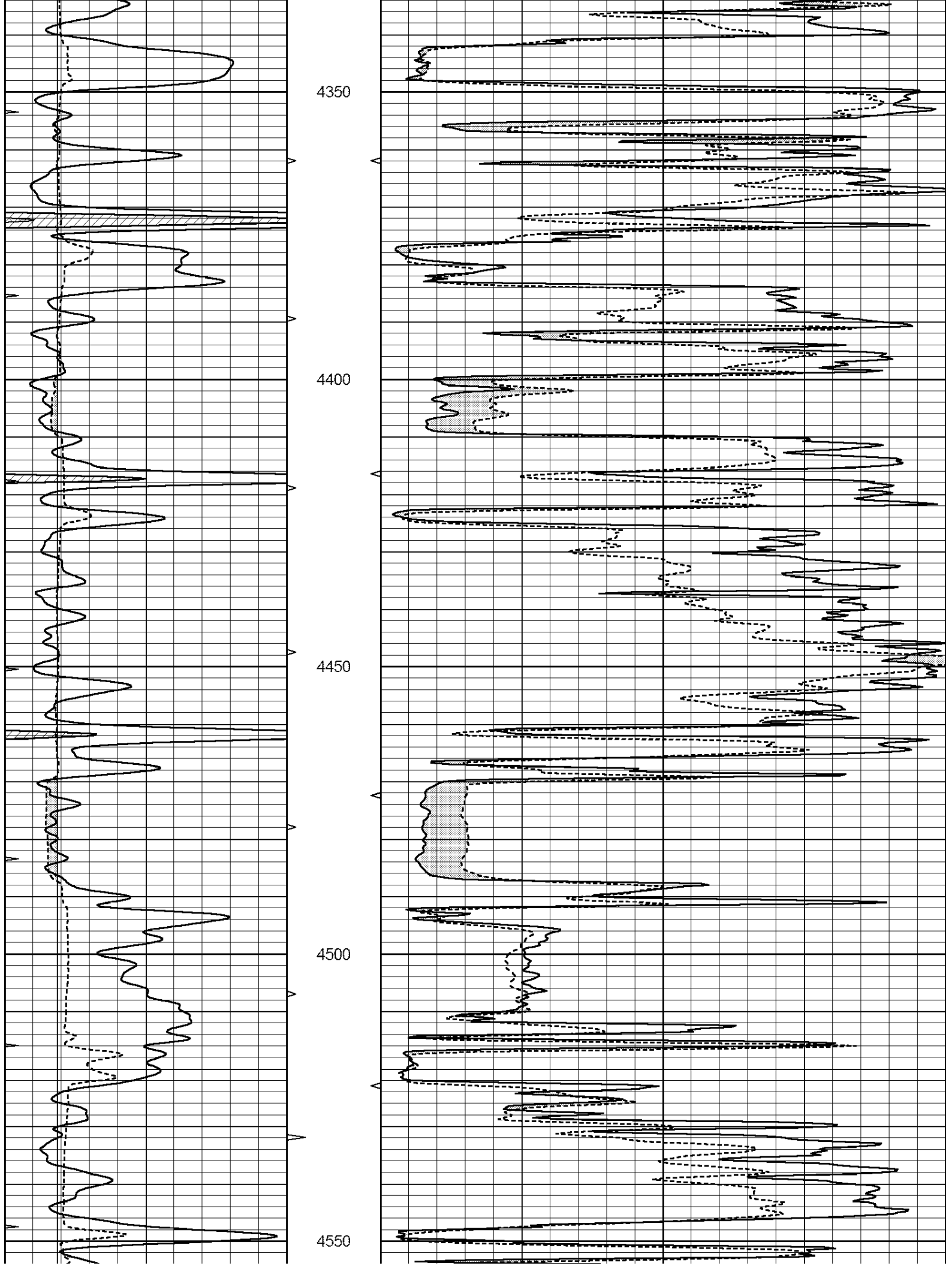
4150

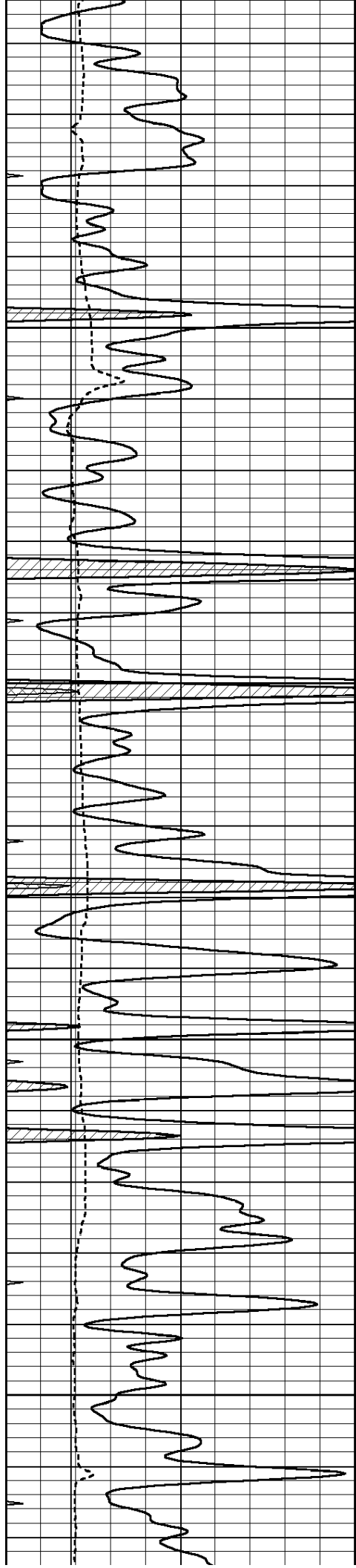
4200

4250

4300





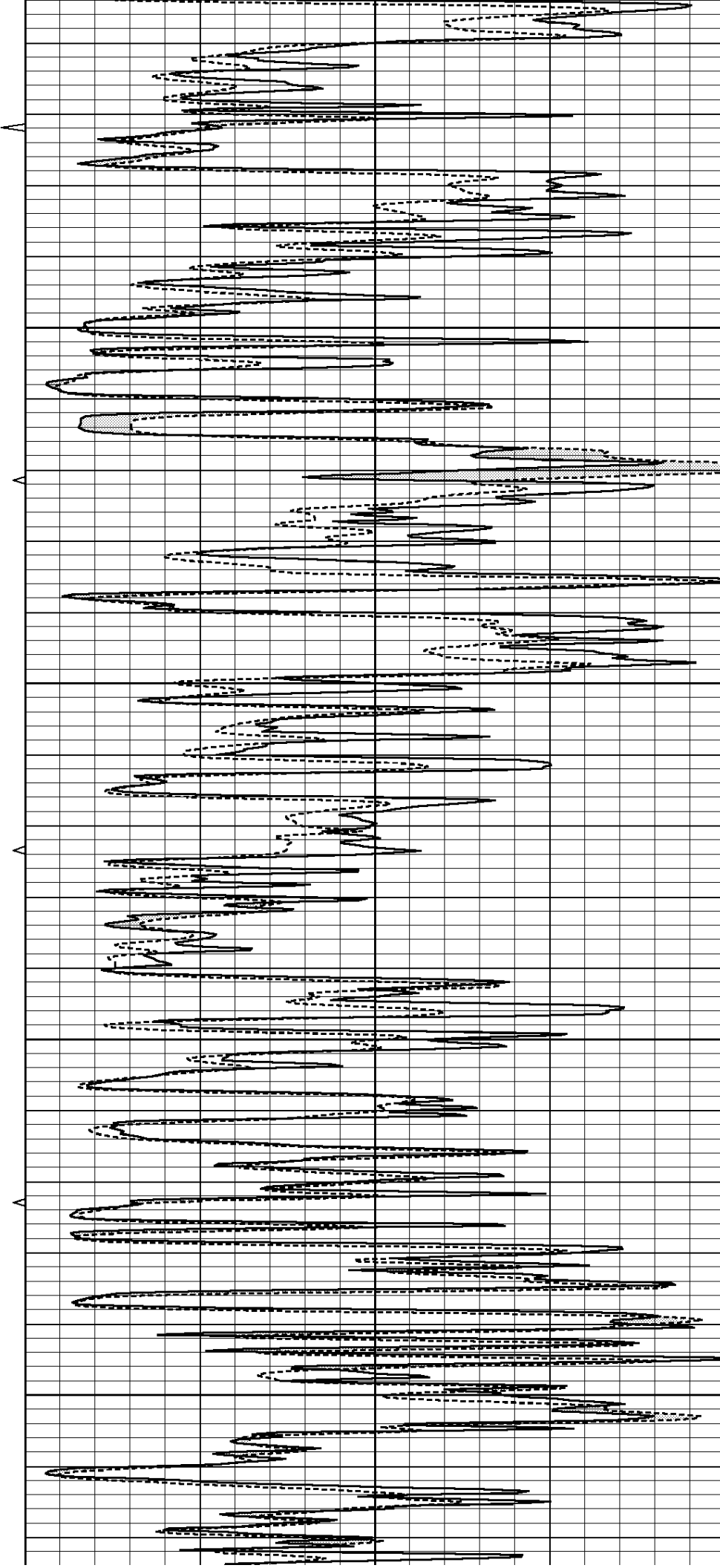


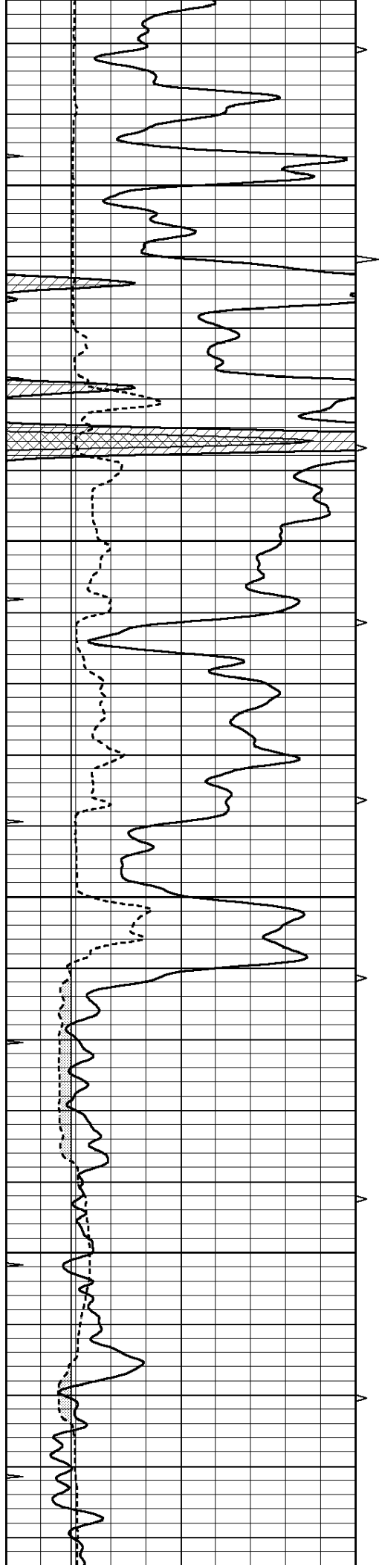
4600

4650

4700

4750



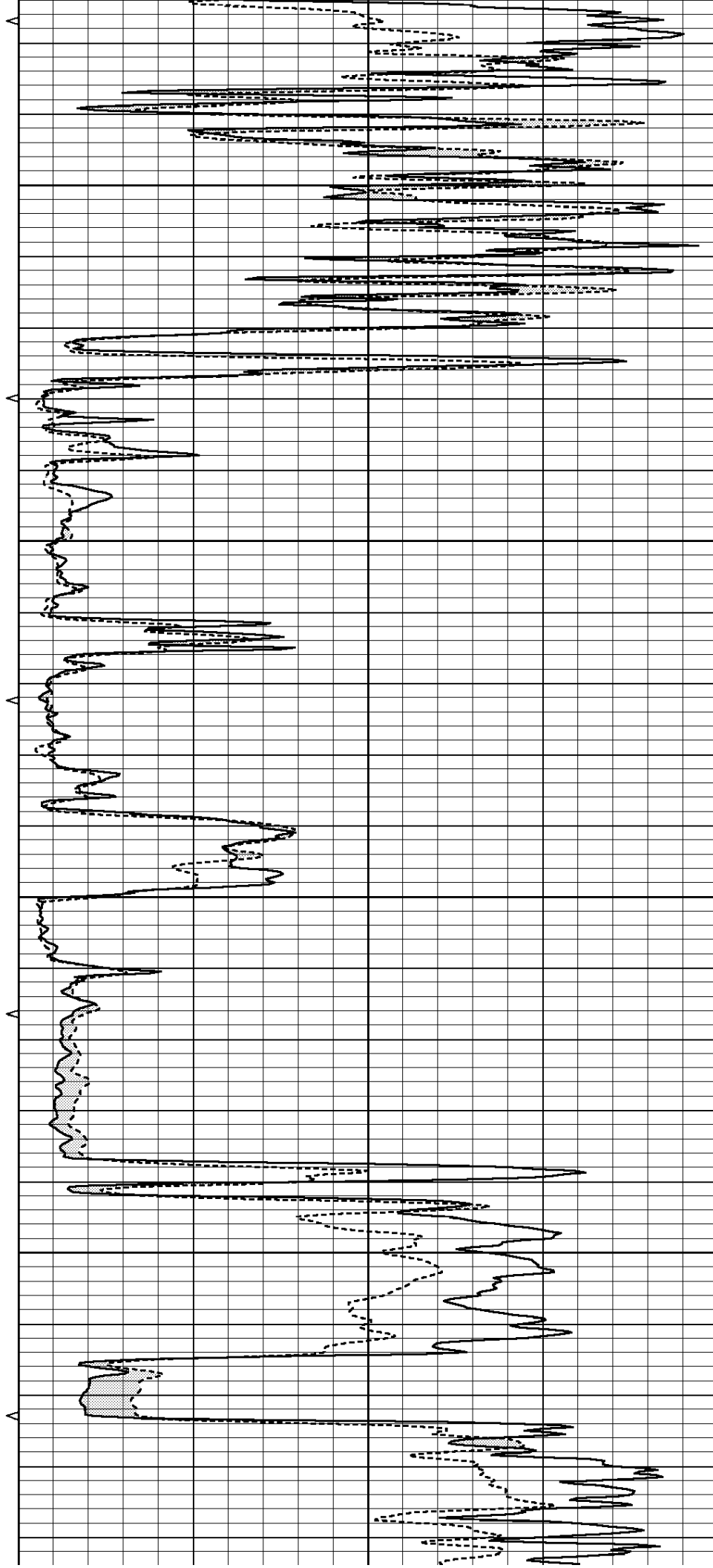


4800

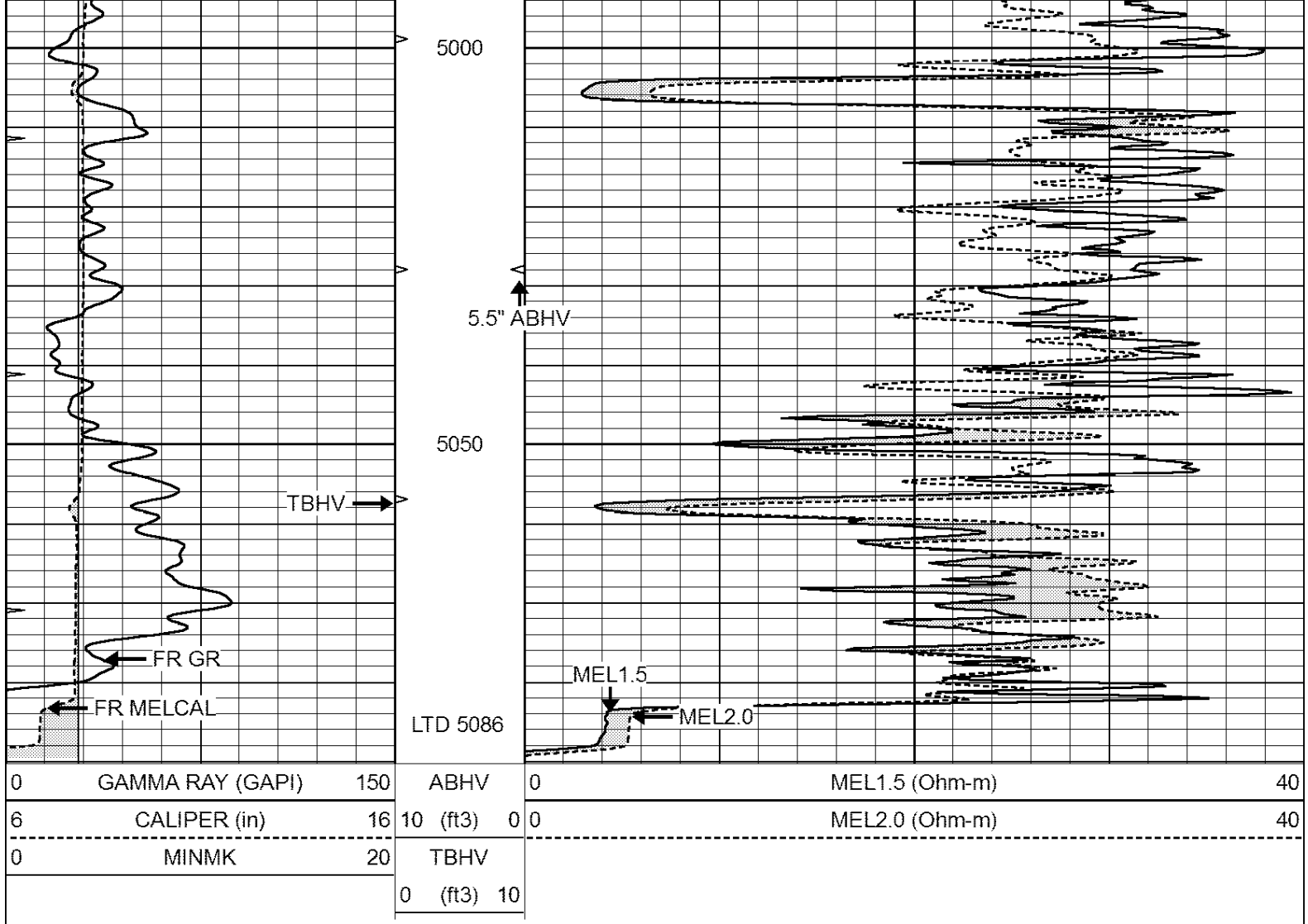
4850

4900

4950





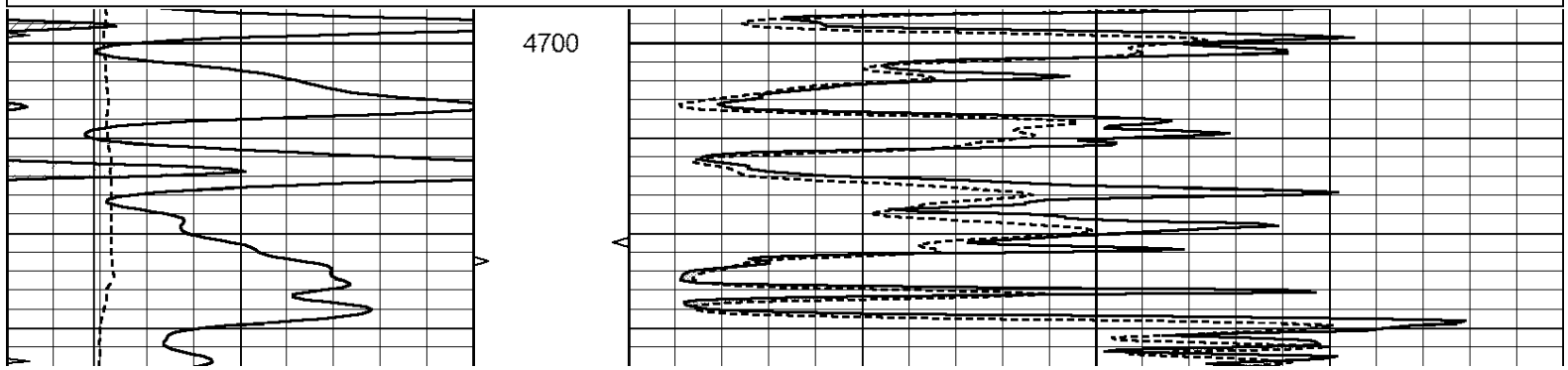


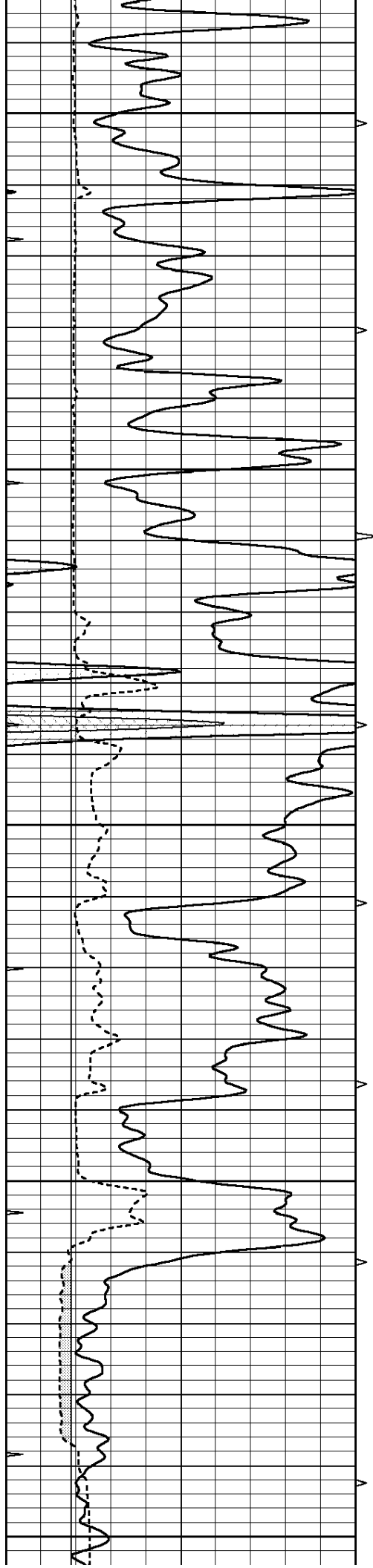
SUPERIOR  
Hays,  
Kansas

# REPEAT SECTION

Database File: 408776pe.db  
 Dataset Pathname: pass5.2  
 Presentation Format: micro  
 Dataset Creation: Thu May 24 16:43:07 2012 by Calc Open-Cased 110302  
 Charted by: Depth in Feet scaled 1:240

0	GAMMA RAY (GAPI)	150	ABHV	0	MEL1.5 (Ohm-m)	40
6	CALIPER (in)	16	10 (ft3)	0	MEL2.0 (Ohm-m)	40
0	MINMK	20	TBHV			
			0 (ft3)	10		





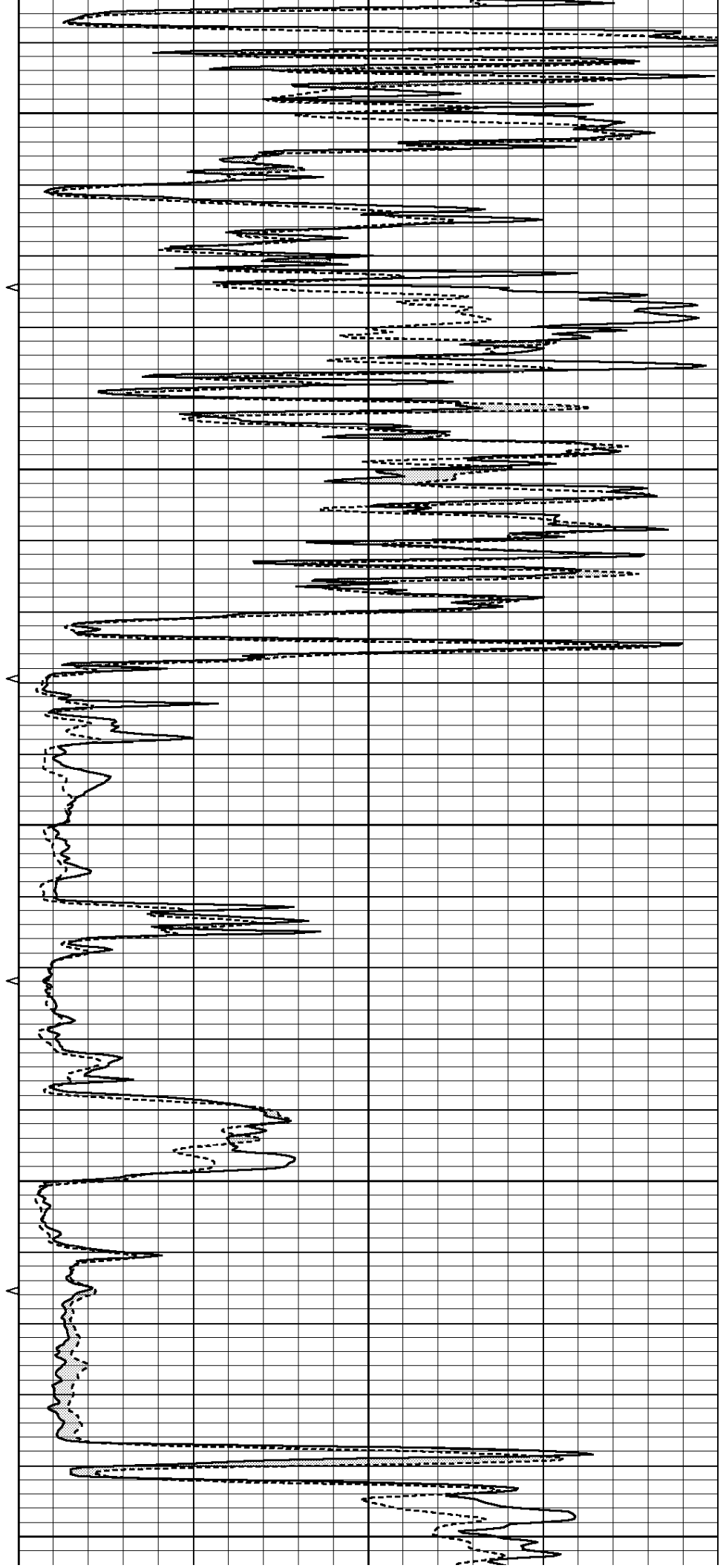
4750

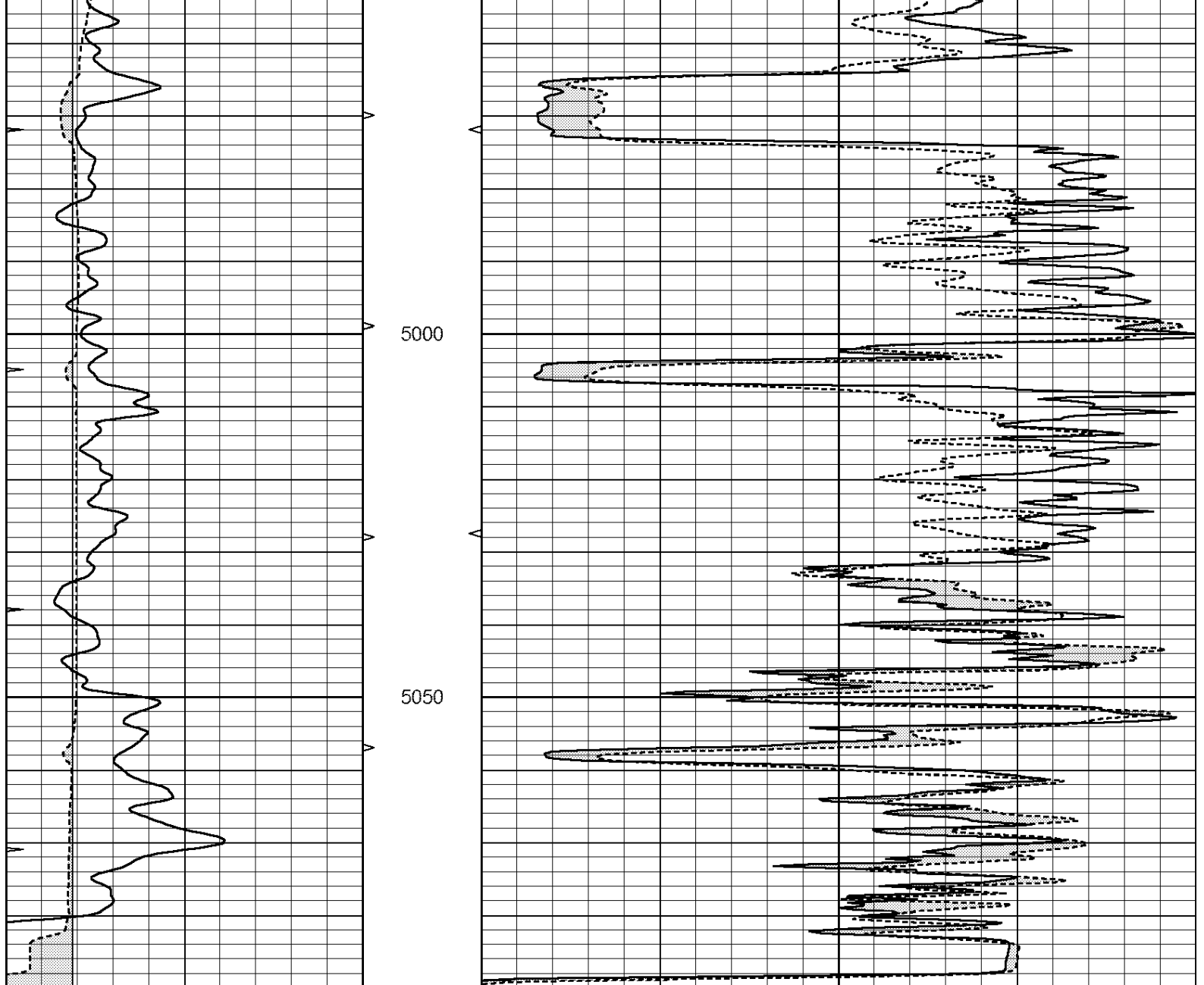
4800

4850

4900

4950





0	GAMMA RAY (GAPI)	150	ABHV	0	MEL1.5 (Ohm-m)	40
6	CALIPER (in)	16	10 (ft3)	0	MEL2.0 (Ohm-m)	40
0	MINMK	20	TBHV			
			0 (ft3)	10		

### Calibration Report

Database File: 408776pe.db  
 Dataset Pathname: pass6.4  
 Dataset Creation: Thu May 24 17:44:32 2012 by Calc Open-Cased 110302

### MICRO Calibration Report

Serial Number:	2	
Tool Model:	PROBE	
Performed:	Wed May 23 04:55:16 2012	
Caliper Calibration:	Gain=4.164	Offset=3.193
References	Low Cal	High Cal
Readings	7.900	15.000
	1.130	2.835
1.5" Calibration:	Gain=25.000	Offset=-0.700

	Low Cal	High Cal
References	0.000	20.000
Readings	0.065	1.210

2" Calibration:	Gain=46.000	Offset=-0.500
-----------------	-------------	---------------

	Low Cal	High Cal
References	0.000	20.000
Readings	0.012	1.043

Gamma Ray Calibration Report

Serial Number:	GR4
Tool Model:	OPEN
Performed:	Thu May 24 16:44:18 2012

Calibrator Value:	200.0	GAPI
-------------------	-------	------

Background Reading:	0.0	cps
Calibrator Reading:	189.0	cps

Sensitivity:	1.6000	GAPI/cps
--------------	--------	----------