



SUPERIOR
Hays,
Kansas

**COMPENSATED
DENSITY / NEUTRON
PE LOG
(TIGHT HOLE)**

Company NEW GULF OPERATING, LLC.
Well A.C. FELT #1
Field WILDCAT
County SCOTT
State KANSAS

Company NEW GULF OPERATING, LLC.
Well A.C. FELT #1
Field WILDCAT
County SCOTT State KANSAS

Location: API # : 15-171-20878-0000
2523' FNL & 2621' FEL
SEC 6 TWP 18S RGE 34W
Permanent Datum GROUND LEVEL Elevation 3154
Log Measured From KELLY BUSHING 10' A.G.L.
Drilling Measured From KELLY BUSHING
Other Services DIL/MEL
Elevation
K.B. 3164
D.F. 3162
G.L. 3154

Date	5/24/12	
Run Number	ONE	
Depth Driller	5082	
Depth Logger	5086	
Bottom Logged Interval	5062	
Top Log Interval	3500	
Casing Driller	8 5/8"@251'	
Casing Logger	254	
Bit Size	7 7/8"	
Type Fluid in Hole	CHEMICAL MUD	CHLORIDES 7,500 PPM
Density / Viscosity	9.4/58	
pH / Fluid Loss	10.5/10.8	
Source of Sample	FLOWLINE	
Rm @ Meas. Temp	.900@84F	
Rmt @ Meas. Temp	.675@84F	
Rmc @ Meas. Temp	1.08@84F	
Source of Rmf / Rmc	MEASUREMENT	
Rm @ BHT	.600@126F	
Time Circulation Stopped	3 HOURS	
Time Logger on Bottom	1:30 P.M.	
Maximum Recorded Temperature	126F	
Equipment Number	4010	
Location	HAYS, KANSAS	
Recorded By	JEFF LUEBBERS	
Witnessed By	CURTIS COVEY	DANNY BIRDWELL

<<< Fold Here >>>

All interpretations are opinions based on inferences from electrical or other measurements and we cannot and do not guarantee the accuracy or correctness of any interpretation, and we shall not, except in the case of gross or willful negligence on our part, be liable or responsible for any loss, costs, damages, or expenses incurred or sustained by anyone resulting from any interpretation made by any of our officers, agents or employees. These interpretations are also subject to our general terms and conditions set out in our current Price Schedule.

Comments

THANK YOU FOR USING SUPERIOR WELL SERVICE HAYS, KANSAS (785) 628-6395
DIRECTIONS
SCOTT CITY, KS. (4 WAY STOP) 12W. ON HWY 96 TO "SCOTT/WICHITA COUNTY LINE", 1 1/2N., 1/2E.
INTO AND BACK SOUTH

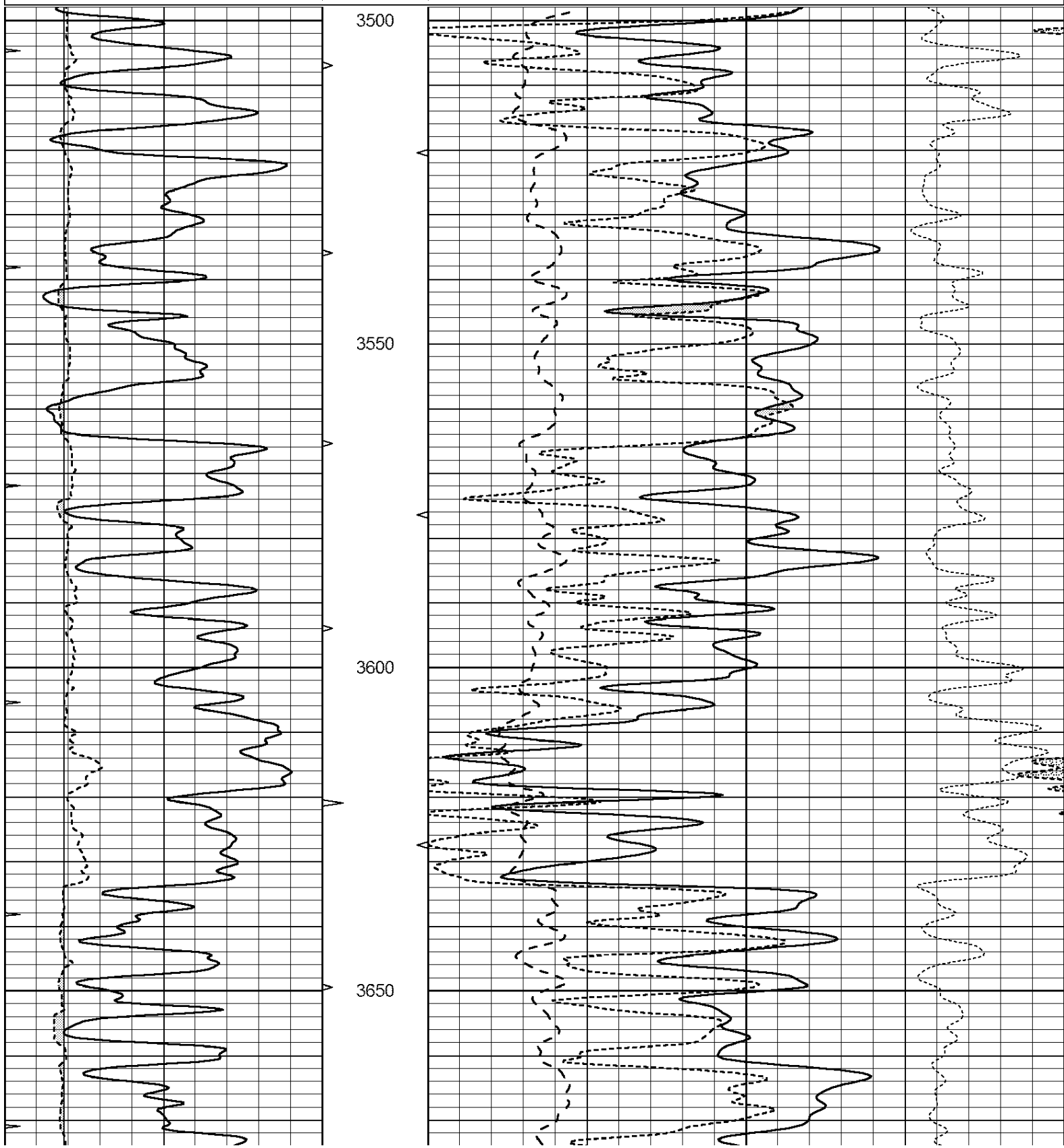


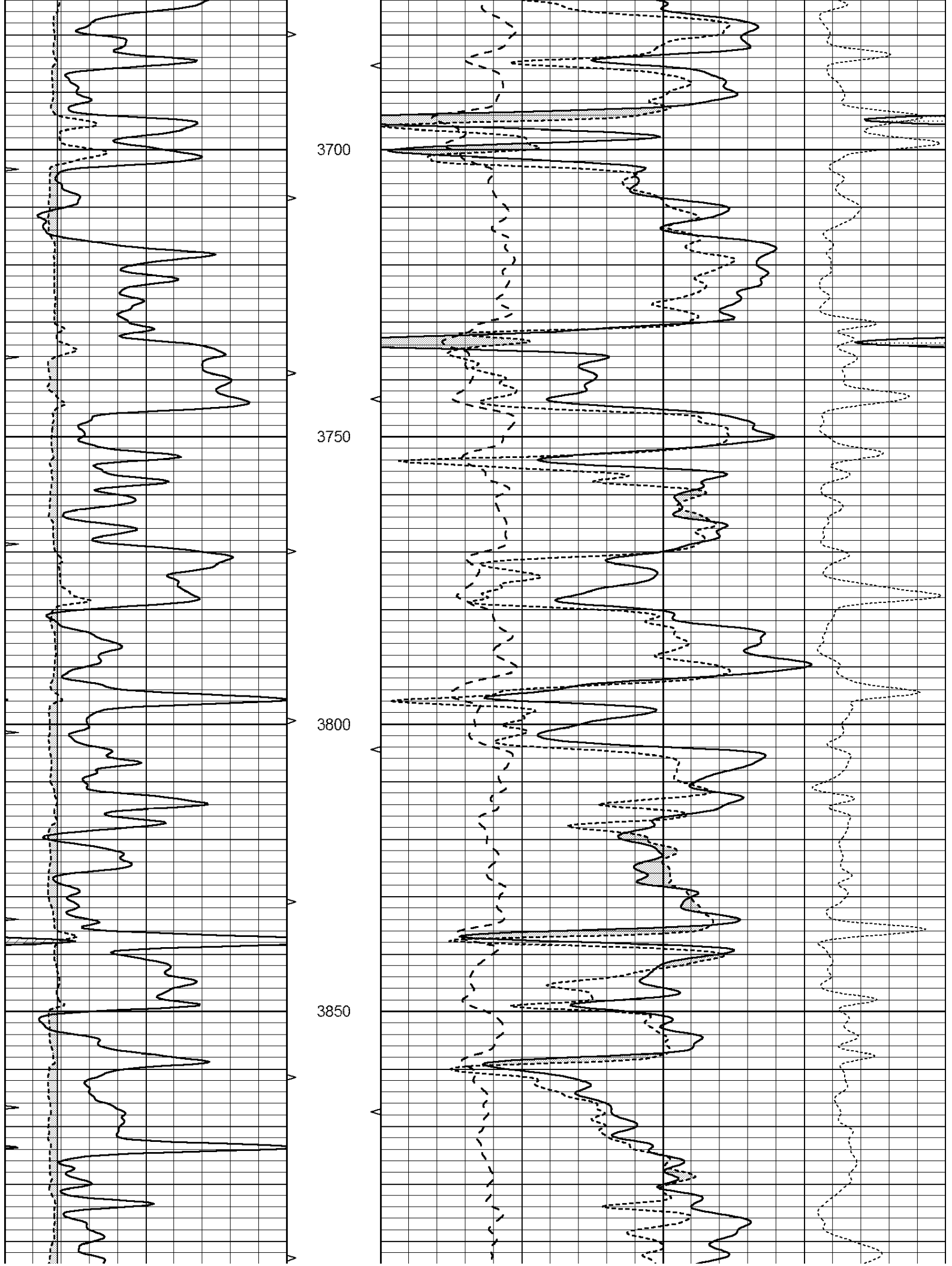
SUPERIOR
Hays,
Kansas

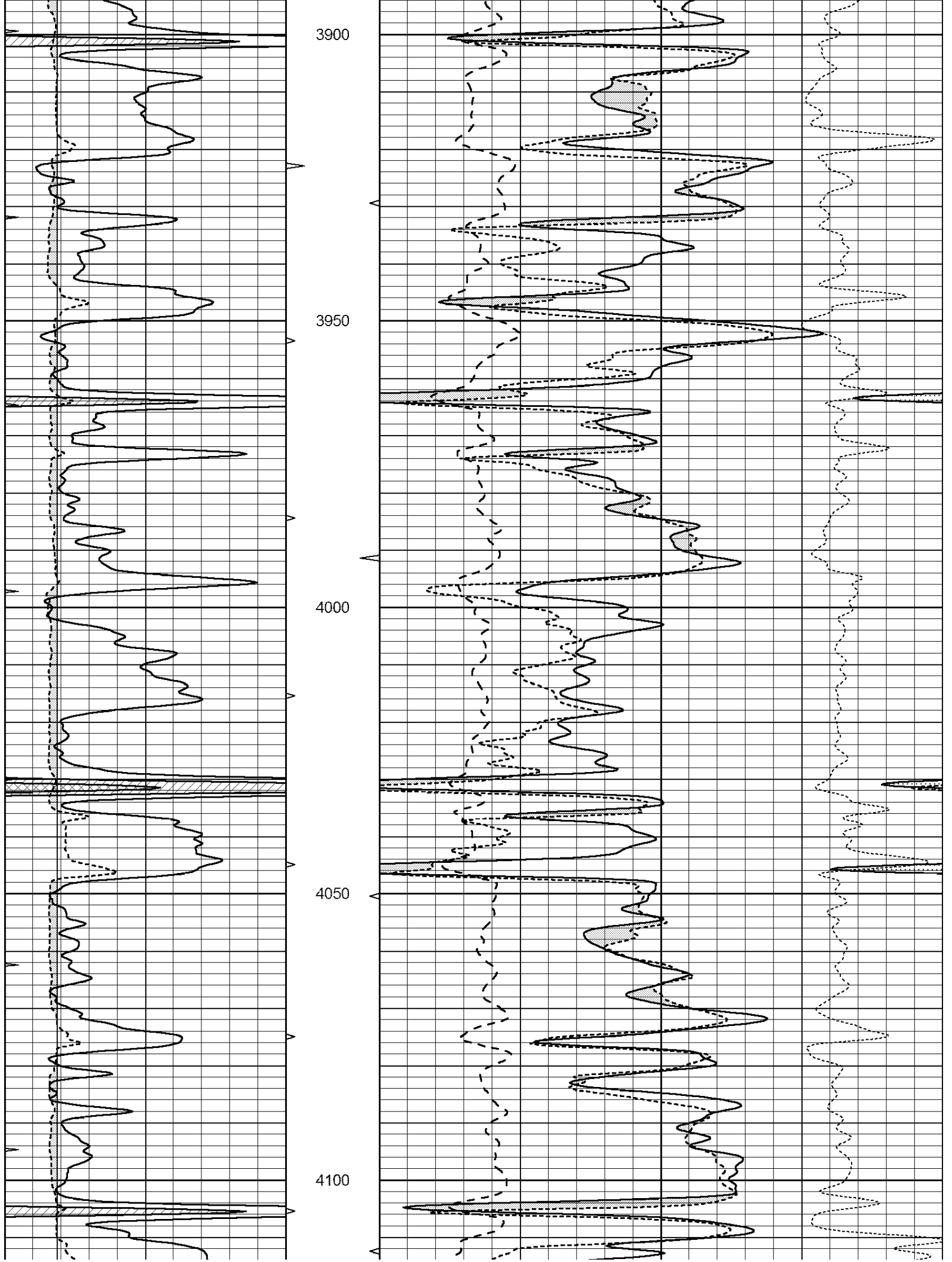
MAIN SECTION

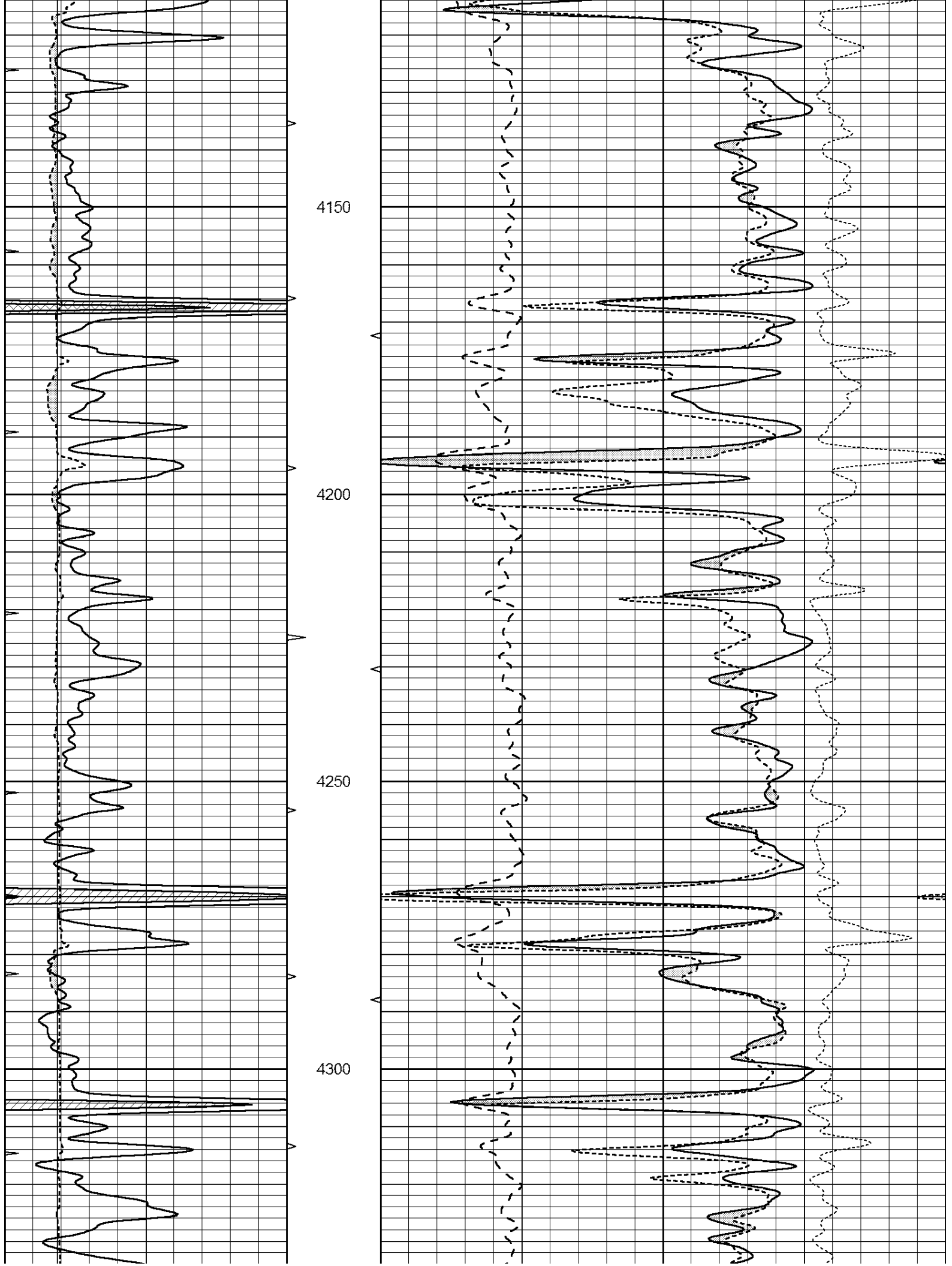
Database File: 408776pe.db
 Dataset Pathname: pass3.8
 Presentation Format: ldt_neu
 Dataset Creation: Thu May 24 15:49:56 2012
 Charted by: Depth in Feet scaled 1:240

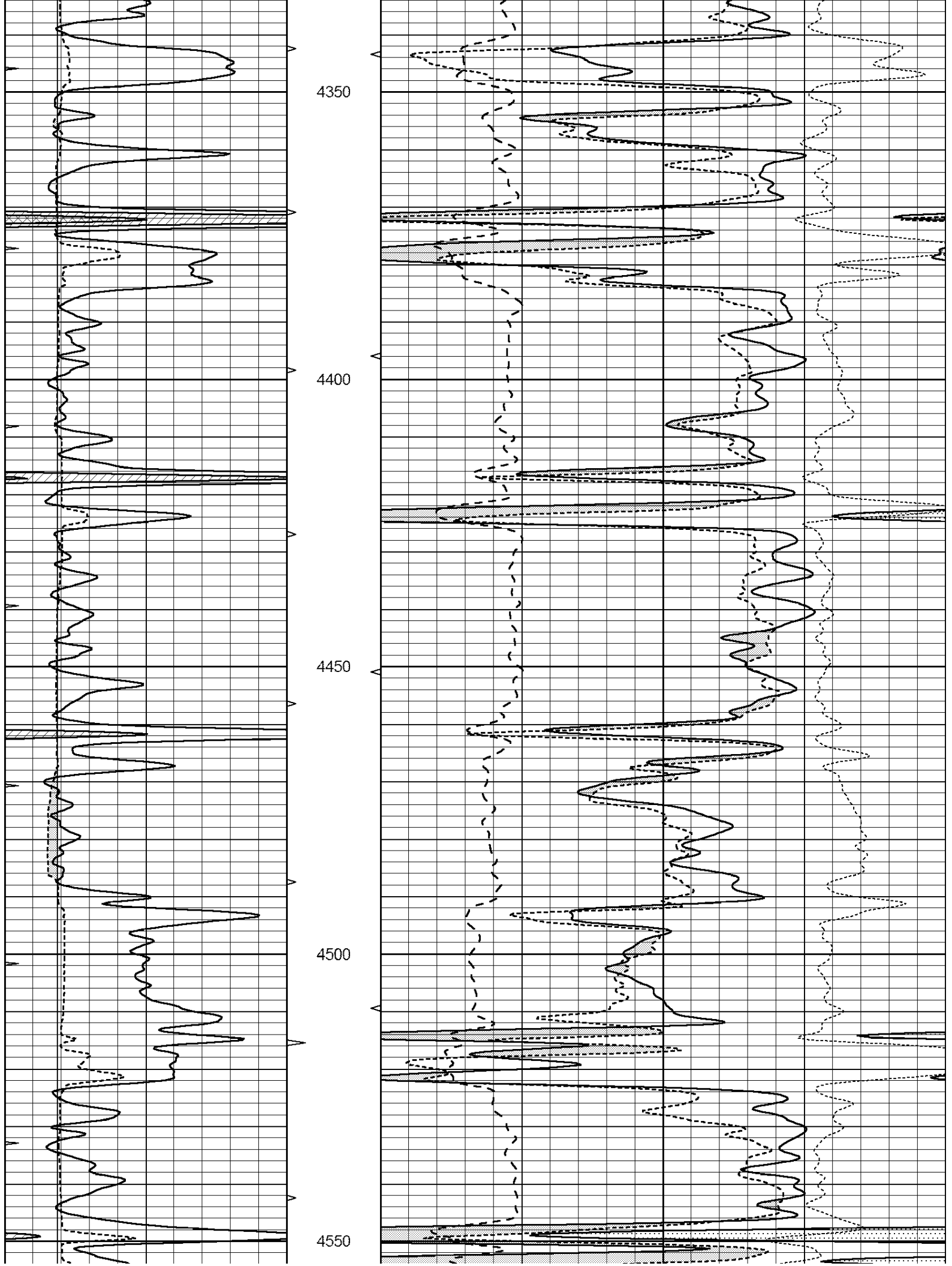
0	GAMMA RAY (GAPI)	150	ABHV	30	COMPENSATED DENSITY (pu)	-10
6	CALIPER (in)	16	10 (ft3)	0	COMPENSATED NEUTRON (pu)	-10
0	MINMK	20	TBHV	0	PE	10 -0.25 CORRECTION (g/cc) 0.25
			0 (ft3)	10		

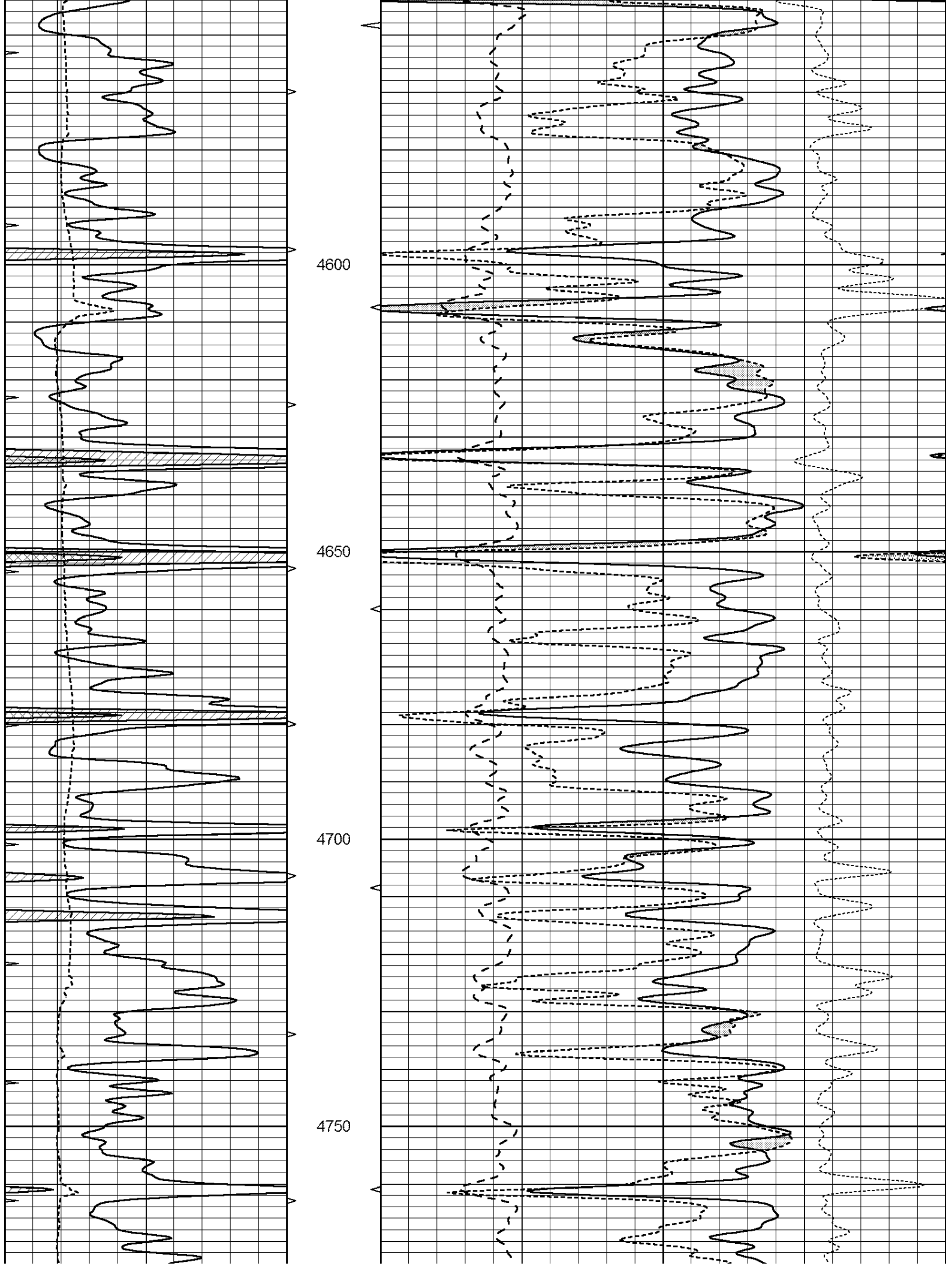


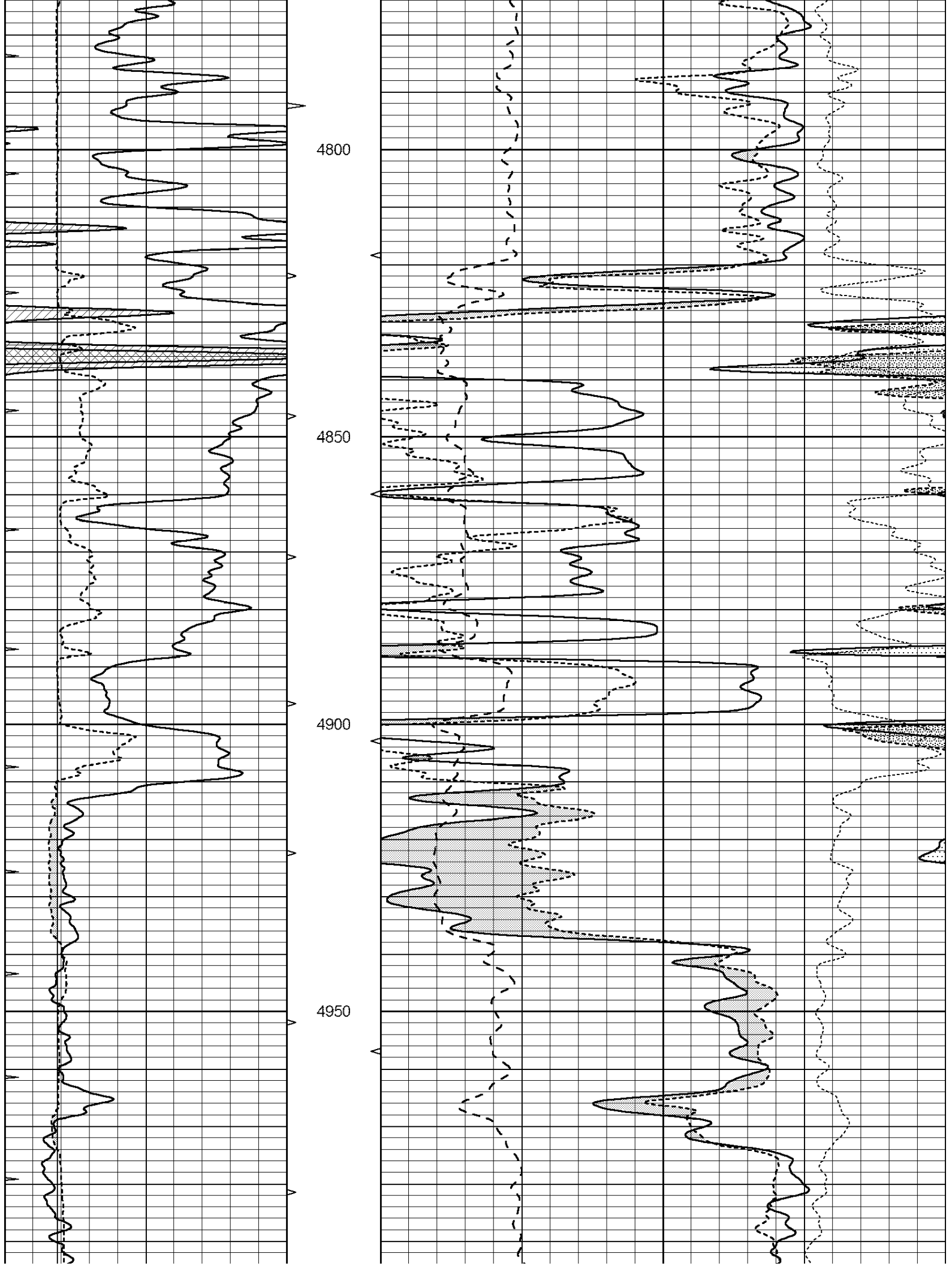


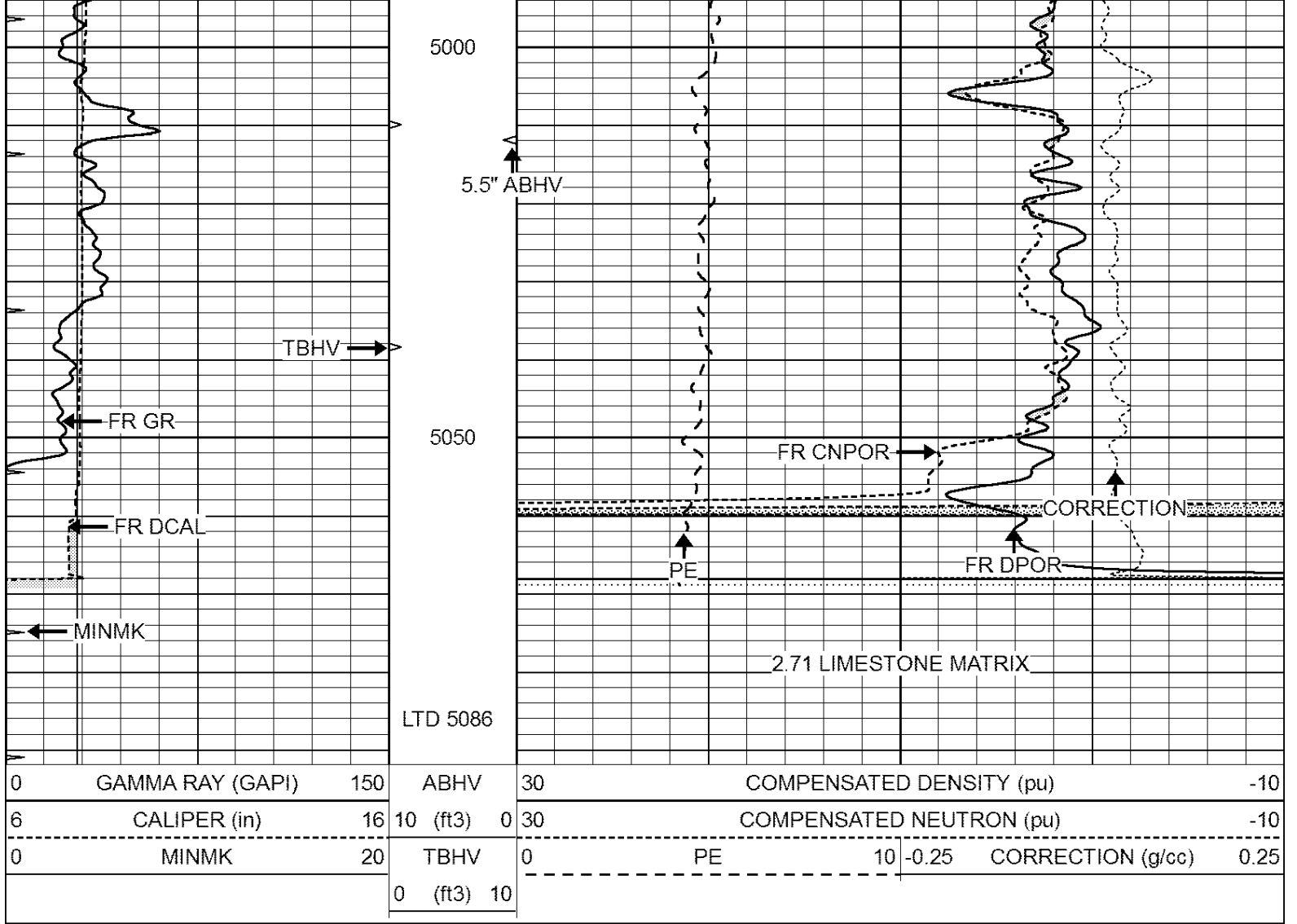










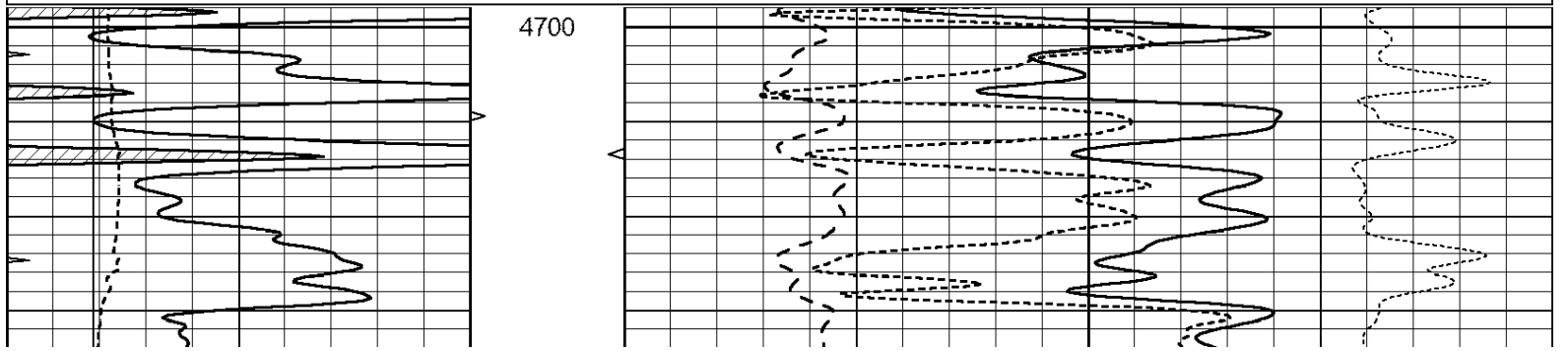


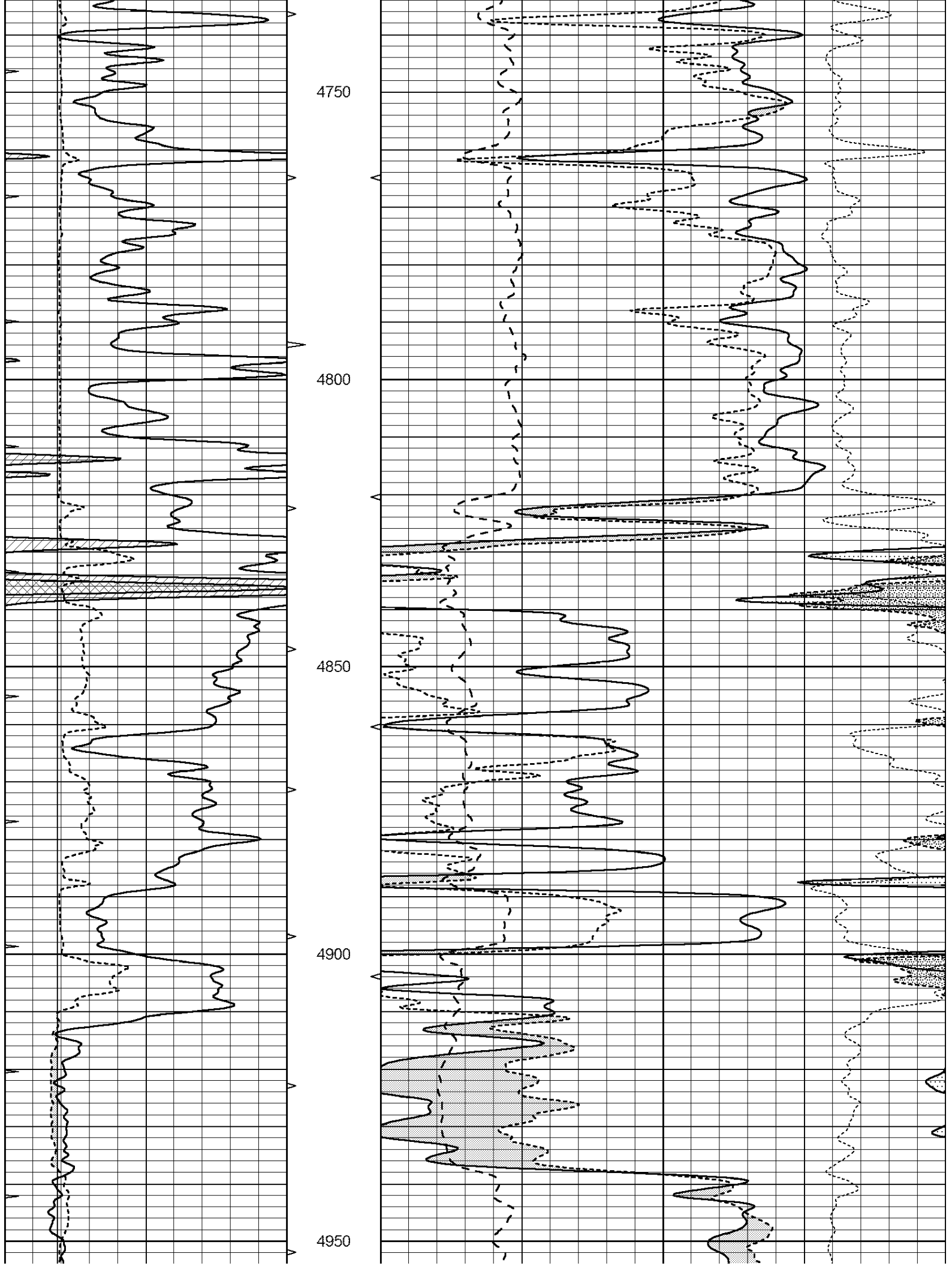
SUPERIOR
Hays,
Kansas

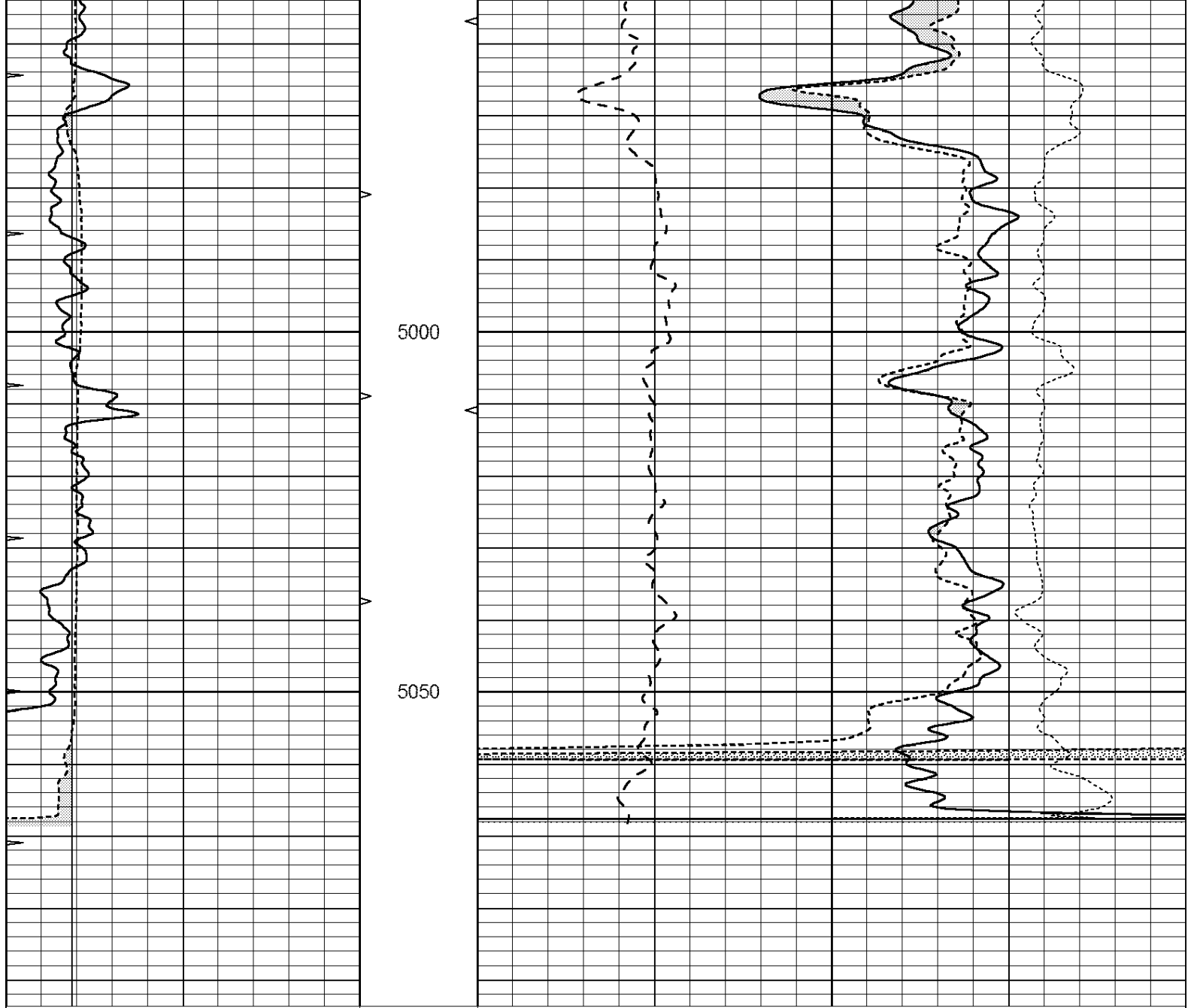
REPEAT SECTION

Database File: 408776pe.db
 Dataset Pathname: pass2.7
 Presentation Format: ldt_neu
 Dataset Creation: Thu May 24 14:26:12 2012
 Charted by: Depth in Feet scaled 1:240

0	GAMMA RAY (GAPI)	150	ABHV	30	COMPENSATED DENSITY (pu)	-10			
6	CALIPER (in)	16	10 (ft3)	0	30	COMPENSATED NEUTRON (pu)	-10		
0	MINMK	20	TBHV	0	PE	10	-0.25	CORRECTION (g/cc)	0.25
			0 (ft3)	10					







0	GAMMA RAY (GAPI)	150	ABHV	30	COMPENSATED DENSITY (pu)	-10
6	CALIPER (in)	16	10 (ft3)	0	COMPENSATED NEUTRON (pu)	-10
0	MINMK	20	TBHV	0	PE	10 -0.25
			0 (ft3)	10	CORRECTION (g/cc)	0.25

Calibration Report

Database File: 408776pe.db
 Dataset Pathname: pass3.8
 Dataset Creation: Thu May 24 15:49:56 2012

Dual Induction Calibration Report

Serial-Model: DIL3-GEAR
 Performed: Thu May 24 13:36:37 2012

Loop:	Readings				References		Results	
	Air	Loop			Air	Loop	m	b
Deep	0.011	0.656	V	0.000	400.000	mmho/m	640.000	10.000
Medium	0.013	0.740	V	0.000	462.500	mmho/m	700.000	-5.000

Internal:	Zero	Cal		Zero	Cal		m	b
Deep	0.002	0.645	V	0.000	400.000	mmho/m	622.059	-1.071
Medium	0.007	0.740	V	0.000	462.500	mmho/m	631.393	-4.555

Litho Density Calibration Report
Serial: 006 Model: PRB
Performed Sun Aug 15 09:48:41 2010

Litho Density Calibration

	Background	Magnesium	Aluminum	Sandstone	
Window 1	1686.6	11612.8	3932.0	12718.8	cps
Window 2	1531.4	9204.7	3267.8	9851.9	cps
Window 3	1198.3	4733.6	1952.5	4920.6	cps
Window 4	317.3	321.2	325.9	303.6	cps
Long Space	0.0	7673.3	1736.4	8320.4	cps
Short Space	1.7	2548.5	1657.2	2628.8	cps
Rho		1.7100	2.5900	1.3800	g/cc
Pe			2.5700	1.5500	
Rib Angle	: 43.8	Rib Slope	: 0.961	Density/Spine Ratio	: 0.569
Spine Angle	: 73.8	Spine Slope	: 3.453	Spine Intercept	: -18.1

Caliper

	Readings	Reference	
Low Ref	4.0	8.3	
High Ref	5.9	15.0	
Gain: 3.5			Offset: -5.5

Compensated Neutron Calibration Report

Serial Number: 070808
Tool Model: Probe

PRE-SURVEY VERIFICATION

Detector	Readings	Measured	Target
Short Space	cps		
Long Space	cps	pu	pu

POST-SURVEY VERIFICATION

Detector	Readings	Measured	Target
Short Space	cps		
Long Space	cps	pu	pu

Gamma Ray Calibration Report

Serial Number: 070559
Tool Model: OPEN_GR
Performed: Tue May 22 19:38:45 2012

Calibrator Value: 1.0 GAPI

Background Reading: 0.0 cps
Calibrator Reading: 1.0 cps

Sensitivity: 0.3000 GAPI/cps