



**SUPERIOR**  
Hays,  
Kansas

**TRIPLE COMBO  
LOG  
(TIGHT HOLE)**

Company NEW GULF OPERATING, LLC.  
Well A.C. FELT #1  
Field WILDCAT  
County SCOTT  
State KANSAS

Company NEW GULF OPERATING, LLC.  
Well A.C. FELT #1  
Field WILDCAT  
County SCOTT State KANSAS

Location: API # : 15-171-20878-0000  
2523' FNL & 2621' FEL  
SEC 6 TWP 18S RGE 34W  
Permanent Datum GROUND LEVEL Elevation 3154  
Log Measured From KELLY BUSHING 10' A.G.L.  
Drilling Measured From KELLY BUSHING  
Other Services  
CDL/CNL/PE  
DIL/MEL  
Elevation  
K.B. 3164  
D.F. 3162  
G.L. 3154

Date	5/24/12
Run Number	ONE
Depth Driller	5082
Depth Logger	5086
Bottom Logged Interval	5084
Top Log Interval	3500
Casing Driller	8 5/8"@251'
Casing Logger	254
Bit Size	7 7/8"
Type Fluid in Hole	CHEMICAL MUD
Density / Viscosity	9.4/58
pH / Fluid Loss	10.5/10.8
Source of Sample	FLOWLINE
Rm @ Meas. Temp	.900@84F
Rmt @ Meas. Temp	.675@84F
Rmc @ Meas. Temp	1.08@84F
Source of Rmf / Rmc	MEASUREMENT
Rm @ BHT	.600@126F
Time Circulation Stopped	3 HOURS
Time Logger on Bottom	1:30 P.M.
Maximum Recorded Temperature	126F
Equipment Number	4010
Location	HAYS, KANSAS
Recorded By	JEFF LUEBBERS
Witnessed By	CURTIS COVEY
	DANNY BIRDWELL

<<< Fold Here >>>

All interpretations are opinions based on inferences from electrical or other measurements and we cannot and do not guarantee the accuracy or correctness of any interpretation, and we shall not, except in the case of gross or willful negligence on our part, be liable or responsible for any loss, costs, damages, or expenses incurred or sustained by anyone resulting from any interpretation made by any of our officers, agents or employees. These interpretations are also subject to our general terms and conditions set out in our current Price Schedule.

Comments

THANK YOU FOR USING SUPERIOR WELL SERVICE HAYS, KANSAS (785) 628-6395  
DIRECTIONS  
SCOTT CITY, KS. (4 WAY STOP) 12W. ON HWY 96 TO "SCOTT/WICHITA COUNTY LINE", 1 1/2N., 1/2E.  
INTO AND BACK SOUTH

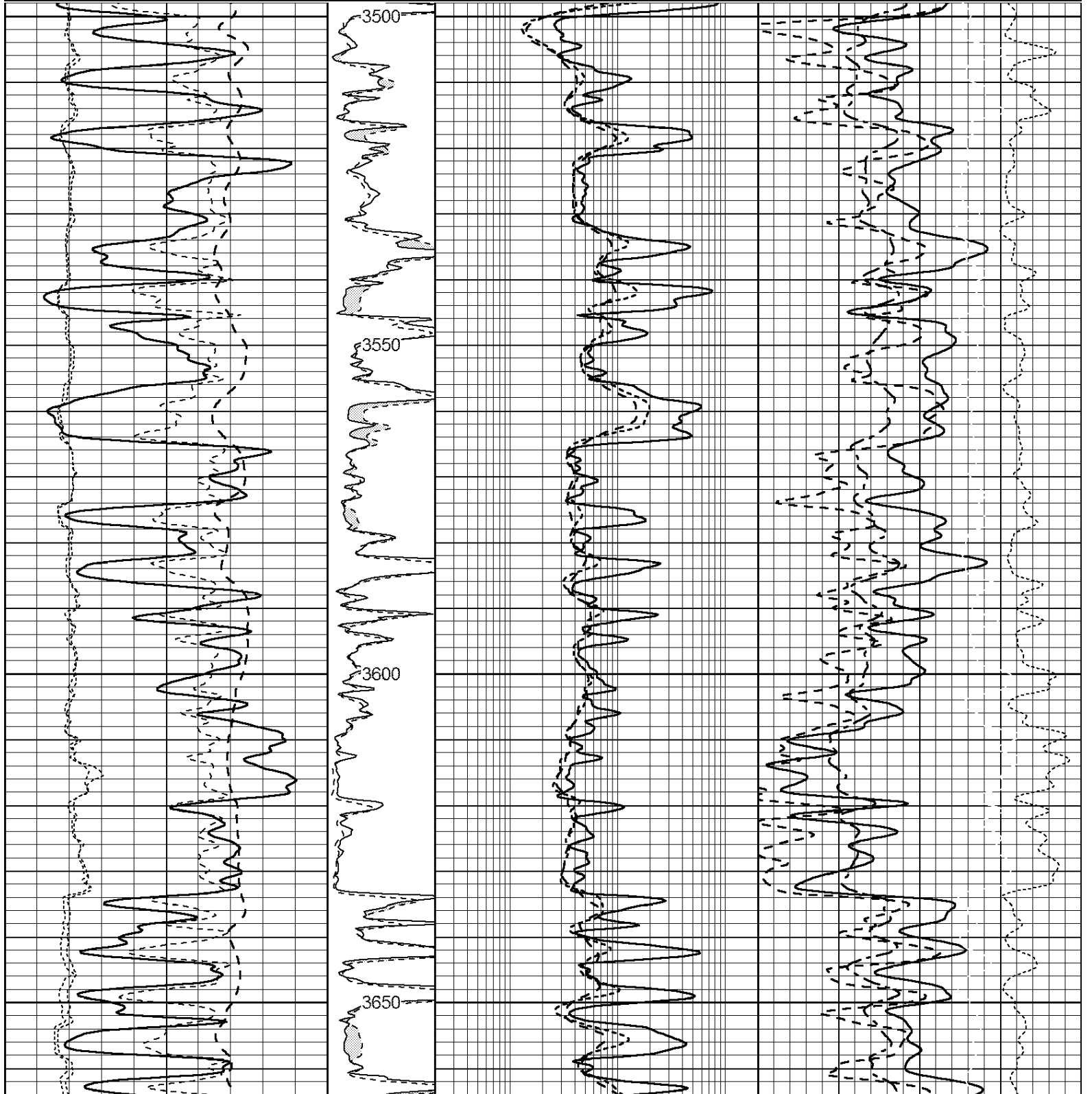


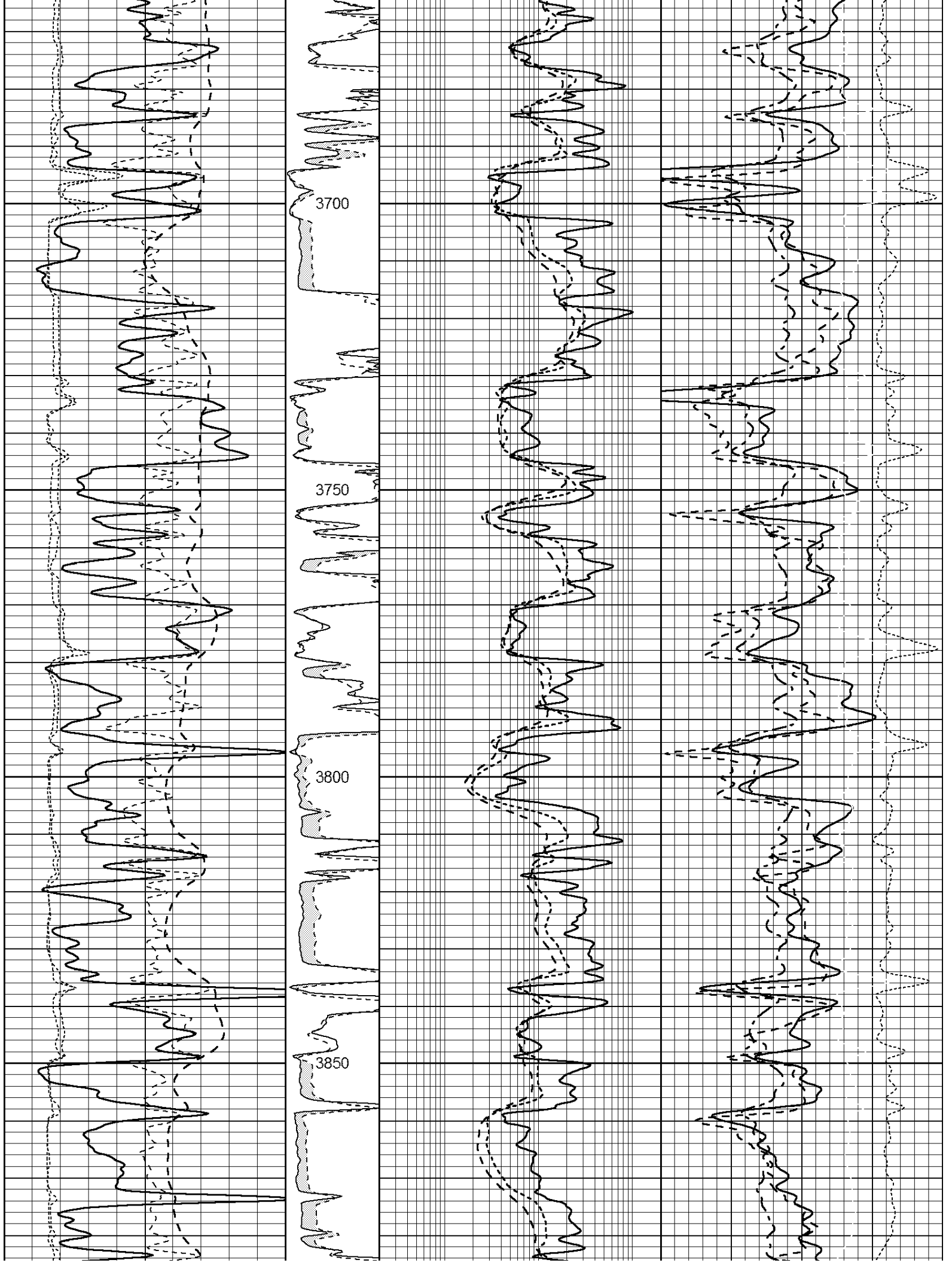
SUPERIOR  
Hays,  
Kansas

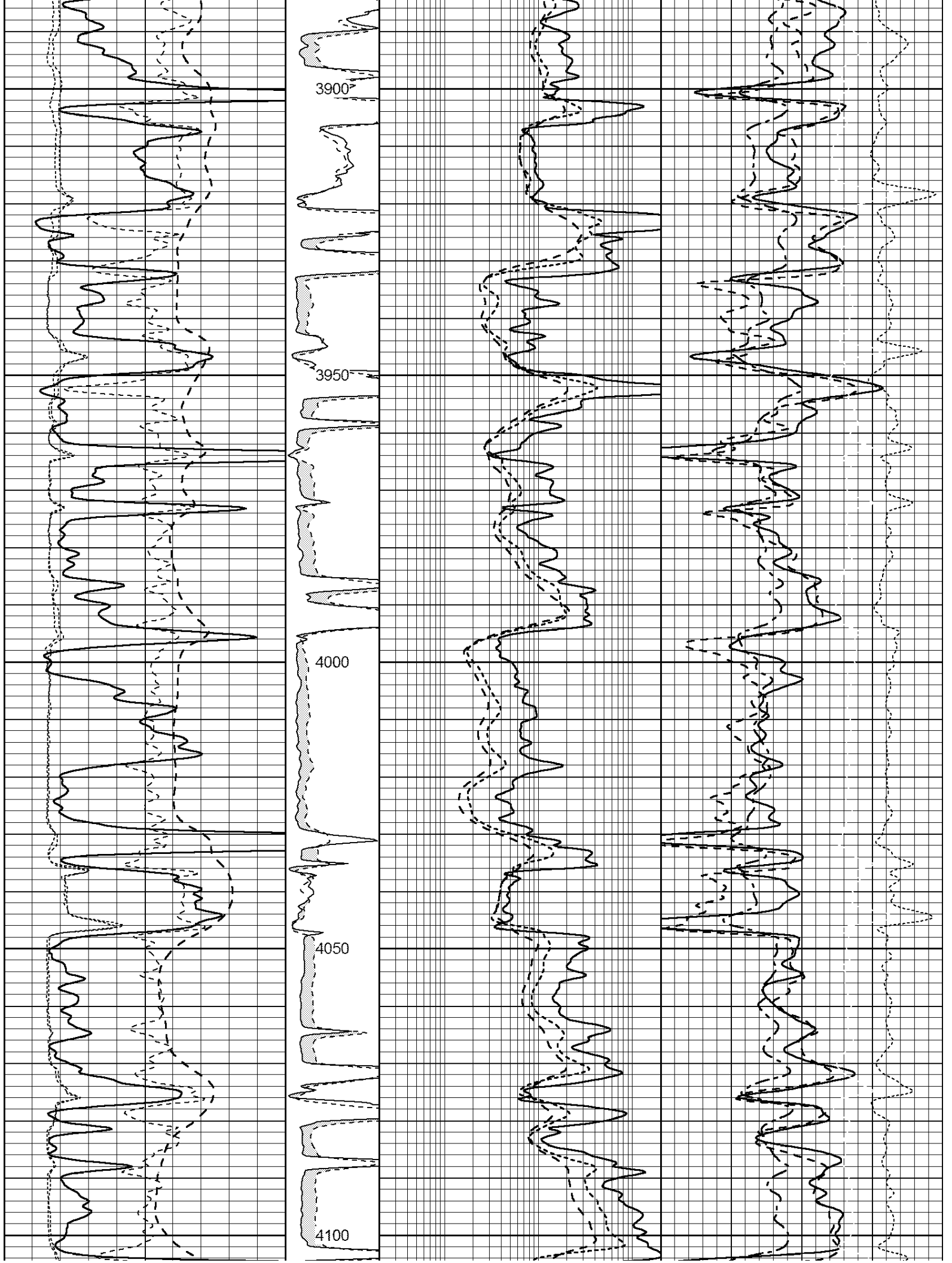
**MAIN SECTION**

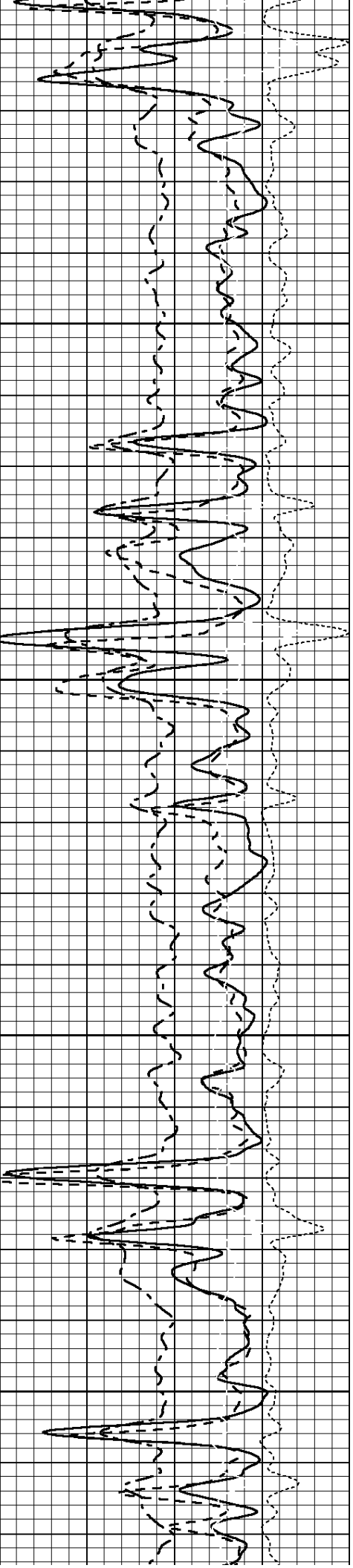
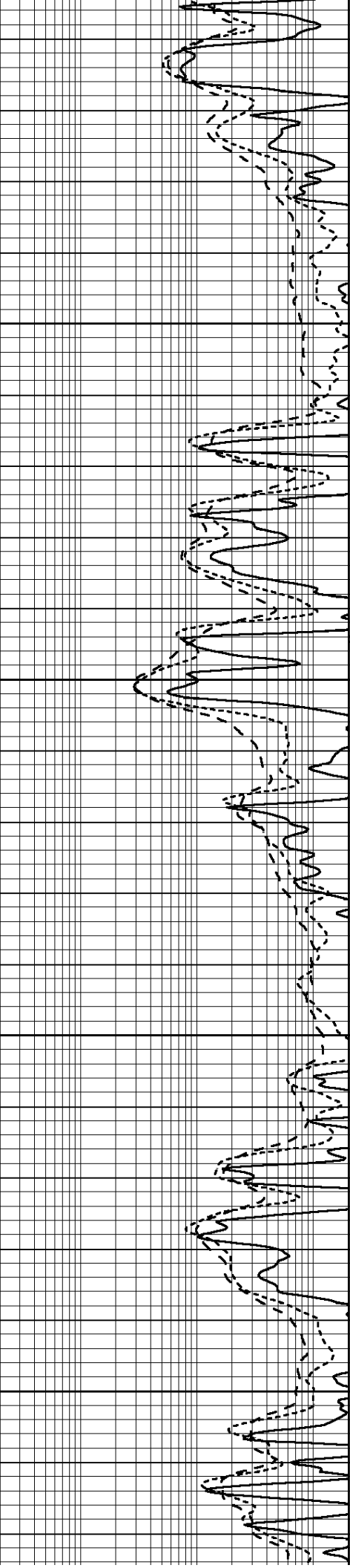
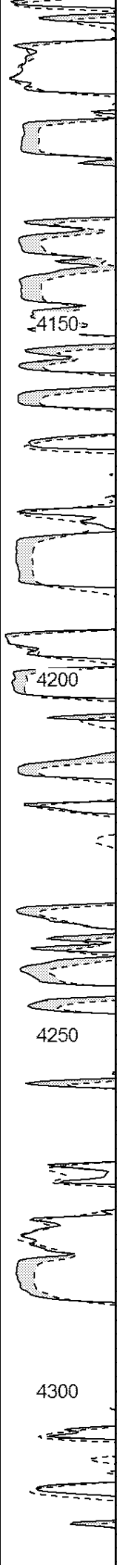
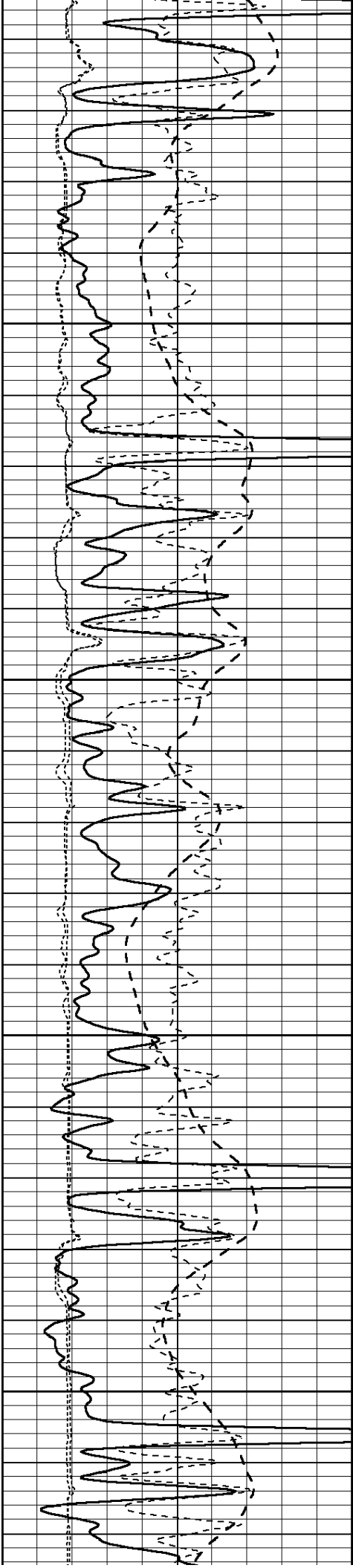
Database File: 408776pe.db  
 Dataset Pathname: pass3.8L  
 Presentation Format: obrcomp  
 Dataset Creation: Thu May 24 17:51:09 2012  
 Charted by: Depth in Feet scaled 1:240

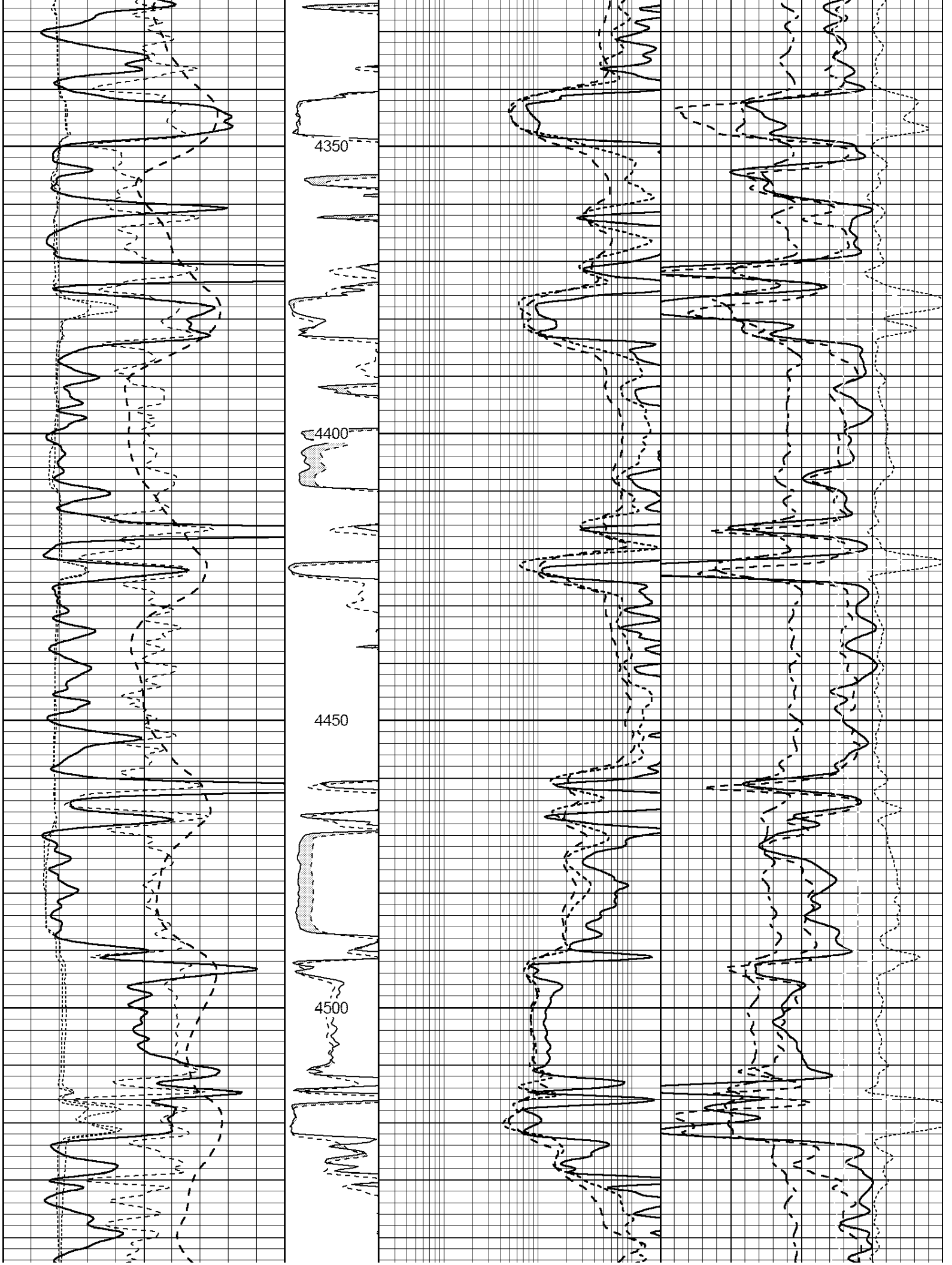
0	Gamma Ray (GAPI)	150	MEL15	0.2	Deep Resistivity (Ohm-m)	200	30	CN Porosity (pu)	-10
-100	SP (mV)	100	(Ohm-m)	0.2	Medium Resistivity (Ohm-m)	200	30	Density Porosity (pu)	-10
-200	RxoRt	100	0 20	0.2	Shallow Resistivity (Ohm-m)	200	0	PE	10
6	DCAL (in)	16	MEL20					RHOC	
6	MELCAL (in)	16	(Ohm-m)					-0.25 (g/cc)	0.25
			0 20						

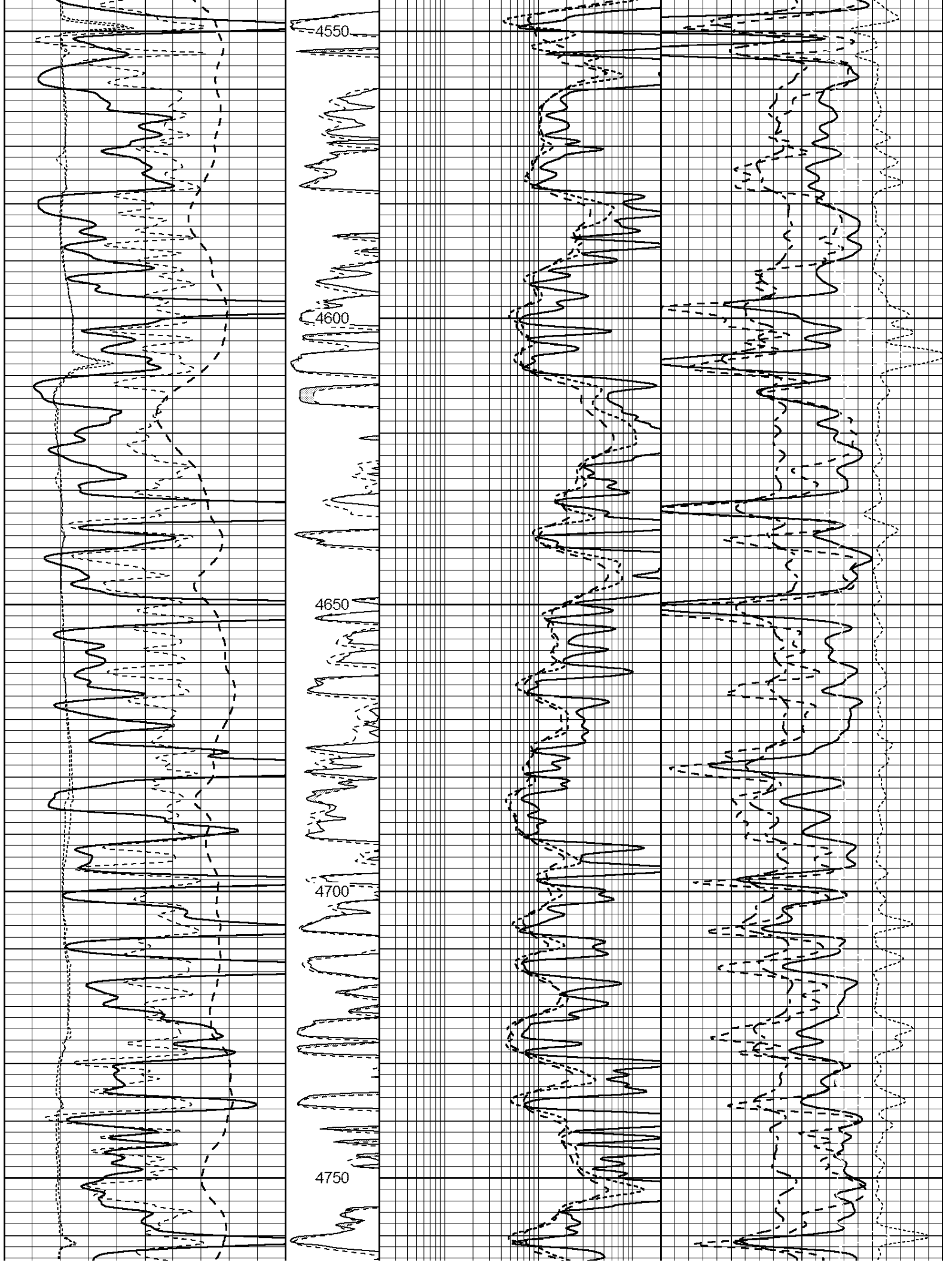


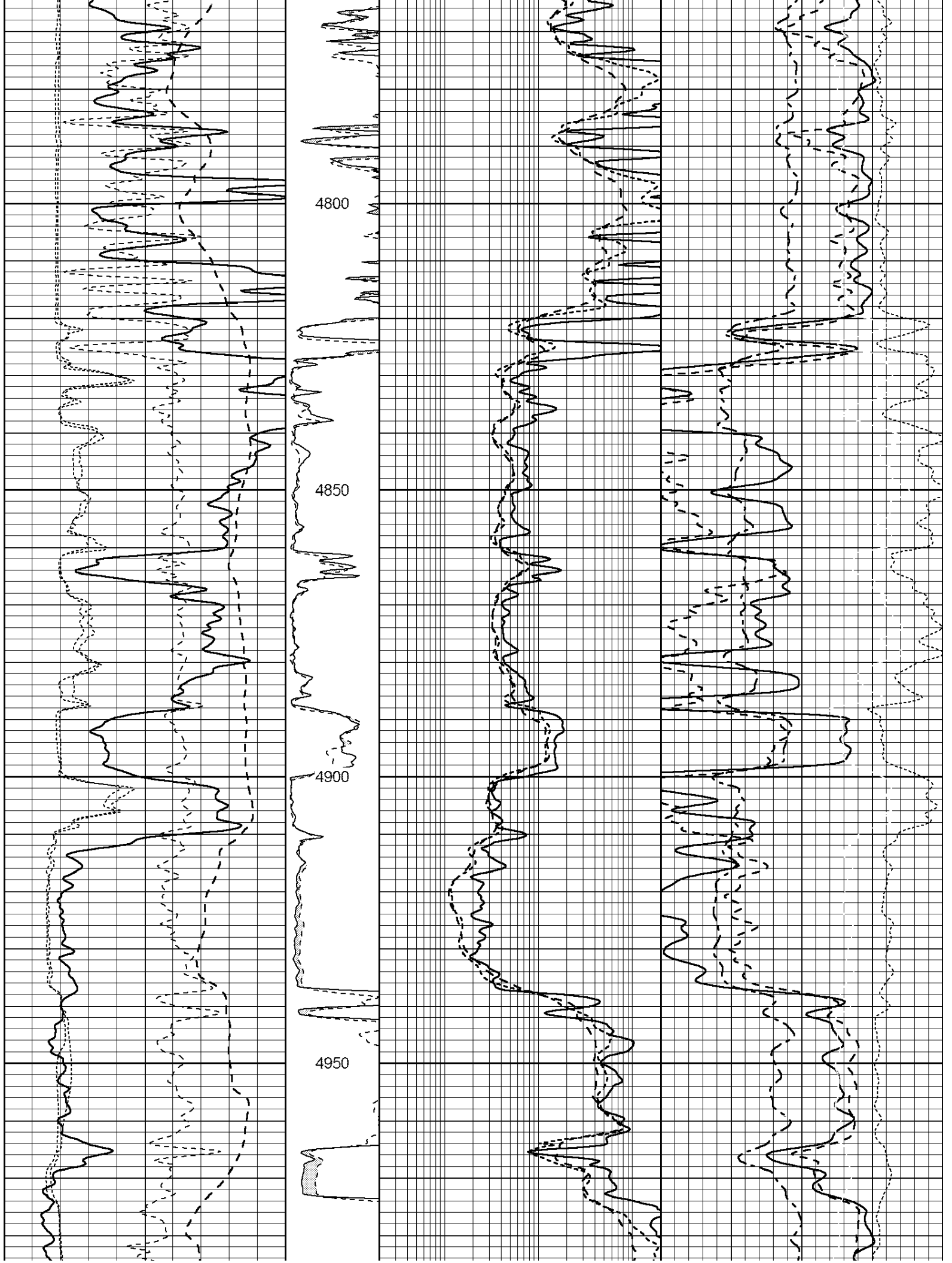




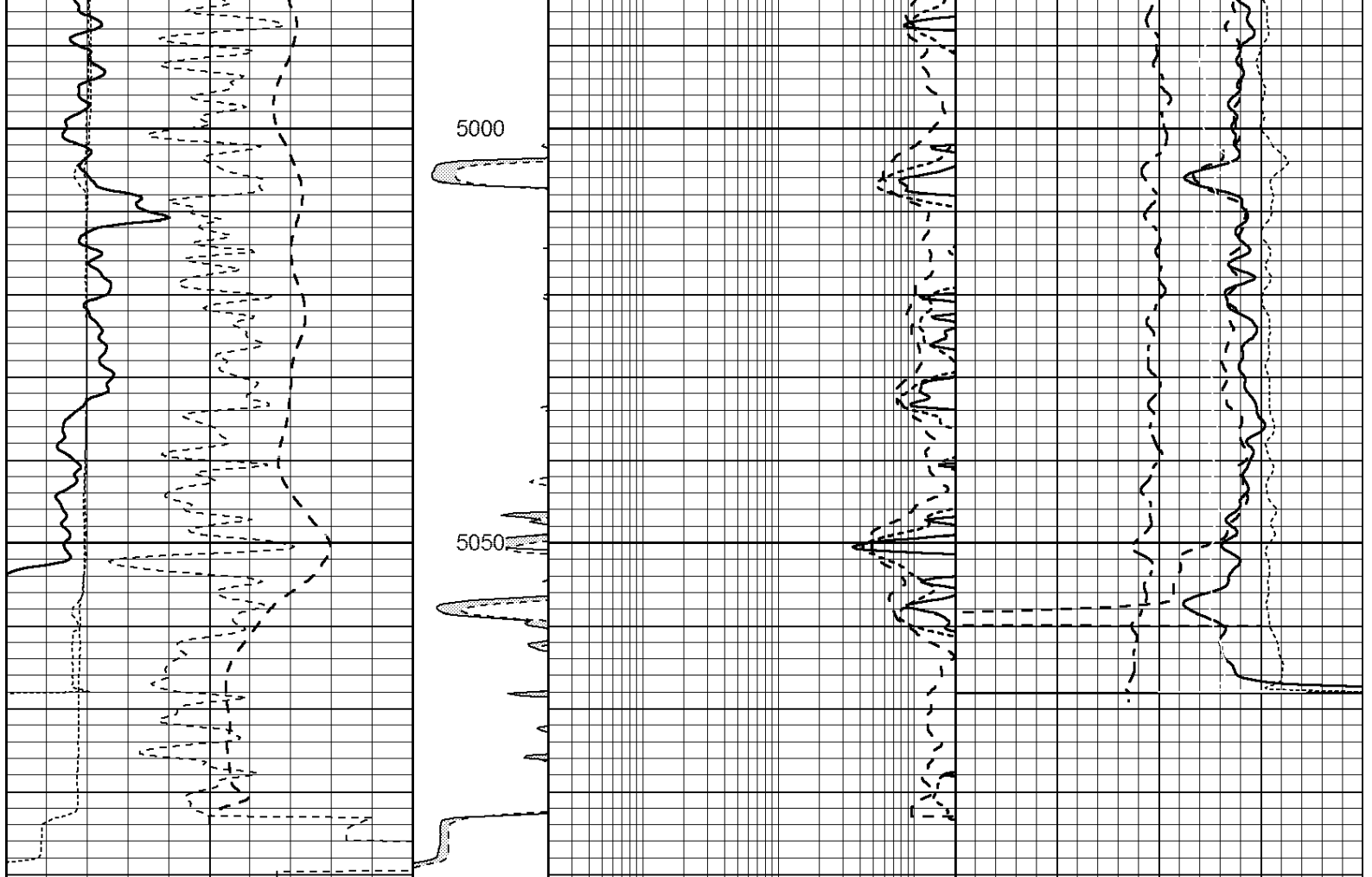












0	Gamma Ray (GAPI)	150	MEL15	0.2	Deep Resistivity (Ohm-m)	200	30	CN Porosity (pu)	-10
-100	SP (mV)	100	(Ohm-m)	0.2	Medium Resistivity (Ohm-m)	200	30	Density Porosity (pu)	-10
-200	RxoRt	100	0 20	0.2	Shallow Resistivity (Ohm-m)	200	0	PE	10
6	DCAL (in)	16	MEL20					RHOC	
6	MELCAL (in)	16	(Ohm-m)					-0.25 (g/cc)	0.25
			0 20						