



SUPERIOR
Hays,
Kansas

**BOREHOLE
PROFILE LOG
(TIGHT HOLE)**

Company NEW GULF OPERATING, LLC.
Well A.C. FELT #1
Field WILDCAT
County SCOTT
State KANSAS

Company NEW GULF OPERATING, LLC.
Well A.C. FELT #1
Field WILDCAT
County SCOTT State KANSAS

Location: API # : 15-171-20878-0000
2523' FNL & 2621' FEL
SEC 6 TWP 18S RGE 34W
Permanent Datum GROUND LEVEL Elevation 3154
Log Measured From KELLY BUSHING 10' A.G.L.
Drilling Measured From KELLY BUSHING
Other Services
CDL/CNL/PE
DIL/MEL
Elevation
K.B. 3164
D.F. 3162
G.L. 3154

Date	5/24/12		
Run Number	ONE		
Depth Driller	5082		
Depth Logger	5086		
Bottom Logged Interval	5084		
Top Log Interval	3500		
Casing Driller	8 5/8"@251'		
Casing Logger	254		
Bit Size	7 7/8"		
Type Fluid in Hole	CHEMICAL MUD	CHLORIDES 7,500 PPM	
Density / Viscosity	9.4/58		
pH / Fluid Loss	10.5/10.8		
Source of Sample	FLOWLINE		
Rm @ Meas. Temp	.900@84F		
Rmt @ Meas. Temp	.675@84F		
Rmc @ Meas. Temp	1.08@84F		
Source of Rmf / Rmc	MEASUREMENT		
Rm @ BHT	.600@126F		
Time Circulation Stopped	3 HOURS		
Time Logger on Bottom	1:30 P.M.		
Maximum Recorded Temperature	126F		
Equipment Number	4010		
Location	HAYS, KANSAS		
Recorded By	JEFF LUEBBERS		
Witnessed By	CURTIS COVEY	DANNY BIRDWELL	

<<< Fold Here >>>

All interpretations are opinions based on inferences from electrical or other measurements and we cannot and do not guarantee the accuracy or correctness of any interpretation, and we shall not, except in the case of gross or willful negligence on our part, be liable or responsible for any loss, costs, damages, or expenses incurred or sustained by anyone resulting from any interpretation made by any of our officers, agents or employees. These interpretations are also subject to our general terms and conditions set out in our current Price Schedule.

Comments

THANK YOU FOR USING SUPERIOR WELL SERVICE HAYS, KANSAS (785) 628-6395
DIRECTIONS
SCOTT CITY, KS. (4 WAY STOP) 12W. ON HWY 96 TO "SCOTT/WICHITA COUNTY LINE", 1 1/2N., 1/2E.
INTO AND BACK SOUTH

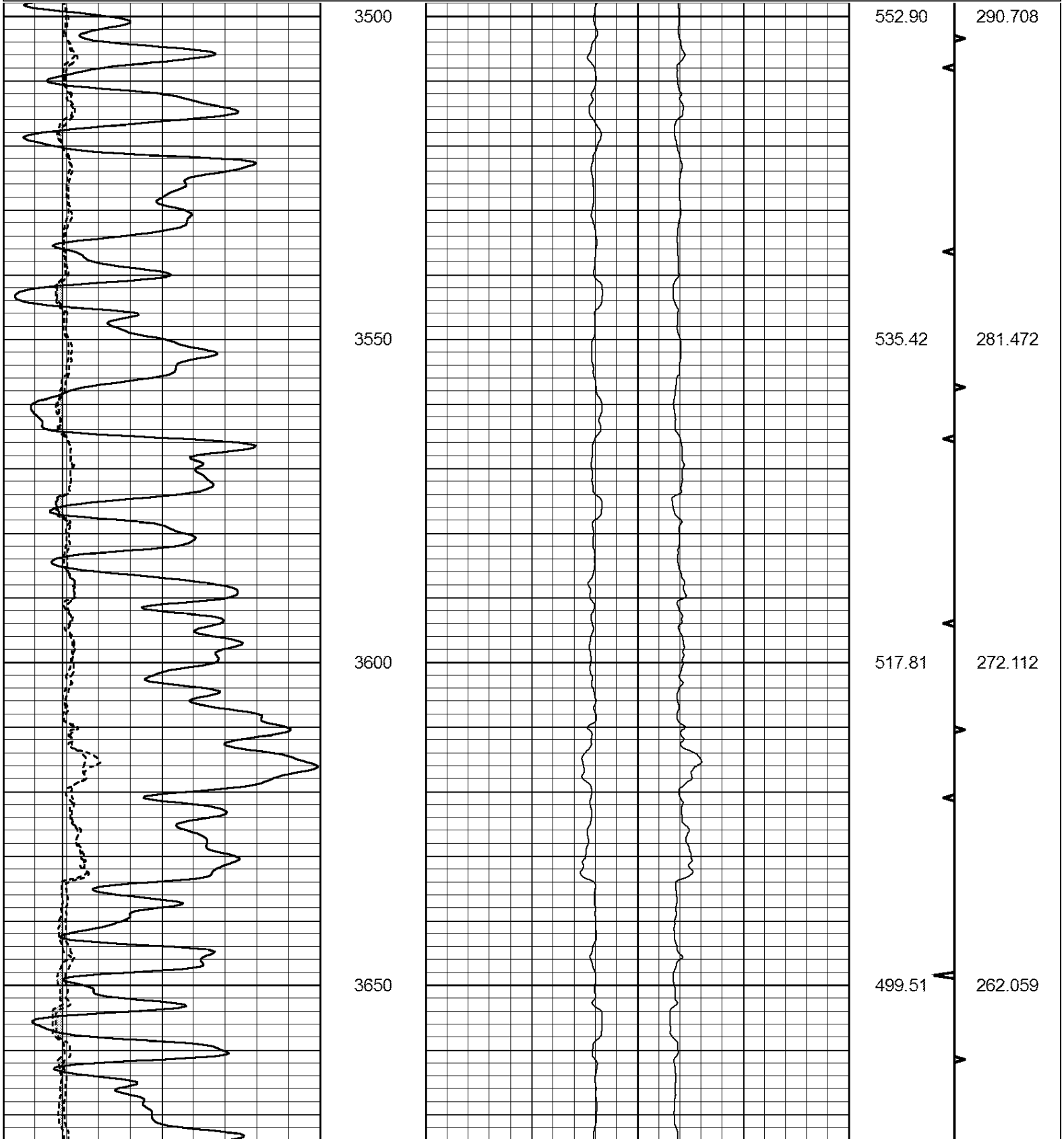


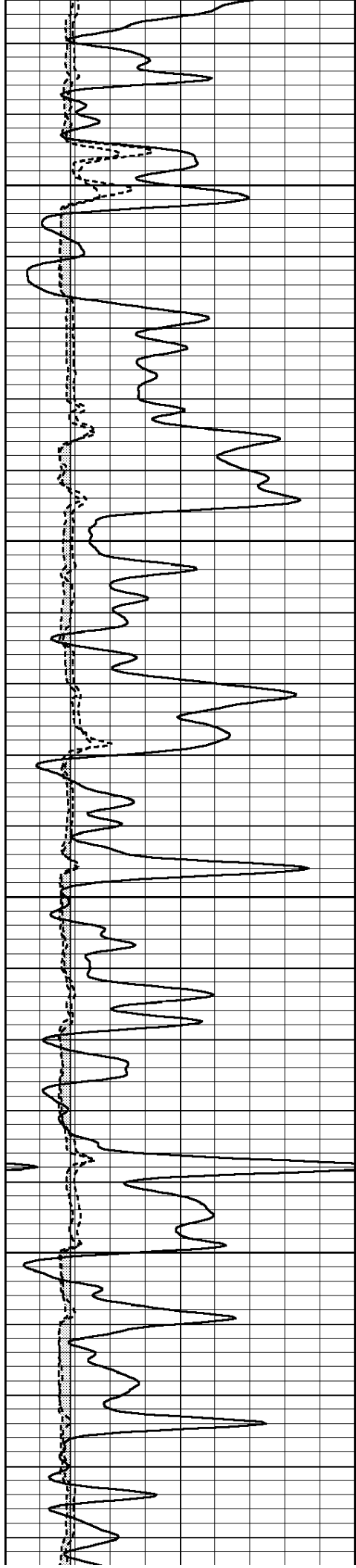
SUPERIOR
Hays,
Kansas

MAIN SECTION

Database File: 408776pe.db
 Dataset Pathname: pass6.4B
 Presentation Format: obrbore
 Dataset Creation: Thu May 24 18:07:57 2012
 Charted by: Depth in Feet scaled 1:240

0	GR (GAPI)	150	16 LEFT CALIPER (in)	6	RIGHT CALIPER	BVTX (ft3)	AVTX (ft3)
6	DCAL (in)	16		6	(in)	TBHV (ft3)	ABHV (ft3)
6	MELCAL (in)	16					



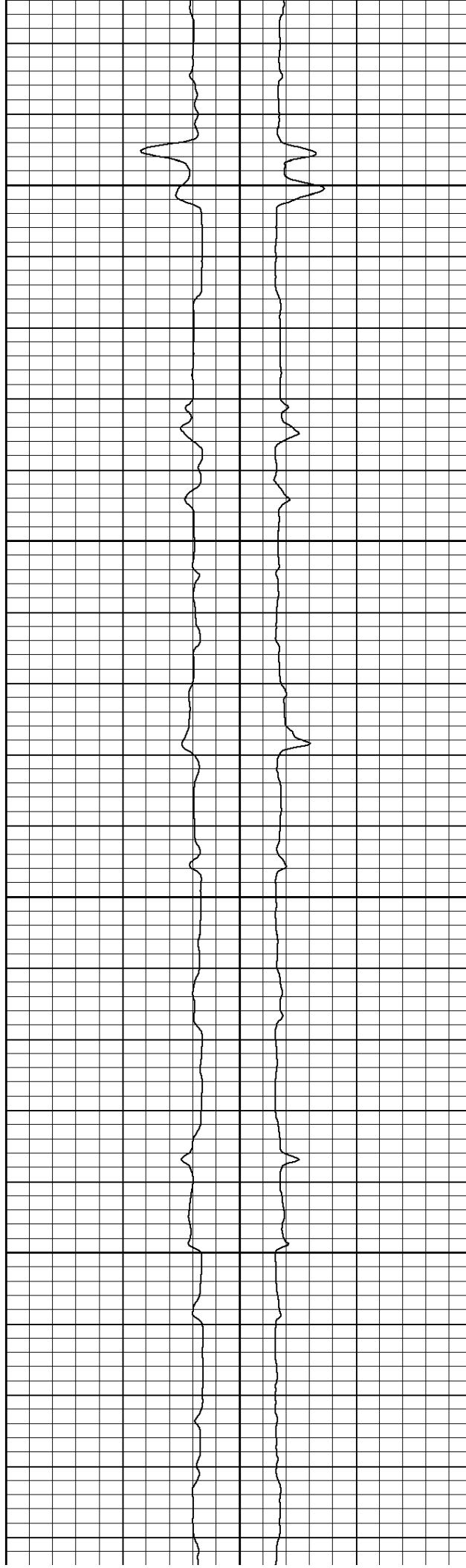


3700

3750

3800

3850



481.83

464.80

447.68

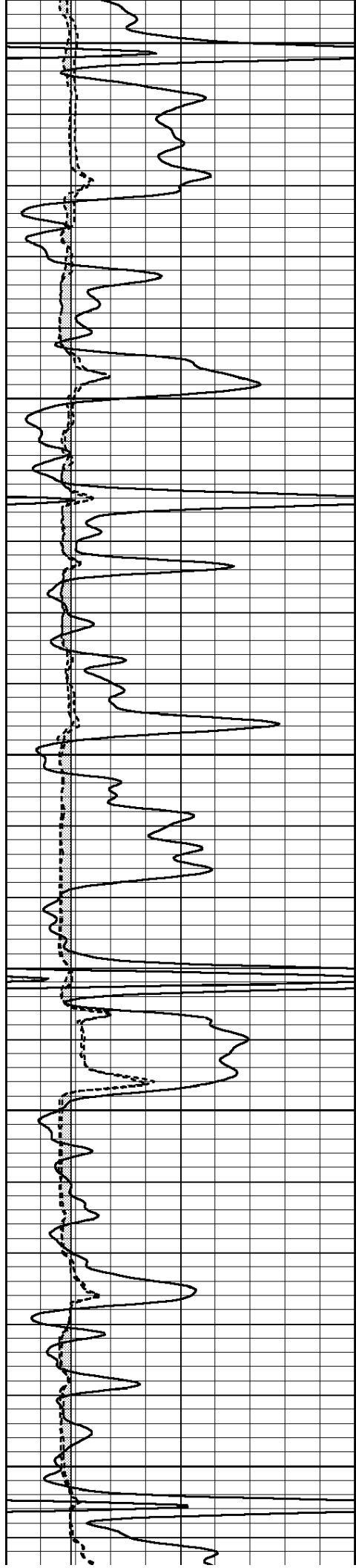
430.95

252.634

243.849

234.984

226.498



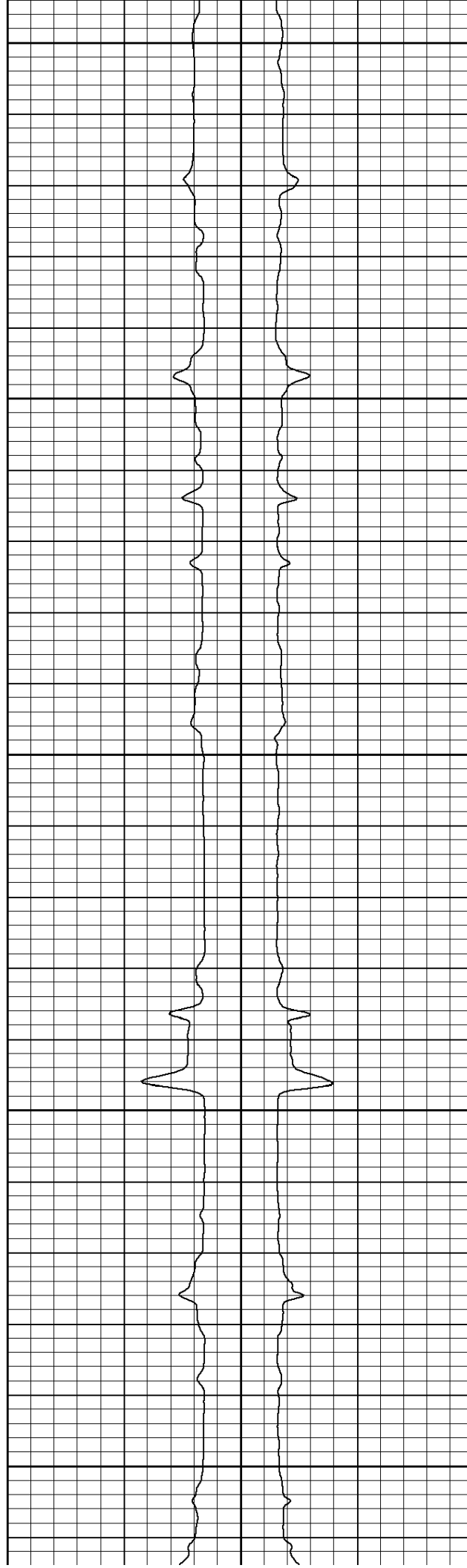
3900

3950

4000

4050

4100



414.57

397.41

380.91

364.08

348.02

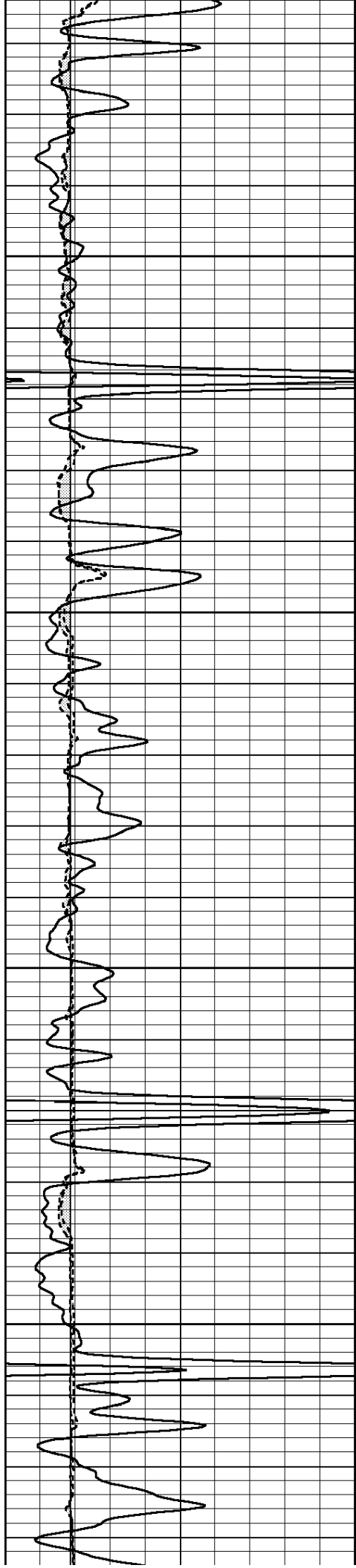
218.368

209.456

201.204

192.627

184.82

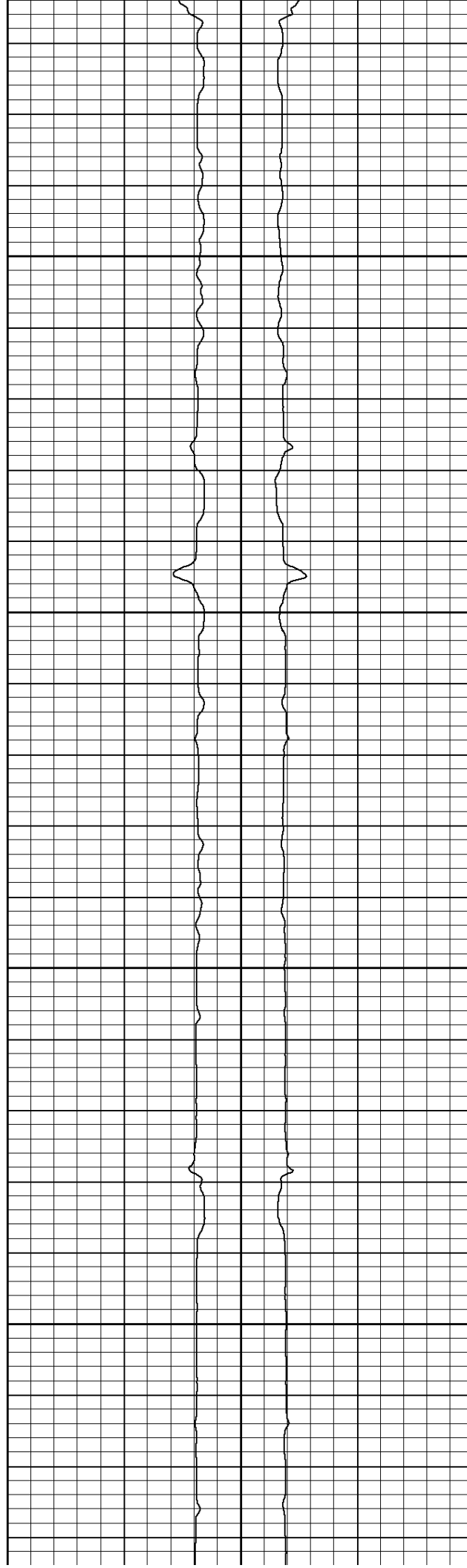


4150

4200

4250

4300



331.35

314.61

298.11

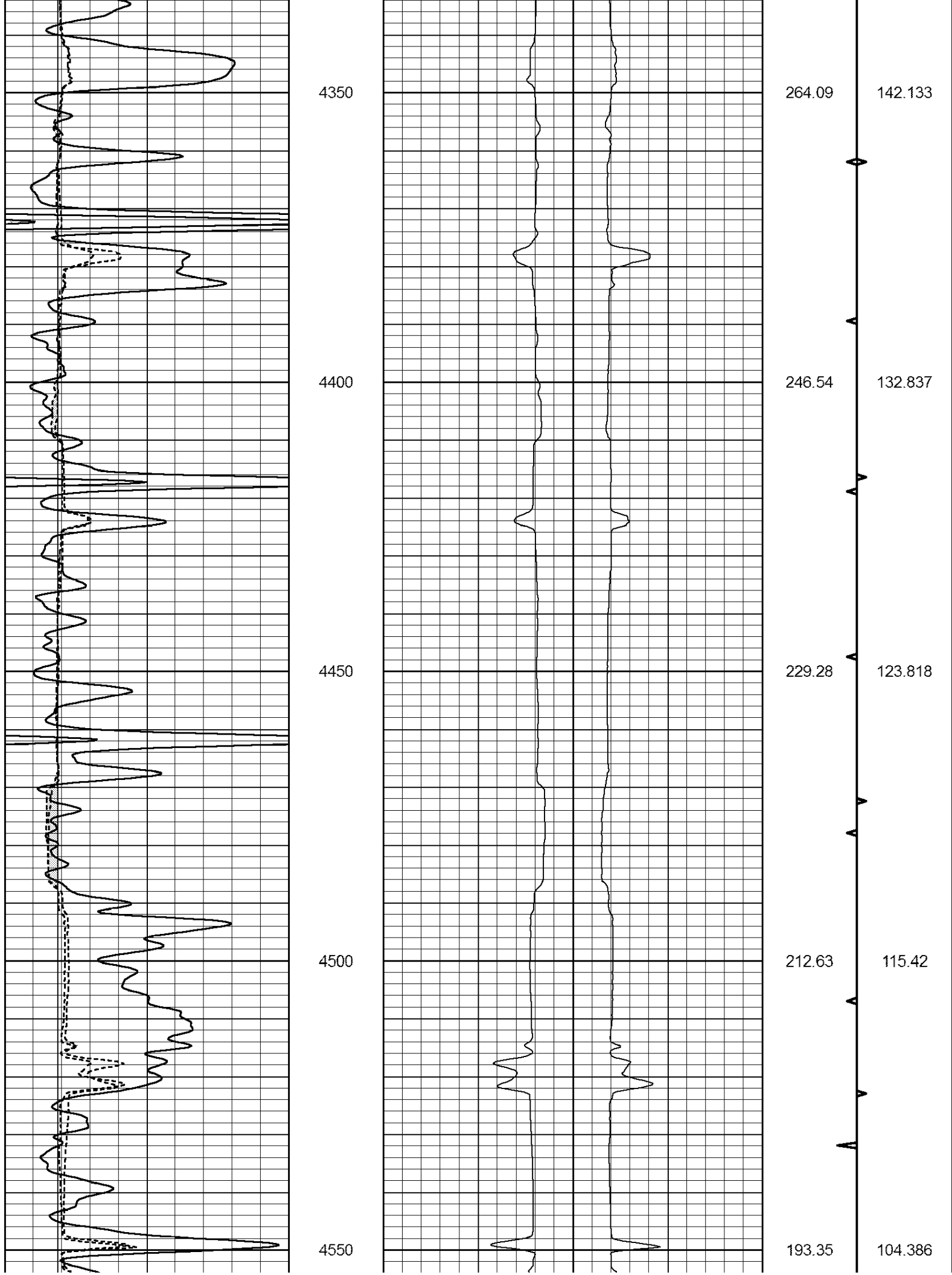
281.34

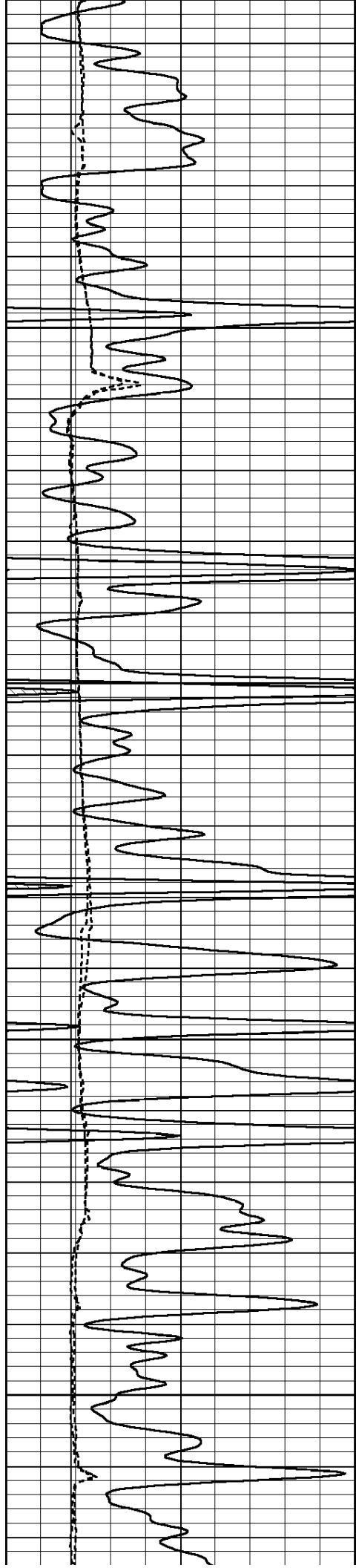
176.4

167.906

159.653

151.13



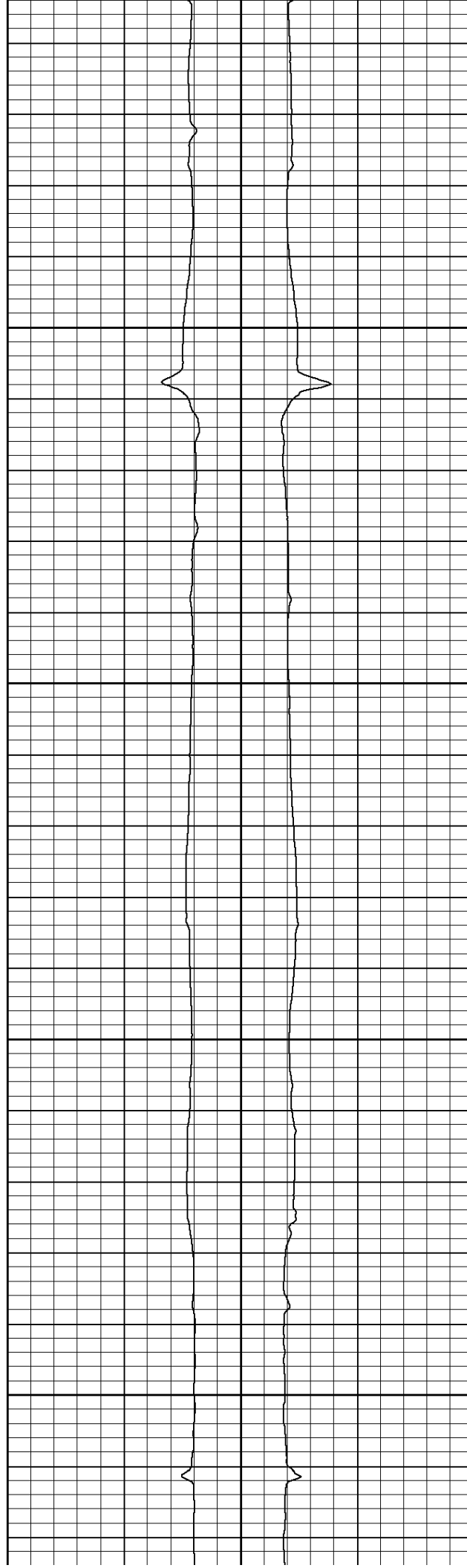


4600

4650

4700

4750



175.20

157.23

138.92

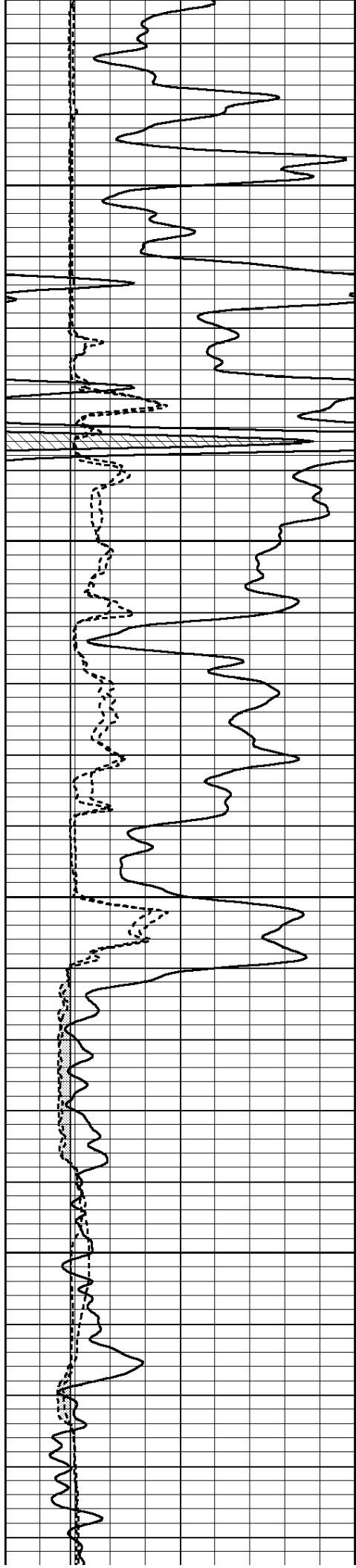
120.98

94.4876

84.7684

74.7087

65.0192

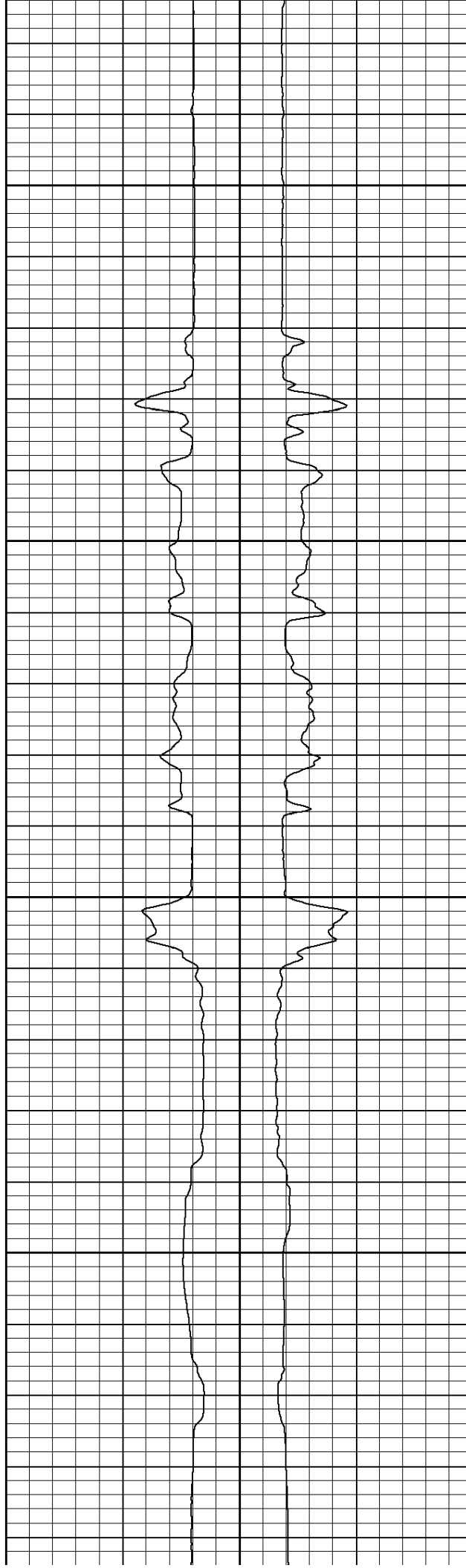


4800

4850

4900

4950



103.60

84.74

65.20

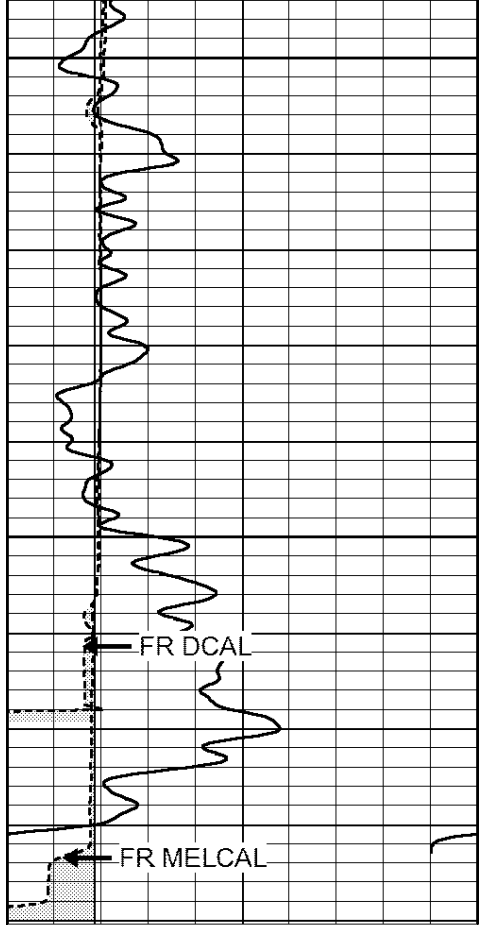
47.30

55.8881

45.2757

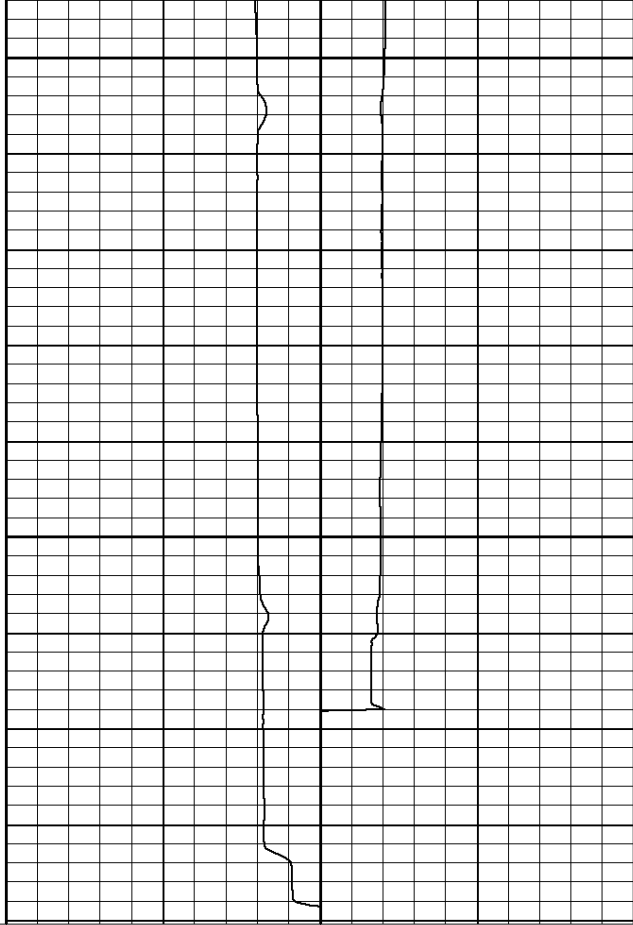
33.985

24.3396

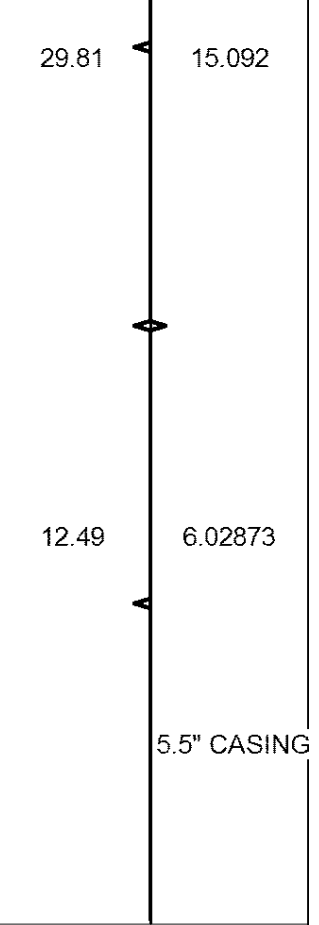


LTD 5086

0	GR (GAPI)	150
6	DCAL (in)	16
6	MELCAL (in)	16



16	LEFT CALIPER (in)	6	RIGHT CALIPER	16
			(in)	



BVTX (ft3)	AVTX (ft3)
TBHV (ft3)	ABHV (ft3)