



(785) 625-3858

Gamma Ray Correlation
Log

15-127-20586-00-00

Company Ventex Energy Corp.
Well Albrect No. 1
Field Lost Springs Extension
County Morris State Kansas

Location 1650' FNL & 33' FEL

Sec: 30 Twp: 16S Rge: 5E

Other Services
Perforate

Permanent Datum Ground Level Elevation 1435
Log Measured From Kelly Bushing 12 Ft. Above Perm. Datum
Drilling Measured From Kelly Bushing

Elevation
K.B. 1447
D.F. 1435
G.L. 1435

Date	5/30/2012	
Run Number	One	
Type Log	GRCCL	
Depth Driller	2425	
Depth Logger	2399	
Bottom Logged Interval	2389.5	
Top Logged Interval	2200	
Type Fluid In Hole	Water	
Salinity, PPM CL		
Density		
Level	Full	
Max. Rec. Temp. F	97	
Operating Rig Time	One Hour	
Equipment -- Location	72 Hays	
Recorded By	K. Ladriagan	
Witnessed By	Gary Brunley	

Borehole Record		Casing Record				
Run No	Bit From	To	Size	Wgt.	From	To
			5.5		0	T.D.

<<< Fold Here >>>

All interpretations are opinions based on inferences from electrical or other measurements and we cannot and do not guarantee the accuracy or correctness of any interpretation, and we shall not, except in the case of gross or willful negligence on our part, be liable or responsible for any loss, costs, damages, or expenses incurred or sustained by anyone resulting from any interpretation made by any of our officers, agents or employees. These interpretations are also subject to our general terms and conditions set out in our current Price Schedule.

Comments

Thank you for using LOG TECH, INC. 785.625.3858
Herington, KS., 3 South to 200 Road, East to 3100 Road, .5 North,
West Into.

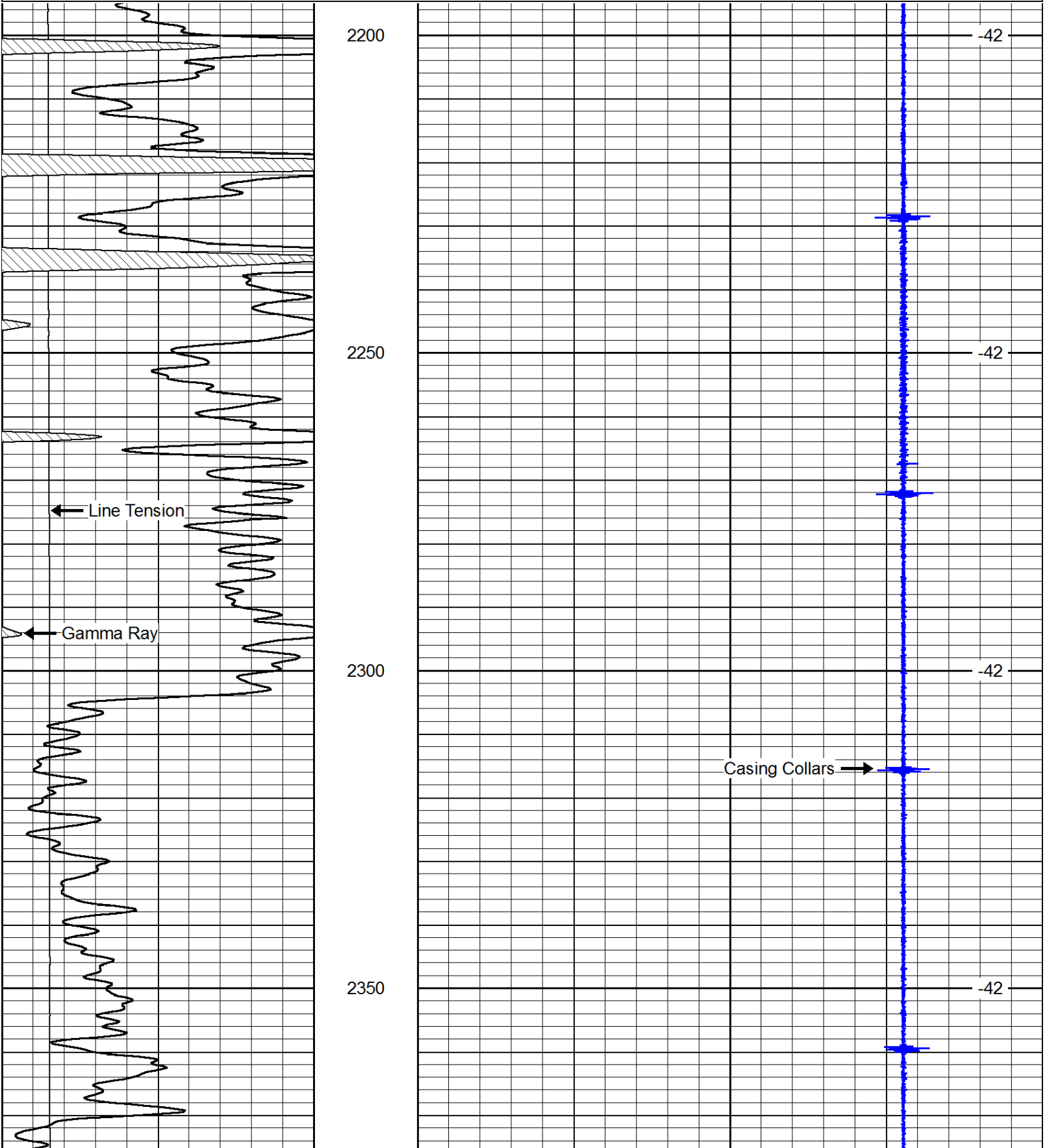


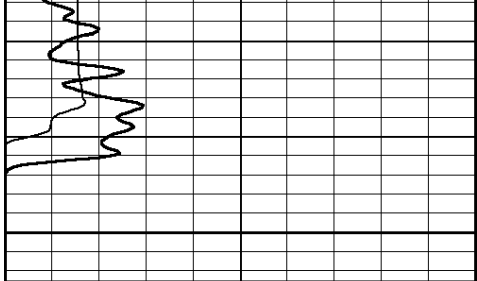
Gamma Gun Correlation

Database File: ventex_albrect1.db
Dataset Pathname: gg/run1/pass3
Presentation Format: gr-ccl
Dataset Creation: Wed May 30 12:01:55 2012 by Log SCH 111116
Charted by: Depth in Feet scaled 1:240

0 Gamma Ray 150
0 lten (lb) 5000

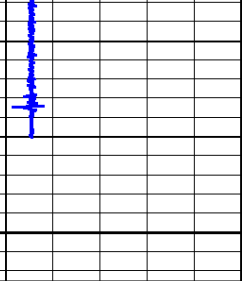
5 Casing Collars -4
LSPD (ft/min)





2400

LTD @ 2399



0 Gamma Ray 150

5 Casing Collars -4

0 lten (lb) 5000

LSPD
(ft/min)