



Sonic Cement  
Bond Log

(785) 625-3858

15-051-26267-00-00

API No.

Company Hertel Oil Company, Inc.

Well Wolf No. 2

Field Dechant South

County Ellis State Kansas

Location 1200' FNL & 1750' FEL

Sec: 13 Twp: 15S Rge: 19W

Permament Datum Ground Level Elevation 2031

Log Measured From Kelly Bushing 8 Ft. Above Perm. Datum

Drilling Measured From Kelly Bushing

Other Services  
Perforate  
Elevation  
K.B. 2039  
D.F.  
G.L. 2031

Run Number

One

Date Survey

3/16/2012

Date Cementing

2/29/2012

Type Cementing Operation

Primary

Depth Driller

3767

Depth Logger

3739

Logged Interval

3737 to 2550

Casing Driller

5.5 @ T.D.

Float Collar -- D.V. Tool

||||| 1185

Squeeze Depth

|||||

Amount & Type Cement

|||||

Amount & Type Admix

|||||

Type Fluid In Hole

Water

Fluid Level

285

Salinity PPM CL

|||||

Weight lb/gal -- Vis.

|||||

Approx. Logged Cement Top

2710

Calculated Cement Top

|||||

Max. Hole Temperature

114

Tool No.

D-1

Spacing Recorded

3-5

Equipment -- Location

72 Hays

Recorded By

K. Ladrigan

Witnessed By

Mike Hertel

<<< Fold Here >>>

All interpretations are opinions based on inferences from electrical or other measurements and we cannot and do not guarantee the accuracy or correctness of any interpretation, and we shall not, except in the case of gross or willful negligence on our part, be liable or responsible for any loss, costs, damages, or expenses incurred or sustained by anyone resulting from any interpretation made by any of our officers, agents or employees. These interpretations are also subject to our general terms and conditions set out in our current Price Schedule.

Comments

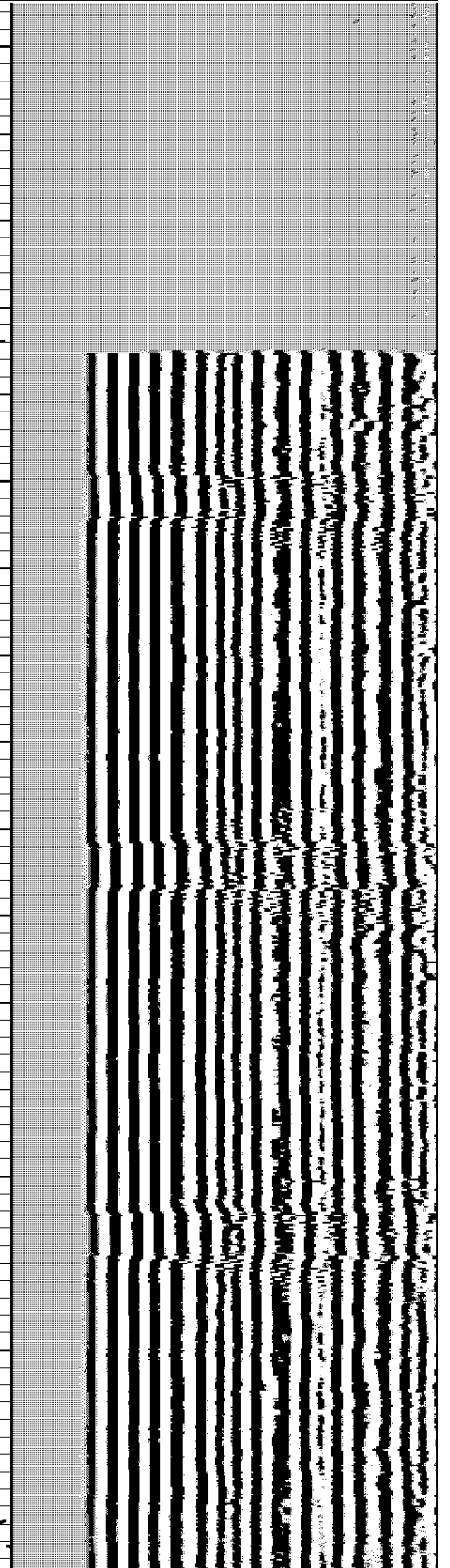
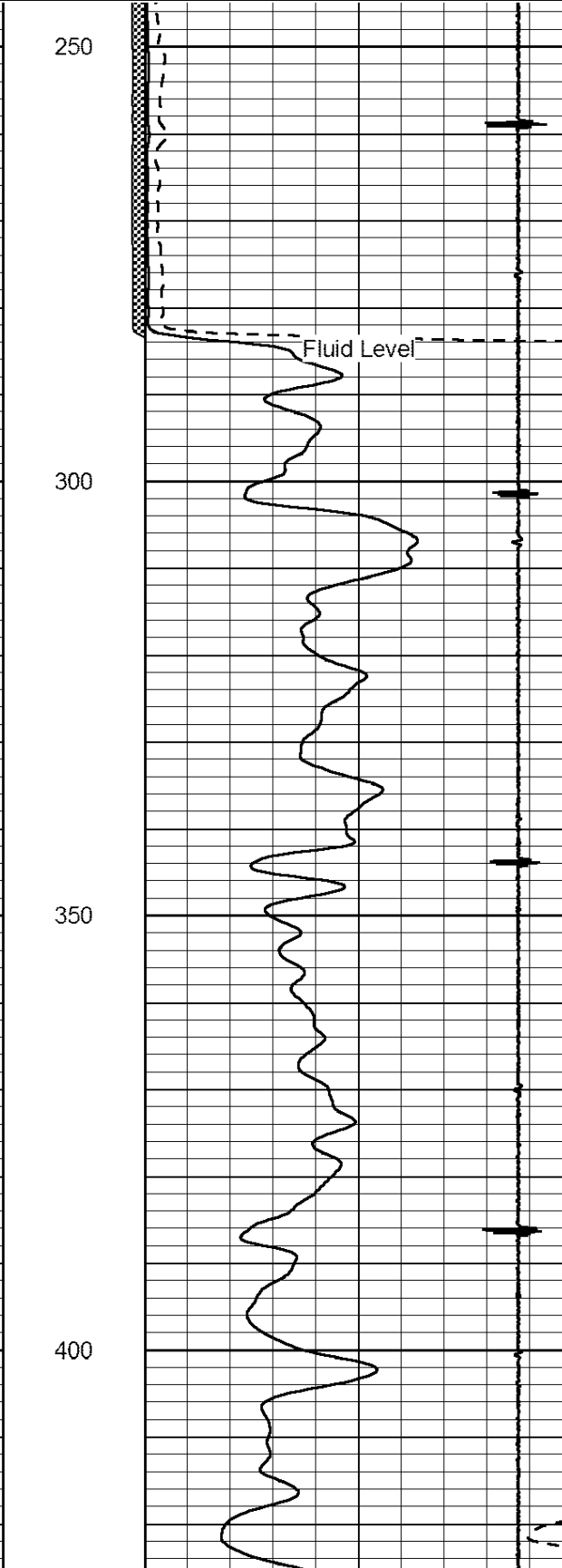
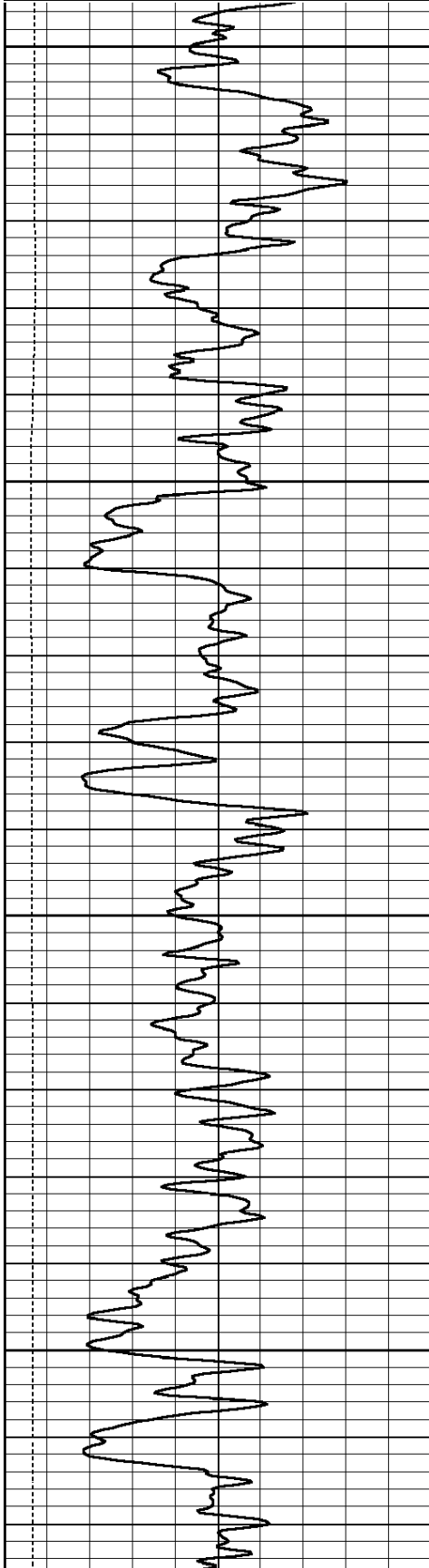
Thank you for using Log-Tech (785) 625-3858  
Antonino, KS., 2 South to Norfolk Road, .75 East  
South Into.

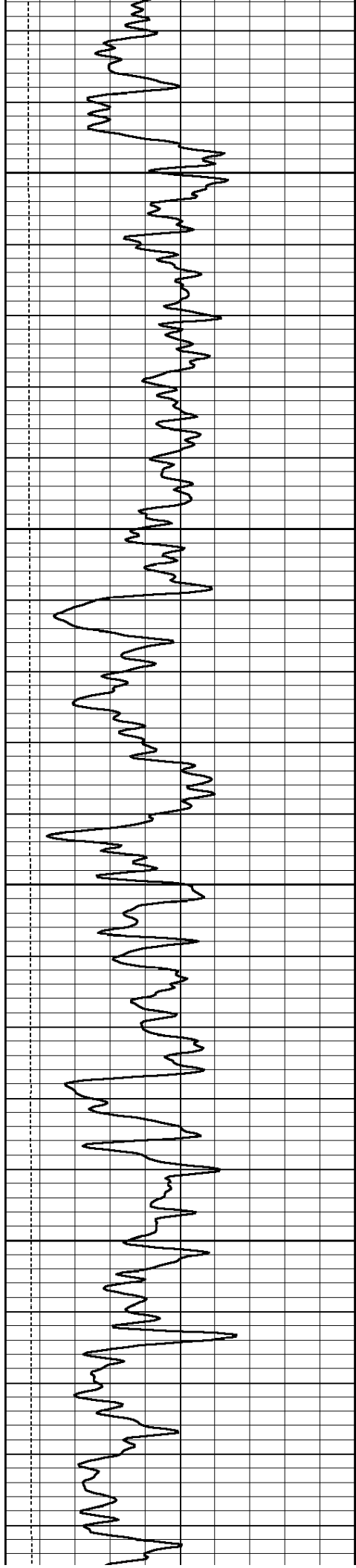


D.V. Tool @ 1185

Database File: hertelwolf2.db  
 Dataset Pathname: grcbl/run1/pass4  
 Presentation Format: cldig  
 Dataset Creation: Fri Mar 16 14:18:32 2012 by Log SCH 111116  
 Charted by: Depth in Feet scaled 1:240

0	GR (GAPI)	150	AMP3	0	Amplitude (mV)	100	200	Variable Density	1200
0	LTEN (lb)	5000	(mV)	0	Amplified Amplitude (mV)	20			
			-100 10	7	Collar Locator	-1			



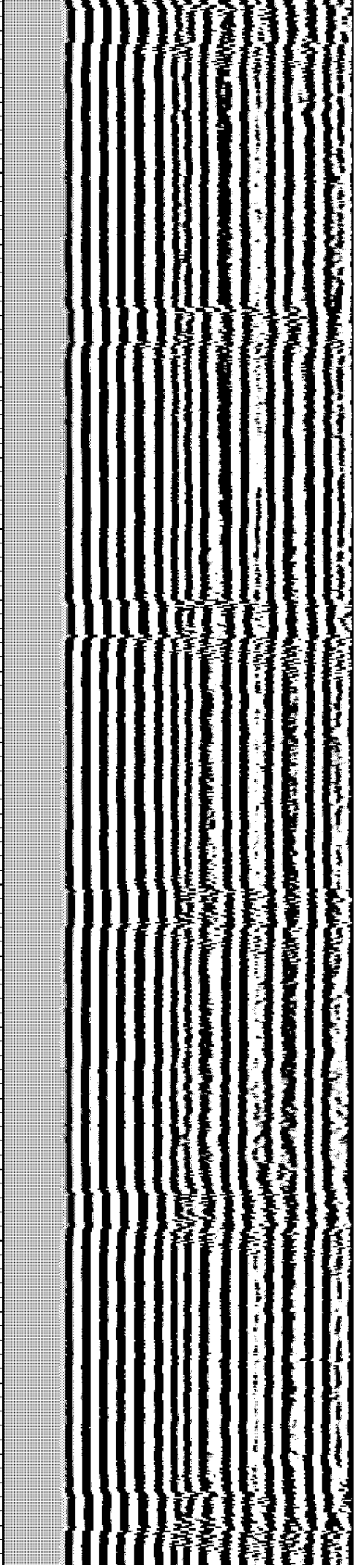
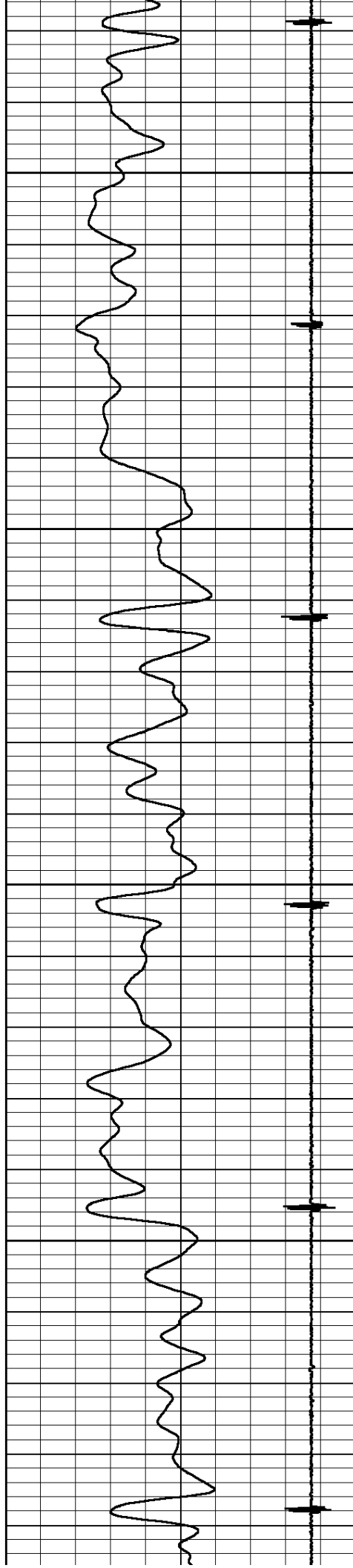


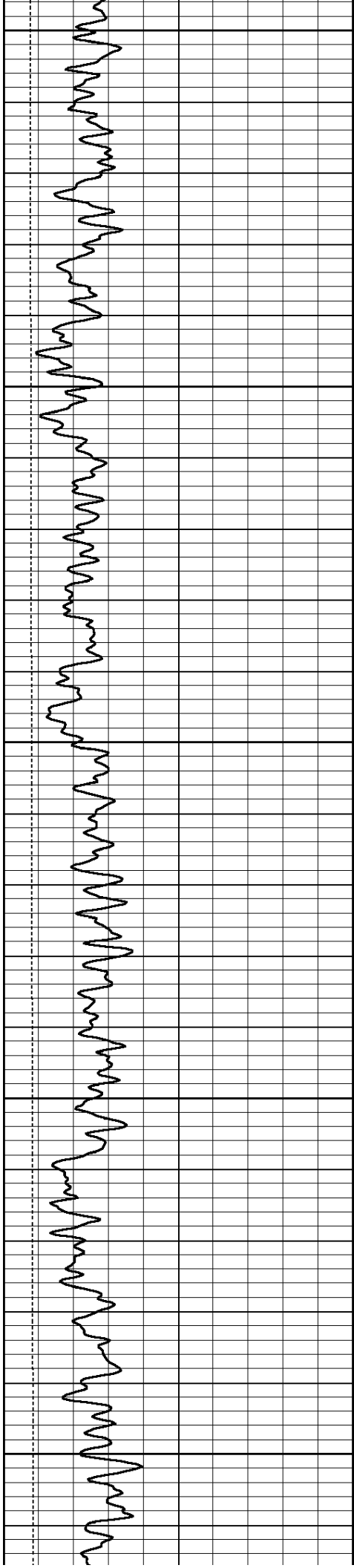
450

500

550

600





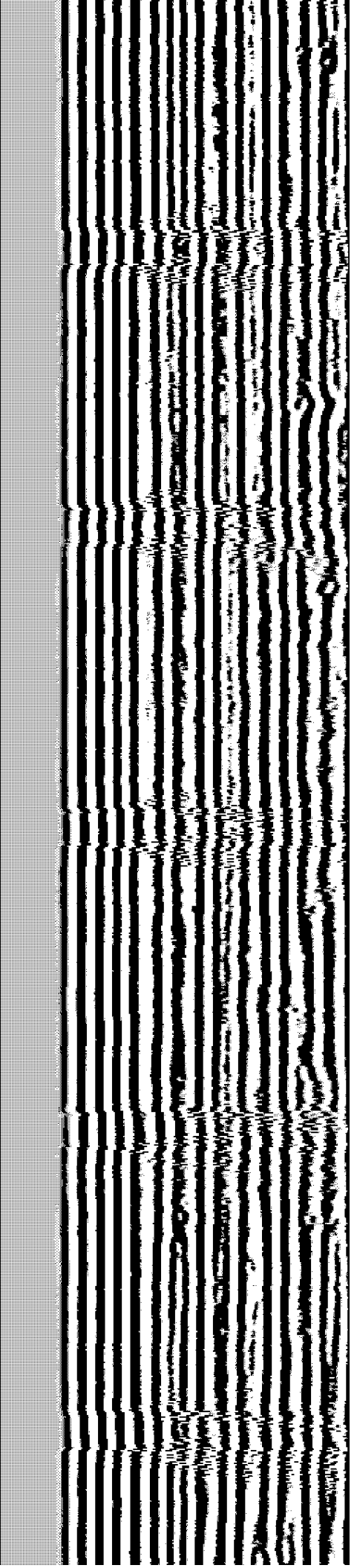
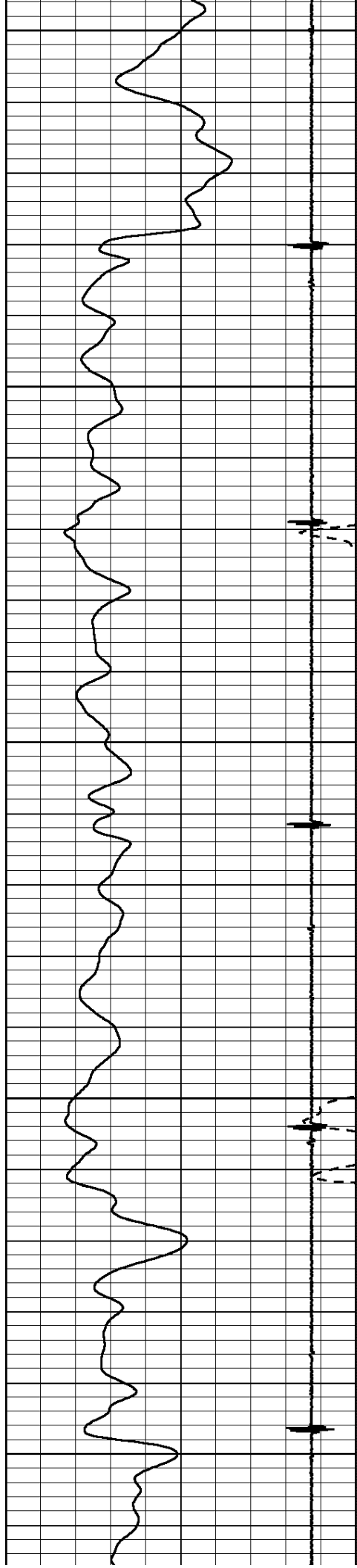
650

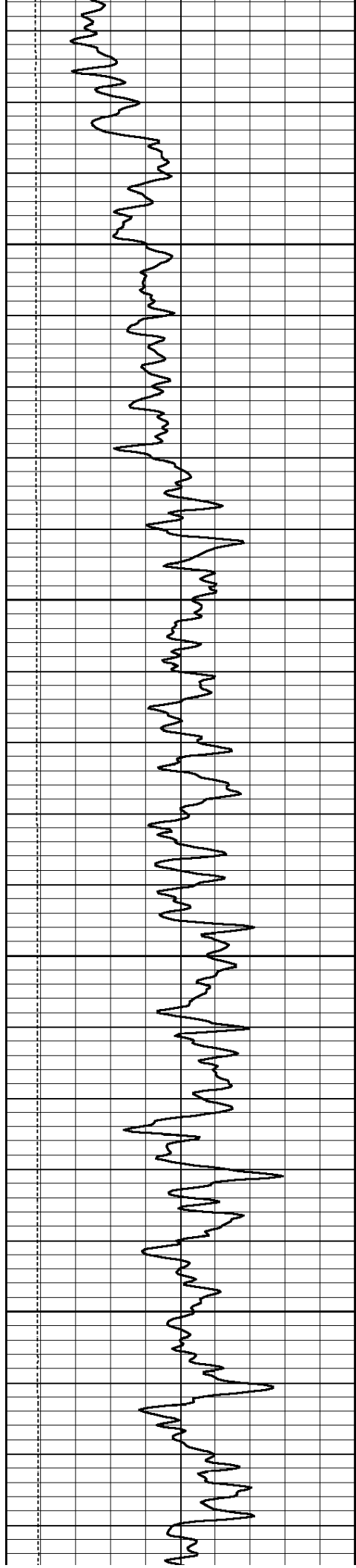
700

750

800

850



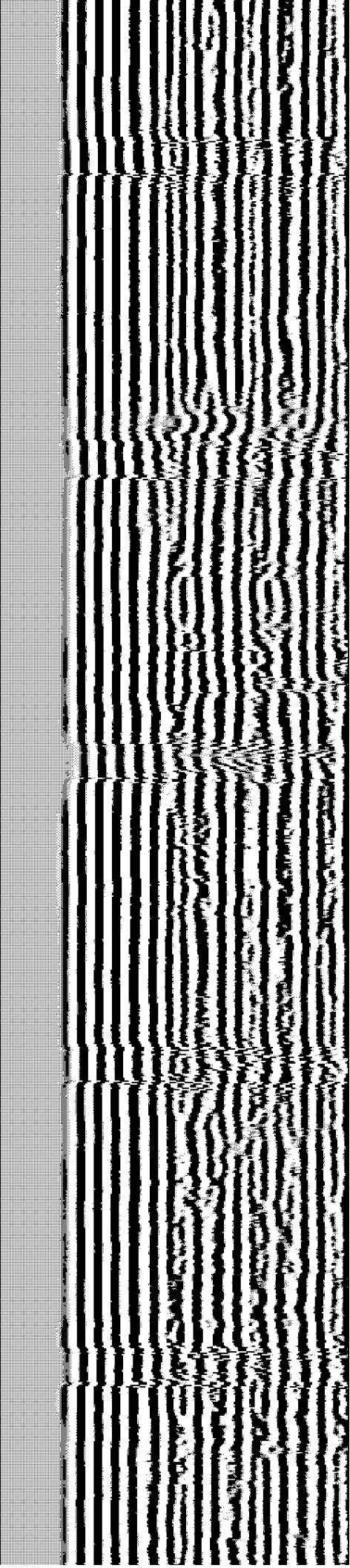
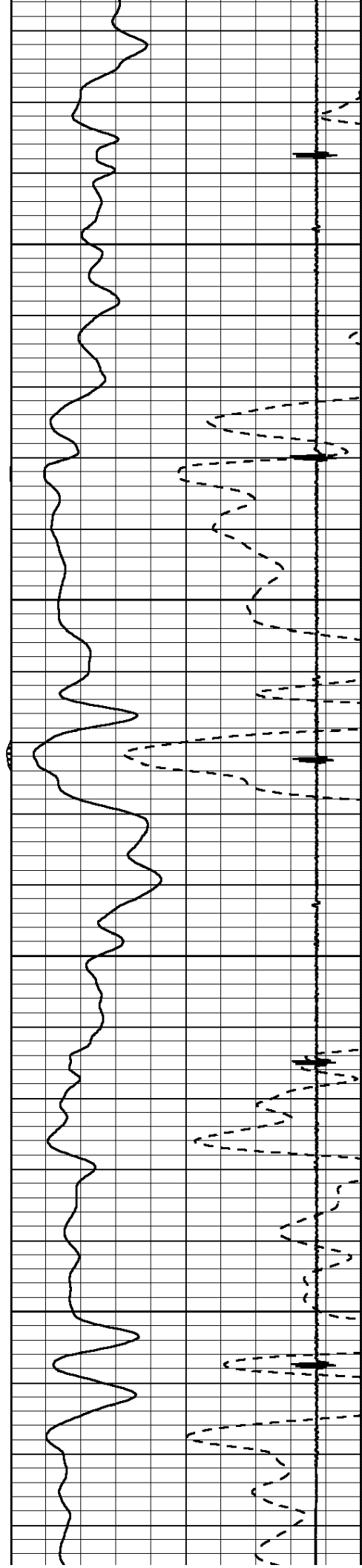


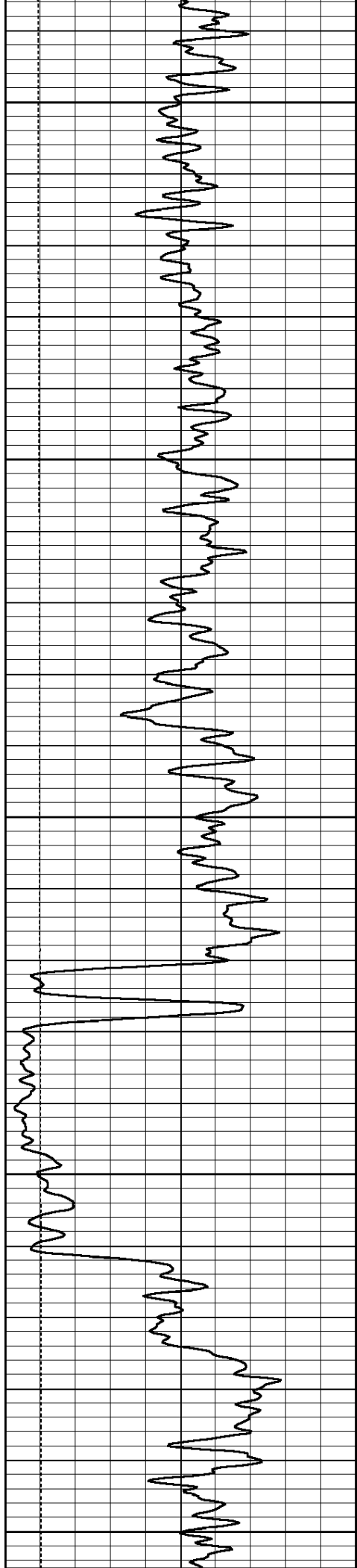
900

950

1000

1050





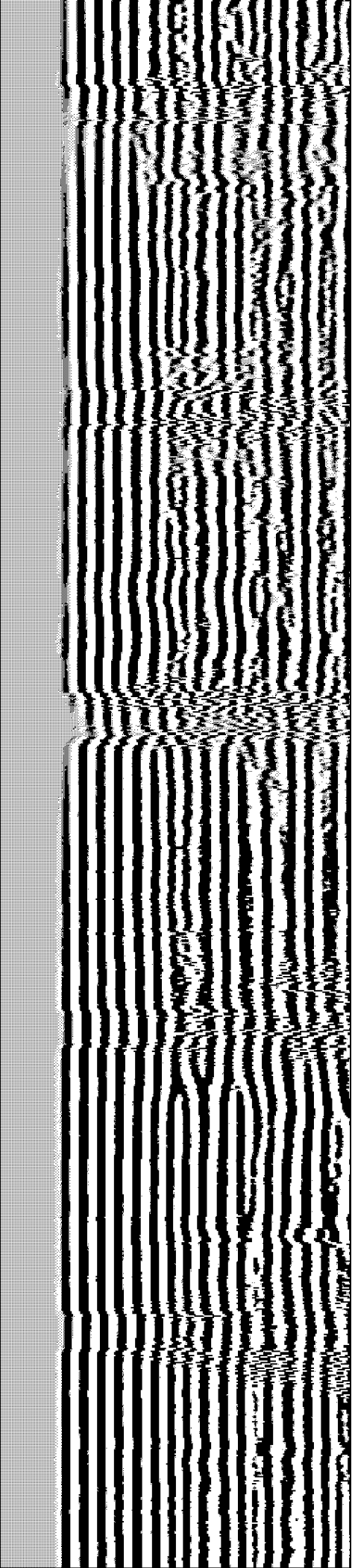
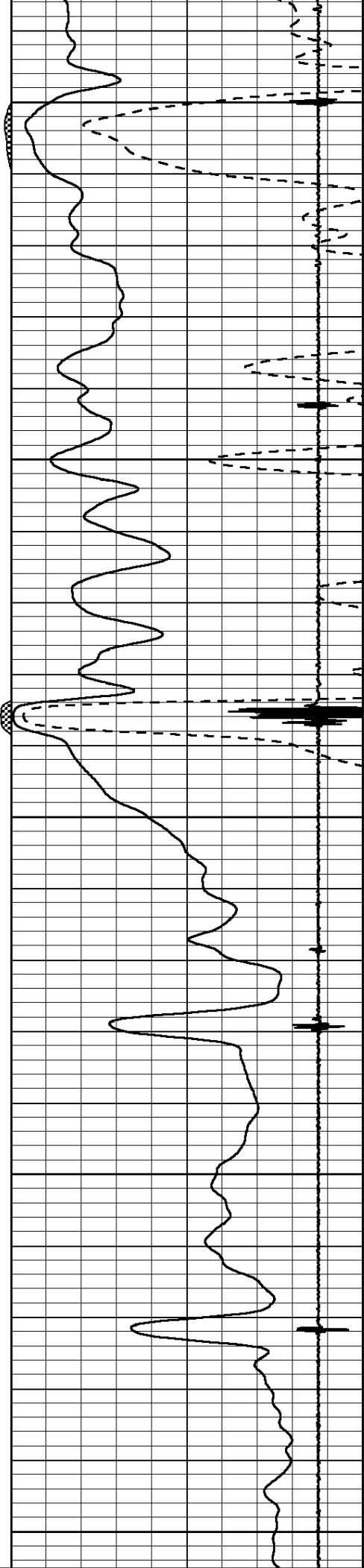
1100

1150

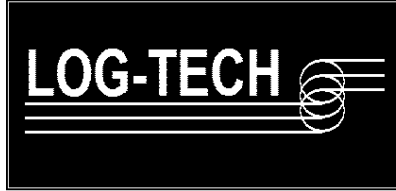
1200

1250

1300



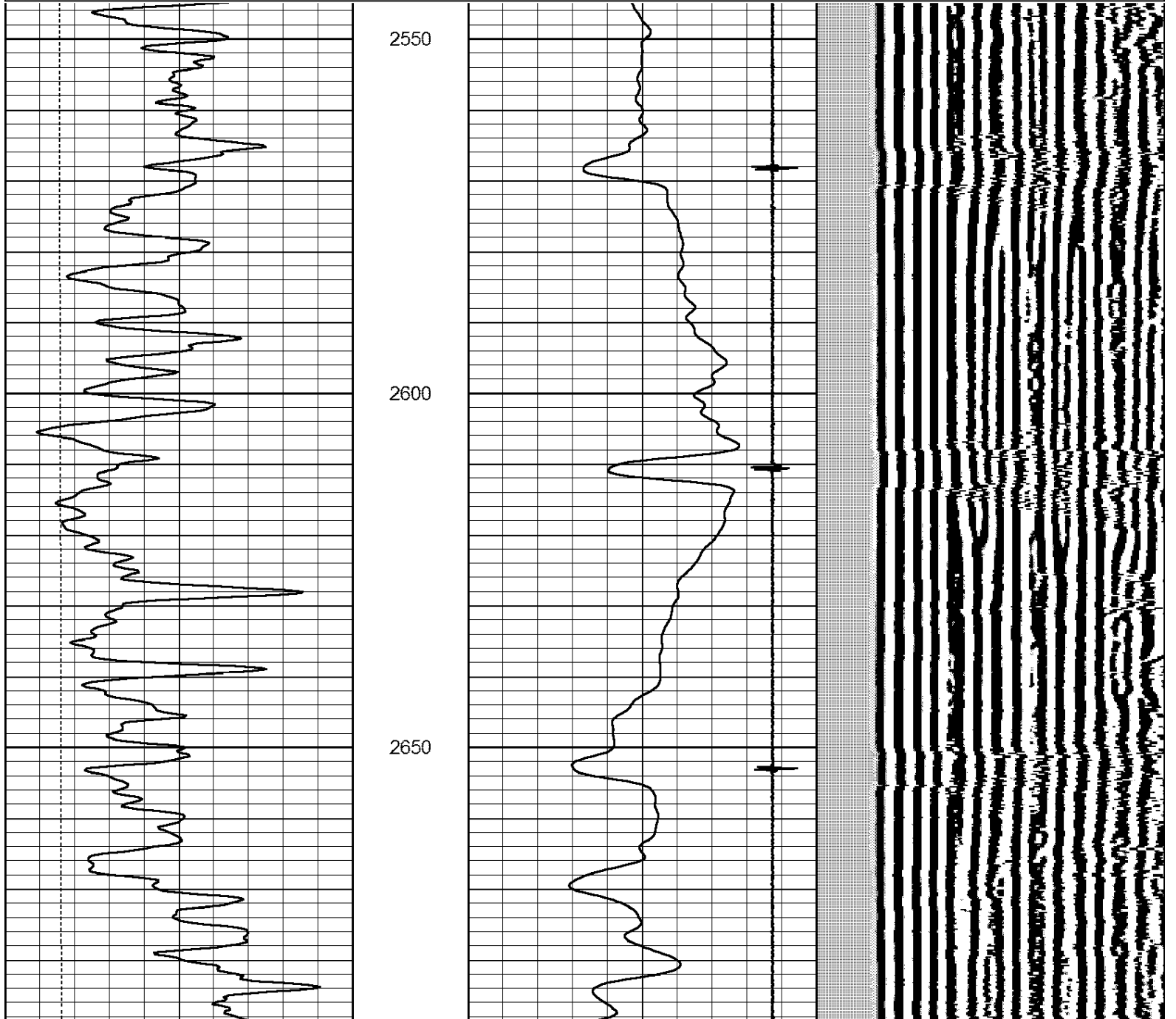
0	GR (GAPI)	150	AMP3	0	Amplitude (mV)	100	200	Variable Density	1200
0	LTEN (lb)	5000	(mV)	0	Amplified Amplitude (mV)	20			
			-100 10	7	Collar Locator	-1			

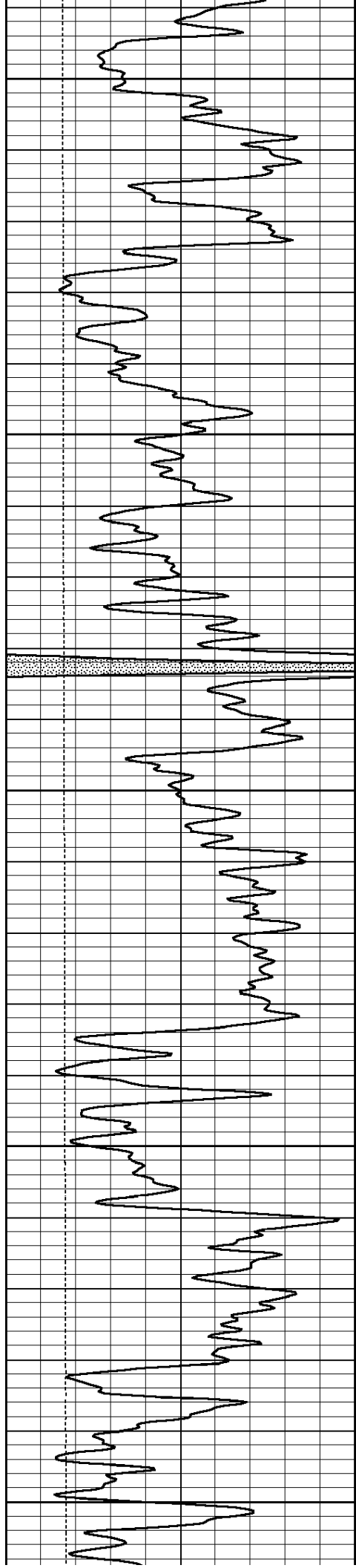


# Main Pass

Database File: hertelwolf2.db  
 Dataset Pathname: grcbl/run1/pass3.2  
 Presentation Format: cldig  
 Dataset Creation: Fri Mar 16 14:47:21 2012  
 Charted by: Depth in Feet scaled 1:240

0	GR (GAPI)	150	AMP3	0	Amplitude (mV)	100	200	Variable Density	1200
0	LTEN (lb)	5000	(mV)	0	Amplified Amplitude (mV)	20			
			-100 10	7	Collar Locator	-1			





2700

Top of Cement

2750

2800

2850

2900

