



**SUPERIOR
Hays,
Kansas**

**COMPENSATED
DENSITY/NEUTRON
PE LOG**

Company WHITE EXPLORATION, INC.
Well RJD UNIT #1
Field
County HODGEMAN
State KANSAS

Company WHITE EXPLORATION, INC.
Well RJD UNIT #1
Field
County HODGEMAN State KANSAS

Location: API #: 05-083-21713-00
SEC 1 TWP 23S RGE 24W
200' FNL & 1970' FWL
N/2 - N/2 - NE - NW
Permanent Datum GROUND LEVEL Elevation 2325
Log Measured From KELLY BUSHING 5' A.G.L.
Drilling Measured From KELLY BUSHING
Other Services
DIL
SONIC/MEL
Elevation
K.B. 2330
D.F. 2328
G.L. 2325

Date	7-6-11		
Run Number	ONE		
Depth Driller	4718		
Depth Logger	4721		
Bottom Logged Interval	2697		
Top Log Interval	1400		
Casing Driller	261		
Casing Logger	259		
Bit Size	7.875		
Type Fluid in Hole	CHEMICAL MUD	CHLORIDES 3100	
Density / Viscosity	9.7 / 46		
pH / Fluid Loss	9.5 / 11.6		
Source of Sample	FLOWLINE		
Rim @ Meas. Temp	0.70 @ 92F		
Rmf @ Meas. Temp	0.53 @ 92F		
Rmc @ Meas. Temp	0.84 @ 92F		
Source of Rmf / Rmc	MEASURED		
Rim @ BHT	0.53 @ 122F		
Time Circulation Stopped	2 HOURS		
Time Logger on Bottom			
Maximum Recorded Temperature	122F		
Equipment Number	860		
Location	HAYS, KS.		
Recorded By	JEFF GRONEWEG		
Witnessed By	LARRY FRIEND		

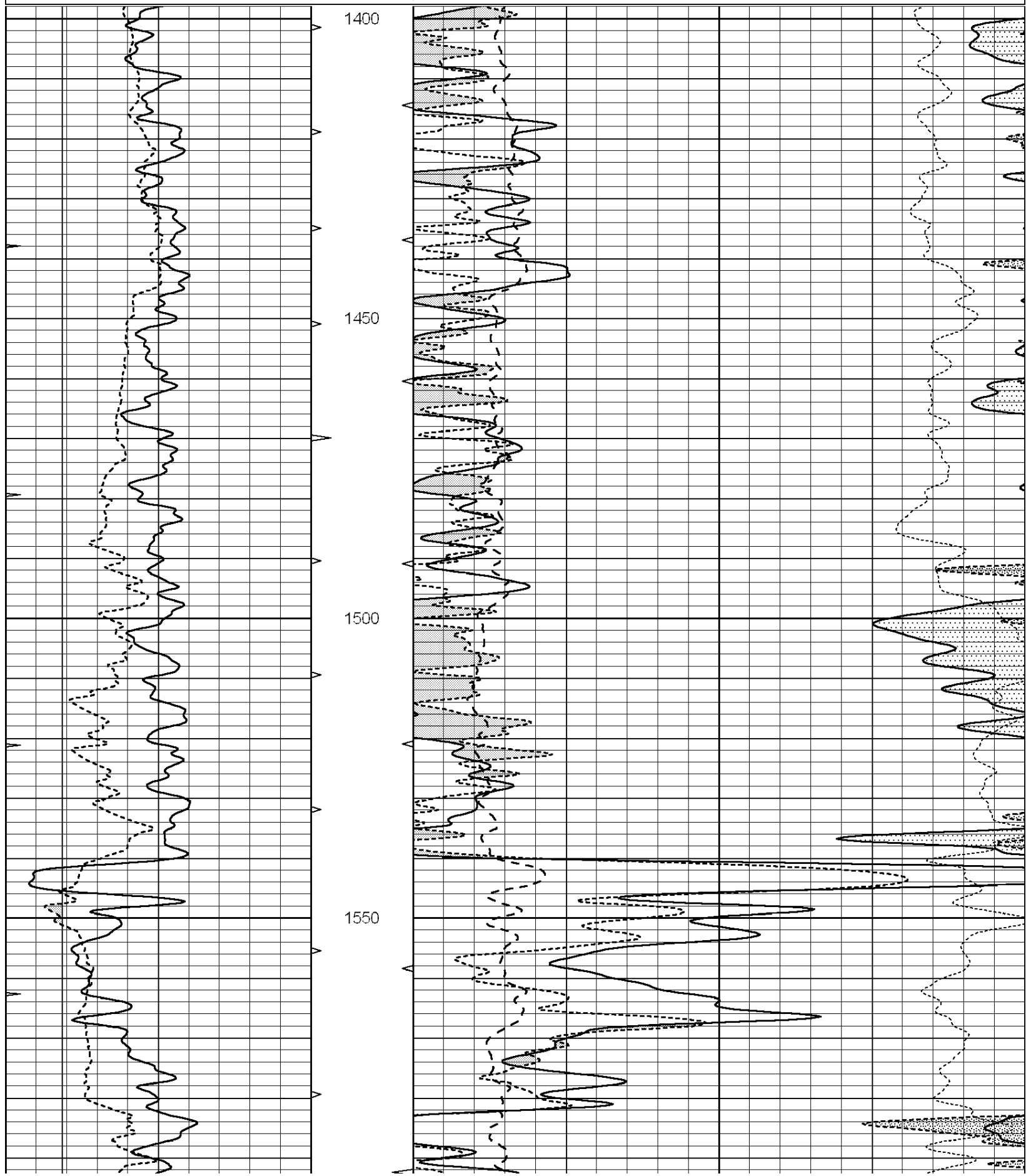
<<< Fold Here >>>

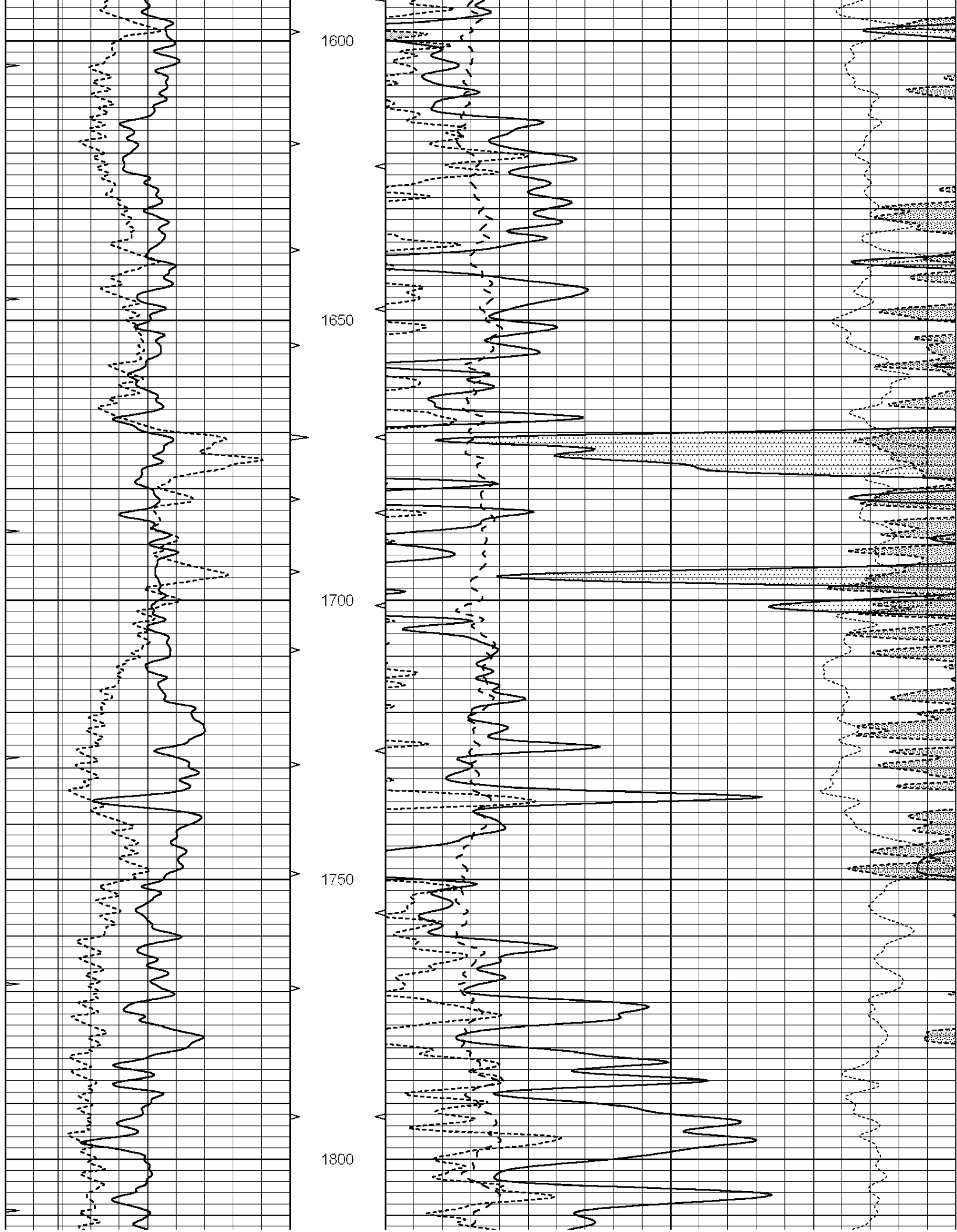
All interpretations are opinions based on inferences from electrical or other measurements and we cannot and do not guarantee the accuracy or correctness of any interpretation, and we shall not, except in the case of gross or willful negligence on our part, be liable or responsible for any loss, costs, damages, or expenses incurred or sustained by anyone resulting from any interpretation made by any of our officers, agents or employees. These interpretations are also subject to our general terms and conditions set out in our current Price Schedule.

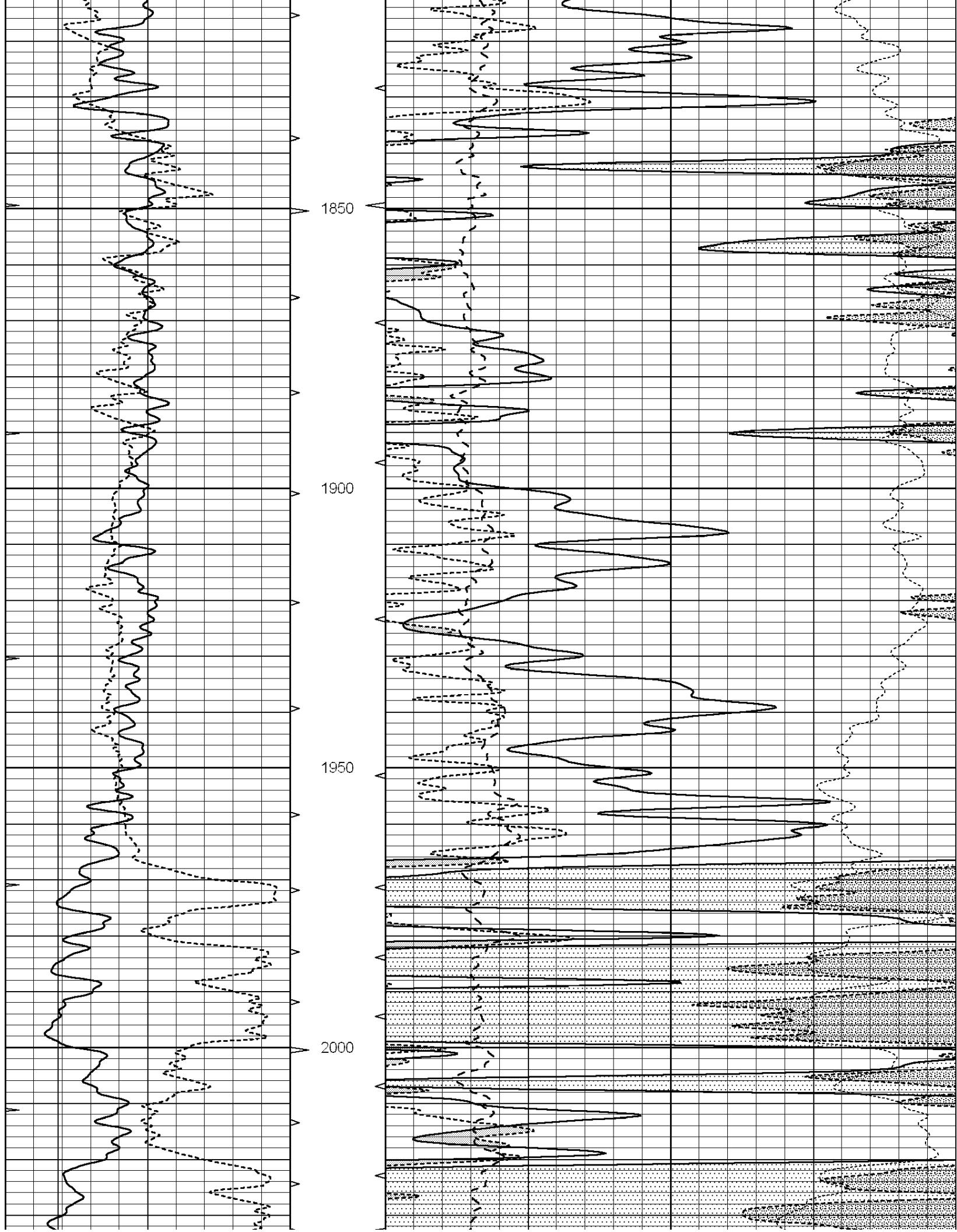
Comments

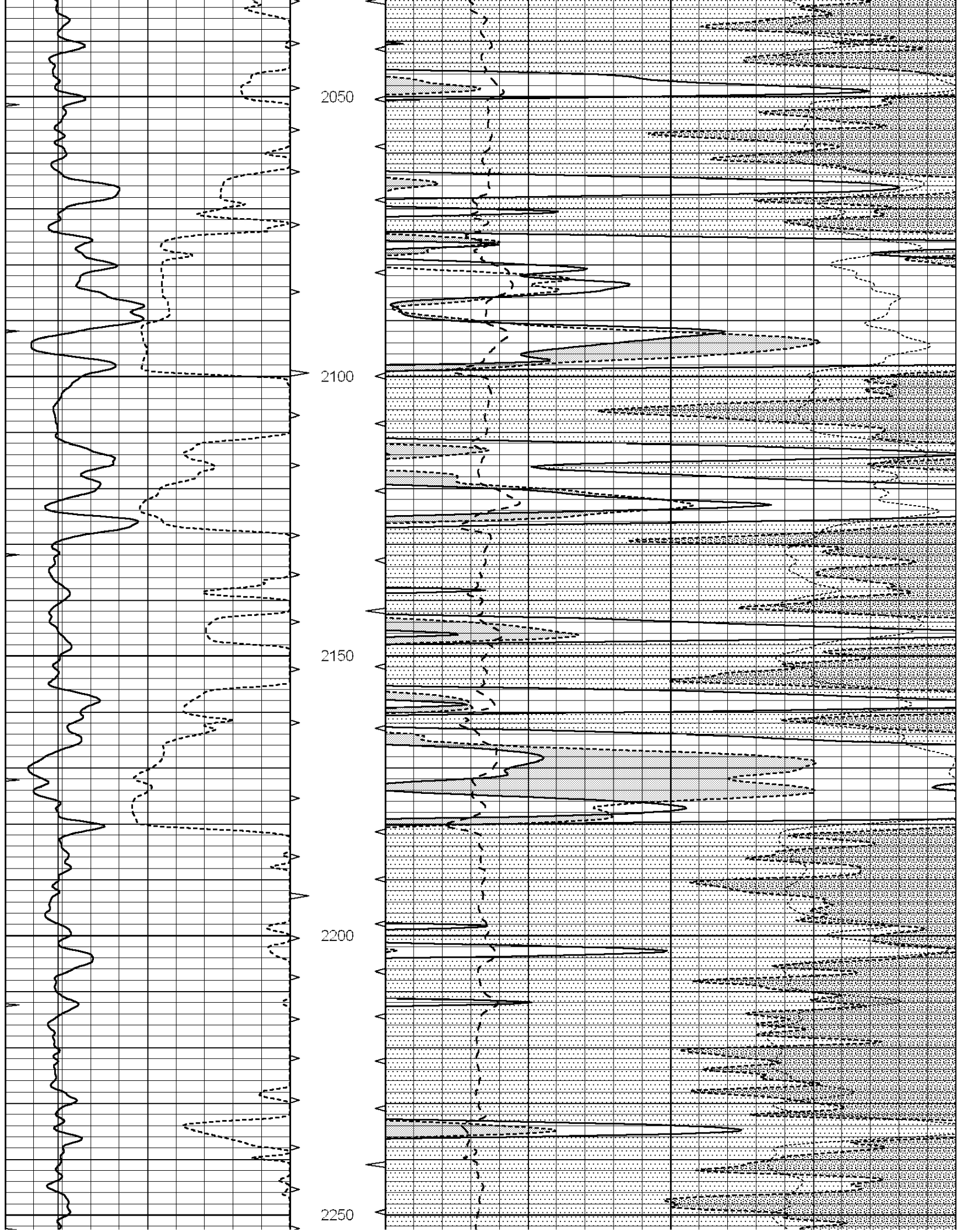
SUPERIOR WELL SERVICES
 785-628-6395
THANK YOU FOR YOUR BUSINESS
 DIRECTIONS: WEST EDGE OF JETMORE, KS - 1/2 MILE SOUTH TO T IN ROAD - 1/4 MILE WEST
 NORTH & WEST INTO

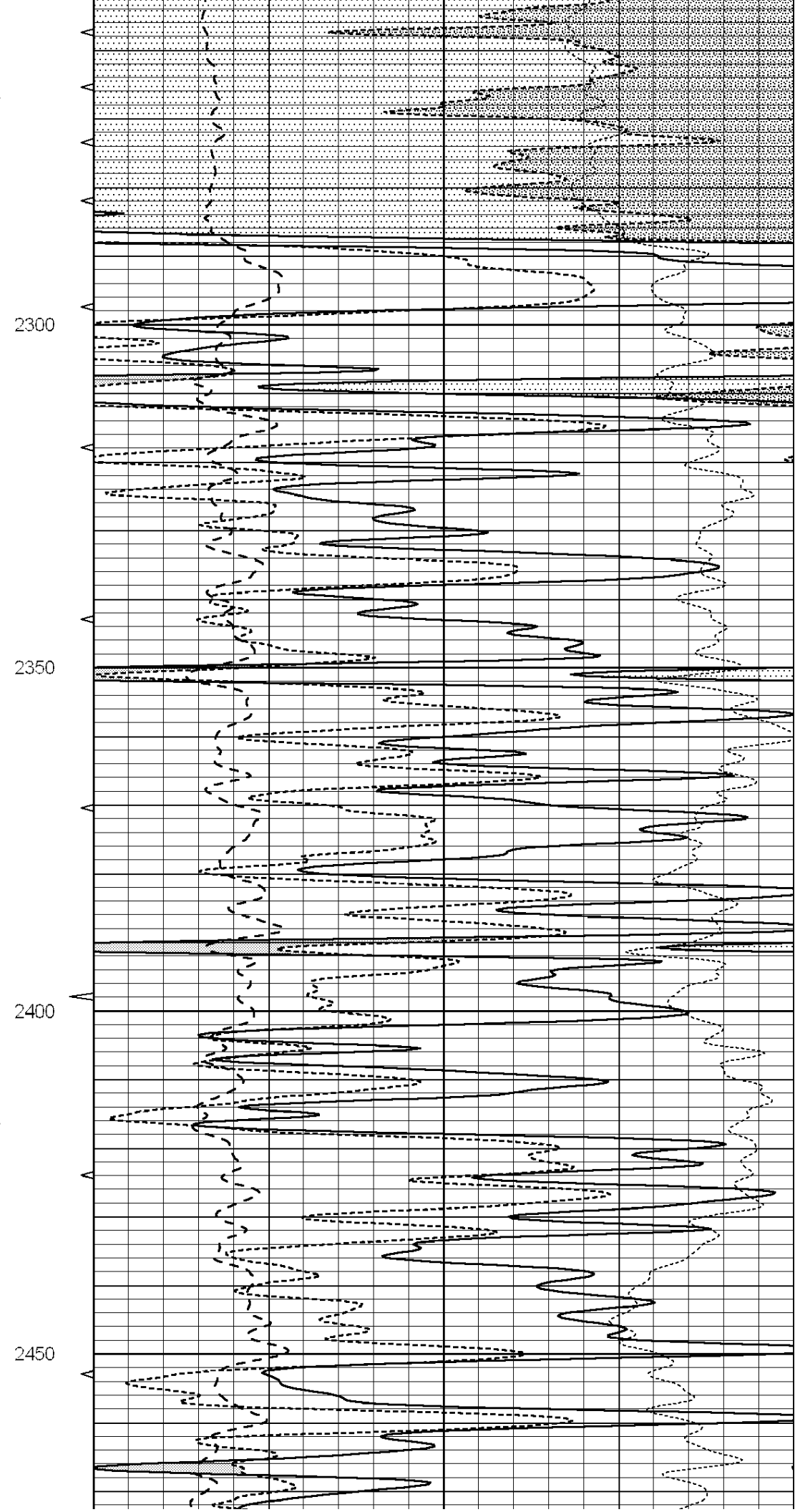
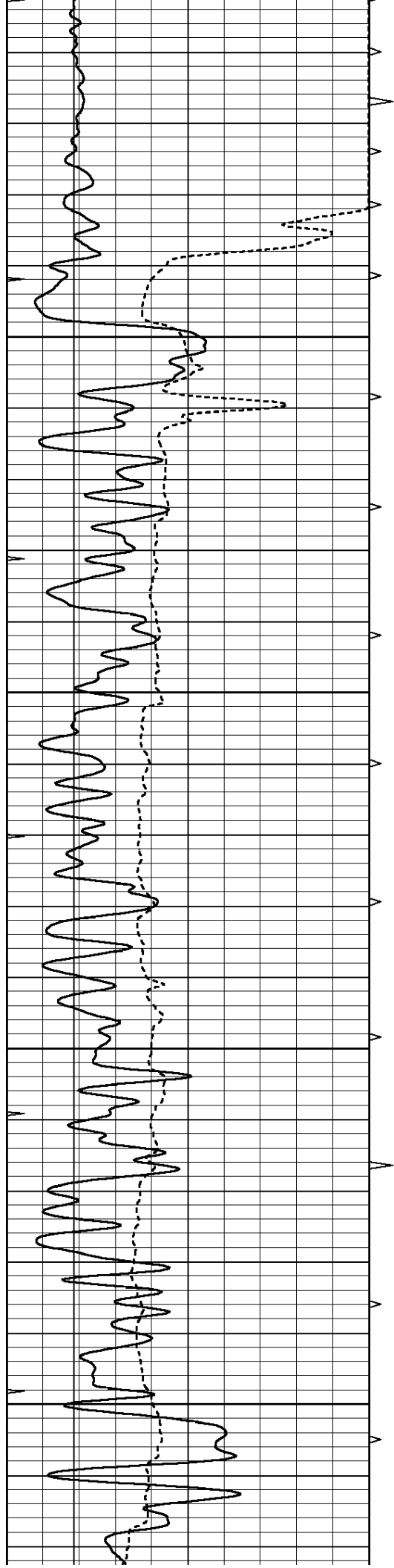
0	GAMMA RAY (GAPI)	150	ABHV	30	COMPENSATED DENSITY (pu)		-10		
6	CALIPER (in)	16	10 (ft3)	0	30	COMPENSATED NEUTRON (pu)		-10	
0	MINMK	20	TBHV	0	PE	10	-0.25	CORRECTION (g/cc)	0.25
			0 (ft3)	10					

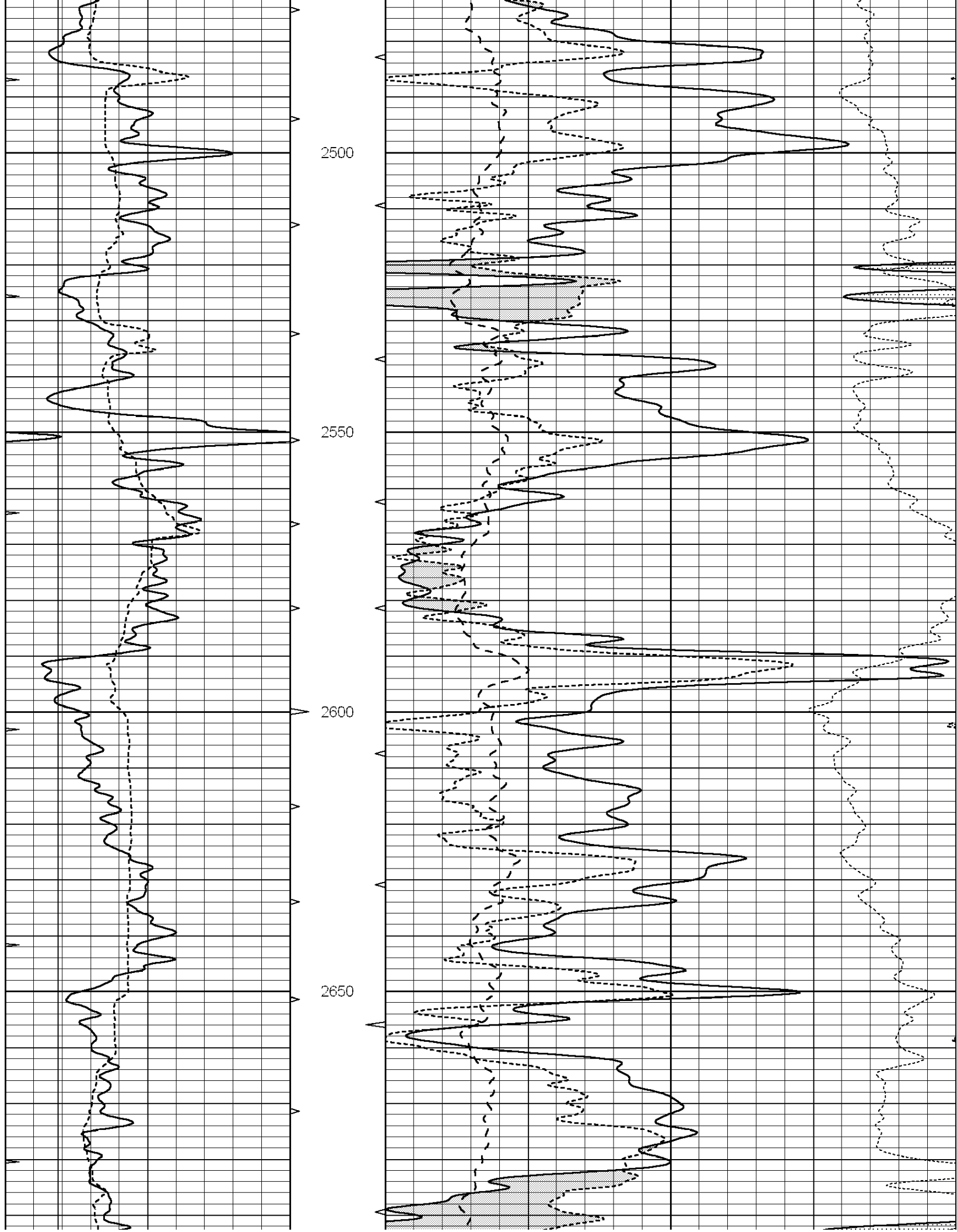


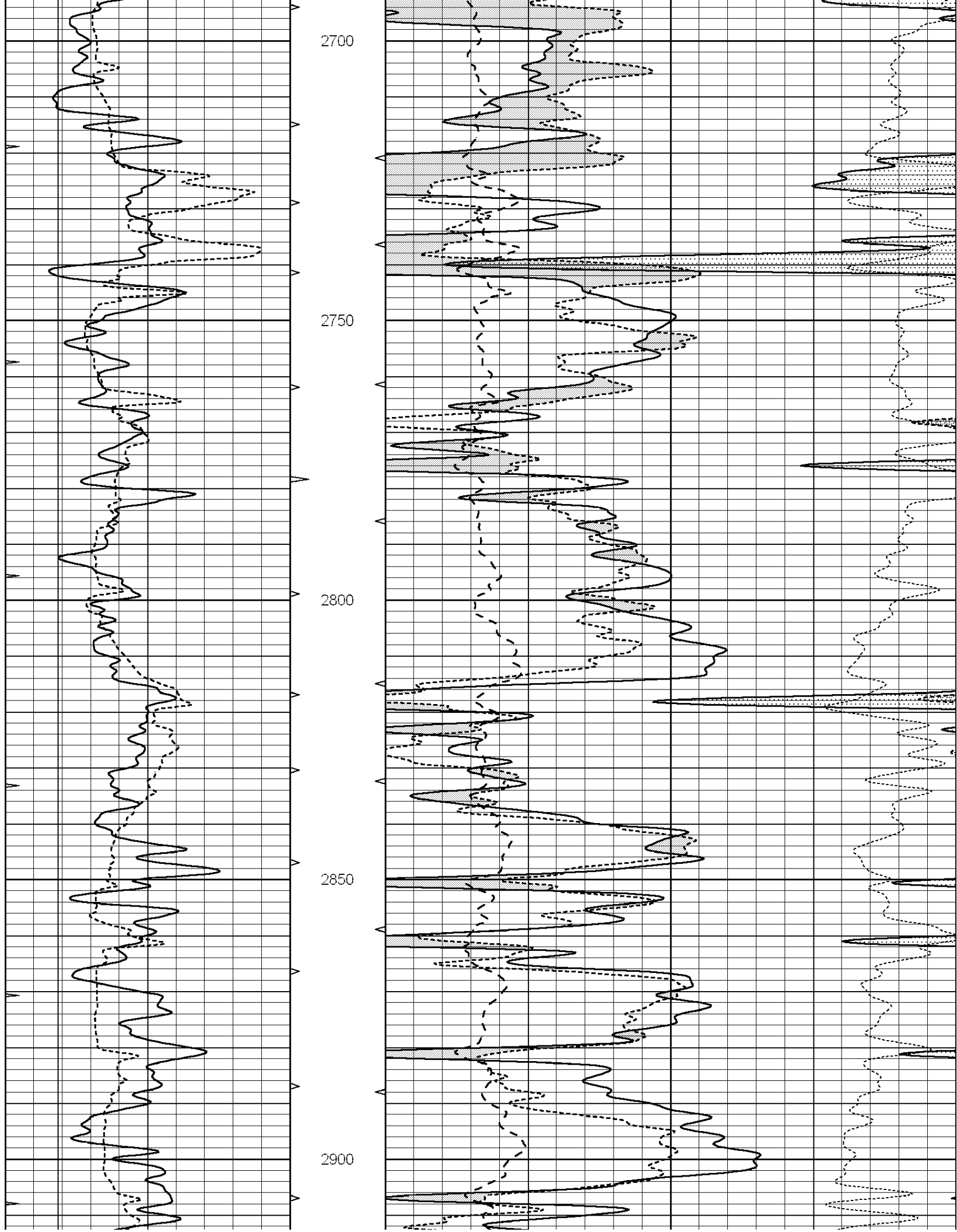


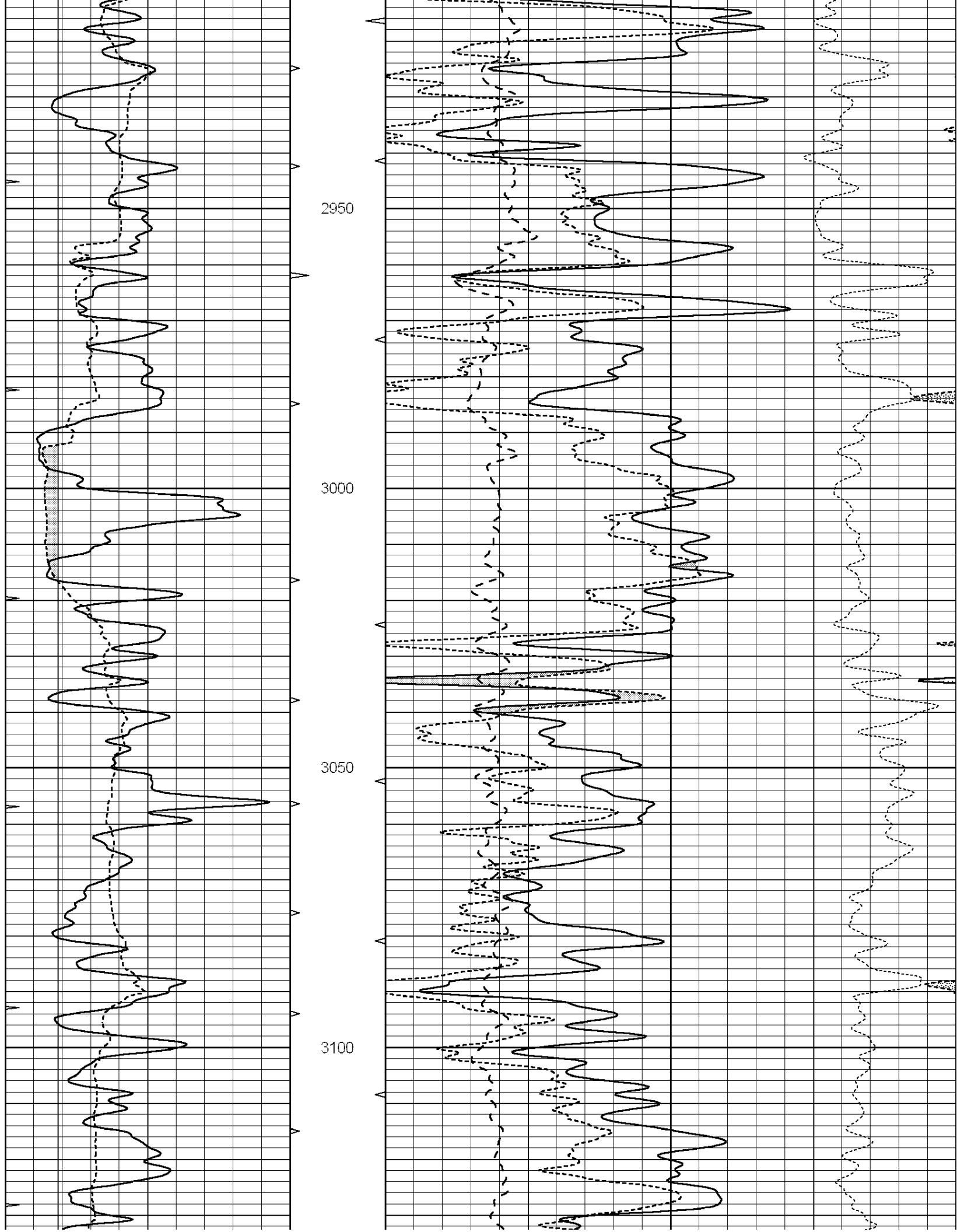


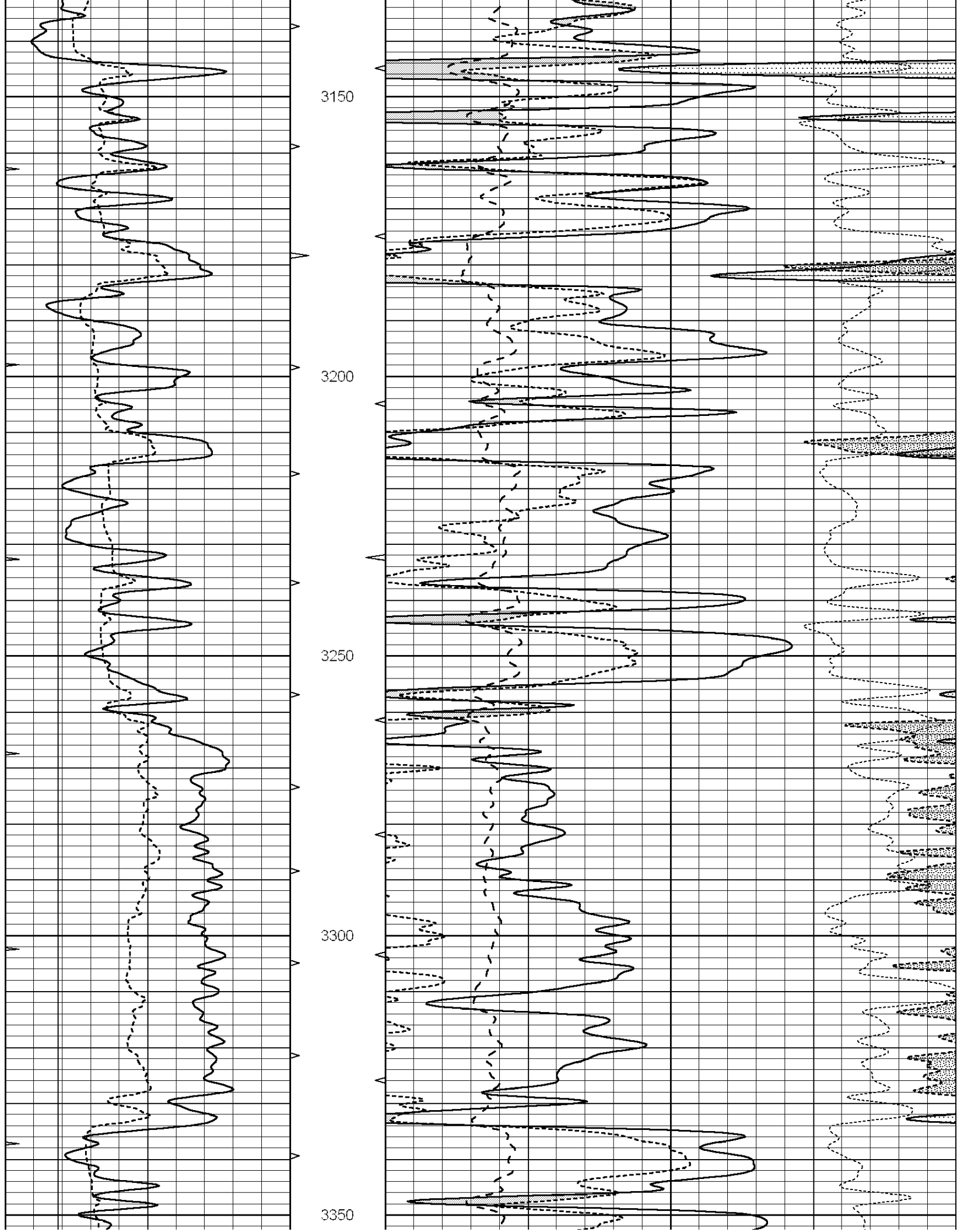


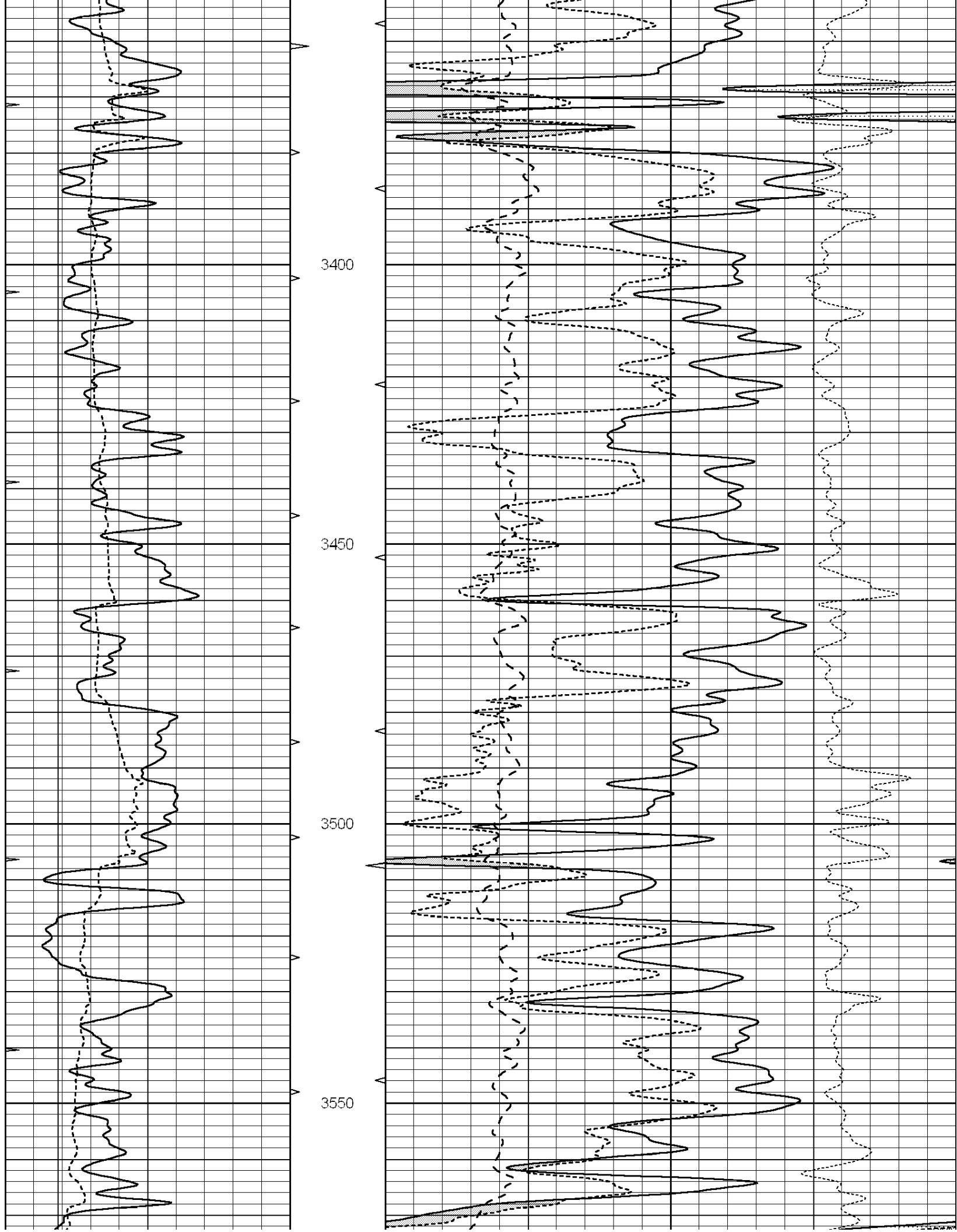


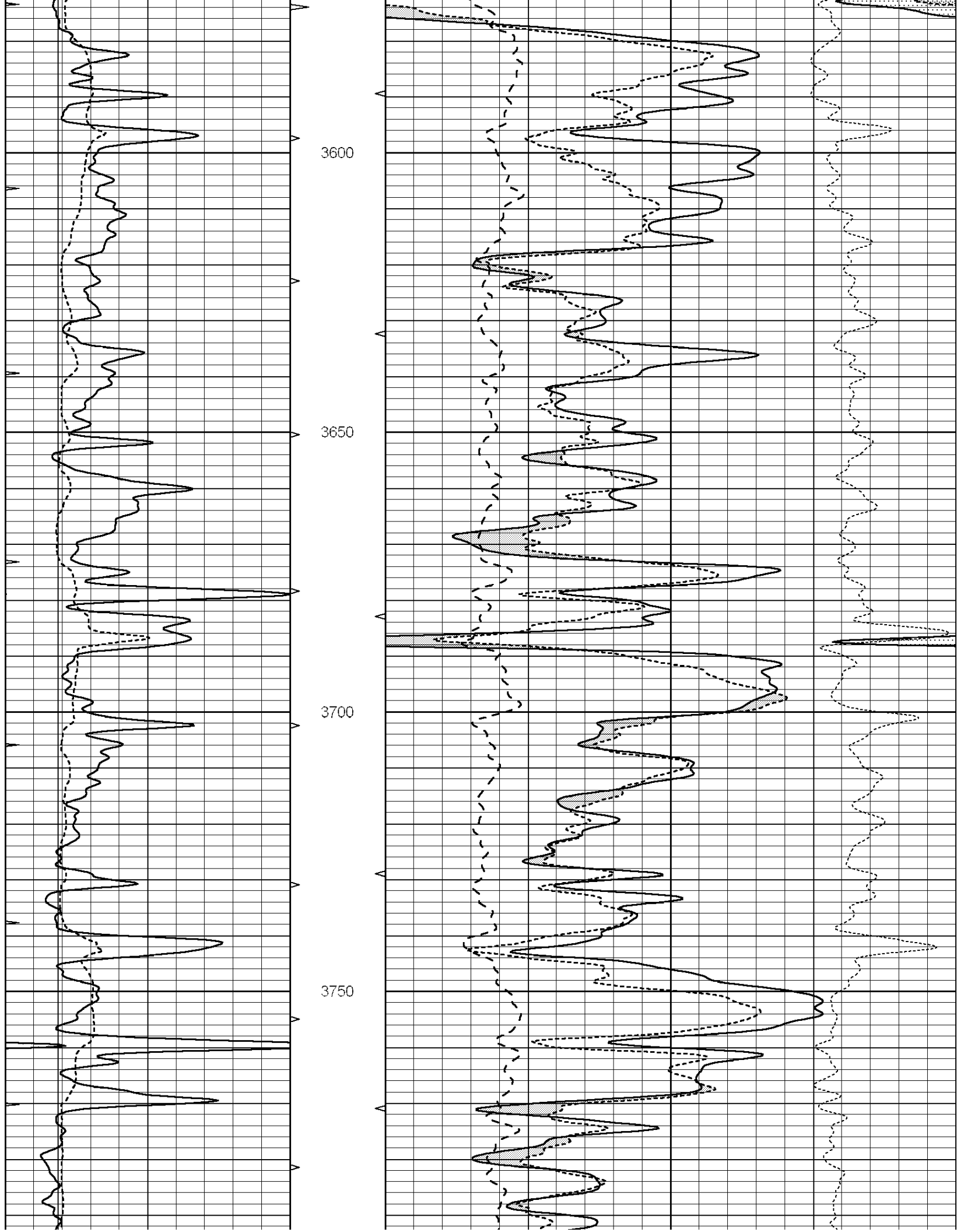


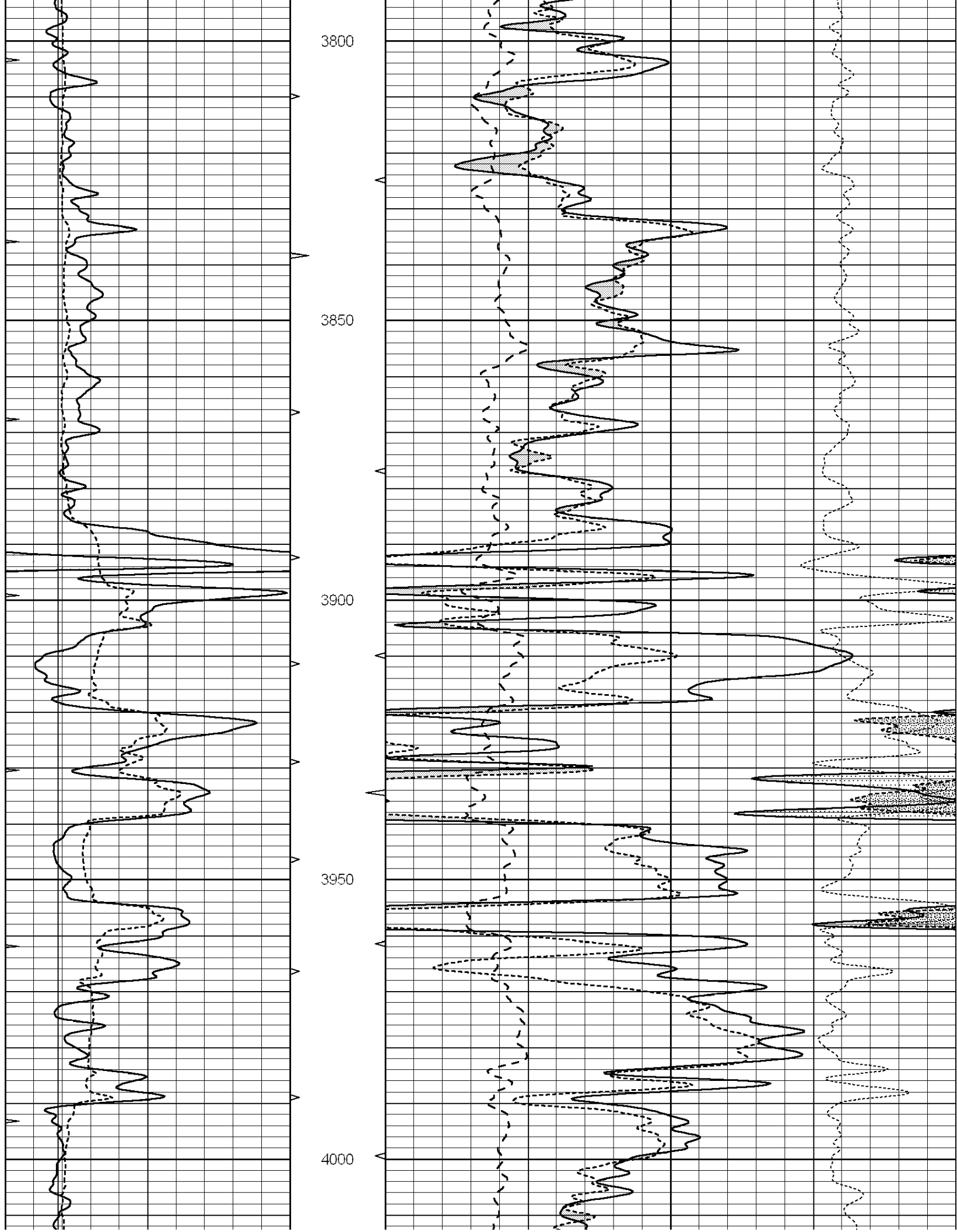


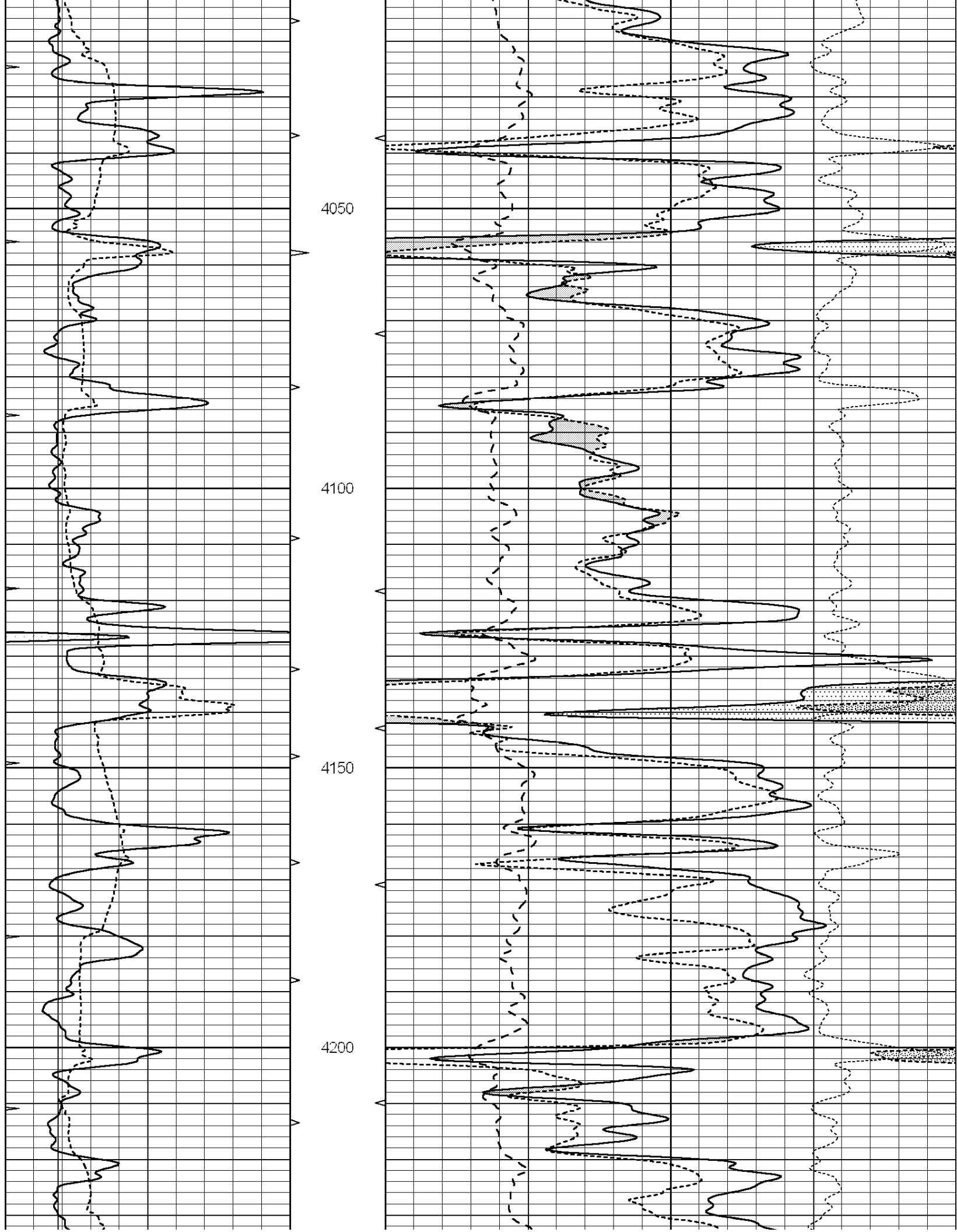


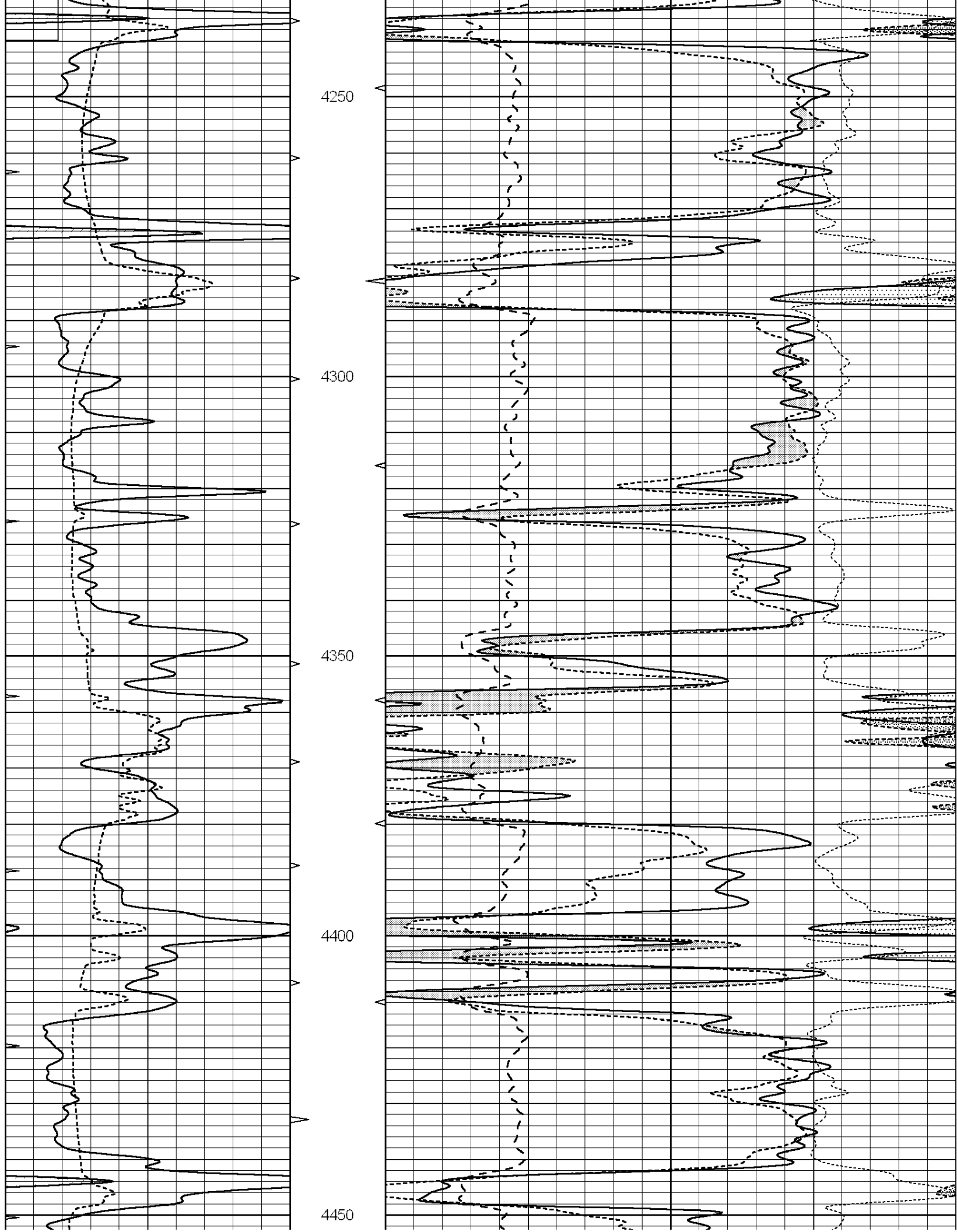


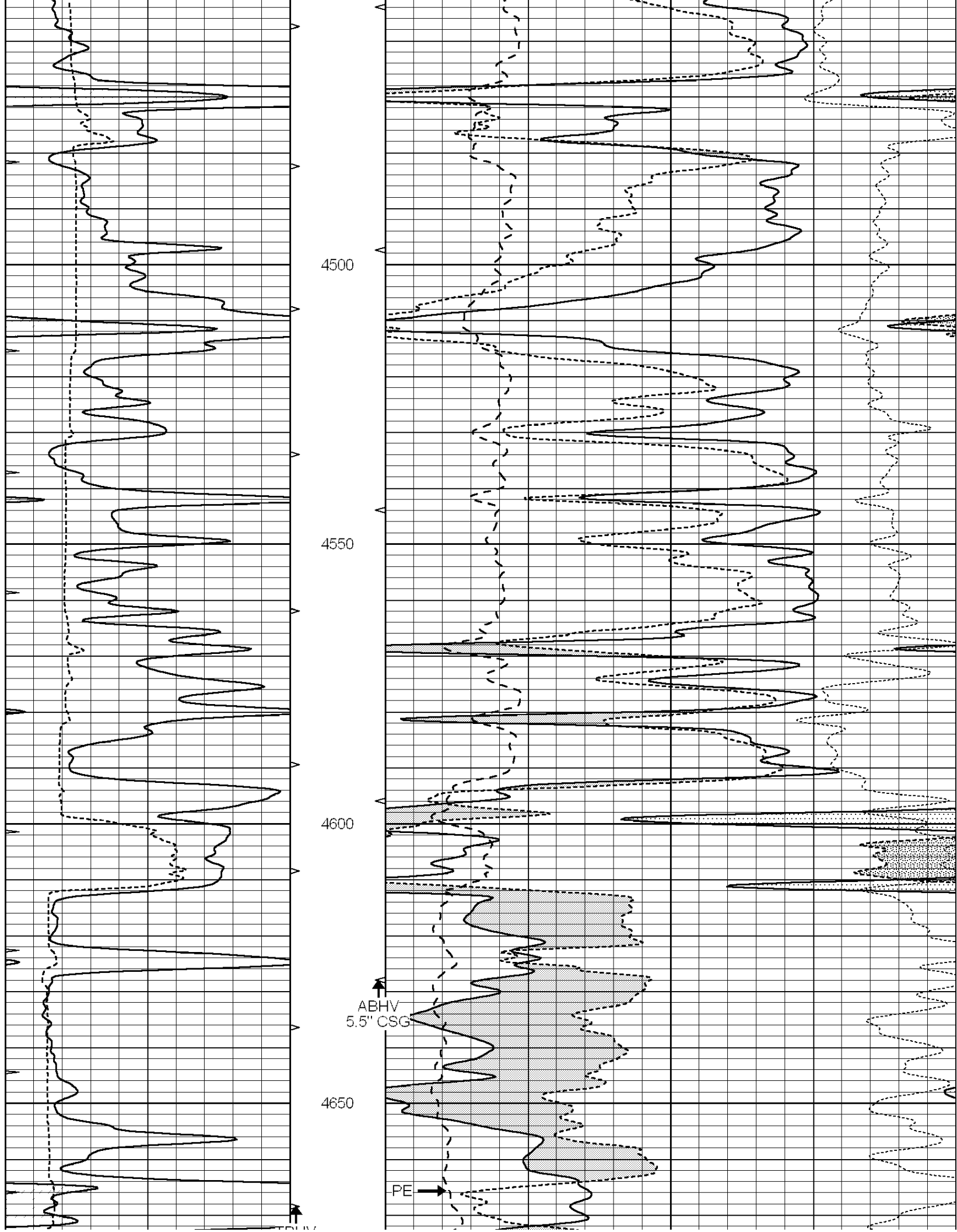


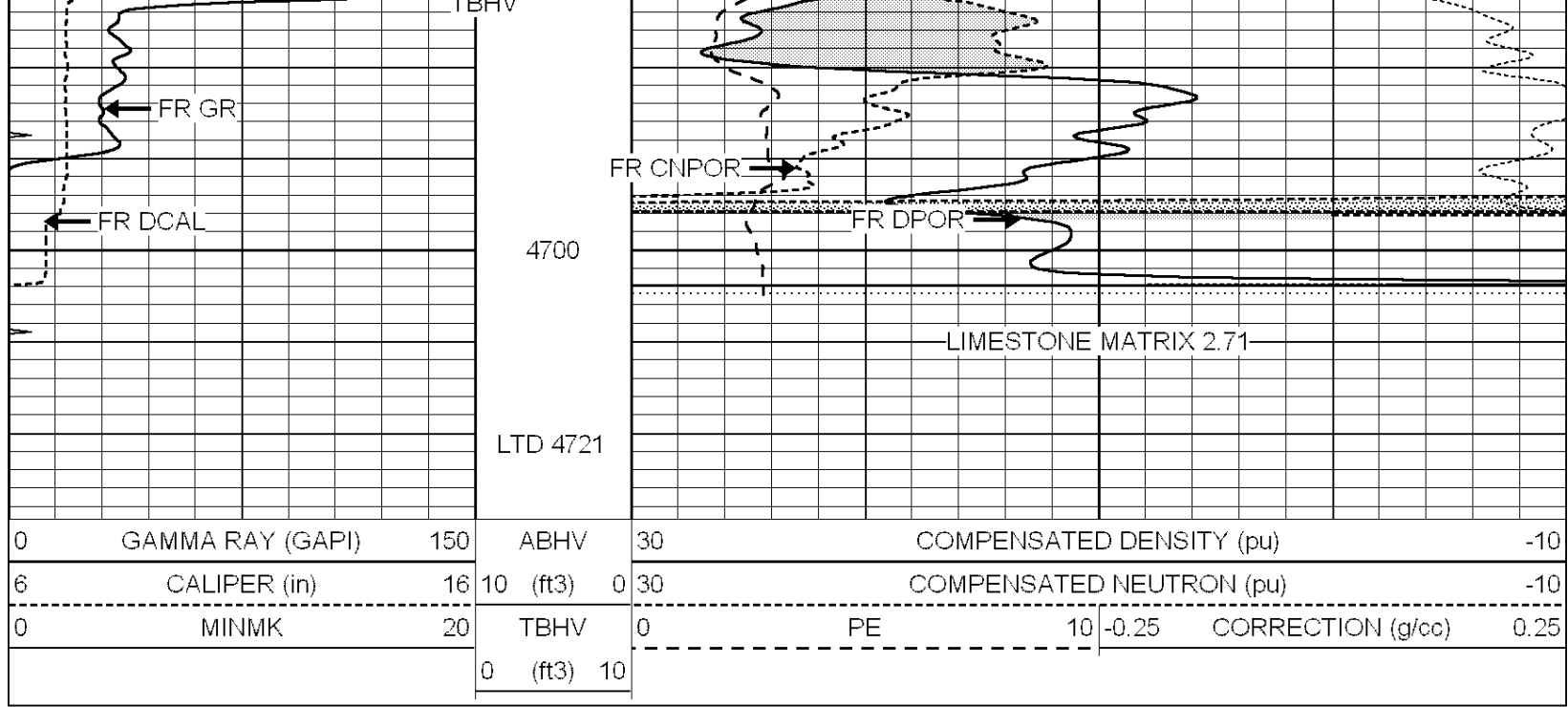












0	GAMMA RAY (GAPI)	150	ABHV	30	COMPENSATED DENSITY (pu)		-10
6	CALIPER (in)	16	10 (ft3)	0 30	COMPENSATED NEUTRON (pu)		-10
0	MINMK	20	TBHV	0	PE	10	-0.25 CORRECTION (g/cc) 0.25
			0 (ft3)	10			

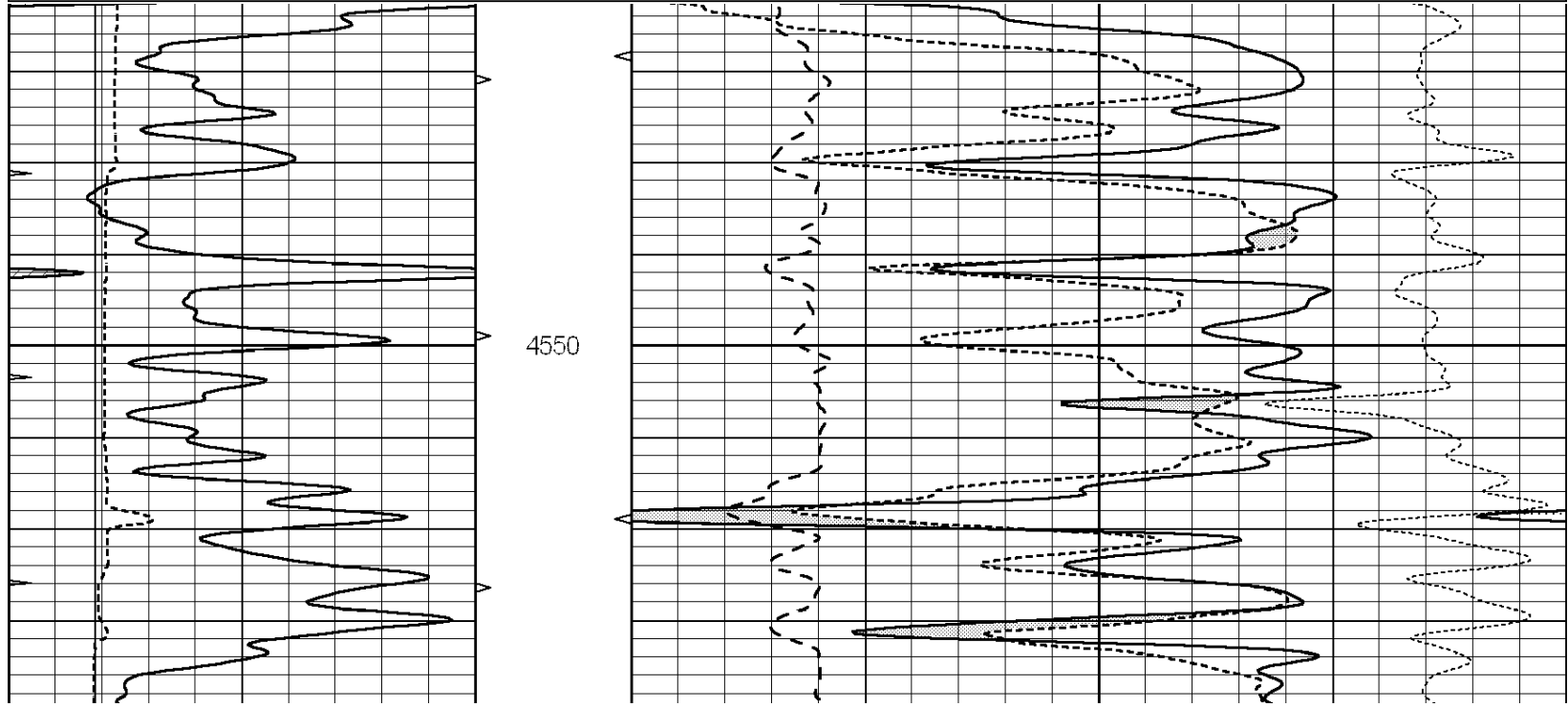


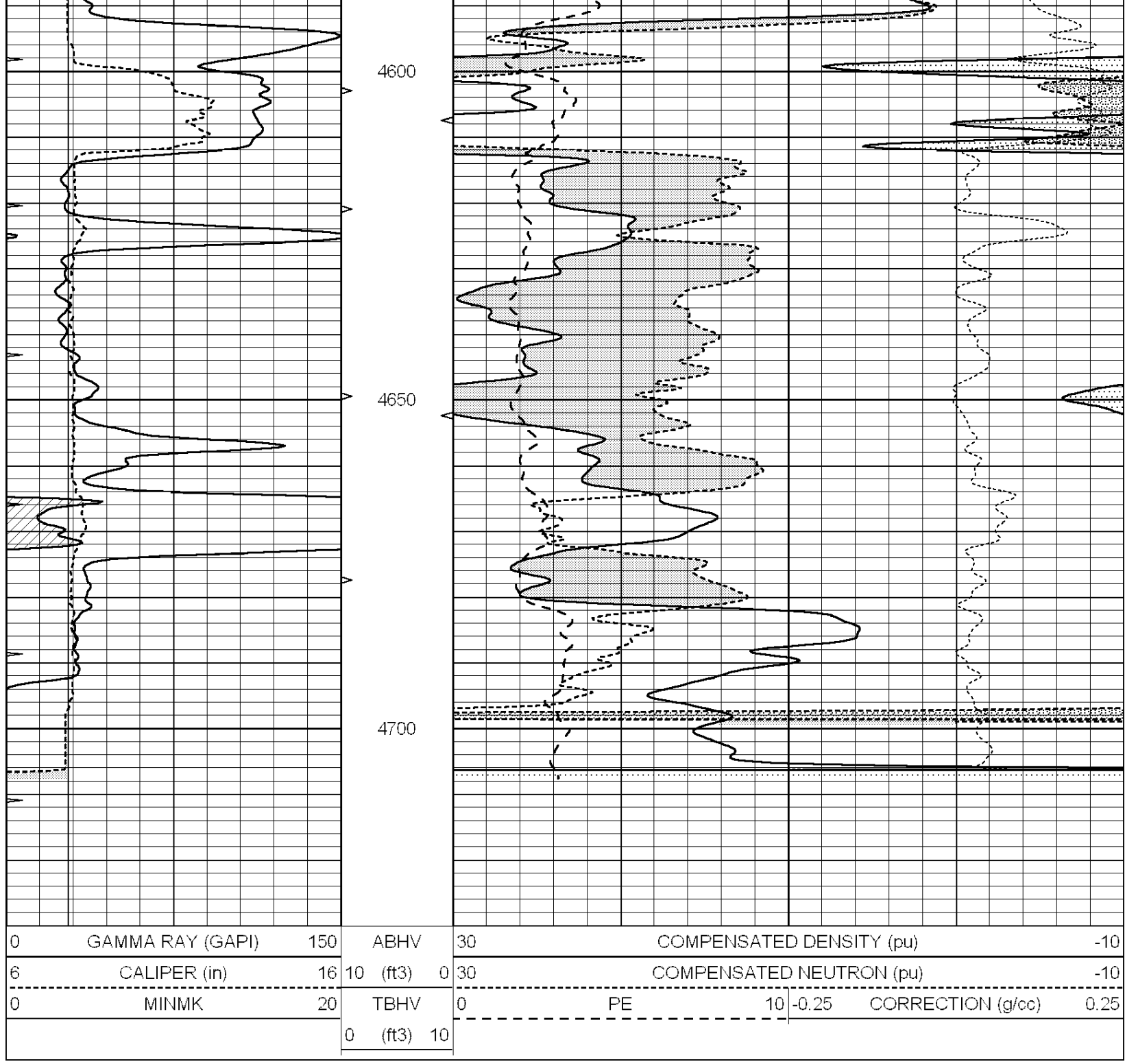
SUPERIOR
Hays,
Kansas

REPEAT SECTION

Database File: 006951pe.db
 Dataset Pathname: pass3.2
 Presentation Format: ldt_neu
 Dataset Creation: Wed Jul 06 05:50:11 2011 by Calc Open-Cased 090629
 Charted by: Depth in Feet scaled 1:240

0	GAMMA RAY (GAPI)	150	ABHV	30	COMPENSATED DENSITY (pu)		-10
6	CALIPER (in)	16	10 (ft3)	0 30	COMPENSATED NEUTRON (pu)		-10
0	MINMK	20	TBHV	0	PE	10	-0.25 CORRECTION (g/cc) 0.25
			0 (ft3)	10			





Calibration Report

Database File: 006951pe.db
 Dataset Pathname: pass5.3.1
 Dataset Creation: Wed Jul 06 08:38:32 2011

Dual Induction Calibration Report

Serial-Model: DIL5-GEAR
 Performed: Sun Jul 03 01:35:22 2011

Loop:	Readings			References			Results	
	Air	Loop	V	Air	Loop	mmho/m	m	b
Deep	0.004	0.654	V	0.000	400.000	mmho/m	520.000	-16.000
Medium	-0.005	0.737	V	0.000	462.500	mmho/m	560.000	-12.000

Internal:	Zero	Cal		Zero	Cal		m	b
Deep	0.006	0.655	V	0.000	400.000	mmho/m	615.668	-3.483
Medium	0.010	0.747	V	0.000	462.500	mmho/m	627.607	-6.064

Litho Density Calibration Report
 Serial: 001 Model: PRB
 Performed Tue Jul 03 11:37:32 2007

Litho Density Calibration						
	Background	Magnesium	Aluminum	Sandstone		
Window 1	2170.6	9915.1	3855.3	11241.6		cps
Window 2	2029.2	8716.5	3483.5	9750.8		cps
Window 3	1665.0	4929.7	2356.8	5332.0		cps
Window 4	493.3	492.1	490.0	486.8		cps
Long Space	0.0	6687.3	1454.3	7721.6		cps
Short Space	1.9	2149.3	1403.9	2354.5		cps
Rho		1.7100	2.5900	1.3800		g/cc
Pe			2.5700	1.5500		
Rib Angle	: 44.4	Rib Slope	: 0.979	Density/Spine Ratio		: 0.556
Spine Angle	: 74.4	Spine Slope	: 3.583	Spine Intercept		: -18.7

Caliper		
	Readings	Reference
Low Ref	3.5	8.4
High Ref	5.4	14.0
	Gain: 2.9	Offset: -1.9

Compensated Neutron Calibration Report

Serial Number: NUE_2I
 Tool Model: G

CALIBRATION						
Detector	Readings		Target		Normalization	
Short Space	1.00	cps	1.00	cps	1.0000	
Long Space	1.00	cps	1.00	cps	1.0000	

Gamma Ray Calibration Report

Serial Number: GR1
 Tool Model: OPEN
 Performed: Sat Nov 05 02:41:33 2005

Calibrator Value: 1.0 GAPI

Background Reading: 0.0 cps
 Calibrator Reading: 1.0 cps

Sensitivity: 0.3200 GAPI/cps