



**SUPERIOR**  
Hays,  
Kansas

**SONIC**  
LOG

Company WHITE EXPLORATION, INC.  
Well RJD UNIT #1  
Field  
County HODGEMAN State KANSAS

Company WHITE EXPLORATION, INC.  
Well RJD UNIT #1  
Field  
County HODGEMAN  
State KANSAS

Location: API #: 05-083-21713-00  
200' FNL & 1970' FWL  
N/2 - N/2 - NE - NW  
SEC 1 TWP 23S RGE 24W  
Permanent Datum GROUND LEVEL Elevation 2325  
Log Measured From KELLY BUSHING 5' A.G.L.  
Drilling Measured From KELLY BUSHING  
Other Services  
CDL/CNL/PE  
DIL/MEL  
Elevation  
K.B. 2330  
D.F. 2328  
G.L. 2325

Date	7-6-11
Run Number	TWMO
Depth Driller	4718
Depth Logger	4721
Bottom Logged Interval	4714
Top Log Interval	250
Casing Driller	261
Casing Logger	259
Bit Size	7.875
Type Fluid in Hole	CHEMICAL MUD
Density / Viscosity	9.7 / 46
pH / Fluid Loss	9.5 / 11.6
Source of Sample	FLOWLINE
Rim @ Meas. Temp	0.70 @ 92F
Rmf @ Meas. Temp	0.53 @ 92F
Rmc @ Meas. Temp	0.84 @ 92F
Source of Rmf / Rmc	MEASURED
Rim @ BHT	0.53 @ 122F
Time Circulation Stopped	2 HOURS
Time Logger on Bottom	
Maximum Recorded Temperature	122F
Equipment Number	860
Location	HAYS, KS.
Recorded By	JEFF GRONEWEG
Witnessed By	LARRY FRIEND

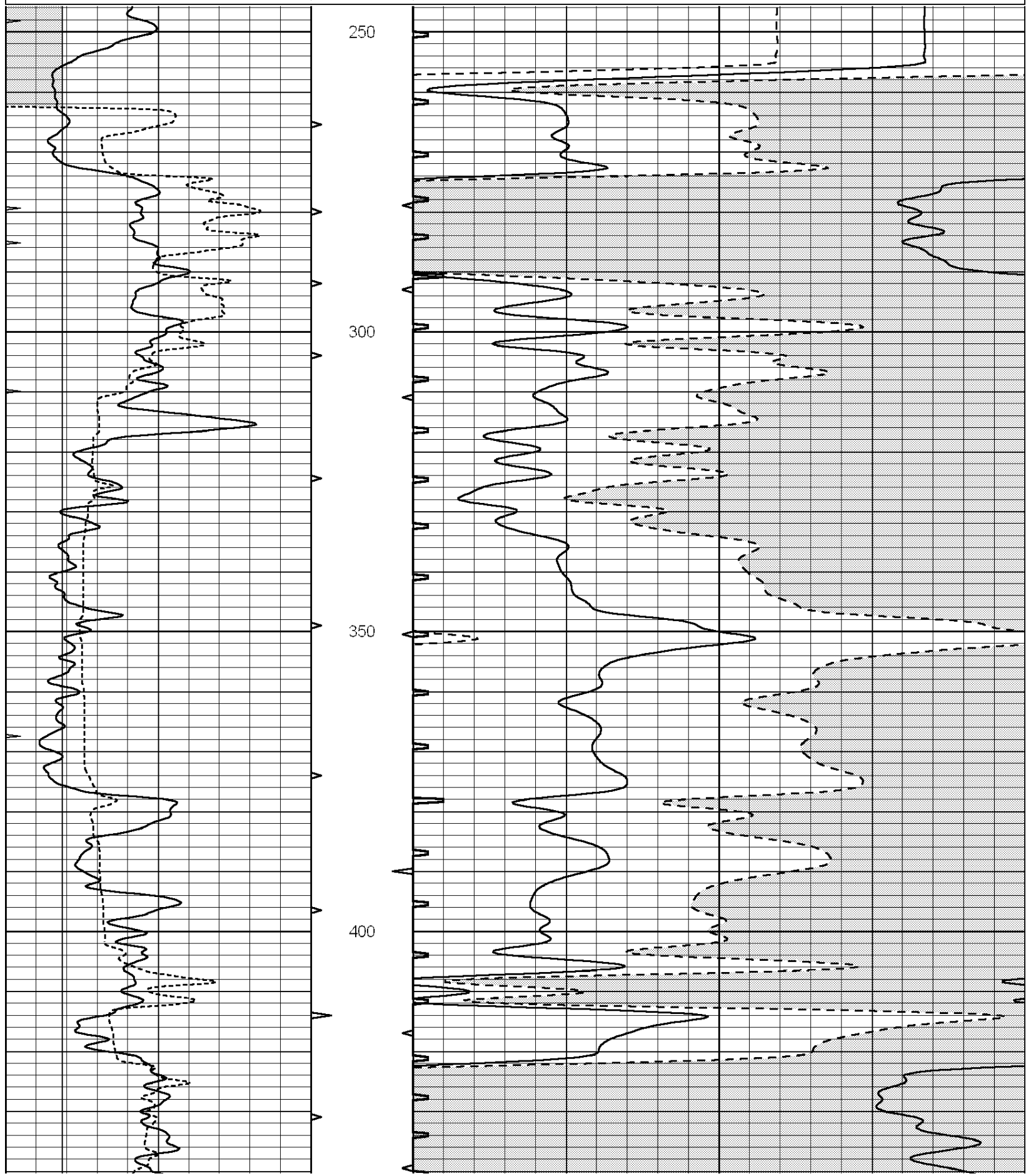
<<< Fold Here >>>

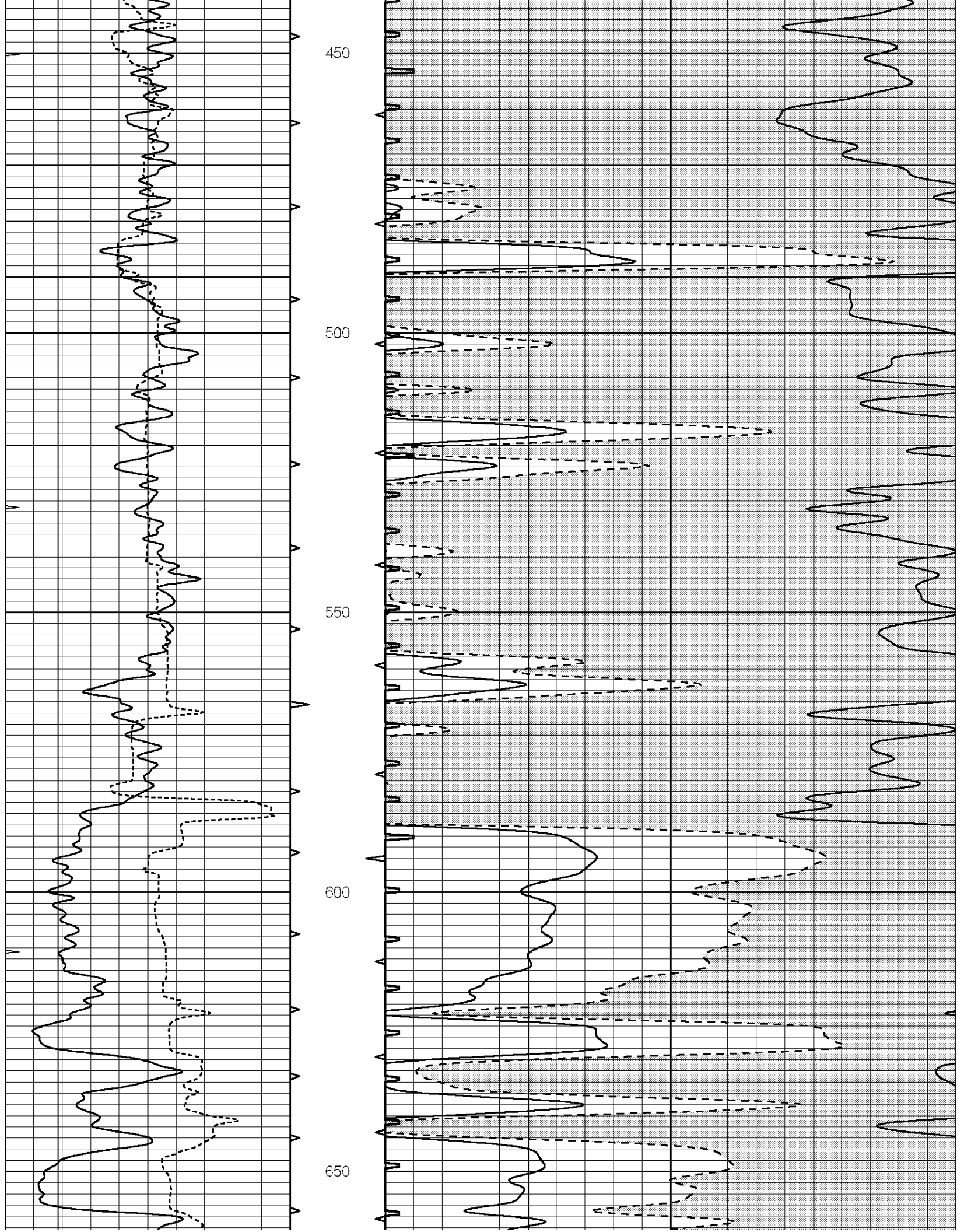
All interpretations are opinions based on inferences from electrical or other measurements and we cannot and do not guarantee the accuracy or correctness of any interpretation, and we shall not, except in the case of gross or willful negligence on our part, be liable or responsible for any loss, costs, damages, or expenses incurred or sustained by anyone resulting from any interpretation made by any of our officers, agents or employees. These interpretations are also subject to our general terms and conditions set out in our current Price Schedule.

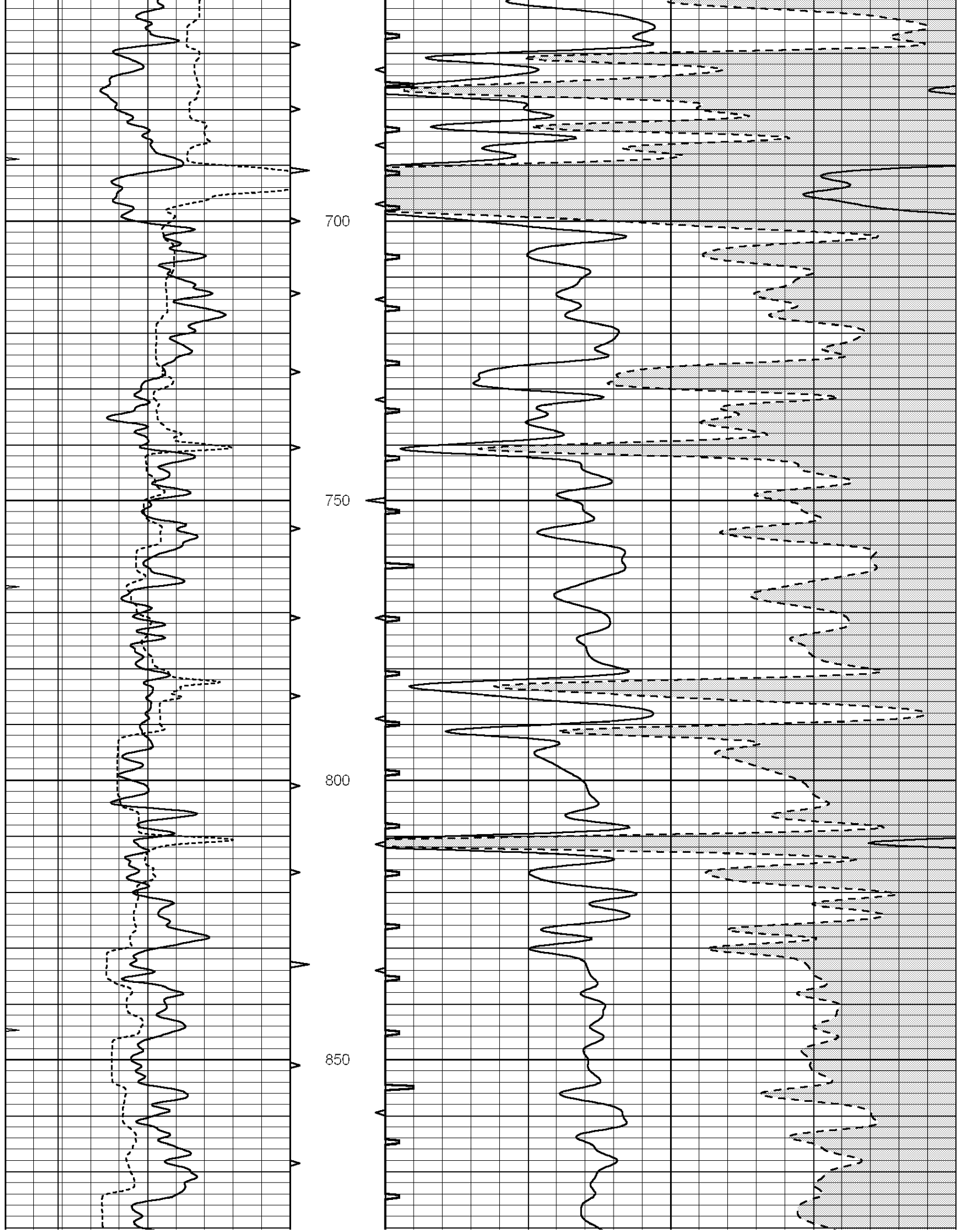
Comments

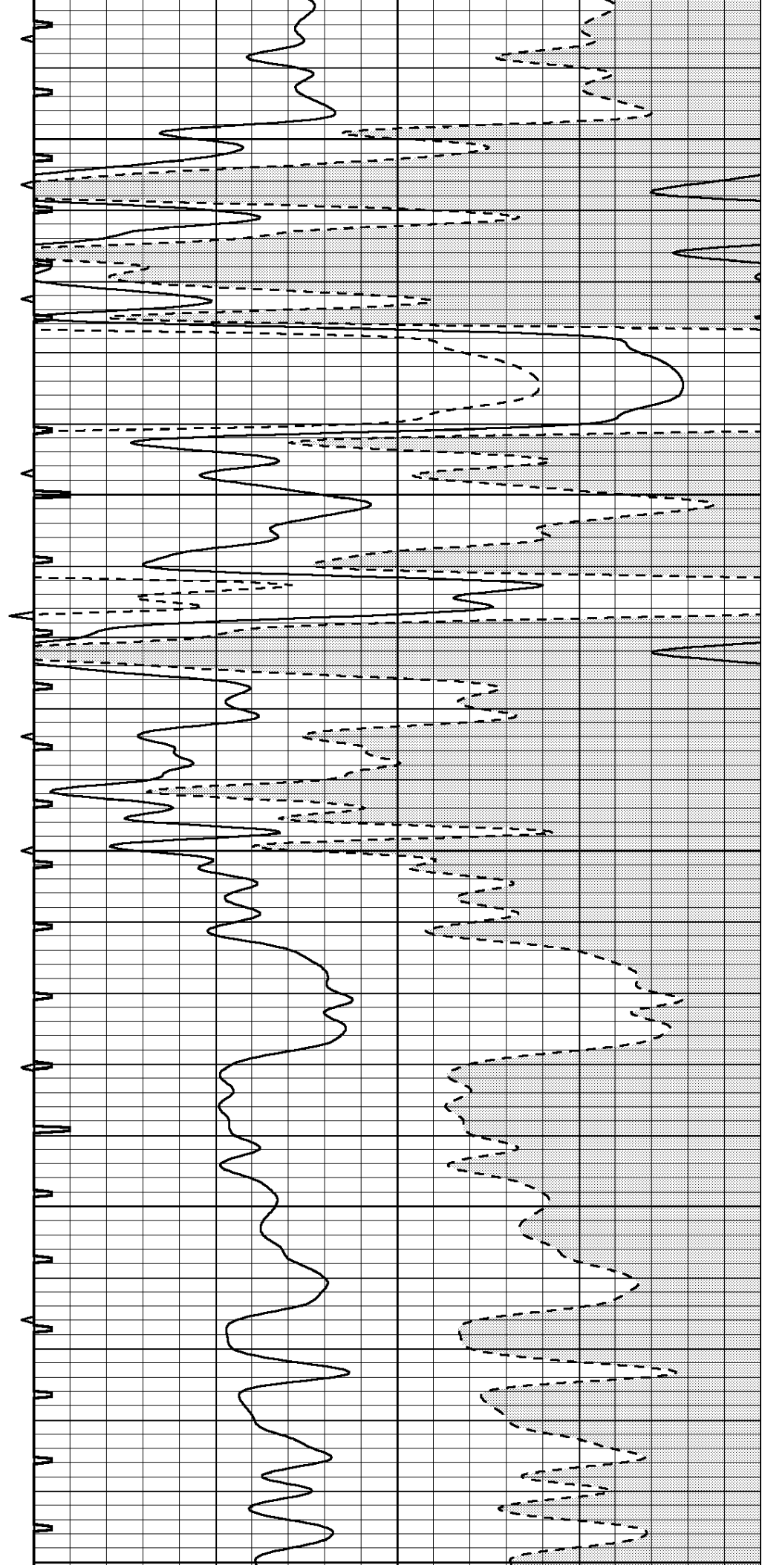
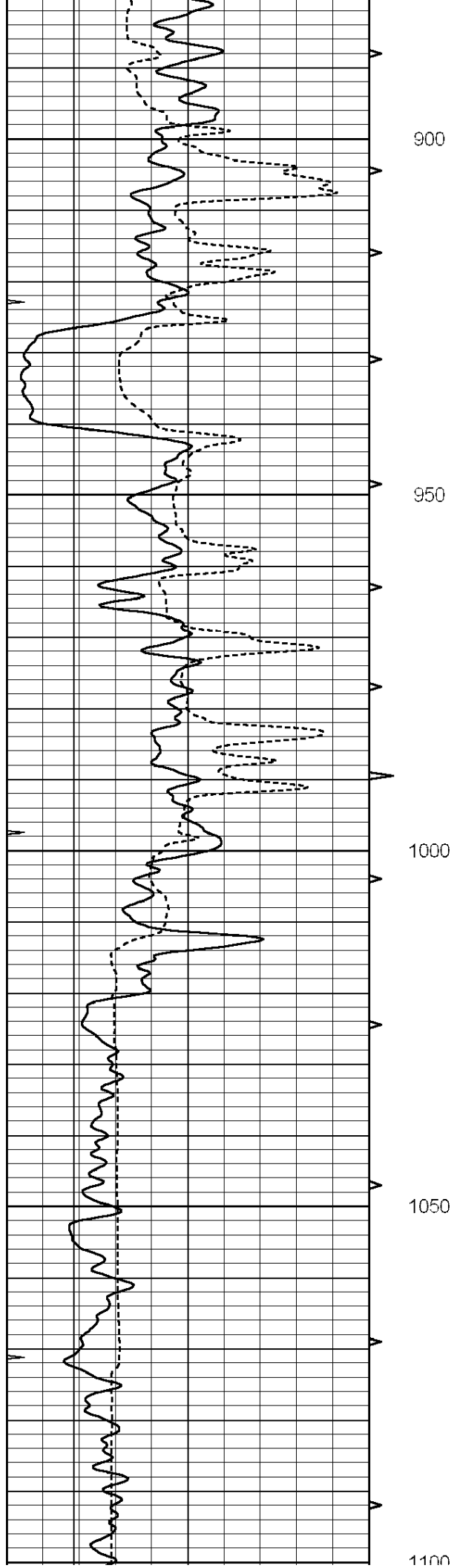
**SUPERIOR WELL SERVICES**  
 785-628-6395  
**THANK YOU FOR YOUR BUSINESS**  
**DIRECTIONS: WEST EDGE OF JETMORE, KS - 1/2 MILE SOUTH TO T IN ROAD - 1/4 MILE WEST NORTH & WEST INTO**

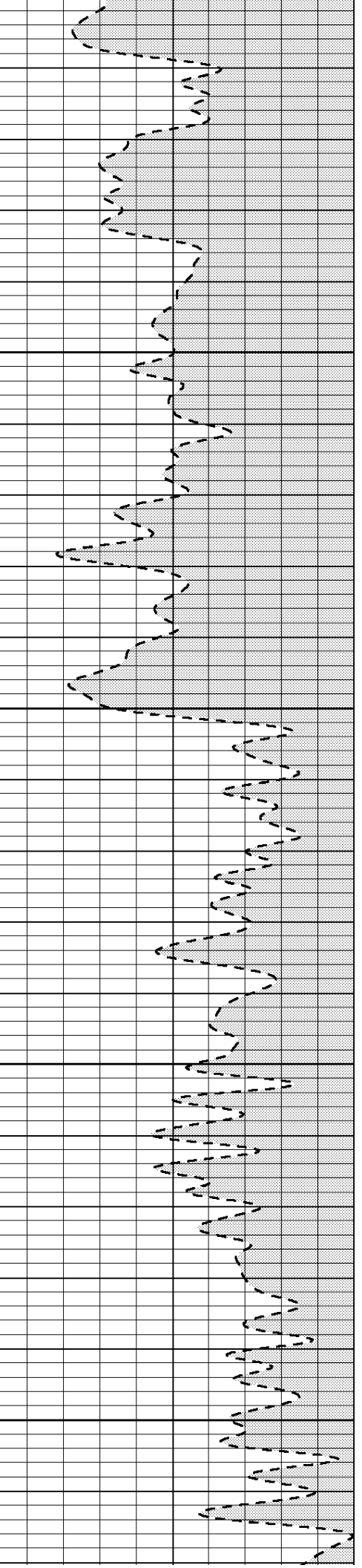
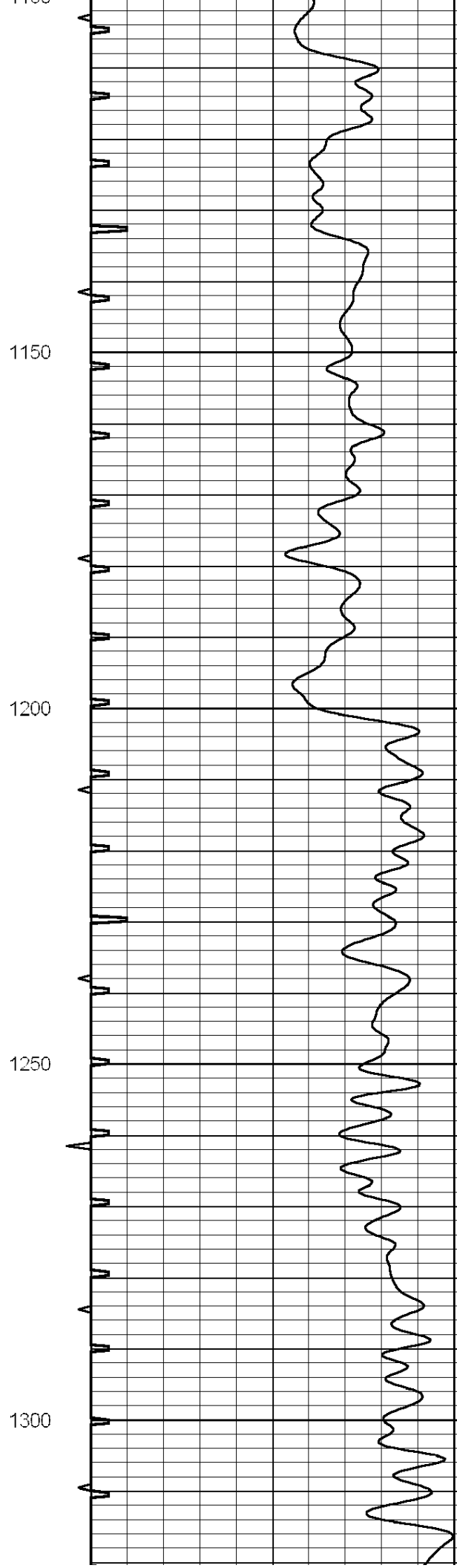
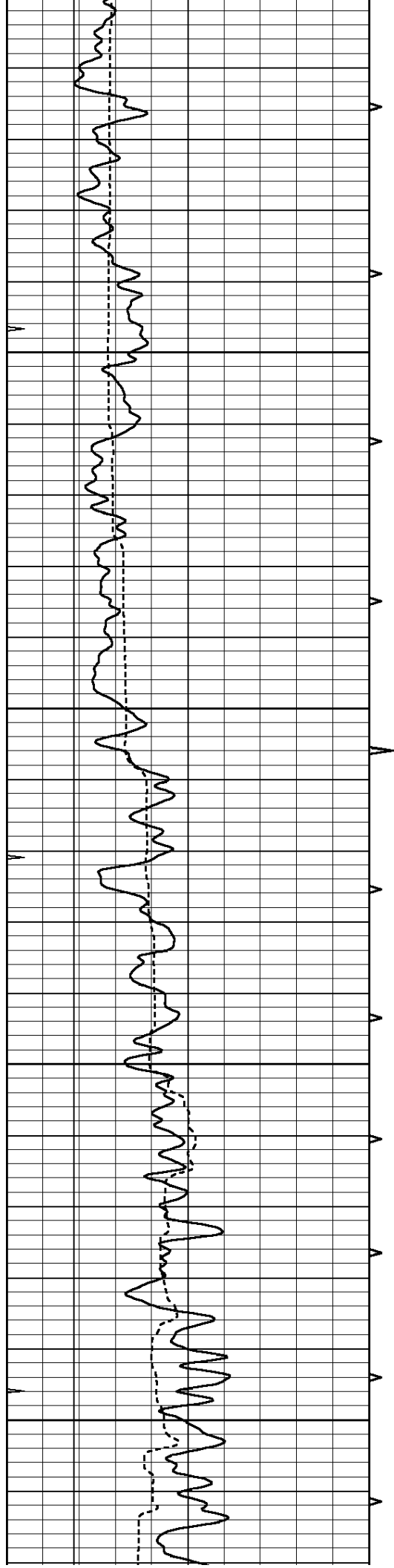
0	GAMMA RAY (GAPI)	150	ABHV	140	DELTA TIME (usec/ft)	40
6	MELCAL (in)	16	10 (ft3)	0 30	SONIC POROSITY (pu)	-10
0	MINMK	20	TBHV	0	ITT (msec)	20
			0 (ft3)	10		

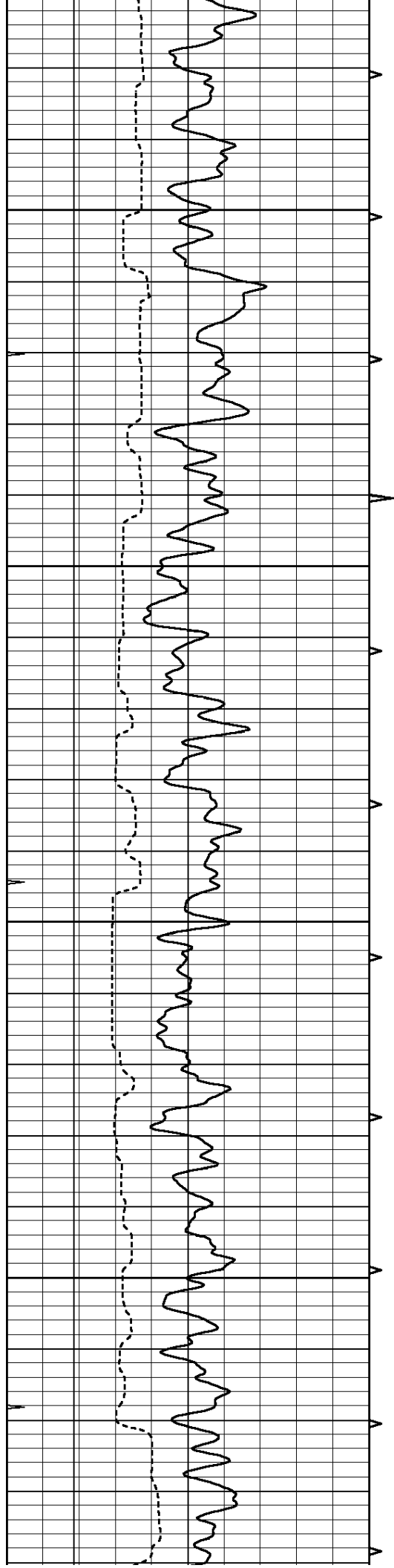










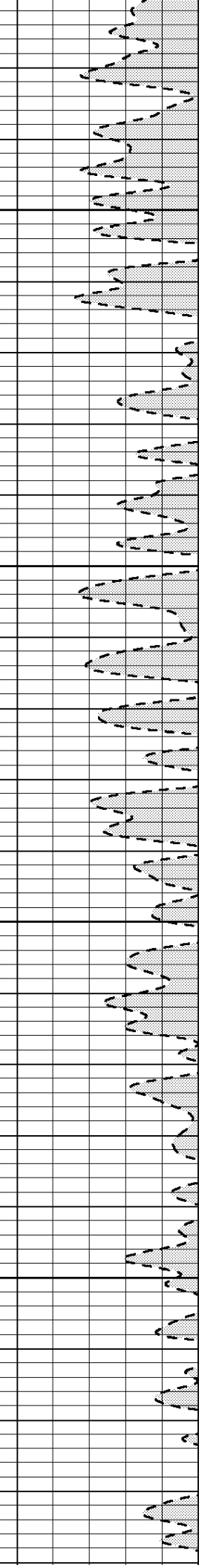
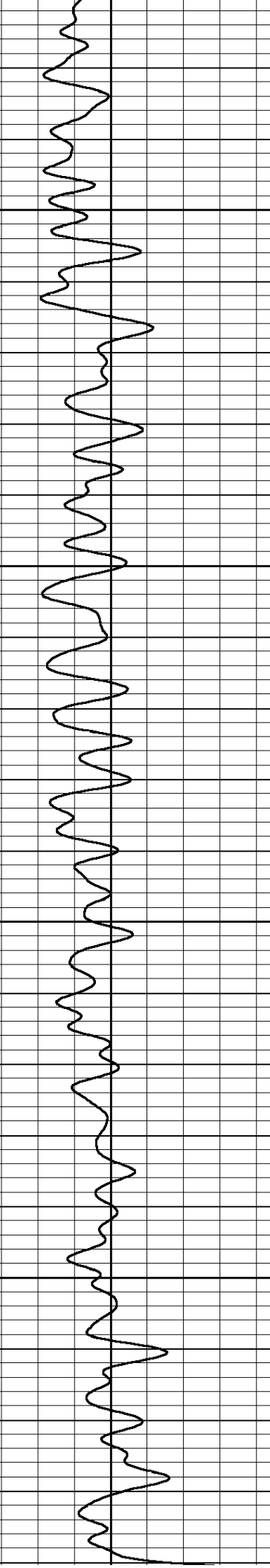
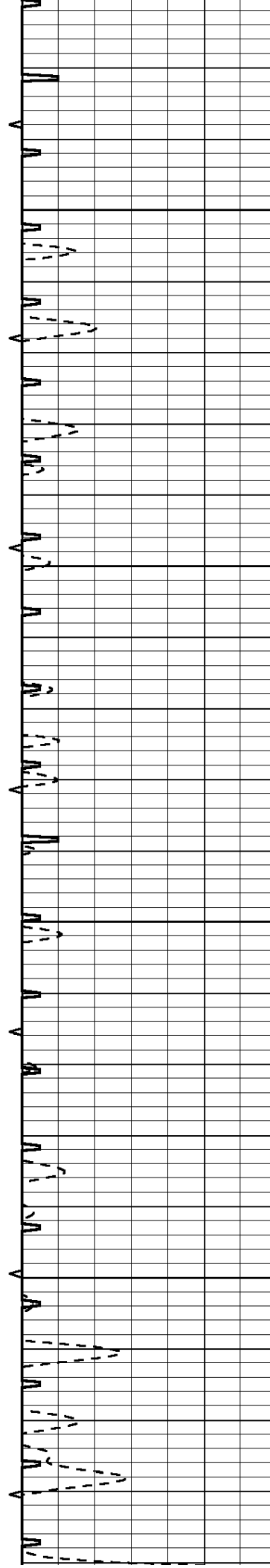


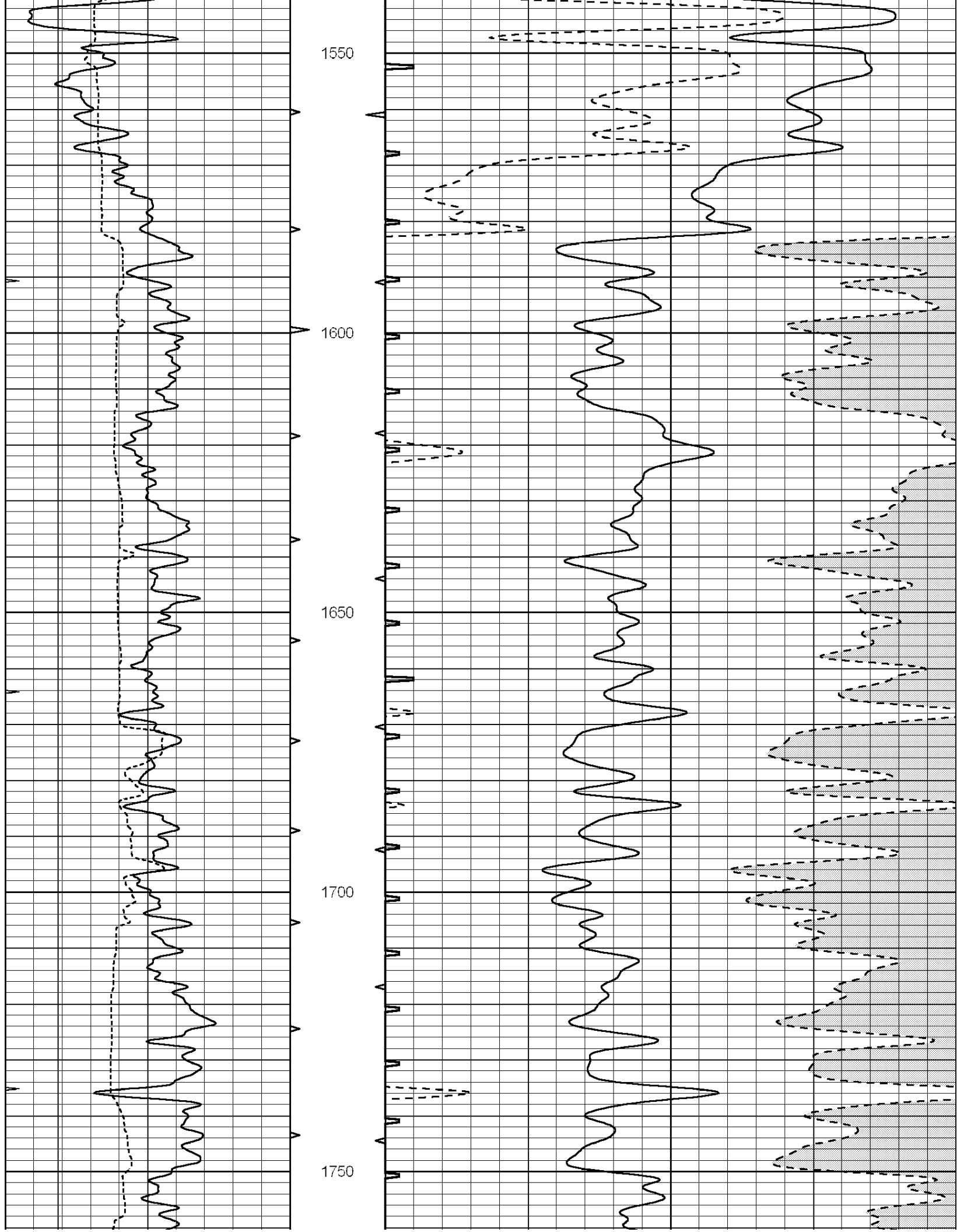
1350

1400

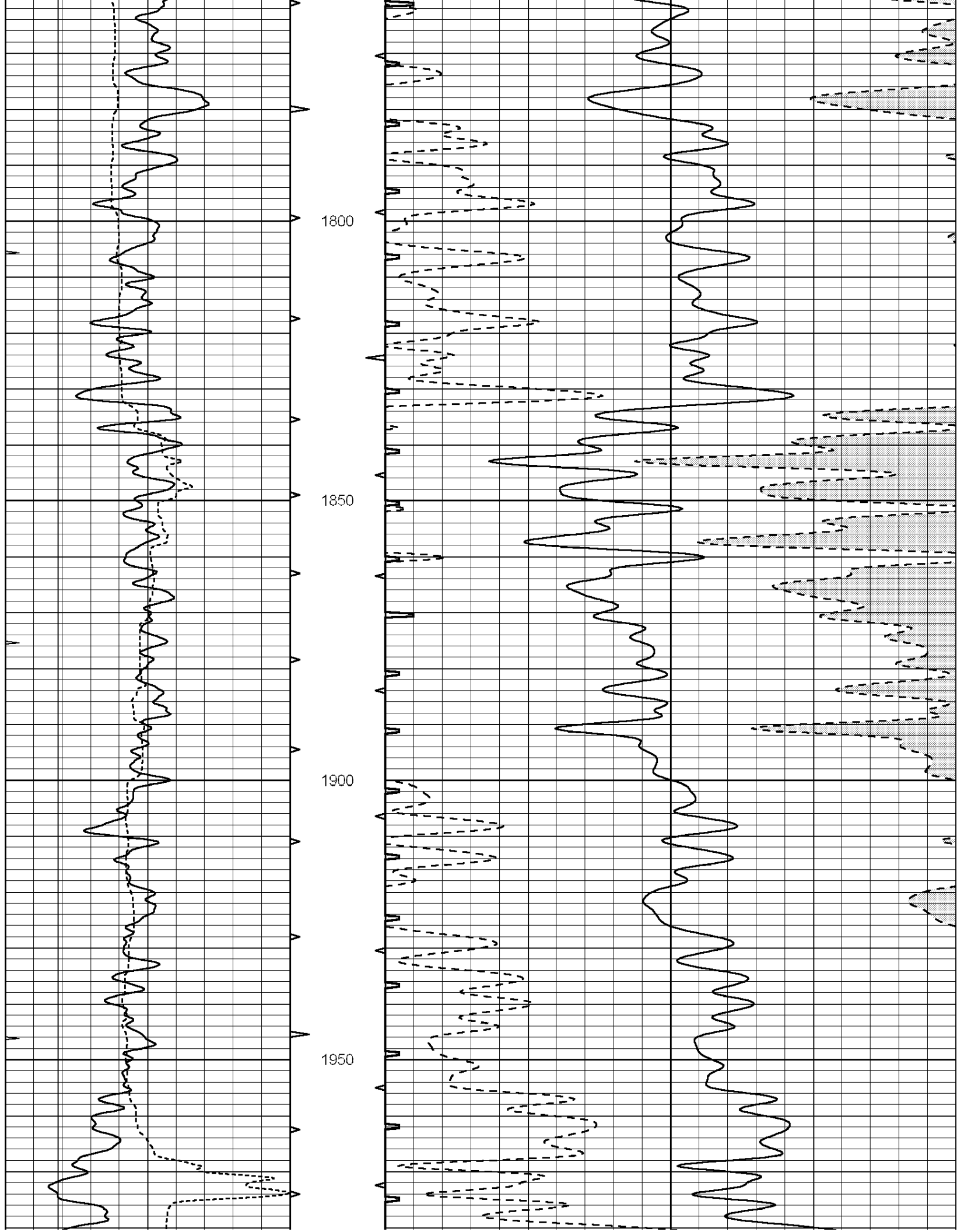
1450

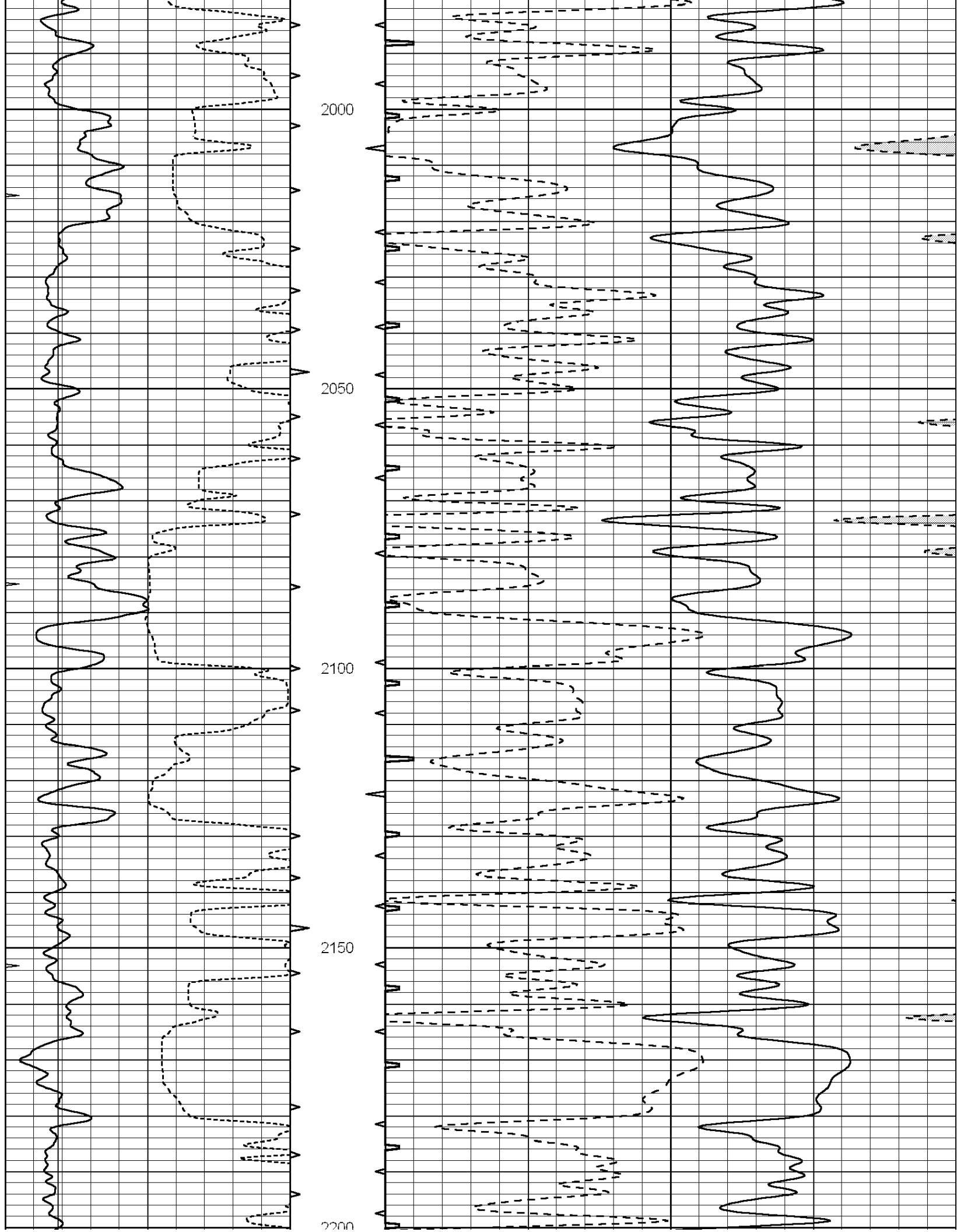
1500

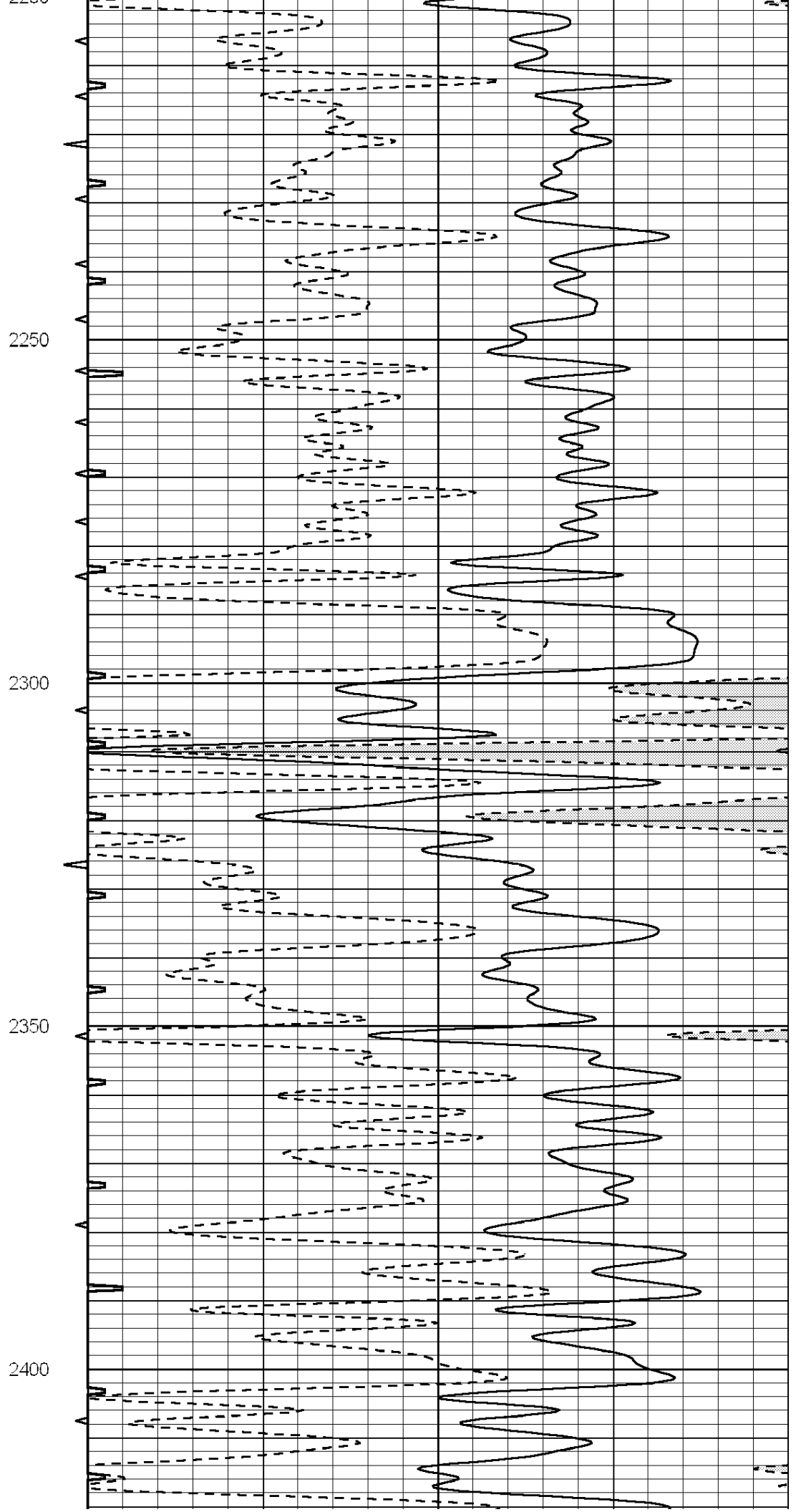
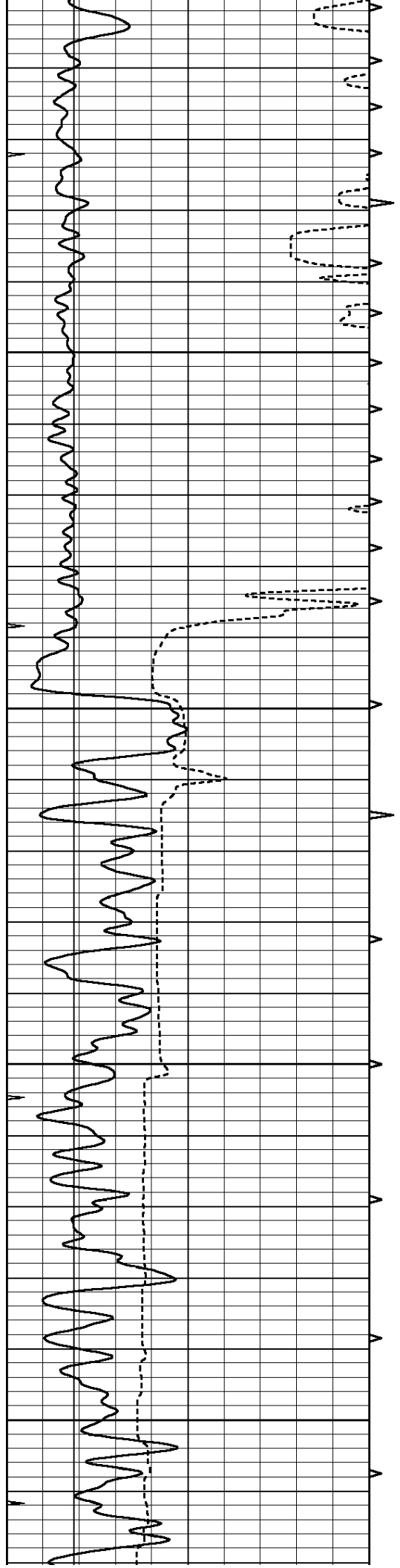


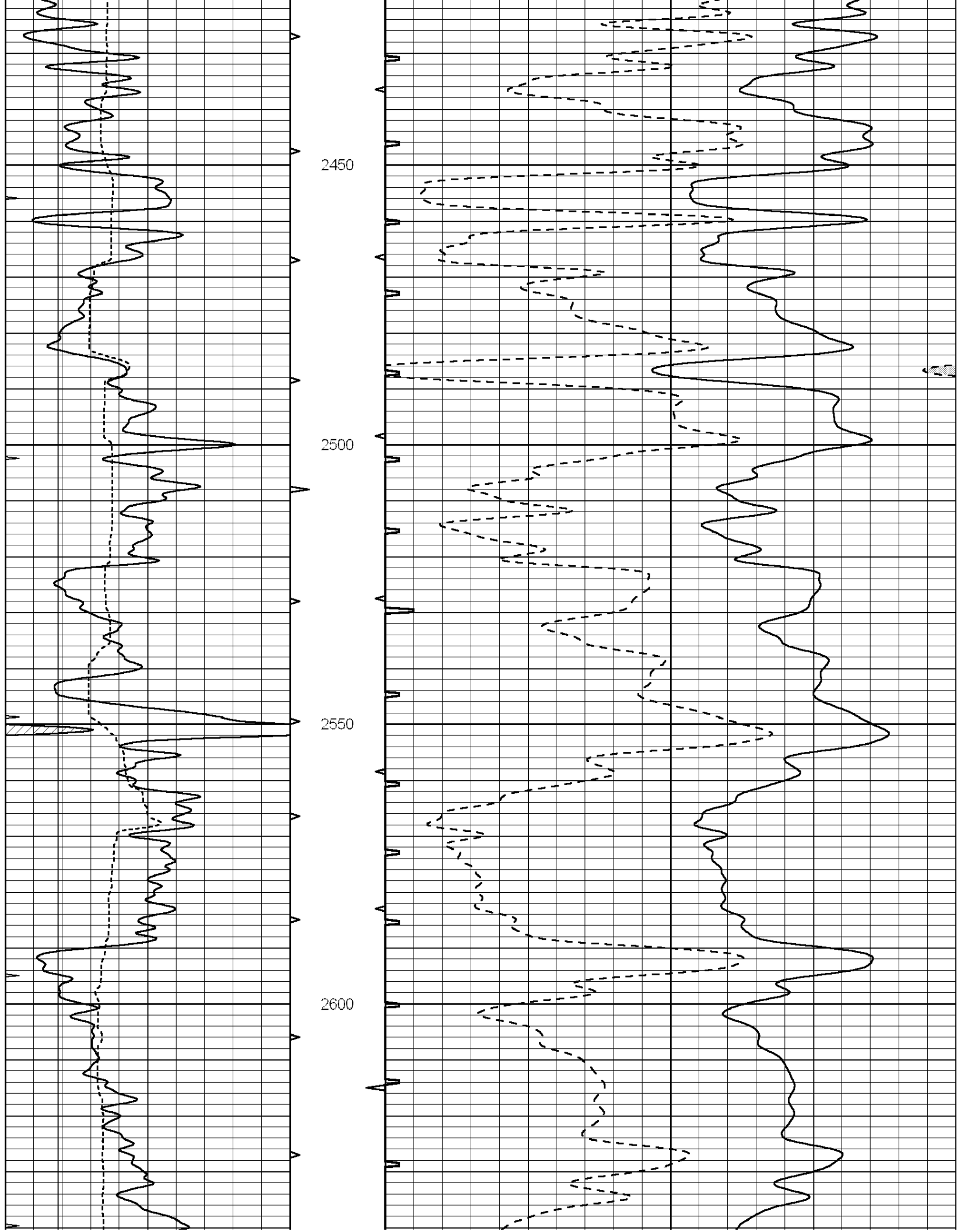


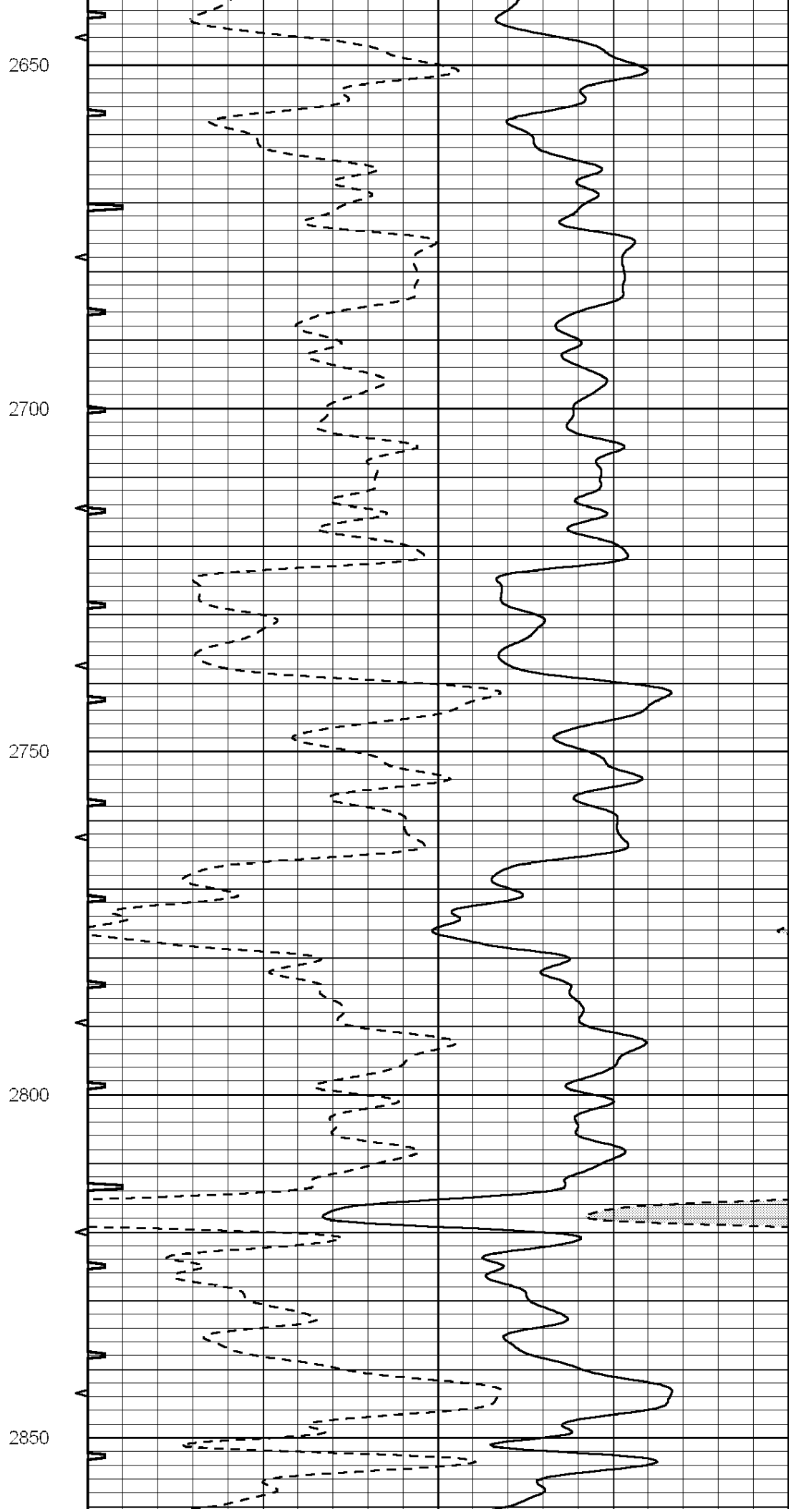
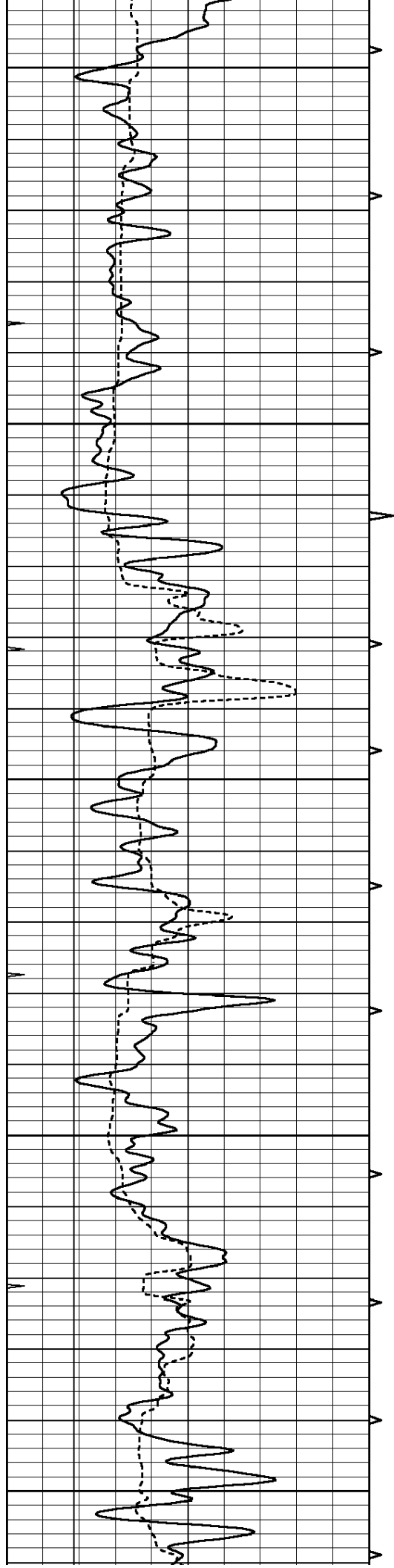


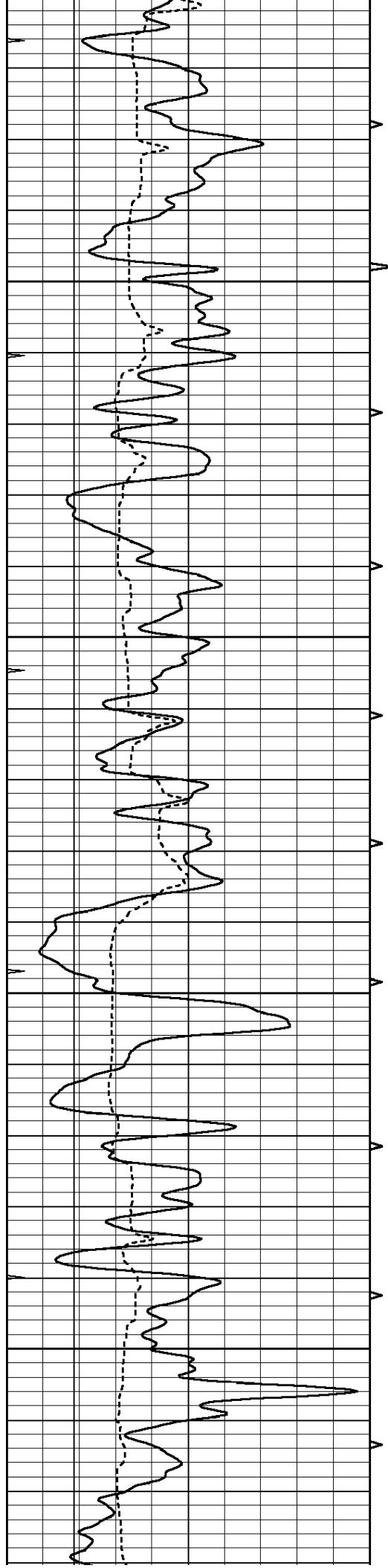










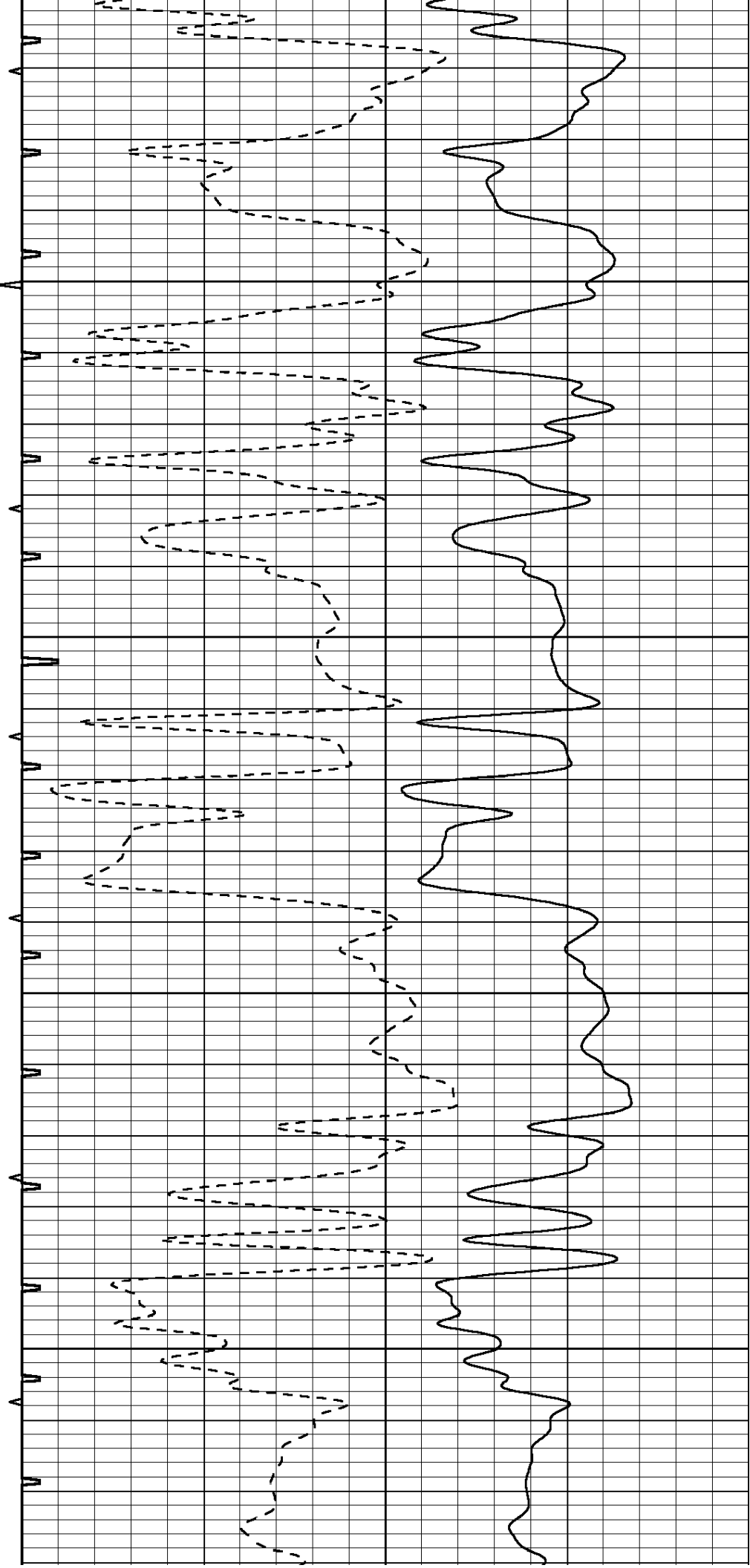


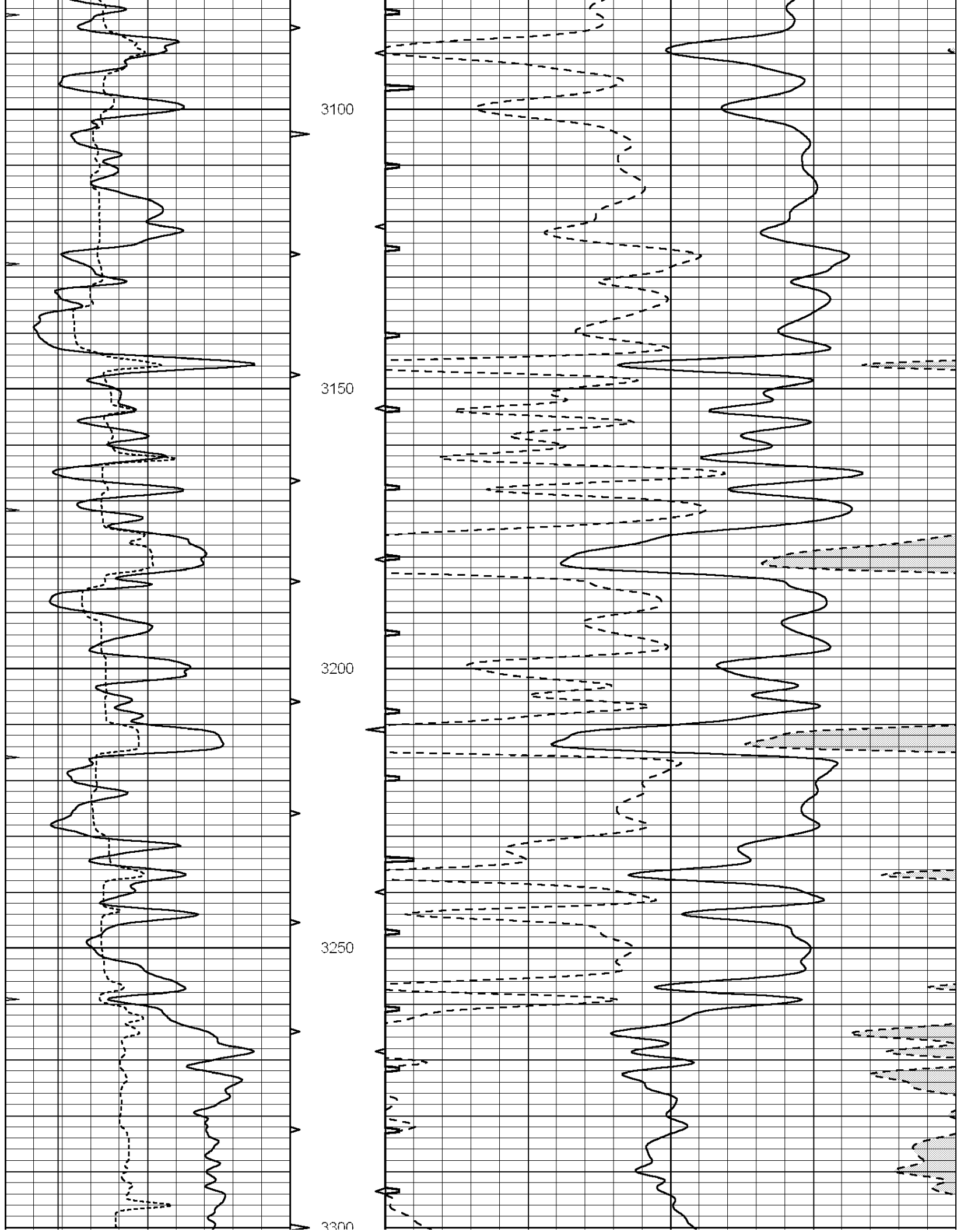
2900

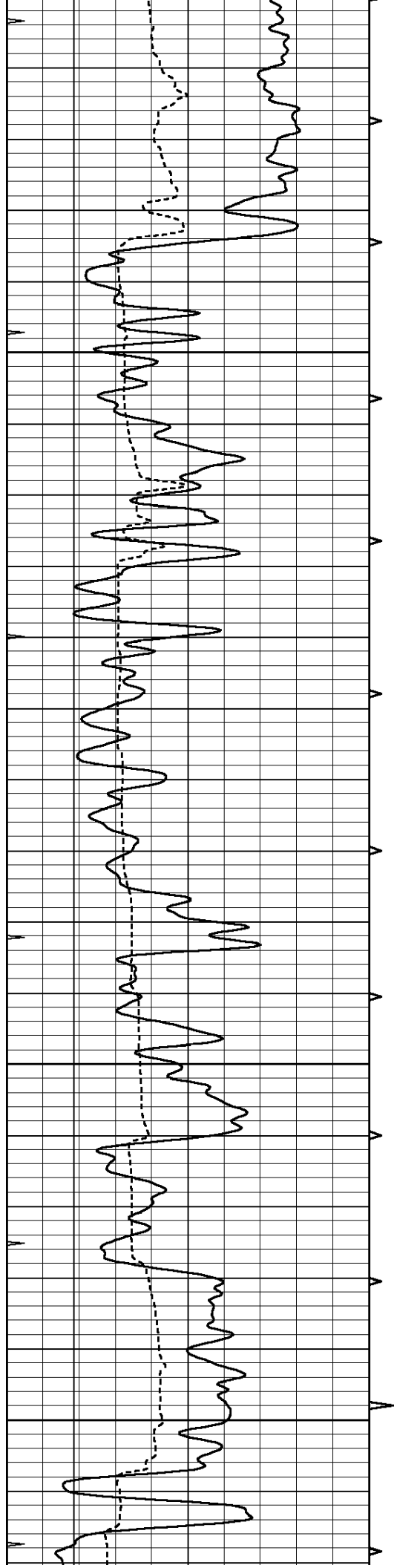
2950

3000

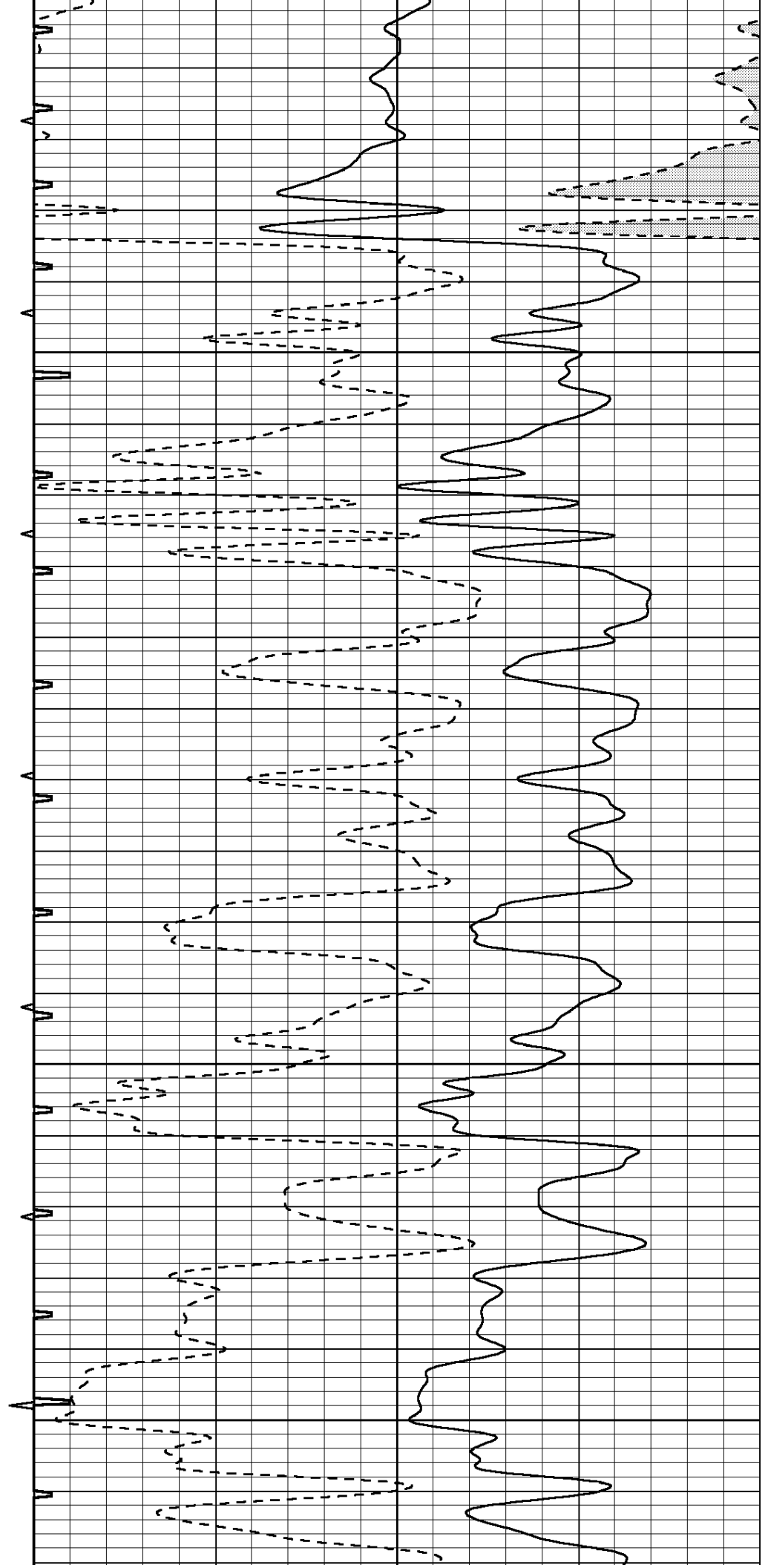
3050



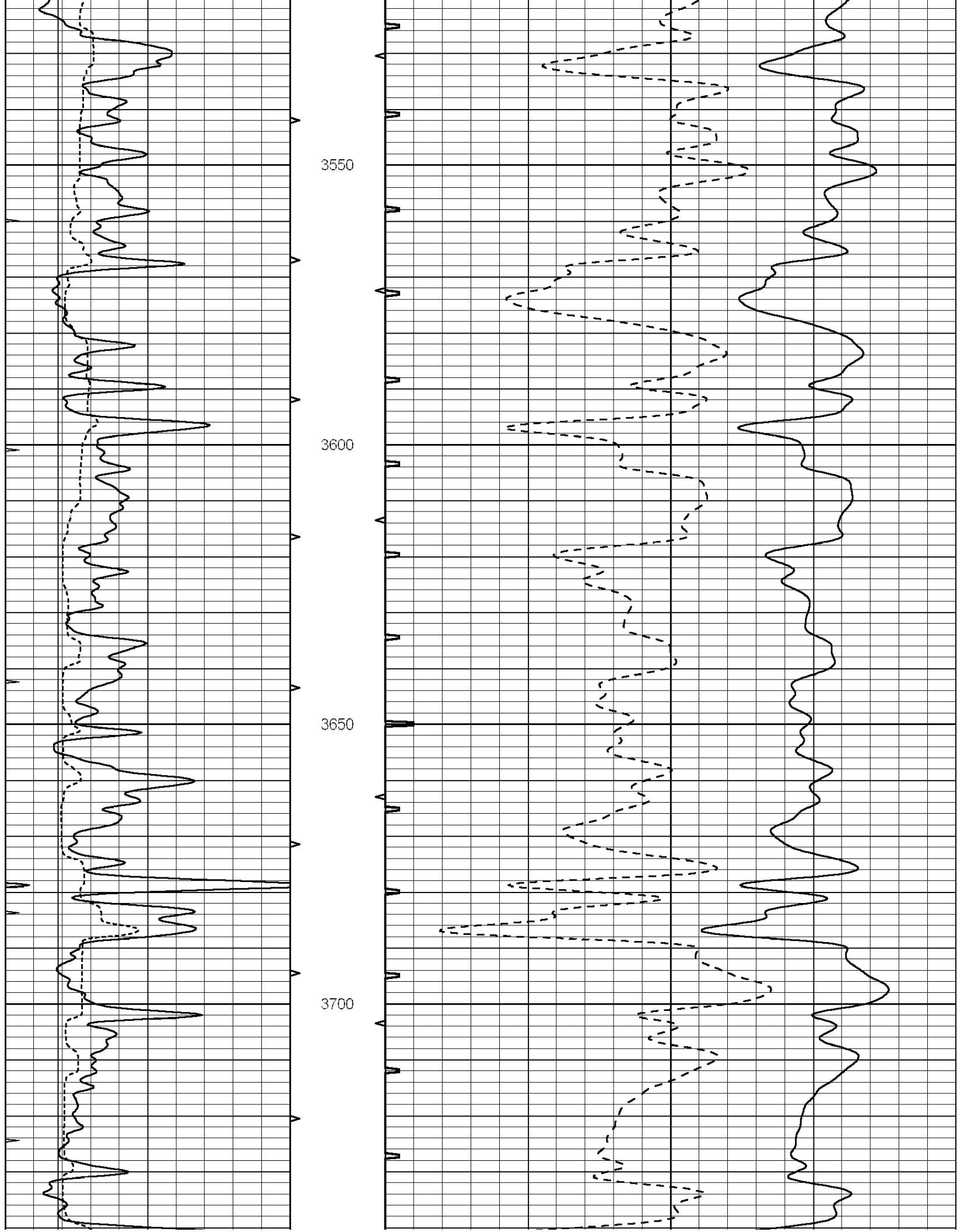


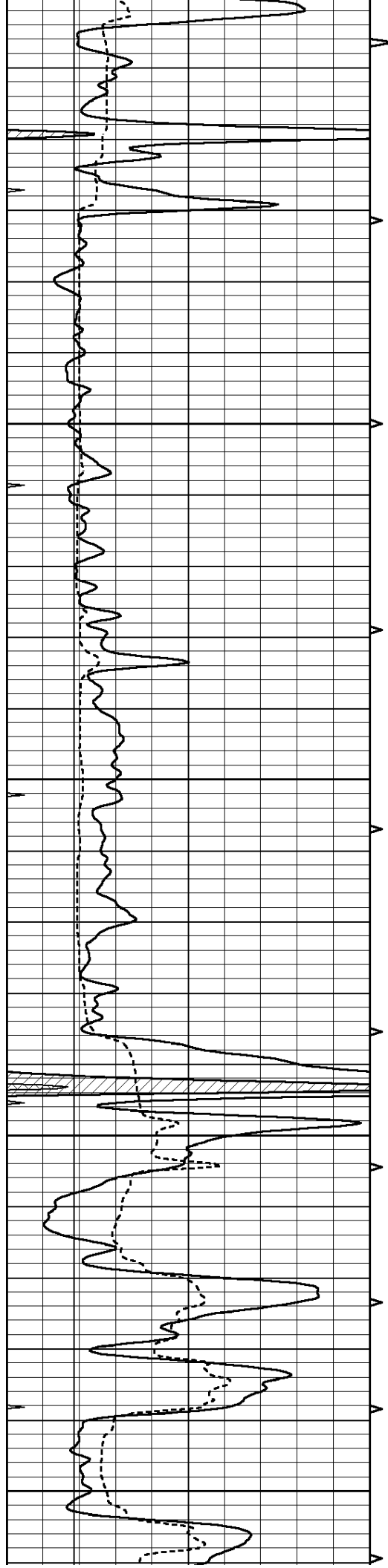


3300  
3350  
3400  
3450  
3500









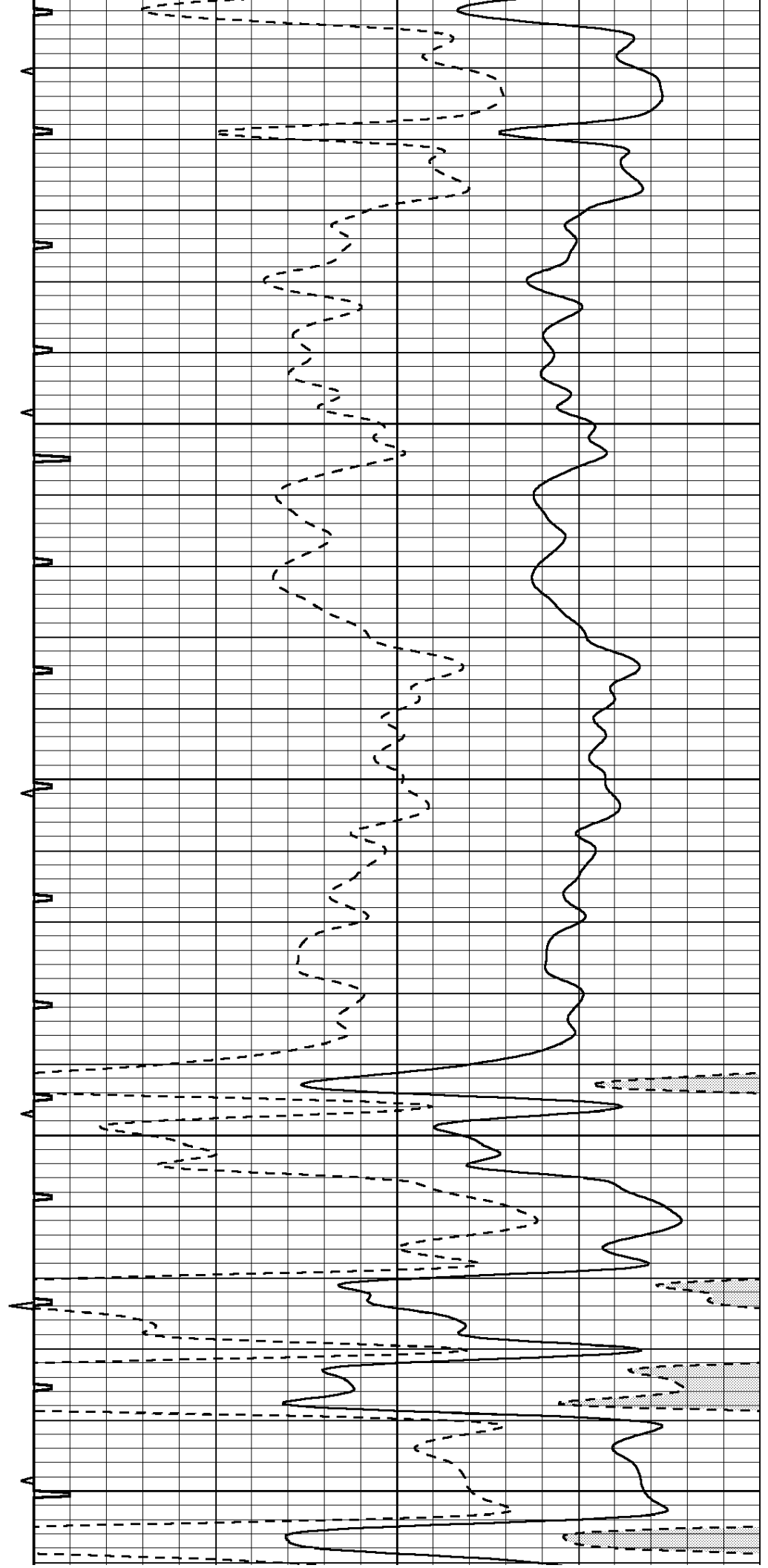
3750

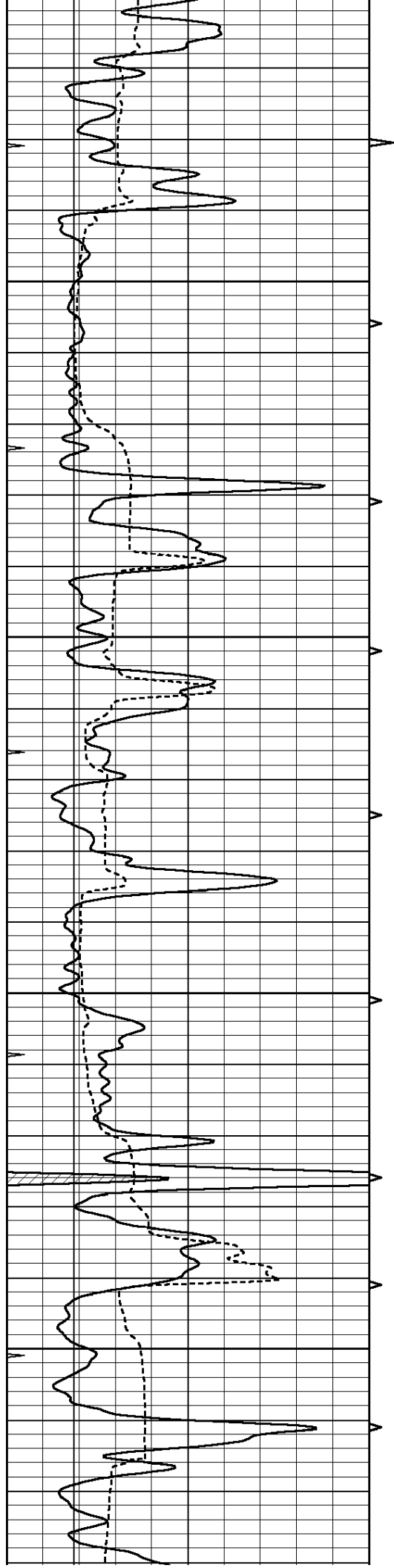
3800

3850

3900

3950



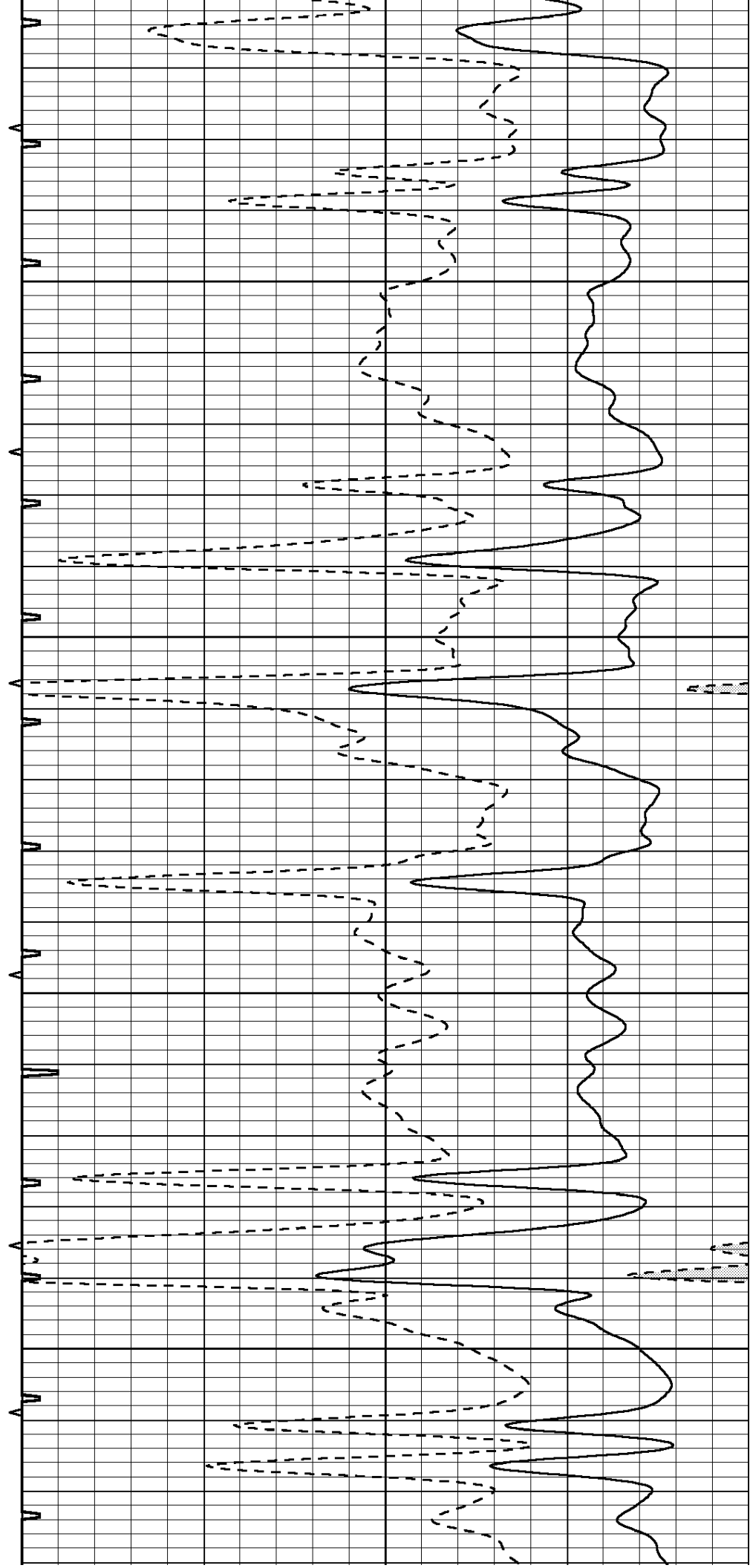


4000

4050

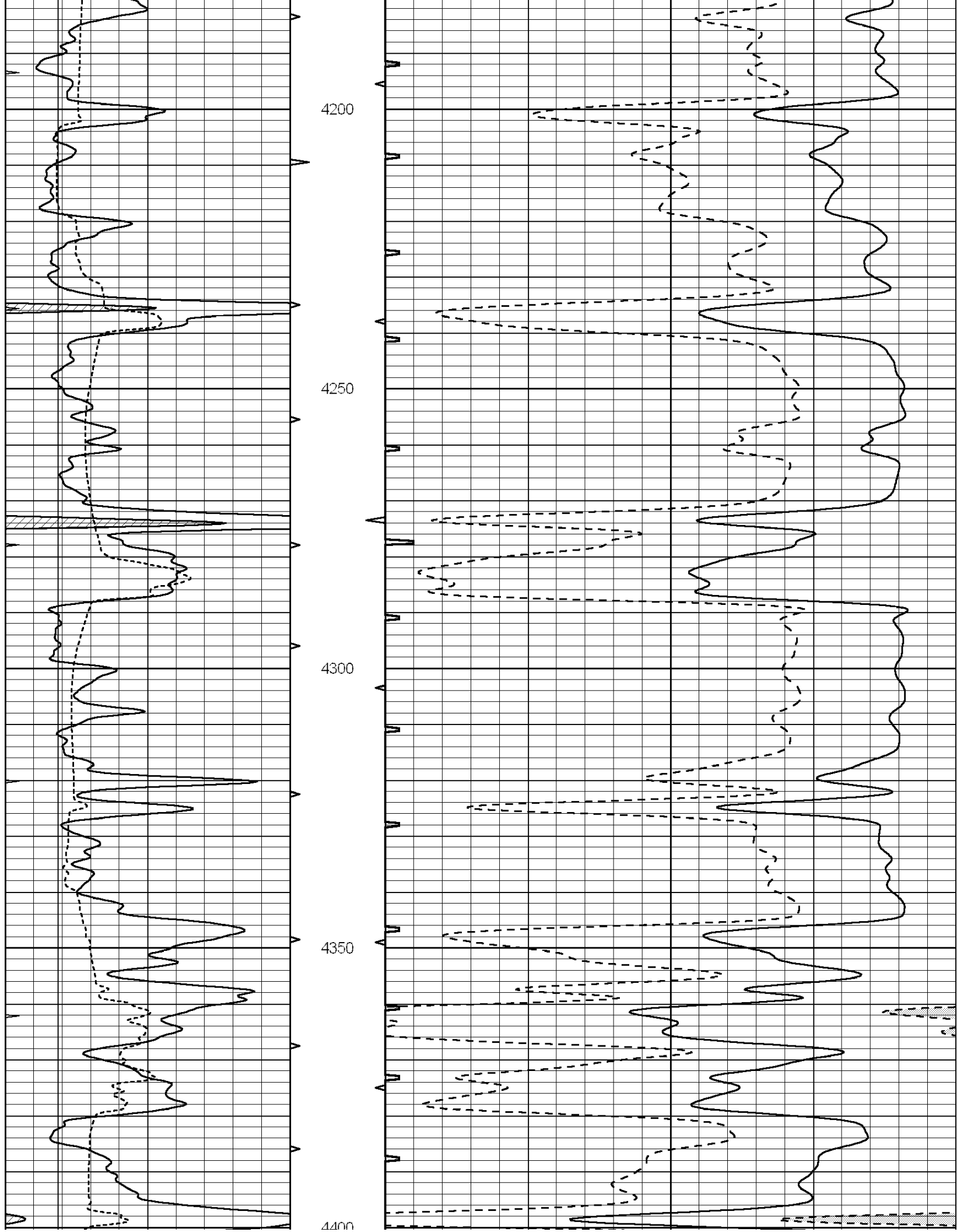
4100

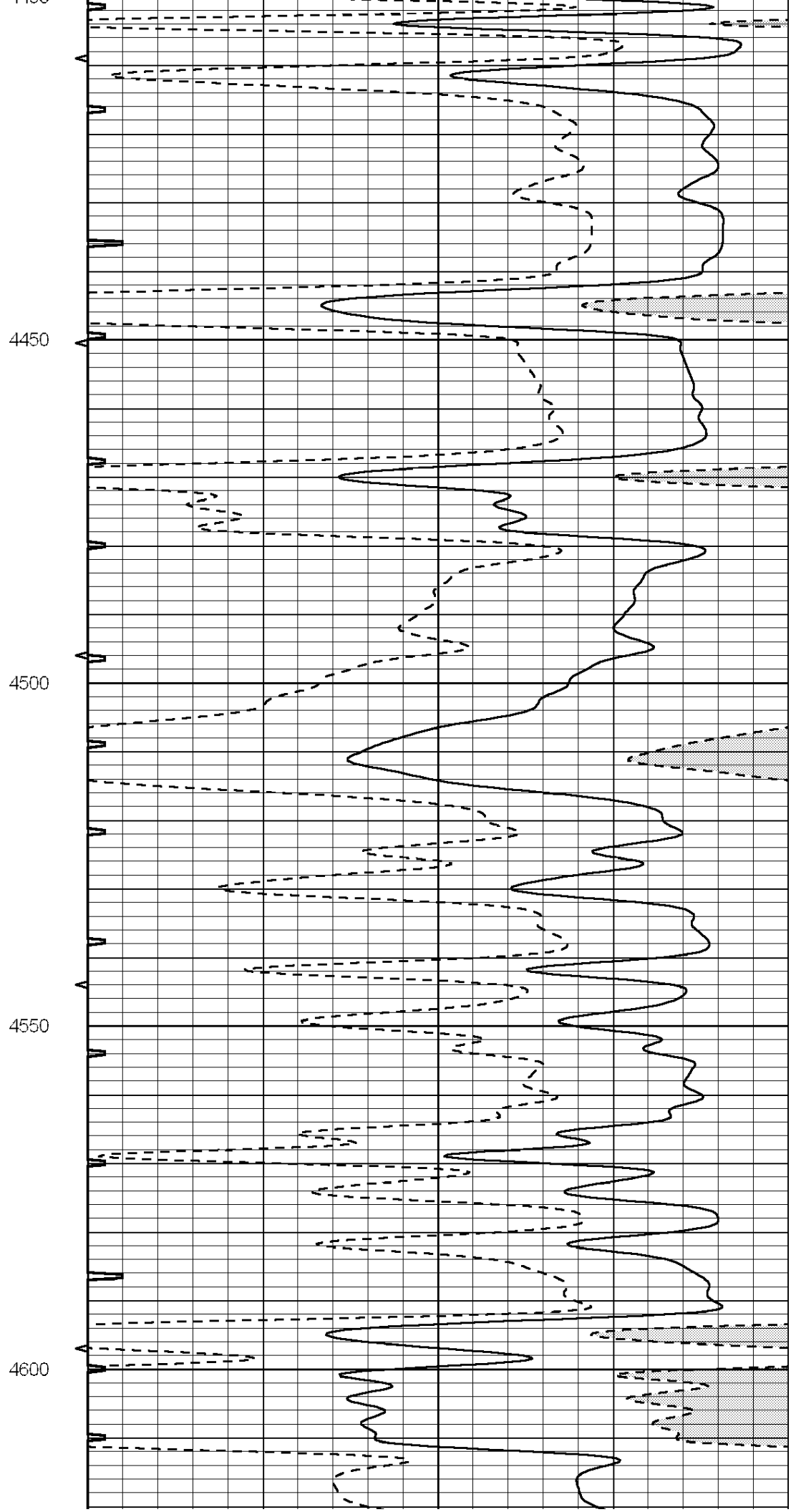
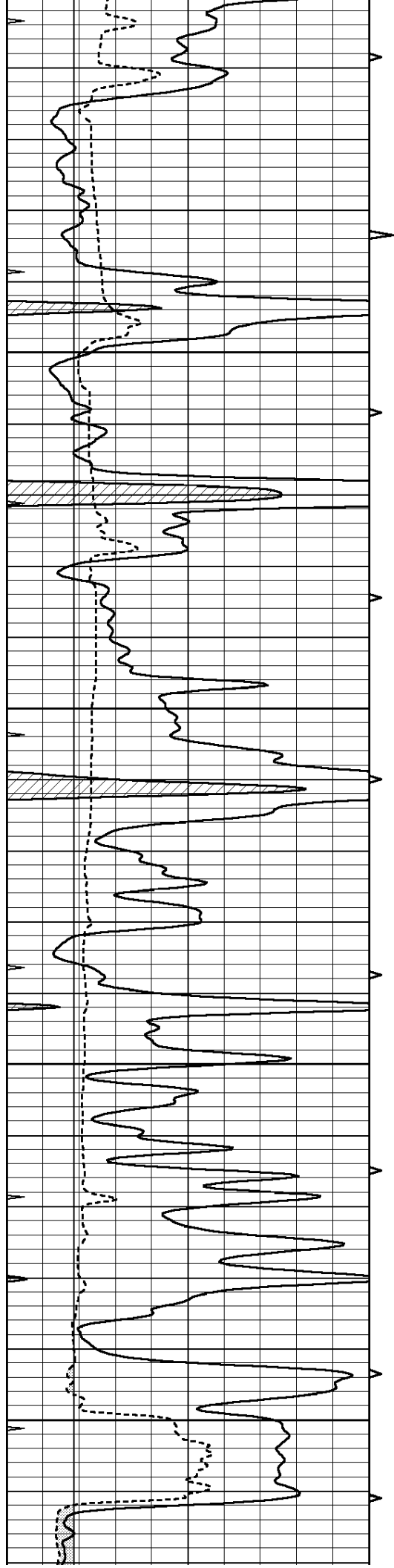
4150

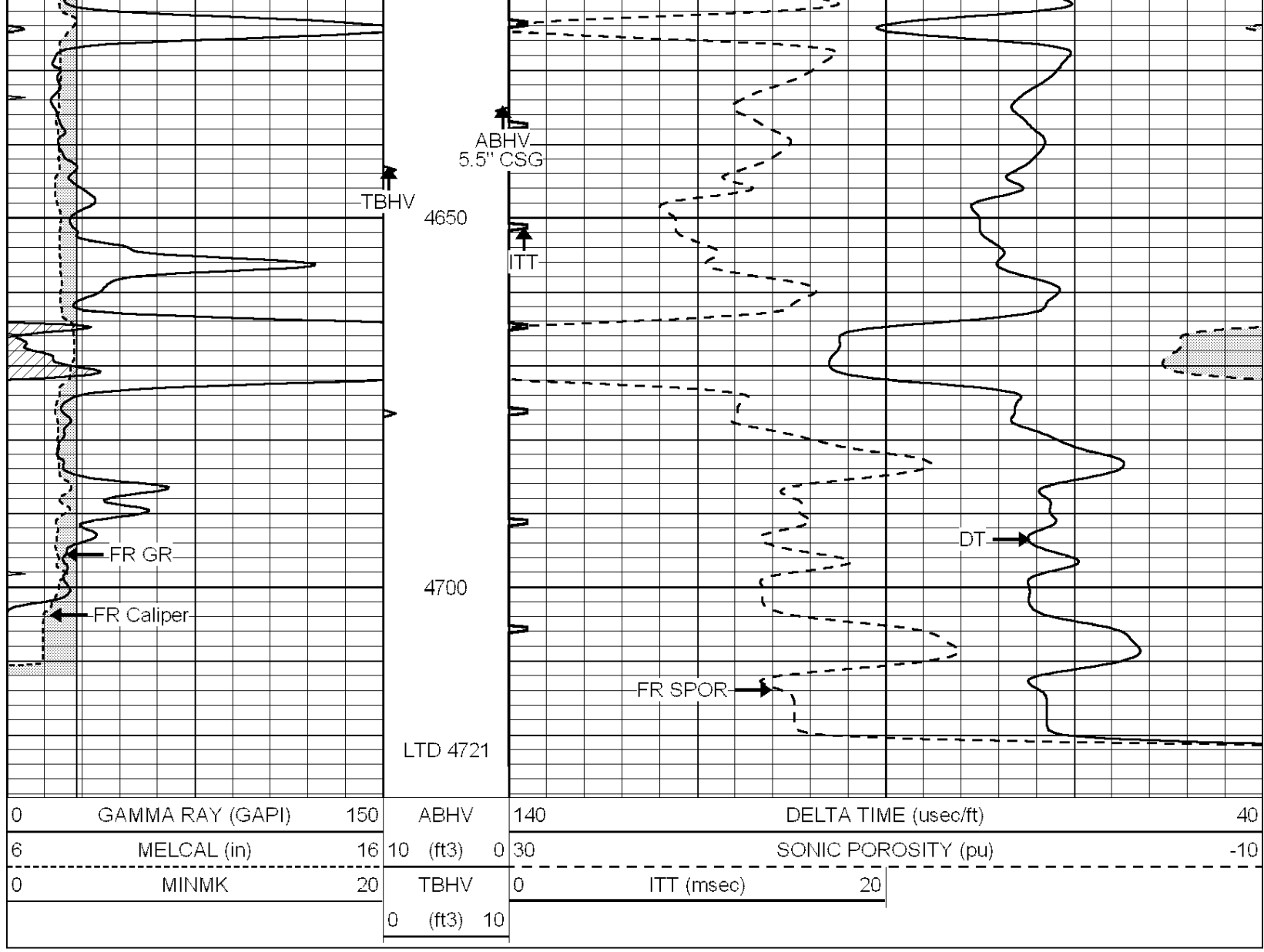


4150

4150







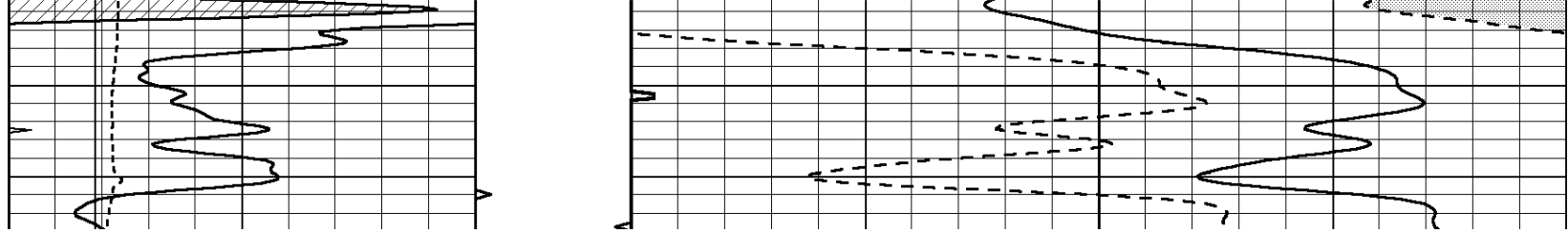


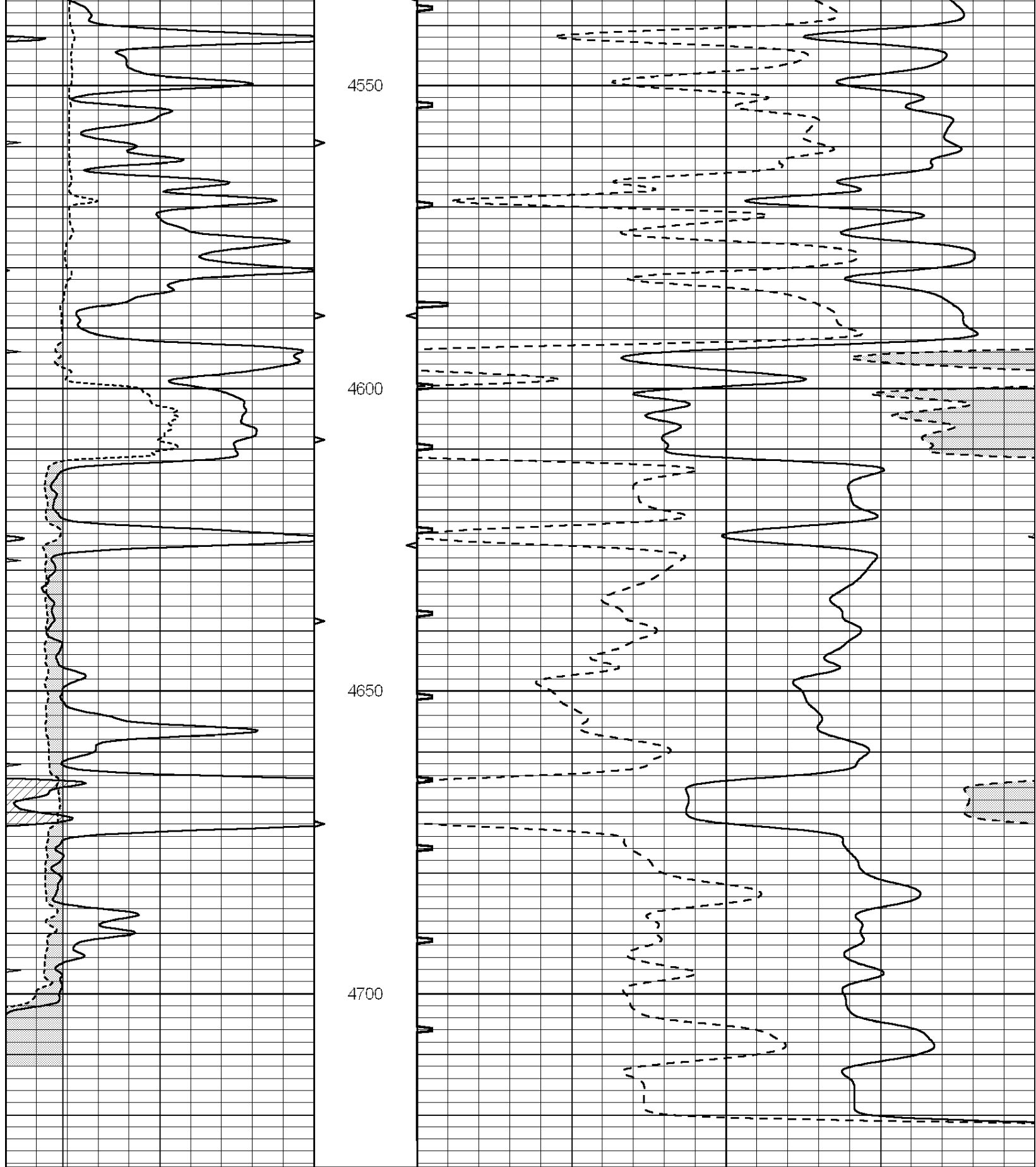
**SUPERIOR**  
Hays,  
Kansas

# REPEAT SECTION

Database File: 006951pe.db  
 Dataset Pathname: pass7.3  
 Presentation Format: slt  
 Dataset Creation: Wed Jul 06 09:21:53 2011 by Calc Open-Cased 090629  
 Charted by: Depth in Feet scaled 1:240

0	GAMMA RAY (GAPI)	150	ABHV	140	DELTA TIME (usec/ft)	40
6	MELCAL (in)	16	10 (ft3)	0 30	SONIC POROSITY (pu)	-10
0	MINMK	20	TBHV	0	ITT (msec)	20
			0 (ft3)	10		





0	GAMMA RAY (GAPI)	150	ABHV	140	DELTA TIME (usec/ft)	40
6	MELCAL (in)	16	10 (ft3)	0 30	SONIC POROSITY (pu)	-10
0	MINMK	20	TBHV	0	ITT (msec)	20
			0 (ft3)	10		