



**SUPERIOR**  
Hays,  
Kansas

**MICRO**  
LOG

Company **WHITE EXPLORATION, INC.**  
Well **RJD UNIT #1**  
Field  
County **HODGEMAN** State **KANSAS**

Company **WHITE EXPLORATION, INC.**  
Well **RJD UNIT #1**  
Field  
County **HODGEMAN**  
State **KANSAS**

Location: **API # : 05-083-21713-00**  
**200' FNL & 1970' FWL**  
**N/2 - N/2 - NE - NW**  
**SEC 1 TWP 23S RGE 24W**  
Permanent Datum **GROUND LEVEL** Elevation **2325**  
Log Measured From **KELLY BUSHING 5' A.G.L.**  
Drilling Measured From **KELLY BUSHING**

Other Services  
**CDL/CNL/PE**  
**DIL/SON**  
Elevation  
K.B. 2330  
D.F. 2328  
G.L. 2325

Date	7-6-11
Run Number	TWO
Depth Driller	4718
Depth Logger	4721
Bottom Logged Interval	4703
Top Log Interval	2400
Casing Driller	261
Casing Logger	259
Bit Size	7.875
Type Fluid in Hole	CHEMICAL MUD
Density / Viscosity	9.7 / 46
pH / Fluid Loss	9.5 / 11.6
Source of Sample	FLOWLINE
Rim @ Meas. Temp	0.70 @ 92F
Rmf @ Meas. Temp	0.53 @ 92F
Rmc @ Meas. Temp	0.84 @ 92F
Source of Rmf / Rmc	MEASURED
Rim @ BHT	0.53 @ 122F
Time Circulation Stopped	2 HOURS
Time Logger on Bottom	
Maximum Recorded Temperature	122F
Equipment Number	860
Location	HAYS, KS.
Recorded By	JEFF GRONEWEG
Witnessed By	LARRY FRIEND

<<< Fold Here >>>

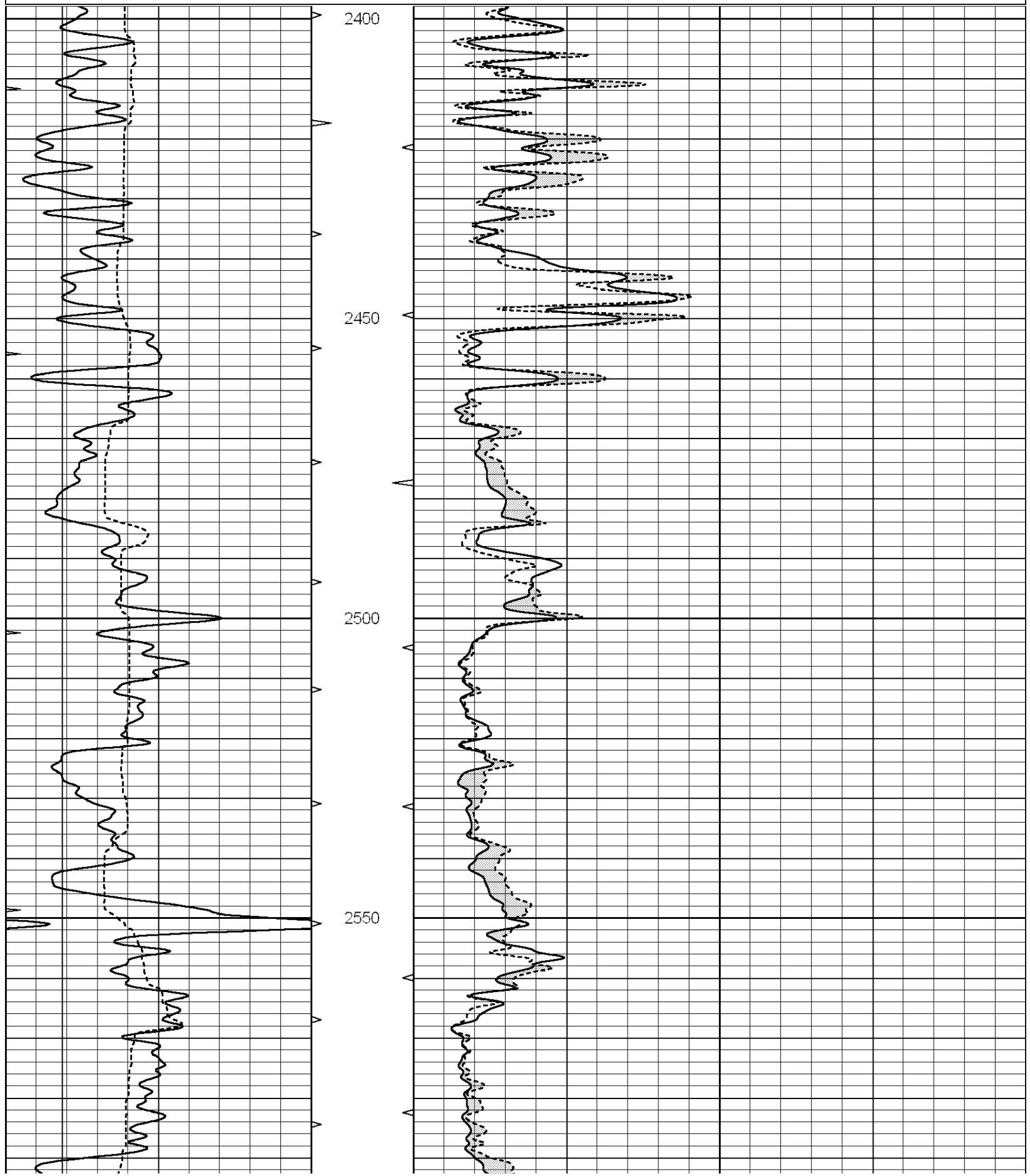
All interpretations are opinions based on inferences from electrical or other measurements and we cannot and do not guarantee the accuracy or correctness of any interpretation, and we shall not, except in the case of gross or willful negligence on our part, be liable or responsible for any loss, costs, damages, or expenses incurred or sustained by anyone resulting from any interpretation made by any of our officers, agents or employees. These interpretations are also subject to our general terms and conditions set out in our current Price Schedule.

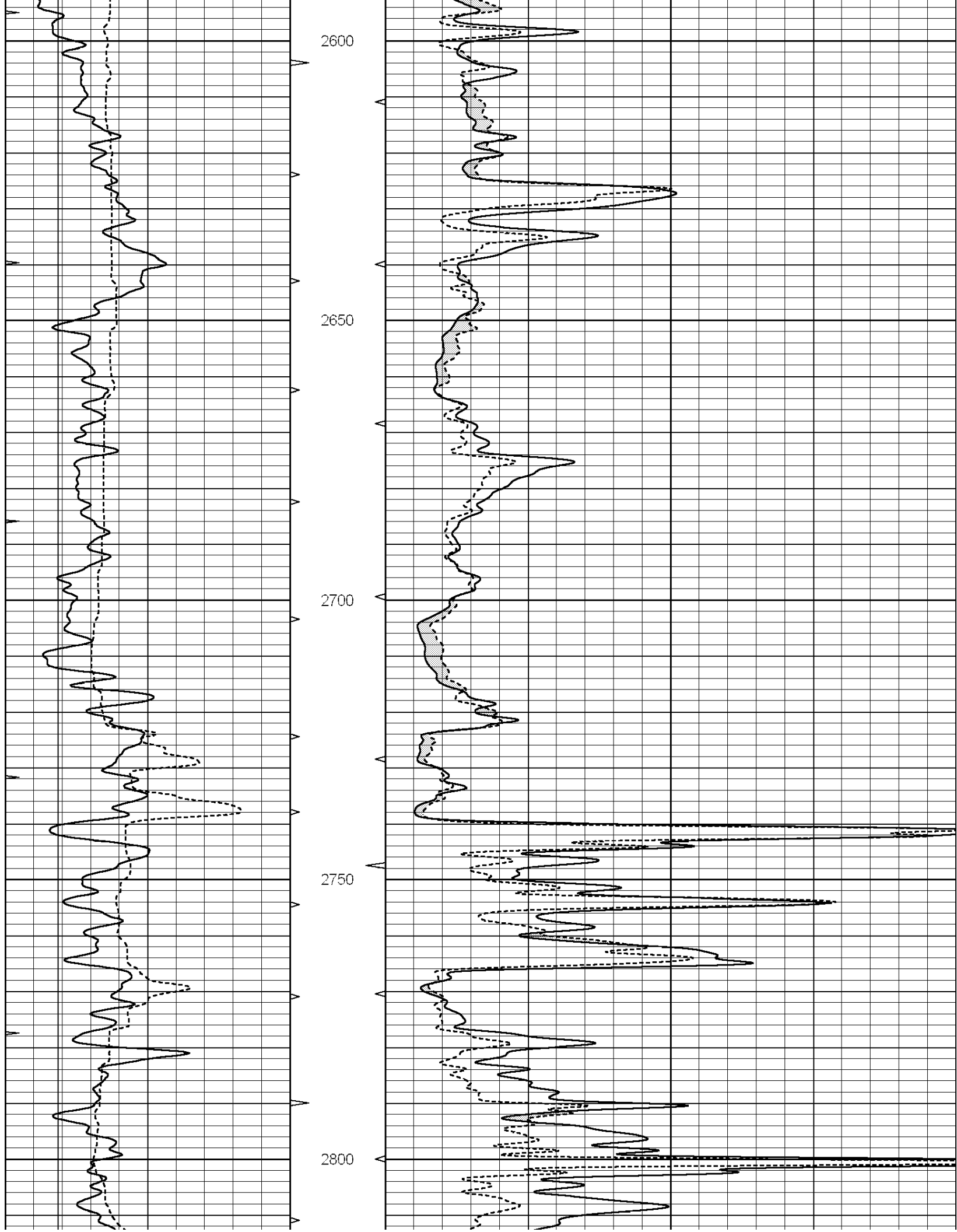
**Comments**

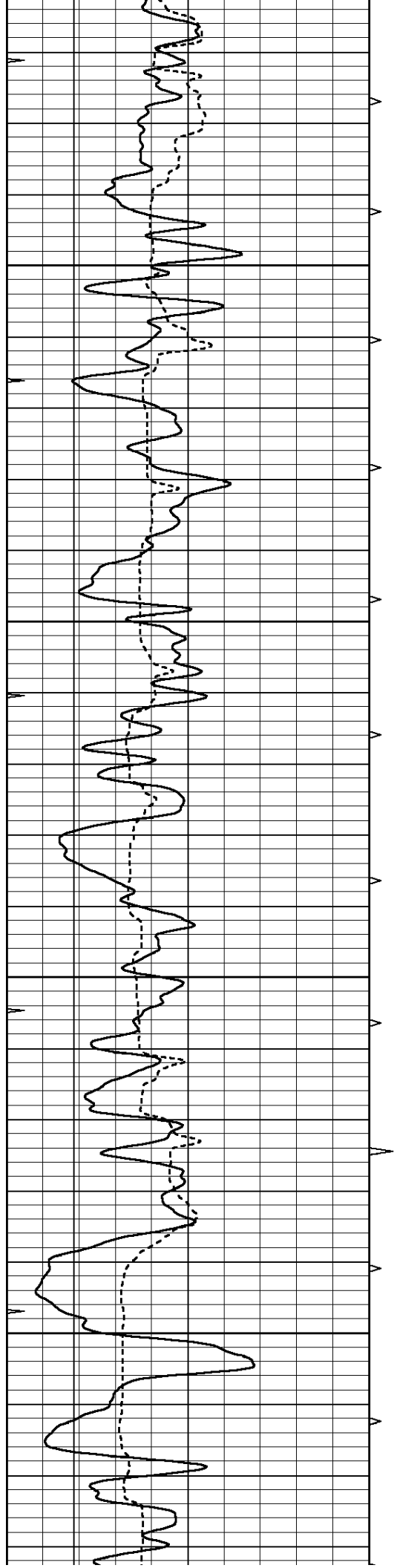
**SUPERIOR WELL SERVICES**  
 785-628-6395  
**THANK YOU FOR YOUR BUSINESS**  
**DIRECTIONS: WEST EDGE OF JETMORE, KS - 1/2 MILE SOUTH TO T IN ROAD - 1/4 MILE WEST**  
**NORTH & WEST INTO**

0	GAMMA RAY (GAPI)	150
6	MELCAL (in)	16
0	MINMK	20

0	MEL1.5 (Ohm-m)	40
0	MEL2.0 (Ohm-m)	40





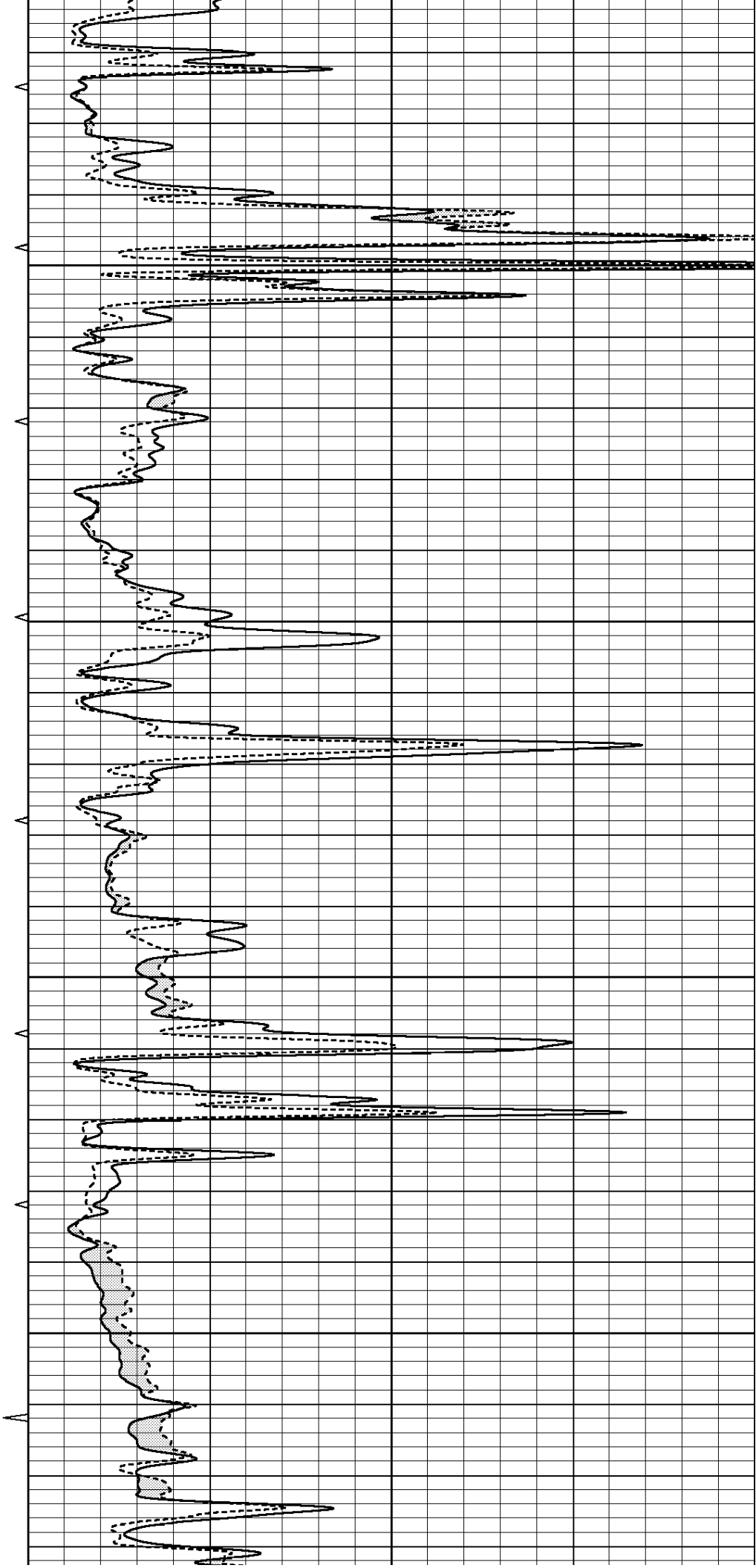


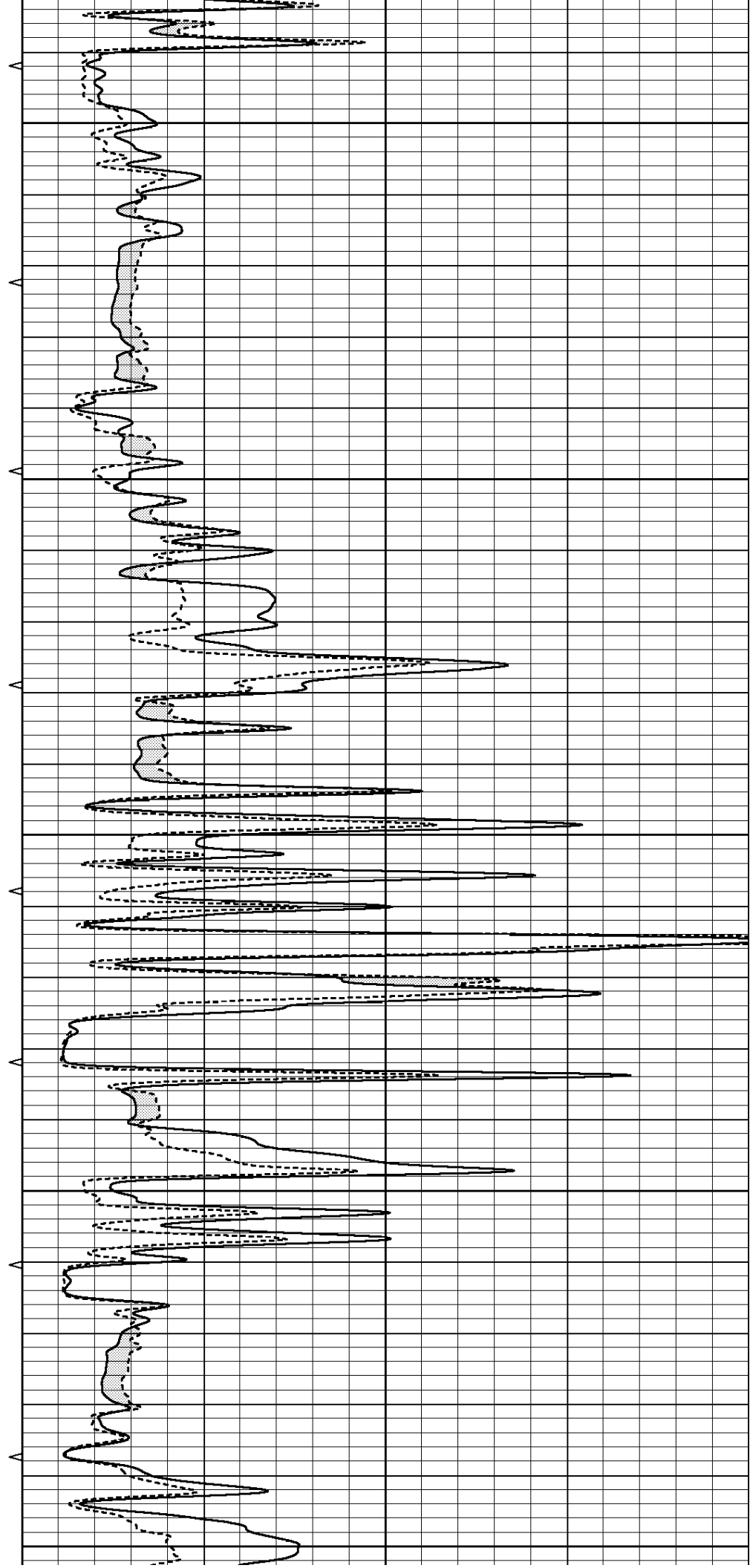
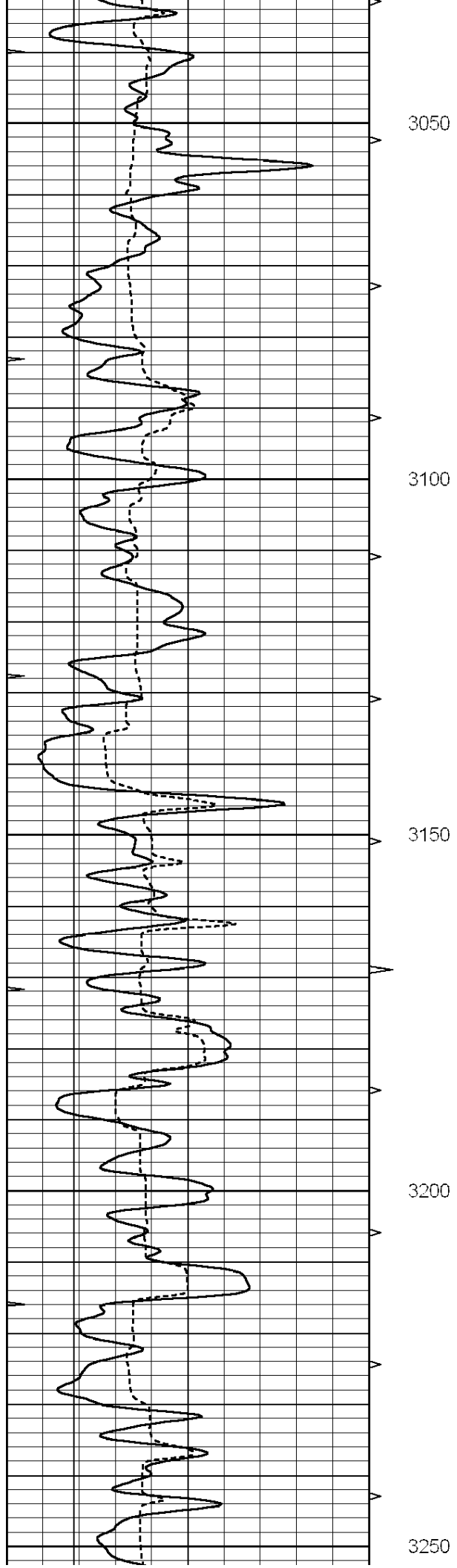
2850

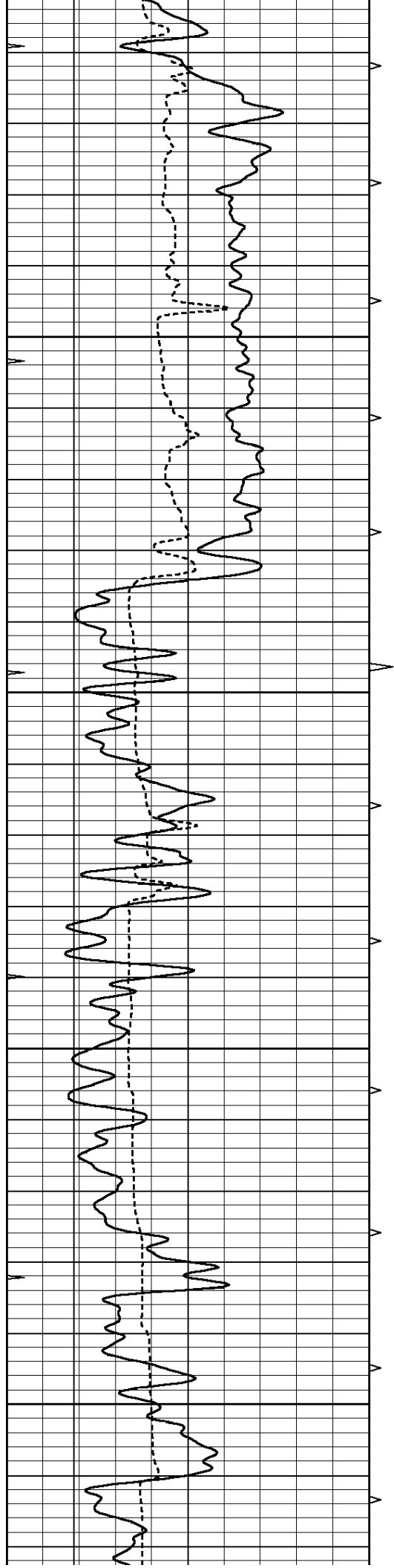
2900

2950

3000





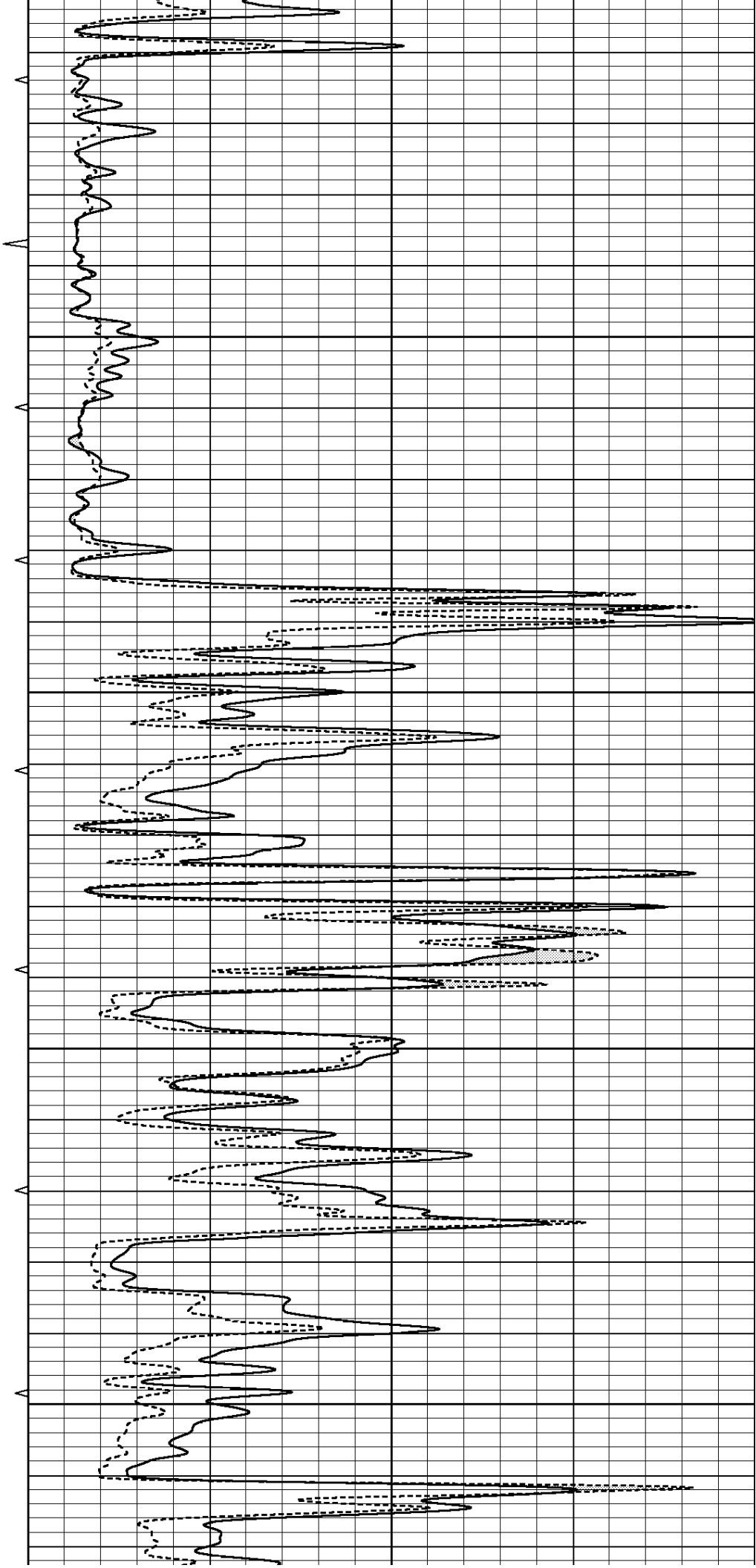


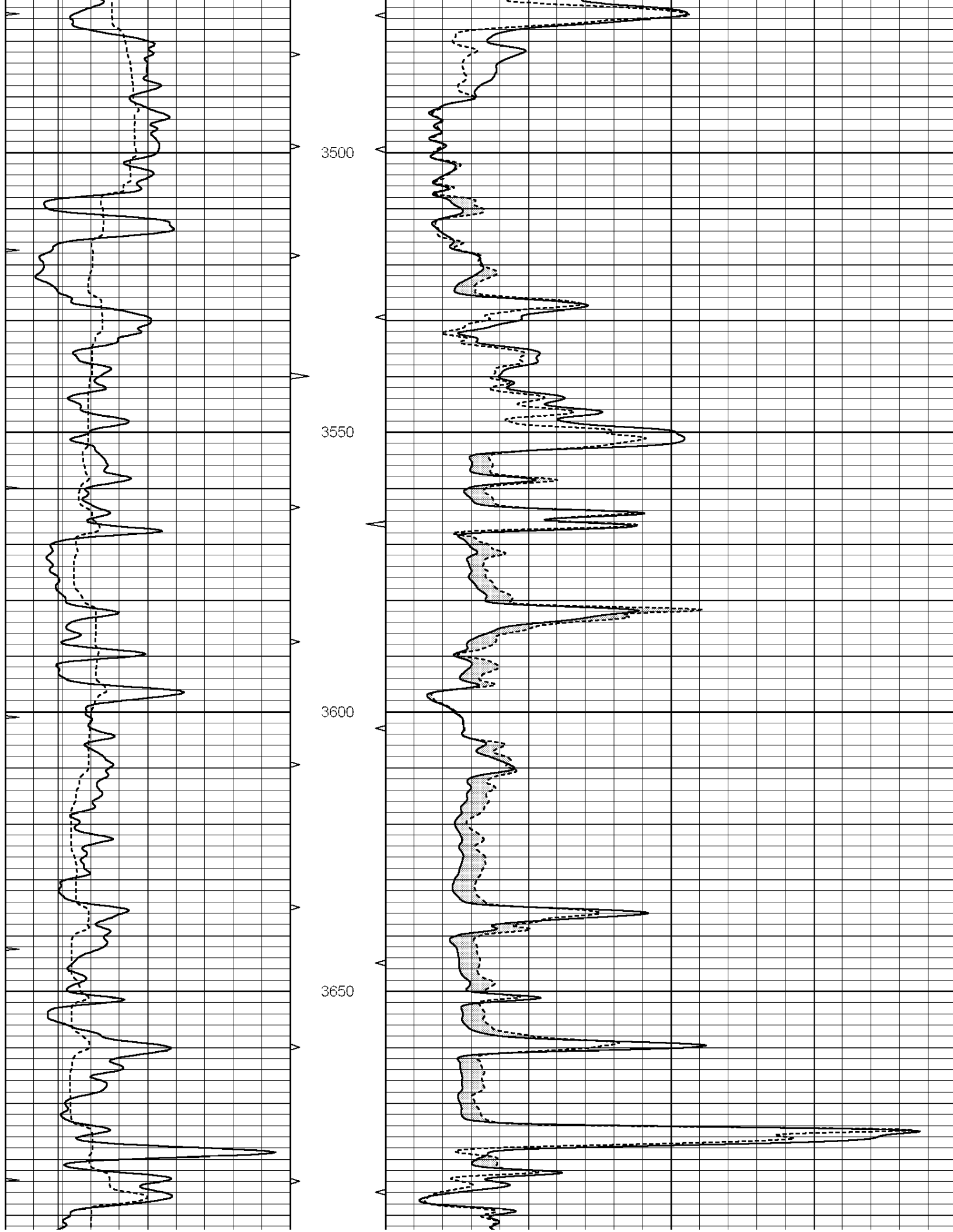
3300

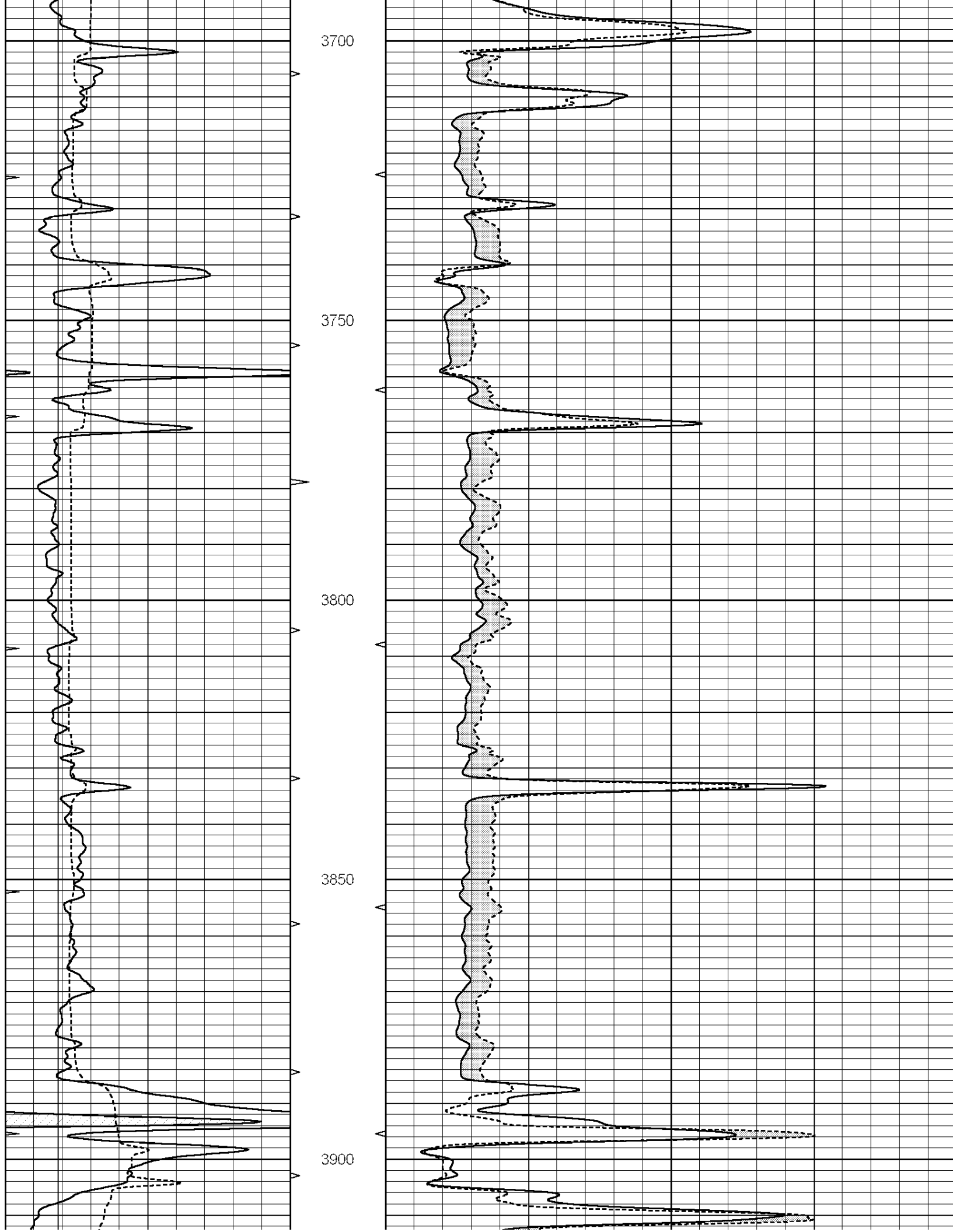
3350

3400

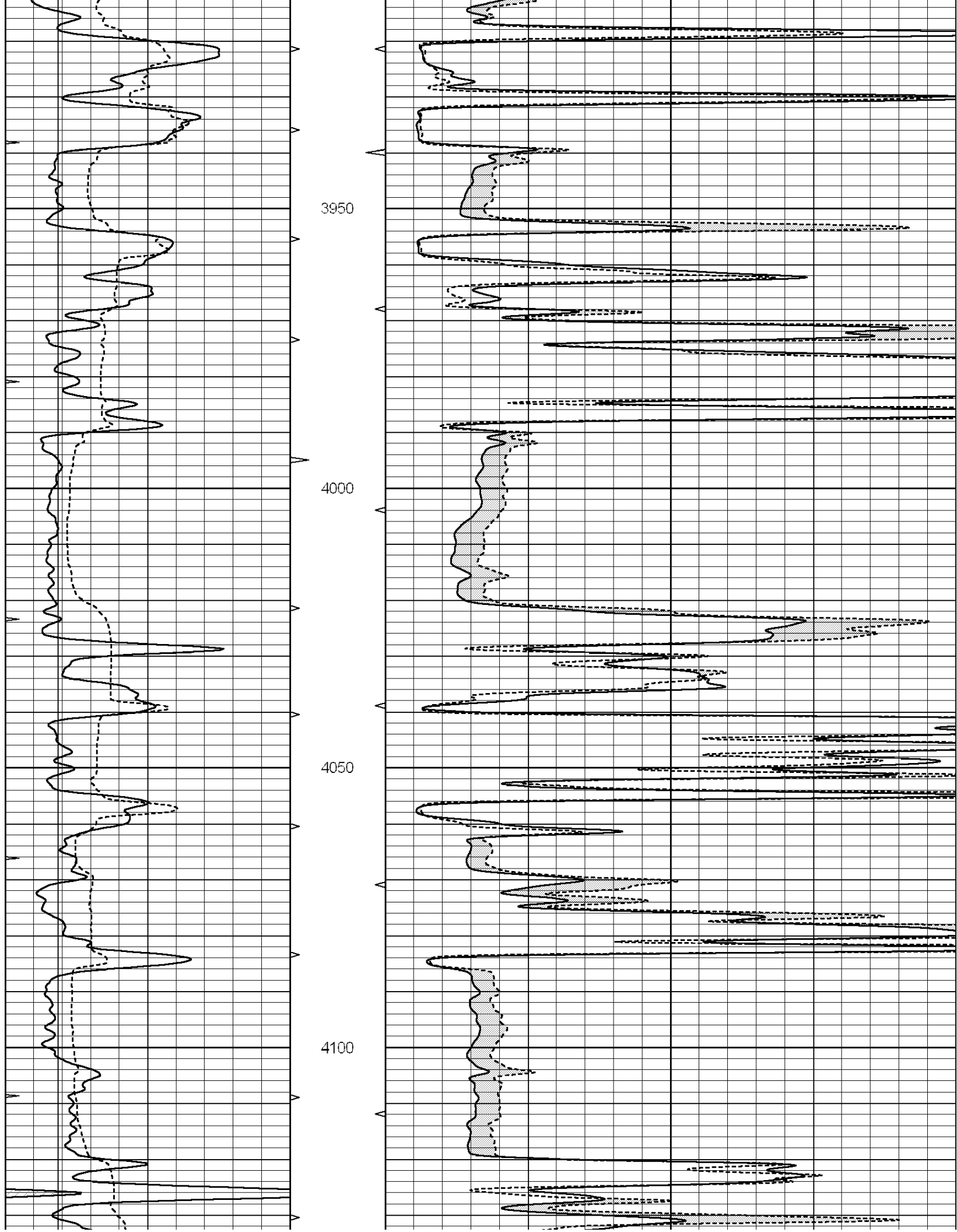
3450

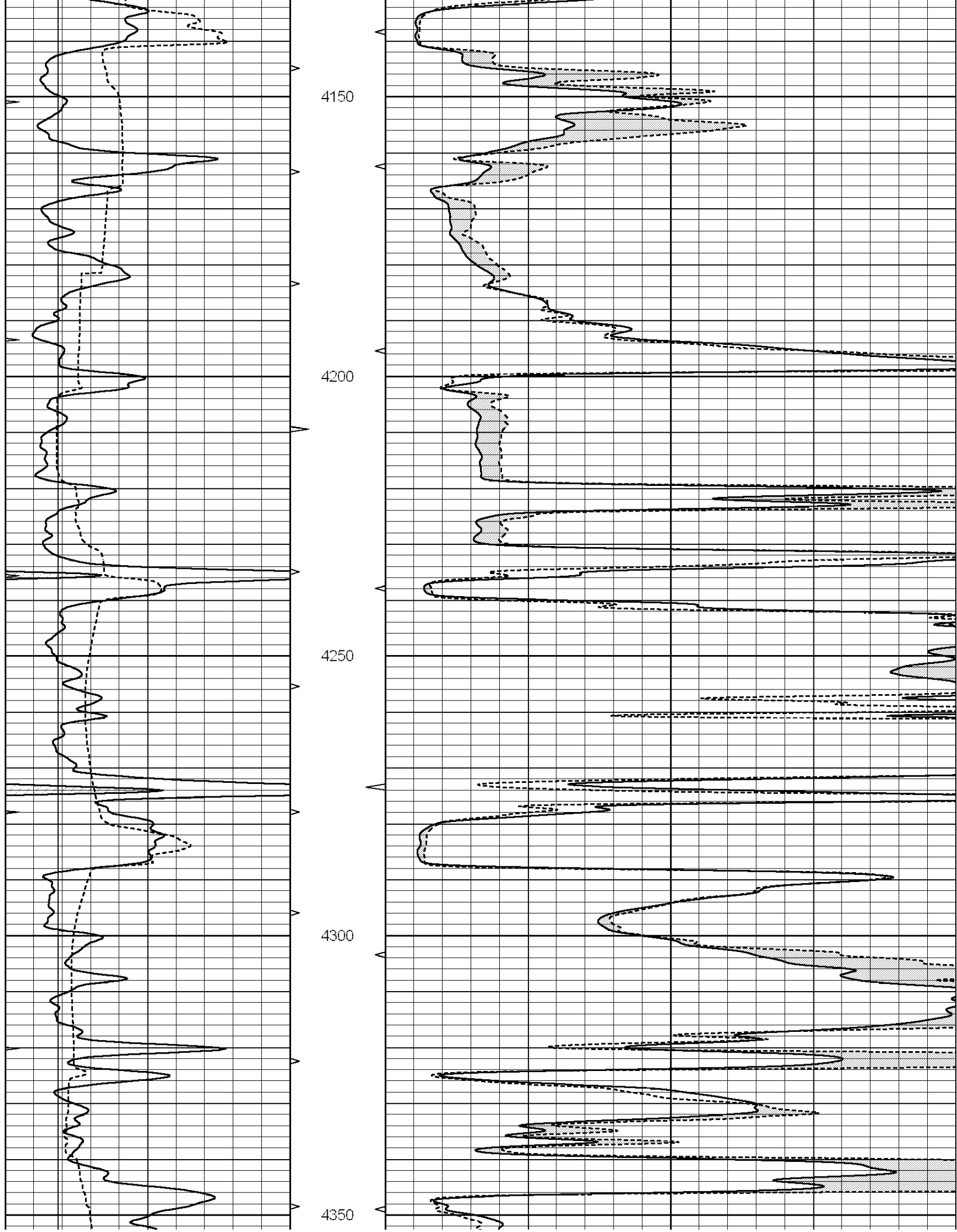


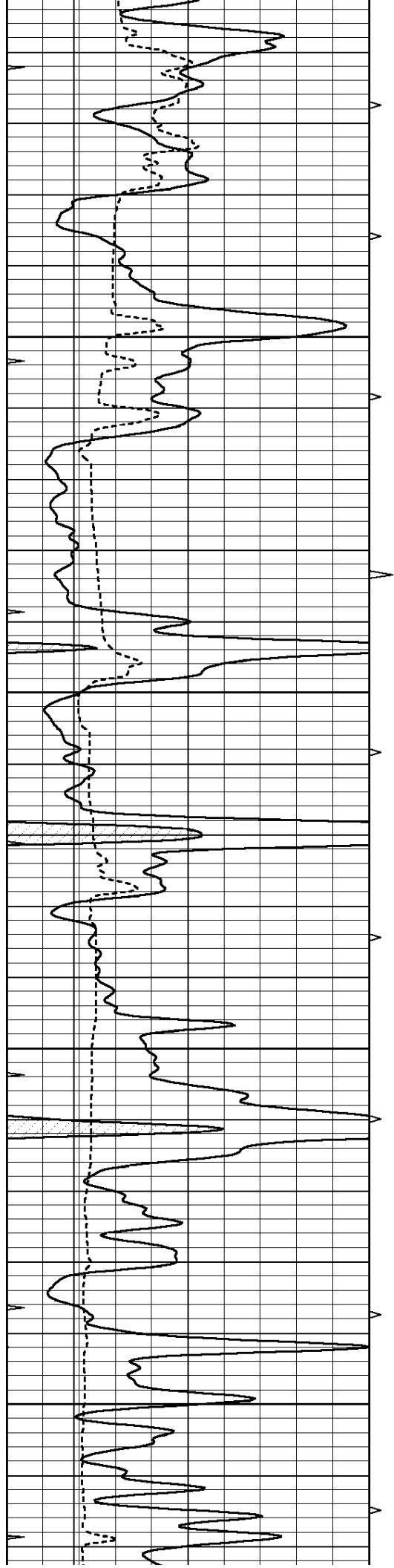










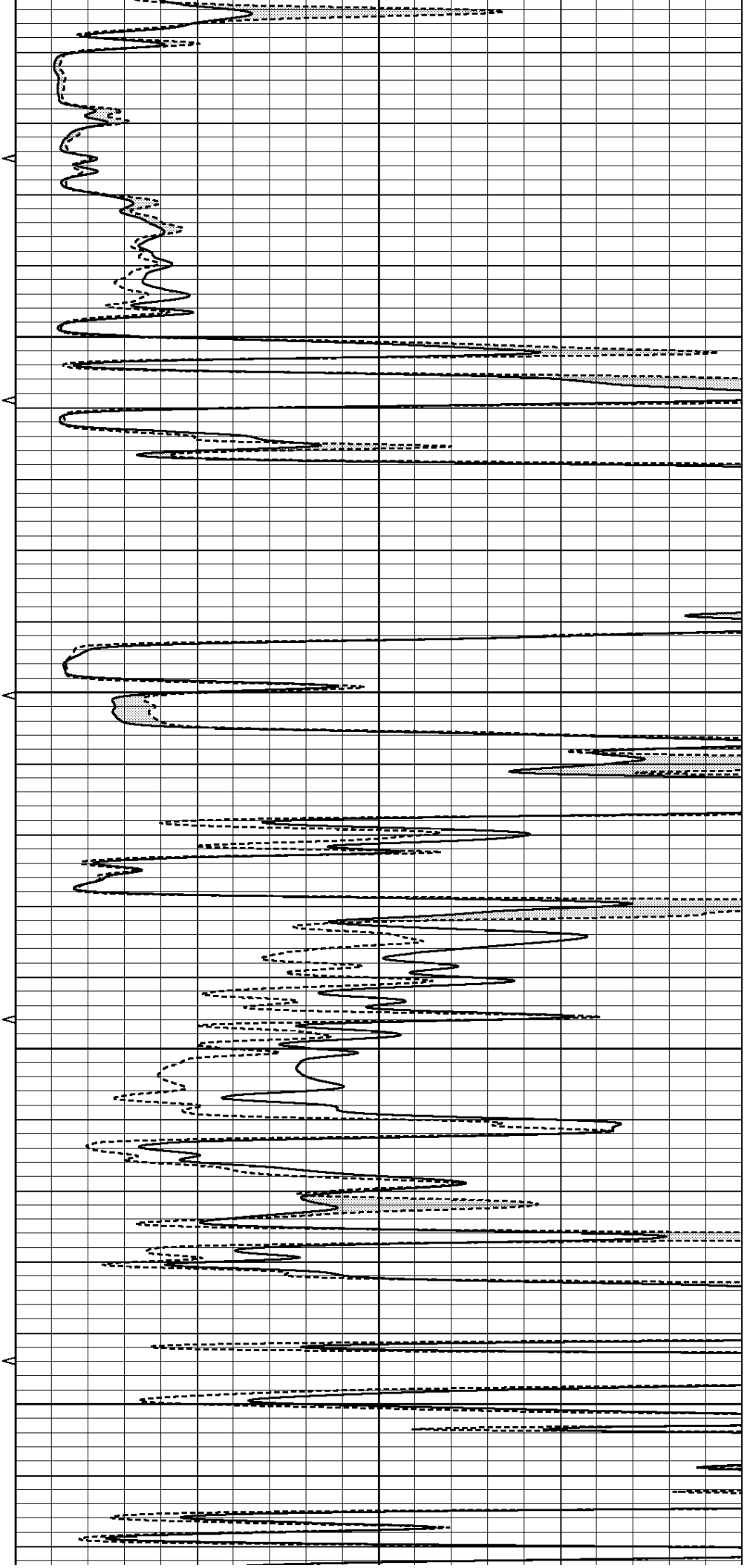


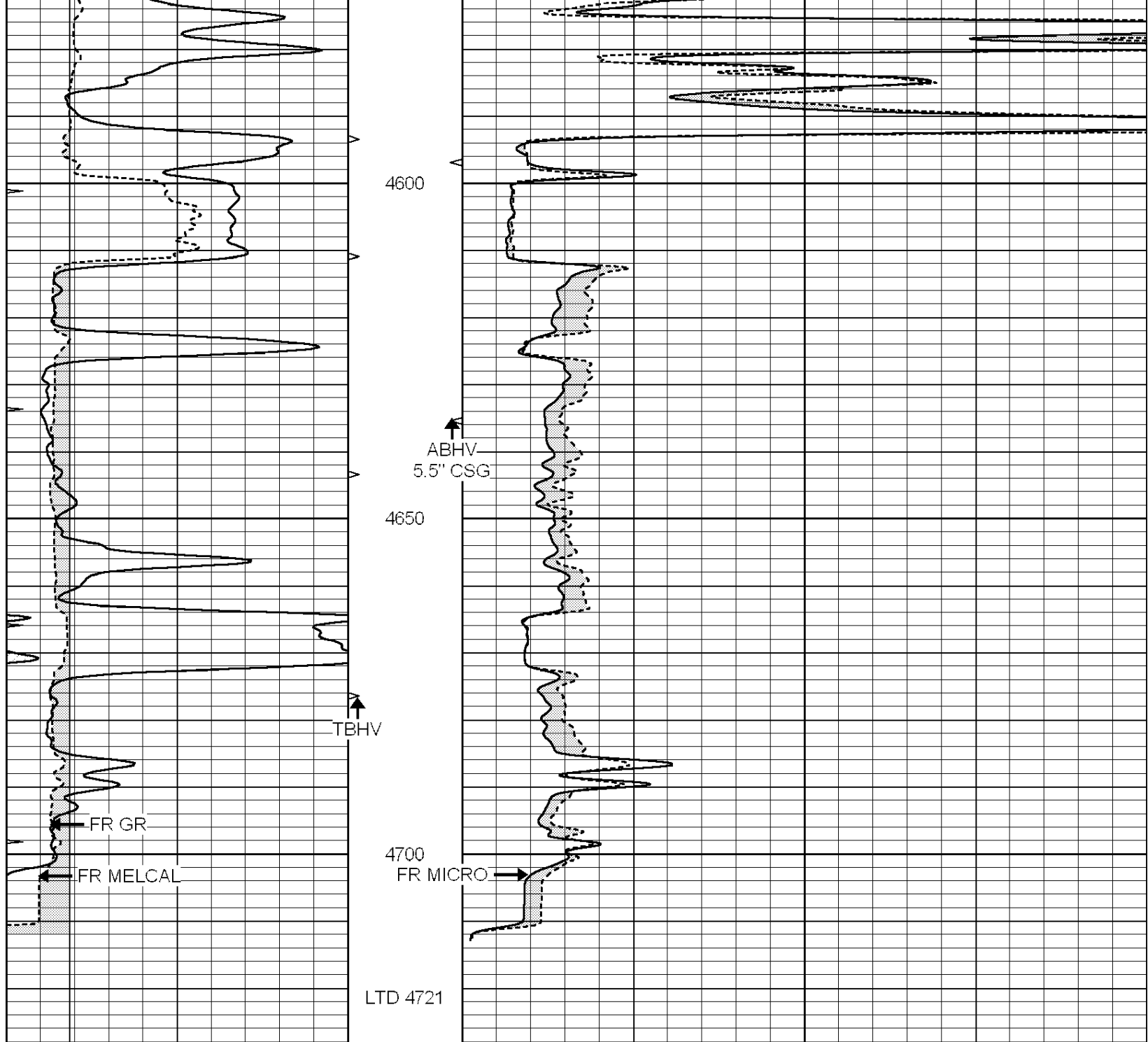
4400

4450

4500

4550





0	GAMMA RAY (GAPI)	150
6	MELCAL (in)	16
0	MINMK	20

0	MEL1.5 (Ohm-m)	40
0	MEL2.0 (Ohm-m)	40



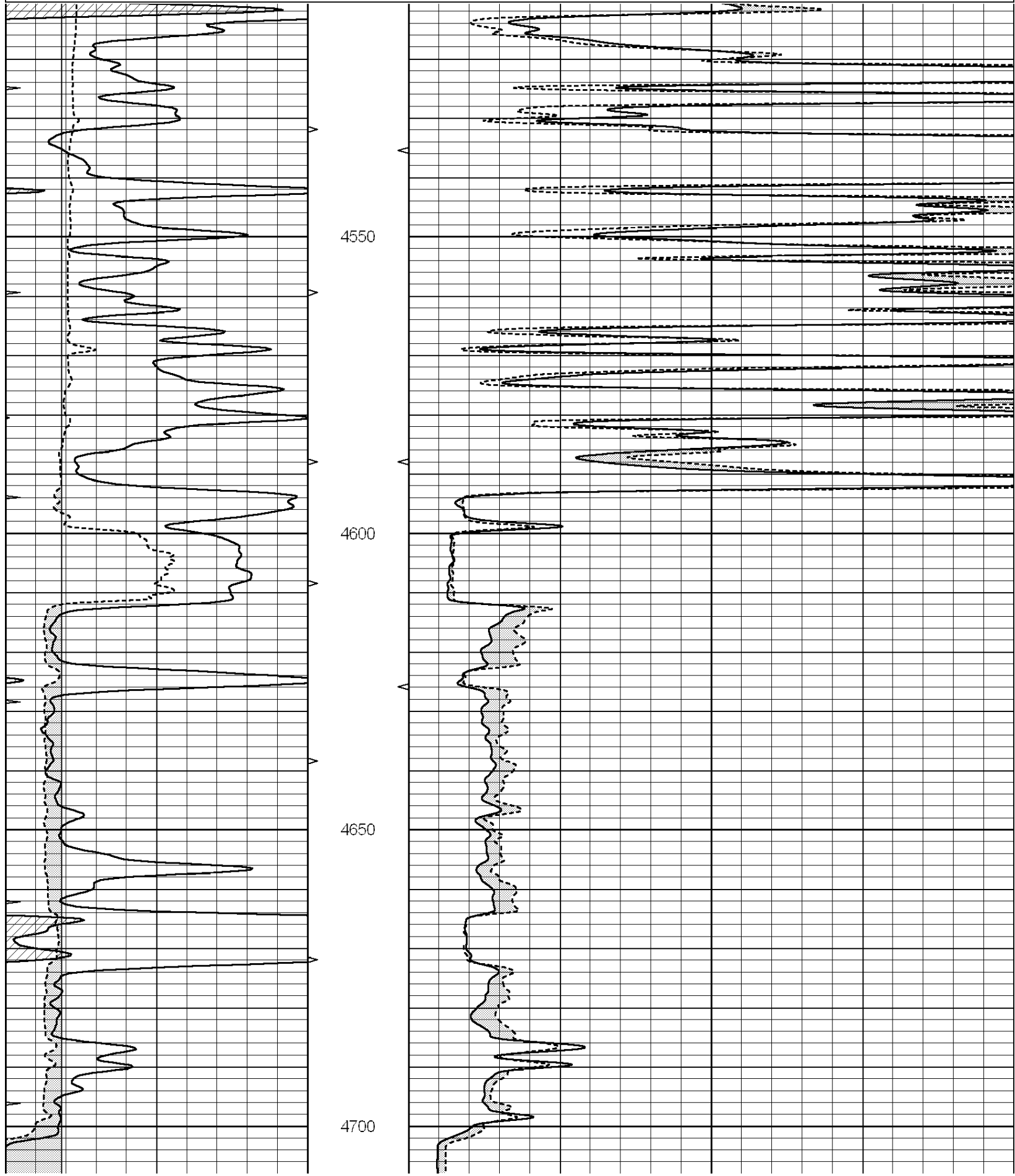
SUPERIOR  
Hays,  
Kansas

# REPEAT SECTION

Database File: 006951pe.db  
 Dataset Pathname: pass7.3  
 Presentation Format: micro  
 Dataset Creation: Wed Jul 06 09:21:53 2011 by Calc Open-Cased 090629  
 Charted by: Depth in Feet scaled 1:240

0	GAMMA RAY (GAPI)	150
6	MELCAL (in)	16
0	MINMK	20

0	MEL1.5 (Ohm-m)	40
0	MEL2.0 (Ohm-m)	40



0	GAMMA RAY (GAPI)	150
6	MELCAL (in)	16
0	MINMK	20

0	MEL1.5 (Ohm-m)	40
0	MEL2.0 (Ohm-m)	40

### Calibration Report

Database File: 006951pe.db  
 Dataset Pathname: pass8.2  
 Dataset Creation: Wed Jul 06 09:37:21 2011 by Calc Open-Cased 090629

#### MICRO Calibration Report

Serial Number:	Micro1	
Tool Model:	ProbeL	
Performed:	Fri Jul 01 15:40:43 2011	
Caliper Calibration:	Gain=2.806	Offset=-0.773
References	Low Cal 7.600	High Cal 13.000
Readings	3.233	5.157
1.5" Calibration:	Gain=42.000	Offset=0.500
References	Low Cal 0.000	High Cal 20.000
Readings	0.003	0.844
2" Calibration:	Gain=30.000	Offset=0.600
References	Low Cal 0.000	High Cal 20.000
Readings	0.028	0.817

#### Gamma Ray Calibration Report

Serial Number:	GR1	
Tool Model:	OPEN	
Performed:	Sat Nov 05 02:41:33 2005	
Calibrator Value:	1.0	GAPI
Background Reading:	0.0	cps
Calibrator Reading:	1.0	cps
Sensitivity:	0.2800	GAPI/cps