

Company: **RENDA ENERGY, LLC**
Well: **SEIFERT #1-27**

County: **HARPER** State: **KANSAS**
Field: **WILDCAT**

Location: **SEC. 27 T15N R18E S19E**
Well: **115' FNL & 150' FNL**

Company: **RENDA ENERGY, LLC**
Well: **SEIFERT #1-27**
Field: **WILDCAT**
County: **HARPER**
State: **KANSAS**
Location: **SEC. 27 T15N R18E S19E**

Operator: **GROUND LEVEL SERVICES**
Log Measured From: **KELLY BUSHING**
Date: **JANUARY 13, 2012**
Log Interval: **5355 - 5365**

Operator: **GROUND LEVEL SERVICES**
Log Measured From: **KELLY BUSHING**
Date: **JANUARY 13, 2012**
Log Interval: **5355 - 5365**

Operator: **GROUND LEVEL SERVICES**
Log Measured From: **KELLY BUSHING**
Date: **JANUARY 13, 2012**
Log Interval: **5355 - 5365**

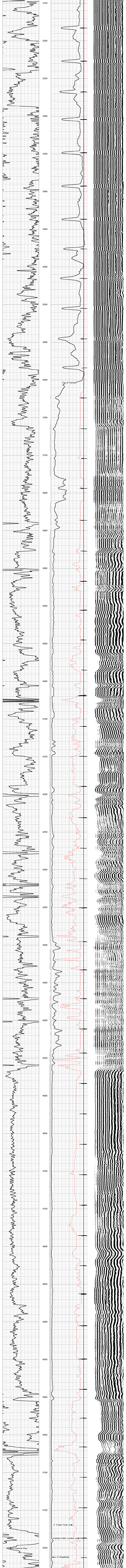
Operator: **GROUND LEVEL SERVICES**
Log Measured From: **KELLY BUSHING**
Date: **JANUARY 13, 2012**
Log Interval: **5355 - 5365**

Operator: **GROUND LEVEL SERVICES**
Log Measured From: **KELLY BUSHING**
Date: **JANUARY 13, 2012**
Log Interval: **5355 - 5365**

Comments: THANKS FOR USING PERF-TECH WIRELINE BLUFF CITY 12 SOUTH 1 EAST SOUTH INTO

Perf-Tech Wireline Services **MAIN PASS**

Database File: 01131208.db
Dataset Pathname: pass3
Presentation Format: CBL3-5
Dataset Creation: Fri Jan 13 08:16:30 2012 by Log Warrior Version 6.6
Charted by: Depth in Feet scaled 1.240



Perf-Tech Wireline Services **REPEAT SECTION**

Database File: 01131208.db
Dataset Pathname: pass2
Presentation Format: CBL3-5
Dataset Creation: Fri Jan 13 08:11:26 2012 by Log Warrior Version 6.6
Charted by: Depth in Feet scaled 1.240

