



SUPERIOR
Hays,
Kansas

**COMPENSATED
DENSITY/NEUTRON
LOG**

Company EAGLE CREEK CORPORATION
Well WEDMAN UNIT #1-6
Field
County BUTLER
State KANSAS

Company EAGLE CREEK CORPORATION
Well WEDMAN UNIT #1-6
Field
County BUTLER State KANSAS

Location: 2300' FNL & 7700' FEL
API # : 15-015-23933-0000
Other Services DIL/MEL
SEC 6 TWP 28S RGE 8E
Permanent Datum GROUND LEVEL Elevation 1547
Log Measured From KELLY BUSHING 9' A.G.L.
Drilling Measured From KELLY BUSHING
Elevation
K.B. 1556
D.F. 1554
G.L. 1547

Date	1/18/12		
Run Number	ONE		
Depth Driller	3200		
Depth Logger	3199		
Bottom Logged Interval	3175		
Top Log Interval	2000		
Casing Driller	8 5/8" @ 221		
Casing Logger	220		
Bit Size	7 7/8		
Type Fluid In Hole	CHEMICAL MUD	CHLORIDES 1400 PPM	
Density / Viscosity	9.3/35		
pH / Fluid Loss	9.4/9.0		
Source of Sample	FLOWLINE		
Rin @ Meas. Temp	3.00 @ 46F		
Rmf @ Meas. Temp	2.25 @ 46F		
Rmc @ Meas. Temp	3.60 @ 46F		
Source of Rmf / Rmc	MEASURED		
Rin @ BHT	1.27 @ 109F		
Time Circulation Stopped	12 HOURS		
Time Logger on Bottom			
Maximum Recorded Temperature	109F		
Equipment Number	680		
Location	HAYS, KS.		
Recorded By	JEFF GRONEMEG		
Witnessed By	DAVE CALLEWAERT		

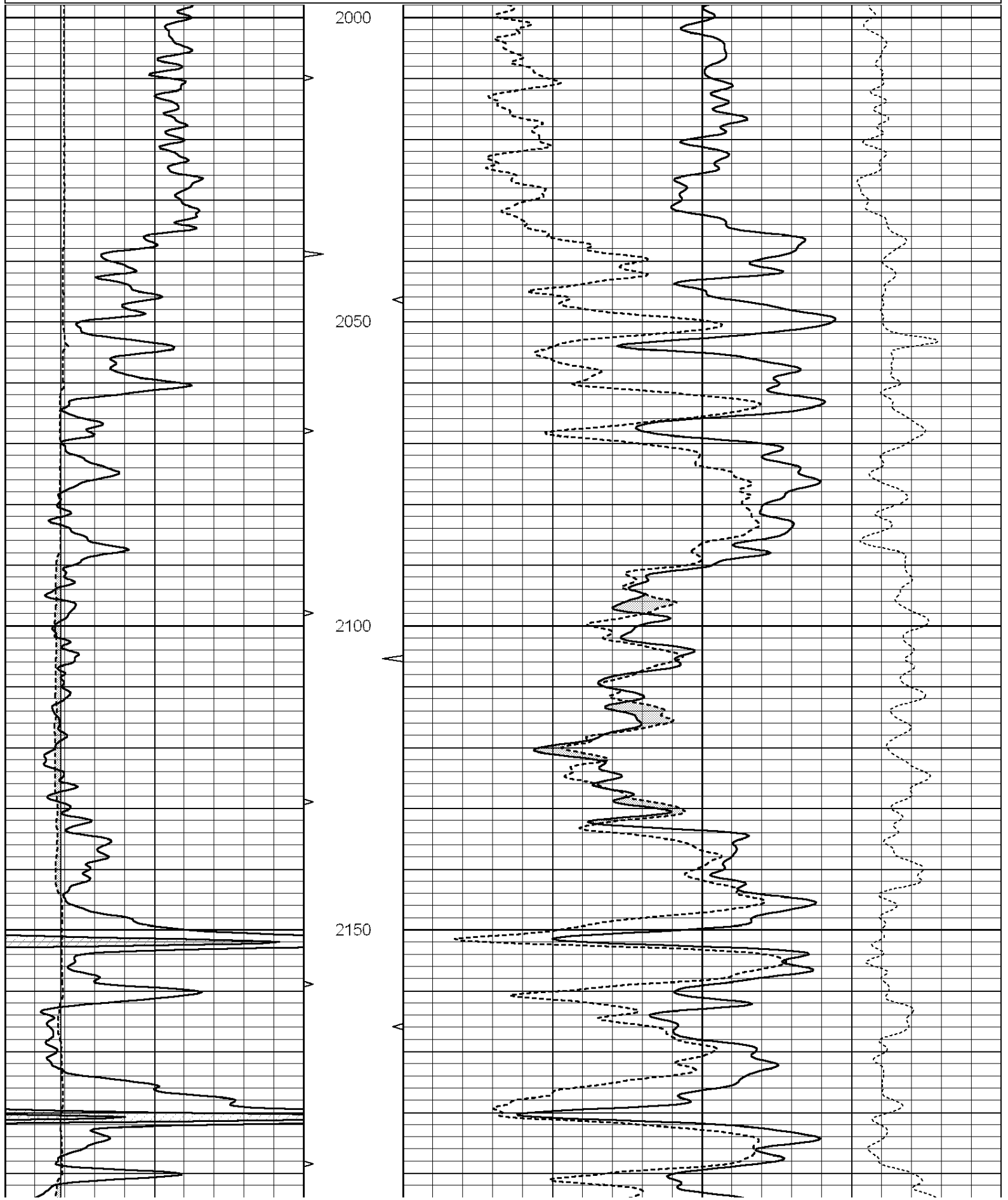
<<< Fold Here >>>

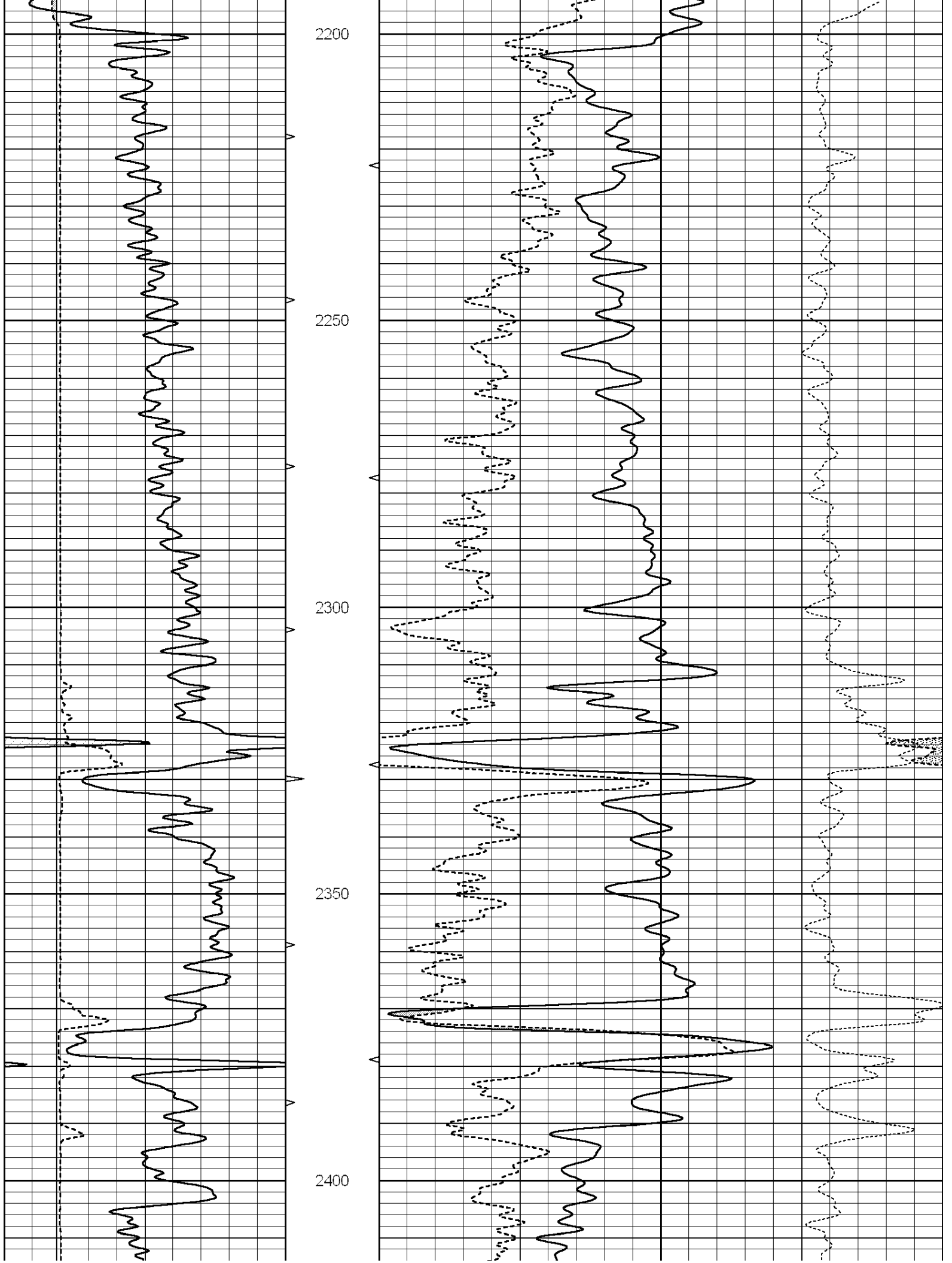
All interpretations are opinions based on inferences from electrical or other measurements and we cannot and do not guarantee the accuracy or correctness of any interpretation, and we shall not, except in the case of gross or willful negligence on our part, be liable or responsible for any loss, costs, damages, or expenses incurred or sustained by anyone resulting from any interpretation made by any of our officers, agents or employees. These interpretations are also subject to our general terms and conditions set out in our current Price Schedule.

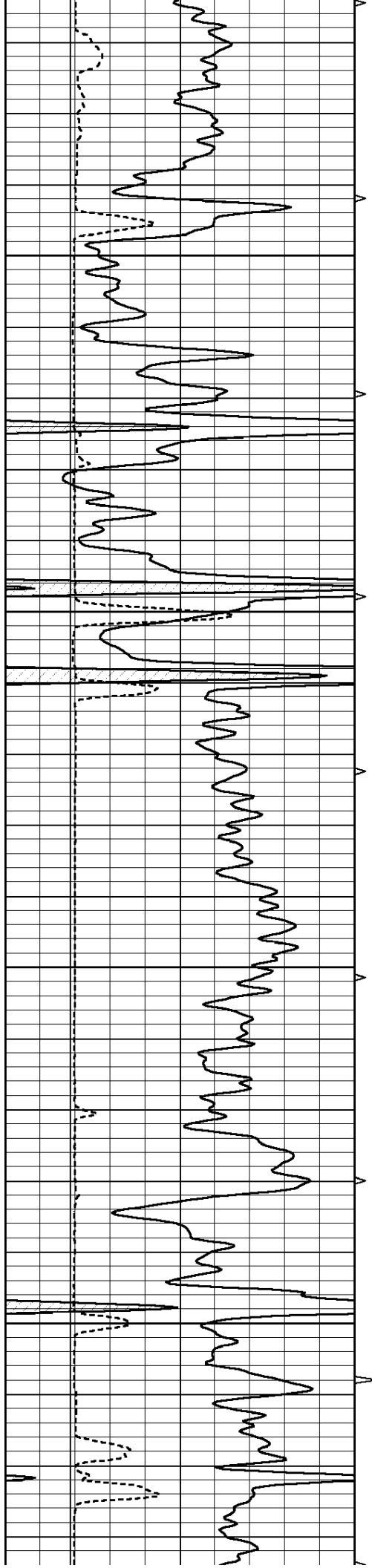
Comments

THANK YOU FOR USING SUPERIOR WELL SERVICE (785) 628-6395
DIRECTIONS
LEON, KS - 12 MILES EAST TO TALLGRASS RD - 1 MILE SOUTH TO RED GATE
1/2 MILE WEST - 1 MILE SOUTH INTO THROUGH PASTURE

0	GAMMA RAY (GAPI)	150	ABHV	30	COMPENSATED DENSITY (pu)	-10
6	CALIPER (in)	16	10 (ft3)	0 30	COMPENSATED NEUTRON (pu)	-10
			TBHV		-0.25 CORRECTION (g/cc)	0.25
			0 (ft3)	10		





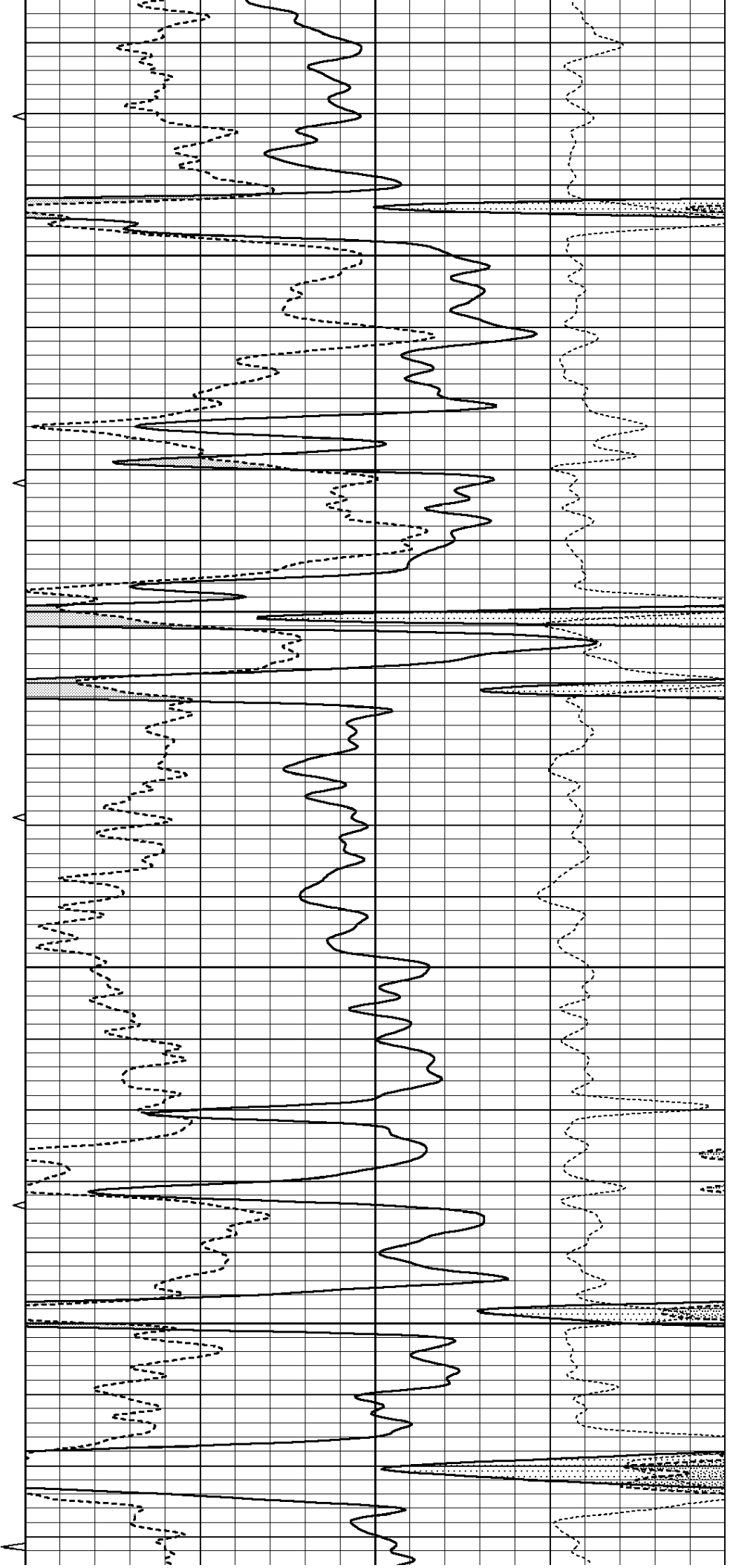


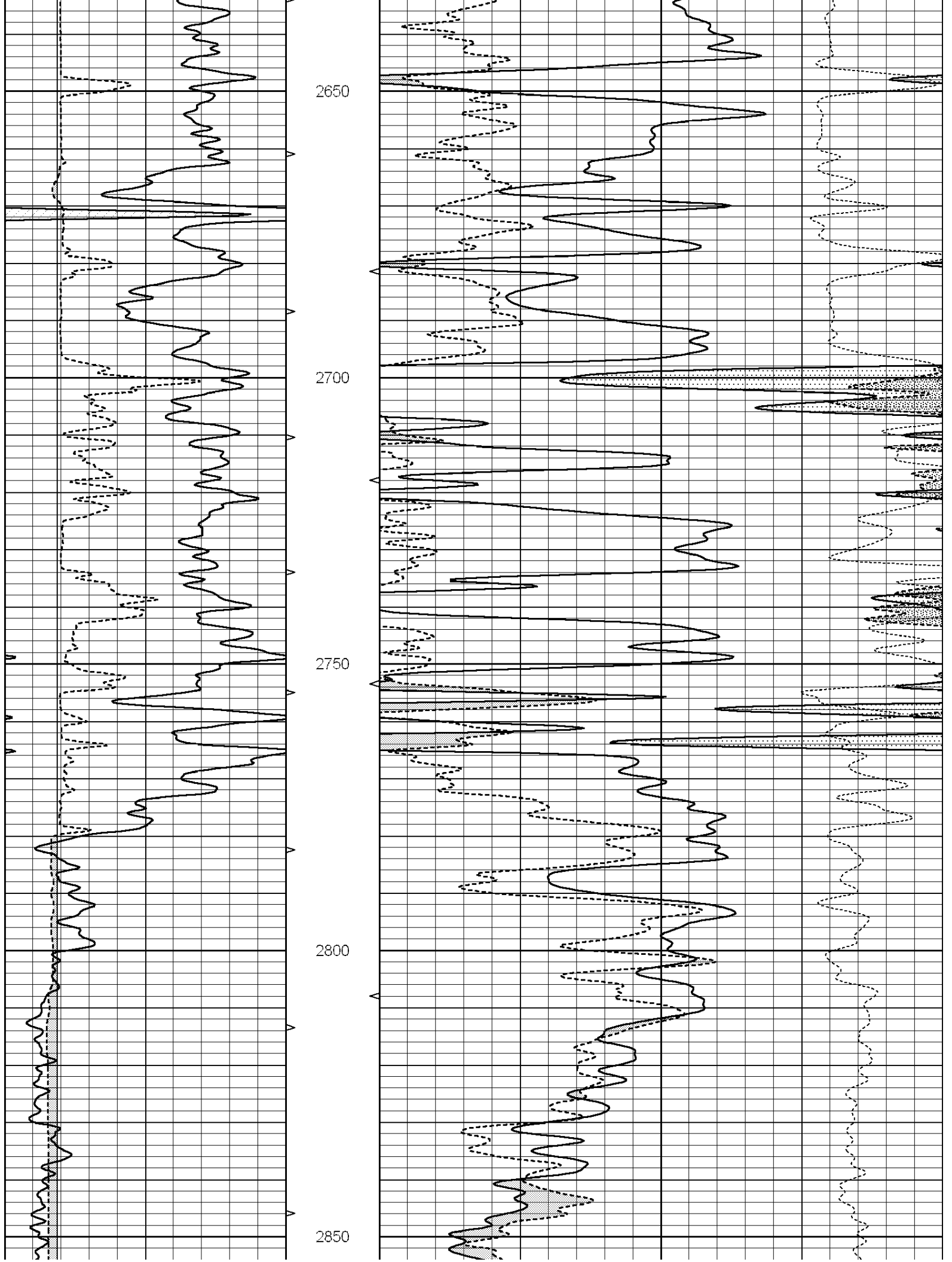
2450

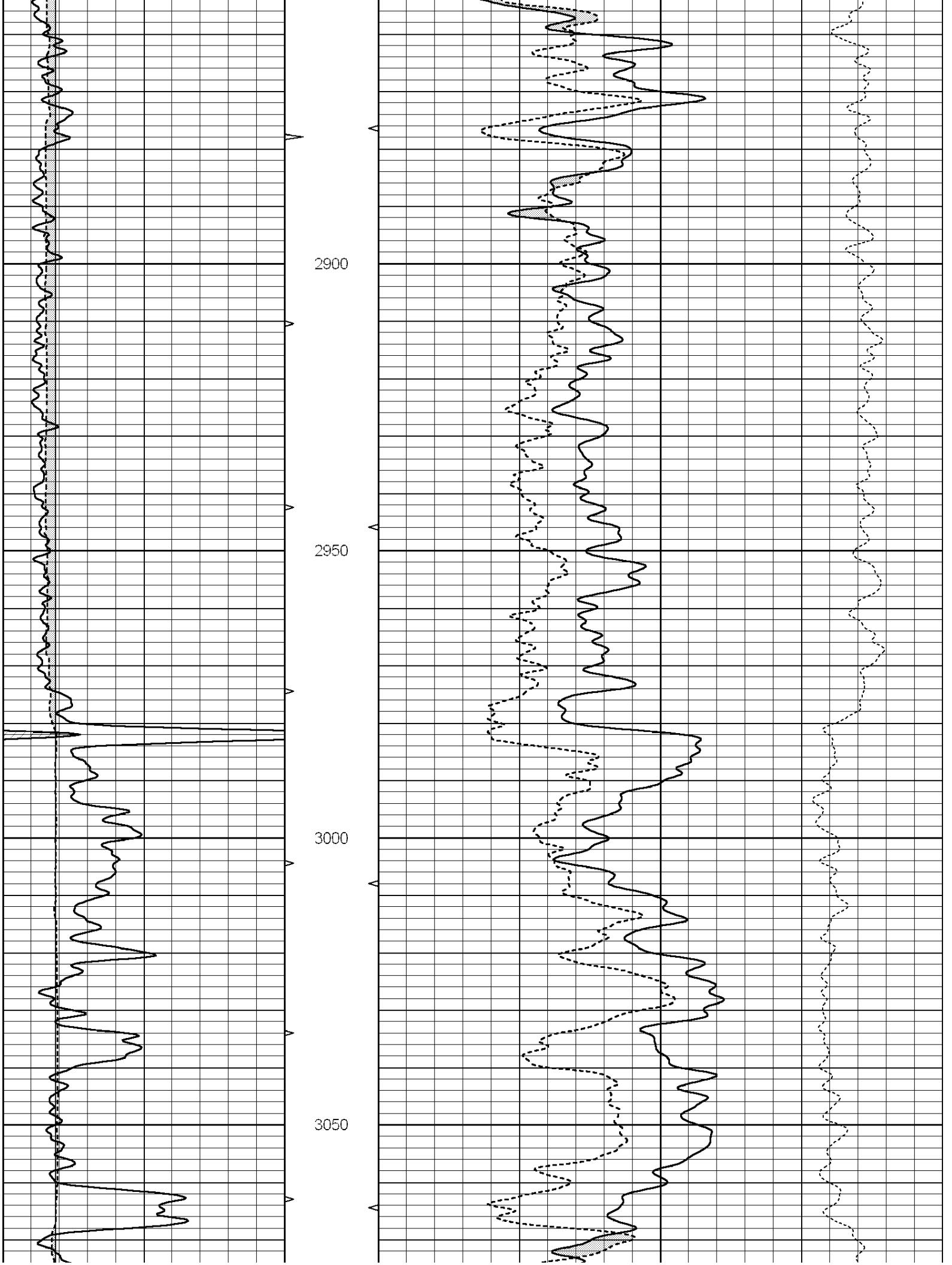
2500

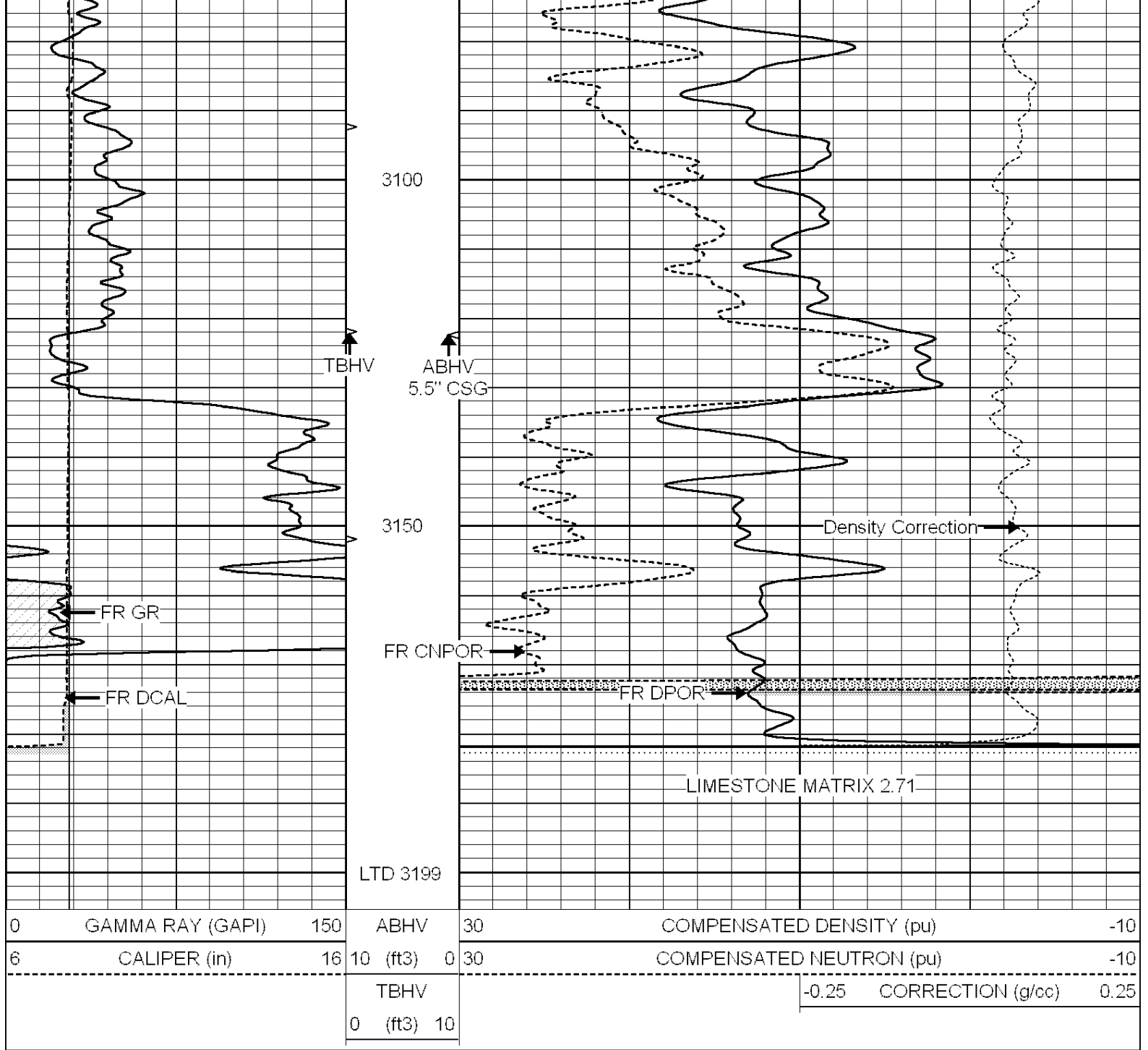
2550

2600







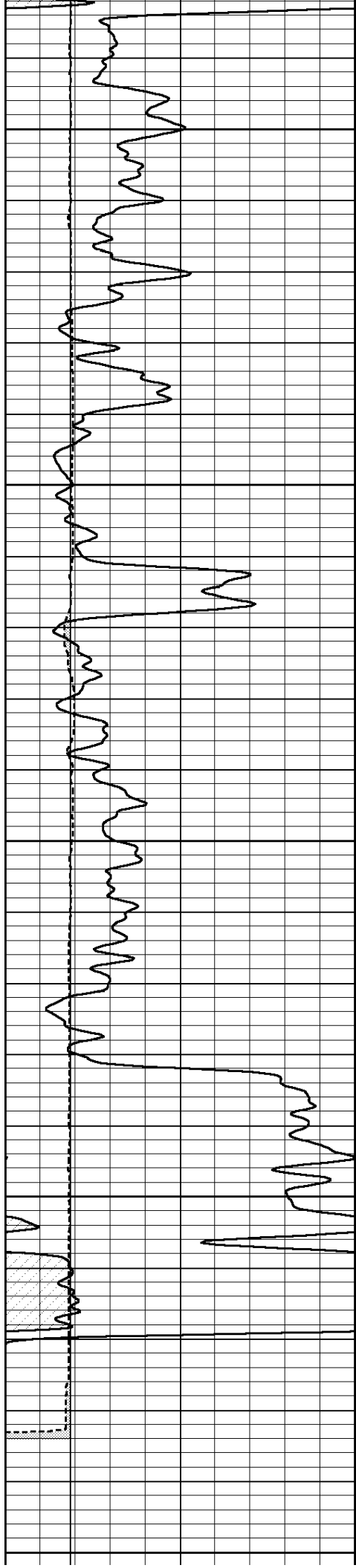


SUPERIOR
Hays,
Kansas

REPEAT SECTION

Database File: 008676ddn.db
 Dataset Pathname: pass2.2
 Presentation Format: ldtneuwo
 Dataset Creation: Wed Jan 18 12:17:22 2012 by Calc Open-Cased 090629
 Charted by: Depth in Feet scaled 1:240

0	GAMMA RAY (GAPI)	150	ABHV	30	COMPENSATED DENSITY (pu)	-10
6	CALIPER (in)	16	10 (ft3)	0 30	COMPENSATED NEUTRON (pu)	-10
			TBHV		-0.25	CORRECTION (g/cc) 0.25
			0 (ft3)	10		



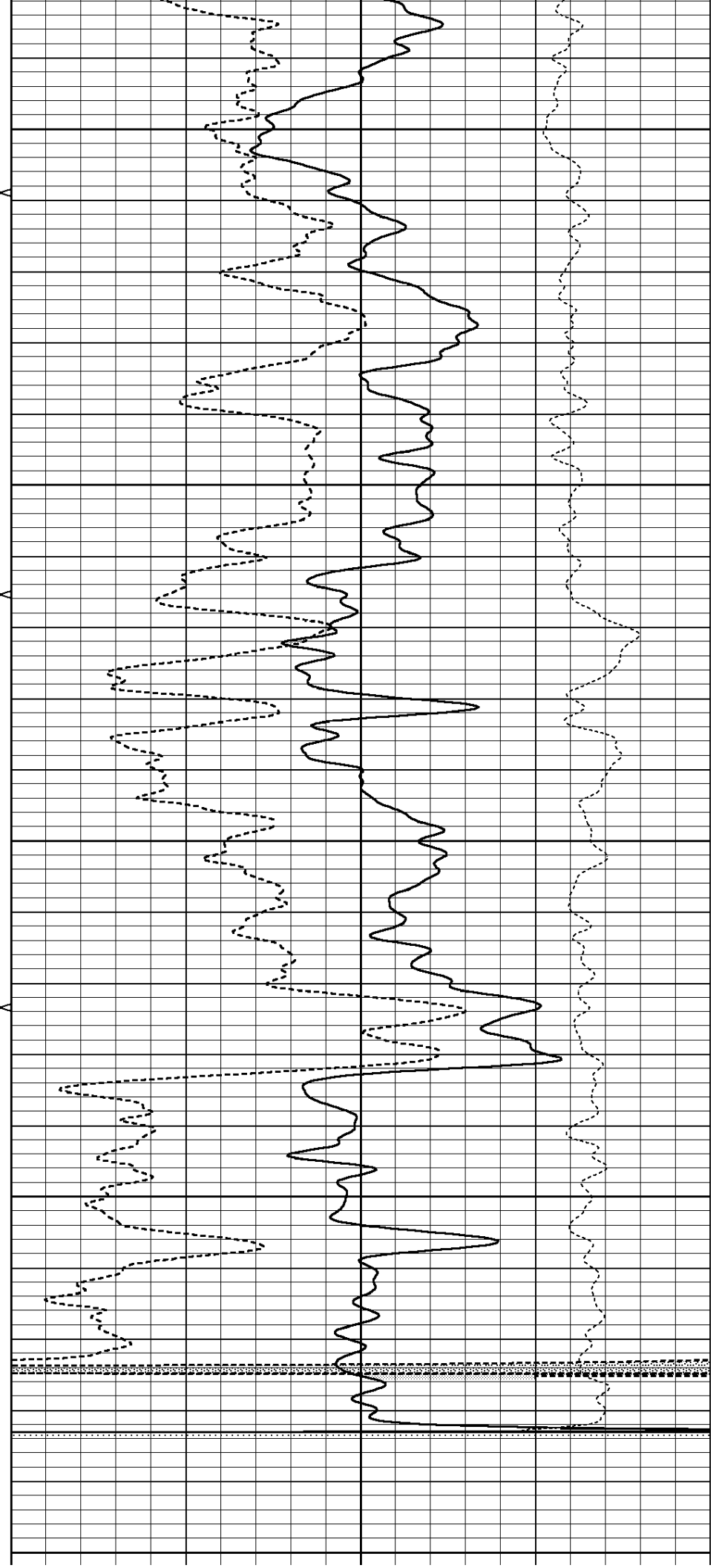
3000

3050

3100

3150

3200



0	GAMMA RAY (GAPI)	150	ABHV	30	COMPENSATED DENSITY (pu)				-10	
6	CALIPER (in)	16	10 (ft3) 0	30	COMPENSATED NEUTRON (pu)				-10	
			TBHV					-0.25	CORRECTION (g/cc)	0.25
			0 (ft3) 10							

Calibration Report

Database File: 008676ddn.db
 Dataset Pathname: pass3.2
 Dataset Creation: Wed Jan 18 12:57:07 2012 by Calc Open-Cased 090629

Dual Induction Calibration Report

Serial-Model: PROBE8-DILG
 Surface Cal Performed: Fri Aug 01 06:33:19 2008
 Downhole Cal Performed: Mon Jul 28 11:08:27 2008
 After Survey Verification Performed: Mon Jul 28 11:08:27 2008

Surface Calibration

Loop:	Readings				References		Results	
	Air	Loop			Air	Loop	m	b
Deep	0.015	0.648	V	0.000	400.000	mmho/m	632.616	-9.730
Medium	0.029	0.796	V	0.000	464.000	mmho/m	605.049	-17.680
Internal:	Zero	Cal		Zero	Cal		m	b
Deep	0.017	0.657	V	0.000	400.000	mmho/m	625.153	-10.619
Medium	0.016	0.757	V	0.000	464.000	mmho/m	625.992	-9.739

Downhole Calibration

	Readings				References		Results	
	Zero	Cal			Zero	Cal	m'	b'
Deep	0.000	0.000	mmho/m	2.011	405.777	mmho/m	1.000	0.000
Medium	0.000	0.000	mmho/m	7.590	503.393	mmho/m	1.000	0.000
LL3		7.500	V		1500.000	Ohm-m		
		0.000	V		20.000	Ohm-m		
		-7.200	V		3800.000	mmho-m		

After Survey Verification

	Readings				Targets		Results	
	Zero	Cal			Zero	Cal	m'	b'
Deep	0.000	0.000	mmho/m	0.000	0.000	mmho/m	0.000	0.000
Medium	0.000	0.000	mmho/m	0.000	0.000	mmho/m	0.000	0.000
LL3		1.000	Ohm-m		1.000	Ohm-m		
		0.000	Ohm-m		0.000	Ohm-m		
		1.000	mmho-m		1.000	mmho-m		

Litho Density Calibration Report
 Serial: 002 Model: PRB
 Performed Mon Oct 29 15:40:49 2007

Litho Density Calibration

	Background	Magnesium	Aluminum	Sandstone	
Window 1	1056.3	9118.0	2809.7	10378.4	cps
Window 2	969.9	7671.9	2431.6	8565.8	cps
Window 3	683.8	2939.8	1161.0	3161.8	cps
Window 4	231.4	231.6	226.7	230.8	cps
Long Spaced	0.0	0.0	1.0	0.0	cps

Long Space	0.0	0702.0	1401.7	7593.9	cps
Short Space	1.2	1433.6	959.4	1568.6	cps
Rho		1.7100	2.5900	1.3800	g/cc
Pe			2.5700	1.5500	

Rib Angle	: 45.2	Rib Slope	: 1.008	Density/Spine Ratio	: 0.559
Spine Angle	: 75.2	Spine Slope	: 3.791	Spine Intercept	: -18.7

Caliper

	Readings	Reference	
Low Ref	3.7	8.0	
High Ref	6.1	14.0	
	Gain: 2.5		Offset: -1.3

Compensated Neutron Calibration Report

Serial Number: 6I
Tool Model: G

CALIBRATION

Detector	Readings	Target	Normalization
Short Space	1.00 cps	1.00 cps	1.0000
Long Space	1.00 cps	1.00 cps	1.0000

Gamma Ray Calibration Report

Serial Number:	#8
Tool Model:	OPEN
Performed:	Mon Jun 13 16:56:43 2011
Calibrator Value:	150.0 GAPI
Background Reading:	0.0 cps
Calibrator Reading:	175.0 cps
Sensitivity:	0.8371 GAPI/cps