



SUPERIOR
Hays,
Kansas

MICRO
LOG

Company EAGLE CREEK CORPORATION
Well WEDMAN UNIT #1-6
Field
County BUTLER
State KANSAS

Company EAGLE CREEK CORPORATION
Well WEDMAN UNIT #1-6
Field
County BUTLER State KANSAS

Location: 2300' FNL & 7700' FEL
API # : 15-015-23933-0000
SEC 6 TWP 28S RGE 8E
Permanent Datum GROUND LEVEL Elevation 1547
Log Measured From KELLY BUSHING 9' A.G.L.
Drilling Measured From KELLY BUSHING
Other Services CDL/CNL DIL
Elevation K.B. 1556 D.F. 1554 G.L. 1547

Date	1/18/12
Run Number	TWO
Depth Driller	3200
Depth Logger	3199
Bottom Logged Interval	3197
Top Log Interval	2000
Casing Driller	8 5/8" @ 221
Casing Logger	220
Bit Size	7 7/8
Type Fluid in Hole	CHEMICAL MUD
Density / Viscosity	9.3/35
pH / Fluid Loss	9.4/9.0
Source of Sample	FLOWLINE
Rim @ Meas. Temp	3.00 @ 46F
Rmf @ Meas. Temp	2.25 @ 46F
Rmc @ Meas. Temp	3.60 @ 46F
Source of Rmf / Rmc	MEASURED
Rim @ BHT	1.27 @ 109F
Time Circulation Stopped	12 HOURS
Time Logger on Bottom	
Maximum Recorded Temperature	109F
Equipment Number	680
Location	HAYS, KS.
Recorded By	JEFF GRONEMEG
Witnessed By	DAVE CALLEWAERT

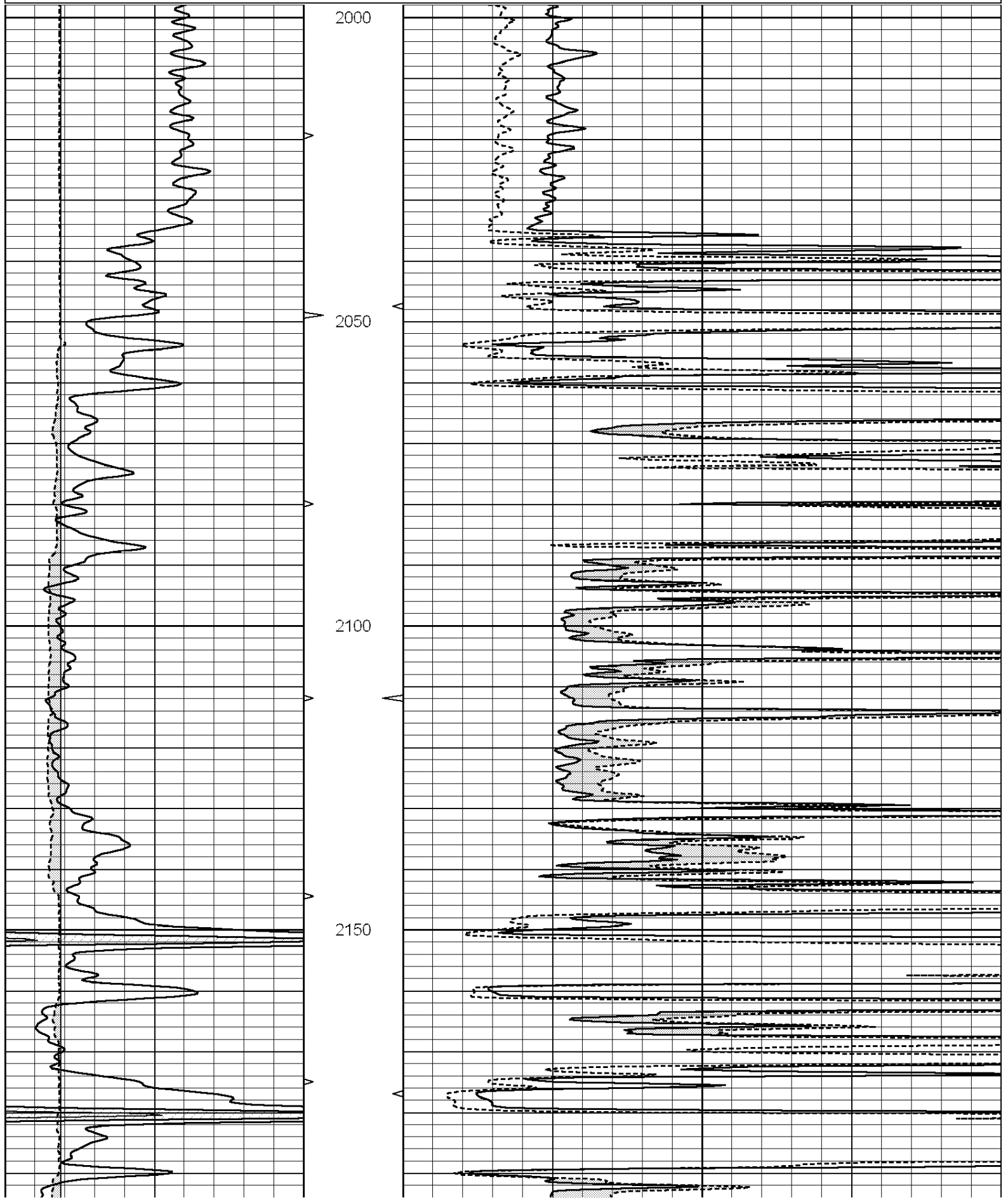
<<< Fold Here >>>

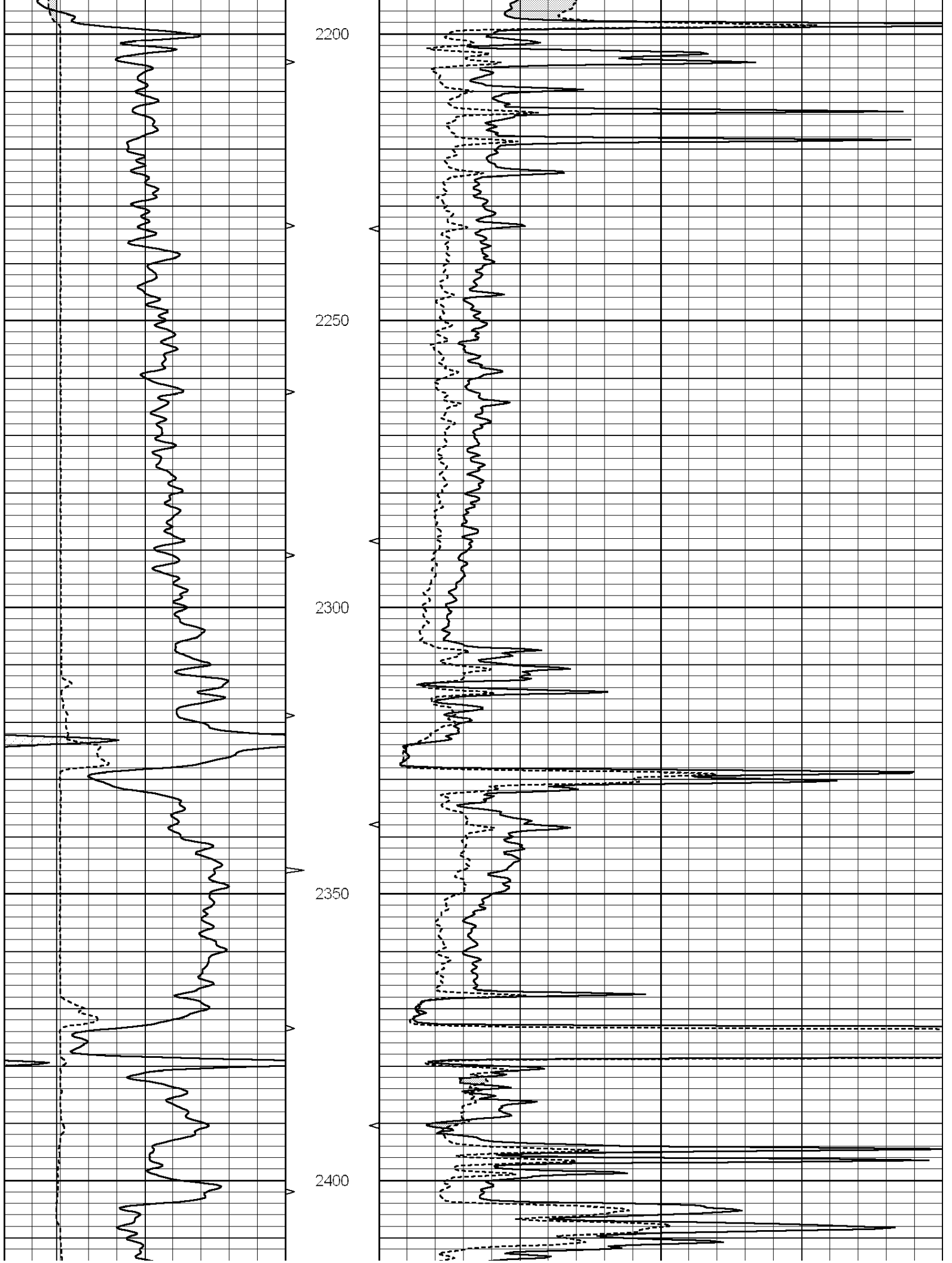
All interpretations are opinions based on inferences from electrical or other measurements and we cannot and do not guarantee the accuracy or correctness of any interpretation, and we shall not, except in the case of gross or willful negligence on our part, be liable or responsible for any loss, costs, damages, or expenses incurred or sustained by anyone resulting from any interpretation made by any of our officers, agents or employees. These interpretations are also subject to our general terms and conditions set out in our current Price Schedule.

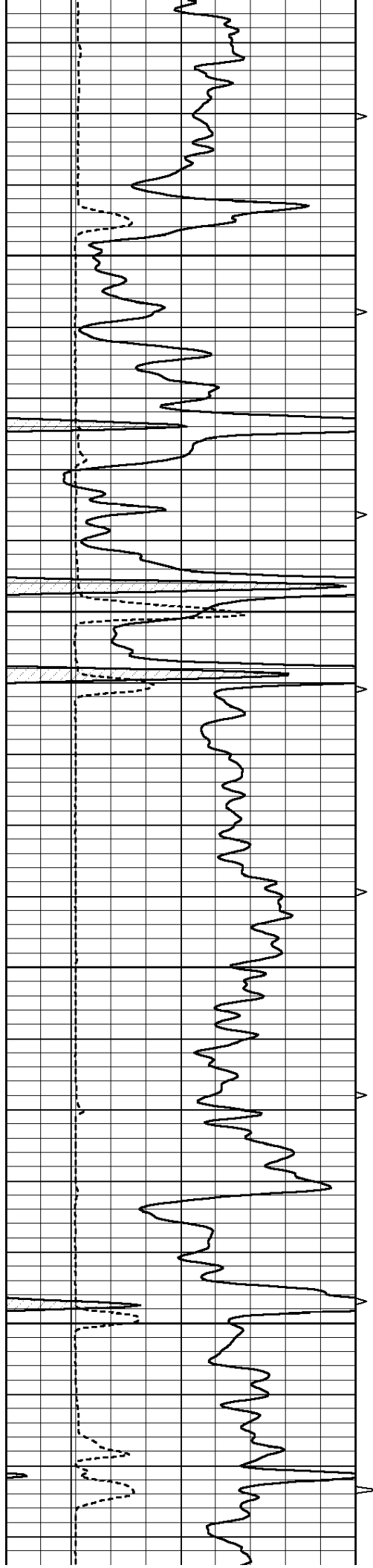
Comments

THANK YOU FOR USING SUPERIOR WELL SERVICE (785) 628-6395
DIRECTIONS
LEON, KS - 12 MILES EAST TO TALLGRASS RD - 1 MILE SOUTH TO RED GATE
1/2 MILE WEST - 1 MILE SOUTH INTO THROUGH PASTURE

0	GAMMA RAY (GAPI)	150	ABHV	0	MEL1.5 (Ohm-m)	40
6	CALIPER (in)	16	10 (ft3)	0 0	MEL2.0 (Ohm-m)	40
			TBHV			
			0 (ft3)			





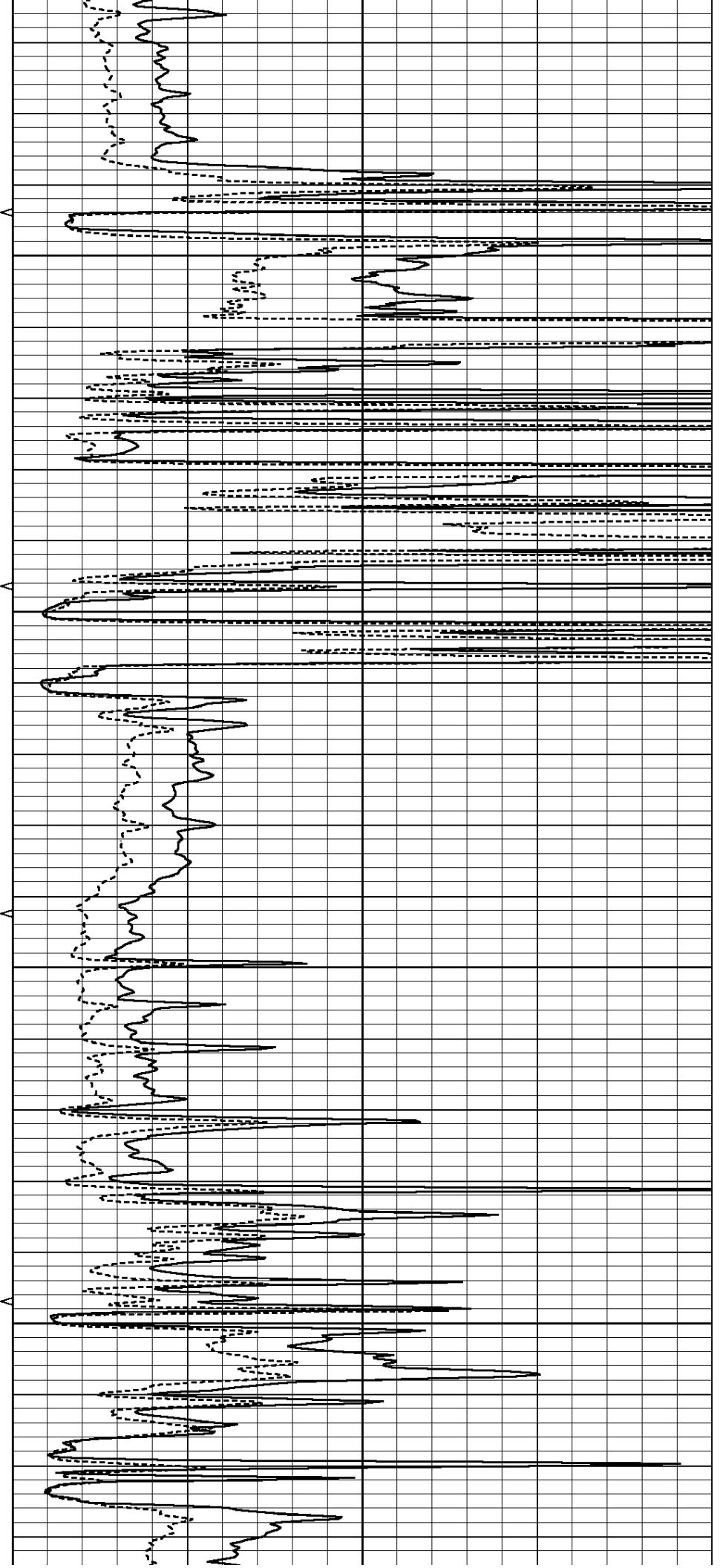


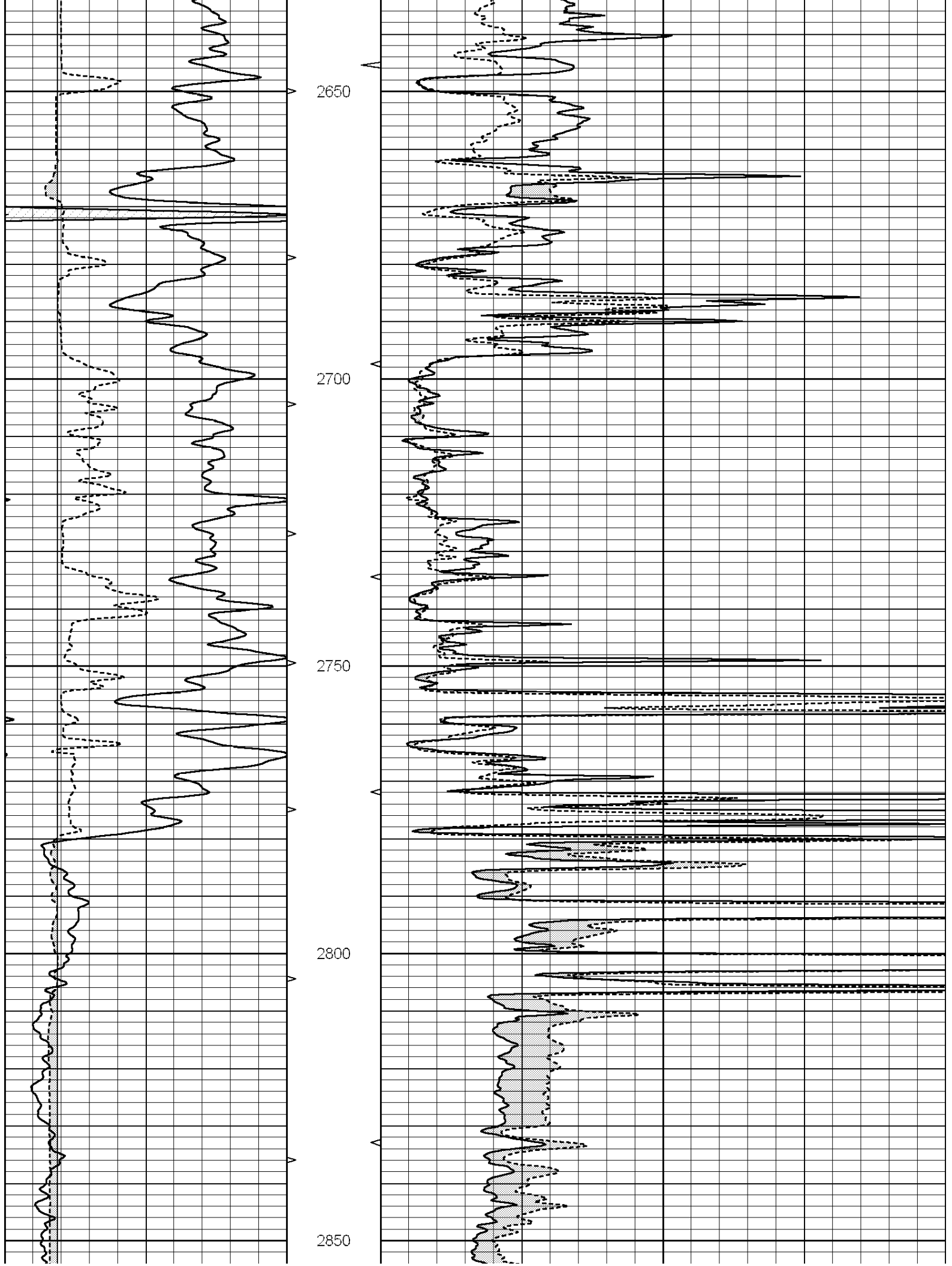
2450

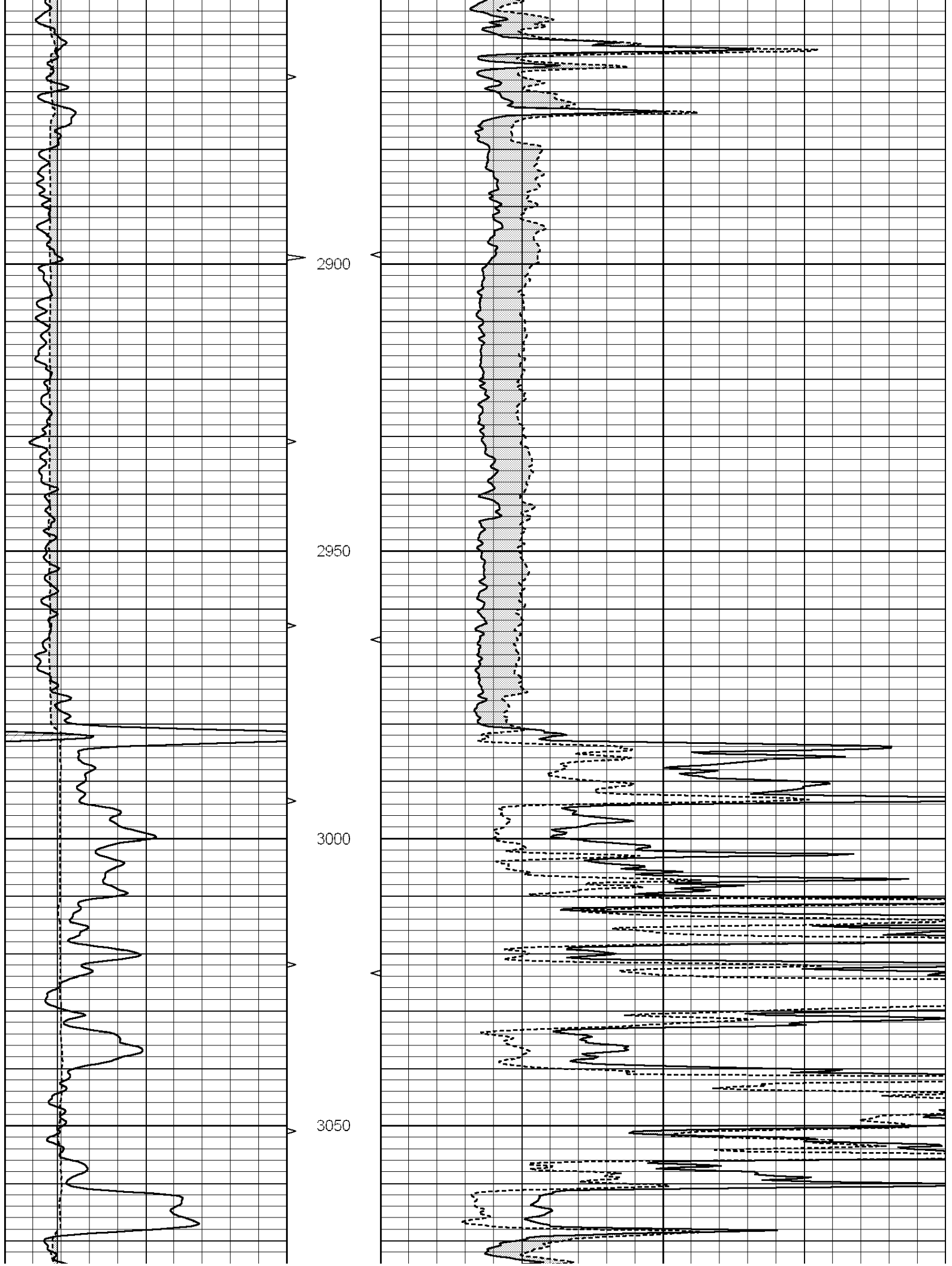
2500

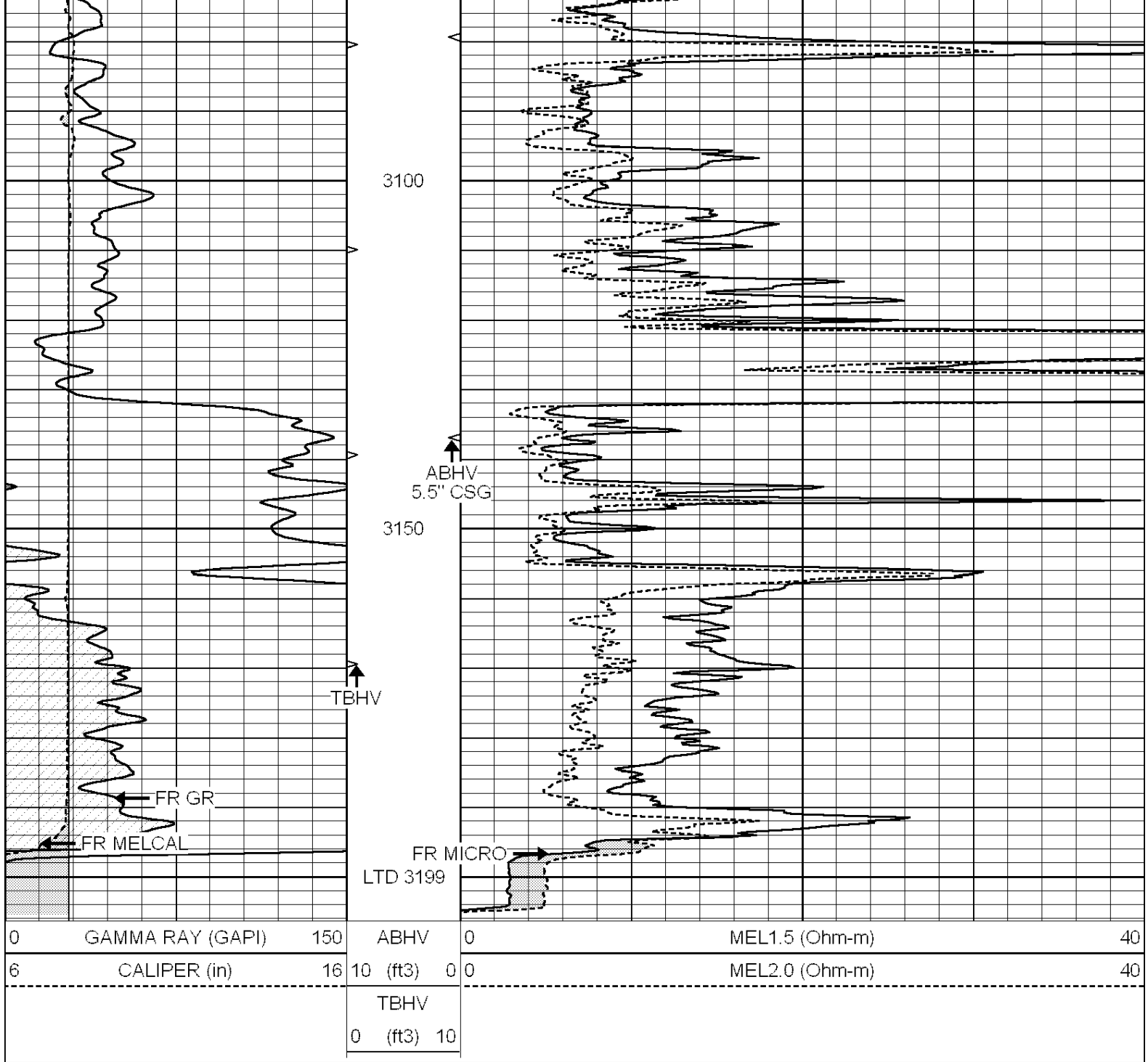
2550

2600







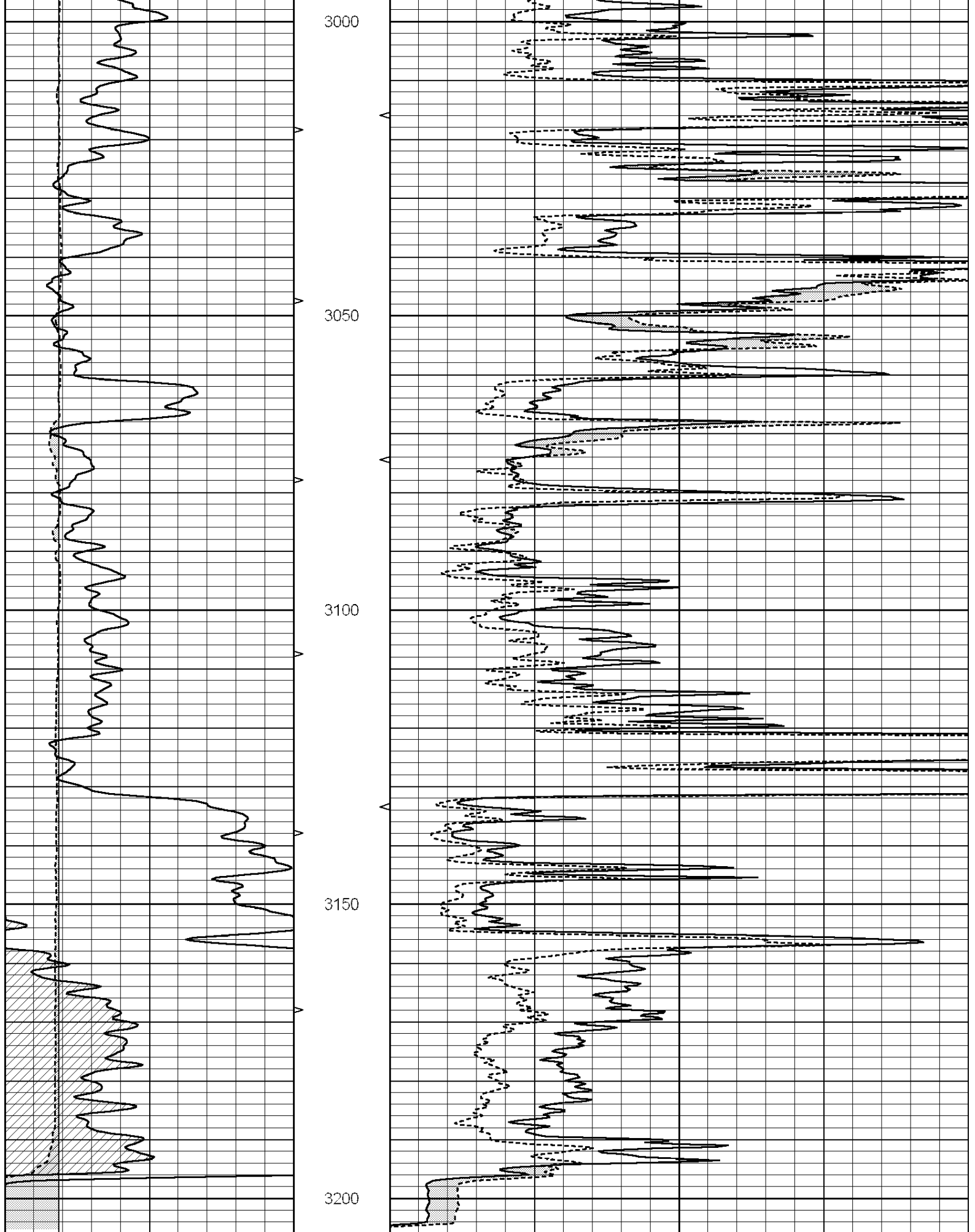


SUPERIOR WELL SERVICES
SUPERIOR
Hays, Kansas

REPEAT SECTION

Database File: 008676ddn.db
 Dataset Pathname: pass4.1
 Presentation Format: _micro
 Dataset Creation: Wed Jan 18 14:47:42 2012 by Calc Open-Cased 090629
 Charted by: Depth in Feet scaled 1:240

0	GAMMA RAY (GAPI)	150	ABHV	0	MEL1.5 (Ohm-m)	40
6	CALIPER (in)	16	10 (ft3)	0 0	MEL2.0 (Ohm-m)	40
			TBHV			
			0 (ft3)	10		



0	GAMMA RAY (GAPI)	150	ABHV	0	MEL1.5 (Ohm-m)	40
6	CALIPER (in)	16	10 (ft3)	0	MEL2.0 (Ohm-m)	40

Calibration Report

Database File: 008676ddn.db
 Dataset Pathname: pass5.1
 Dataset Creation: Wed Jan 18 14:44:42 2012 by Calc Open-Cased 090629

MICRO Calibration Report

Serial Number: MICRO3
 Tool Model: PROBE
 Performed: Thu Nov 17 03:06:31 2011

Caliper Calibration:	Gain=3.916	Offset=-10.071
	Low Cal	High Cal
References	8.000	14.000
Readings	4.257	5.789

1.5" Calibration:	Gain=130.000	Offset=-0.700
	Low Cal	High Cal
References	0.000	20.000
Readings	0.004	0.228

2" Calibration:	Gain=145.553	Offset=-1.220
	Low Cal	High Cal
References	0.000	20.000
Readings	0.005	0.175

Gamma Ray Calibration Report

Serial Number: #8
 Tool Model: OPEN
 Performed: Mon Jun 13 16:56:43 2011

Calibrator Value:	150.0	GAPI
Background Reading:	0.0	cps
Calibrator Reading:	175.0	cps
Sensitivity:	0.8371	GAPI/cps