



**SUPERIOR**  
Hays,  
Kansas

**DUAL**  
INDUCTION  
LOG

Company EAGLE CREEK CORPORATION  
Well WEDMAN UNIT #1-6  
Field  
County BUTLER  
State KANSAS

Company EAGLE CREEK CORPORATION  
Well WEDMAN UNIT #1-6  
Field  
County BUTLER State KANSAS

Location: 2300' FNL & 7700' FEL  
API # : 15-015-23933-0000  
SEC 6 TWP 28S RGE 8E  
Permanent Datum GROUND LEVEL Elevation 1547  
Log Measured From KELLY BUSHING 9' A.G.L.  
Drilling Measured From KELLY BUSHING  
Other Services  
CDL/CNL  
MEL  
Elevation  
K.B. 1556  
D.F. 1554  
G.L. 1547

Date	1/18/12
Run Number	ONE
Depth Driller	3200
Depth Logger	3199
Bottom Logged Interval	3197
Top Log Interval	0
Casing Driller	8 5/8" @ 221
Casing Logger	220
Bit Size	7 7/8
Type Fluid in Hole	CHEMICAL MUD
Density / Viscosity	9.3/35
pH / Fluid Loss	9.4/9.0
Source of Sample	FLOWLINE
Rin @ Meas. Temp	3.00 @ 46F
Rmf @ Meas. Temp	2.25 @ 46F
Rmc @ Meas. Temp	3.60 @ 46F
Source of Rmf / Rmc	MEASURED
Rin @ BHT	1.27 @ 109F
Time Circulation Stopped	12 HOURS
Time Logger on Bottom	
Maximum Recorded Temperature	109F
Equipment Number	680
Location	HAYS, KS.
Recorded By	JEFF GRONEMEG
Witnessed By	DAVE CALLEWAERT

<<< Fold Here >>>

All interpretations are opinions based on inferences from electrical or other measurements and we cannot and do not guarantee the accuracy or correctness of any interpretation, and we shall not, except in the case of gross or willful negligence on our part, be liable or responsible for any loss, costs, damages, or expenses incurred or sustained by anyone resulting from any interpretation made by any of our officers, agents or employees. These interpretations are also subject to our general terms and conditions set out in our current Price Schedule.

**Comments**

THANK YOU FOR USING SUPERIOR WELL SERVICE (785) 628-6395  
DIRECTIONS  
LEON, KS - 12 MILES EAST TO TALLGRASS RD - 1 MILE SOUTH TO RED GATE  
1/2 MILE WEST - 1 MILE SOUTH INTO THROUGH PASTURE

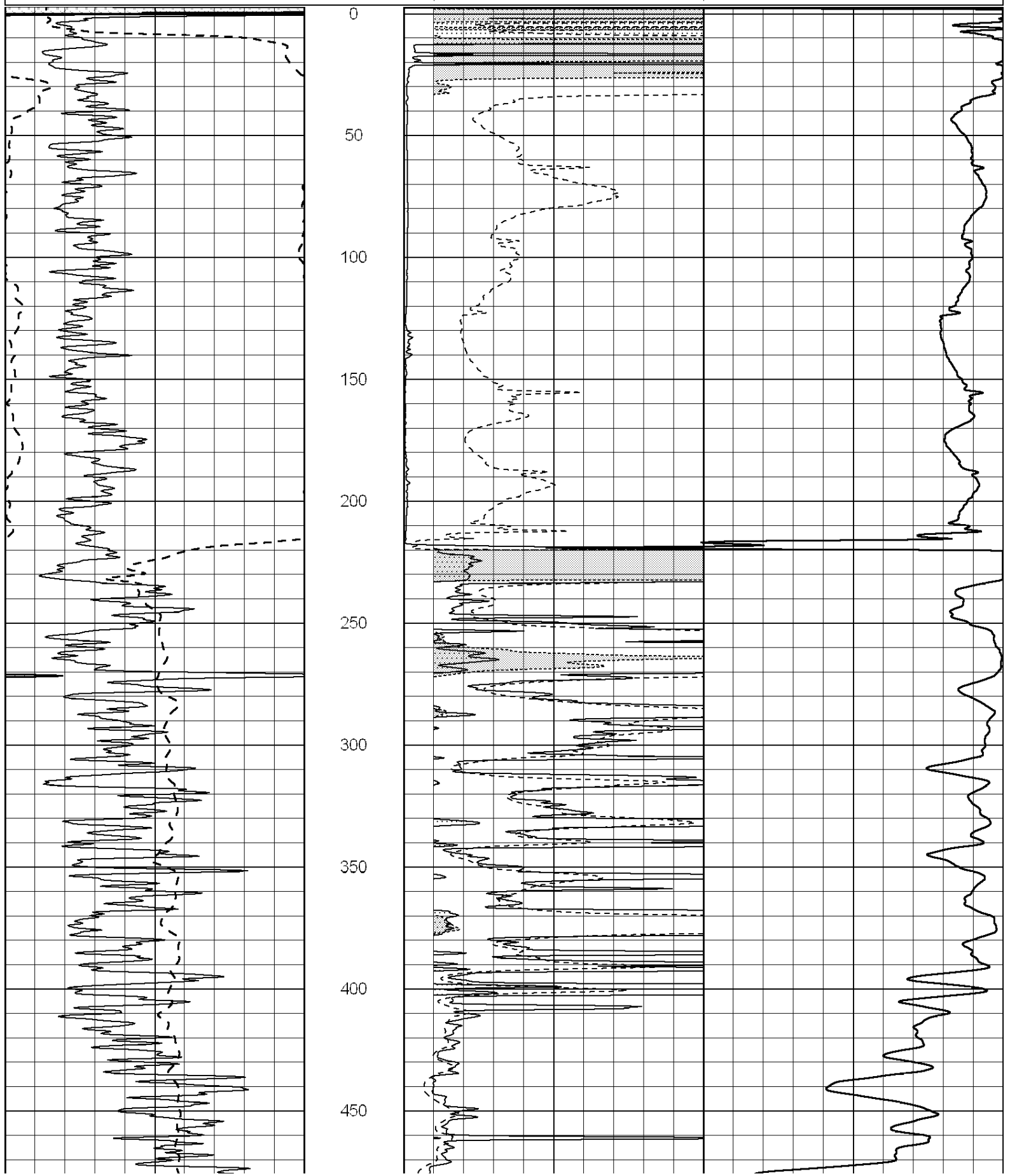
Database File: 008676ddn.db  
Dataset Pathname: pass3.3  
Presentation Format: \_dil2  
Dataset Creation: Wed Jan 18 14:12:03 2012 by Calc Open-Cased 090629  
Charted by: Depth in Feet scaled 1:600

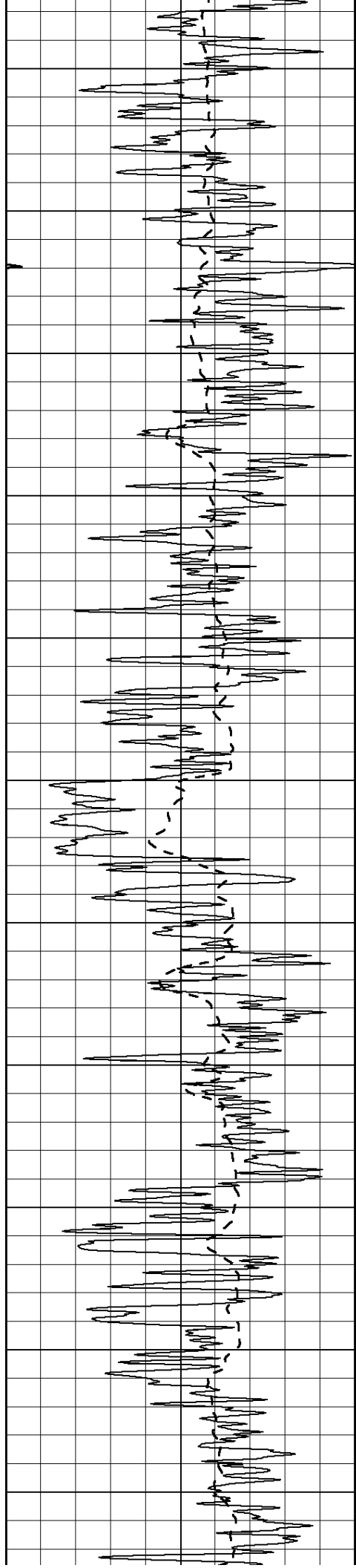
0	Gamma Ray (GAPI)	150
-100	SP (mV)	100

0	RLL3 (Ohm-m)	50
0	Deep Induction (Ohm-m)	50

1000	CILD (mmho/m)	0
------	---------------	---

50	RILD X10 (Ohm-m)	500
50	RLL3 X10 (Ohm-m)	500





500

550

600

650

700

750

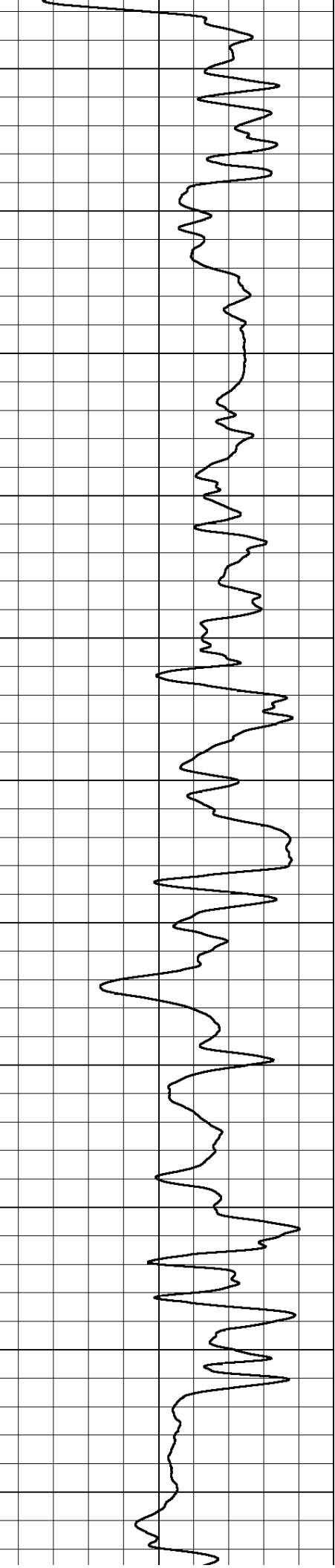
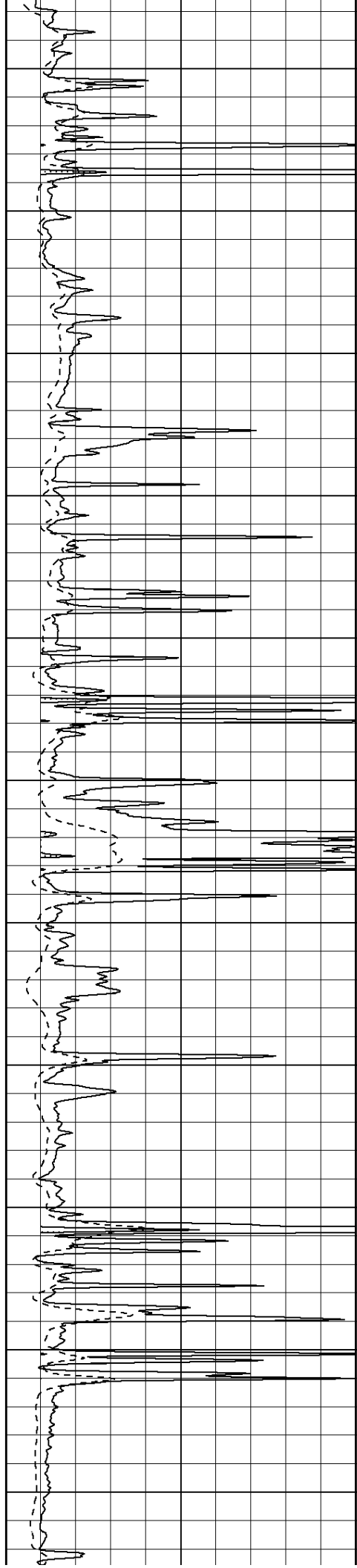
800

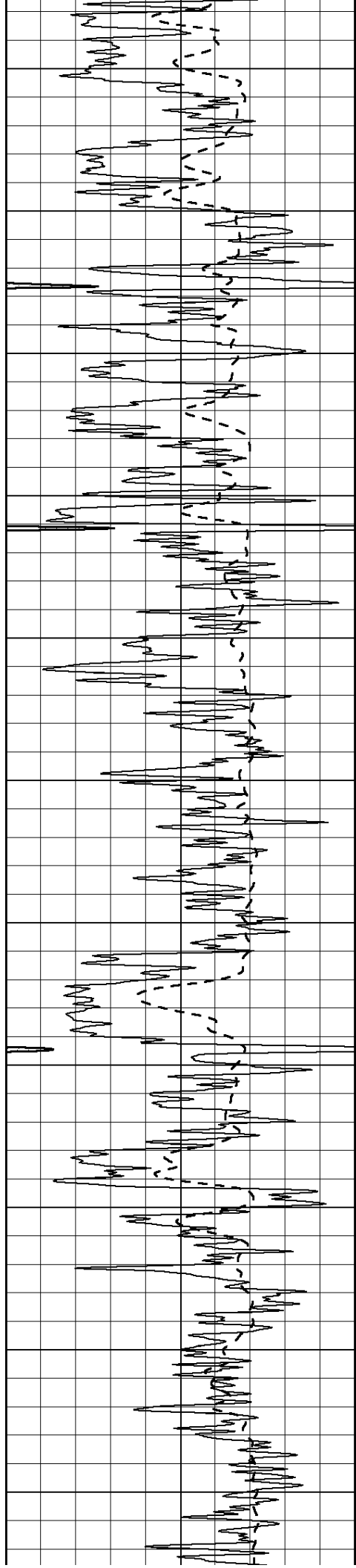
850

900

950

1000





1050

1100

1150

1200

1250

1300

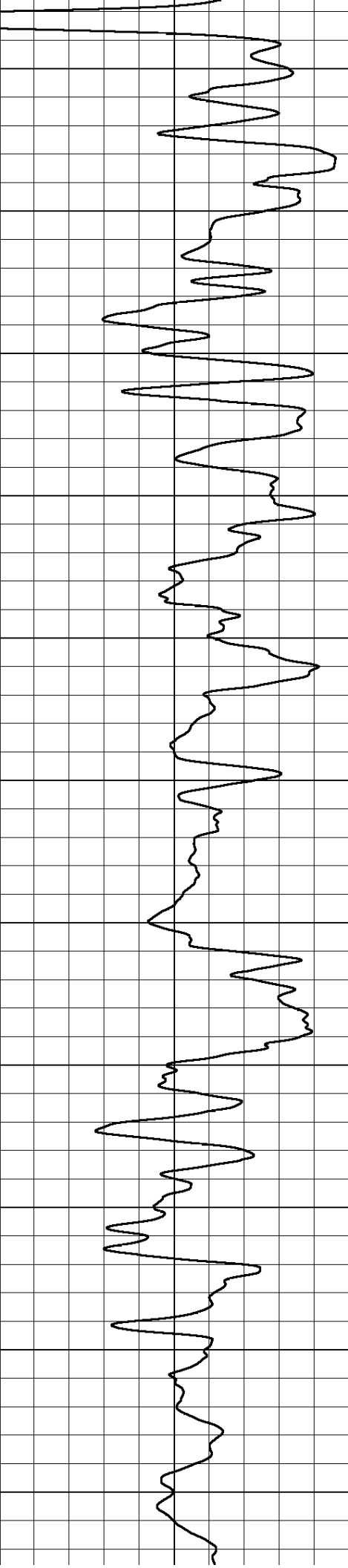
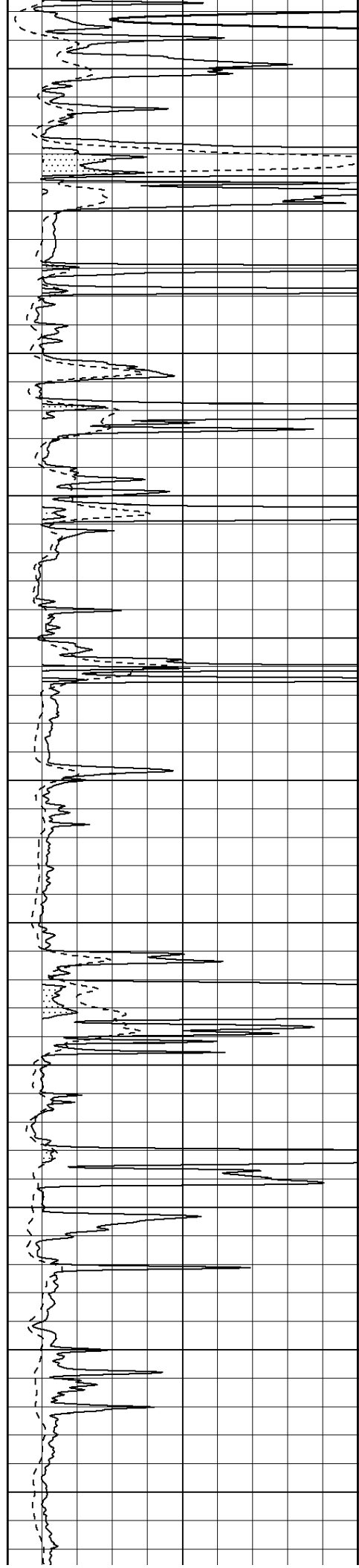
1350

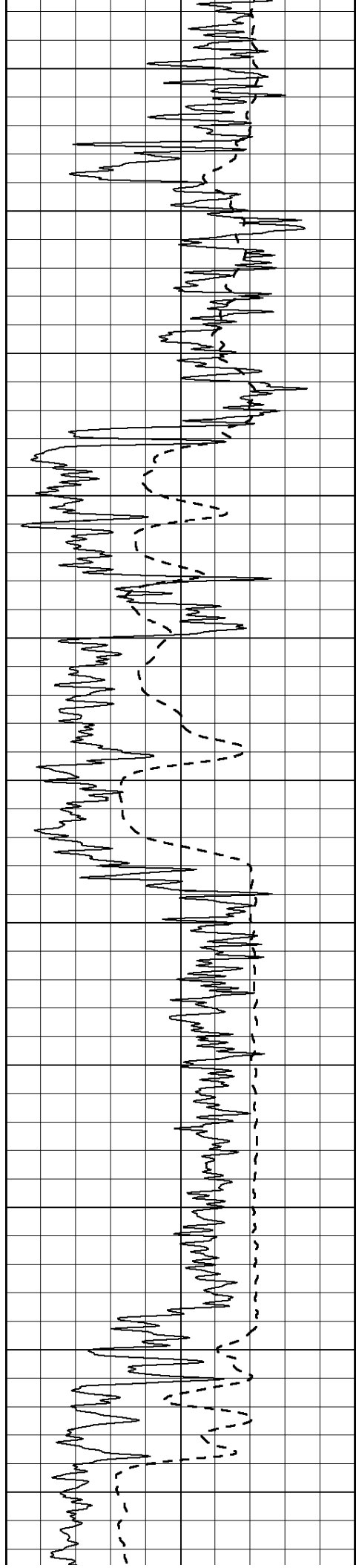
1400

1450

1500

1550





1600

1650

1700

1750

1800

1850

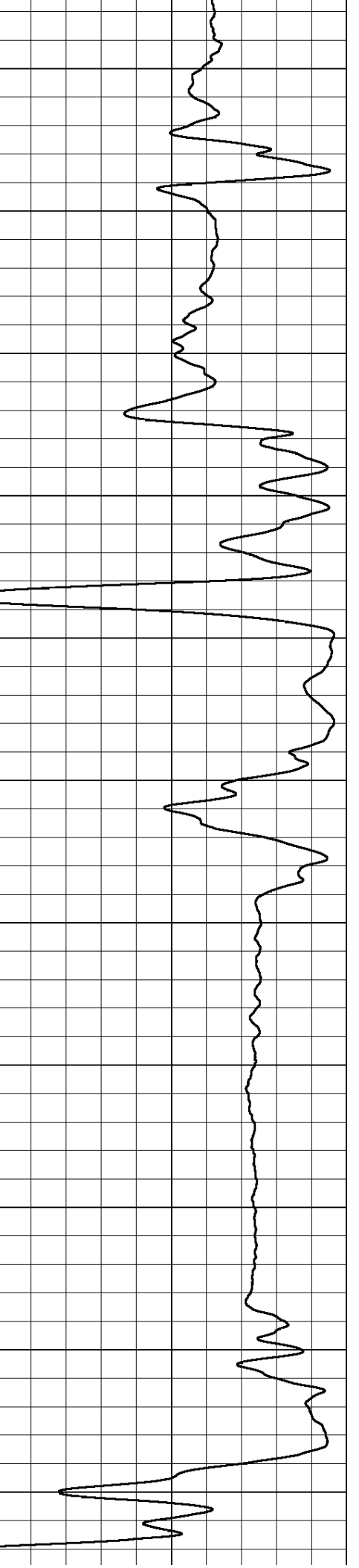
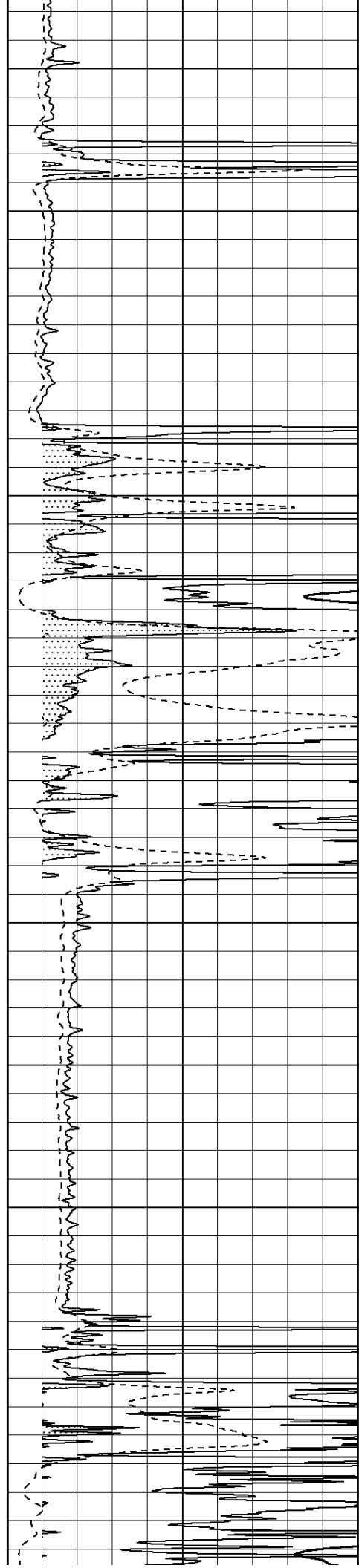
1900

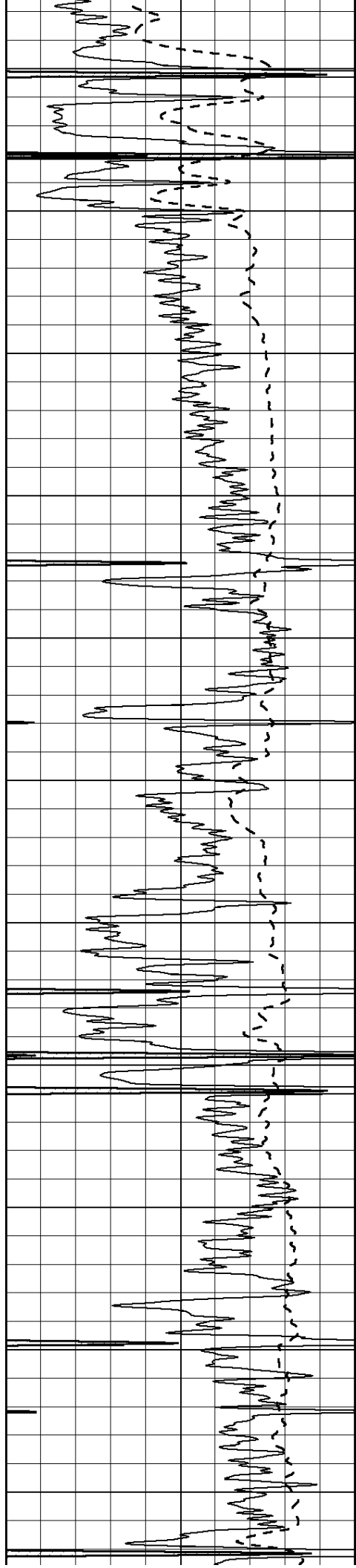
1950

2000

2050

2100





2150

2200

2250

2300

2350

2400

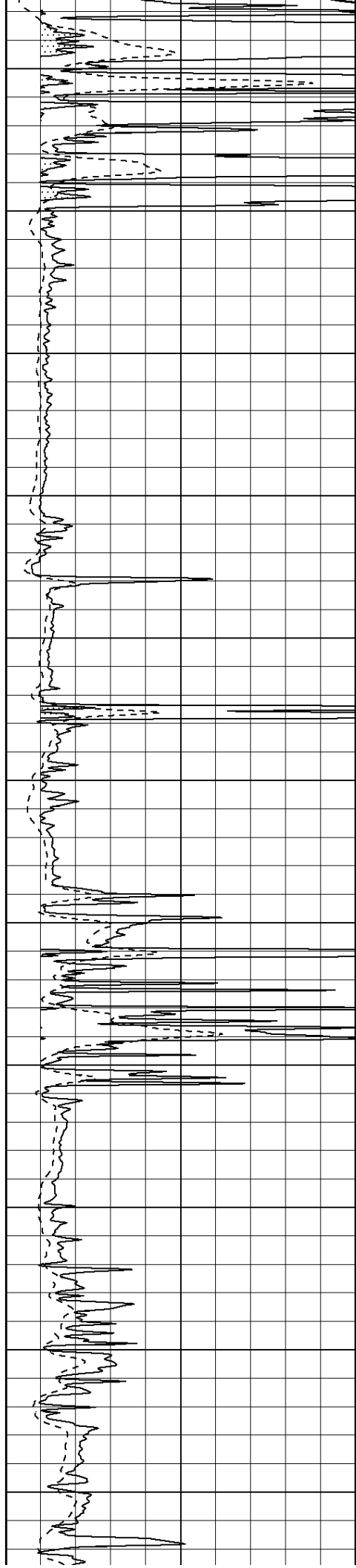
2450

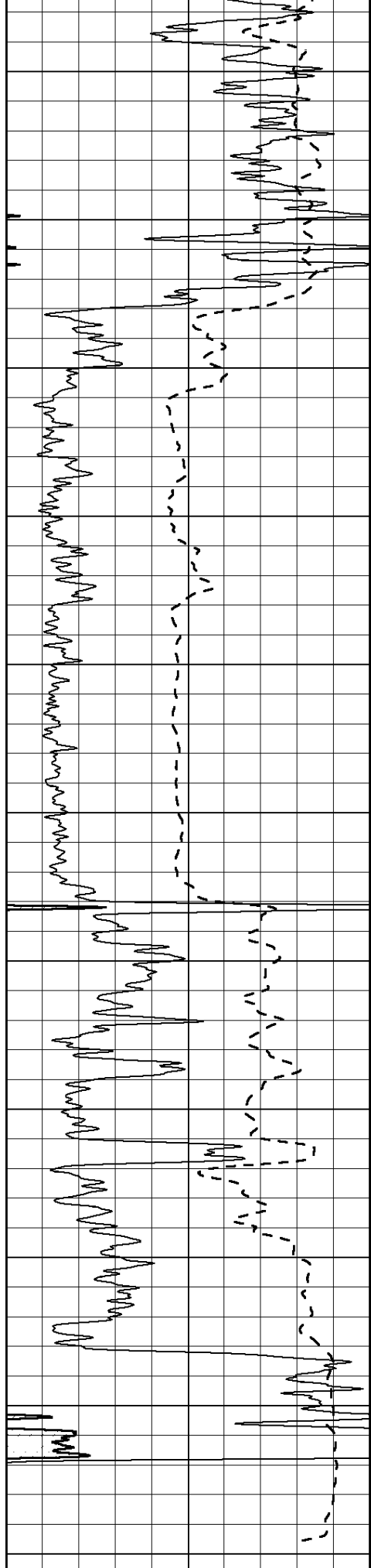
2500

2550

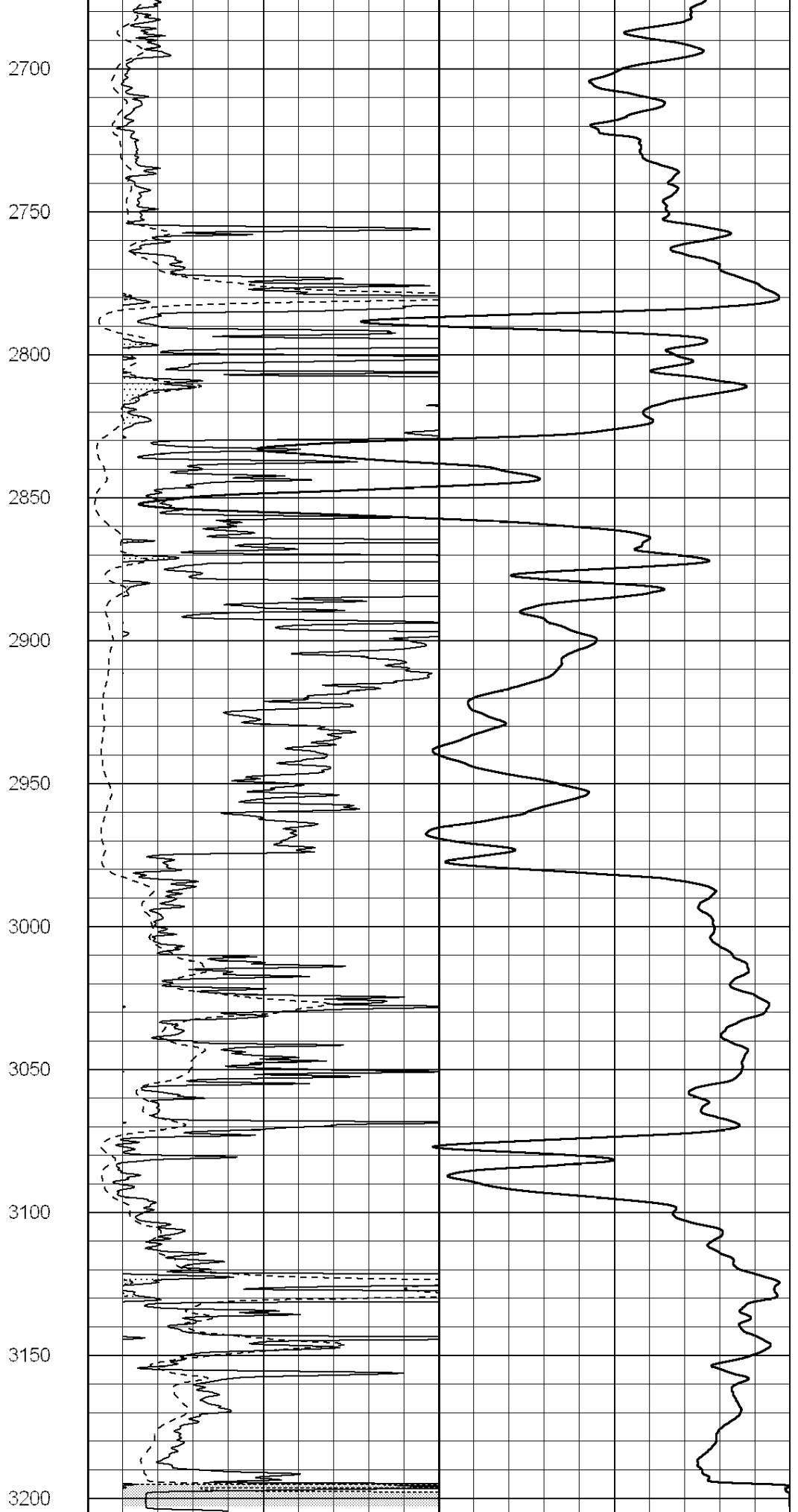
2600

2650





0 Gamma Ray (GAPI) 150  
-100 SP (mV) 100



0 RLL3 (Ohm-m) 50  
0 Deep Induction (Ohm-m) 50

1000

CILD (mmho/m)

0

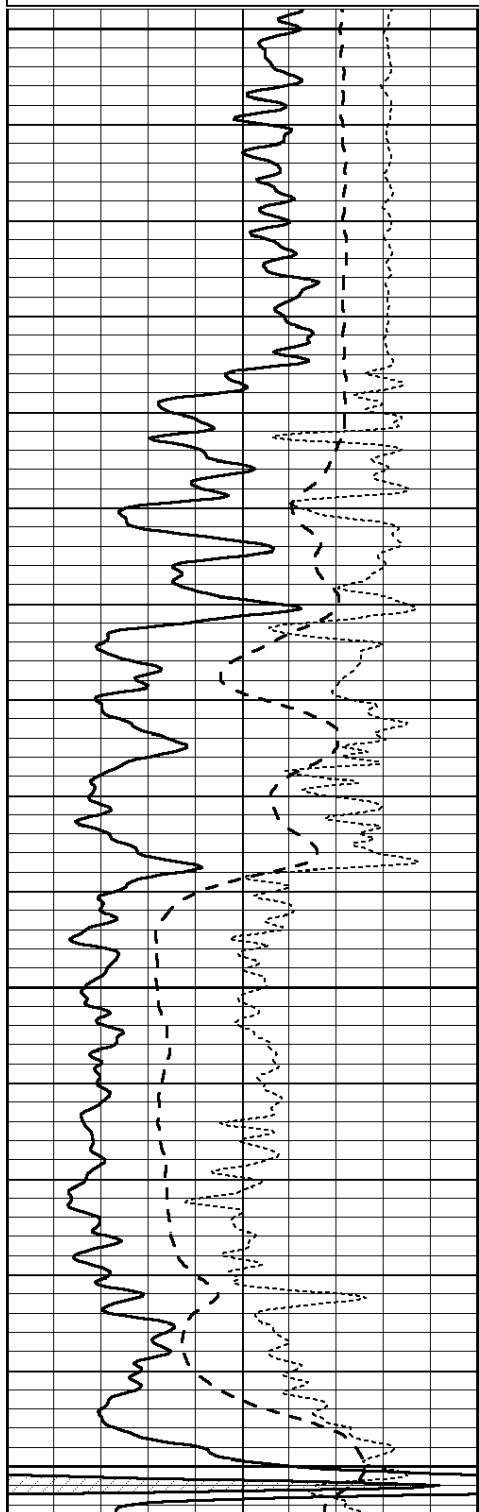
50 RILD X10 (Ohm-m) 500

50 RLL3 X10 (Ohm-m) 500

Database File: 008676ddn.db  
 Dataset Pathname: pass3.2  
 Presentation Format: \_dil  
 Dataset Creation: Wed Jan 18 12:57:07 2012 by Calc Open-Cased 090629  
 Charted by: Depth in Feet scaled 1:240

0	GAMMA RAY (GAPI)	150
-100	SP (mV)	100
-250	Rxo/Rt	50

0.2	SHALLOW GUARD (Ohm-m)	2000
0.2	MEDIUM INDUCTION (Ohm-m)	2000
0.2	DEEP INDUCTION (Ohm-m)	2000

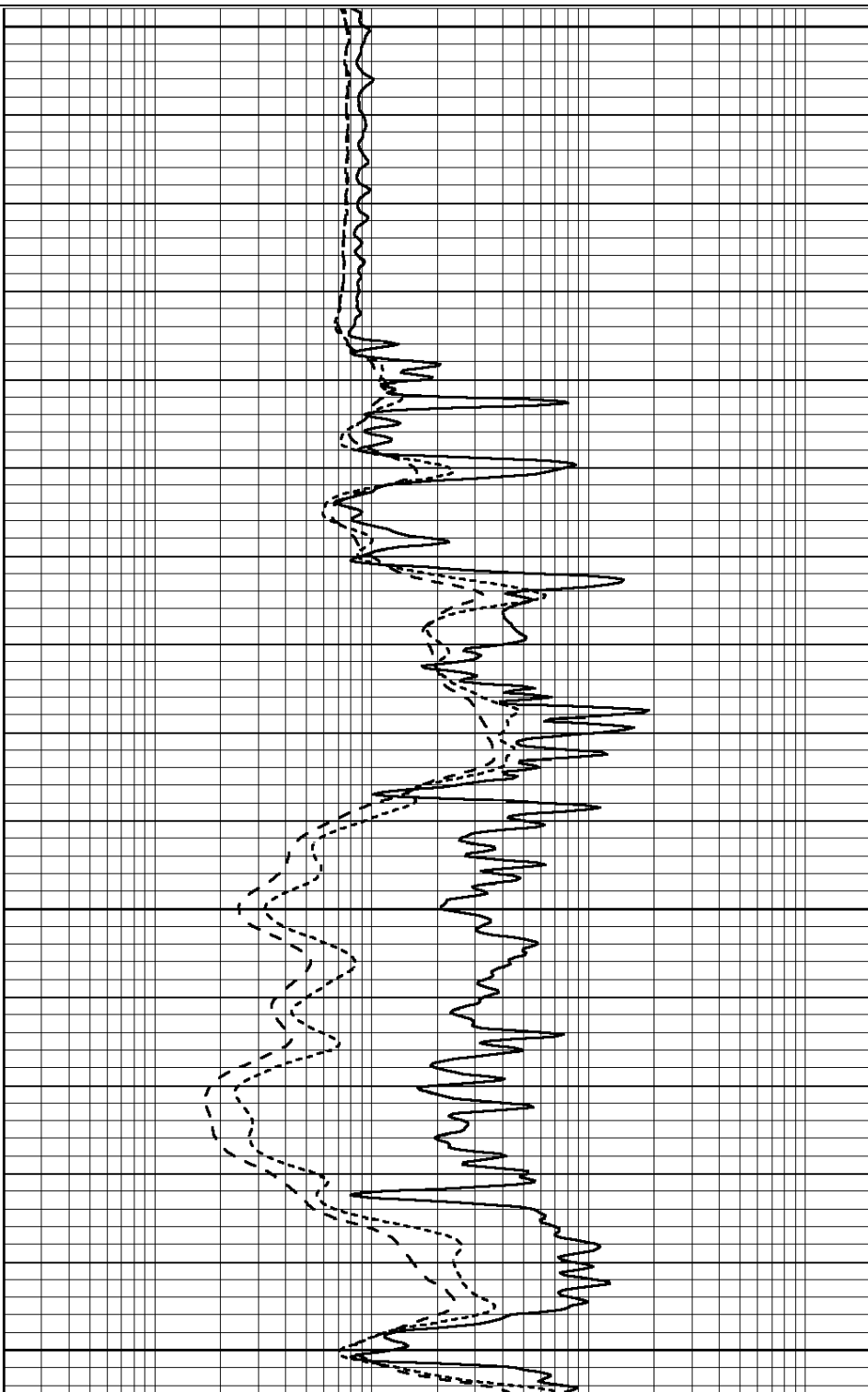


2000

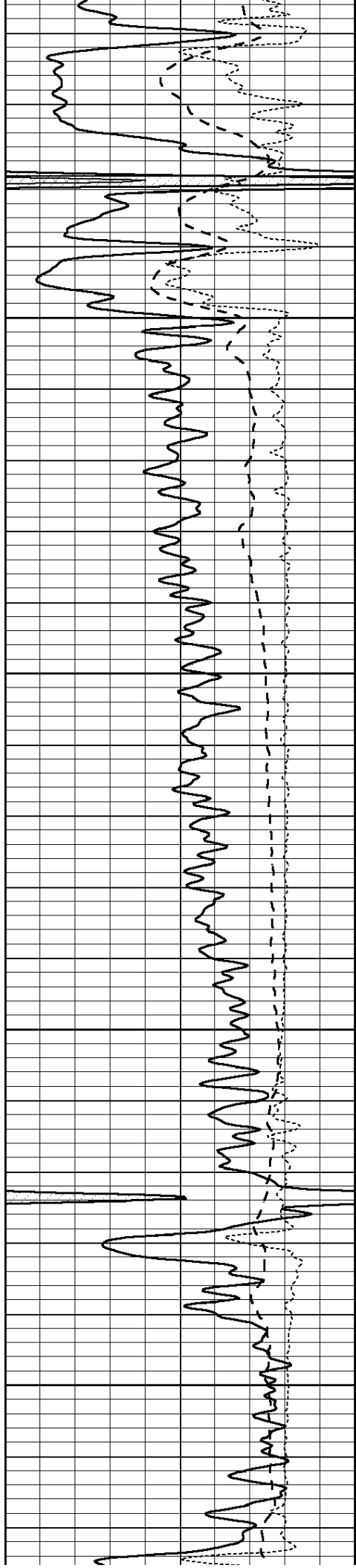
2050

2100

2150





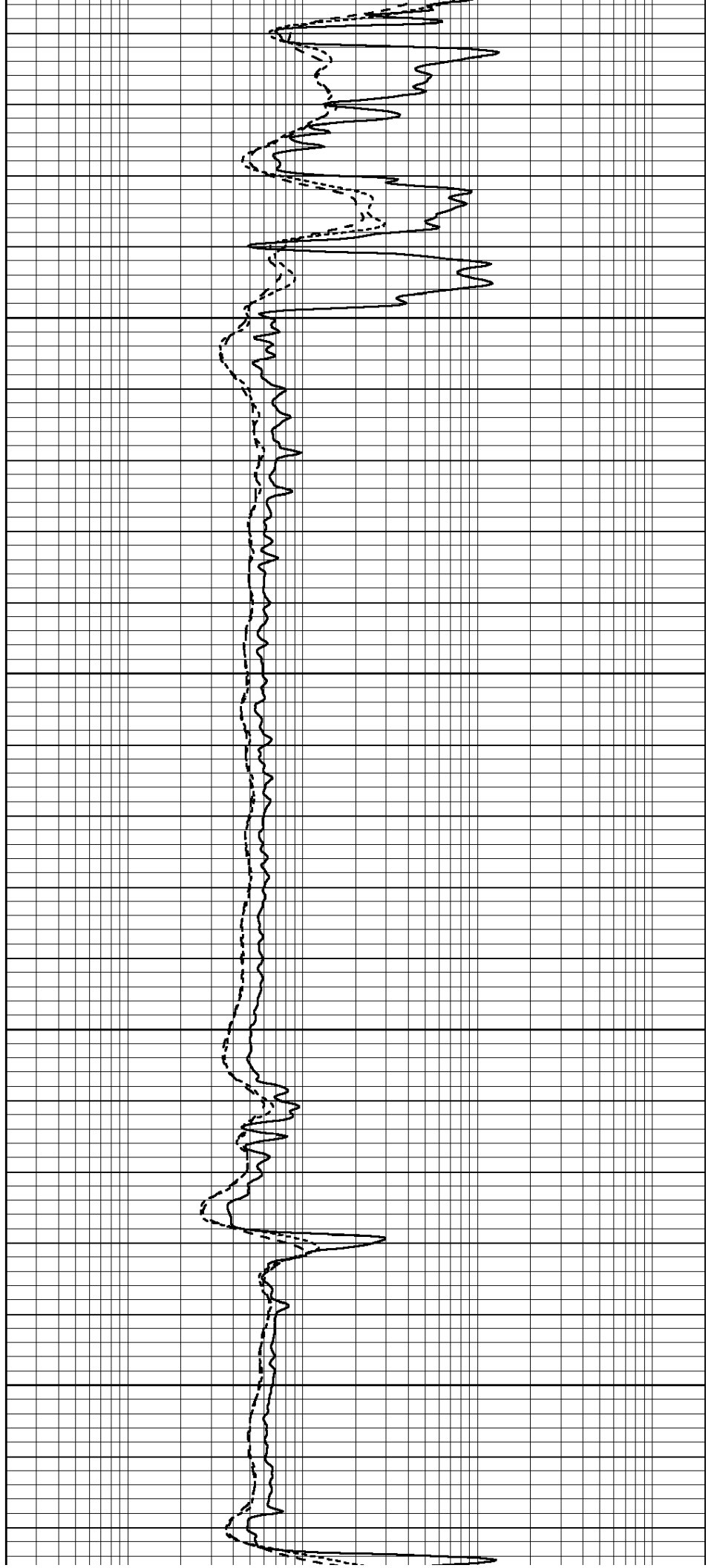


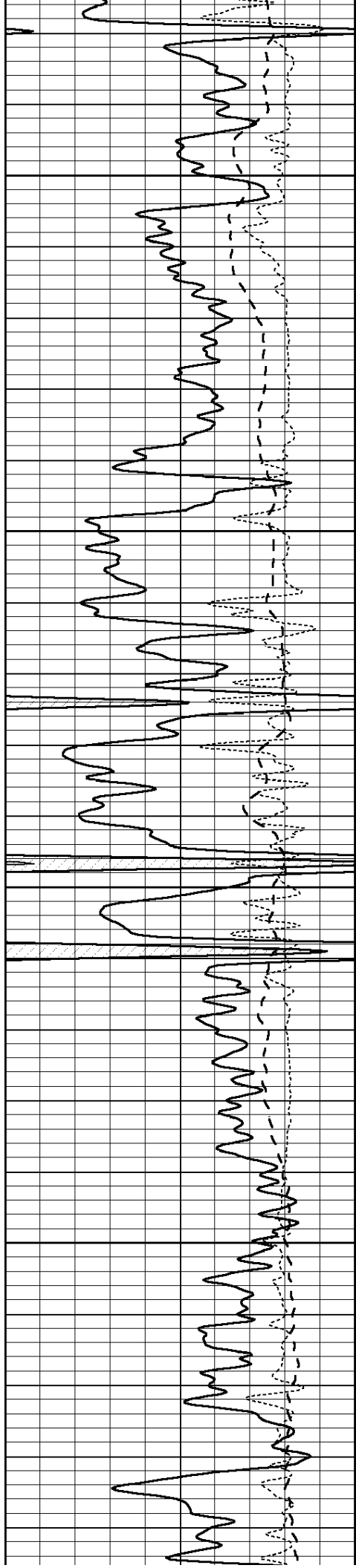
2200

2250

2300

2350



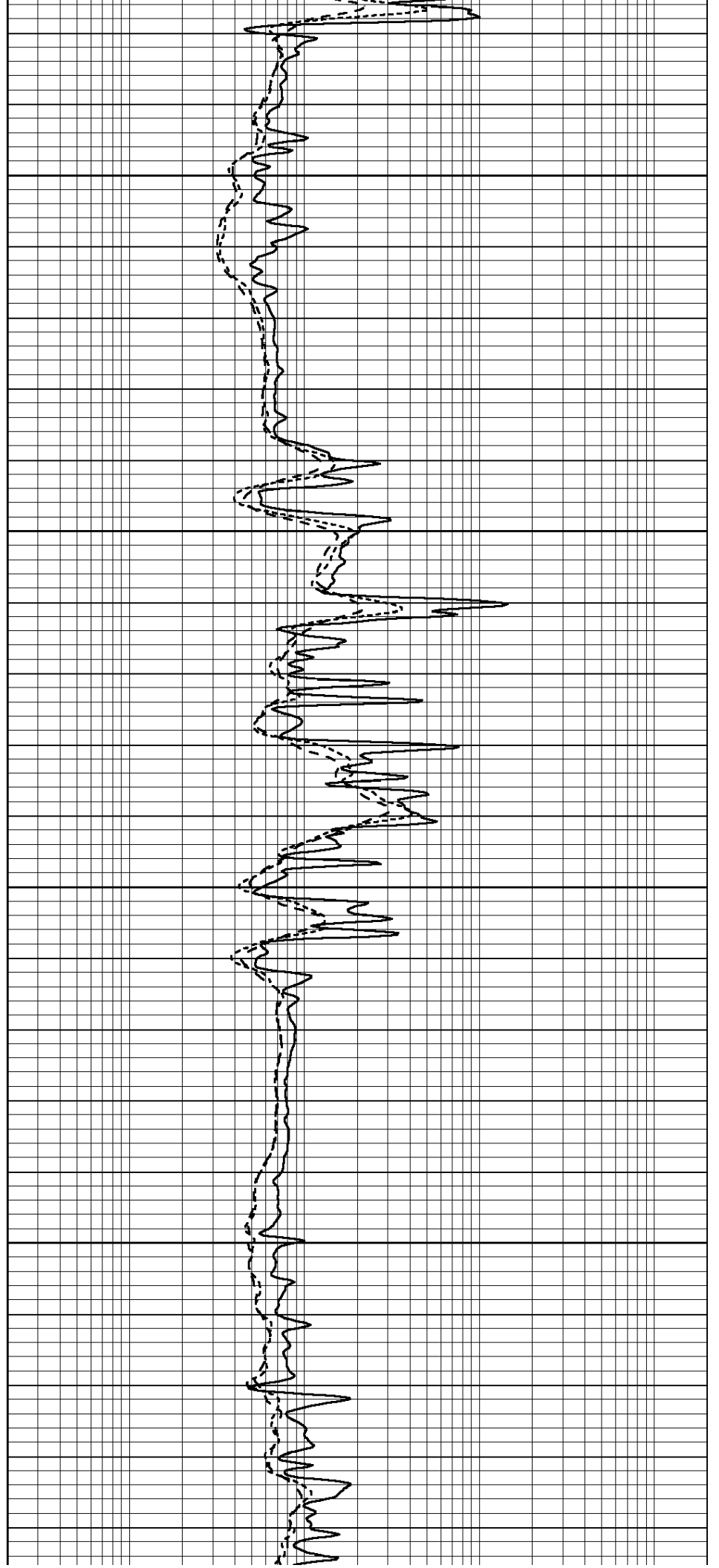


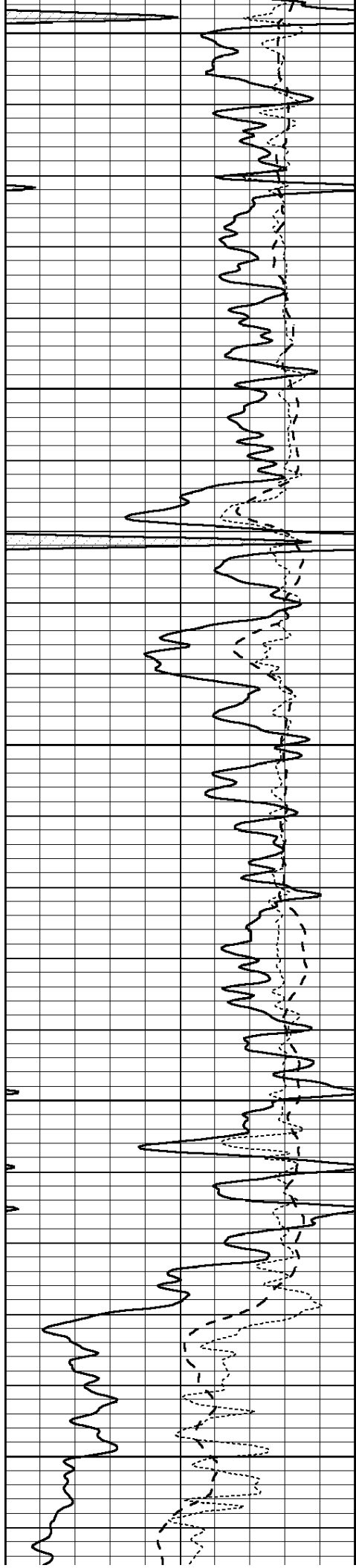
2400

2450

2500

2550





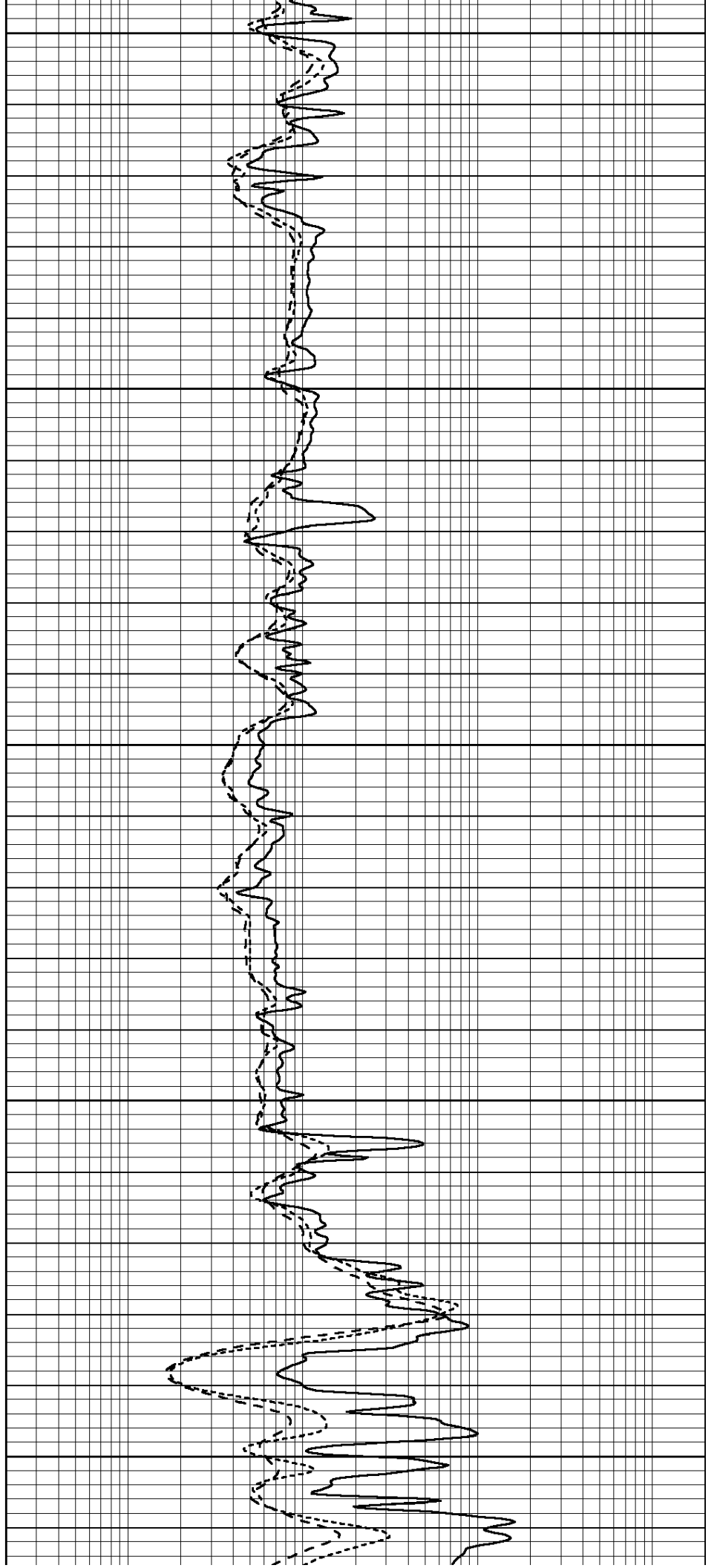
2600

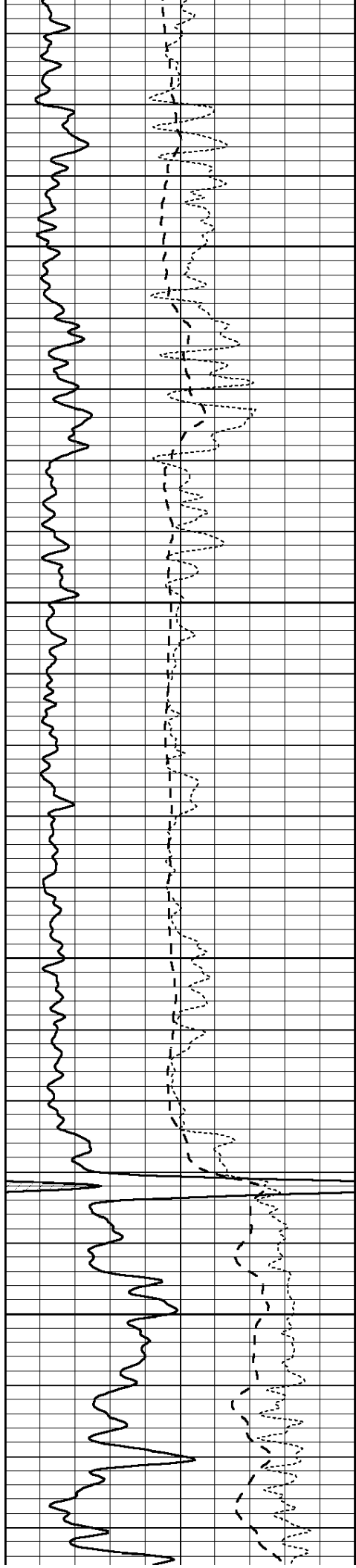
2650

2700

2750

2800



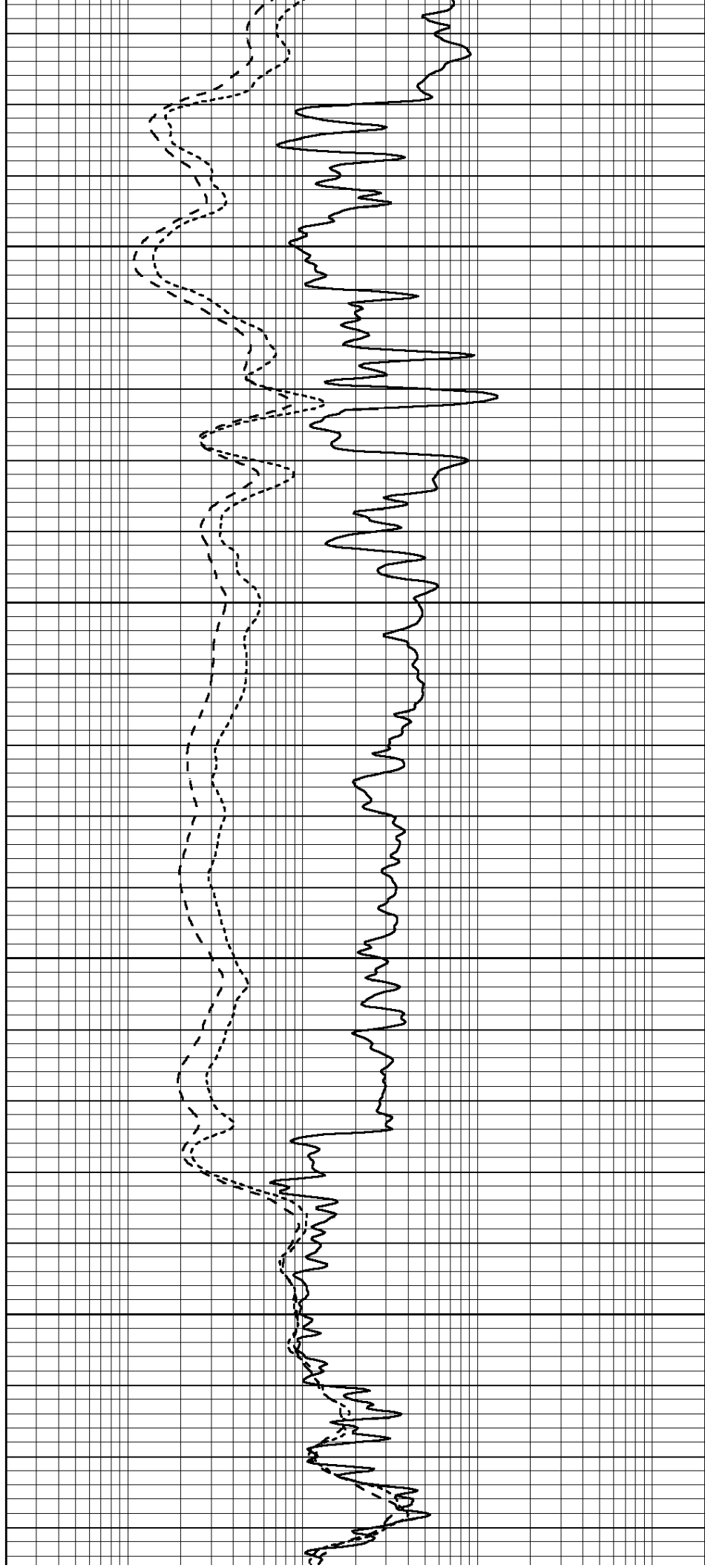


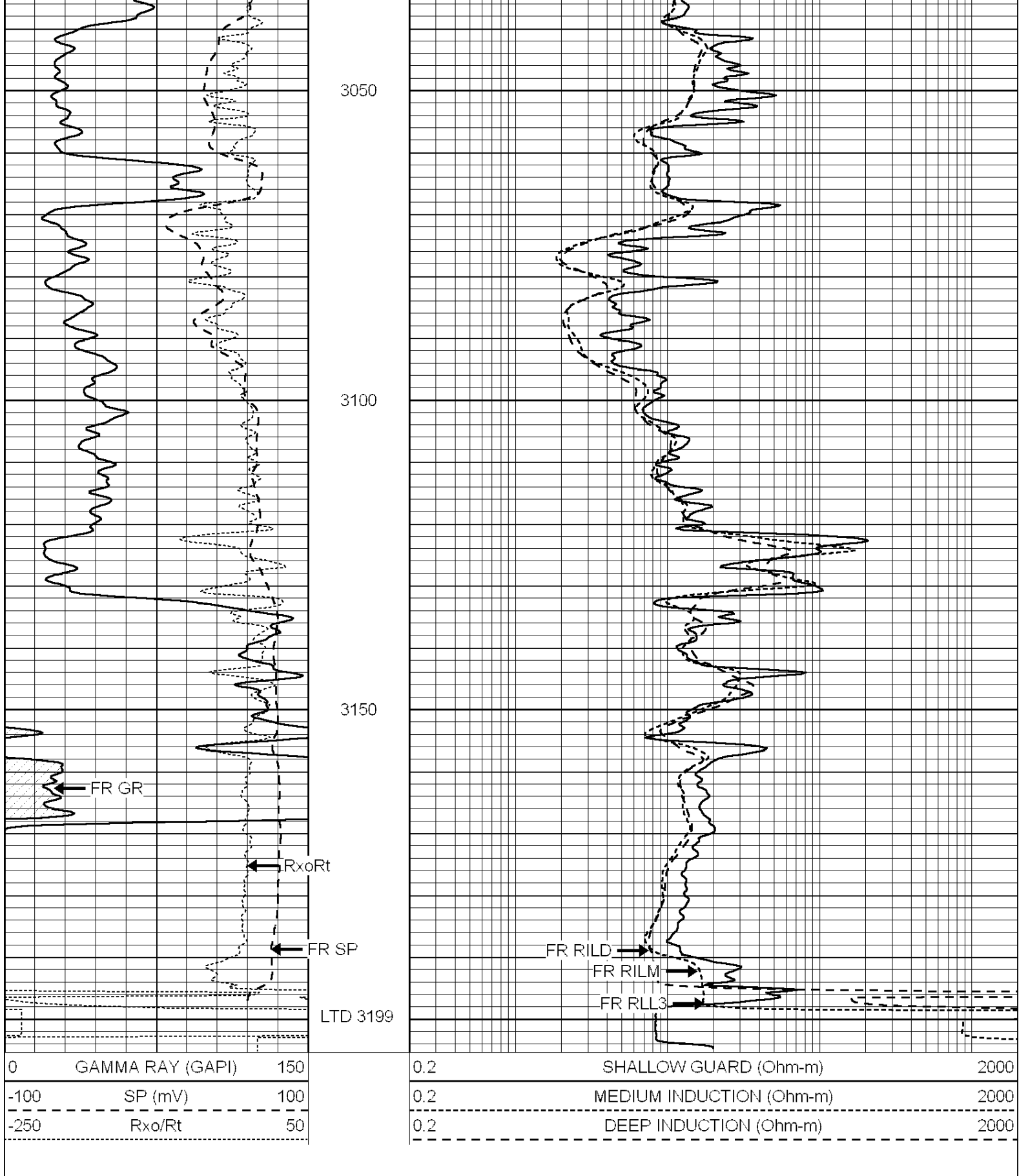
2850

2900

2950

3000





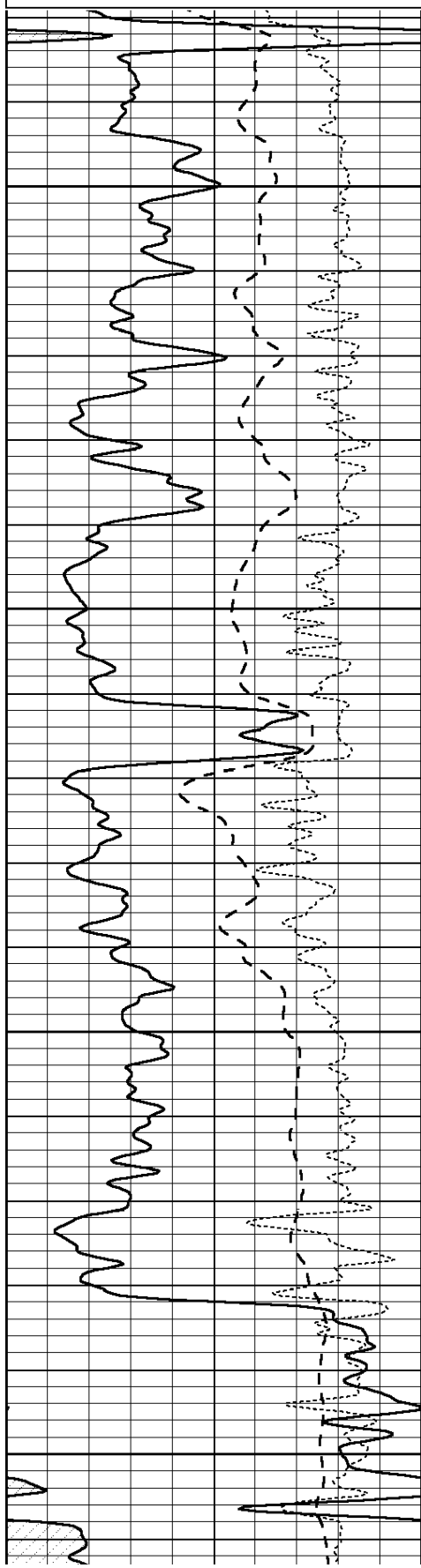
SUPERIOR  
Hays,  
Kansas

# REPEAT SECTION

Dataset Pathname: pass2.2  
 Presentation Format: \_dil  
 Dataset Creation: Wed Jan 18 12:17:22 2012 by Calc Open-Cased 090629  
 Charted by: Depth in Feet scaled 1:240

0	GAMMA RAY (GAPI)	150
-100	SP (mV)	100
-250	Rxo/Rt	50

0.2	SHALLOW GUARD (Ohm-m)	2000
0.2	MEDIUM INDUCTION (Ohm-m)	2000
0.2	DEEP INDUCTION (Ohm-m)	2000

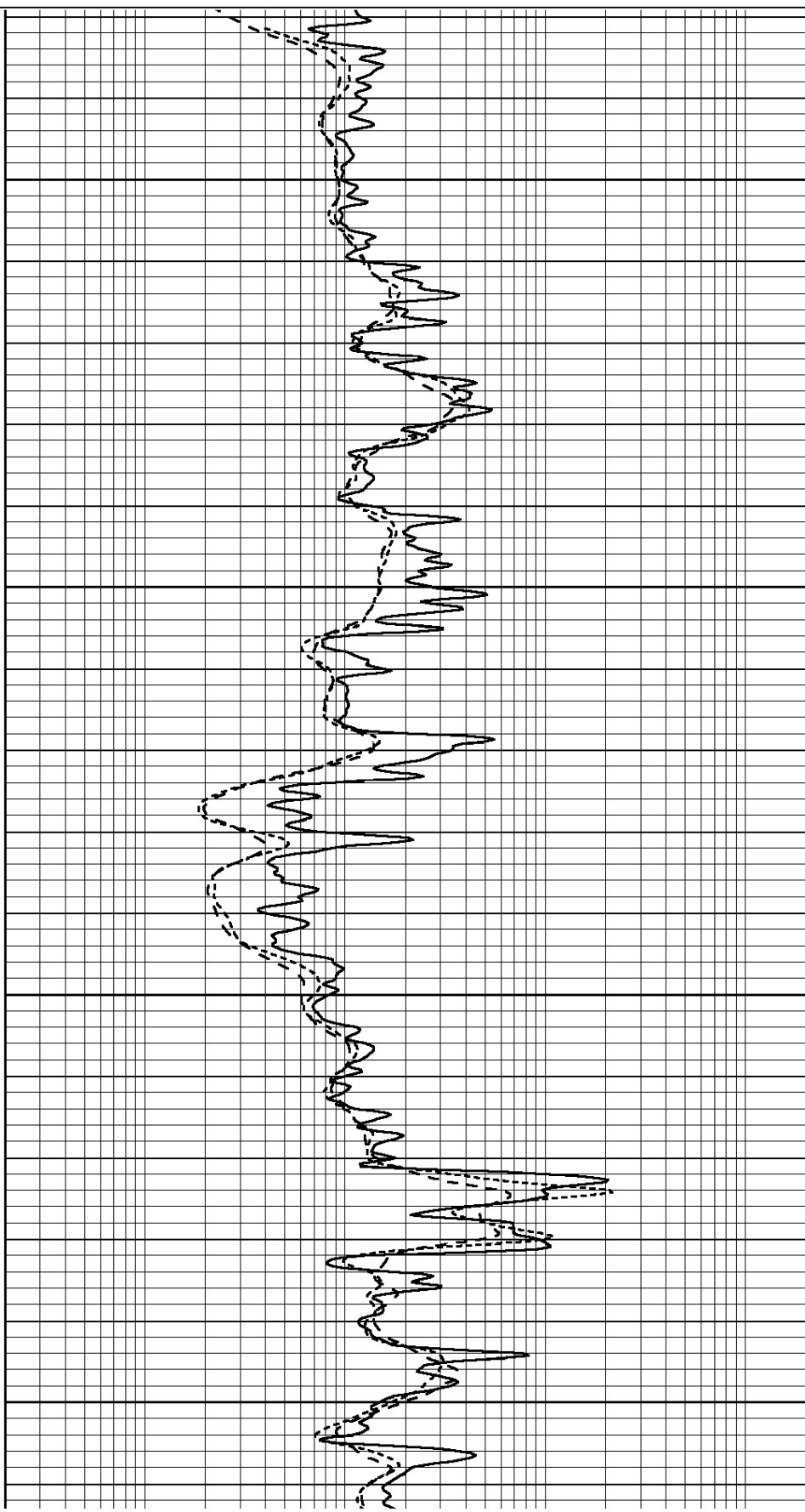


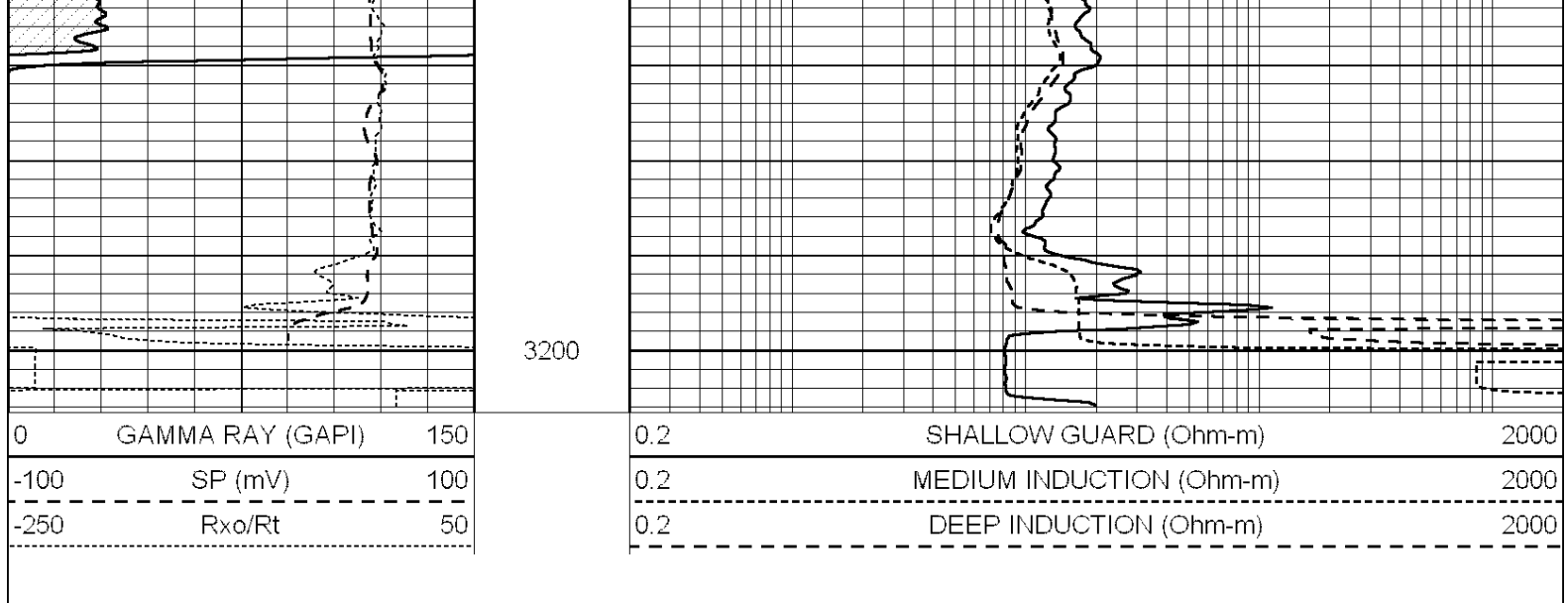
3000

3050

3100

3150





### Calibration Report

Database File: 008676ddn.db  
 Dataset Pathname: pass3.3  
 Dataset Creation: Wed Jan 18 14:12:03 2012 by Calc Open-Cased 090629

### Dual Induction Calibration Report

Serial-Model: PROBE8-DILG  
 Surface Cal Performed: Fri Aug 01 06:33:19 2008  
 Downhole Cal Performed: Mon Jul 28 11:08:27 2008  
 After Survey Verification Performed: Mon Jul 28 11:08:27 2008

#### Surface Calibration

Loop:	Readings			References			Results	
	Air	Loop		Air	Loop		m	b
Deep	0.015	0.648	V	0.000	400.000	mmho/m	632.616	-9.730
Medium	0.029	0.796	V	0.000	464.000	mmho/m	605.049	-17.680
Internal:	Zero	Cal		Zero	Cal		m	b
Deep	0.017	0.657	V	0.000	400.000	mmho/m	625.153	-10.619
Medium	0.016	0.757	V	0.000	464.000	mmho/m	625.992	-9.739

#### Downhole Calibration

	Readings			References			Results	
	Zero	Cal		Zero	Cal		m'	b'
Deep	0.000	0.000	mmho/m	2.011	405.777	mmho/m	1.000	0.000
Medium	0.000	0.000	mmho/m	7.590	503.393	mmho/m	1.000	0.000
LL3		7.500	V		1500.000	Ohm-m		
		0.000	V		20.000	Ohm-m		
		-7.200	V		3800.000	mmho-m		

#### After Survey Verification

	Readings			Targets			Results	
	Zero	Cal		Zero	Cal		m'	b'
Deep	0.000	0.000	mmho/m	0.000	0.000	mmho/m	0.000	0.000
Medium	0.000	0.000	mmho/m	0.000	0.000	mmho/m	0.000	0.000
LL3		1.000	Ohm-m		1.000	Ohm-m		
		0.000	Ohm-m		0.000	Ohm-m		
		1.000	mmho-m		1.000	mmho-m		

Litho Density Calibration

	Background	Magnesium	Aluminum	Sandstone	
Window 1	1056.3	9118.0	2809.7	10378.4	cps
Window 2	969.9	7671.9	2431.6	8565.8	cps
Window 3	683.8	2939.8	1161.0	3161.8	cps
Window 4	231.4	231.6	226.7	230.8	cps
Long Space	0.0	6702.0	1461.7	7595.9	cps
Short Space	1.2	1433.6	959.4	1568.6	cps
Rho		1.7100	2.5900	1.3800	g/cc
Pe			2.5700	1.5500	
Rib Angle	: 45.2	Rib Slope	: 1.008	Density/Spine Ratio	: 0.559
Spine Angle	: 75.2	Spine Slope	: 3.791	Spine Intercept	: -18.7

Caliper

	Readings	Reference	
Low Ref	3.7	8.0	
High Ref	6.1	14.0	
	Gain: 2.5		Offset: -1.3

Compensated Neutron Calibration Report

Serial Number:        6I  
 Tool Model:            G

CALIBRATION

Detector	Readings	Target	Normalization
Short Space	1.00    cps	1.00    cps	1.0000
Long Space	1.00    cps	1.00    cps	1.0000

Gamma Ray Calibration Report

Serial Number:	#8
Tool Model:	OPEN
Performed:	Mon Jun 13 16:56:43 2011
Calibrator Value:	150.0        GAPI
Background Reading:	0.0            cps
Calibrator Reading:	175.0        cps
Sensitivity:	0.8371        GAPI/cps